

GROWING HER NIPPLES
INTO A PAIR OF THICK,
TURGID TEATS, AND
ENHANCING THEIR
SENSITIVITY DRASTICALLY.





Swell!



Grow!



Bulge!



Bigger!

PUMPING UP, FILLING OUT,
AND ROUNDING HER
HUGE HOOTERS INTO A
MASSIVE SET OF
MONUMENTAL MOUNTAINS.



A close-up photograph of a person's chest, showing two large, rounded breasts. The skin is a light brown or tan color. The image is framed by a black border, suggesting it is a page from a comic book or a similar publication. In the bottom left corner, the word "Fuller!" is written in a stylized, pink, bubbly font with a black outline.

Fuller!



Wider!



Rounder!



Bustier!

EACH STROKE OF THE
DILDO SENDS EROTIC
JOLTS OF PURE
PLEASURE DOWN
DITZY'S SPINE.



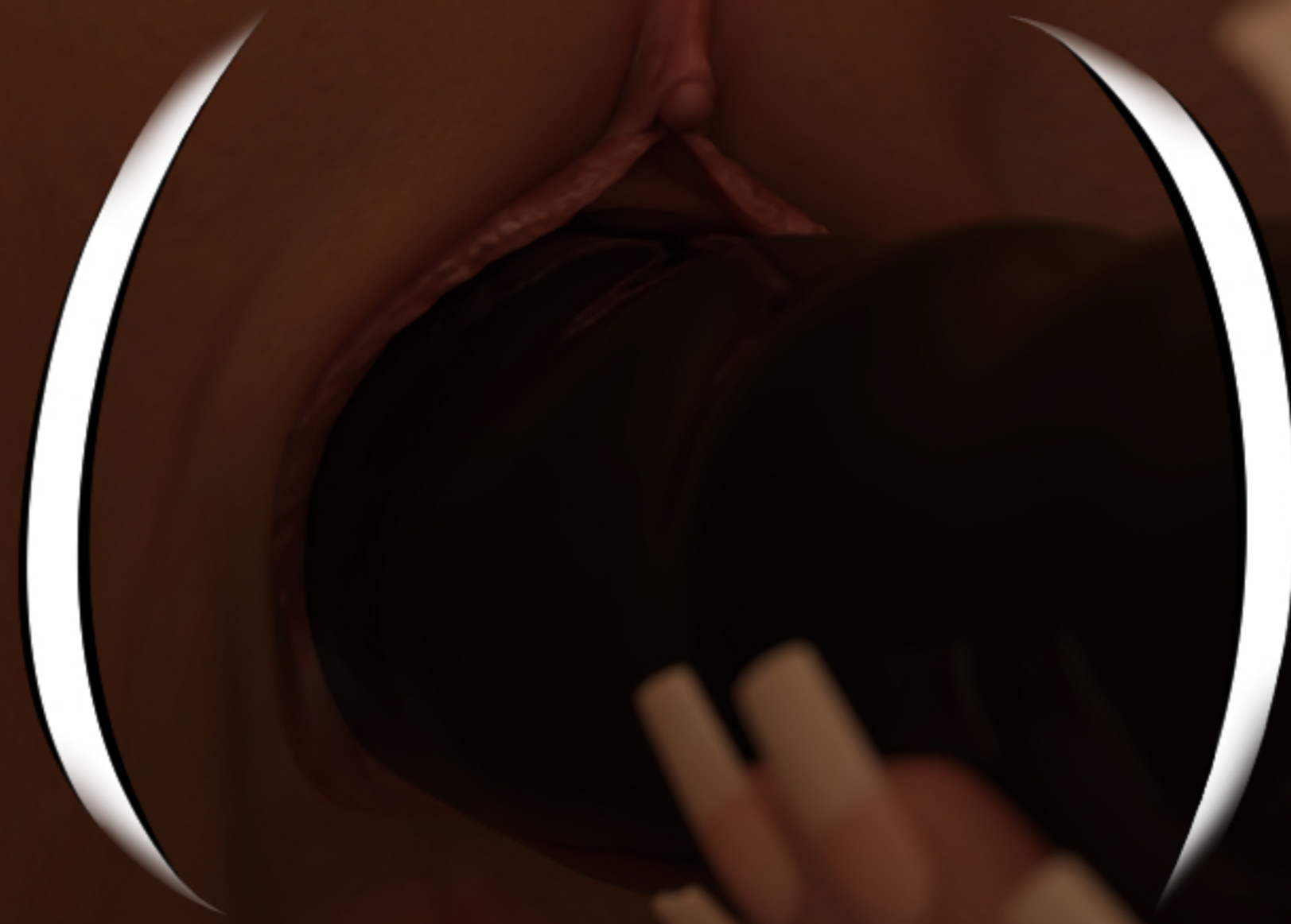
Puffier!



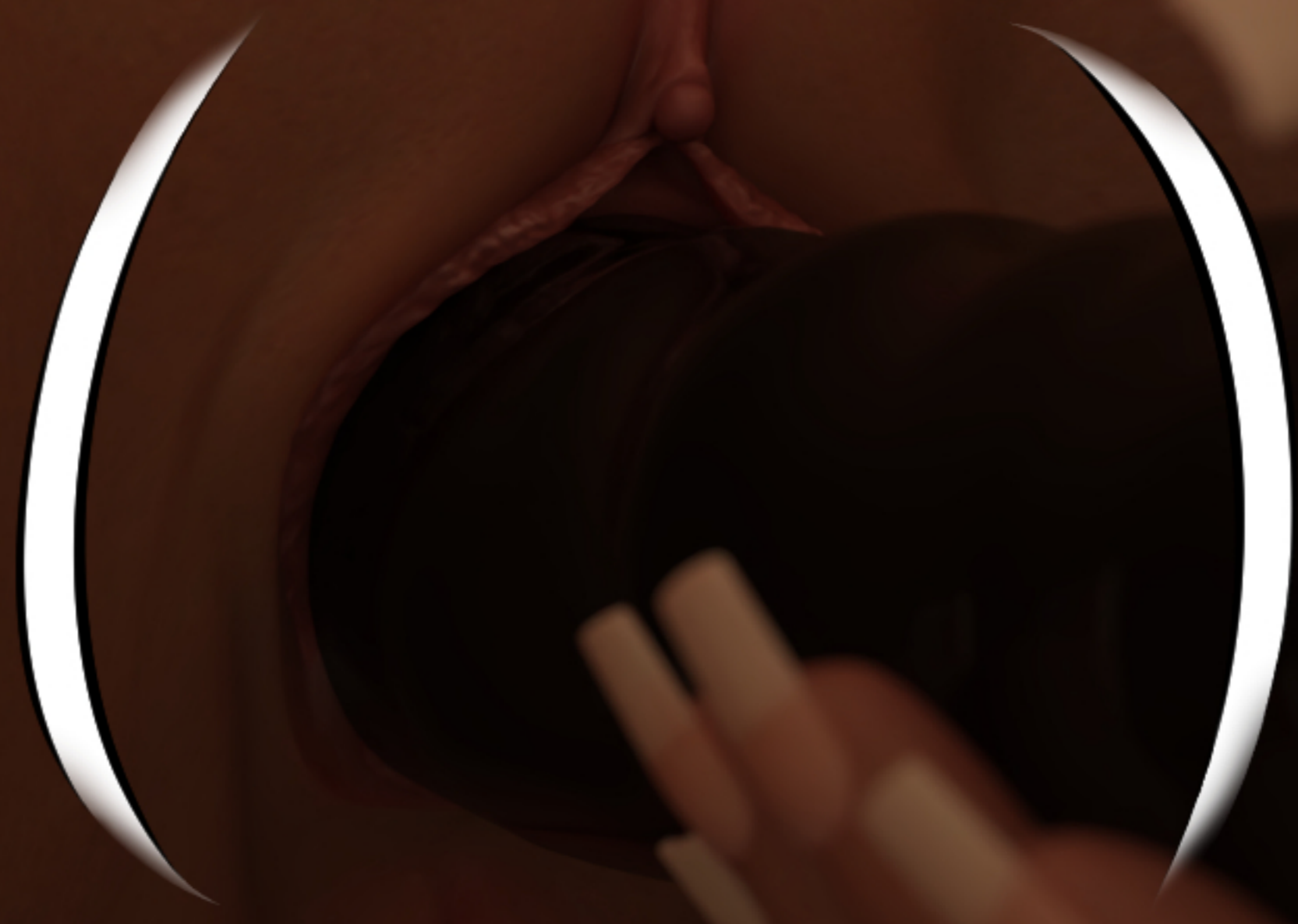
Plumper!



Plusher!



Juicier!



WHILE EACH TUG OFF OF
THE BOTTLE SENDS MORE
CHANGES RIPPLING
THROUGH HER BULGING,
CURVACEOUS BODY.



Grow!



Extend!



Lengthen!



DLING!



WHICH ONLY GROWS MORE
CURVY, MORE RIPE, AND
MORE SEXY WITH EACH
PASSING MOMENT.



A close-up, high-contrast image of two eyes. The eyes are dark, with bright white crescent-shaped highlights. The surrounding skin is a deep, rich brown. In the center, between the eyes, the word "Shrink!" is written in a bright pink, bold, sans-serif font with a black outline.

Shrink!

THE DRINK AND THE PLEASURE WORKING IN CONCERT TO MAKE HER HOURGLASS CURVES EVEN MORE VOLUPTUOUS.





Curvier!

A 3D rendered image of a character's buttocks, showing a smooth, brownish skin texture. The character is wearing a dark, possibly black, bikini bottom with a white crescent-shaped detail on each side. The background is a light-colored wall with a row of dark, oval-shaped decorative elements. The text "Shapelier!" is written in a bright pink, stylized font with a black outline, positioned on the right side of the image.

Shapelier!

BUT IT DOES MORE THAN
JUST MAKE HER EVEN
SEXIER, IT ALSO MAKES
HER PRETTIER.





Grow!



Tumble!



Lengthen!



DLING!



Longer!

MORE ATTRACTIVE AND
BEAUTIFUL, BUT ALSO
QUITE A BIT SLUTTIER.



A close-up photograph of a hand holding a metal tool, possibly a screwdriver. The hand is positioned on the right side of the frame, with fingers gripping the handle. The tool's shaft extends towards the left. The background is a plain, light-colored surface. A pink speech bubble with a black outline is centered in the image, containing the text "Swell!".

Swell!

A close-up photograph of a hand holding a metal tool, possibly a plunger. The hand is positioned on the right side of the frame, with fingers gripping the tool. The tool is a long, cylindrical metal rod with a wider, flared end. The background is a plain, light-colored surface. The word "Plumper!" is written in a stylized, pink, outlined font in the center of the image.

Plumper!

A close-up photograph of a hand holding a metal tool, possibly a plusher or a similar device. The hand is positioned on the right side of the frame, with fingers gripping the tool. The tool is a long, cylindrical metal rod with a textured grip. The background is a plain, light-colored surface. The word "Plusher!" is written in a stylized, pink, outlined font in the center of the image. Two white curved lines are drawn around the hand, suggesting motion or a specific action.

Plusher!

A close-up photograph of a hand holding a small, dark object. The hand is positioned on the right side of the frame, with fingers curled around the object. Two white, curved motion lines are drawn around the object, suggesting movement or vibration. The background is a soft, out-of-focus light brown color. On the left side, a portion of a metallic object, possibly a tool or part of a machine, is visible but blurred. The text 'Juicier!' is written in a stylized, pink font with a black outline, centered in the middle of the image.

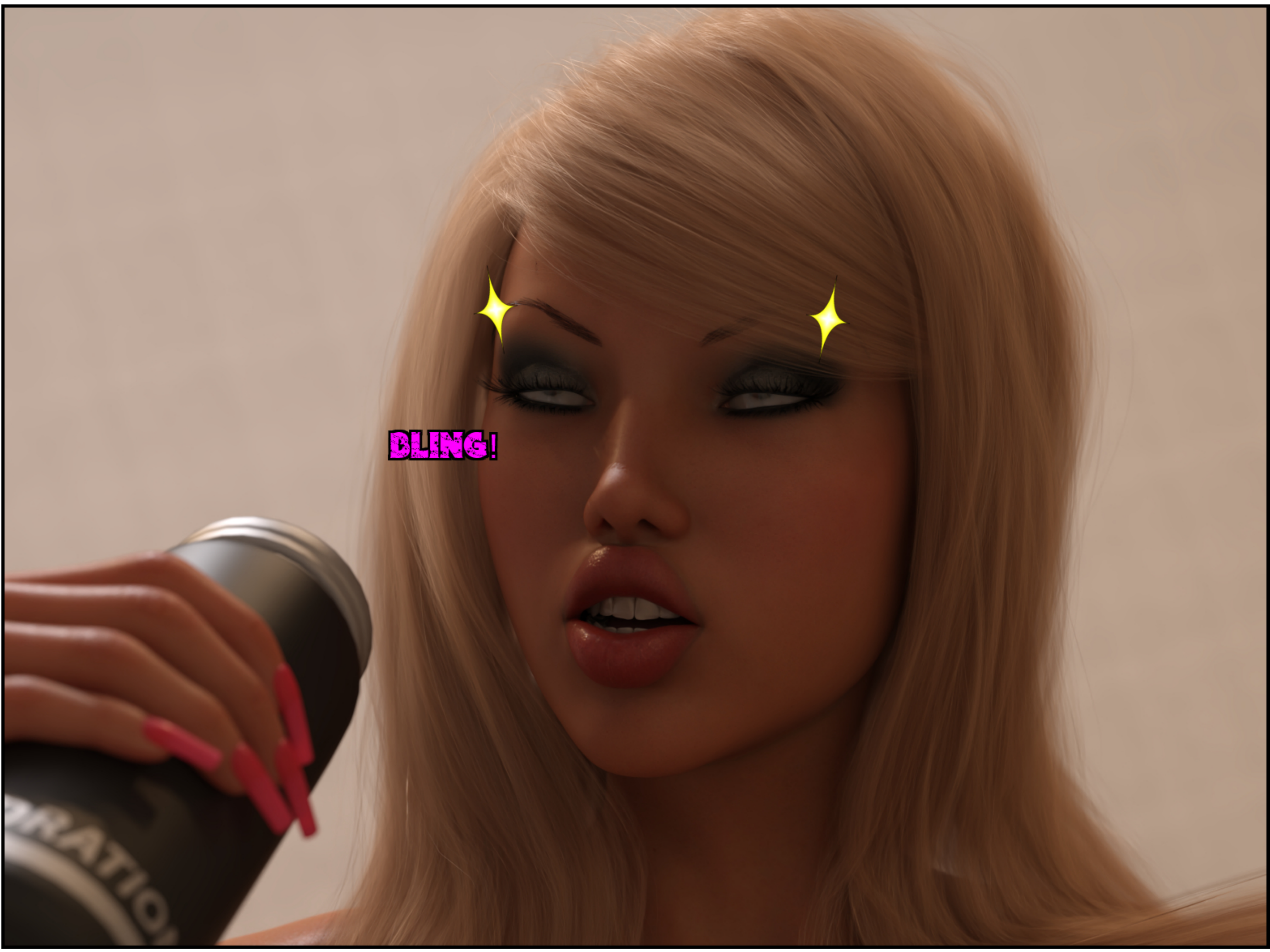
Juicier!

IT ADDS BACK MAKEUP
TO COMPLIMENT HER MUCH
LARGER BUST, FATTER
ASS, AND OBSCENE
FUCK-DOLL FIGURE.

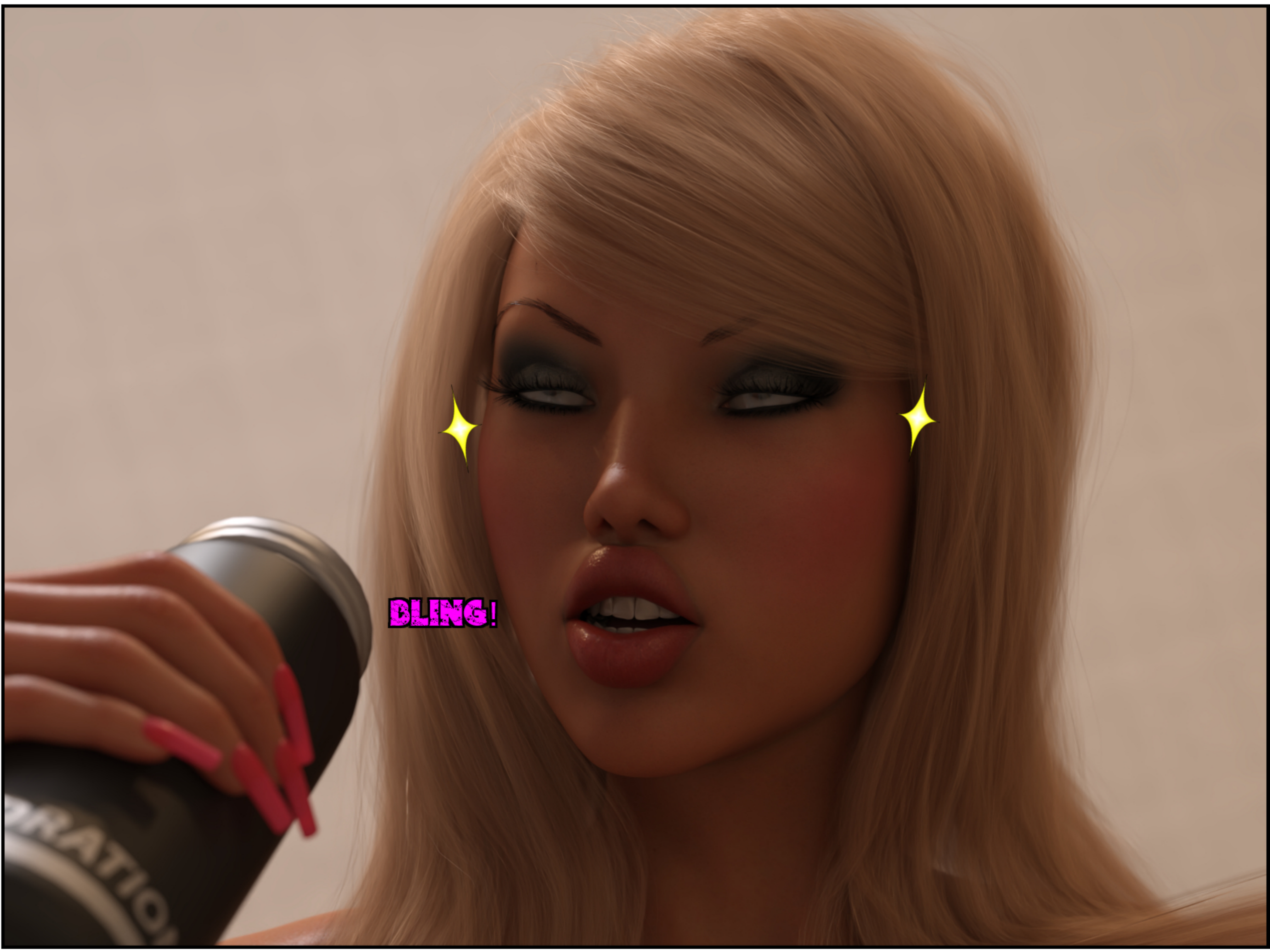


МмммФффАяяяН!

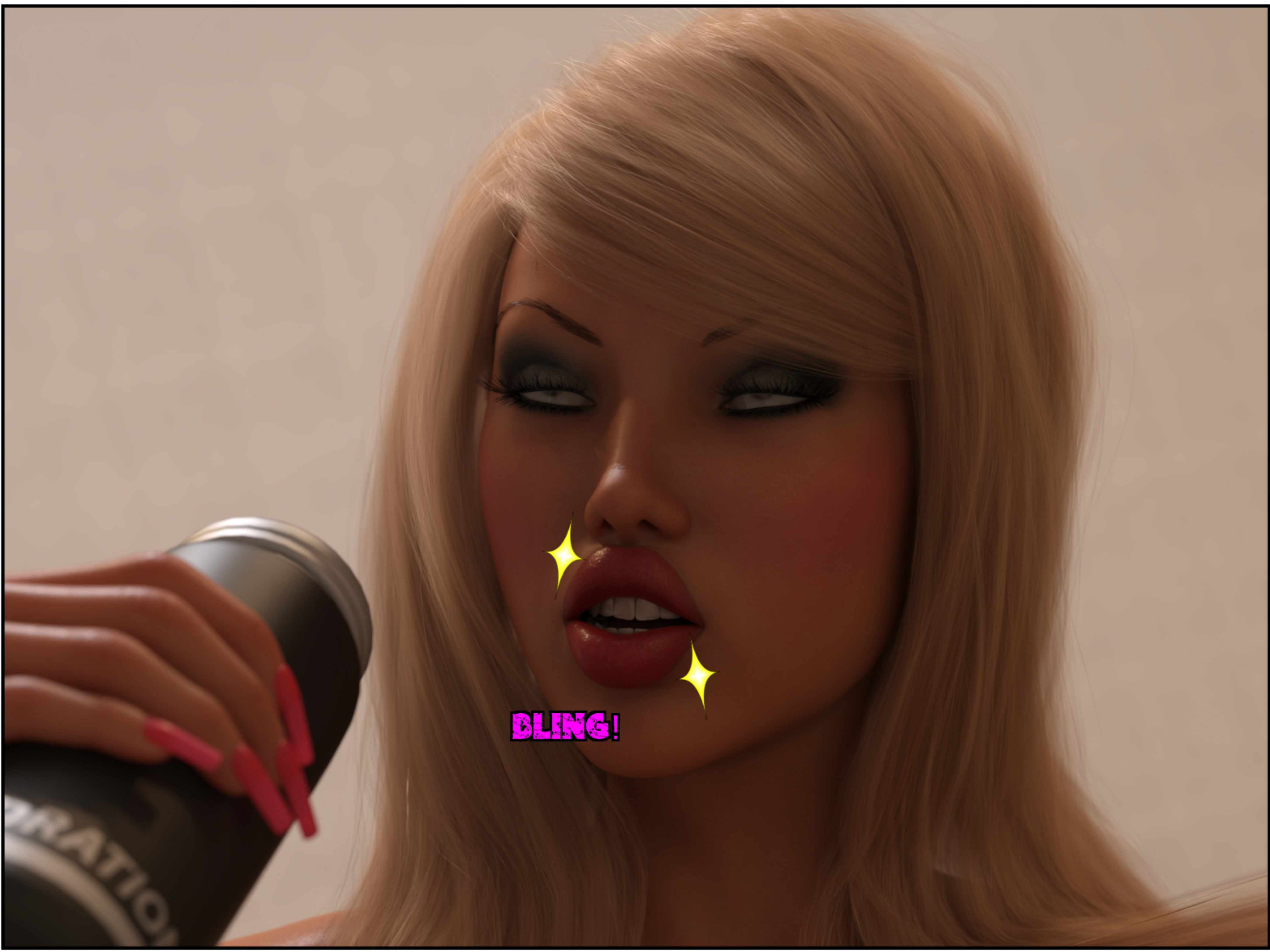
TRATION



BLING!



BLING!



BLING!



TANNED!

TAKING HER FROM SIMPLY
HOT TO TRULY BEING A
BUSTY BIMBO, MEGA-BABE
WITH A SEX DOLL BODY.



A close-up, profile view of a woman's face, focusing on her eyes and nose. She has long, dark, thick eyelashes and is looking downwards. Her lips are slightly parted, showing a red tongue. The lighting is soft and warm, highlighting the texture of her skin and the intensity of her eyelashes. The word "Thicker!" is written in a bright pink, bold, sans-serif font across the middle of her face, positioned between her eyes.

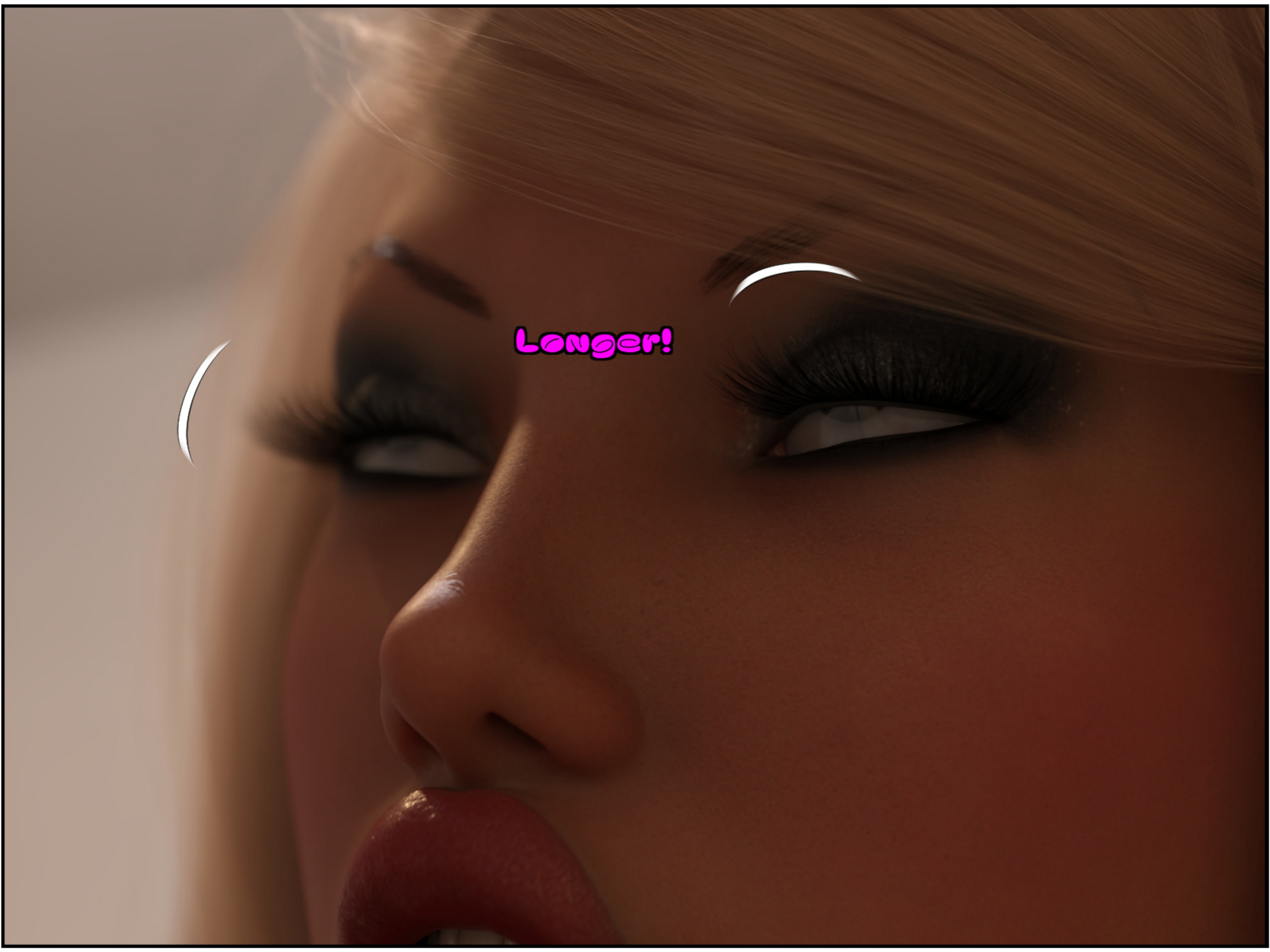
Thicker!

A close-up, profile view of a woman's face. Her eyes are closed, and her red tongue is sticking out. The lighting is soft and warm, highlighting the texture of her skin and the details of her eyelashes. The word "Extend!" is written in a bright pink, stylized font across the middle of her face.

Extend!

A close-up, profile view of a woman's face, focusing on her eyes and nose. She has long, dark eyelashes and is looking downwards. The word "Elongate!" is written in a bright pink, stylized font across the bridge of her nose. Three white, curved arrows are positioned around the eyes, pointing towards the center of the face, indicating the direction of the elongation effect.

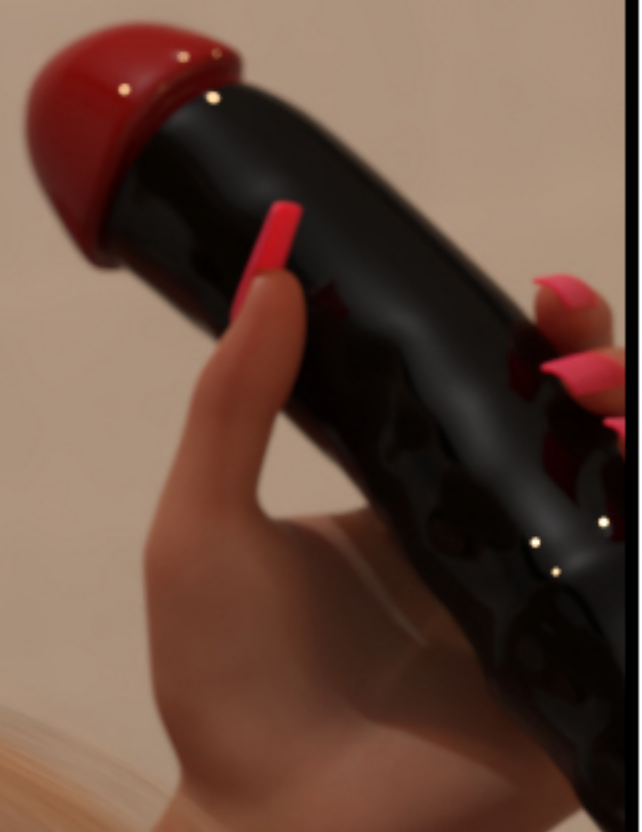
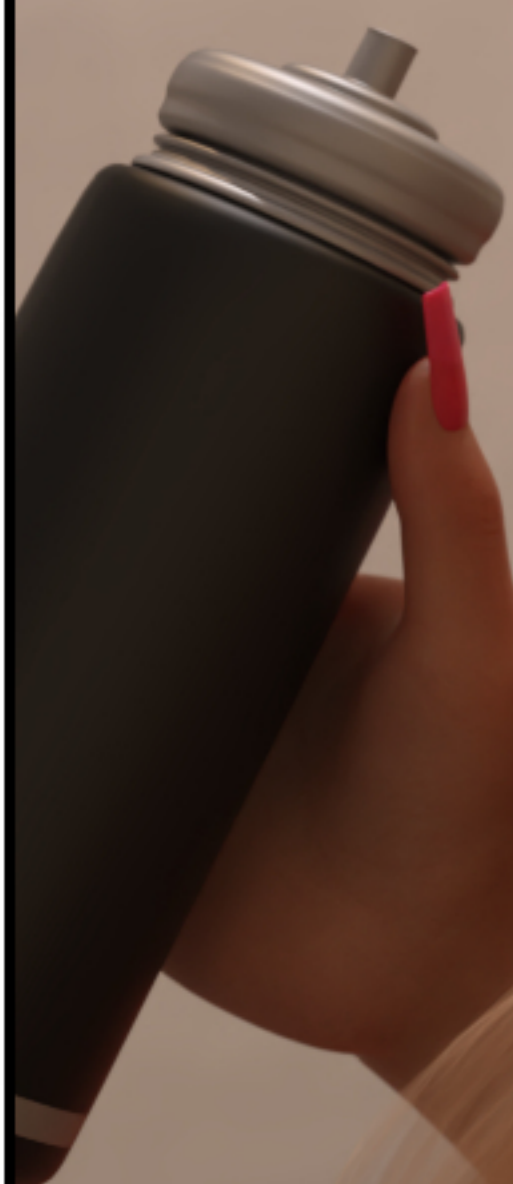
Elongate!



Longer!

WHICH CULMINATES IN
DITZY EXPLODING IN AN
EVEN MORE POWERFUL
ORGASM!

YyyYeEeSsssSSS!



HER NEW AND IMPROVED
PUSSY FOUNTAINS OUT
HER EXTREME ENJOYMENT
LIKE A FIRE HOSE.

Gush!



AND HER SCREAMS OF PLEASURE ECHO THROUGH THE EMPTY LAUNDROMAT.

OH GAWD
YYYEEESSS!

Gush!



FUCK YEAH!
YEAH, YEAH
YYYEEEEAAAHHH!

THOUGH IT MIGHT NOT BE
AS EMPTY AS WE HAD
THOUGHT IT WAS.

WELL,
IT LOOKS
LIKE YOU CAN CATCH
MORE THAN BEES
WITH HONEY.

Gush!

A woman with long blonde hair, seen from behind, is kneeling on a wooden floor in a gym. She is wearing a black sports bra and black shorts. She is holding a black and white water bottle with both hands. In the background, a man with short dark hair, wearing a black tank top and black shorts, is standing in an open office doorway. He has his hand to his chin in a thoughtful or listening pose. The gym has a white wall with several circular vents or lights. The office doorway is on the right side of the frame.

SEEMS
YOU CAN
CATCH A BIG TITTY
BIMBO WITH IT
TOO!

AS A VOICE CALMLY
COMMENTS FROM THE
OPEN OFFICE DOOR.

THE END
OF PART 2!

<https://patreon.com/mrphoenyx>
<https://mrphoenyx.deviantart.com>

STORY AND
ART BY
MR PHOENYXX