

GIVE IT A PARTNER,
SEE WHAT IT DOES.









A close-up, low-angle shot of a character's face, looking upwards. The character has dark skin and is wearing a dark, possibly black, hooded garment. The background is a tiled ceiling with a glowing yellow neon sign that partially reads "STAR". The lighting is dramatic, with strong highlights and deep shadows.

**WAIT, WHERE DID
THE SECOND ONE
COME FROM?**

WHY IS THIS
ESCALATING?



IT CAN'T HANDLE TWO.
STOP ADDING COCKS.





A THIRD ONE?
ARE YOU SERIOUS?

A close-up, cinematic shot of a woman's face, focusing on her eyes and hair. She has light brown hair and is looking downwards. A white speech bubble with a black border is positioned in the upper right quadrant of the frame. The background is dark and out of focus.

**ABORT SEQUENCE.
MAKE IT LEARN ABOUT
ITS BODY.**



GASP



THERE'S THOSE
WEIRD THOUGHTS
AGAIN.



WHY DO I
FANTASIZE ABOUT
BEING DESIRED SO
MUCH?



I DO
HAVE A NICE
BODY...



IS THAT WHY
FOLKS WANT TO BE
WITH ME?

TO PLAY
WITH MY BIG
TITS?

GROW

EXPAND

SPANKING
MY SEXY BUBBLE
BUTT?

ENLARGE

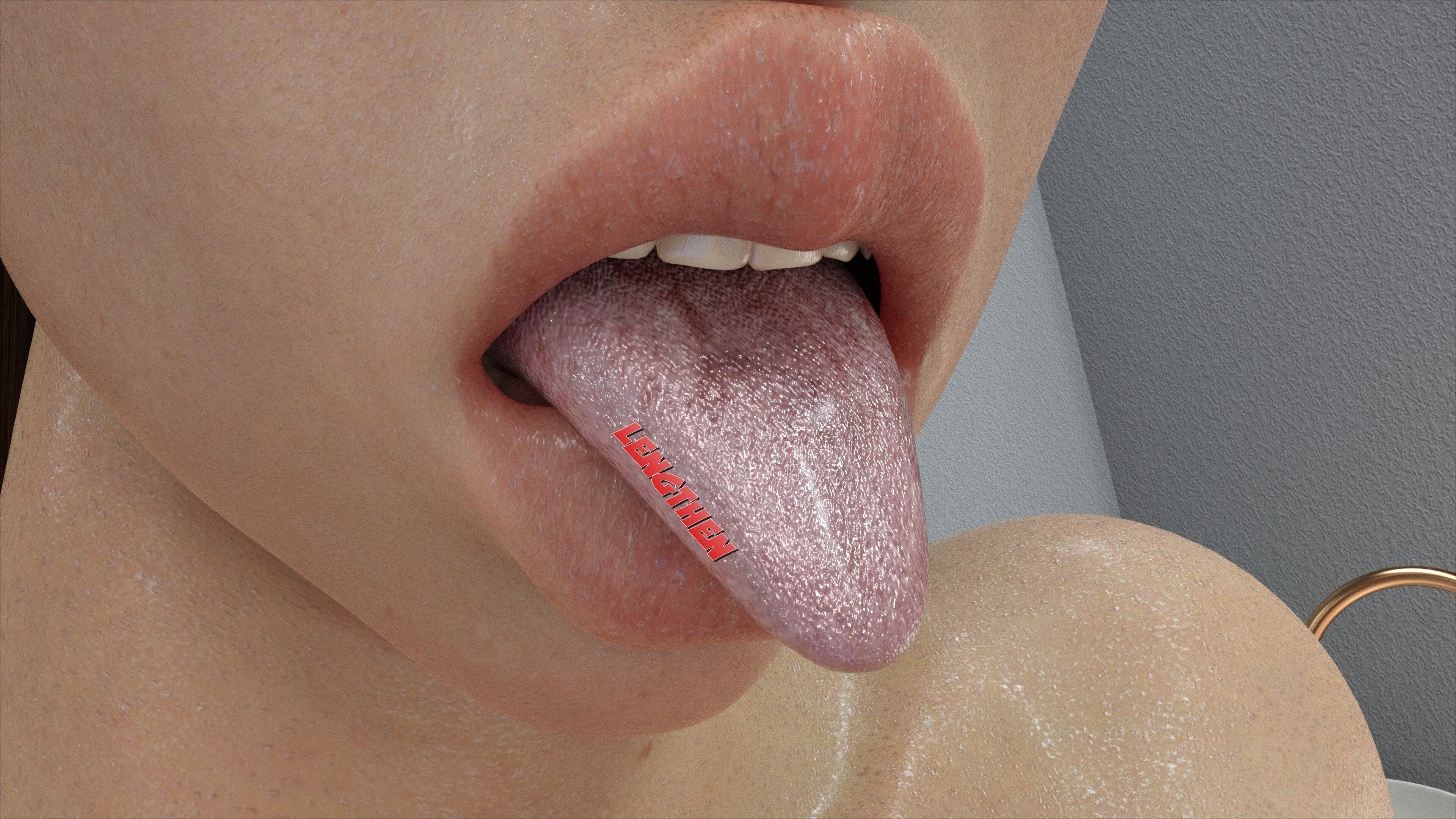


AM I JUST
A TOY?

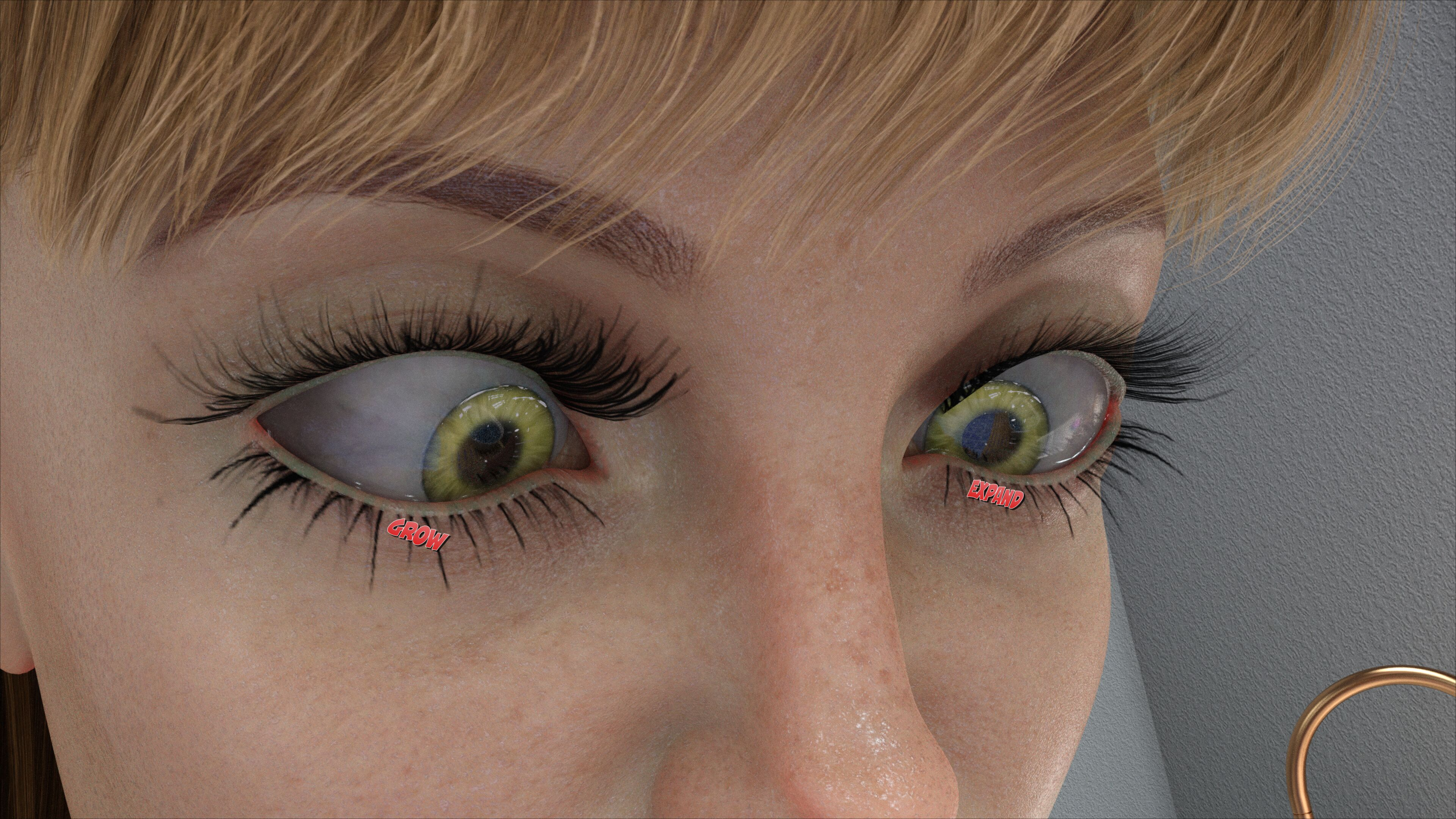


OH NO!

BLOAT



LENGTHEN



GROW

EXPAND



IT'S GOING OFF THE RAILS AGAIN.

MAKING ITSELF RIDICULOUS.

A woman with long brown hair and large breasts is shown from the chest up. Her skin is covered in glowing green circuit-like patterns. She has a shocked expression with her mouth wide open. The background is a grey wall and a blue patterned fabric.

PULL IT OUT.

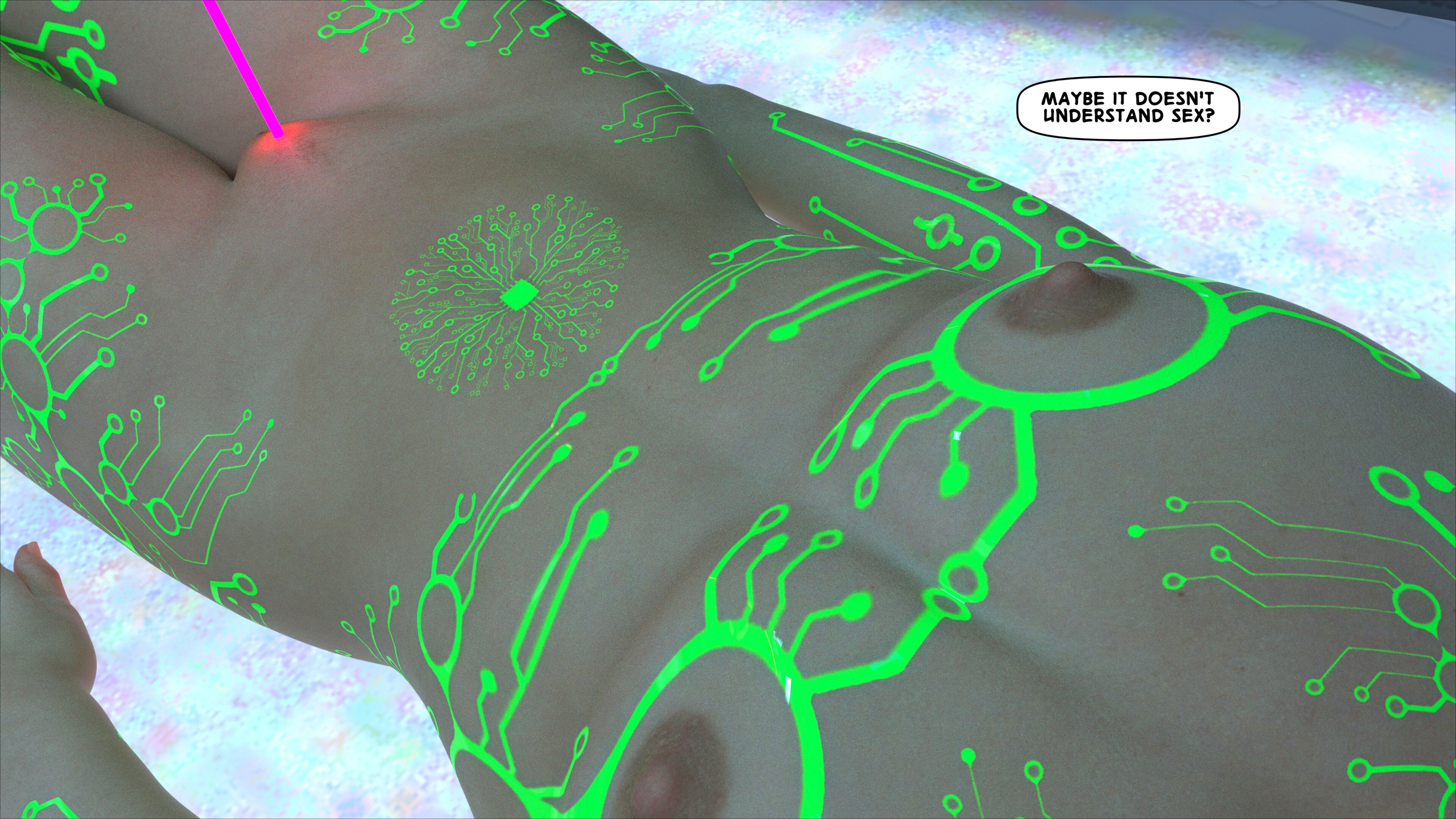
**IT CAN'T LEARN
ABOUT A SEXY BODY
THIS WAY.**

WHY IS NOTHING
WORKING WITH IT?



WHY DOES IT KEEP
ESCALATING THE
TRAINING PROGRAMS?





MAYBE IT DOESN'T UNDERSTAND SEX?

ACTIVATE
PENIS
PROGRAM.





MMHHHH...
MHHHMMMM...
HMMMMMMMM...



IT'S NO USE.
IT'S ENLARGING ITSELF
AGAIN, ESCALATING
THE SEQUENCE.

LOCK IT UP.
WE'LL CALL IT A DAY
AND TRY AGAIN
TOMORROW.



LATER.



WHAT IS THIS?

WHERE AM I?

to be continued