

# BEHIND THE SCENES

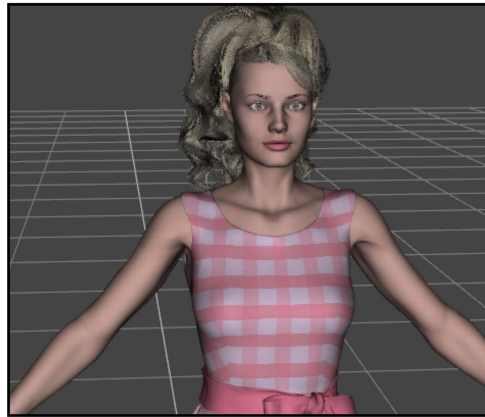
## THE MAKING OF BAMBI



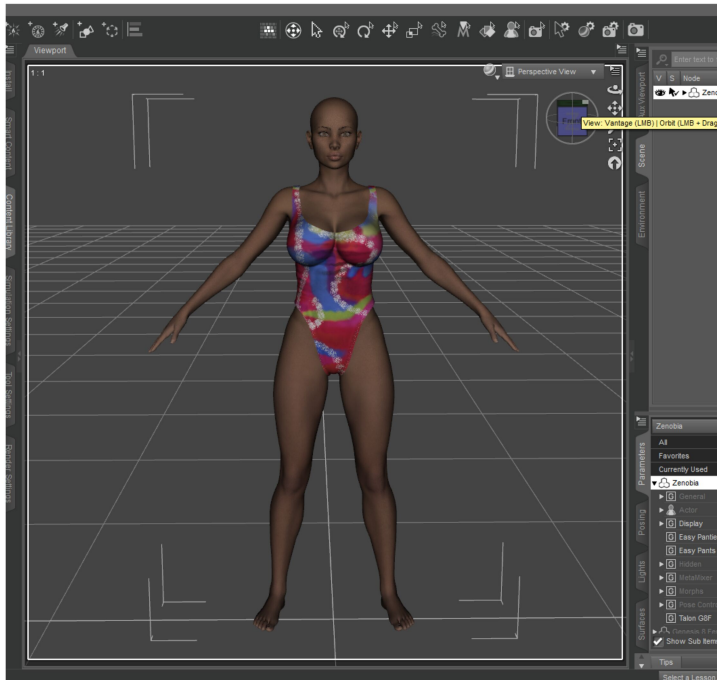
WHEN I SET OUT TO DESIGN THE LOOK FOR DADDY DOLL, I WANTED FOR THE MAIN CHARACTER IN HIS ULTIMATE DOLL FORM TO SOMEWHAT RESEMBLE A CERTAIN FAMOUS DOLL.

ALTHOUGH THERE ARE A FEW PRE-MADE DOLLS OF A CERTAIN NAME OUT THERE, AND I DID BUY ONE OF THEM WHICH WAS DESIGNED TO RESEMBLE MARGOT ROBBIE, I ULTIMATELY WASN'T QUITE SATISFIED WITH THE RESULT, SO I DECIDED TO DESIGN MY OWN USING PARTS AND PIECES OF DIFFERENT ASSETS I HAVE BOUGHT OVER THE YEARS (THANKS TO MY WONDERFUL PATRONS I HAVE RESOURCES TO INVEST IN MY DESIGNS!)

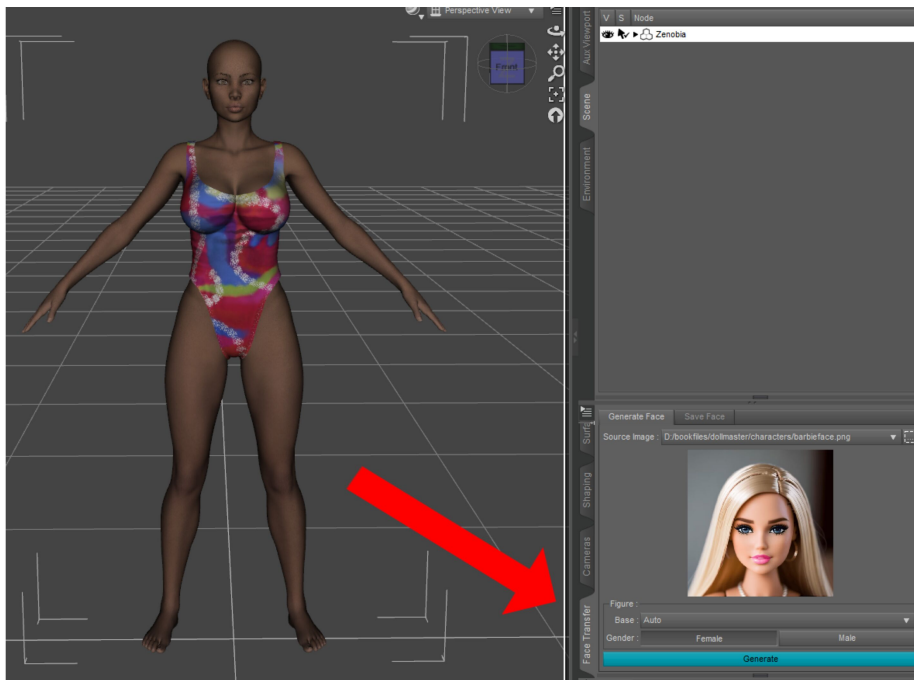
SO, I AM NOW GOING TO SHOW YOU A LITTLE LOOK BEHIND THE SCENES OF WHAT WENT INTO DESIGNING MY FRANKEN-BAMBI.



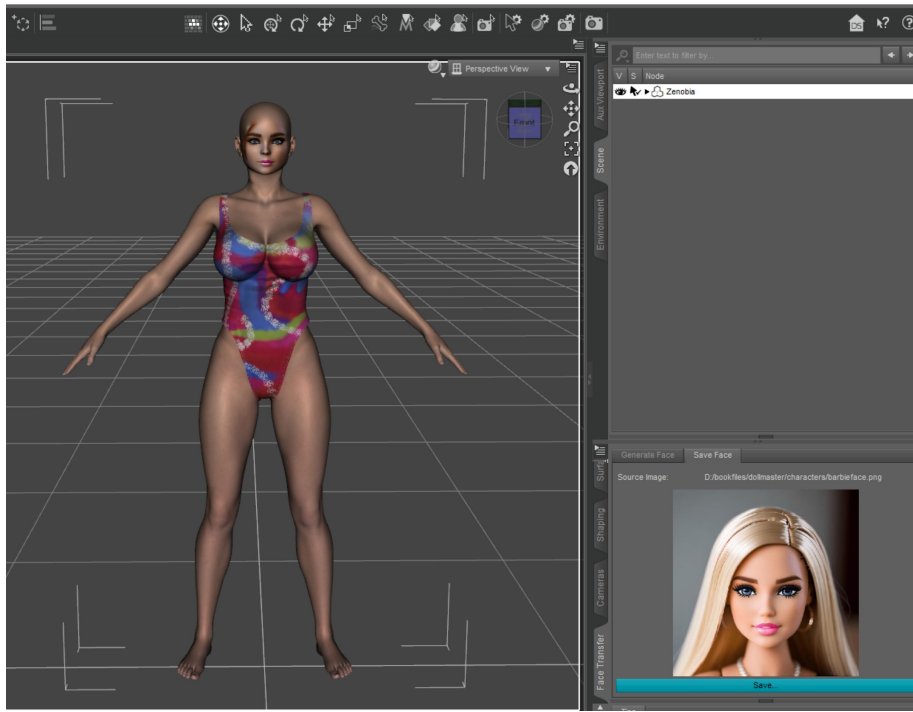
THIS IS STORE BOUGHT MARGOT ROBBIE I ULTIMATELY DIDN'T LIKE.



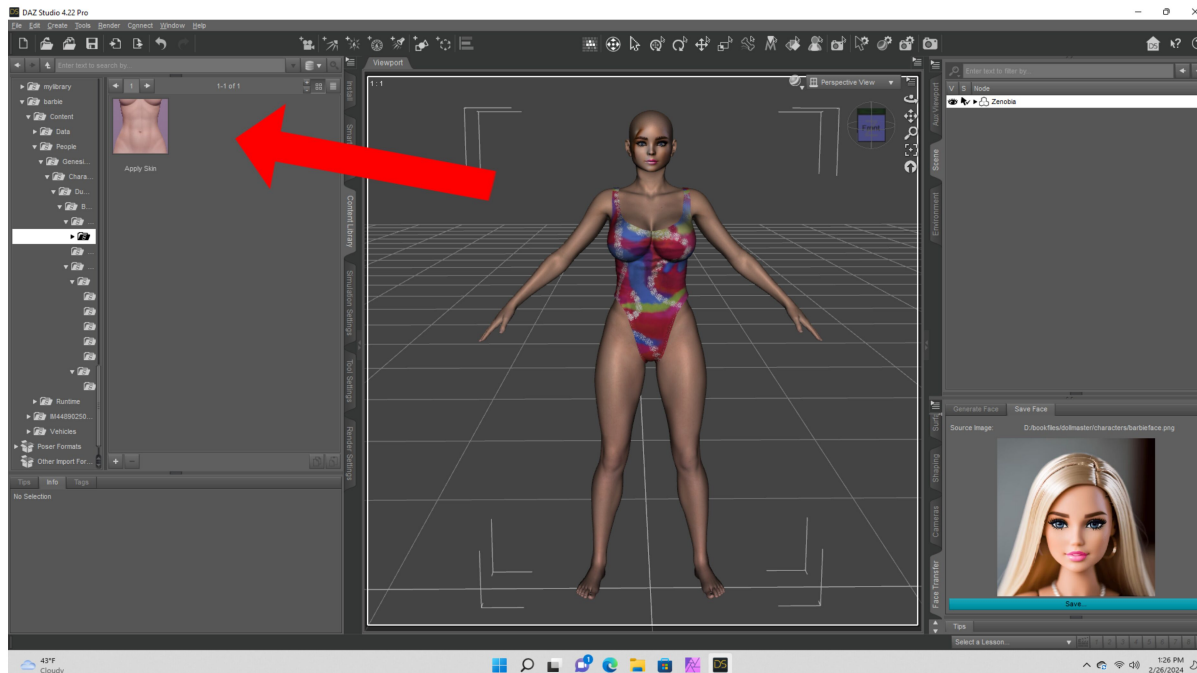
*BECAUSE BARBIE HAS A FULL FIGURE, I STARTED WITH A CHARACTER NAMED ZENOBIA WHO COMES ALREADY QUITE CURVY. SHE IS ALSO THE BASE FIGURE FOR THE SENATOR'S BODYSUIT IN MAKE HIM WEAR IT.*



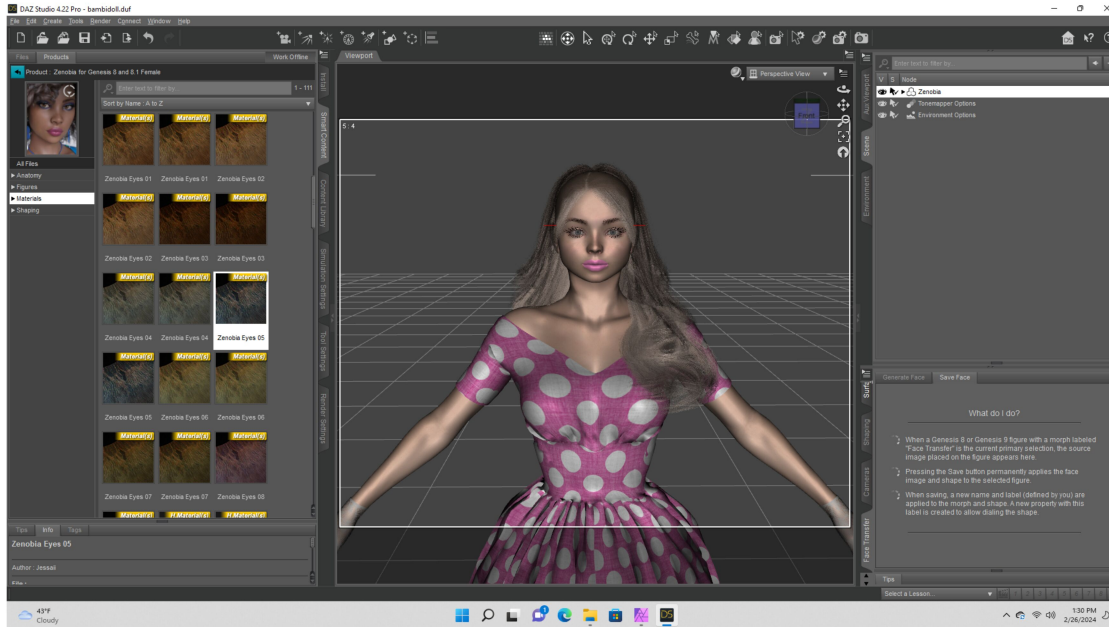
*I THEN USED AN APPLICATION I HAVE PURCHASED, (AGAIN, USING YOUR WONDERFUL DONATIONS) CALLED "FACE TRANSFER." THIS ALLOWS ME TO TRANSFER FACES FROM PICTURES TO THE BODIES OF THE CHARACTERS. I FOUND A PICTURE OF AN ACTUAL BARBIE FACE TO SEE HOW THAT WOULD WORK.*



I WAS PRETTY HAPPY WITH THE FACE, BUT AS OFTEN HAPPENS WITH FACE TRANSFER IT PICKED UP SOME OF THE DOLL'S HAIR AND BROUGHT THAT INTO THE IMAGE. IT ALSO OFTEN TURNS SHADOWS INTO UGLY RUST STAINS. HOWEVER, THERE IS A SOLUTION.



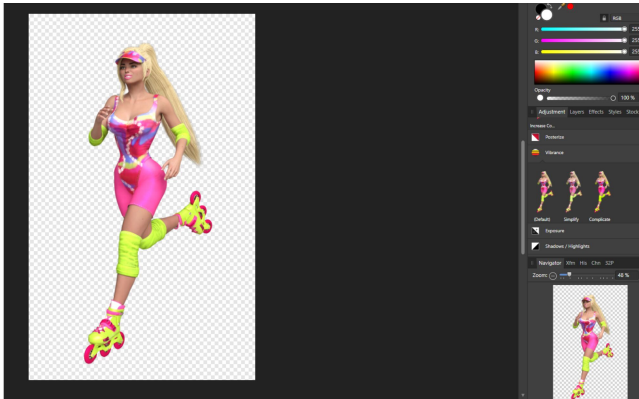
I AM ABLE TO TRANSFER SKIN FROM ONE CHARACTER TO ANOTHER, SO I DID USE THE SKIN THAT CAME WITH THE MARGOT ROBBIE.



**THEN IT'S JUST A MATTER OF  
ADDING HAIR AND MAKEUP, AND  
OUR BAMBI DOLL IS READY TO  
RENDER!**



**THERE SHE IS! OR, SHOULD I SAY HE? IN ANY CASE, THERE WAS  
ONE MORE DESIGN DECISION TO BE MADE. I WANTED THE IMAGES  
TO BE SATURATED WITH COLOR, LOOKING ALMOST LIKE A  
CARTOON. SO....**



FOR DADDY DOLL I TAKE ALL THE PICTURES OUTPUT BY DAZ AND THEN DO SOME POSTWORK USING A PROGRAM CALLED AFFINITY PHOTO, WHICH IS THE LATEST VERSION OF A PROGRAM I HAVE BEEN USING TO DOCTOR PHOTOS FOR PROBABLY 20 YEARS.

I USED THE VIBRANCE TOOL TO INCREASE THE SATURATION, WHILE ALSO INCREASING THE CONTRAST GOING FOR THAT KIND OF SO MUCH COLOR IT HURTS THE EYES LOOK.



BEFORE



AFTER

THANKS FOR READING AND SUPPORTING MY PATREON! I HOPE YOU HAVE ENJOYED THIS GLIMPSE INTO THE BUILDING OF BAMBI!