



Charm Scout Sash

A PATREON EXCLUSIVE PATTERN



You didn't think we would deny you a sash pattern, did you? Now that we've released the Scout Dress pattern on Patreon, you need to complete your Charm Scout look with a jaunty sash! This project is super simple to sew, and it provides the perfect blank canvas for your merit badges.

xoxo, *Gertie*

CHOOSING YOUR SIZE

The Charm Scout Sash has two size groupings, 2-12 and 14-20. Use your corresponding dress size from the Charm Patterns size chart. Please use the chart below to pick your size. The High Bust measurement should be taken above your breasts and the Full Bust measurement should be taken at the fullest part of your bustline. Take the waist measurement at the smallest part of your torso and the hip measurement at the widest part of your hips.

	2	4	6	8	10	12	14	16	18	20
High Bust	29 in 73.7 cm	31 in 78.7 cm	33 in 83.8 cm	35 in 88.9 cm	37 in 94 cm	39 in 99 cm	41 in 104.1 cm	43 in 109.2 cm	45 in 114.3 cm	47 in 119.4 cm
Waist	24 in 61 cm	26 in 66 cm	28 in 71.1 cm	30 in 76.2 cm	32 in 81.3 cm	34 in 86.4 cm	36 in 91.4 cm	38 in 96.5 cm	40 in 101.6 cm	42 in 106.7 cm
Hips	36 in 91.4 cm	38 in 96.5 cm	40 in 101.6 cm	42 in 106.7 cm	44 in 111.8 cm	46 in 116.8 cm	48 in 121.9 cm	50 in 127 cm	52 in 132.1 cm	54 in 137.2 cm

MATERIALS & NOTIONS

- 2 yds (1.8 m) fabric for sash (see cutting layout on page 3)
- Thread to match your fabric

FABRIC NOTES

We recommend medium-weight wovens: cotton twill, sateen, canvas, or denim.

RESOURCES

Here is the fabric that I used for the samples. There are lots of places to purchase fabric, so this is solely a guide you can use as a reference:

[Green Cotton Twill](#)

Get your patches!

[Camp Gertie Patch](#)

[Charm Scout Flower Patches](#)

PATTERN PIECES

Sash: Cut 2 fabric on fold

SEWING INSTRUCTIONS

BEFORE SEWING

Join templates: Print out the pattern pieces on pages 3-7 and join them together at the gray box join marks. Make sure your printer is set to print at 100%, "no scaling." Measure the 1-inch (in) square to ensure proper printing size.

Transferring marks: Use dressmaker's tracing paper and a tracing wheel to transfer all pattern markings to the wrong side (WS) of your fabric. Mark pattern notches by snipping into the seam allowance with the tip of your scissors.

NOTES

- 5/8-inch (in) (1.5 cm) seam allowances are included on all pattern pieces.
- Check the fit by holding the pattern up to your body; you may wish to make slight adjustments to the sash length.

SEWING THE SASH

1. Sew sash seams: pin Sash (1) pieces right sides (RS) together on both long edges. Stitch. Trim seam allowances to 1/4 in (6 mm) and turn sash RS out. Press.

2. Sew end of sash: pin short ends of sash (RS) together. Stitch. Press seam allowances open. Finish raw edges of seam allowances as desired.

Sew your merit badges to your new Charm Scout Sash and wear it with pride!



Charm Scout Sash

Sizes 2-20

5/8 inch (in)
(1.5 cm) seam allowances are included on pattern piece.

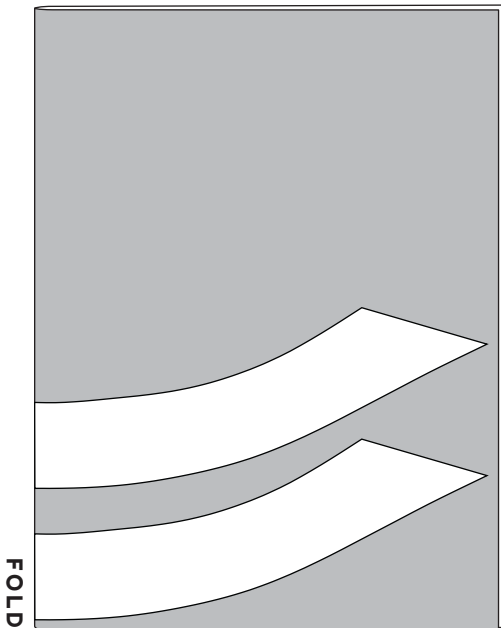
Fold back paper where indicated, match at grey squares, and tape together before cutting your fabric.

REQUIRED YARDAGE

Sash

All sizes

45 in	2 yds
60 in	1.8 m



PATTERN SIZE KEY

2-12 _____
14-20 (dotted line)

SYMBOL KEY

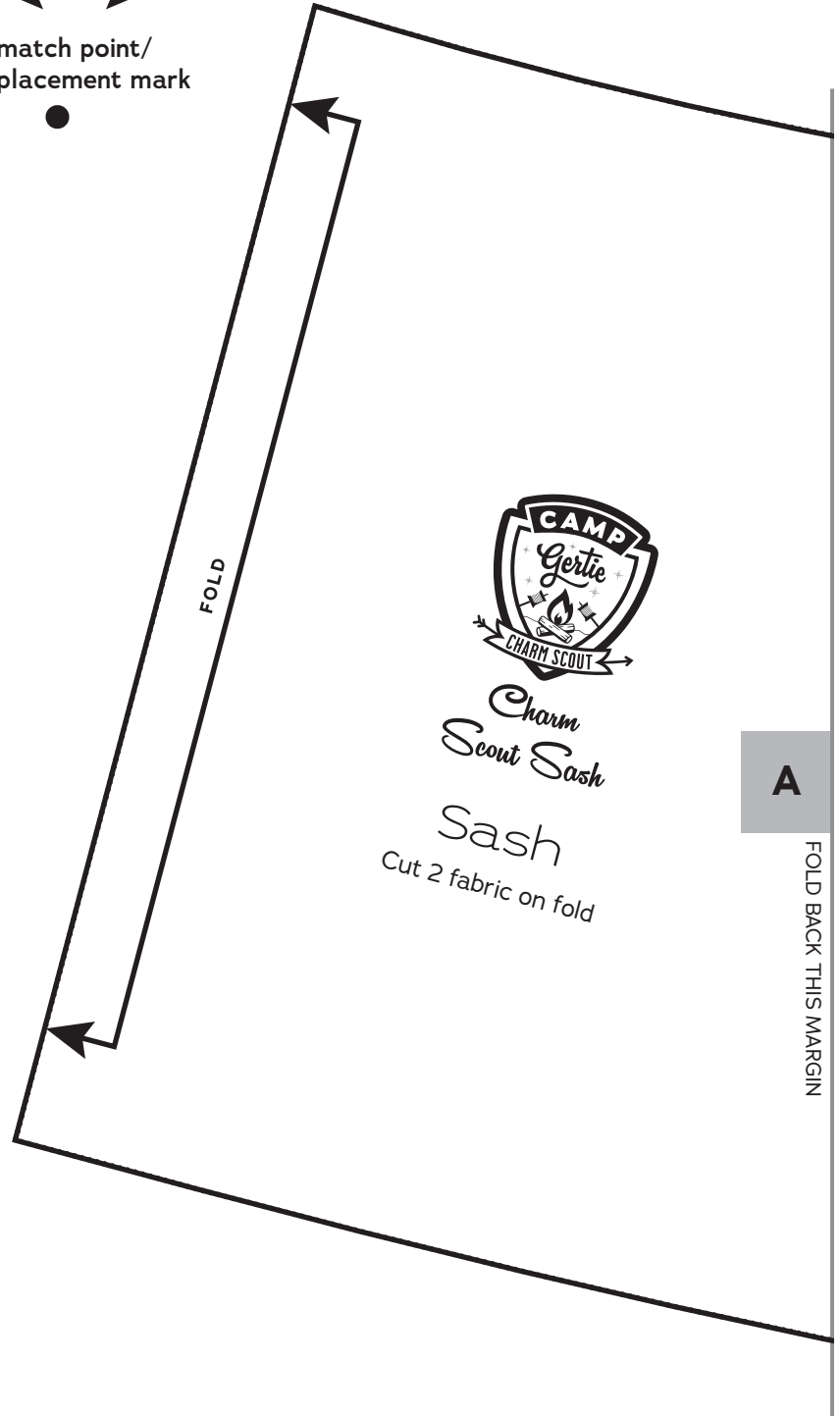
grainline arrow

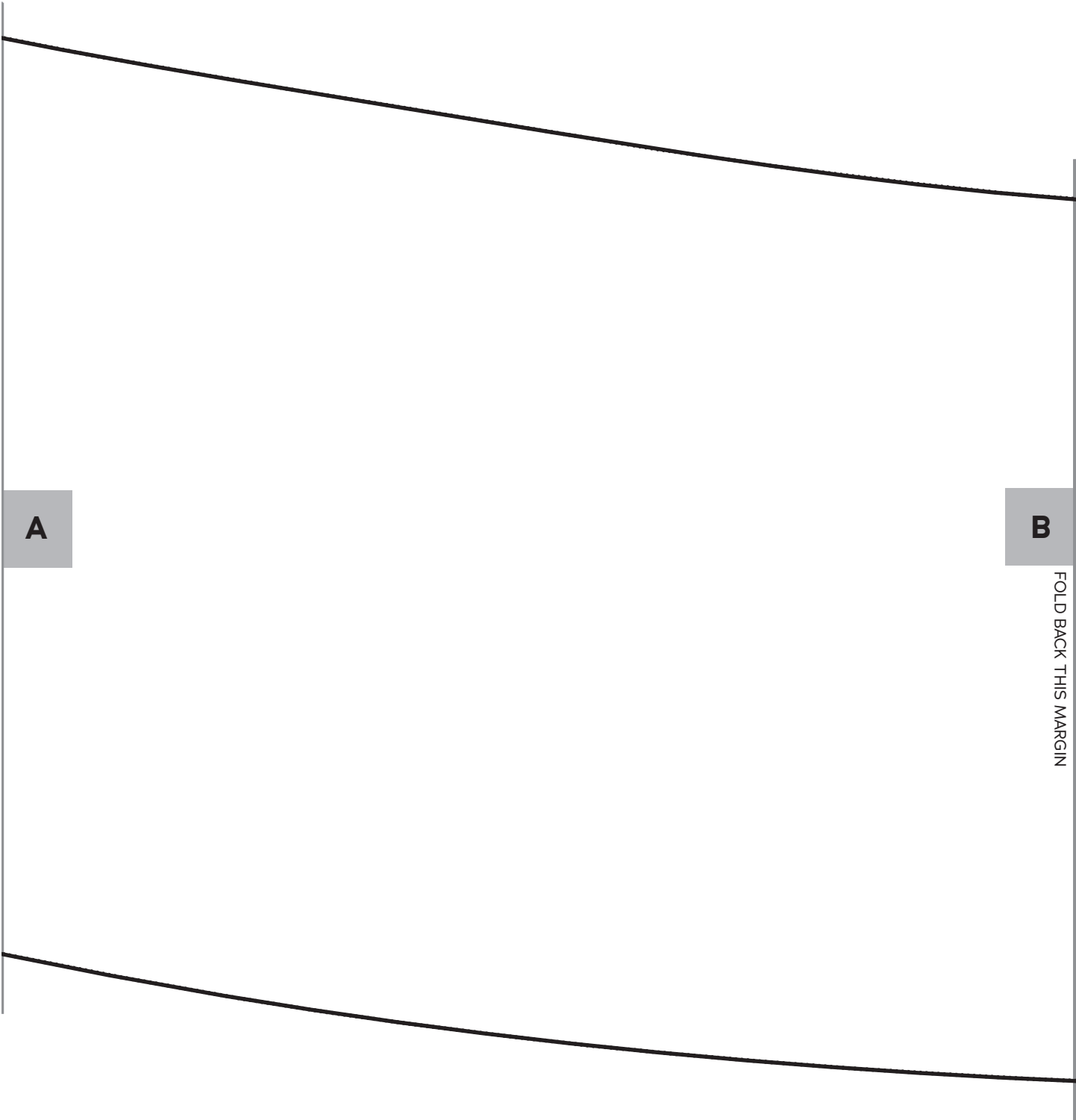


match point/
placement mark



1" test square

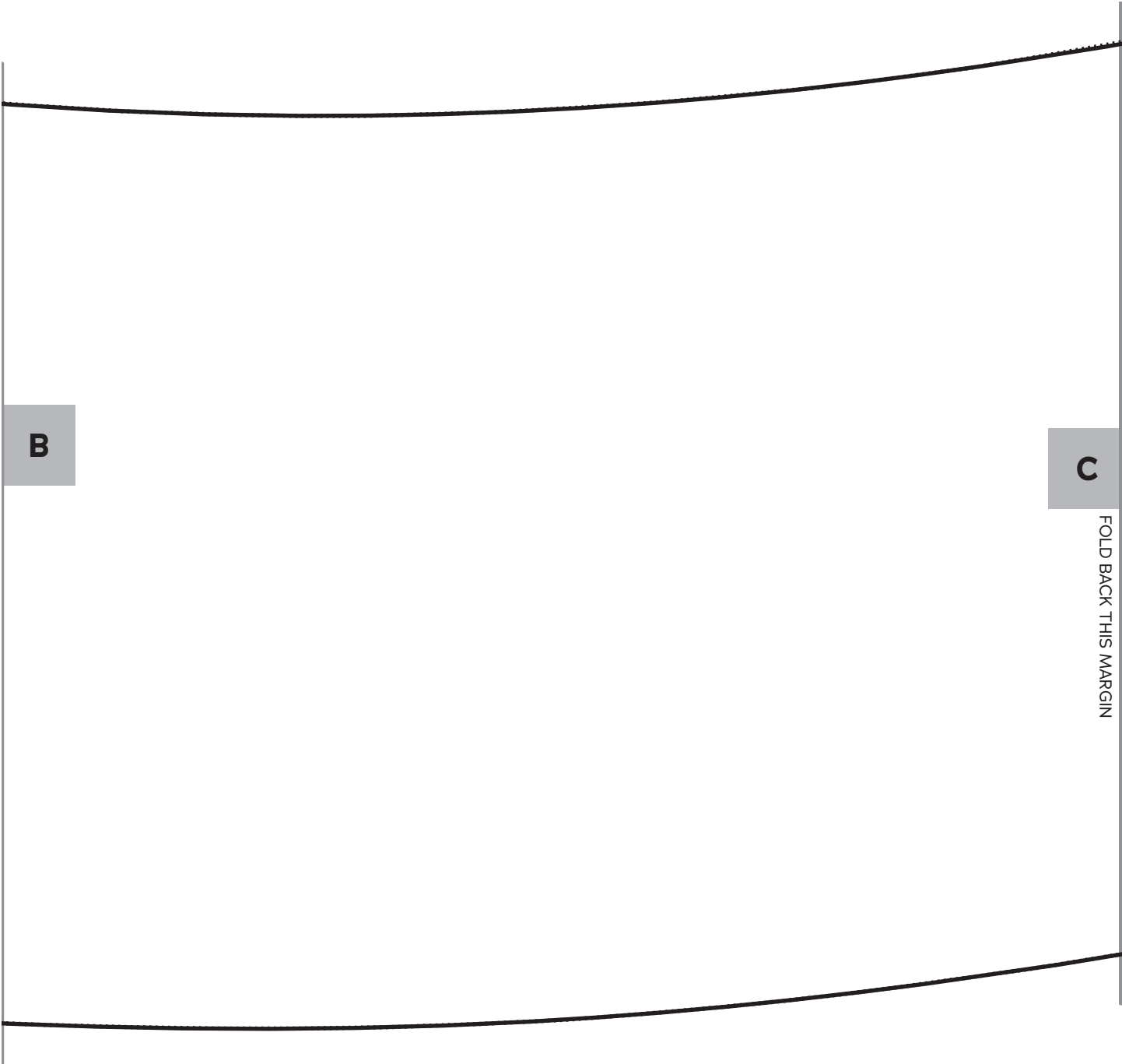




A

B

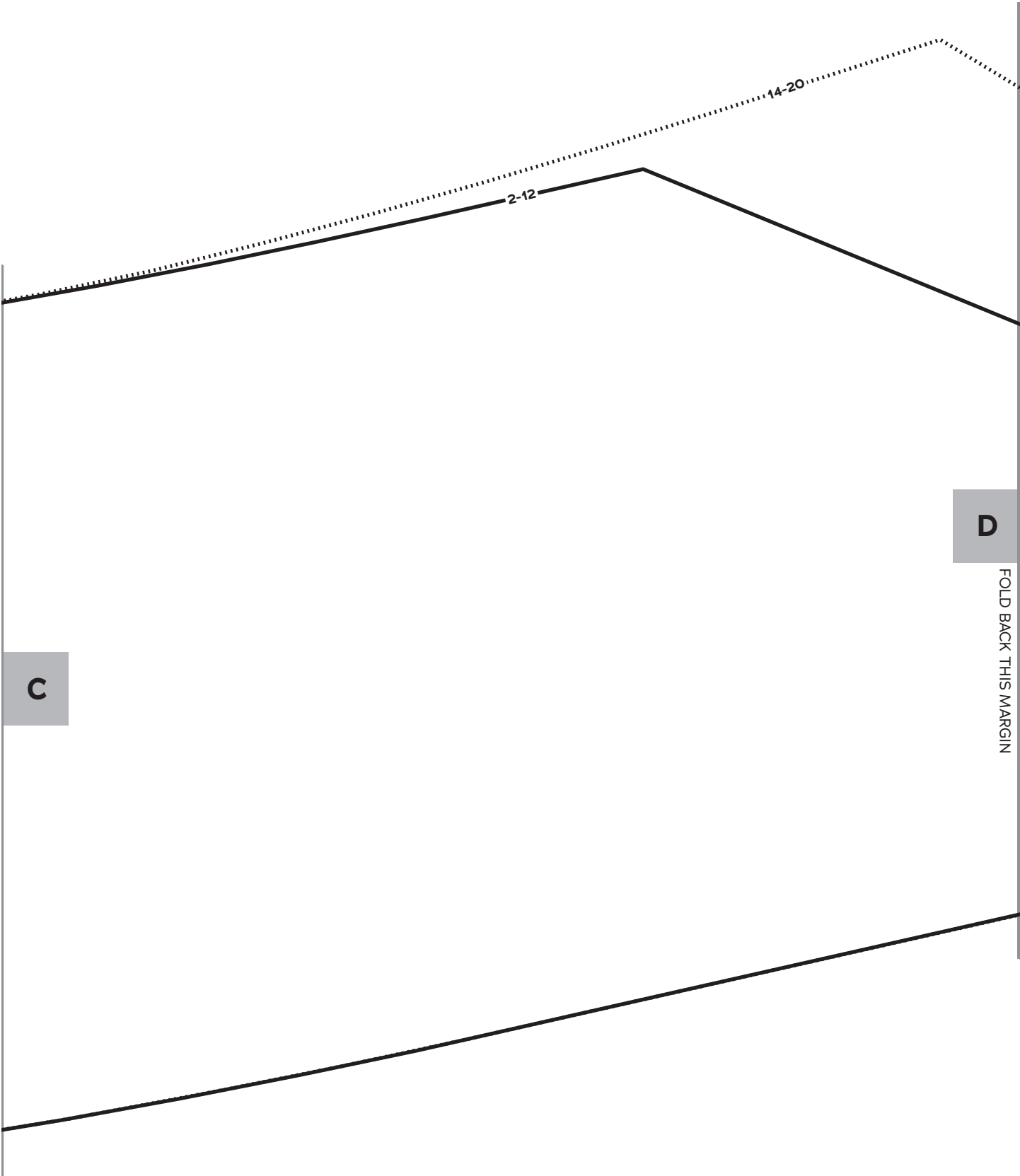
FOLD BACK THIS MARGIN

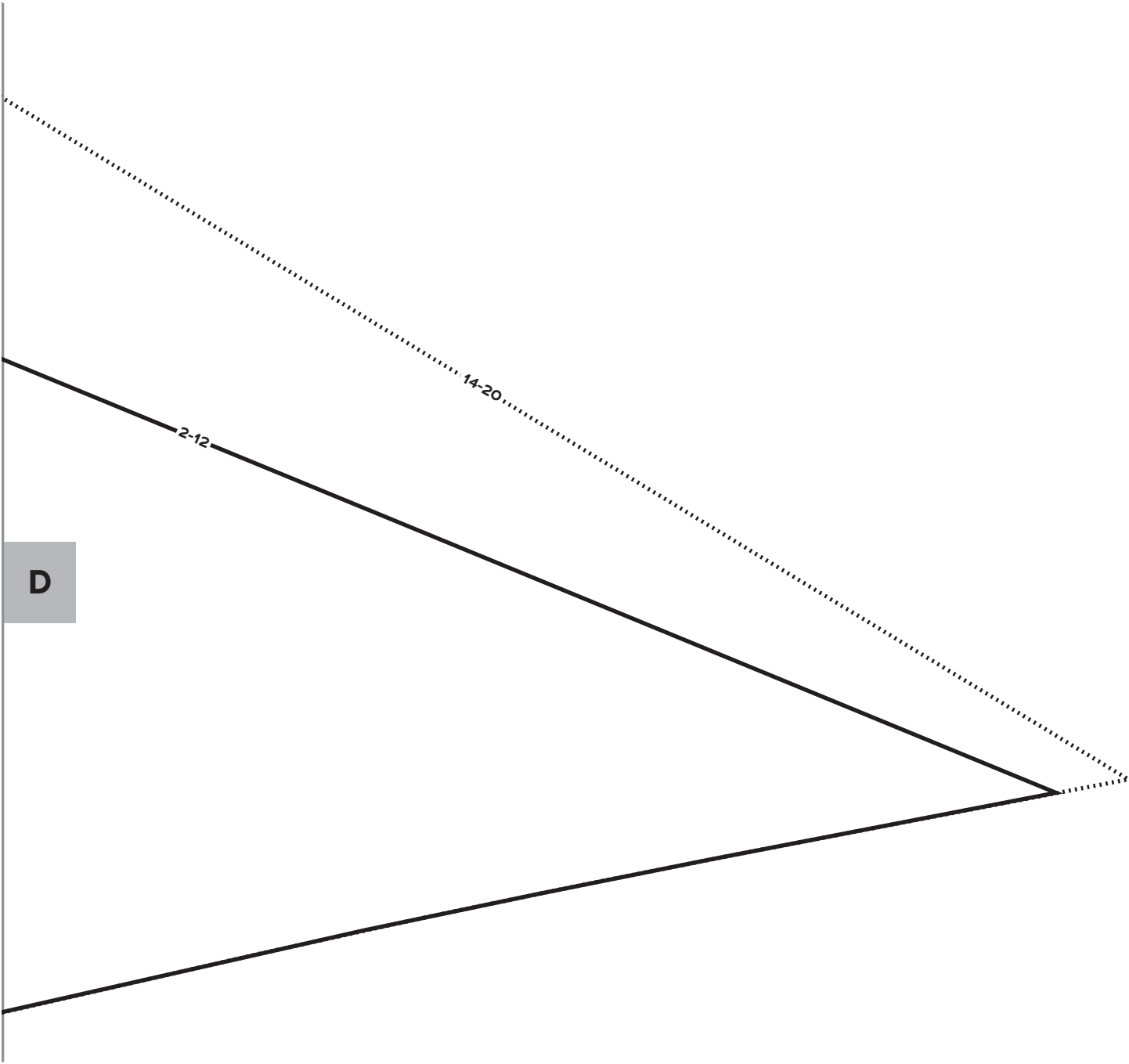


B

C

FOLD BACK THIS MARGIN





MORE FROM GERTIE

[On Instagram:](#) Stay in the loop and get inspired.

[On YouTube:](#) Learn beginner and advanced sewing skills and techniques through my tutorials, watch episodes of my Gertie's World series, and join regular live streams.

[On Patreon:](#) Access monthly patterns and tutorial videos.

[At CharmPatterns.com:](#) Shop my sewing patterns and accessories.

