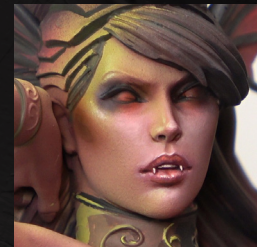
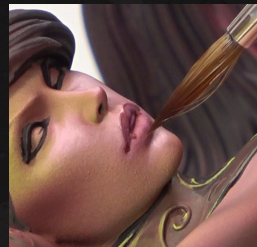
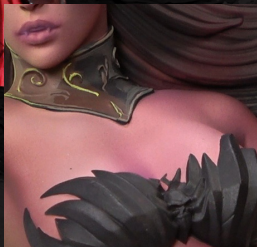




Sergio
CALVO
miniatures

ENGLISH


LADY SIBILLA



VOL II

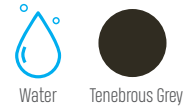


SUMMARY

LADY SIBILLA	03
NMM	03
MAKEUP	06
LIPS	08
TEETH	14
LIPS	15
SHADOW	16
MAKEUP	20
AIRBRUSH	22
COLORS	26
GALLERY	28



06 LADY SIBILLA



NMM

06/14

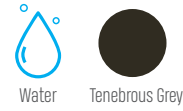
Let's go back using the brush with capibases.

We start covering these details with a first base of dark color (e.g. using any color except black).





06 LADY SIBILLA



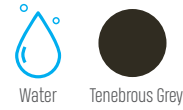
NMM

06/14





06 LADY SIBILLA



NMM

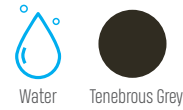
_____ 06/15

And the same for the bracelet.





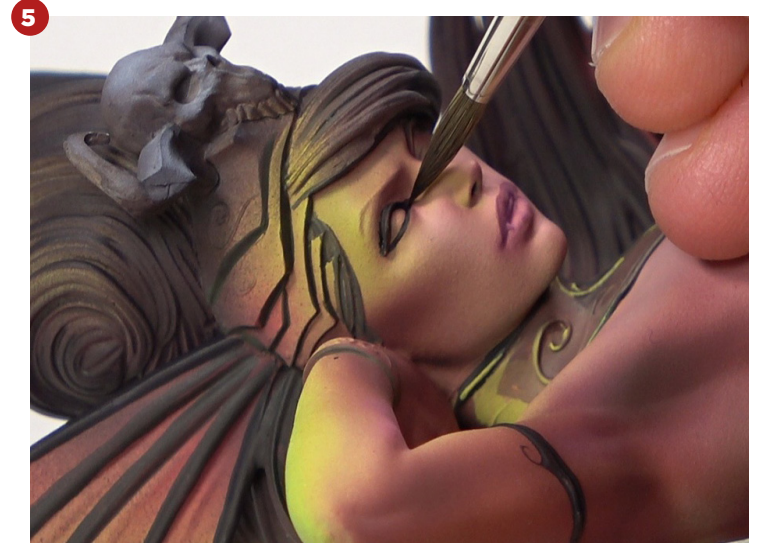
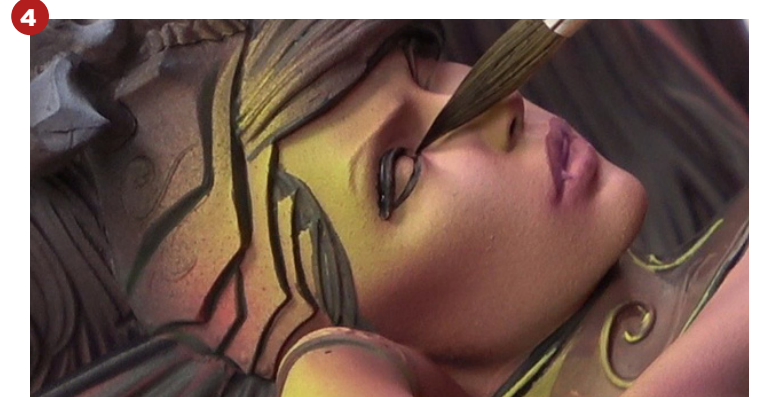
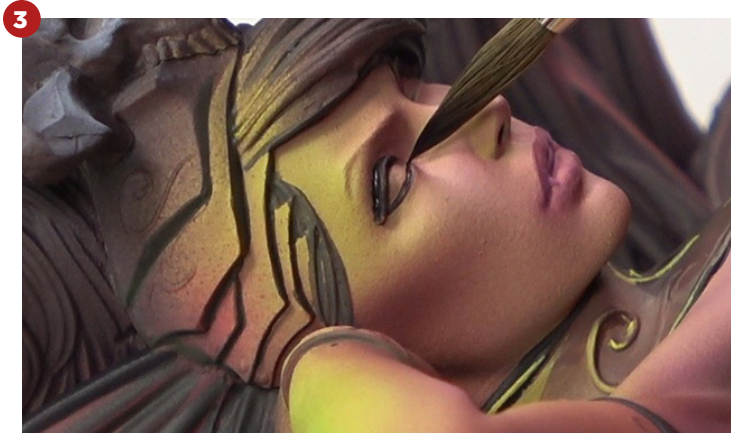
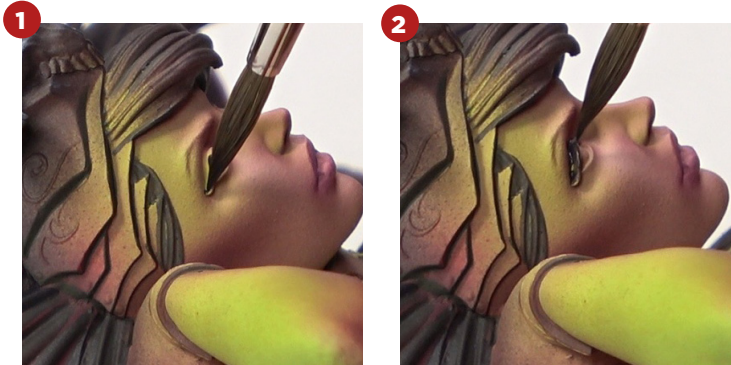
06 LADY SIBILLA



MAKEUP

06/16

Now, let's start creating the eye makeup.





06 LADY SIBILLA

MAKEUP

06/17

For this occasion, what we are going to do is to create a more youthful looking makeup, with a very luminous and radiant skin. The key here will be to create a very subtle contrast except on the sides (i.e., cheekbones).



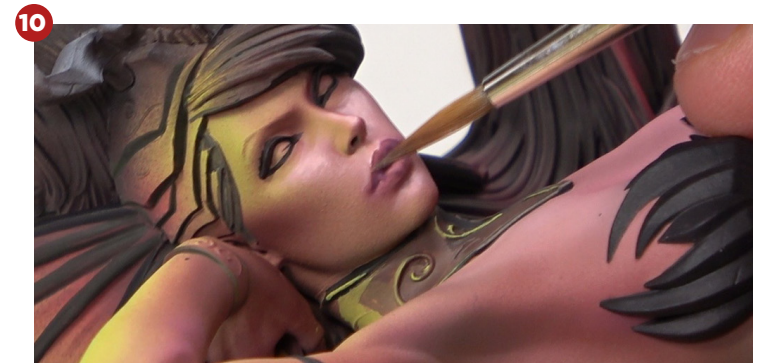
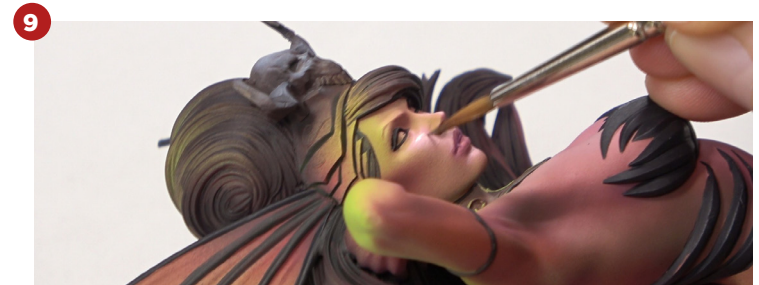
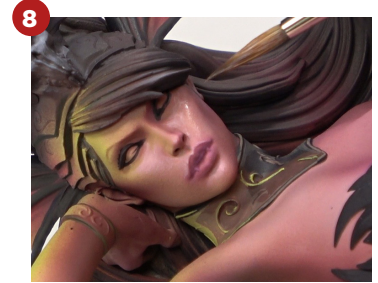
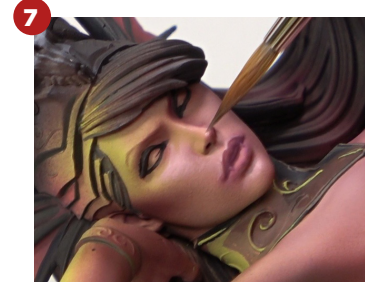
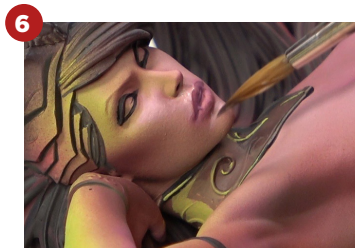
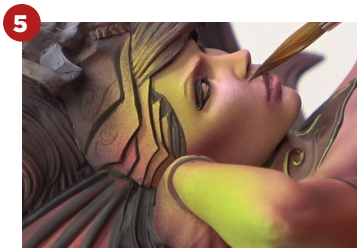
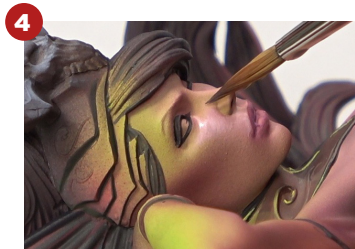
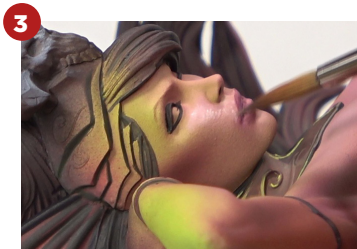
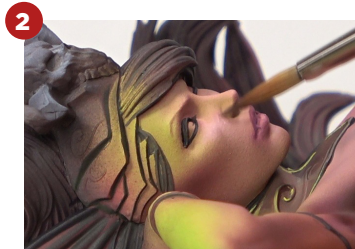
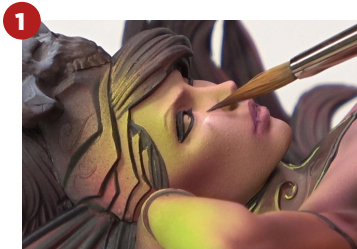
Water



Old Rose



Sickly Pink





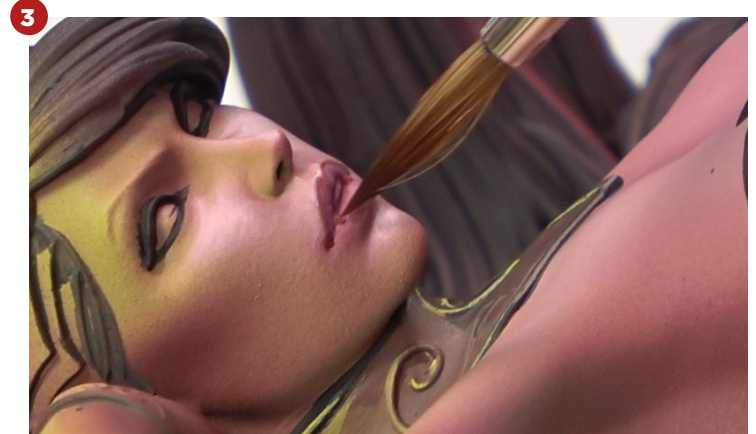
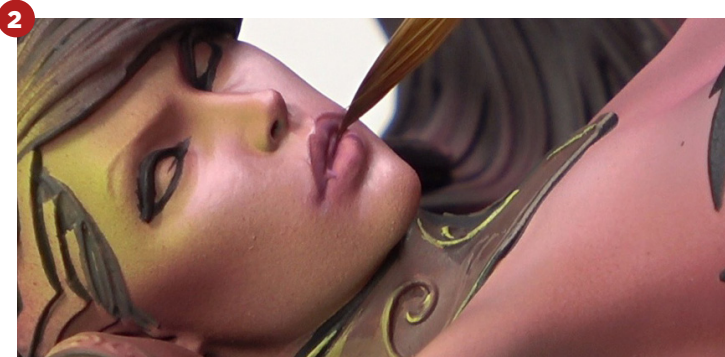
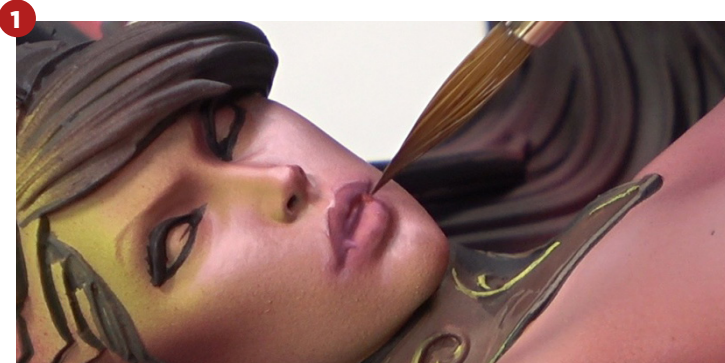
06 LADY SIBILLA



LIPS

06/18

We can also focus on those key areas that interest us most: in this case, the lips. We will outline them at the top and at the bottom, focusing on a single point.





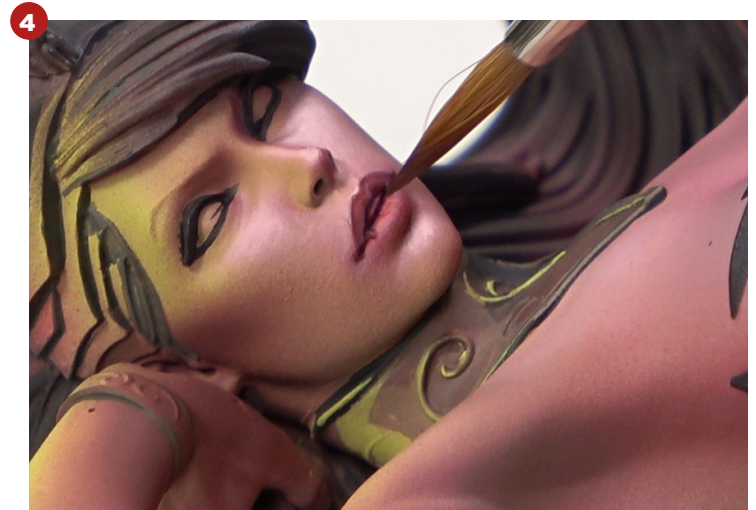
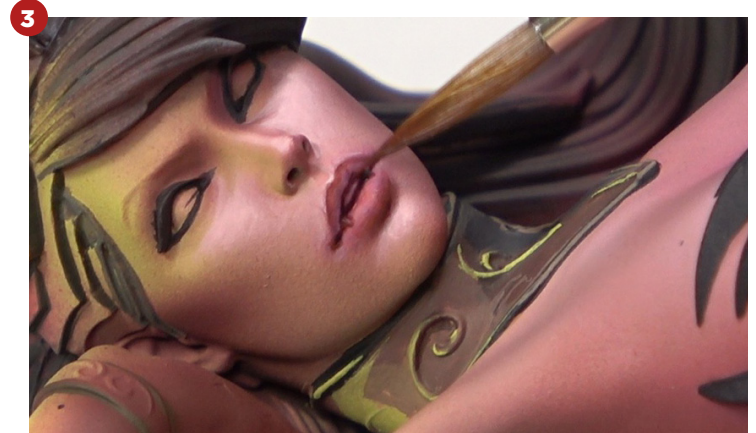
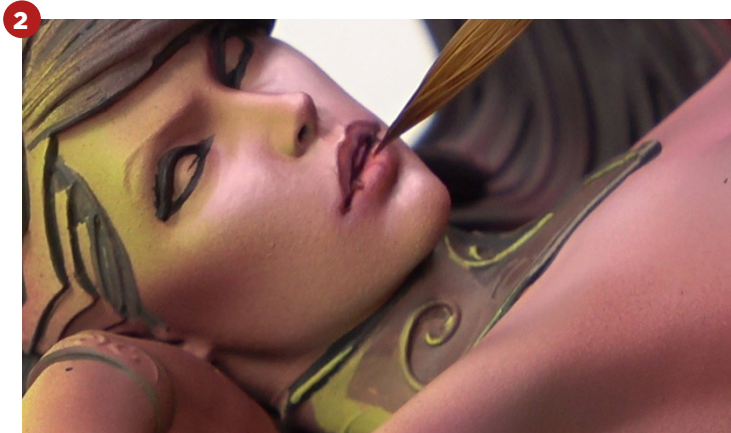
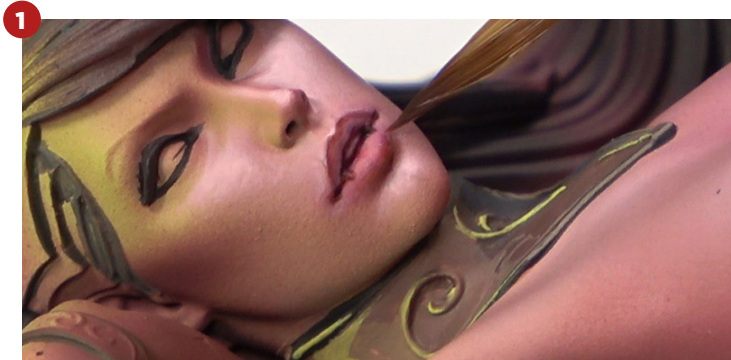
06 LADY SIBILLA



LIPS

06/19

We will add texture to the lips to define it.





06 LADY SIBILLA



Water



Sickly Pink



Bloody Red

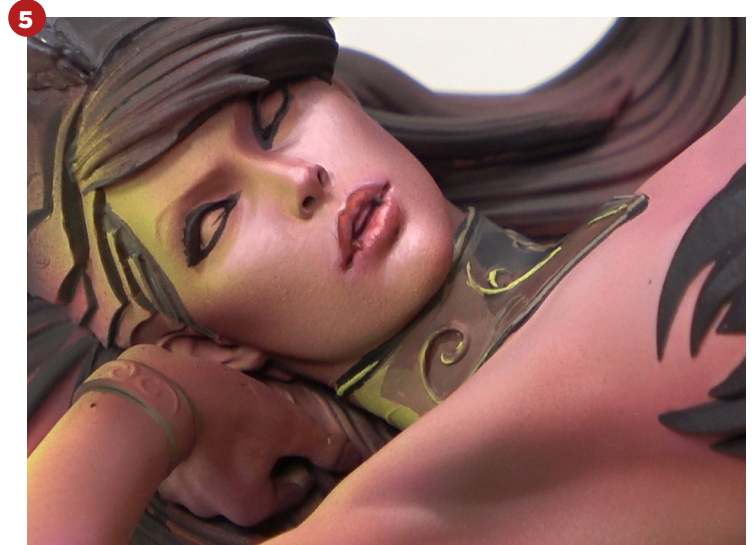
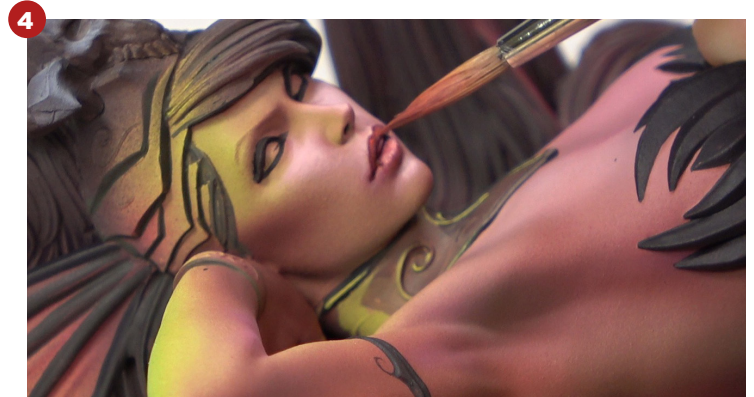
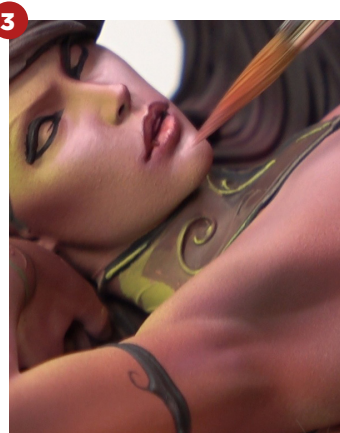
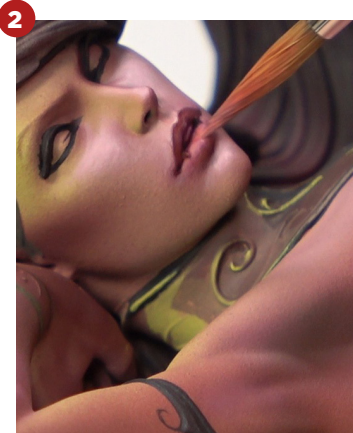
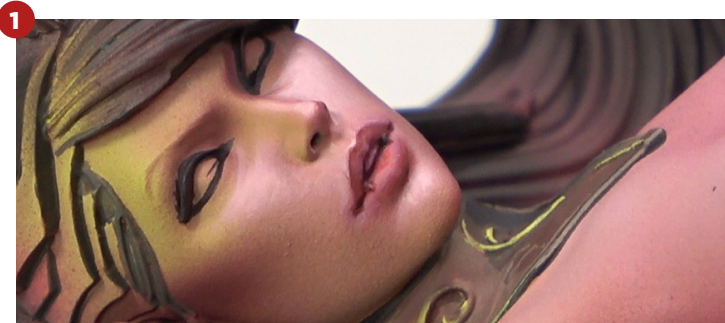


Bloody Red

LIPS

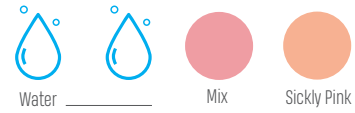
06/20

With this we will be playing with the effect that the lower lip is fuller and the upper lip is thinner.





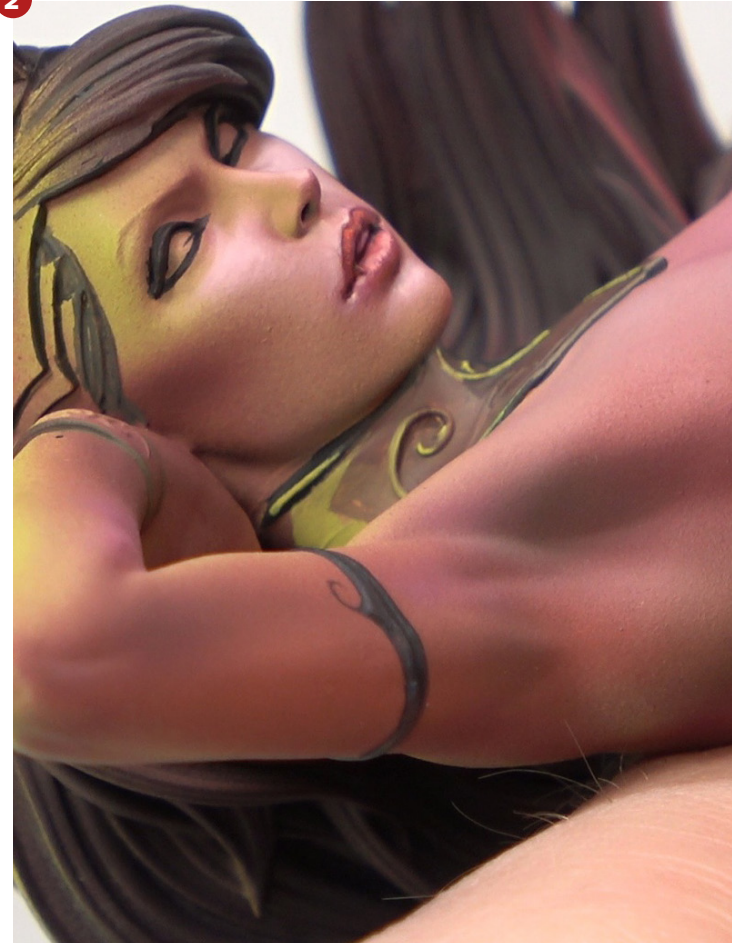
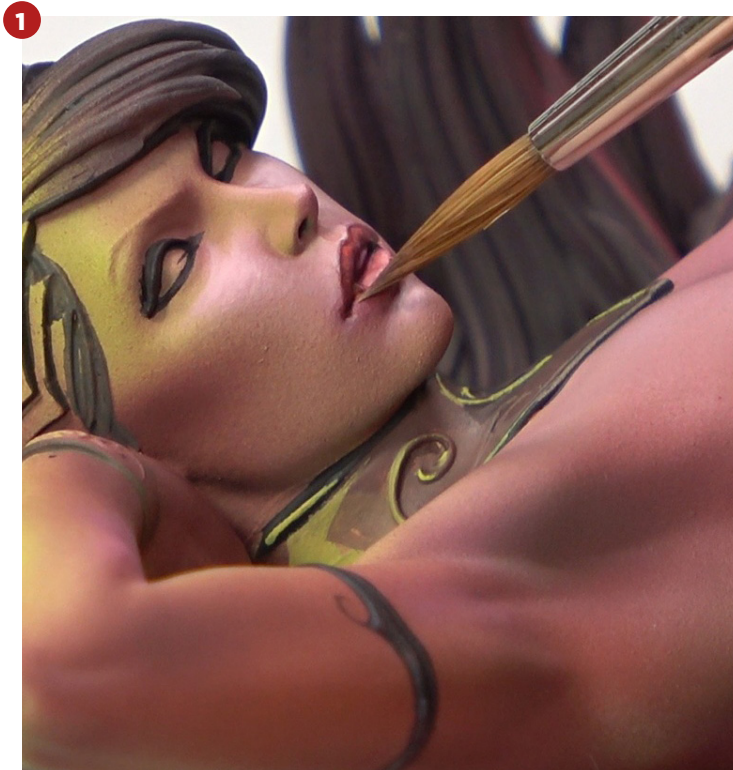
06 LADY SIBILLA



LIPS

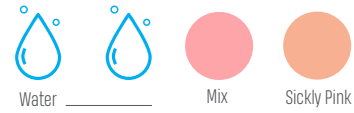
06/21 **2**

Finally, we can create a glossy effect. We do not want the upper lip to be completely in shadow, so we will play more with the saturation.





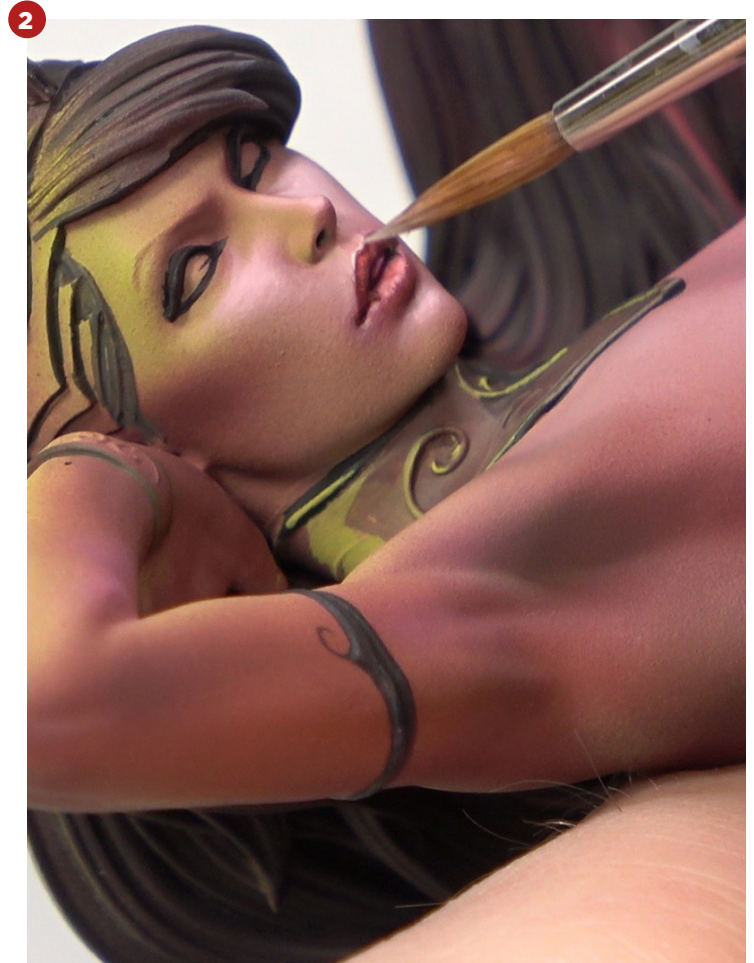
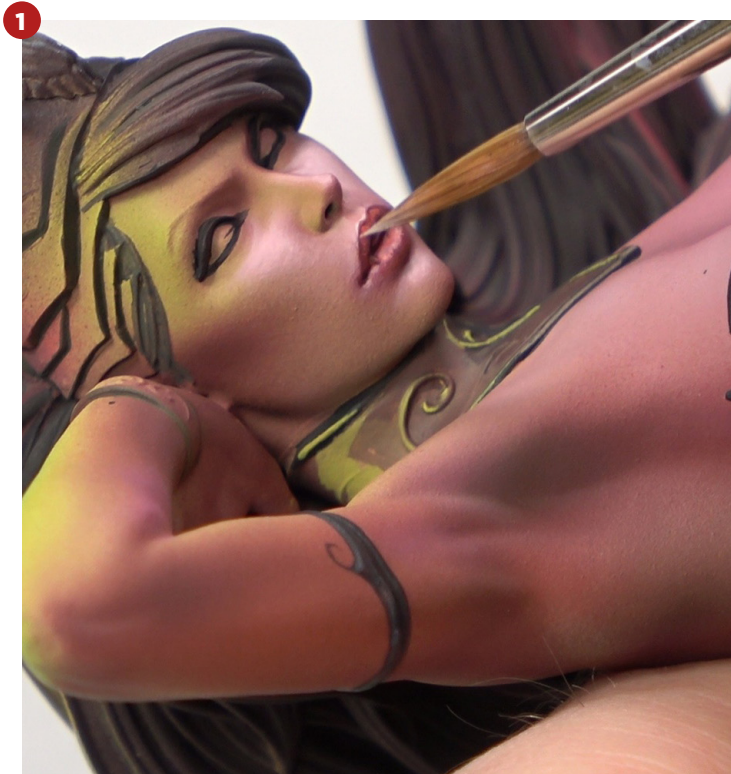
06 LADY SIBILLA



LIPS

06/22

And be careful with the corners of the lips, they will help us to create the effect that the mouth is bigger. We can also highlight the M that forms on the upper lip.





06 LADY SIBILLA



Water

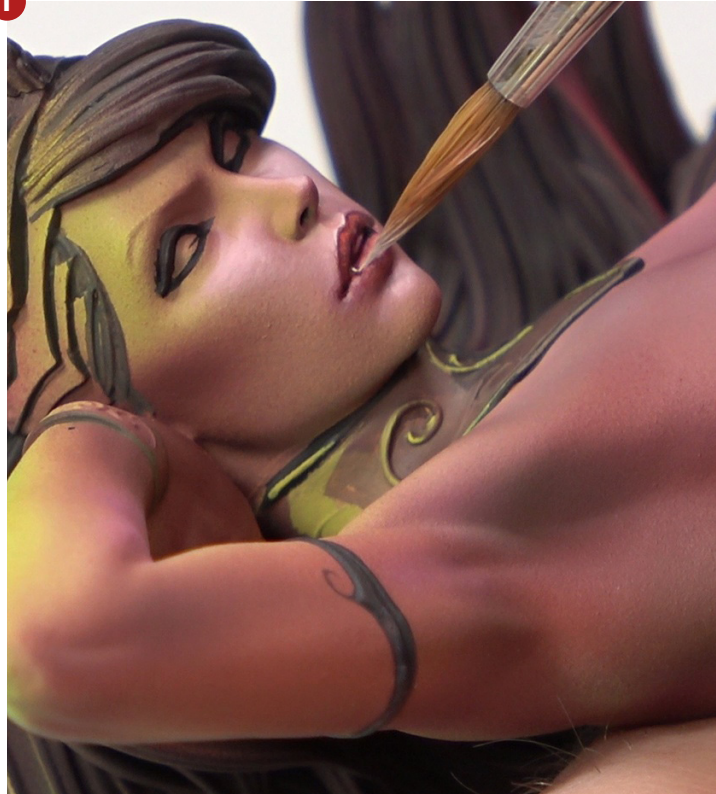


Sickly Pink

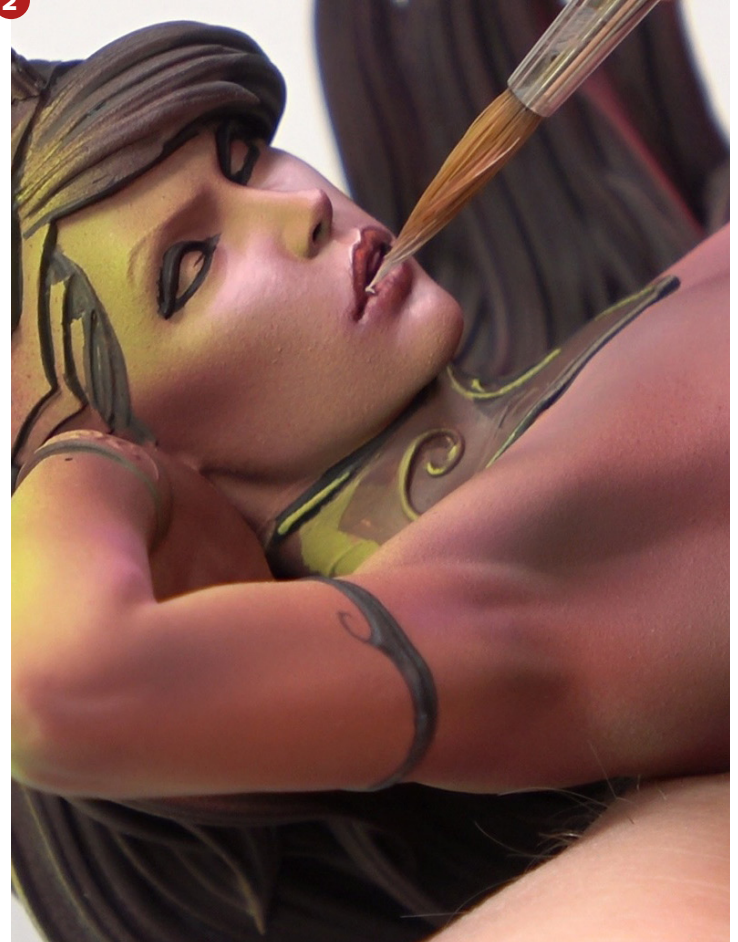
LIPS

06/23

1



2



In this way, the lip is completely drawn.



06 LADY SIBILLA



Water



Sickly Pink

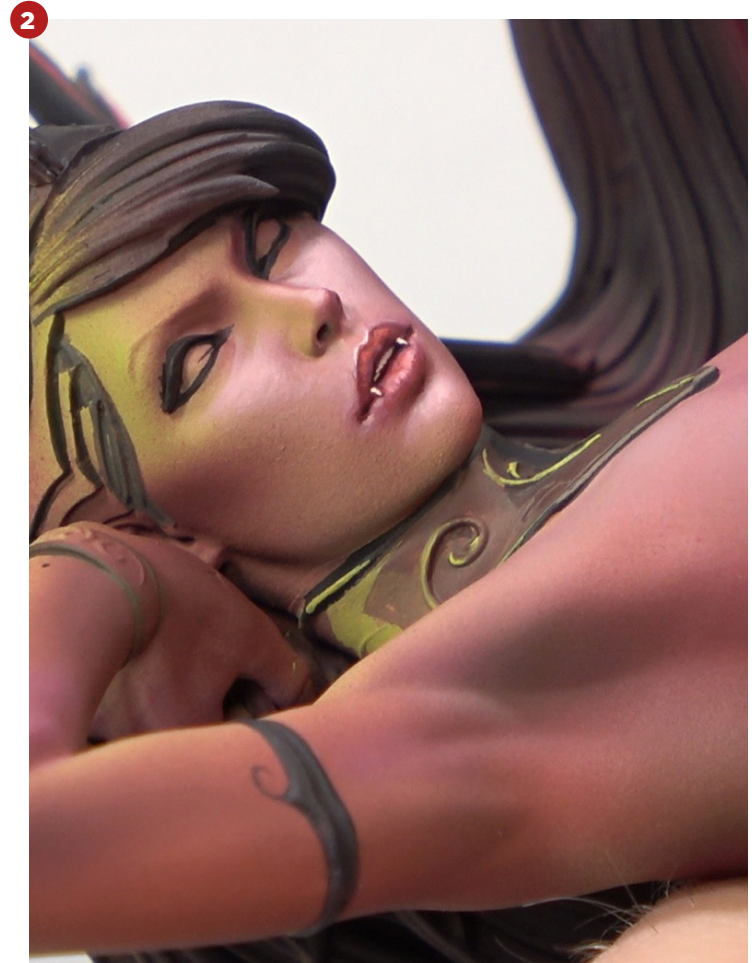


Hull Red

TEETH

06/24

And now, let's give a little shine to the teeth and the fangs themselves.





06 LADY SIBILLA



Water



Sickly Pink

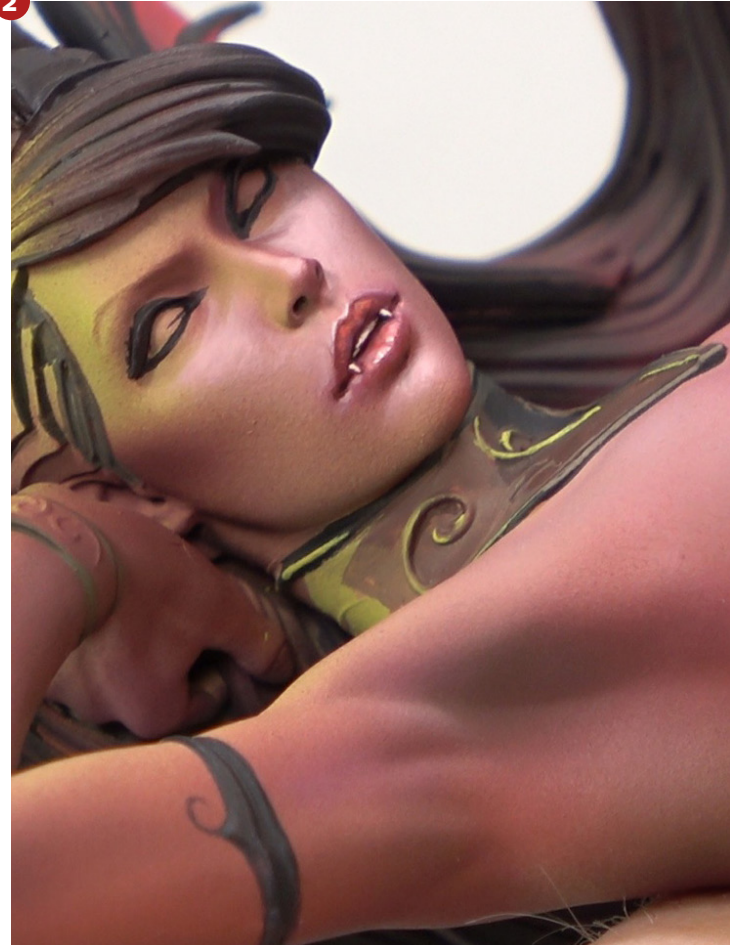
LIPS

06/25

1

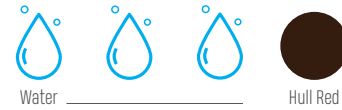


2





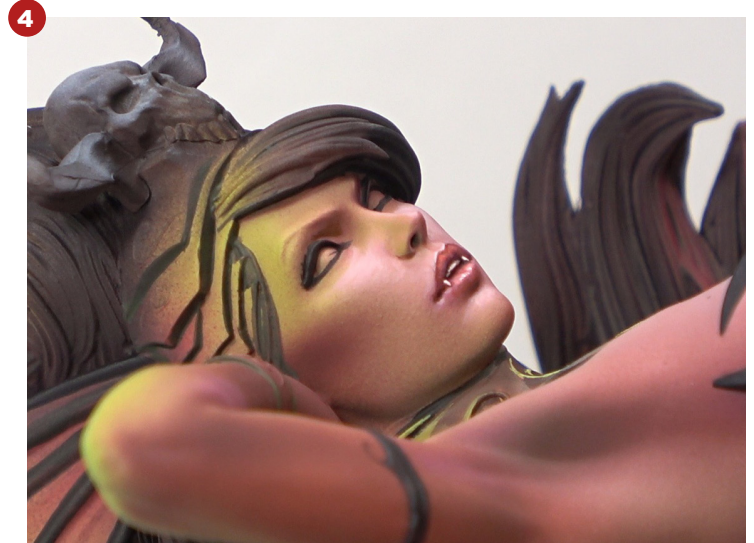
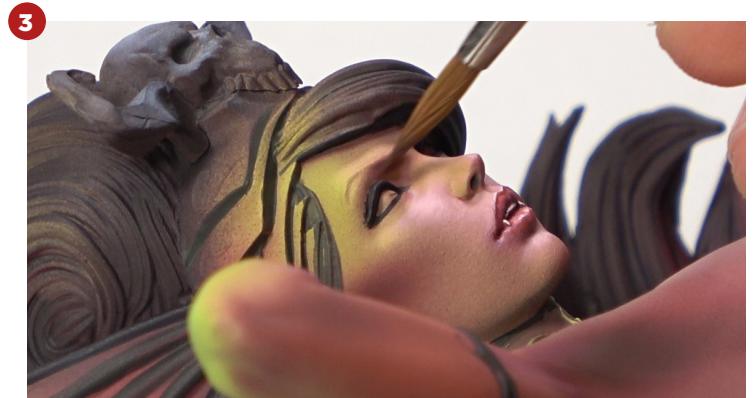
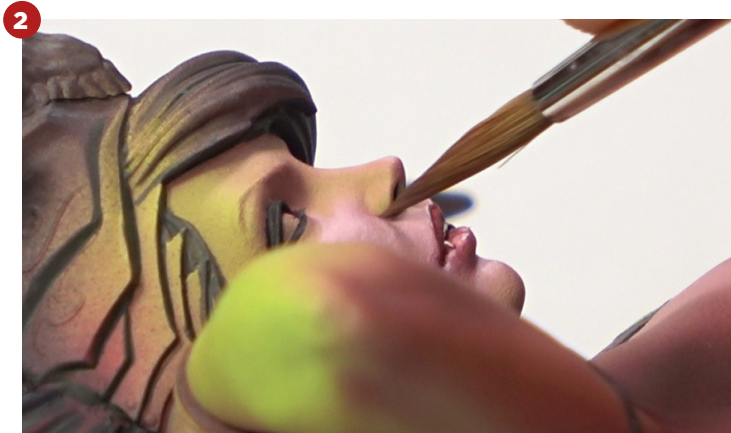
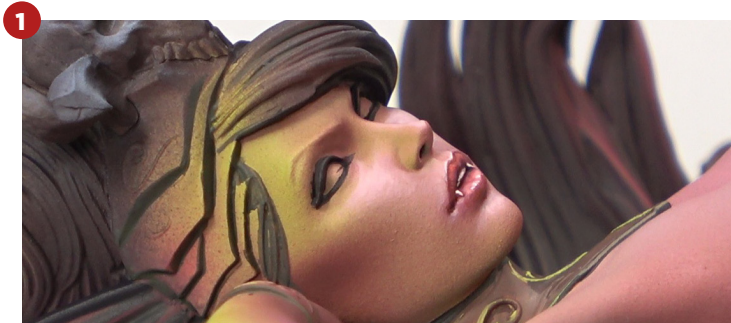
06 LADY SIBILLA



SHADOW

06/26

Defining the nose is as easy as this. In addition, we can introduce that same shadow in the part closest to the tear trough of the eye with the same intention.





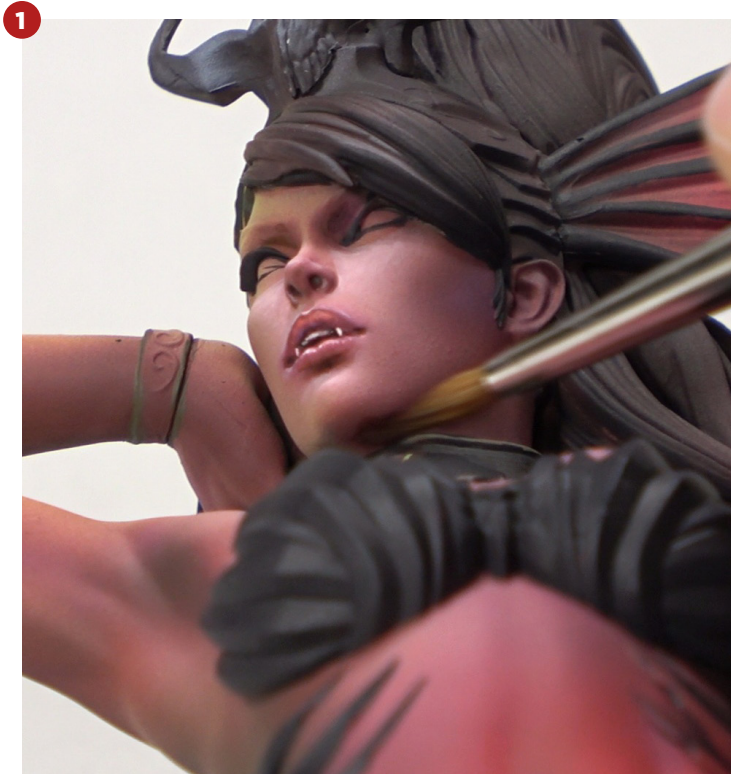
06 LADY SIBILLA



SHADOW

06/27

And another very interesting example is to force the jaw to make it look stronger and more aggressive. For this, we are going to introduce a darker color that cuts out the very sharp line of the jaw.





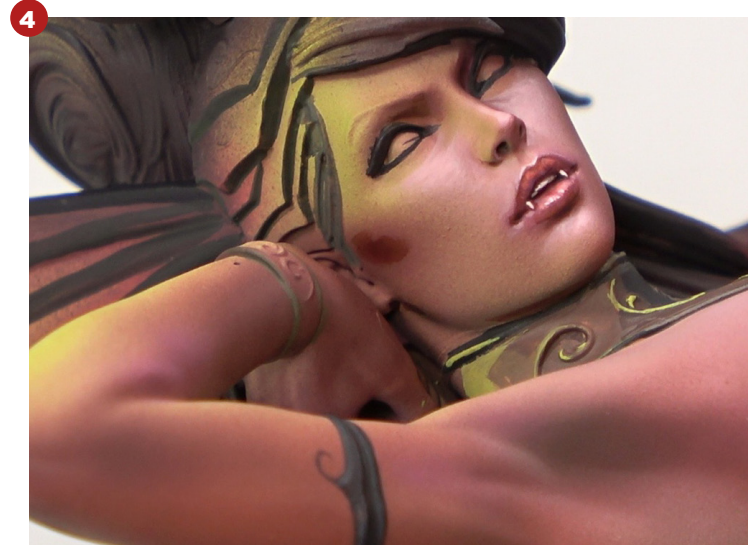
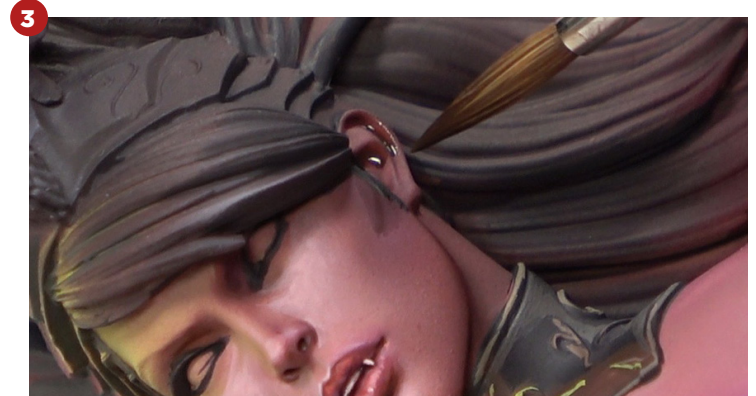
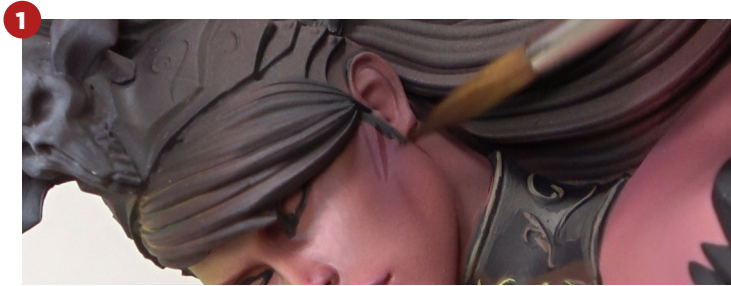
06 LADY SIBILLA



SHADOW

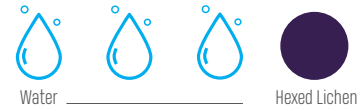
06/28

Next, we can make this triangle on the cheekbones to enhance them. This way we integrate the shadow that we have also introduced on the jawline. Now I know that it is very distinct, but we will soften it later with the airbrush.





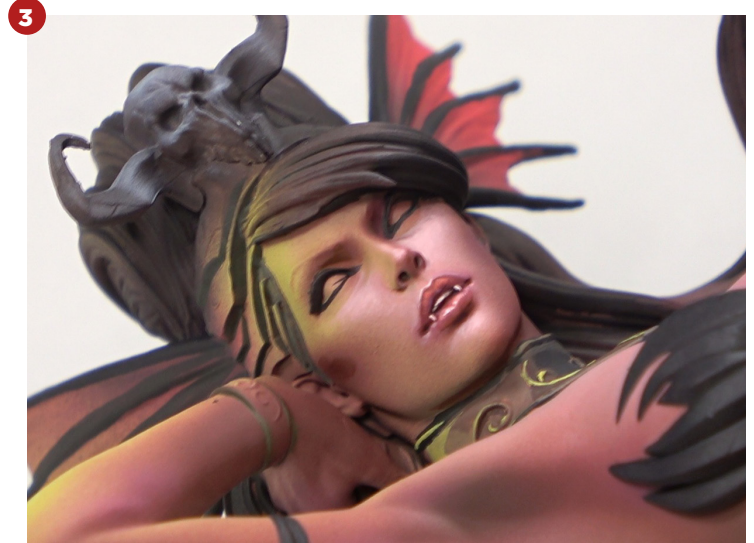
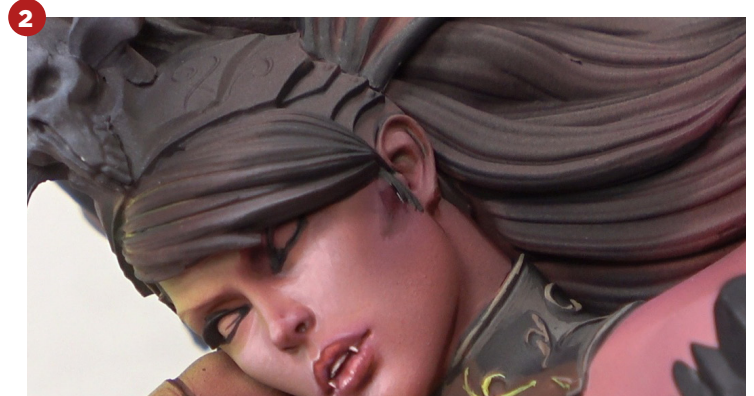
06 LADY SIBILLA



SHADOW

06/29

We can also introduce a different shade with this purple.





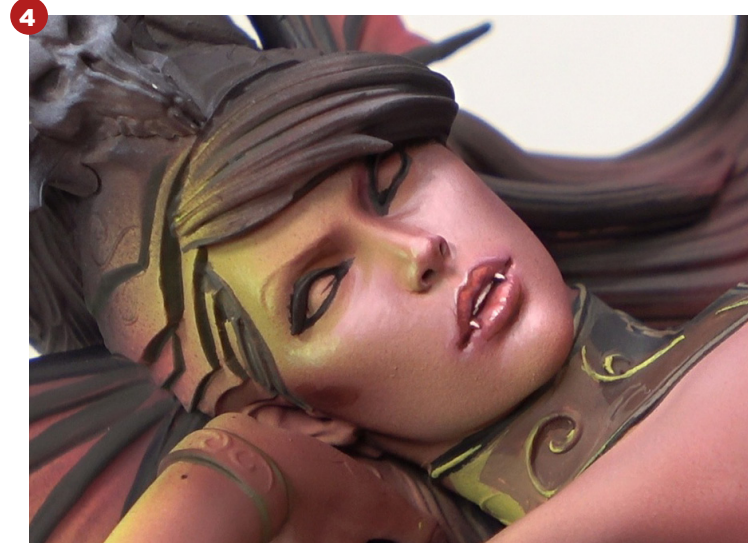
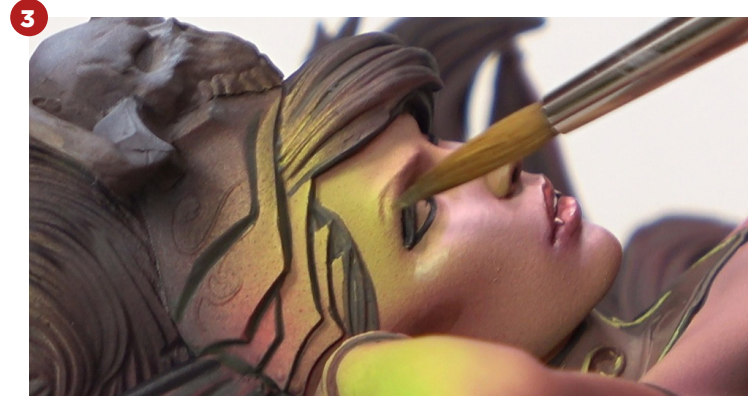
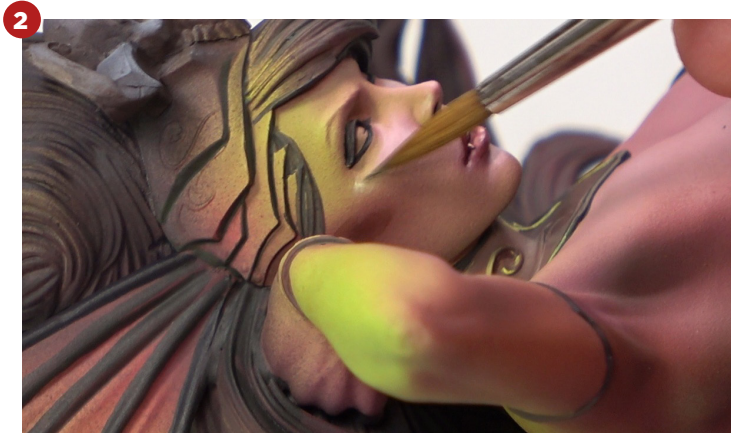
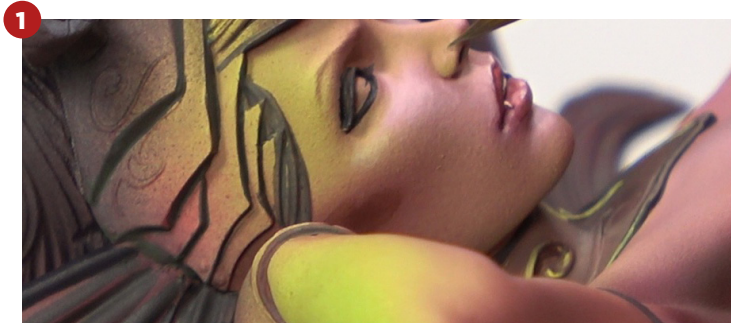
06 LADY SIBILLA



MAKEUP

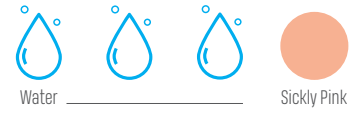
___ 06/30

And on the upper part of the cheekbone, we are going to create that more illuminated area. (Although this time we have to introduce the same color we used to create the light.)





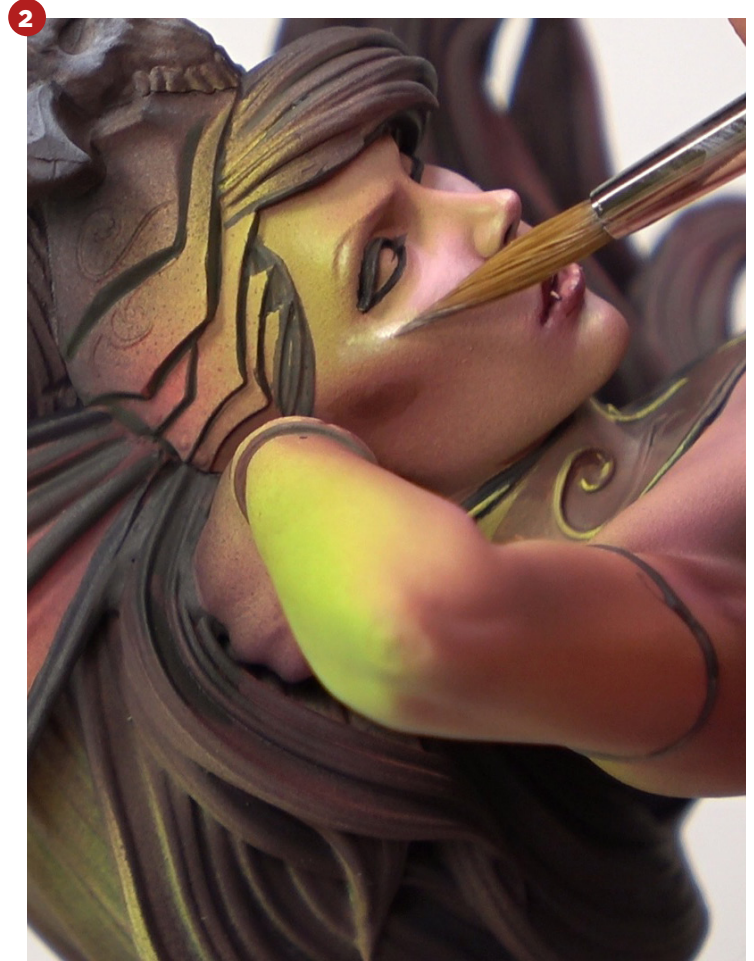
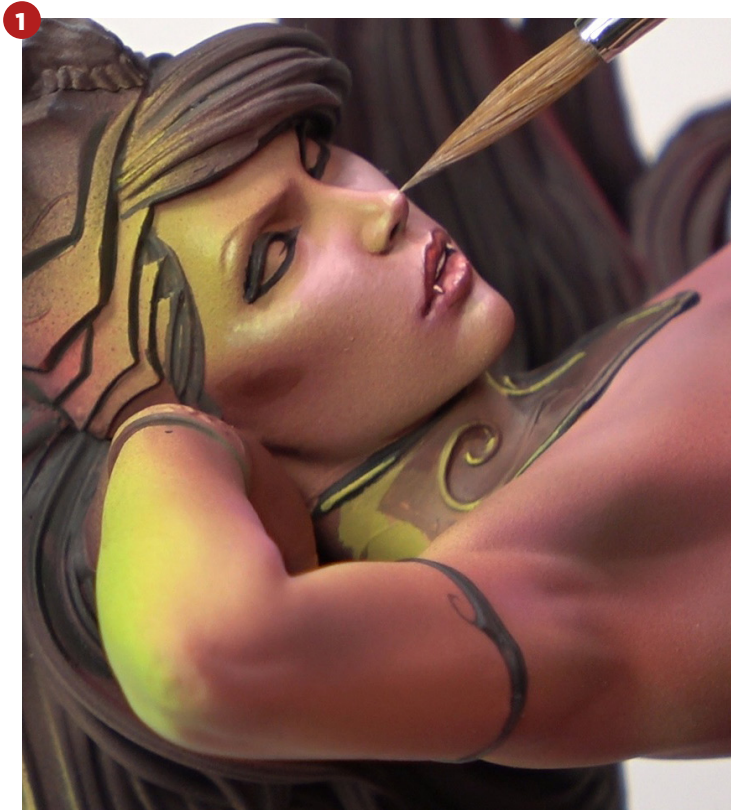
06 LADY SIBILLA



MAKEUP

06/31

And in those areas where we have placed light, we can mark it more obviously.



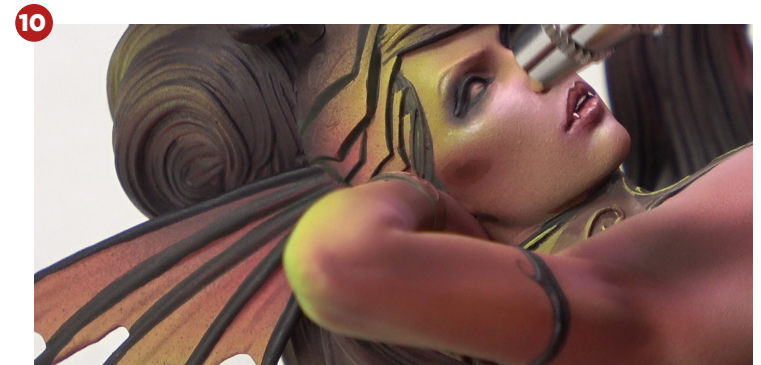
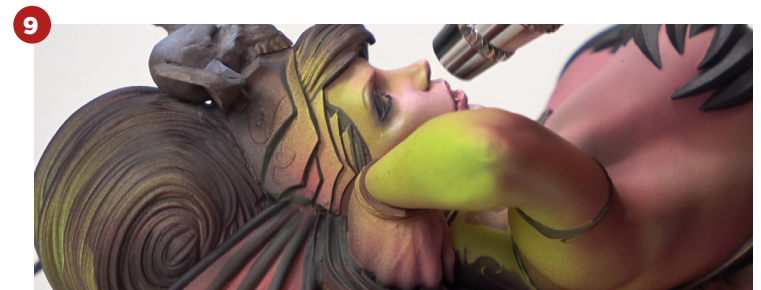
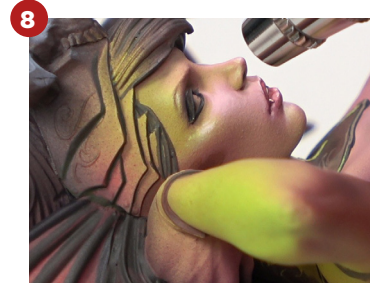
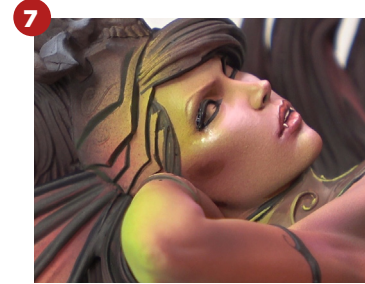
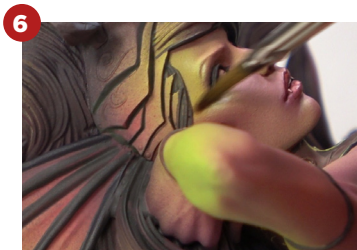
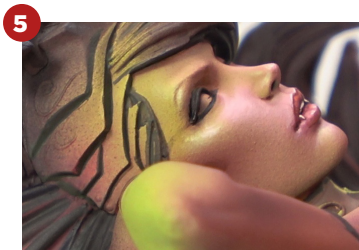
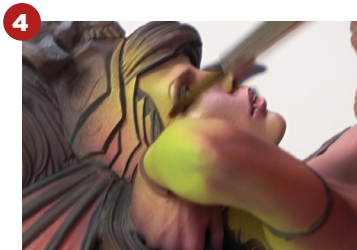
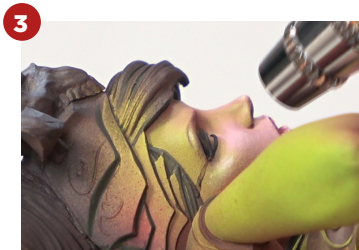


06 LADY SIBILLA

AIRBRUSH

06/32

We continue creating the smoky eyes with the airbrush. And as you can see, even if we get "spider legs" from the airbrush, they can be fixed if we use the brush with a lot of water as we clean the area in different directions.





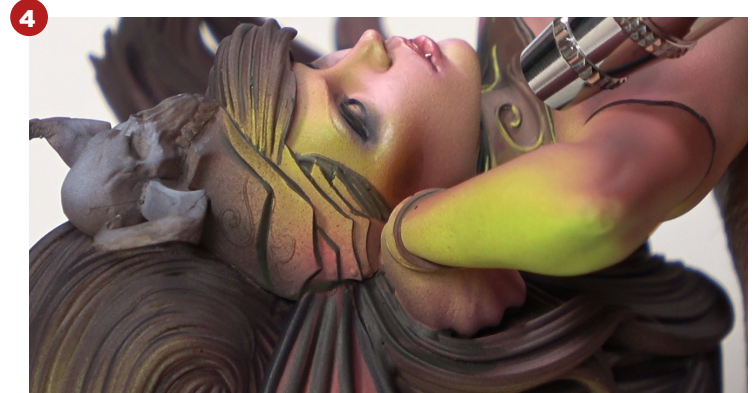
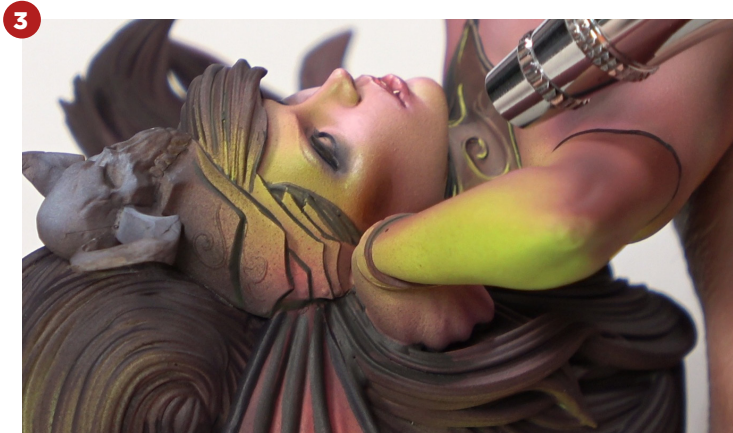
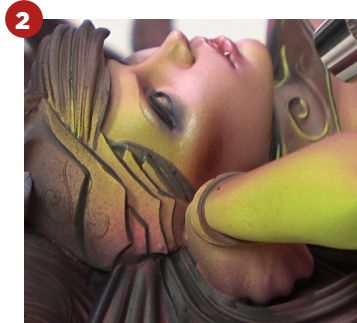
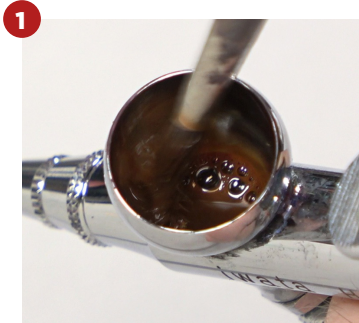
06 LADY SIBILLA



AIRBRUSH

06/33

We are going to create with the airbrush with a filter or glaze to be able to soften what we did before with the brush on the cheekbones. This is to create a gradient with the airbrush on the surface that we have worked previously.





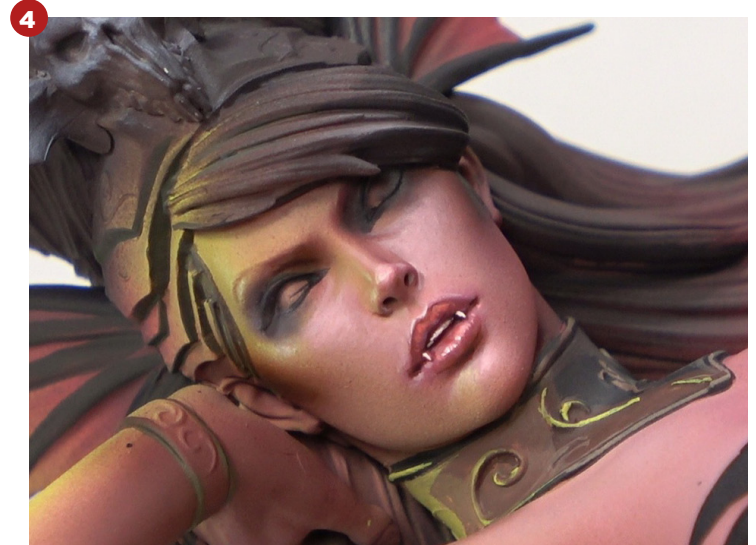
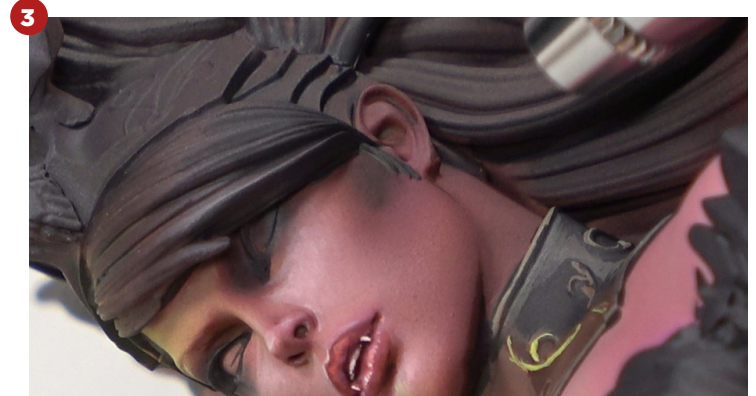
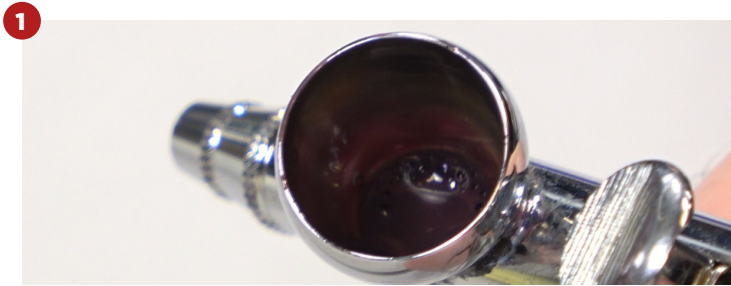
06 LADY SIBILLA



AIRBRUSH

06/34

And now that we softened the other side of the face, we are going to introduce a cooler color such as violet.





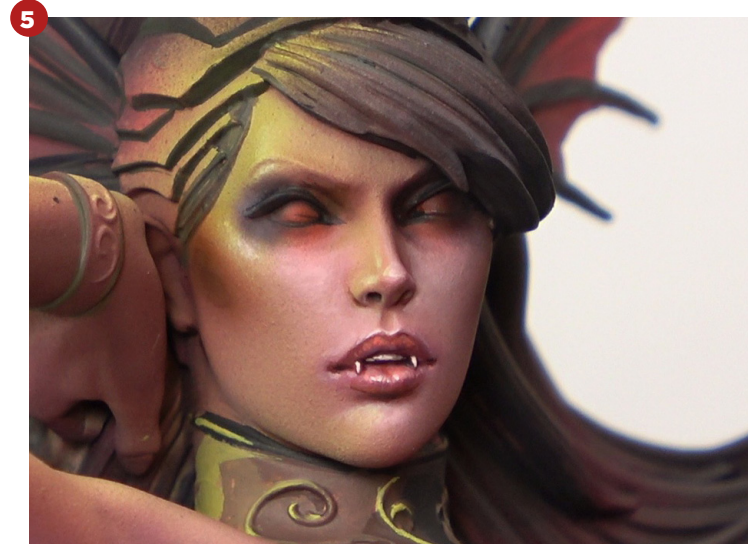
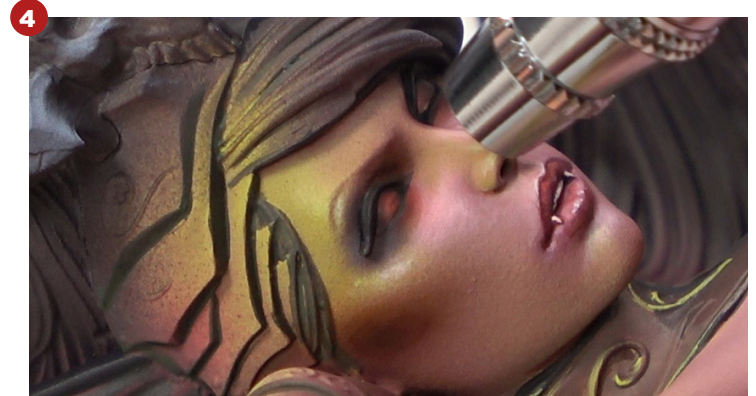
06 LADY SIBILLA



AIRBRUSH

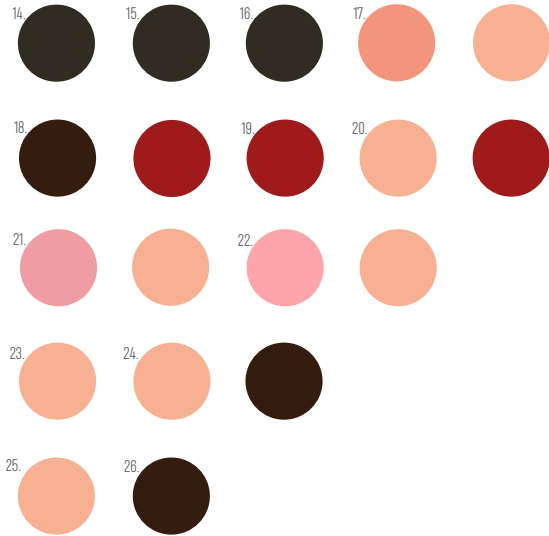
06/35

In the eyes we can introduce this red color to increase the intensity to the look. I hope you liked this tutorial, see you in the next one!





07 COLORS



- 14. Tenebrous Grey
- 15. Tenebrous Grey
- 16. Hull Red and Bloody Red
- 17. Sickly Pink and Bloody Red X 2
- 18. Mix and Sickly Pink
- 19. Sickly Pink and Hull Red
- 20. Hull Red

- 21. Tenebrous Grey
- 22. Old Rose and Sickly Pink
- 23. Bloody Red
- 24. Mix and Sickly Pink
- 25. Sickly Pink
- 26. Sickly Pink





07 COLORS



27. Hull Red and Tenebrous Grey
29. Hexed Lichen
31. Sickly Pink
33. Hull Red
35. Bloody Red

28. Mix and Tenebrous Grey
30. Pastel Pink and Luminous Green
32. Tenebrous Grey
34. Hull Red and Hexed Lichen





08 GALLERY





08 GALLERY





08 GALLERY





08 GALLERY





08 GALLERY





LADY SIBILLA

VOL II



sergiocalvominiatures.com



patreon.com/sergiocalvominiatures



[instagram.com/sergiocalvominiatures](https://www.instagram.com/sergiocalvominiatures)



www.facebook.com/sergiocalvominiatures

CREDITS

Paint
Sergio Calvo

Edition and Correction
Vanessa Sáez y Marta Torres

Design and Layout
Antonio García

Translation
Garin Liu