



# Charm Scout Capelet

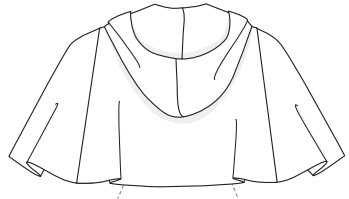
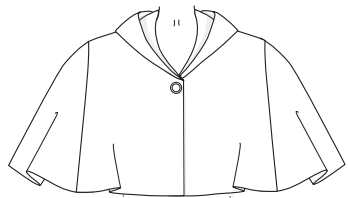
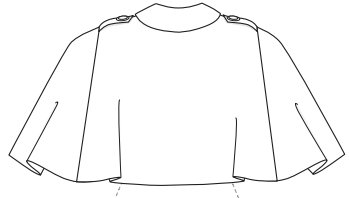
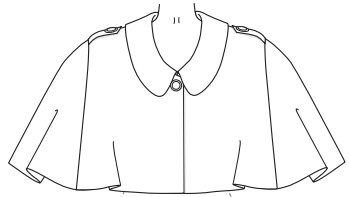
A PATREON EXCLUSIVE PATTERN



Welcome to Camp Gertie! We're giving Patreon a fun new twist this year: you're all officially Charm Scouts so of course you need a snazzy uniform. Make a capelet that would make Phyllis Neffler proud! This design is also interchangeable with the Hooded Princess Coat Expansion from February 2020, so you can make a hooded capelet, or even a Princess Coat with a removable capelet! Don't forget to watch this month's video to see how the capelet comes together.



xoxo, *Gertie*



## SIZE CHART

The Charm Scout Capelet is sized in women's US 2–20, A–H cup sizes. Use the chart below to pick your size. First, measure your high bust (under your armpits and above your breasts) and your full bust (the fullest part of your bust). Make sure to hold the measuring tape snug and parallel to the ground. Take the waist measurement at the smallest part of your waist and the hip measurement at the widest part of your hips. Note that it is best to choose your size by your bust measurements (and add or remove from the side seams at the waist if needed). Compare your body measurements to the size chart. First, find your high bust measurement on the chart to determine your top size and then scan down the cup sizes in that column to find the cup size that matches your full bust measurement. For instance, a 37-inch (in) high bust makes you a size 10, and a 39-in full bust puts you in an A–DD cup.

	2	4	6	8	10	12	14	16	18	20
High Bust	29 in 73.7 cm	31 in 78.7 cm	33 in 83.8 cm	35 in 88.9 cm	37 in 94 cm	39 in 99 cm	41 in 104.1 cm	43 in 109.2 cm	45 in 114.3 cm	47 in 119.4 cm
Bust A cup	30.5 in 77.5 cm	32.5 in 82.5 cm	34.5 in 87.6 cm	36.5 in 92.7 cm	38.5 in 97.8 cm	40.5 in 102.9 cm	42.5 in 108 cm	44.5 in 113 cm	46.5 in 118.1 cm	48.5 in 123.1 cm
Bust B/C cup	31 in 78.7 cm	33 in 83.8 cm	35 in 88.9 cm	37 in 94 cm	39 in 99 cm	41 in 104.1 cm	43 in 109.2 cm	45 in 114.3 cm	47 in 119.4 cm	49 in 125 cm
Bust D/DD cup	32 in 81.3 cm	34 in 86.4 cm	36 in 91.4 cm	38 in 96.5 cm	40 in 101.6 cm	42 in 106.7 cm	44 in 111.8 cm	46 in 116.8 cm	48 in 121.9 cm	50 in 127 cm
Bust F/G cup	33 in 83.8 cm	35 in 88.9 cm	37 in 94 cm	39 in 99 cm	41 in 104.1 cm	43 in 109.2 cm	45 in 114.3 cm	47 in 119.4 cm	49 in 125 cm	51 in 129.5 cm
Bust H cup	34 in 86.4 cm	36 in 91.4 cm	38 in 96.5 cm	40 in 101.6 cm	42 in 106.7 cm	44 in 111.8 cm	46 in 116.8 cm	48 in 121.9 cm	50 in 127 cm	52 in 132.1 cm
Waist	24 in 61 cm	26 in 66 cm	28 in 71.1 cm	30 in 76.2 cm	32 in 81.3 cm	34 in 86.4 cm	36 in 91.4 cm	38 in 96.5 cm	40 in 101.6 cm	42 in 106.7 cm
Hips	36 in 91.4 cm	38 in 96.5 cm	40 in 101.6 cm	42 in 106.7 cm	44 in 111.8 cm	46 in 116.8 cm	48 in 121.9 cm	50 in 127 cm	52 in 132.1 cm	54 in 137.2 cm

## FIT NOTES

The Charm Scout Capelet fits differently from any pattern we've ever published, as it encompasses the arms and bust as one. We still recommend that you use your usual Charm Patterns size. When referring to the finished bust measurement below, note that the measurement will encapsulate both your torso and your arms (you can check the fit by wrapping a tape measure around your upper body and arms at the bust level; note that the capelet has quite a bit of ease due to the fluttery shape of the sleeves). The cup sizing on this design is a little different than our other patterns. Because this capelet has a very flexible fit, we have grouped more cup sizes together than usual: A–DD and F–H. The larger cup sizes have additional length at the capelet front to prevent the garment from riding up. Please note that the front length measurement is taken from the inner shoulder seam to the bottom of the capelet.

	2	4	6	8	10	12	14	16	18	20
Bust Level	77 in 195.6 cm	79 in 200.7 cm	81 in 205.7 cm	83 in 210.8 cm	85 in 216 cm	87 in 221 cm	89 in 226.1 cm	91 in 231.1 cm	93 in 236.2 cm	95 in 241.3 cm
Hem Sweep	96 in 243.8 cm	98 in 248.9 cm	100 in 254 cm	102 in 259.1 cm	104 in 264.2 cm	106 in 269.2 cm	108 in 274.3 cm	110 in 279.4 cm	112 in 284.5 cm	114 in 289.6 cm
Front Length A-DD	15.5 in 39.4 cm	15.75 in 40 cm	16 in 40.6 cm	16.25 in 41.3 cm	16.5 in 41.9 cm	16.75 in 42.5 cm	17 in 43.2 cm	17.25 in 43.8 cm	17.5 in 44.5 cm	17.75 in 45.1 cm
Front Length F-H	16.75 in 42.5 cm	17 in 43.2 cm	17.25 in 43.8 cm	17.5 in 44.5 cm	17.75 in 45.1 cm	18 in 45.7 cm	18.25 in 46.4 cm	18.5 in 47 cm	18.75 in 47.6 cm	19 in 48.3 cm

## MATERIALS & NOTIONS

- Fabric for capelet
- Fabric for underlining (optional, see notes below)
- Lining fabric
- Fusible interfacing for facings and upper collar
- Thread to match your fabric
- Piping (optional)
- Large snap
- 1-in-wide buttons (You'll need three buttons for the version with epaulets and only one button if omitting the epaulets)

## RESOURCES

Here are some of the fabrics and supplies I used for the samples and in the video tutorial. There are lots of places to purchase fabric, so this is solely a guide you can use as a reference:

[Double Wool Crepe](#) (note that the fabric linked here is only available wholesale, but other sources sell double wool crepe by the yard)

[Charmeuse Lining Fabric](#)

[Piping \(Color Jungle Green\)](#)

Buttons ([purchased at this NYC store](#)):

[Wool Coating for Hooded Version](#)

[Faux Fur](#)

[Weft Fusible Interfacing](#)



## FABRIC NOTES

### For cold-weather outerwear:

Medium- to heavy-weight wool and wool blend coating and suiting fabrics, melton wool, boiled wool, bouclé, wool flannel, tweed, or double crepe.

### For warmer-weather versions:

medium-weight silks and cottons like sateen, satin, twill, brocade, dupioni, denim, or corduroy.

**For rainwear:** laminated cottons and waterproof rainwear fabrics.

**For the lining:** light- to medium-weight silks and lining fabrics.

**Interfacing:** weft insertion or light- to medium-weight woven fusible interfacing.

## PATTERN PIECES

### 1. Capelet Front

Cut 2 fabric

### 2. Capelet Back

Cut 1 fabric on fold

### 3. Capelet Sleeve

Cut 2 fabric, 2 lining

### 4. Front Facing

Cut 2 fabric,  
2 interfacing

### 5. Back Neckline Facing

Cut 1 fabric on fold,  
1 interfacing on fold

### 6. Upper Collar

Cut 1 fabric on fold,  
1 interfacing on fold

### 7. Under Collar

Cut 1 fabric on fold

### 8. Epaulet

Cut 4 fabric, optional

### 9. Lining Front

Cut 2 lining

### 10. Lining Back

Cut 1 lining on fold



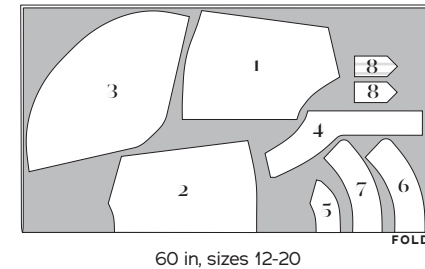
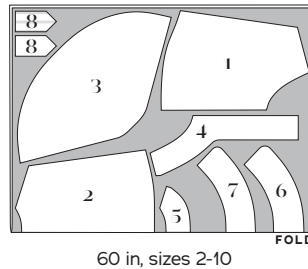
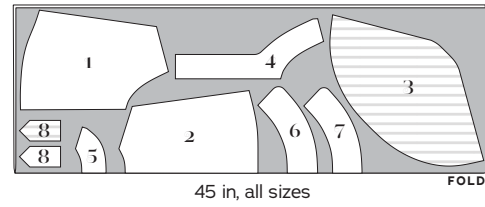
## REQUIRED YARDAGE & CUTTING LAYOUTS

**Note:** All pattern pieces are shown in a “without nap” layout. You may need additional yardage for directional prints, stripes, plaids, and other prints that need to be matched across seamlines.

### Main Fabric

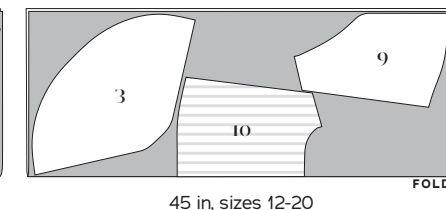
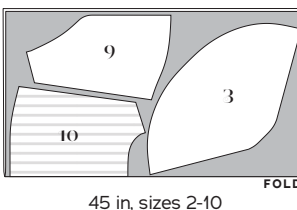
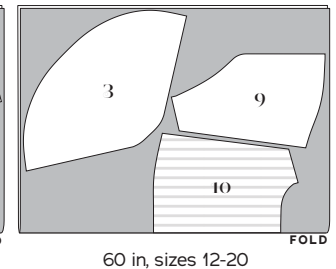
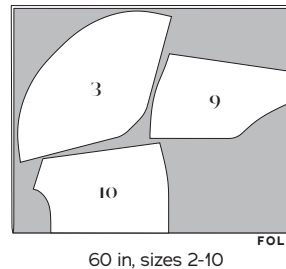
(1, 2, 3, 4, 5, 6, 7, 8)

	Sizes 2-10	Sizes 12-20
45 in	1 <sup>7</sup> / <sub>8</sub> yds 1.7 m	2 yds 1.8 m
60 in	1 <sup>1</sup> / <sub>4</sub> yds 1.1 m	1 <sup>5</sup> / <sub>8</sub> yds 1.5 m



### Lining Fabric (3, 9, 10)

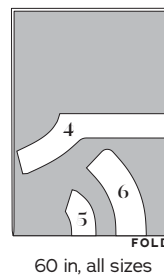
	Sizes 2-10	Sizes 12-20
45 in	1 <sup>1</sup> / <sub>4</sub> yds 1.1 m	1 <sup>3</sup> / <sub>4</sub> yds 1.6 m
60 in	1 <sup>1</sup> / <sub>8</sub> yds 1 m	1 <sup>1</sup> / <sub>4</sub> yds 1.1 m



### Interfacing

(4, 5, 6)

	All sizes
60 in	<sup>3</sup> / <sub>4</sub> yds 0.7 m



### KEY TO LAYOUTS



Right side of  
pattern piece



Wrong side of  
pattern piece

Be sure to note whether the pieces are cut on a double or single layer of fabric. For a double layer, there will be a note indicating FOLD on the layout.

# SEWING INSTRUCTIONS

## BEFORE SEWING

**Transferring marks:** Use dressmaker's tracing paper and a tracing wheel to transfer all pattern markings to the wrong side (WS) of your fabric. Mark pattern notches by snipping into the seam allowance with the tip of your scissors.

## NOTES

- 5/8-inch (in) (1.5 cm) seam allowances are included on all pattern pieces, except where otherwise noted.
- Apply fusible interfacing to all indicated pieces prior to sewing.
- Seam finishing is unnecessary for this project, as all seams are fully enclosed by the lining.
- If your outer fabric is lighter in color than your lining, then you may wish to underline your capelet to prevent show-through. Cut pieces 1, 2, and 3 in an opaque fabric (I used cotton batiste in white, since the drape of the batiste matched my outer fabric and the white brightened the pale pink of the capelet). Baste the underlining pieces to your outer fabric, using a long machine stitch and a 1/2-in seam allowance. Treat the two layers as one throughout construction.
- Piping is optional but can provide a fun contrast look to key elements like the collar and epaulets. I used ready-made packaged piping but you can also make your own using bias strips and cotton cord. To insert piping, first baste the piping to one half of the seam you will be piping. (For instance, if you are piping the collar, first baste piping to either the upper or under collar.) Pin the piping to the garment piece so that the flange of the piping (that's the seam allowance part of the piping) is positioned within the seam allowance and the corded part of the piping is just outside of the seam allowance, where it will show after the seam is sewn. Using a zipper foot, baste the piping in place close to the stitching on the piping. When it is time to sew the seam that you are piping, place the two pieces right sides together, with the piping sandwiched in between. Stitch from

the side with the piping basting stitches, and make sure to stitch just to the left of the basting stitches. Check your piping from the right side to make sure you have stitched as close as possible to the piping cord, otherwise you will see the stitching on the piping. If needed, you can go back and stitch closer. Trim, grade, clip/notch curves, understitch, and press the seam as usual.

- Sewing the hooded capelet with fur trim: you can use the hood pattern piece from the Hooded Princess Coat Expansion with this capelet! Omit the collar and epaulets, and sew the hood as for the coat expansion. I added fur trim by sandwiching folded strips of faux fur between the capelet and lining layers: Cut strips of fur that are 3.75 in wide and long enough to go around the edge you are embellishing (you can seam the fur if needed). Fold the strips in half lengthwise, wrong sides together, and baste to the capelet, raw edges aligned. Stitch seams with fur strips sandwiched in between.

## SEWING THE CAPELET

**1. Sew shoulder seams:** pin Capelet Fronts (1) to Capelet Back (2) right sides (RS) together at shoulder seams. Press seam allowances open.

**2. Make epaulets (optional):** if desired, first apply piping to one set of Epaulets (8). Place epaulet pieces RS together (so you have two pairs) and stitch, leaving short straight end open. Trim seam allowances, cutting away bulk from corners. Turn RS out and press flat. Baste epaulets to RS on outer shoulder of capelet, centering epaulet over shoulder seam, using circle marks as a guide.

**3. Sew sleeve to capelet:** using a long gathering stitch (4 mm to 5 mm), sew 2 lines of stitches along each Sleeve (3) "cap" between notches. Sew the first line using a 1/2-in-wide (1.3 cm) seam allowance. Repeat with a 1/4-in-wide (6 mm) seam allowance. Pull up bobbin threads and distribute ease evenly to avoid any visible gathers or tucks on seamline. Pin the sleeve to the capelet RS together, matching notches and adjusting the ease as needed. Stitch. Notch sleeve seam allowance around cap, clip capelet seam allowance, and press seam allowances open.

**4. Sew collar:** pipe Upper Collar (6) if desired. Pin upper collar to Under Collar (7) around outer edges, RS together, leaving notched neckline edge open. Stitch. Grade seam allowances so that upper collar's is slightly wider than under collar's. Notch curves. Turn collar RS out. With the uninterfaced collar opened out and seam allowances underneath, understitch outer edge from RS 1/8 in (3 mm) from seamline, catching seam allowances in stitching. Press collar pieces flat, turning seamline slightly to WS so it is hidden on the uninterfaced collar side. NOTE: Interfaced side of collar will be on the outside. Baste raw edges of collar together.

**5. Baste collar** to capelet neckline, matching notches and aligning collar's ends at front neckline circles.

**NOTE:** If you are applying a Charm Scout badge to your capelet by machine, do so now, positioning the badge on the left chest area.

**6. Assemble facing unit:** pin Front Facings (4) to Back Neckline Facing (5) at shoulder seams. Stitch and press seam allowances open.

**7. Assemble lining unit:** fold Lining Back (10) in half, RS together, and stitch along marked pleat lines at center back. Press pleat to one side. Staystitch back neckline using 1/2-in seam allowance. Stitch lining back to Lining Front (9) at shoulder seams. Sew lining sleeves into capelet lining as for outer capelet (step 3). Notch sleeve seam allowances around sleeve cap, clip capelet seam allowances, and press open.

**8. Sew lining to facings:** pin facing unit RS together with lining unit, matching notches and clipping around back neckline if needed. Stitch. Press seam allowances toward lining.

**9. Sew lining to capelet:** pin lining/facing unit to outer capelet, RS together, around all edges and neckline, sandwiching the collar between the layers. Stitch, leaving a 6- to 7-in-long opening at the back hem. Grade seam allowances so that lining/facing's is the narrowest, outer capelet's is the widest, and collar is in between the two widths. Clip into neckline curves and trim away bulk from corners. Turn capelet RS out through opening. Working through opening, understitch the capelet's front facing, catching the seam allowances in stitching. Press edges flat. Close opening with a slipstitch. Pin lining and outer layers together at shoulder seams and stitch in the ditch to secure the layers.

**10. Finishing:** secure epaulets (if applicable) in place by sewing a button at the marked circle through the epaulet and capelet layers. Sew a snap closure at marked X on capelet neckline, lapping the right side of the capelet over the left. Sew a decorative button to the outside of the capelet at the snap location.

*Enjoy your fab new Charm Scout Capelet!*

## PATTERN PIECE LOCATION GUIDE



Here is a list to help you locate the pattern pieces on the letter-size tiled pages and A0 pattern sheets. The tiled pieces and A0 sheets are included as separate pdf files as part of this digital pattern.

PC#	Piece Name	Tiled	A0	PC#	Piece Name	Tiled	A0
1	Capelet Front, A-DD Cups	6-9	1	6	Upper Collar	1-2	1
1	Capelet Front, F-H Cups	16-21	1	7	Under Collar	7-8	2
2	Capelet Back	10-15	1	8	Epaulet	2	2
3	Capelet Sleeve	28-36	2	9	Lining Front, A-DD Cups	25-32	2
4	Front Facing, A-DD Cups	37-40	2	9	Lining Front, F-H Cups	22-27	2
4	Front Facing, F-H Cups	34-35, 37-38, 40	2	10	Lining Back	13-18	1
5	Back Neckline Facing	3	1				

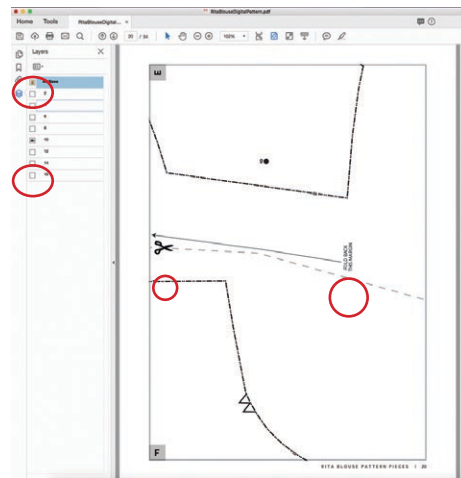
# HOW TO USE THIS PATTERN

The pattern pieces are tiled so you can print them on Letter (8 1/2" x 11") or A4 size paper. You can also send the A0 pattern sheet PDF to a local or online printer (like [www.pdfplotting.com](http://www.pdfplotting.com)) to print on large sheets (36" x 48" for U.S. or AO for international).

This pattern includes size layers. To get the best results, open either the Tiled or A0 pattern pieces PDF in Acrobat Reader.

Open the Layers Palette (View>Show/Hide>Navigation Panes>Layers) and hide all of the layer(s) except for the ones you want to print by clicking on the eye icon.

The All Sizes layer has general pattern information and will always print.



# WORKING WITH THE TILED PIECES

Go to File>Print and change the page range to the pages you need for the pieces you've chosen (see Pattern Pieces Printing Index). Make sure the Page Sizing settings to 100% or Actual Size. Test this after printing by measuring the 1" test box on the first page of the bodice pattern pieces.

Cut apart any pattern pieces that share a page by cutting on the gray long dashed lines. Then fold back the page margins on each page as directed.

Tape the pages together, butting up the folded page edges with the gray margin lines, matching up the letters in gray boxes.

## MORE FROM GERTIE

[On Instagram:](#) Stay in the loop and get inspired.

[On YouTube:](#) Learn beginner and advanced sewing skills and techniques through my tutorials, watch episodes of my Gertie's World series, and join regular live streams.

[On Patreon:](#) Access monthly patterns and tutorial videos.

[At CharmPatterns.com:](#) Shop my sewing patterns and accessories.

