

CHARM
ARTIST
COLLECTIVE



CAROUSEL DRESS

A PATREON EXCLUSIVE PATTERN



I'm so excited to share the darling Carousel Dress with you! Inspired by a true-vintage dress I spotted during one of my Dapper Day adventures, it's extra lovely with stripes and directional prints. Make it with the gathered flounce for lots of sass, or sew it without the flounce for a classically elegant A-line dress. Add piping and layers of tulle for even more drama, and you'll be flouncing your way to your own fantastic adventure, wherever that takes you!

xoxo, *Gertie*

PS: If you love this dress, you're REALLY going to love this month's guest artist design!

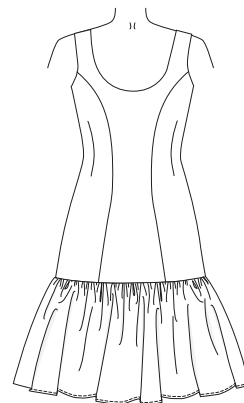
Dress front and back with flounce, piping, and bows



Dress front and back with no flounce



Dress front with flounce, no piping, no bows



KEY SKILLS

- Working with tulle
- Sewing an all-in-one facing
- Playing with piping and bias tubing

SIZE CHART

The Carousel Dress is sized in women's US 2–20 and 18–34, A–H cup sizes. Please use the chart below to pick your size. The High Bust measurement should be taken above your breasts and the Full Bust measurement should be taken at the fullest part of your bustline. Take the waist measurement at the smallest part of your torso and the hip measurement at the widest part of your hips. Note that it is best to choose your size by your bust measurements (and add or remove from the side seams at the waist if needed).

If you're in our Artist, Beat Princess, or Bohemian Princess tiers, make sure to check out our first fit clinic from February to learn more about measuring yourself, choosing a size, and making fit adjustments.

Not sure which size range to choose? Read more about our [new 18-34 size range here!](#)

SIZES 2-20	2	4	6	8	10	12	14	16	18	20
High Bust	29 in 73.7 cm	31 in 78.7 cm	33 in 83.8 cm	35 in 88.9 cm	37 in 94 cm	39 in 99 cm	41 in 104.1 cm	43 in 109.2 cm	45 in 114.3 cm	47 in 119.4 cm
Bust A cup	30.5 in 77.5 cm	32.5 in 82.5 cm	34.5 in 87.6 cm	36.5 in 92.7 cm	38.5 in 97.8 cm	40.5 in 102.9 cm	42.5 in 108 cm	44.5 in 113 cm	46.5 in 118.1 cm	48.5 in 123.2 cm
Bust B/C cup	31 in 78.7 cm	33 in 83.8 cm	35 in 88.9 cm	37 in 94 cm	39 in 99 cm	41 in 104.1 cm	43 in 109.2 cm	45 in 114.3 cm	47 in 119.4 cm	49 in 124.5 cm
Bust D/DD cup	32 in 81.3 cm	34 in 86.4 cm	36 in 91.4 cm	38 in 96.5 cm	40 in 101.6 cm	42 in 106.7 cm	44 in 111.8 cm	46 in 116.8 cm	48 in 121.9 cm	50 in 127 cm
Bust F/G cup	33 in 83.8 cm	35 in 88.9 cm	37 in 94 cm	39 in 99 cm	41 in 104.1 cm	43 in 109.2 cm	45 in 114.3 cm	47 in 119.4 cm	49 in 124.5 cm	51 in 129.5 cm
Bust H cup	34 in 86.4 cm	36 in 91.4 cm	38 in 96.5 cm	40 in 101.6 cm	42 in 106.7 cm	44 in 111.8 cm	46 in 116.8 cm	48 in 121.9 cm	50 in 127 cm	52 in 132.1 cm
Waist	24 in 61 cm	26 in 66 cm	28 in 71.1 cm	30 in 76.2 cm	32 in 81.3 cm	34 in 86.4 cm	36 in 91.4 cm	38 in 96.5 cm	40 in 101.6 cm	42 in 106.7 cm
Hips	36 in 91.4 cm	38 in 96.5 cm	40 in 101.6 cm	42 in 106.7 cm	44 in 111.8 cm	46 in 116.8 cm	48 in 121.9 cm	50 in 127 cm	52 in 132.1 cm	54 in 137.2 cm

SIZES 18-34	18	20	22	24	26	28	30	32	34
High Bust	39.5 in 100.3 cm	41.5 in 105.4 cm	43.5 in 110.5 cm	45.5 in 115.6 cm	47.5 in 120.7 cm	49.5 in 125.7 cm	51.5 in 130.8 cm	53.5 in 135.9 cm	55.5 in 141 cm
Bust A cup	42.5 in 108 cm	44.5 in 113 cm	46.5 in 118.1 cm	48.5 in 123.2 cm	50.5 in 128.3 cm	52.5 in 133.4 cm	54.5 in 138.4 cm	56.5 in 143.5 cm	58.5 in 148.6 cm
Bust B/C cup	43 in 109.2 cm	45 in 114.3 cm	47 in 119.4 cm	49 in 124.5 cm	51 in 129.5 cm	53 in 134.6 cm	55 in 139.7 cm	57 in 144.8 cm	59 in 149.9 cm
Bust D/DD cup	44 in 111.8 cm	46 in 116.8 cm	48 in 121.9 cm	50 in 127 cm	52 in 132.1 cm	54 in 137.2 cm	56 in 142.2 cm	58 in 147.3 cm	60 in 152.4 cm
Bust F/G cup	45 in 114.3 cm	47 in 119.4 cm	49 in 124.5 cm	51 in 129.5 cm	53 in 134.6 cm	55 in 139.7 cm	57 in 144.8 cm	59 in 149.9 cm	61 in 154.9 cm
Bust H cup	46 in 116.8 cm	48 in 121.9 cm	50 in 127 cm	52 in 132.1 cm	54 in 137.2 cm	56 in 142.2 cm	58 in 147.3 cm	60 in 152.4 cm	62 in 157.5 cm
Waist	40 in 101.6 cm	42 in 106.7 cm	44 in 111.8 cm	46 in 116.8 cm	48 in 121.9 cm	50 in 127 cm	52 in 132.1 cm	54 in 137.2 cm	56 in 142.2 cm
Hips	48 in 121.9 cm	50 in 127 cm	52 in 132.1 cm	54 in 137.2 cm	56 in 142.2 cm	58 in 147.3 cm	60 in 152.4 cm	62 in 157.5 cm	64 in 162.6 cm

FABRIC NOTES

We recommend light- to medium-weight wovens: cotton sateen, broadcloth, poplin, seersucker, chambray, eyelet, and twill; and linen and linen blends. For a more glamorous and structured garment, silk matka, taffeta, dupioni, faille, and shantung may also be used.

MATERIALS & NOTIONS

- Fabric for the dress
- Tulle for flounce (optional)
- Thread to match
- Lightweight fusible interfacing (look for woven, weft, or tricot types)
- 1/4-in-wide fusible stay tape to stabilize the zipper opening (or cut a strip from a scrap of fusible interfacing yardage)
- 24-in nylon standard coil zipper
- Bias tape (optional)
- Piping or 1/4-in wide cording to make your own piping (optional)

RESOURCES

Here are some of the fabrics and supplies I used for the samples and in the video tutorial. There are lots of places to purchase fabric, so this is solely a guide you can use as a reference:

[Orange striped cotton](#)

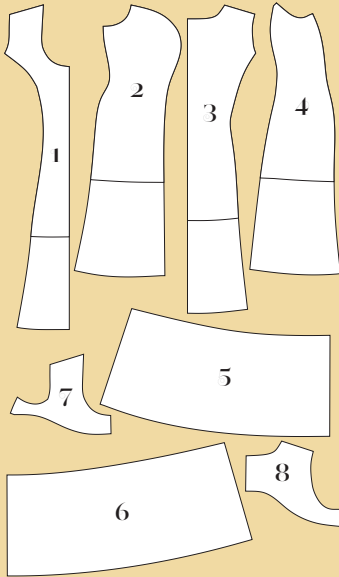
[Navy striped cotton](#)

[Green and black polka-dot linen](#)



PATTERN PIECES

1. **Dress Center Front**
Cut 1 fabric on fold
2. **Dress Side Front**
Cut 2 fabric
3. **Dress Center Back**
Cut 2 fabric
4. **Dress Side Back**
Cut 2 fabric
5. **Flounce Front**
Cut 1 fabric on fold, 2 tulle on fold (tulle is optional)
6. **Flounce Back**
Cut 1 fabric on fold, 2 tulle on fold (tulle is optional)
7. **Front Facing**
Cut 1 fabric on fold, 1 interfacing on fold
8. **Back Facing**
Cut 2 fabric, 2 interfacing



FIT NOTES

The Carousel Dress is a fitted dress with both princess seams and fisheye darts. It is designed to fit with between 2¼ and 3½ inches (in) (5.7 to 8.9 cm) of ease in the bust, 1 in (2.5 cm) of ease at the waist, and 1¾ to 2½ in (4.4 to 6.3 cm) of ease in the hips. This dress style requires close attention to fitting, so be sure to make a muslin. It is common to need to adjust the length or height of darts to fit your unique bust and torso shape. See the charts below for finished garment measurements.



FINISHED MEASUREMENTS

Sizes	2	4	6	8	10	12	14	16	18	20
Bust A	32.75 in 83.2 cm	34.75 in 88.3 cm	36.75 in 93.3 cm	38.75 in 98.4 cm	40.75 in 103.5 cm	42.75 in 108.6 cm	44.75 in 113.7 cm	46.75 in 118.7 cm	48.75 in 123.8 cm	50.75 in 128.9 cm
Bust B/C	33.25 in 84.5 cm	35.25 in 89.5 cm	37.25 in 94.6 cm	39.25 in 99.7 cm	41.25 in 104.8 cm	43.25 in 109.9 cm	45.25 in 114.9 cm	47.25 in 120 cm	49.25 in 125.1 cm	51.25 in 130.2 cm
Bust D/DD	34.25 in 87 cm	36.25 in 92.1 cm	38.25 in 97.2 cm	40.25 in 102.2 cm	42.25 in 107.3 cm	44.25 in 112.4 cm	46.25 in 117.5 cm	48.25 in 122.6 cm	50.25 in 127.6 cm	52.25 in 132.7 cm
Bust F/G	35.25 in 89.5 cm	37.25 in 94.6 cm	39.25 in 99.7 cm	41.25 in 104.8 cm	43.25 in 109.9 cm	45.25 in 114.9 cm	47.25 in 120 cm	49.25 in 125.1 cm	51.25 in 130.2 cm	53.25 in 135.3 cm
Bust H	36.25 in 92.1 cm	38.25 in 97.2 cm	40.25 in 102.2 cm	42.25 in 107.3 cm	44.25 in 112.4 cm	46.25 in 117.5 cm	48.25 in 122.6 cm	50.25 in 127.6 cm	52.25 in 132.7 cm	54.25 in 137.8 cm
Waist	25 in 63.5 cm	27 in 68.6 cm	29 in 73.7 cm	31 in 78.7 cm	33 in 83.8 cm	35 in 88.9 cm	37 in 94 cm	39 in 99.1 cm	41 in 104.1 cm	43 in 109.2 cm
Hips	37.75 in 95.9 cm	39.75 in 101 cm	41.75 in 106 cm	43.75 in 111.1 cm	45.75 in 116.2 cm	47.75 in 121.3 cm	49.75 in 126.4 cm	51.75 in 131.4 cm	53.75 in 136.5 cm	55.75 in 141.6 cm

Sizes	18	20	22	24	26	28	30	32	34
Bust A/B	47 in 119.4 cm	49 in 124.5 cm	51 in 129.5 cm	53 in 134.6 cm	55 in 139.7 cm	57 in 144.8 cm	59 in 149.9 cm	61 in 154.9 cm	63 in 160 cm
Bust C	47.5 in 120.7 cm	49.5 in 125.7 cm	51.5 in 130.8 cm	53.5 in 135.9 cm	55.5 in 141 cm	57.5 in 146.1 cm	59.5 in 151.1 cm	61.5 in 156.2 cm	63.5 in 161.3 cm
Bust D/DD	48.5 in 123.2 cm	50.5 in 128.3 cm	52.5 in 133.4 cm	54.5 in 138.4 cm	56.5 in 143.5 cm	58.5 in 148.6 cm	60.5 in 153.7 cm	62.5 in 158.8 cm	64.5 in 163.8 cm
Bust F/G	49.5 in 125.7 cm	51.5 in 130.8 cm	53.5 in 135.9 cm	55.5 in 141 cm	57.5 in 146.1 cm	59.5 in 151.1 cm	61.5 in 156.2 cm	63.5 in 161.3 cm	65.5 in 166.4 cm
Bust H	50.5 in 128.3 cm	52.5 in 133.4 cm	54.5 in 138.4 cm	56.5 in 143.5 cm	58.5 in 148.6 cm	60.5 in 153.7 cm	62.5 in 158.8 cm	64.5 in 163.8 cm	66.5 in 168.9 cm
Waist	41 in 104.1 cm	43 in 109.2 cm	45 in 114.3 cm	47 in 119.4 cm	49 in 124.5 cm	51 in 129.5 cm	53 in 134.6 cm	55 in 139.7 cm	57 in 144.8 cm
Hips	50.5 in 128.3 cm	52.5 in 133.4 cm	54.5 in 138.4 cm	56.5 in 143.5 cm	58.5 in 148.6 cm	60.5 in 153.7 cm	62.5 in 158.8 cm	64.5 in 163.8 cm	66.5 in 168.9 cm

For both size ranges, the skirt length from waist to hem is 28.5 in.

REQUIRED YARDAGE & CUTTING LAYOUTS

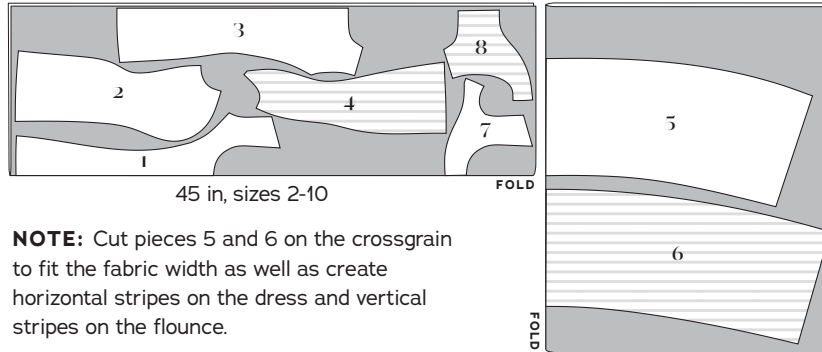
Note: All pattern pieces are shown in a “without nap” layout. You may need additional yardage for directional prints, stripes, plaids, and other prints that need to be matched across seamlines.

SIZES 2-20

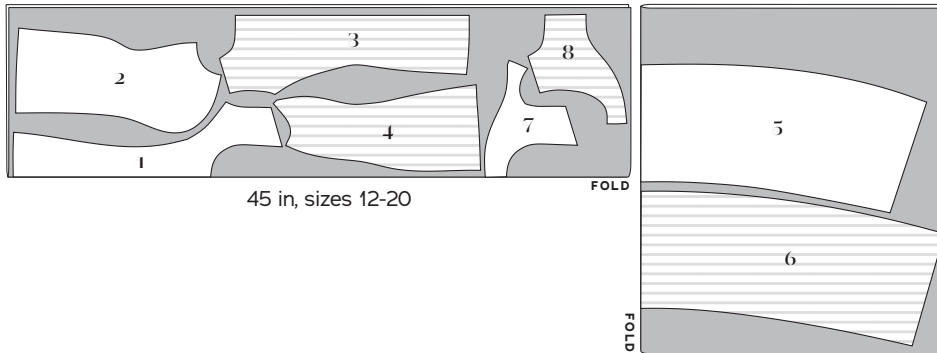
Carousel Dress with flounce

(1, 2, 3, 4, 5, 6, 7, 8)


	Sizes 2-10	Sizes 12-20
45 in	4 yds 3.7 m	4 ⁵ / ₈ yds 4.2 m
60 in	3 ¹ / ₂ yds 3.2 m	4 yds 3.7 m

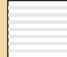


NOTE: Cut pieces 5 and 6 on the crossgrain to fit the fabric width as well as create horizontal stripes on the dress and vertical stripes on the flounce.



KEY TO LAYOUTS

 Right side of pattern piece

 Wrong side of pattern piece

Be sure to note whether the pieces are cut on a double or single layer of fabric. For a double layer, there will be a note indicating FOLD on the layout.

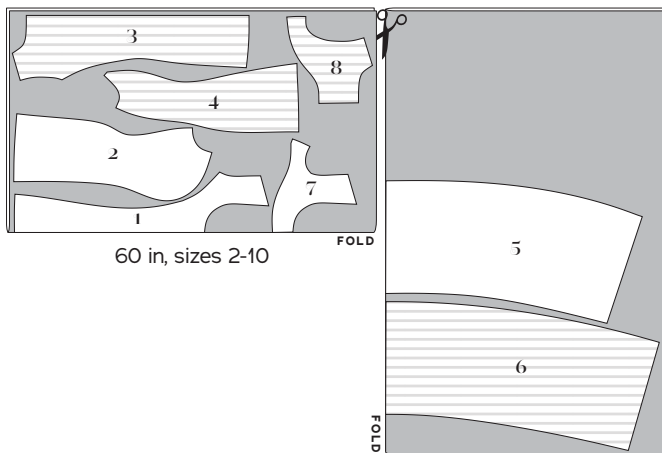
Optional Trimmings

If you choose to add piping and bows to your dress, you will need to make the following amounts and widths of bias binding:

For piping: 1 to 1¹/₂ yards (0.9 to 1.4 m) of 1¹/₂-in-wide (3.8 cm) bias strips. See page 8 for how to make and add piping to your dress.

For bows: 1¹/₂ to 2 yards (1.4 to 1.8 m) of 1¹/₄-in-wide (3.2 cm) bias strips. See page 8 to make the bias tubing you'll need to make the 6 bows for your dress.

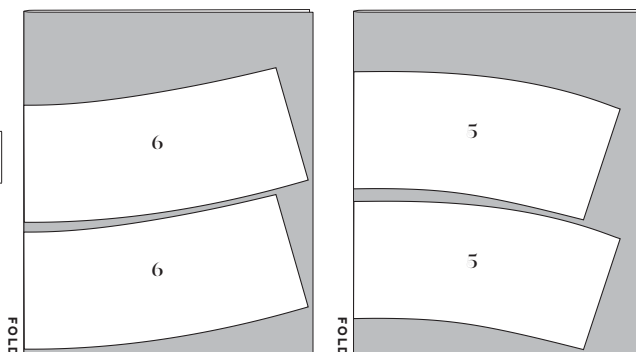
To add both piping and bows, you can cut the bias strips you need from 1¹/₈ yard (0.1 m) or 15-in square of fabric.



Tulle for flounce (optional) (5, 6)

	Sizes 2-10	Sizes 12-20
54 in	4 ¹ / ₈ yds 3.8 m	4 ¹ / ₂ yds 4.1 m

Cut crosswise to accommodate length of pattern pieces.



Interfacing (7, 8)

	Sizes 2-10	Sizes 12-20
60 in	3 ³ / ₈ yd .3 m	1 ¹ / ₂ yd .5 m

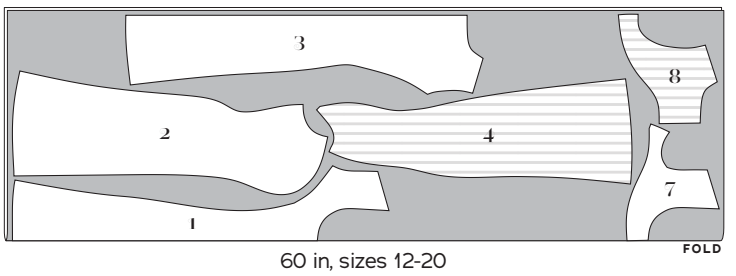
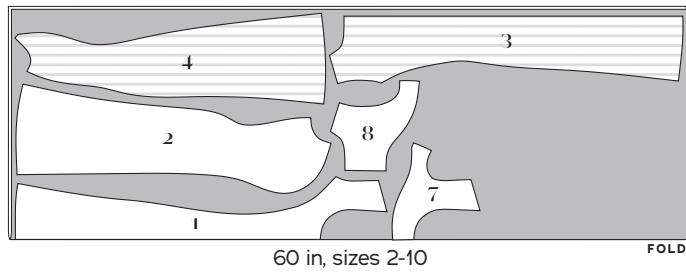
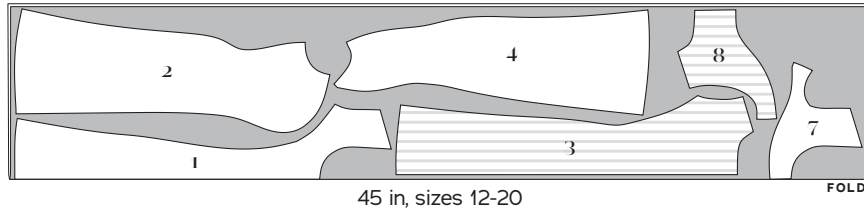
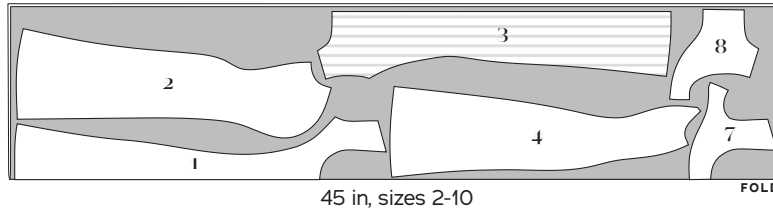


REQUIRED YARDAGE & CUTTING LAYOUTS (CONT'D)

Carousel Dress without flounce

(1, 2, 3, 4, 7, 8)



	Sizes 2-10	Sizes 12-20
45 in	2 ⁷ / ₈ yds 2.6 m	3 ¹ / ₄ yds 3 m
60 in	2 ¹ / ₂ yds 2.3 m	2 ⁵ / ₈ yds 2.4 m



SIZES 18-34

Note: All pattern pieces are shown in a “without nap” layout. You may need additional yardage for directional prints, stripes, plaids, and other prints that need to be matched across seamlines.

KEY TO LAYOUTS

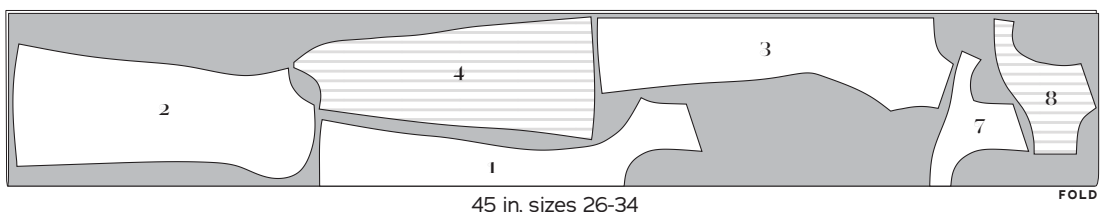
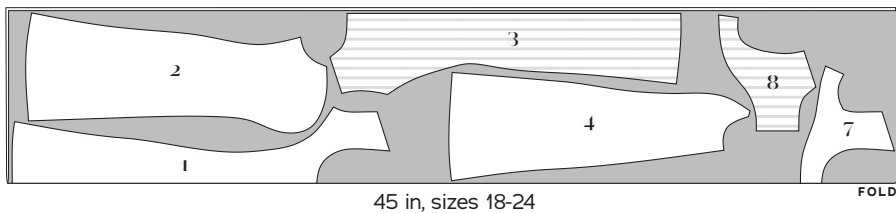
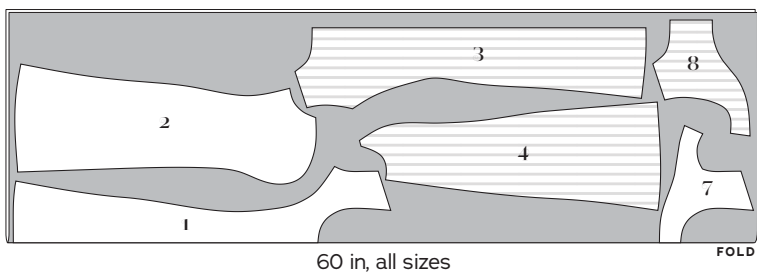
 Right side of pattern piece
 Wrong side of pattern piece

Be sure to note whether the pieces are cut on a double or single layer of fabric. For a double layer, there will be a note indicating FOLD on the layout.

Carousel Dress without flounce

(1, 2, 3, 4, 7, 8)

	Sizes 18-24	Sizes 26-34
45 in	3 ¹ / ₄ yds 3 m	4 yds 3.7 m
60 in	2 ³ / ₄ yds 2.5 m	2 ⁷ / ₈ yds 2.6 m

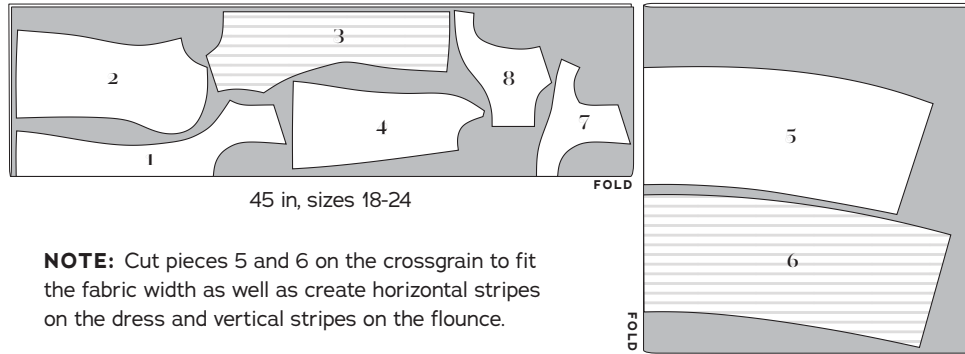


REQUIRED YARDAGE & CUTTING LAYOUTS

Carousel Dress with flounce

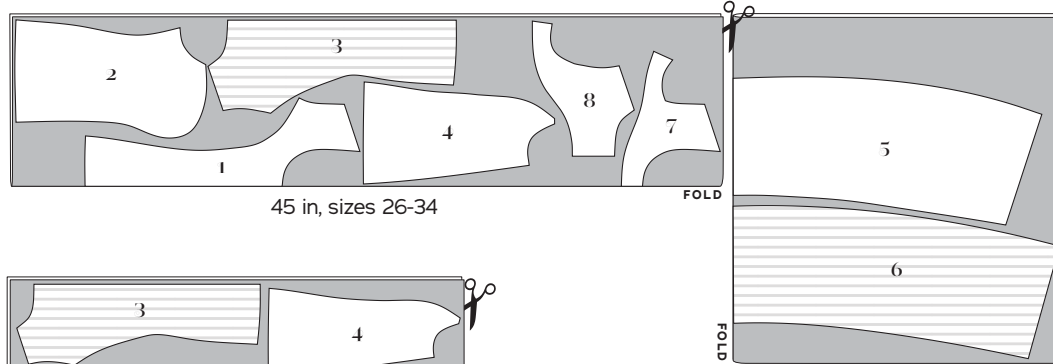
(1, 2, 3, 4, 5, 6, 7, 8)

	Sizes 18-24	Sizes 26-34
45 in	45 $\frac{5}{8}$ yds 4.2 m	5 $\frac{1}{8}$ yds 4.7 m
60 in	4 yds 3.7 m	4 $\frac{1}{2}$ yds 4.1 m

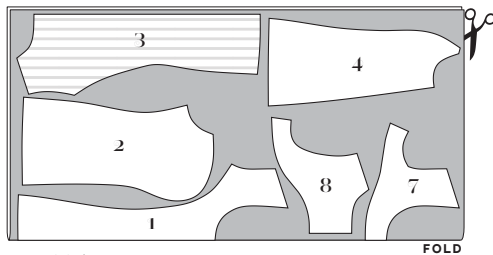


45 in, sizes 18-24

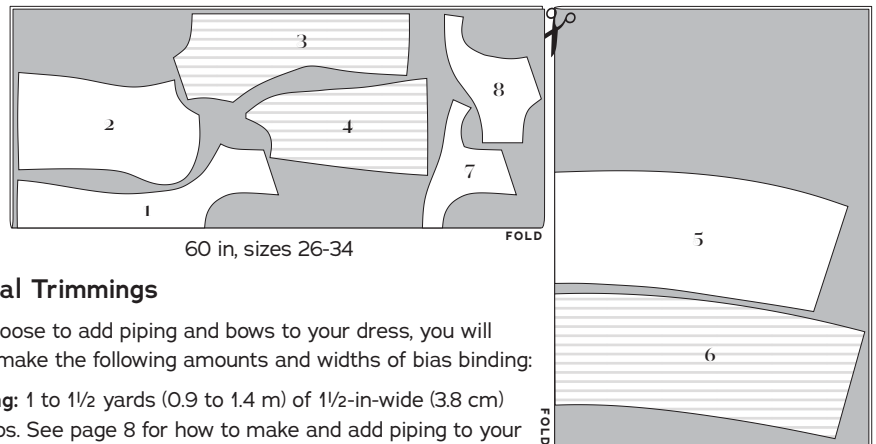
NOTE: Cut pieces 5 and 6 on the crossgrain to fit the fabric width as well as create horizontal stripes on the dress and vertical stripes on the flounce.



45 in, sizes 26-34



60 in,
sizes 18-24



60 in, sizes 26-34

Optional Trimmings

If you choose to add piping and bows to your dress, you will need to make the following amounts and widths of bias binding:

For piping: 1 to 1 $\frac{1}{2}$ yards (0.9 to 1.4 m) of 1 $\frac{1}{2}$ -in-wide (3.8 cm) bias strips. See page 8 for how to make and add piping to your dress.

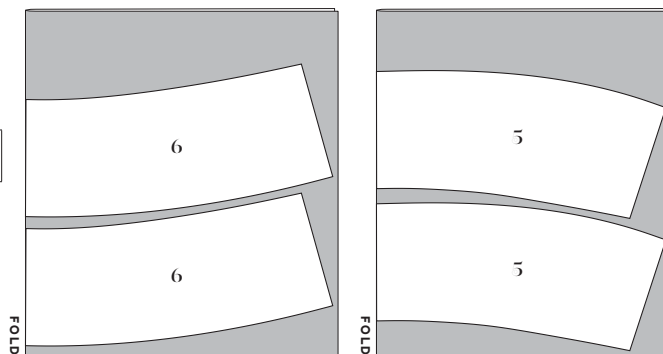
For bows: 1 $\frac{1}{2}$ to 2 yards (1.4 to 1.8 m) of 1 $\frac{1}{4}$ -in-wide (3.2 cm) bias strips. See page 8 to make the bias tubing you'll need to make the 6 bows for your dress.

To add both piping and bows, you can cut the bias strips you need from $\frac{1}{8}$ yard (0.1 m) or 15-in square of fabric.

Tulle for flounce (optional) (5, 6)

	Sizes 18-24	Sizes 26-34
54 in	4 $\frac{1}{2}$ yds 4.1 m	4 $\frac{3}{4}$ yds 4.3 m

Cut crosswise to accommodate length of pattern pieces.



Interfacing

(7, 8)

All sizes
60 in 1/2 yd .5 m



SEWING INSTRUCTIONS

BEFORE SEWING

Transferring marks: Use dressmaker's tracing paper and a tracing wheel to transfer all pattern markings to the wrong side (WS) of your fabric. Mark pattern notches by snipping into the seam allowance with the tip of your scissors.

Interfacing: Some of the pattern pieces need to be stabilized with fusible interfacing prior to sewing. Follow the interfacing cutting instructions on the pattern pieces. Apply fusible interfacing to the WS of the fabric, using a press cloth and steam. Do not rub your iron back and forth; lift it up and press it down for several seconds at a time until interfacing is fully adhered.

Seam Finishing: If finishing seams with a serger, serge the following seam allowances (without trimming the edges) before construction.

- All vertical seam allowances except princess seams
- Lower edge of front and back facings

NOTES

- 5/8-in (1.5 cm) seam allowances are included on all pattern pieces, except where otherwise noted.
- Press your stitching lines after every step, even when not specified in the instructions. You do not need to press basting or gathering stitches.

TIPS

- Some tulle fabric can be irritating when worn next to the skin, so enclosing the gathered flounce seam allowance with bias binding is recommended.
- If you don't have a serger, consider using a zigzag or overlock stitch on your sewing machine.
- If you find it difficult to see notches after serging, you may wish to mark them with chalk, thread tacks, or another marking tool.
- Watch the companion video for additional tips and step-by-step instructions.

MAKING PIPING

Piping can add a really fun element to your dress. Pre-made piping is widely available in many colors, but it is very easy to make your own matching piping using bias strips and cotton cord. Cut a 1½-in-wide (3.8 cm)

strip of bias fabric to create a piping with a 5/8-in seam allowance (this is called the flange of the piping).

Fold the strip in half lengthwise, WS together, sandwiching a length of ¼-in (6 mm) cording along the fold between the layers. Using a machine basting stitch, sew close to the cord on the right side (RS) of the fabric, keeping raw edges aligned. Using a piping/cording foot or zipper foot will allow you to sew close to the cording. Use the same foot to sew piping onto the dress.

MAKING BIAS TUBING

Bias tubing is simply bias strips of fabric sewn into tubes and then turned RS out. Cut strips about 1¼ in (3.2 cm) wide on the true bias. With RS together, fold strip in half and stitch ⅓ in (3 mm) from the fold. (It can be helpful to stitch with the fold to the right of your presser foot.) Trim seam allowance to ⅓ in. Use a loop turner or needle and thread to turn the tubing RS out. Steam but do not press.

SEW THE DRESS

Dress

1. Staystitch neckline: on Dress Center Front (1), using a ½-in (1.3 cm) seam allowance, staystitch the neckline from each shoulder to the center front (CF), backstitching at both ends to stabilize the neckline. Repeat staystitching on Dress Center Back (3).

2. Staystitch front and back princess seams: on dress center front, using a ½-in (1.3 cm) seam allowance, staystitch the princess seam from the top edge to the lower notch, then clip every ½ in between the top edge and the notch. Repeat for dress center backs.

3. Sew fisheye darts: on Dress Side Front (2), match dart legs, RS together, then stitch each end of the fisheye dart in two separate steps, working from the center of the dart to the dart point. Backstitch in the center but not at the points, leaving a few inches of thread at the points. Clip into the middle of the dart. Tie off the threads and trim. Press the darts toward CF.

4. Sew the front princess seams: pin dress side front to dress center front, RS together, spreading the clips so the curves match. Stitch with the clipped layer on top. Trim seam allowances to 3/8 in (1 cm), and then finish as one. Press seam allowances toward CF.

5. Sew the back princess seams: pin Dress Side Backs (4) to dress center backs, RS together, spreading the clips so the curves match. Stitch with the clipped layer on top. Trim seam allowances to $\frac{3}{8}$ in (1 cm), and then finish as one. Press seam allowances toward center back (CB).

6. Sew shoulder seams: with RS together, pin dress front to dress back at shoulders. Stitch and press seam allowances open.

Dress Facing

1. Sew facing shoulder seams: pin Front Facing (7) to Back Facing (8) at shoulder seams, RS together. Stitch and press seam allowances open.

2. Prepare to attach facing with clean finish

method: pin facing to dress around neckline, RS together. At zipper opening's top edge, working with dress back RS up, fold seam allowances as follows: on right half of opening (the underlap), fold both seam allowances to facing WS $\frac{1}{2}$ in (1.3 cm). The facing seam allowance is nested inside the outer fabric seam allowance. On opening's left half (the overlap), fold facing seam allowance to WS $\frac{7}{8}$ in (2.2 cm). Fold outer fabric seam allowance to WS $\frac{5}{8}$ in (1.5 cm). Seam allowances nest together, with facing seam allowance $\frac{1}{4}$ in (6 mm) wider. Folding seam allowances this way ensures facing is finished neatly around lapped zipper at neckline. NOTE: be sure to watch the tutorial video for visuals on this step.

3. Sew facing to dress: stitch around neckline, starting at one folded CB edge and ending at the other folded CB edge. Grade seam allowances so those on the dress are widest and those on the facing are narrower. Clip into curves every $\frac{1}{2}$ in (1.3 cm).

4. Understitch neckline: from RS, with facing opened out from dress and seam allowances underneath, stitch the facing $\frac{1}{8}$ in (3 mm) from the seamline, catching seam allowances in stitching. Start understitching at CB opening and end at opposite side. Turn facing to dress WS and press neckline edge, rolling seamline slightly so it is hidden inside the dress.

5. Finish armholes: turn facing to dress RS. Pin facing armholes to dress armholes, RS together, matching notches and shoulder seams. Stitch around each

armhole. Grade seam allowances so those on the dress are the widest. Clip into armhole curve every $\frac{1}{2}$ in (1.3 cm).

6. Turn facing to WS: turn the dress RS out, reaching through each front shoulder and pulling dress backs through.

7. Understitch armholes: understitch each armhole as for neckline, sewing the front and back of the armhole separately. Break stitching and restart on the other side of the armhole when the shoulder gets too narrow to continue. Press armhole edges, rolling seamline to WS.

8. Sew side seams: flip the facing out from the bodice at the side seams and pin dress front unit to dress back unit from hem edge to facing edge, RS together, matching notches. Stitch side seam, including facing, and press seam allowances open. Turn facing back to WS and press.

Zipper

1. Stabilize zipper opening: apply $\frac{1}{4}$ -in-wide (3.2 cm) strips of fusible interfacing to the CB opening's WS above zipper circles.

2. Sew seam below zipper opening: with RS together, pin dress backs together below zipper circles at CB. Stitch CB seam from hem allowance edge up to zipper circles and press seam allowances open.

3. Sew underlap half of zipper, leaving facing free: with dress RS out and facing turned up out of the way, on right half of opening (the underlap), press zipper opening seam allowance to WS $\frac{1}{2}$ in (1.3 cm). With zipper closed, pin zipper under pressed seam allowance, placing zipper teeth just left of fabric fold. The zipper stop should be positioned just below where the facing meets the dress at the neckline. Open zipper halfway. Using a zipper foot, stitch from top to bottom next to zipper teeth, just on the fold. As needle approaches zipper pull, stop stitching with needle in the fabric and close zipper; resume stitching to base. Backstitch.

4. Sew overlap half of zipper, leaving facing free: on left half of zipper opening (the overlap), press seam allowance under $\frac{5}{8}$ in (1.5 cm). With zipper closed, position overlap over zipper teeth so fabric fold just covers stitching on underlap. Pin overlap to zipper

tape. Open zipper and topstitch overlap $\frac{3}{8}$ in (1 cm) from fold, closing zipper when you reach the pull; finish stitching to base. Pivot the work and stitch across base of zipper opening.

Proceed to the next step for the Flounce Version. For a dress without the flounce, skip to the Dress Finishing section.

Flounce

1. Attach piping to dress (optional): pin the piping to the RS of the dress lower edge so the flange of the piping is positioned within the seam allowance and the corded part of the piping is just outside of the seam allowance, where it will show after the seam is sewn. Baste the piping in place close to the stitching on the flange, using a piping/cording foot or zipper foot.

2. Sew flounce side seams: pin Flounce Front (5) to Flounce Back (6) at side seams, RS together. Stitch and press seam allowances open.

3. Sew tulle flounce (optional): repeat the previous step for the optional tulle flounce, sewing both layers of tulle as one. Pin tulle to WS of fabric flounce at upper edge, matching side seams. Treat fabric and tulle flounce as one unit.

4. Gather flounce: using a 4- to 5-mm-long gathering stitch, sew two lines of stitching within the seam allowance between circle marks on flounce front and flounce back. Sew the first line of gathering stitches $\frac{1}{2}$ in (1.3 cm) from the raw edge and the second line $\frac{1}{4}$ in (6 mm) from the raw edge. Do not backstitch to lock your stitches. Pull up bobbin threads to gather. Gathers will be concentrated between circle marks.

5. Attach flounce to dress (without piping): pin the flounce to dress, RS together, matching side seams and circles. Stitch. Trim seam allowances and press toward dress.

6. Attach flounce to dress (with piping): pin the flounce to dress, RS together, with the piping sandwiched between and matching side seams and circles. Using a piping/cording foot or zipper foot, stitch from the WS so you can see the piping basting stitches, and make sure to stitch just to the left of the basting stitches. Check your piping from the RS to

make sure you have stitched as close as possible to the piping cord, otherwise you will see the stitching on the piping. If needed, you can go back and stitch closer. Trim seam allowances and press toward dress.

7. Enclose flounce seam allowances (optional, but recommended if using tulle): sandwich flounce seam allowances in bias tape, pinning WS of bias tape around flounce seam allowance, starting and ending at CB, tucking the starting end of the bias tape to WS to cover the join. Stitch close to folded edge of bias tape, catching both sides of bias tape in your stitching.

8. Add bias tubing bows (optional): cut and tie bias tubing into six bows and handstitch to the top of the flounce at the side seams and princess seams.

Dress Finishing

1. Attach facing to zipper: turn under seam allowances of facing at zipper opening and pin to zipper tape, tucking in upper ends of zipper tape and enclosing between facing and dress. Slipstitch in place by hand.

2. Secure facing at shoulder and side seams: from RS of dress, pin facing to dress at shoulder seams so that seams align. With dress RS out, machine-stitch in the ditch of shoulder seamlines. Repeat to secure facing at side seams.

3. Prepare the hem: try on the dress, wearing the shoes you plan to wear with it. Even the hem by measuring up from the floor and marking the desired hemline plus $\frac{5}{8}$ in (1.5 cm) hem allowance all the way around the hem edge.

4. Hem the dress (without tulle): trim the hem along the marked line and finish raw edge. Fold and press the edge under $\frac{5}{8}$ in (1.5 cm). Topstitch $\frac{1}{2}$ in (1.3 cm) from fold. Press hem flat.

5. Hem the dress (with tulle): trim only the fabric hem along the marked line and finish raw edge of fabric. Fold and press the fabric edge under $\frac{5}{8}$ in (1.5 cm). Topstitch fabric $\frac{1}{2}$ in (1.3 cm) from fold. Press hem flat. Trim the tulle $\frac{1}{4}$ in (6 mm) shorter than the finished fabric hem.

Enjoy your cute new Carousel Dress!

PATTERN PIECE LOCATION GUIDE

Here is a list to help you locate the pattern pieces on the letter-size tiled pages and A0 pattern sheets.
The tiled pieces and A0 sheets are included as separate pdf files as part of this digital pattern.

SIZES 2-20

PC#	Piece Name	Tiled	A0
1	Dress Center Front, A-C Cup	4-5, 9-10, 15, 20, 24-25	1-2
1	Dress Center Front, D/DD Cup	28-29, 33, 36, 39, 42-43	1-2
1	Dress Center Front, F/G Cup	46-47, 51, 54, 57, 60-61	1-2
1	Dress Center Front, H Cup	64-65, 69, 72, 75, 78-79	1-2
2	Dress Side Front, A Cup	1-3, 6-8, 11-12, 16-17, 21-22	3
2	Dress Side Front, B/C Cup	3-4, 8-9, 13-14, 17-19, 22-24	5
2	Dress Side Front, D/DD Cup	28, 31-38, 40-42	4
2	Dress Side Front, F/G Cup	46, 49-56, 58-60	5
2	Dress Side Front H Cup	64, 67-74, 76-78	4
3	Dress Center Back	81-82, 84-85, 93-94, 102-103, 111-112	1-2
4	Dress Side Back	81-82, 85-87, 94-96, 103-105, 112-114	3
5	Flounce Front	105-110, 114-119	6
6	Flounce Back	87-92, 96-101	7
7	Front Facing, A-C Cup	2-4	6
7	Front Facing, D/DD Cup	26-27, 30	6
7	Front Facing, F/G Cup	44-45, 48	6
7	Front Facing, H Cup	62-63, 66	7
8	Back Facing	81-83, 86-87	7

Cup Size Printing Guide, sizes 2-20

A Cup: 1-17, 20-22, 24-25, 81-119

B/C Cup: 2-5, 8-10, 13-15, 17-19, 20, 22-25, 80-119

D/DD Cup: 26-43, 80-119

F/G Cup: 44-61, 80-119

H Cup: 62-119

SIZES 18-34

PC#	Piece Name	Tiled	A0
1	Dress Center Front, A-C Cup	4-5, 10-11, 17, 22-23, 28-29	1-2
1	Dress Center Front, D/DD Cup	32-33, 36-37, 41, 44-45, 48-49	1-2
1	Dress Center Front, F/G Cup	52-53, 56-57, 61, 64-65, 68-69	1-2
1	Dress Center Front, H Cup	72-73, 76-77, 81, 84-85, 88-89	1-2
2	Dress Side Front, A/B Cup	6-8, 12-14, 18-20, 24-25	4
2	Dress Side Front, C Cup	8-10, 14-16, 20-22, 26-28	5
2	Dress Side Front, D/DD Cup	34-36, 38-40, 42-44, 46-48	5
2	Dress Side Front, F/G Cup	54-56, 58-60, 62-64, 66-68	4
2	Dress Side Front, H Cup	74-76, 78-80, 82-84, 86-88	3
3	Dress Center Back	90-91, 95-96, 105-106, 115-116, 125-126	1-2
4	Dress Side Back	96-98, 106-108, 116-118, 126-128	3
5	Flounce Front	119-124, 129-134	6
6	Flounce Back	98-104, 108-114	7
7	Front Facing, A-C Cup	1-4, 8-9	7
7	Front Facing, D/DD Cup	30-31, 34-35	7
7	Front Facing, F/G Cup	50-51, 54-55	7
7	Front Facing, H Cup	70-71, 74-75	6
8	Back Facing	92-94, 98-99	6

Cup Size Printing Guides, sizes 18-34

A/B Cup: 1-14, 17-20, 22-25, 90-134

C Cup: 1-5, 8-11, 14-17, 20-23, 26-29, 90-134

D/DD Cup: 30-49, 90-134

F/G Cup: 50-69, 90-134

H Cup: 70-134

TILING MAPS

SIZES
2-20

A-C CUP					D/DD CUP				CUP F/G			
PAGE 1	PAGE 2	PAGE 3	PAGE 4	PAGE 5	PAGE 26	PAGE 27	PAGE 28	PAGE 29	PAGE 44	PAGE 45	PAGE 46	PAGE 47
PAGE 6	PAGE 7	PAGE 8	PAGE 9	PAGE 10	PAGE 30	PAGE 31	PAGE 32	PAGE 33	PAGE 48	PAGE 49	PAGE 50	PAGE 51
PAGE 11	PAGE 12	PAGE 13	PAGE 14	PAGE 15	PAGE 34	PAGE 35	PAGE 36		PAGE 52	PAGE 53	PAGE 54	
PAGE 16	PAGE 17	PAGE 18	PAGE 19	PAGE 20	PAGE 37	PAGE 38	PAGE 39		PAGE 55	PAGE 56	PAGE 57	
PAGE 21	PAGE 22	PAGE 23	PAGE 24	PAGE 25	PAGE 40	PAGE 41	PAGE 42	PAGE 43	PAGE 58	PAGE 59	PAGE 60	PAGE 61
H CUP					ALL CUPS							

PAGE 62	PAGE 63	PAGE 64	PAGE 65	PAGE 80	PAGE 81	PAGE 82	PAGE 83
PAGE 66	PAGE 67	PAGE 68	PAGE 69	PAGE 84	PAGE 85	PAGE 86	PAGE 87
PAGE 70	PAGE 71	PAGE 72		PAGE 88	PAGE 89	PAGE 90	PAGE 91
PAGE 73	PAGE 74	PAGE 75		PAGE 92	PAGE 93	PAGE 94	PAGE 95
PAGE 76	PAGE 77	PAGE 78	PAGE 79	PAGE 96	PAGE 97	PAGE 98	PAGE 99
				PAGE 100	PAGE 101	PAGE 102	PAGE 103
				PAGE 104	PAGE 105	PAGE 106	PAGE 107
				PAGE 108	PAGE 109	PAGE 110	PAGE 111
				PAGE 112	PAGE 113	PAGE 114	PAGE 115
				PAGE 116	PAGE 117	PAGE 118	PAGE 119

SIZES
18-34

A-C CUP					D/DD CUP				CUP F/G			
PAGE 1	PAGE 2	PAGE 3	PAGE 4	PAGE 5	PAGE 30	PAGE 31	PAGE 32	PAGE 33	PAGE 50	PAGE 51	PAGE 52	PAGE 53
PAGE 6	PAGE 7	PAGE 8	PAGE 9	PAGE 10	PAGE 34	PAGE 35	PAGE 36	PAGE 37	PAGE 54	PAGE 55	PAGE 56	PAGE 57
PAGE 11	PAGE 12	PAGE 13	PAGE 14	PAGE 15	PAGE 38	PAGE 39	PAGE 40	PAGE 41	PAGE 58	PAGE 59	PAGE 60	PAGE 61
PAGE 16	PAGE 17	PAGE 18	PAGE 19	PAGE 20	PAGE 42	PAGE 43	PAGE 44	PAGE 45	PAGE 62	PAGE 63	PAGE 64	PAGE 65
PAGE 21	PAGE 22	PAGE 23	PAGE 24	PAGE 25	PAGE 46	PAGE 47	PAGE 48	PAGE 49	PAGE 66	PAGE 67	PAGE 68	PAGE 69
H CUP					ALL CUPS							

PAGE 70	PAGE 71	PAGE 72	PAGE 73	PAGE 90	PAGE 91	PAGE 92	PAGE 93
PAGE 74	PAGE 75	PAGE 76	PAGE 77	PAGE 94	PAGE 95	PAGE 96	PAGE 97
PAGE 78	PAGE 79	PAGE 80	PAGE 81	PAGE 98	PAGE 99	PAGE 100	PAGE 101
PAGE 82	PAGE 83	PAGE 84	PAGE 85	PAGE 102	PAGE 103	PAGE 104	PAGE 105
PAGE 86	PAGE 87	PAGE 88	PAGE 89	PAGE 106	PAGE 107	PAGE 108	PAGE 109
				PAGE 110	PAGE 111	PAGE 112	PAGE 113
				PAGE 114	PAGE 115	PAGE 116	PAGE 117
				PAGE 118	PAGE 119	PAGE 120	PAGE 121
				PAGE 122	PAGE 123	PAGE 124	PAGE 125
				PAGE 126	PAGE 127	PAGE 128	PAGE 129
				PAGE 130	PAGE 131	PAGE 132	PAGE 133
				PAGE 134			

HOW TO USE THIS PATTERN

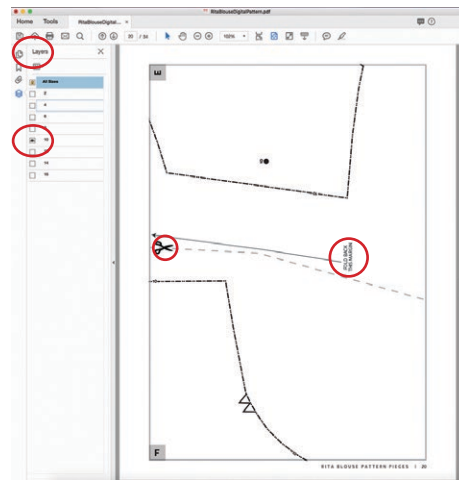
The pattern pieces are tiled so you can print them on Letter (8½" x 11") or A4 size paper. You can also send the A0 pattern sheet PDF to a local or online printer (like www.pdfplotting.com) to print on large sheets (36" x 48" for U.S. or A0 for international).

This pattern includes size layers. To get the best results, open either the Tiled or A0 pattern pieces PDF in Acrobat Reader.

Open the Layers Palette (View> Show/Hide>Navigation Panes>Layers) and hide all of the layer(s) except for the ones you want to print by clicking

on the eye icon.

The All Sizes layer has general pattern information and will always print.



WORKING WITH THE TILED PIECES

Go to File>Print and change the page range to the pages you need for the pieces you've chosen (see Pattern Pieces Printing Index). Make sure the Page Sizing settings to 100% or Actual Size. Test this after printing by measuring the 1" test box on the first page of the bodice pattern pieces.

Cut apart any pattern pieces that share a page by cutting on the gray long dashed lines. Then fold back the page margins on each page as directed.

Tape the pages together, butting up the folded page edges with the gray margin lines, matching up the letters in gray boxes.

MORE FROM GERTIE

On Instagram: Stay in the loop and get inspired.

On YouTube: Learn beginner and advanced sewing skills and techniques through my tutorials, watch episodes of my Gertie's World series, and join regular live streams.

On Patreon: Access monthly patterns and tutorial videos.

At CharmPatterns.com: Shop my sewing patterns and accessories.

