



# Judy Vest

A PATREON EXCLUSIVE PATTERN

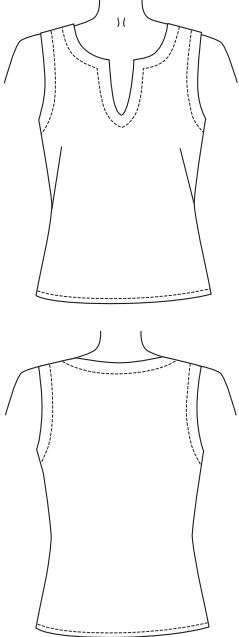


**MAKE THIS SKIRT!**  
 Check out our free  
 Double Circle Skirt  
 pattern available  
 from our shop at  
[CharmPatterns.com](http://CharmPatterns.com).



Inspired by Judy's engagement outfit in *White Christmas*, this sweet vest pairs perfectly with vintage-style tops and skirts! It's a great winter layering piece that will take you through seasonal transitions while adding cozy winter flair. Want to live out your *White Christmas* fantasy? We paired it with the Charm Double Circle Skirt and Barbie Top Turtleneck Expansion for a delightfully festive look!

xoxo, *Gertie*



## SIZE CHART

The Judy Vest is sized in women's US 2–20 and 18–34, A–H cup sizes. Please use the charts below to pick your size. The High Bust measurement should be taken above your breasts and the Full Bust measurement should be taken at the fullest part of your bustline. Take the waist measurement at the smallest part of your waist and the hip measurement at the widest part of your hips. Note that it is best to choose your size by your bust measurements (and add or remove from the side seams at the waist if needed). Not sure which size range to choose? Read more about our [new 18–34 size range here!](#)

| SIZES<br>2-20    | 2                  | 4                  | 6                  | 8                  | 10                 | 12                  | 14                | 16                | 18                  | 20                  |
|------------------|--------------------|--------------------|--------------------|--------------------|--------------------|---------------------|-------------------|-------------------|---------------------|---------------------|
| High Bust        | 29 in<br>73.7 cm   | 31 in<br>78.7 cm   | 33 in<br>83.8 cm   | 35 in<br>88.9 cm   | 37 in<br>94 cm     | 39 in<br>99.1 cm    | 41 in<br>104.1 cm | 43 in<br>109.2 cm | 45 in<br>114.3 cm   | 47 in<br>119.4 cm   |
| Bust<br>A cup    | 30.5 in<br>77.5 cm | 32.5 in<br>82.6 cm | 34.5 in<br>87.6 cm | 36.5 in<br>92.7 cm | 38.5 in<br>97.8 cm | 40.5 in<br>102.9 cm | 42.5 in<br>108 cm | 44.5 in<br>113 cm | 46.5 in<br>118.1 cm | 48.5 in<br>123.2 cm |
| Bust<br>B/C cup  | 31 in<br>78.7 cm   | 33 in<br>83.8 cm   | 35 in<br>88.9 cm   | 37 in<br>94 cm     | 39 in<br>99.1 cm   | 41 in<br>104.1 cm   | 43 in<br>109.2 cm | 45 in<br>114.3 cm | 47 in<br>119.4 cm   | 49 in<br>124.5 cm   |
| Bust<br>D/DD cup | 32 in<br>81.3 cm   | 34 in<br>86.4 cm   | 36 in<br>91.4 cm   | 38 in<br>96.5 cm   | 40 in<br>101.6 cm  | 42 in<br>106.7 cm   | 44 in<br>111.8 cm | 46 in<br>116.8 cm | 48 in<br>121.9 cm   | 50 in<br>127 cm     |
| Bust<br>F/G cup  | 33 in<br>83.8 cm   | 35 in<br>88.9 cm   | 37 in<br>94 cm     | 39 in<br>99.1 cm   | 41 in<br>104.1 cm  | 43 in<br>109.2 cm   | 45 in<br>114.3 cm | 47 in<br>119.4 cm | 49 in<br>124.5 cm   | 51 in<br>129.5 cm   |
| Bust<br>H cup    | 34 in<br>86.4 cm   | 36 in<br>91.4 cm   | 38 in<br>96.5 cm   | 40 in<br>101.6 cm  | 42 in<br>106.7 cm  | 44 in<br>111.8 cm   | 46 in<br>116.8 cm | 48 in<br>121.9 cm | 50 in<br>127 cm     | 52 in<br>132.1 cm   |
| Waist            | 24 in<br>61 cm     | 26 in<br>66 cm     | 28 in<br>71.1 cm   | 30 in<br>76.2 cm   | 32 in<br>81.3 cm   | 34 in<br>86.4 cm    | 36 in<br>91.4 cm  | 38 in<br>96.5 cm  | 40 in<br>101.6 cm   | 42 in<br>106.7 cm   |
| Hips             | 36 in<br>91.4 cm   | 38 in<br>96.5 cm   | 40 in<br>101.6 cm  | 42 in<br>106.7 cm  | 44 in<br>111.8 cm  | 46 in<br>116.8 cm   | 48 in<br>121.9 cm | 50 in<br>127 cm   | 52 in<br>132.1 cm   | 54 in<br>137.2 cm   |

| SIZES<br>18-34   | 18                  | 20                  | 22                  | 24                  | 26                  | 28                  | 30                  | 32                  | 34                  |
|------------------|---------------------|---------------------|---------------------|---------------------|---------------------|---------------------|---------------------|---------------------|---------------------|
| High Bust        | 39.5 in<br>100.3 cm | 41.5 in<br>105.4 cm | 43.5 in<br>110.5 cm | 45.5 in<br>115.6 cm | 47.5 in<br>120.7 cm | 49.5 in<br>125.7 cm | 51.5 in<br>130.8 cm | 53.5 in<br>135.9 cm | 55.5 in<br>141 cm   |
| Bust<br>A cup    | 42.5 in<br>108 cm   | 44.5 in<br>113 cm   | 46.5 in<br>118.1 cm | 48.5 in<br>123.2 cm | 50.5 in<br>128.3 cm | 52.5 in<br>133.4 cm | 54.5 in<br>138.4 cm | 56.5 in<br>143.5 cm | 58.5 in<br>148.6 cm |
| Bust<br>B/C cup  | 43 in<br>109.2 cm   | 45 in<br>114.3 cm   | 47 in<br>119.4 cm   | 49 in<br>124.5 cm   | 51 in<br>129.5 cm   | 53 in<br>134.6 cm   | 55 in<br>139.7 cm   | 57 in<br>144.8 cm   | 59 in<br>149.9 cm   |
| Bust<br>D/DD cup | 44 in<br>111.8 cm   | 46 in<br>116.8 cm   | 48 in<br>121.9 cm   | 50 in<br>127 cm     | 52 in<br>132.1 cm   | 54 in<br>137.2 cm   | 56 in<br>142.2 cm   | 58 in<br>147.3 cm   | 60 in<br>152.4 cm   |
| Bust<br>F/G cup  | 45 in<br>114.3 cm   | 47 in<br>119.4 cm   | 49 in<br>124.5 cm   | 51 in<br>129.5 cm   | 53 in<br>134.6 cm   | 55 in<br>139.7 cm   | 57 in<br>144.8 cm   | 59 in<br>149.9 cm   | 61 in<br>154.9 cm   |
| Bust<br>H cup    | 46 in<br>116.8 cm   | 48 in<br>121.9 cm   | 50 in<br>127 cm     | 52 in<br>132.1 cm   | 54 in<br>137.2 cm   | 56 in<br>142.2 cm   | 58 in<br>147.3 cm   | 60 in<br>152.4 cm   | 62 in<br>157.5 cm   |
| Waist            | 40 in<br>101.6 cm   | 42 in<br>106.7 cm   | 44 in<br>111.8 cm   | 46 in<br>116.8 cm   | 48 in<br>121.9 cm   | 50 in<br>127 cm     | 52 in<br>132.1 cm   | 54 in<br>137.2 cm   | 56 in<br>142.2 cm   |
| Hips             | 48 in<br>121.9 cm   | 50 in<br>127 cm     | 52 in<br>132.1 cm   | 54 in<br>137.2 cm   | 56 in<br>142.2 cm   | 58 in<br>147.3 cm   | 60 in<br>152.4 cm   | 62 in<br>157.5 cm   | 64 in<br>162.6 cm   |

## FINISHED MEASUREMENTS & FIT NOTES

The Judy Vest is designed to fit with 3/4–3½ inches (in) of negative ease in the bust and 2–3 in of positive ease in the waist. You can consult the finished measurements charts below if you need more information to help you pick a size. The cup sizing on this design is a little different than our other patterns. Because knits have a very forgiving fit, we have grouped more cup sizes together than usual: A–C, D–F, and G–H. To figure out which size you should make, first measure your high bust (under your armpits and above your breasts) and your full bust (the fullest part of your bust). Make sure to hold the measuring tape snug and parallel to the ground. Compare your body measurements to the size charts above. First,

## MATERIALS & NOTIONS

- Fabric for vest
- Thread to match your fabric
- Interfacing for facings (look for lightweight woven, weft, or tricot types)

## RESOURCES

Here is the fabric I used for the sample and in the video tutorial. There are lots of places to purchase fabric, so this is solely a guide you can use as a reference:

[Black Boiled Wool Knit](#)

## FABRIC NOTES

This vest was designed for stable knit fabrics like ponte, double knit, boiled wool knit, and interlock. Look for knits with 15 to 25% stretch in the widthwise grain and very little stretch in the lengthwise grain. If you find a fabric that stretches in the lengthwise direction, you may modify the cutting layouts and orient the pattern pieces so that the stretch goes horizontally around the body.



find your high bust measurement on the chart to determine your top size and then scan down the cup sizes in that column to find the cup size that matches your full bust measurement. For instance, a 37-in high bust makes you a size 10 top, and a 39-in full bust puts you in an A-C cup.

**SIZES**

| 2-20        | 2                  | 4                  | 6                  | 8                  | 10                  | 12                  | 14                | 16                  | 18                  | 20                  |
|-------------|--------------------|--------------------|--------------------|--------------------|---------------------|---------------------|-------------------|---------------------|---------------------|---------------------|
| Bust A-C    | 30.5 in<br>77.5 cm | 32.5 in<br>82.6 cm | 34.5 in<br>87.6 cm | 36.5 in<br>92.7 cm | 38.5 in<br>97.8 cm  | 40.5 in<br>102.9 cm | 42.5 in<br>108 cm | 44.5 in<br>113 cm   | 46.5 in<br>118.1 cm | 48.5 in<br>123.2 cm |
| Bust D-F    | 31 in<br>78.7 cm   | 33 in<br>83.8 cm   | 35 in<br>88.9 cm   | 37 in<br>94 cm     | 39 in<br>99.1 cm    | 41 in<br>104.1 cm   | 43 in<br>109.2 cm | 45 in<br>114.3 cm   | 47 in<br>119.4 cm   | 49 in<br>124.5 cm   |
| Bust G-H    | 32.5 in<br>82.6 cm | 34.5 in<br>87.6 cm | 36.5 in<br>92.7 cm | 38.5 in<br>97.8 cm | 40.5 in<br>102.9 cm | 42.5 in<br>108 cm   | 44.5 in<br>113 cm | 46.5 in<br>118.1 cm | 48.5 in<br>123.2 cm | 50.5 in<br>128.3 cm |
| Waist       | 27 in<br>68.6 cm   | 29 in<br>73.7 cm   | 31 in<br>78.7 cm   | 33 in<br>83.8 cm   | 35 in<br>88.9 cm    | 37 in<br>94 cm      | 39 in<br>99.1 cm  | 41 in<br>104.1 cm   | 43 in<br>109.2 cm   | 45 in<br>114.3 cm   |
| Hem Opening | 33 in<br>83.8 cm   | 35 in<br>88.9 cm   | 37 in<br>94 cm     | 39 in<br>99.1 cm   | 41 in<br>104.1 cm   | 43 in<br>109.2 cm   | 45 in<br>114.3 cm | 47 in<br>119.4 cm   | 49 in<br>124.5 cm   | 51 in<br>129.5 cm   |

**SIZES**

| 18-34       | 18                   | 20                   | 22                   | 24                   | 26                   | 28                   | 30                   | 32                   | 34                   |
|-------------|----------------------|----------------------|----------------------|----------------------|----------------------|----------------------|----------------------|----------------------|----------------------|
| Bust A-C    | 41.75 in<br>106 cm   | 43.75 in<br>111.1 cm | 45.75 in<br>116.2 cm | 47.75 in<br>121.3 cm | 49.75 in<br>126.4 cm | 51.75 in<br>131.4 cm | 53.75 in<br>136.5 cm | 55.75 in<br>141.6 cm | 57.75 in<br>146.7 cm |
| Bust D-F    | 42.75 in<br>108.6 cm | 44.75 in<br>113.7 cm | 46.75 in<br>118.7 cm | 48.75 in<br>123.8 cm | 50.75 in<br>128.9 cm | 52.75 in<br>134 cm   | 54.75 in<br>139.1 cm | 56.75 in<br>144.1 cm | 58.75 in<br>149.2 cm |
| Bust G-H    | 43.75 in<br>111.1 cm | 45.75 in<br>116.2 cm | 47.75 in<br>121.3 cm | 49.75 in<br>126.4 cm | 51.75 in<br>131.4 cm | 53.75 in<br>136.5 cm | 55.75 in<br>141.6 cm | 57.75 in<br>146.7 cm | 59.75 in<br>151.8 cm |
| Waist       | 42.25 in<br>107.3 cm | 44.25 in<br>112.4 cm | 46.25 in<br>117.5 cm | 48.25 in<br>122.6 cm | 50.25 in<br>127.6 cm | 52.25 in<br>132.7 cm | 54.25 in<br>137.8 cm | 56.25 in<br>142.9 cm | 58.25 in<br>148 cm   |
| Hem Opening | 46 in<br>116.8 cm    | 48 in<br>121.9 cm    | 50 in<br>127 cm      | 52 in<br>132.1 cm    | 54 in<br>137.2 cm    | 56 in<br>142.2 cm    | 58 in<br>147.3 cm    | 60 in<br>152.4 cm    | 62 in<br>157.5 cm    |

**REQUIRED YARDAGE & CUTTING LAYOUTS**

**SIZES 2-20**

**Notes:**

- All pattern pieces are shown in a “without nap” layout. You may need additional yardage for directional prints, stripes, plaids, and other prints that need to be matched across seamlines.
- Be sure to note whether the pieces are cut on a double or single layer of fabric. For a double layer, there will be a note indicating FOLD on the layout.

**Vest (1, 2, 3, 4, 5, 6)**

|       | Sizes 2-10      | Sizes 12-20     |
|-------|-----------------|-----------------|
| 45 in | 1¼ yds<br>1.1 m | 1¾ yds<br>1.6 m |
| 60 in | 1 yd<br>0.9 m   | 1⅛ yds<br>1 m   |

45 in, sizes 2-10

60 in, sizes 2-10

60 in, sizes 12-20

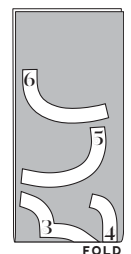
**FOLD**

\*Cut only one layer of fabric for this piece

**Interfacing**

(3, 4, 5, 6)

| All sizes |               |
|-----------|---------------|
| 60 in     | ½ yd<br>0.5 m |



**PATTERN PIECES**

**1. Vest Front**

Cut 1 fabric on fold

**2. Vest Back**

Cut 1 fabric on fold

**3. Front Neck Facing**

Cut 1 fabric on fold, 1 interfacing on fold

**4. Back Neck Facing**

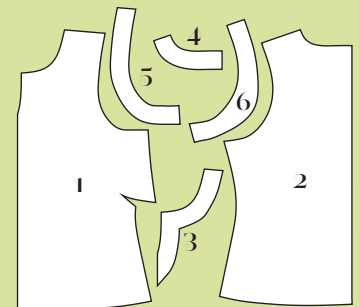
Cut 1 fabric on fold, 1 interfacing on fold

**5. Front Armhole Facing**

Cut 2 fabric, 2 interfacing

**6. Back Armhole Facing**

Cut 2 fabric, 2 interfacing



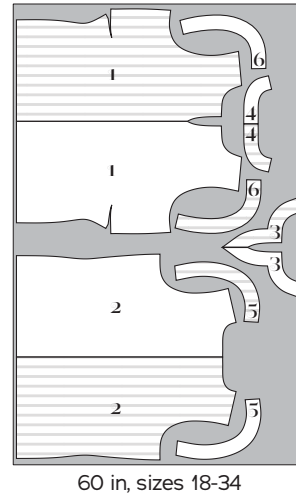
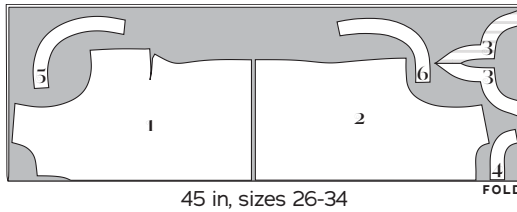
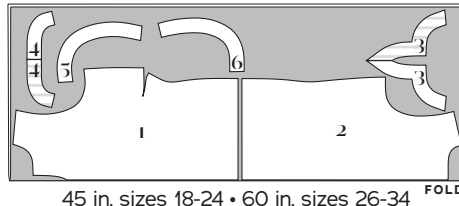
**KEY TO CUTTING LAYOUTS**

- Right side of pattern piece
- Wrong side of pattern piece

# REQUIRED YARDAGE & CUTTING LAYOUTS SIZES 18-34

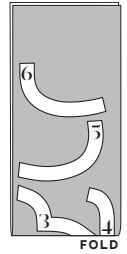
Vest (1, 2, 3, 4, 5, 6)

|       | Sizes<br>18-24  | Sizes<br>26-34  |
|-------|-----------------|-----------------|
| 45 in | 1¾ yds<br>1.6 m | 2 yds<br>1.8 m  |
| 60 in | 1¼ yds<br>1.1 m | 1⅞ yds<br>1.7 m |



Interfacing (3, 4, 5, 6)

| All sizes |               |
|-----------|---------------|
| 60 in     | ½ yd<br>0.5 m |



## SEWING INSTRUCTIONS

### BEFORE SEWING

**Transferring marks:** Use dressmaker's tracing paper and a tracing wheel to transfer all pattern markings to the wrong side (WS) of your fabric. Mark pattern notches by snipping into the seam allowance with the tip of your scissors.

**Interfacing:** The facings need to be stabilized with fusible interfacing before sewing. Follow the interfacing cutting instructions on the pattern pieces. Apply fusible interfacing to the WS of the fabric, using a press cloth and steam. Do not move your iron back and forth; lift it up and press down for several seconds at a time until the interfacing is fully adhered.

### NOTES

- 5/8-inch (in) (1.5 cm) seam allowances are included on all pattern pieces, except where otherwise noted.
- Use a ballpoint or jersey needle to avoid skipped stitches.
- Use a narrow zigzag stitch on seams and hems to provide some stretch (about 1.5 mm wide by 2.5 mm long).
- We did not include any seam finishing, since boiled wool and other knits don't tend to fray. You may serge or zigzag your raw edges, if desired.

## SEWING THE VEST

### Construct Vest

**1. Staystitch neckline on Vest Front (1) and Vest Back (2):** using a 1/2-in (1.3 cm) seam allowance, stitch directionally from the shoulder to the center front/back, backstitching at center front/back. Turn piece over and repeat from opposite shoulder, overlapping the stitching at center front/back.

**2. Sew French darts in vest front:** bring dart legs right sides (RS) together, pinning along marked lines. Stitch along marked lines from dart base to dart point. Backstitch at the beginning but not at the end, leaving thread tails a few inches long. Tie thread tails by hand. Press darts down.

**3. Sew shoulder and side seams:** pin vest front to vest back at shoulder and side seams, RS together. Stitch. Press seam allowances open.

### Neck Facing

**1. Assemble neck facing unit:** pin Front Neck Facing (3) to Back Neck Facing (4) at shoulder seams, RS together. Stitch. Press seam allowances open.

**2. Attach facing to vest:** pin neck facing unit to vest neckline, RS together, matching notches and seams. Stitch, following marked stitching line at center front. Grade seam allowances so that vest's are widest and facing's are narrower. Clip corners and curves every 1/2 in. Turn facing to WS. Press edge, rolling seamline inside.

**3. Topstitch neck facing:** from vest RS, using a straight stitch, topstitch all the way around neck facing 1 in (2.5 cm) from edge.

### Armhole Facing

**1. Assemble armhole facing unit:** pin Front Armhole Facing (5) to Back Armhole Facing (6) at shoulder and underarm seams. Stitch to form a ring. Clip into curves of underarm seam allowances. Press open.

**2. Sew armhole facing unit to vest:** pin each armhole facing unit to each armhole, RS together, matching notches and seams. Stitch. Grade seam allowances so that vest seam allowance is wider and facing seam

allowance is narrower. Clip curves every 1/2 in (1.3 cm). Turn facing unit to WS of vest. Press edge, rolling seamline inside.

**3. Topstitch armhole facing:** from vest RS, using a straight stitch, topstitch all the way around armhole facing 1 in (2.5 cm) from edge.

### Hem

**1. Hem vest:** finish raw edge of hem by serging or other desired method. Fold and press the edge under 5/8 in (1.5 cm). Topstitch 1/2 in (1.3 cm) from the fold.

*Enjoy your cute new Judy vest!*

## PATTERN PIECE LOCATION GUIDE

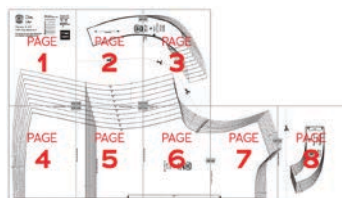


Here is a list to help you locate the pattern pieces on the letter-size tiled pages and A0 pattern sheets. The tiled pieces and A0 sheets are included as separate pdf files as part of this digital pattern.

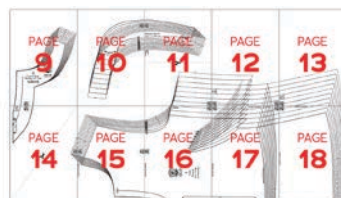
| PC# | Piece Name                    | SIZES 2-20 |    | SIZES 18-34 |    |
|-----|-------------------------------|------------|----|-------------|----|
|     |                               | Tiled      | A0 | Tiled       | A0 |
| 1   | Vest Front, A-C Cup           | 11-18      | 1  | 11-20       | 1  |
| 1   | Vest Front, D-F Cup           | 21-28      | 1  | 21-30       | 1  |
| 1   | Vest Front, G-H Cup           | 31-38      | 1  | 31-40       | 2  |
| 2   | Vest Back                     | 1-8        | 2  | 1-3, 6-10   | 2  |
| 3   | Front Neck Facing, A-C Cup    | 9, 14      | 2  | 11-12       | 2  |
| 3   | Front Neck Facing, D-F Cup    | 19, 24     | 2  | 21-22       | 2  |
| 3   | Front Neck Facing, G-H Cup    | 29, 34     | 2  | 31-32       | 2  |
| 4   | Back Neck Facing              | 8          | 2  | 10          | 2  |
| 5   | Front Armhole Facing, A-C Cup | 10-11      | 2  | 11-12, 16   | 1  |
| 5   | Front Armhole Facing, D-F Cup | 20-21      | 2  | 21-22, 26   | 1  |
| 5   | Front Armhole Facing, G-H Cup | 30-32      | 2  | 31-32, 36   | 2  |
| 6   | Back Armhole Facing           | 2-3        | 2  | 4-5, 10     | 2  |

### TILING MAP, SIZES 2-20

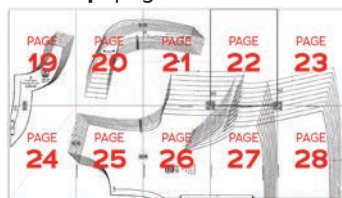
All cups: pages 1-8



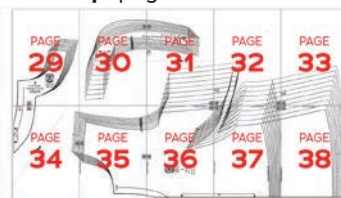
A-C Cup: pages 9-18



D-F Cup: pages 19-28

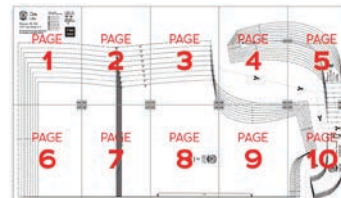


G-H Cup: pages 29-38



### TILING MAP, SIZES 18-34

All cups: pages 1-10



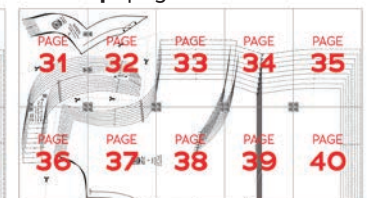
A-C Cup: pages 11-20



D-F Cup: pages 21-30



G-H Cup: pages 31-40



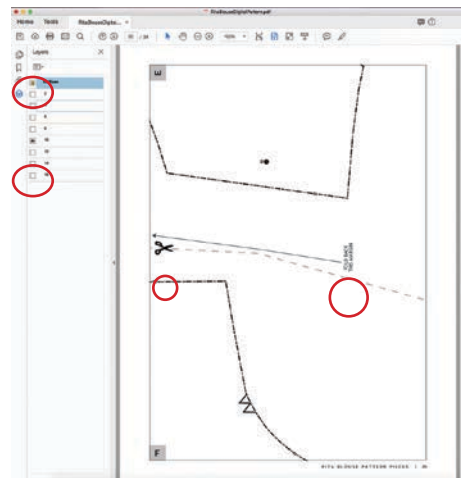
## HOW TO USE THIS PATTERN

The pattern pieces are tiled so you can print them on Letter (8½" x 11") or A4 size paper. You can also send the A0 pattern sheet PDF to a local or online printer (like [www.pdfplotting.com](http://www.pdfplotting.com)) to print on large sheets (36" x 48" for U.S. or A0 for international).

This pattern includes size layers. To get the best results, open either the Tiled or A0 pattern pieces PDF in Acrobat Reader.

Open the Layers Palette (View>Show/Hide>Navigation Panes>Layers) and hide all of the layer(s) except for the ones you want to print by clicking on the eye icon.

The All Sizes layer has general pattern information and will always print.



## WORKING WITH THE TILED PIECES

Go to File>Print and change the page range to the pages you need for the pieces you've chosen (see Pattern Pieces Printing Index). Make sure the Page Sizing settings to 100% or Actual Size. Test this after printing by measuring the 1" test box on the first page of the bodice pattern pieces.

Cut apart any pattern pieces that share a page by cutting on the gray long dashed lines. Then fold back the page margins on each page as directed.

Tape the pages together, butting up the folded page edges with the gray margin lines, matching up the letters in gray boxes.

## MORE FROM GERTIE

[On Instagram:](#) Stay in the loop and get inspired.

[On YouTube:](#) Learn beginner and advanced sewing skills and techniques through my tutorials, watch episodes of my Gertie's World series, and join regular live streams.

[On Patreon:](#) Access monthly patterns and tutorial videos.

[At CharmPatterns.com:](#) Shop my sewing patterns and accessories.

