



Skipper Dress and Bodysuit

Sizes 18-34
with cup sizes A-H

5/8 inch (in) (1.5 cm) seam allowances
are included on all pattern pieces.

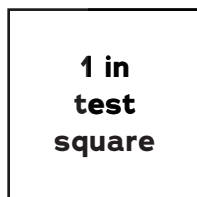
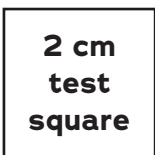
© 2024 Charm Patterns by Gertie
Distribution and Commercial Use Prohibited

SYMBOL KEY

grainline arrow

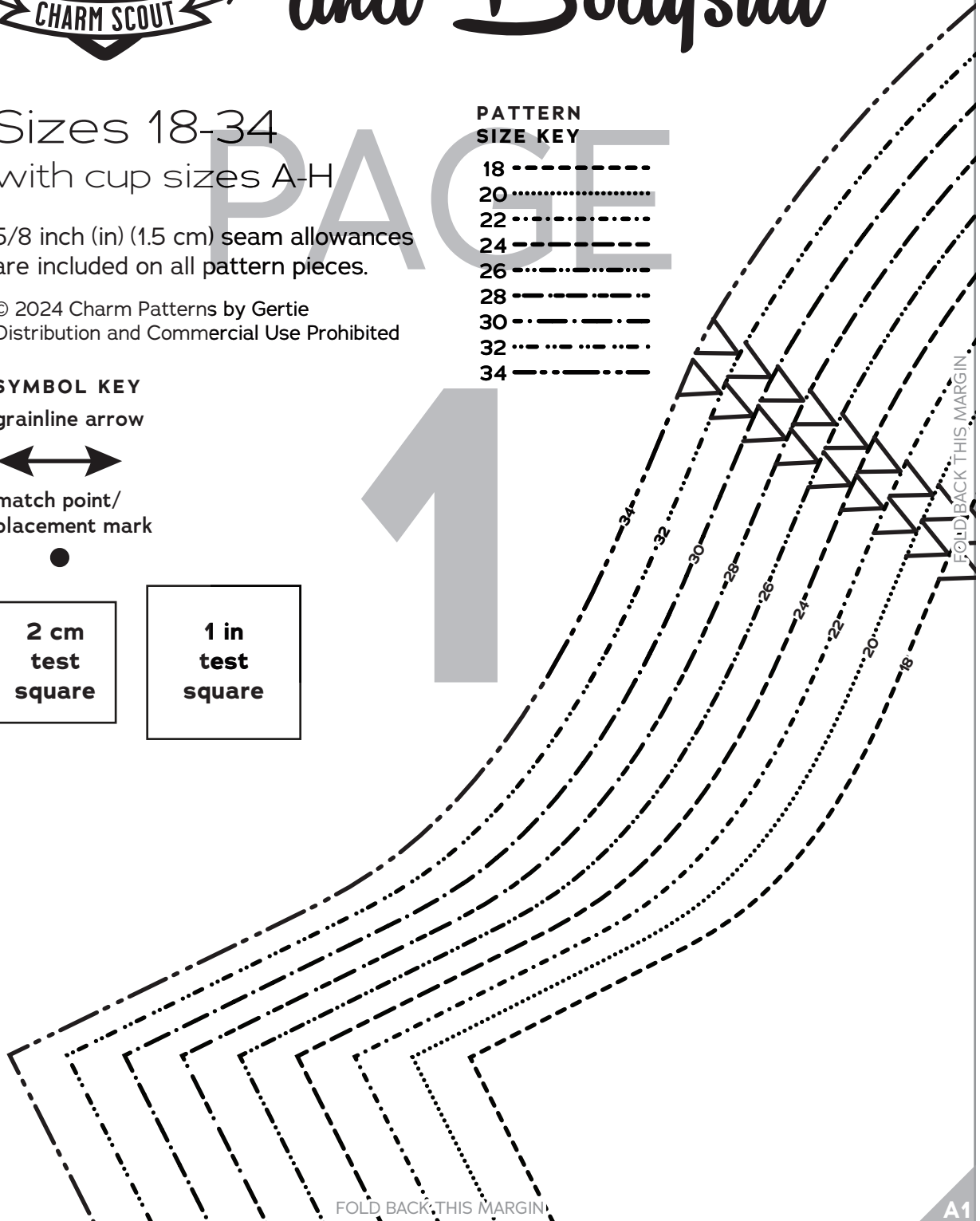


match point/
placement mark



PATTERN SIZE KEY

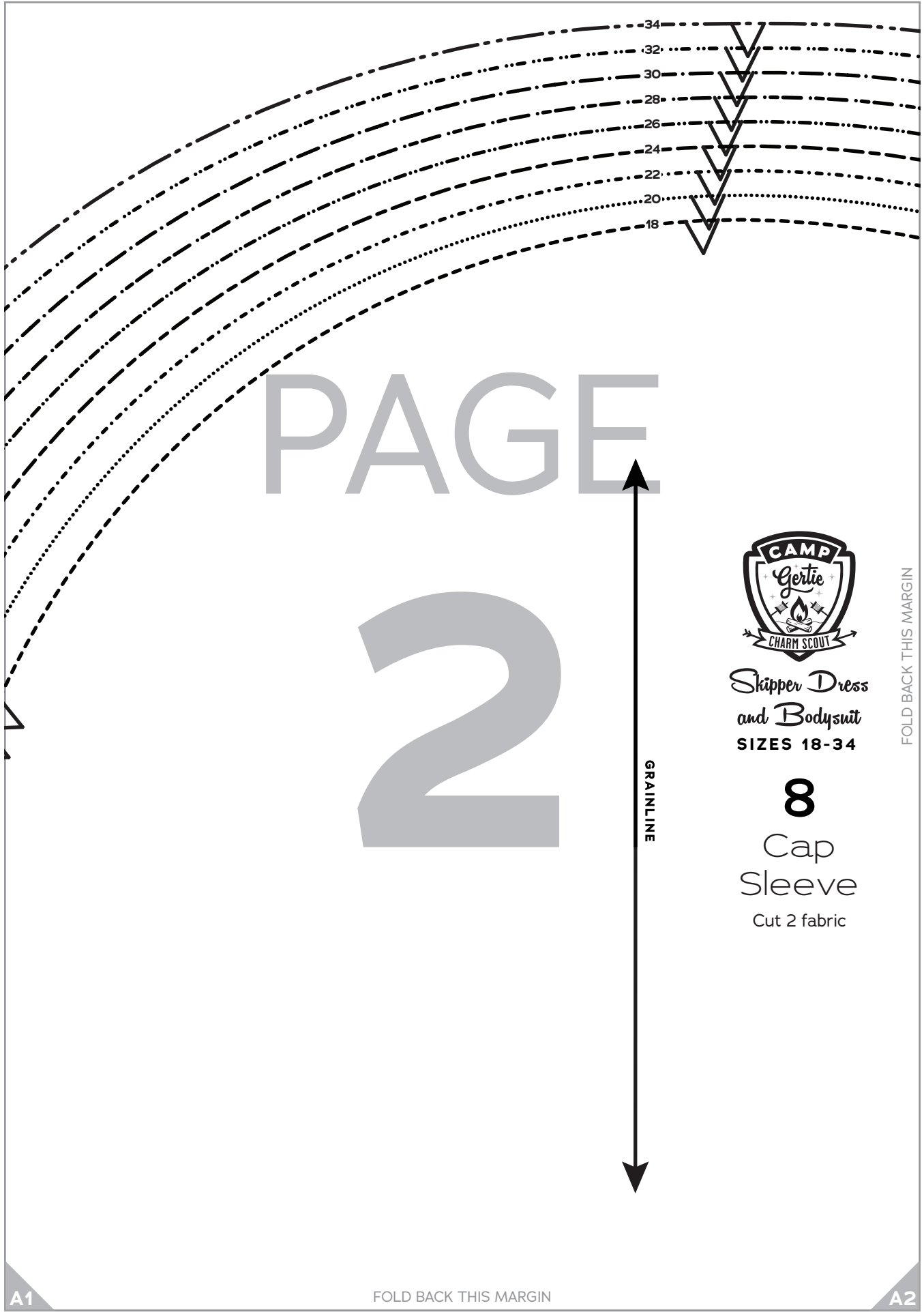
| | |
|----|-------|
| 18 | ----- |
| 20 | |
| 22 | ----- |
| 24 | ----- |
| 26 | ----- |
| 28 | ----- |
| 30 | ----- |
| 32 | ----- |
| 34 | ----- |



FOLD BACK THIS MARGIN

FOLD BACK THIS MARGIN

A1



34
32
30
28
26
24
22
20
18

PAGE

2



*Skipper Dress
and Bodysuit*
SIZES 18-34

8
Cap
Sleeve
Cut 2 fabric

GRAINLINE

FOLD BACK THIS MARGIN

A1

FOLD BACK THIS MARGIN

A2

PAGE
3

FOLD BACK THIS MARGIN

A2

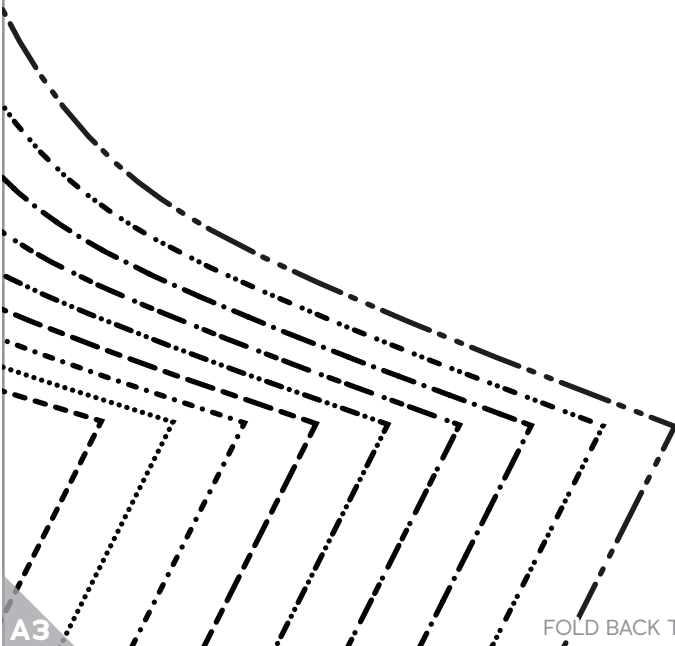
FOLD BACK THIS MARGIN

A3

PAGE

4

FOLD BACK THIS MARGIN



A3

FOLD BACK THIS MARGIN

A4

TAPE THIS EDGE TO THE TOP BACK PATTERN PIECE OF YOUR CHOICE
(Choose any Barbie-series top from the waistline up)
DO NOT CUT FABRIC ON THIS LINE

PAGE

5

FOLD BACK THIS MARGIN



A4

FOLD BACK THIS MARGIN

A5

PAGE

6

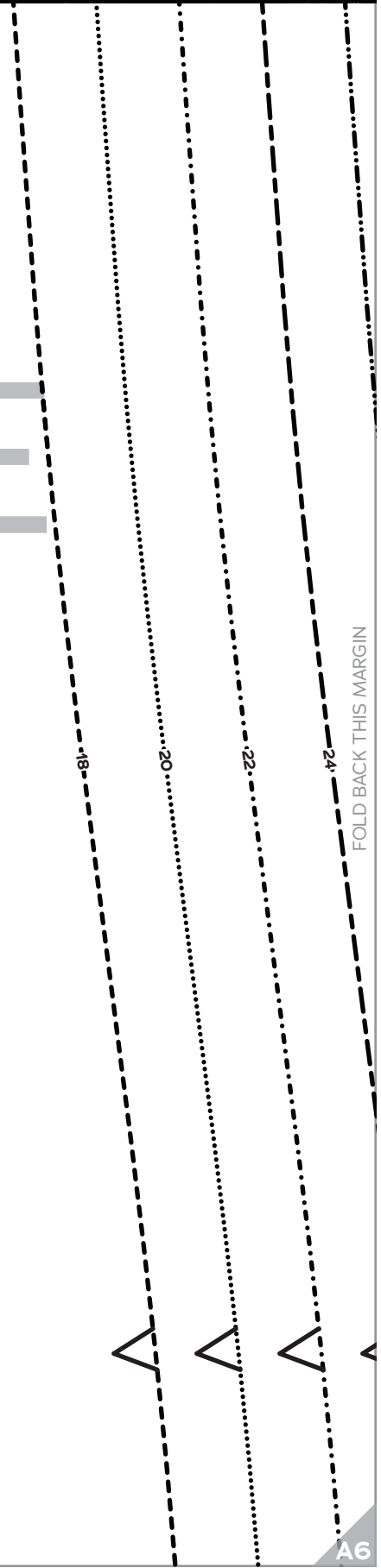


*Skipper Dress
and Bodysuit*
SIZES 18-34

2

Skirt Back

Tape to bodice back and
cut 1 fabric on fold



FOLD BACK THIS MARGIN

A5

FOLD BACK THIS MARGIN

A6

PAGE

7

FOLD BACK THIS MARGIN

FOLD BACK THIS MARGIN

A6

A7

PAGE

8

FOLD BACK THIS MARGIN

A7

FOLD BACK THIS MARGIN

A8

TAPE THIS EDGE TO THE TOP BACK PATTERN PIECE OF YOUR CHOICE

(Choose any Barbie-series top from the waistline up)

DO NOT CUT FABRIC ON THIS LINE

PAGE

9



*Skipper Dress
and Bodysuit*
SIZES 18-34

1

Skirt Front,
A-D/DD Cup

Tape to bodice front and
cut 1 fabric on fold

FOLD BACK THIS MARGIN



A8

FOLD BACK THIS MARGIN

A9

PAGE

10

34

32

30

28

26

24

22

20

18

FOLD BACK THIS MARGIN

A9

FOLD BACK THIS MARGIN

A10

TAPE THIS EDGE TO THE TOP BACK PATTERN PIECE OF YOUR CHOICE
(Choose any Barbie-series top from the waistline up)
DO NOT CUT FABRIC ON THIS LINE

PAGE

11



*Skipper Dress
and Bodysuit*
SIZES 18-34

1

Skirt Front,
F-H Cup

Tape to bodice front and
cut 1 fabric on fold

FOLD BACK THIS MARGIN

A10

FOLD BACK THIS MARGIN

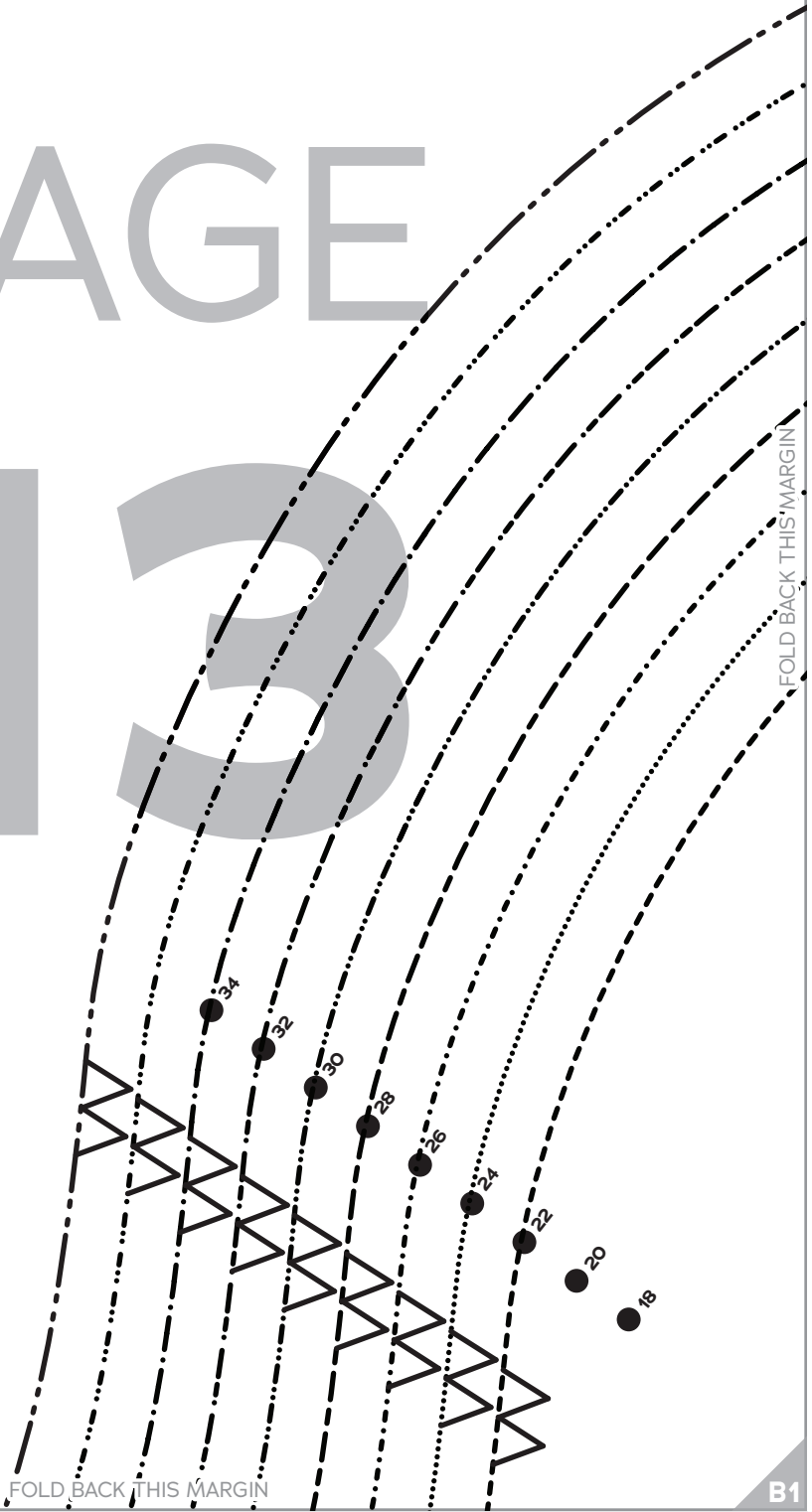
A11

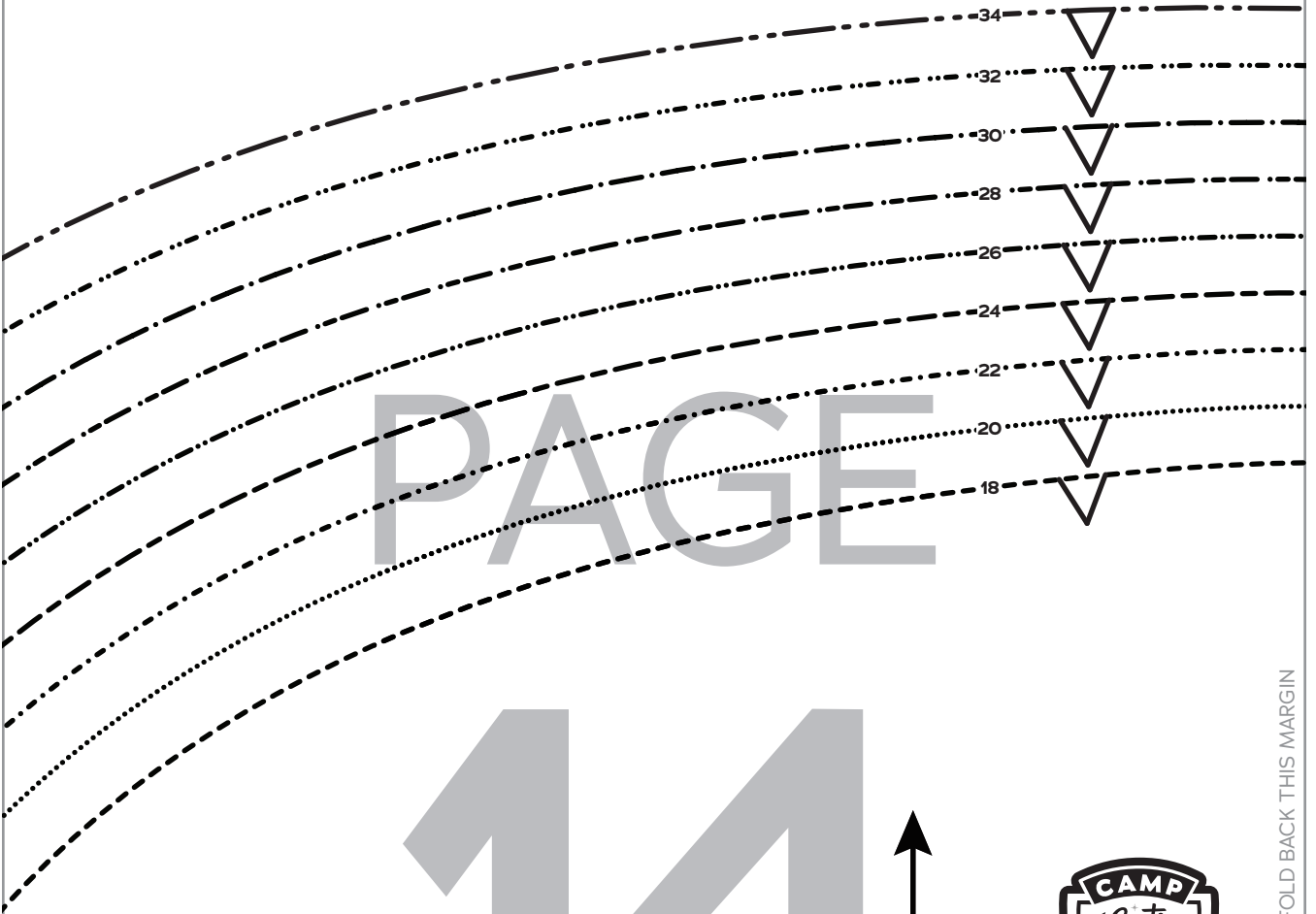
PAGE

12



PAGE 13





PAGE

14



*Skipper Dress
and Bodysuit*
SIZES 18-34

7
Puff
Sleeve
Cut 2 fabric

FOLD BACK THIS MARGIN

A2

A3

PAGE

15

FOLD BACK THIS MARGIN

18
20
22

B2

FOLD BACK THIS MARGIN

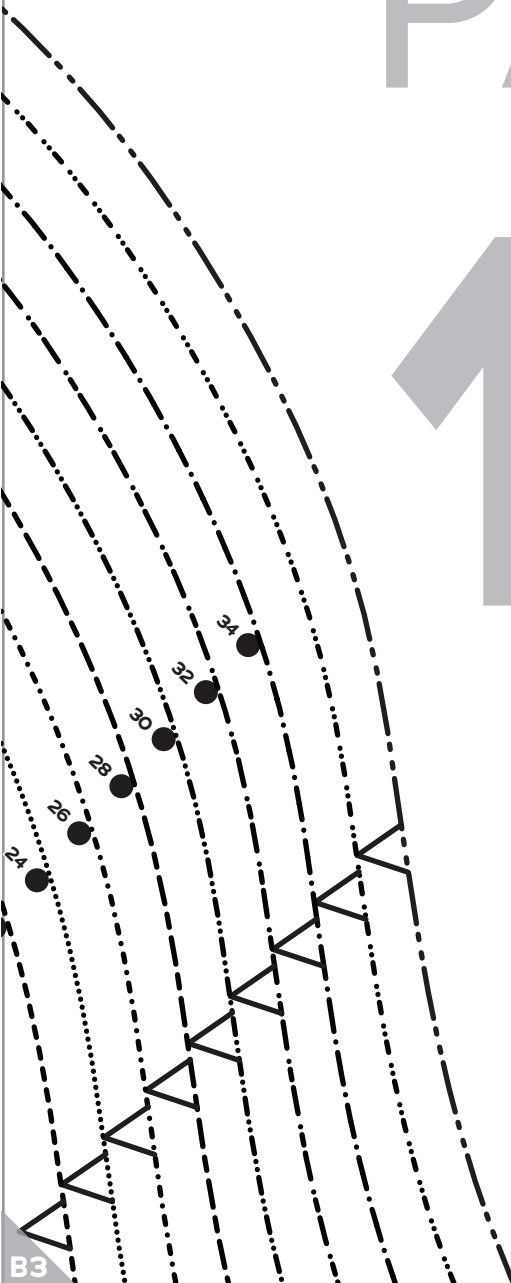
B3

A3

A4

PAGE 16

FOLD BACK THIS MARGIN



B3

FOLD BACK THIS MARGIN

B4

A4

A5

PAGE

17

FOLD

FOLD BACK THIS MARGIN

B4

FOLD BACK THIS MARGIN

B5

A5

A6

PAGE 18

FOLD BACK THIS MARGIN

B5

FOLD BACK THIS MARGIN

B6

A6

A7

PAGE
19

FOLD BACK THIS MARGIN

B6

FOLD BACK THIS MARGIN

B7

A7

A8

PAGE

20

FOLD BACK THIS MARGIN

B7

FOLD BACK THIS MARGIN

B8

A8

A9

PAGE

21

FOLD

FOLD BACK THIS MARGIN

B8

FOLD BACK THIS MARGIN

B9

A9

A10

PAGE
22

FOLD BACK THIS MARGIN

B9

FOLD BACK THIS MARGIN

B10

A10

A11

PAGE 23

FOLD BACK THIS MARGIN

B10

FOLD BACK THIS MARGIN

B11

A11

PAGE
24

FOLD

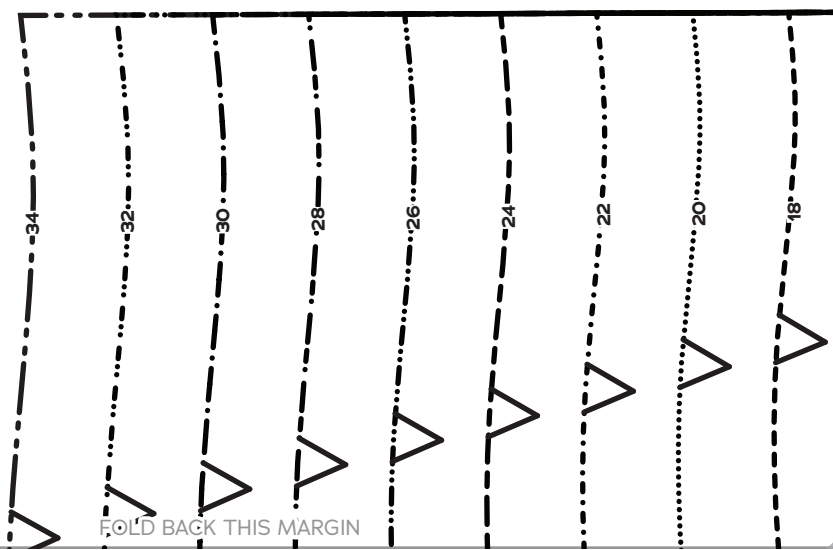
B11

FOLD BACK THIS MARGIN

PAGE

25

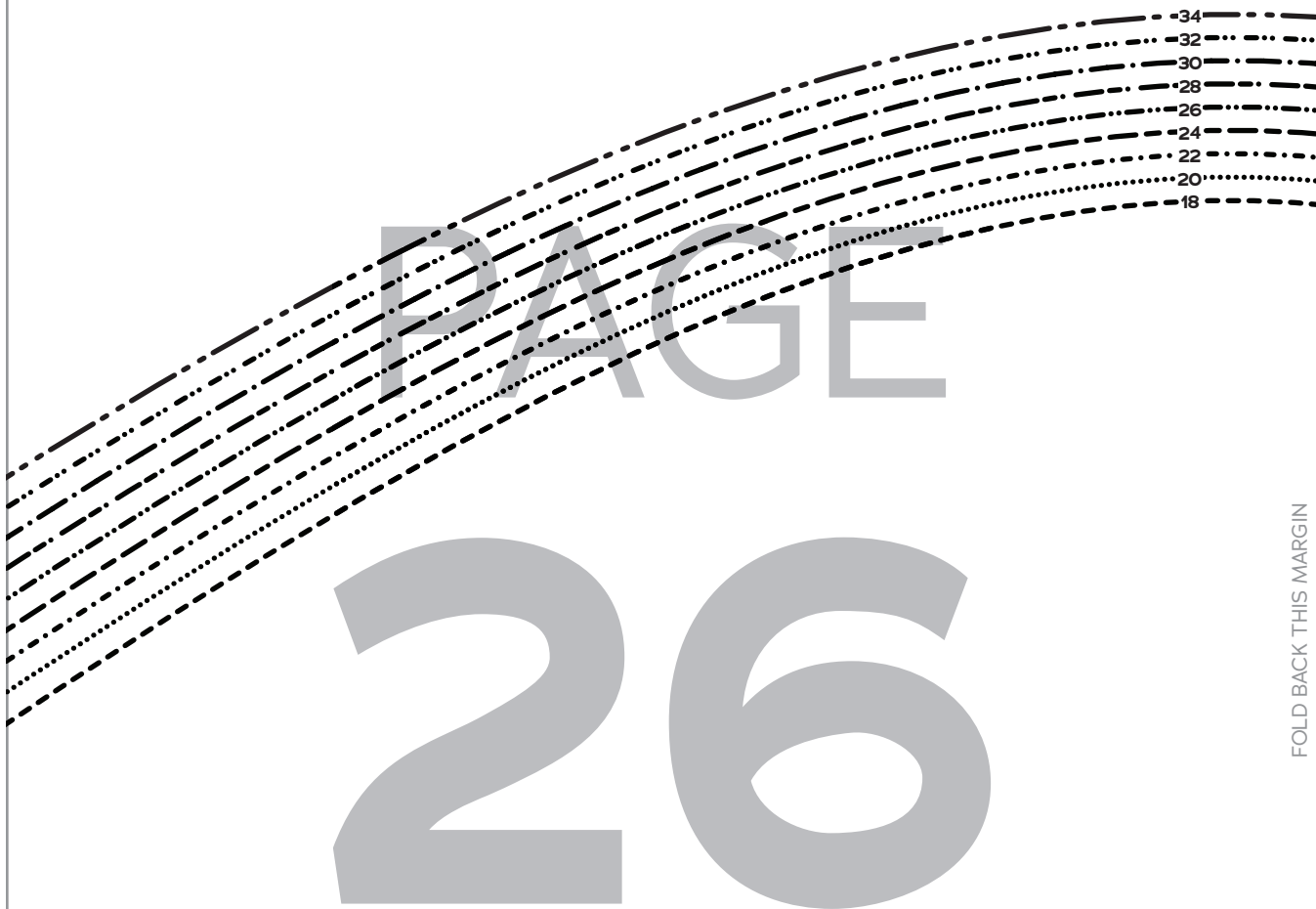
FOLD BACK THIS MARGIN



FOLD BACK THIS MARGIN

B1

B2



FOLD BACK THIS MARGIN

TAPE THIS EDGE TO THE TOP BACK PATTERN PIECE OF YOUR CHOICE

(Choose any Barbie-series top from the waistline up)

DO NOT CUT FABRIC ON THIS LINE



*Skipper Dress
and Bodysuit*
SIZES 18-34

C1

FOLD BACK THIS MARGIN

C2

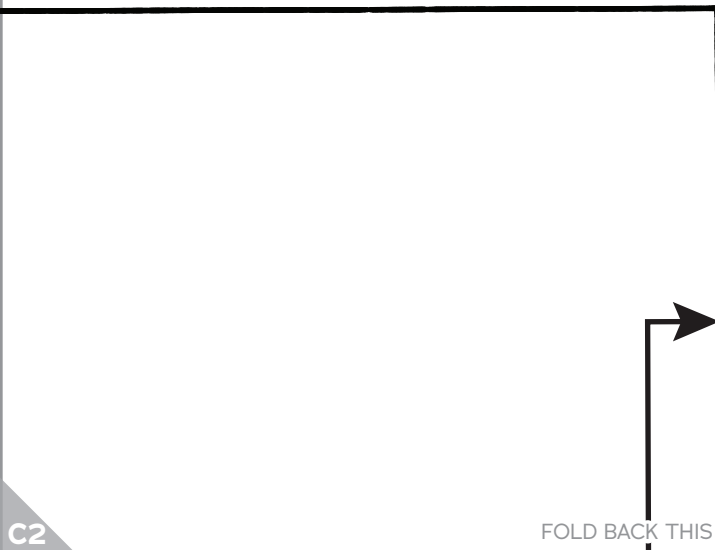
B2

B3

PAGE

27

FOLD BACK THIS MARGIN



FOLD BACK THIS MARGIN

C2

C3

B3

B4

PAGE

28

FOLD BACK THIS MARGIN

C3

FOLD BACK THIS MARGIN

C4

B4

B5



PAGE

29

FOLD BACK THIS MARGIN

C4

FOLD BACK THIS MARGIN

C5

B5

B6

PAGE 30

18

20

FOLD BACK THIS MARGIN

C5

FOLD BACK THIS MARGIN

C6

B6

B7

22

24

26

28

30

32

34

34

32

30

28

26

24

22

20

PAGE 31

FOLD BACK THIS MARGIN

C6

FOLD BACK THIS MARGIN

C7

B7

B8

18

PAGE

32

FOLD BACK THIS MARGIN

C7

FOLD BACK THIS MARGIN

C8

B8

B9



PAGE

33

FOLD BACK THIS MARGIN

C8

FOLD BACK THIS MARGIN

C9

B9

B10

34

32

30

28

26

24

22

20

18

PAGE
34

FOLD BACK THIS MARGIN

C9

FOLD BACK THIS MARGIN

C10

B10

B11

PAGE 35

FOLD BACK THIS MARGIN

C10

FOLD BACK THIS MARGIN

PAGE
36

C1

PAGE

37

FOLD BACK THIS MARGIN

34
32
30
28
26
24
22
20
18

FOLD BACK THIS MARGIN

D1

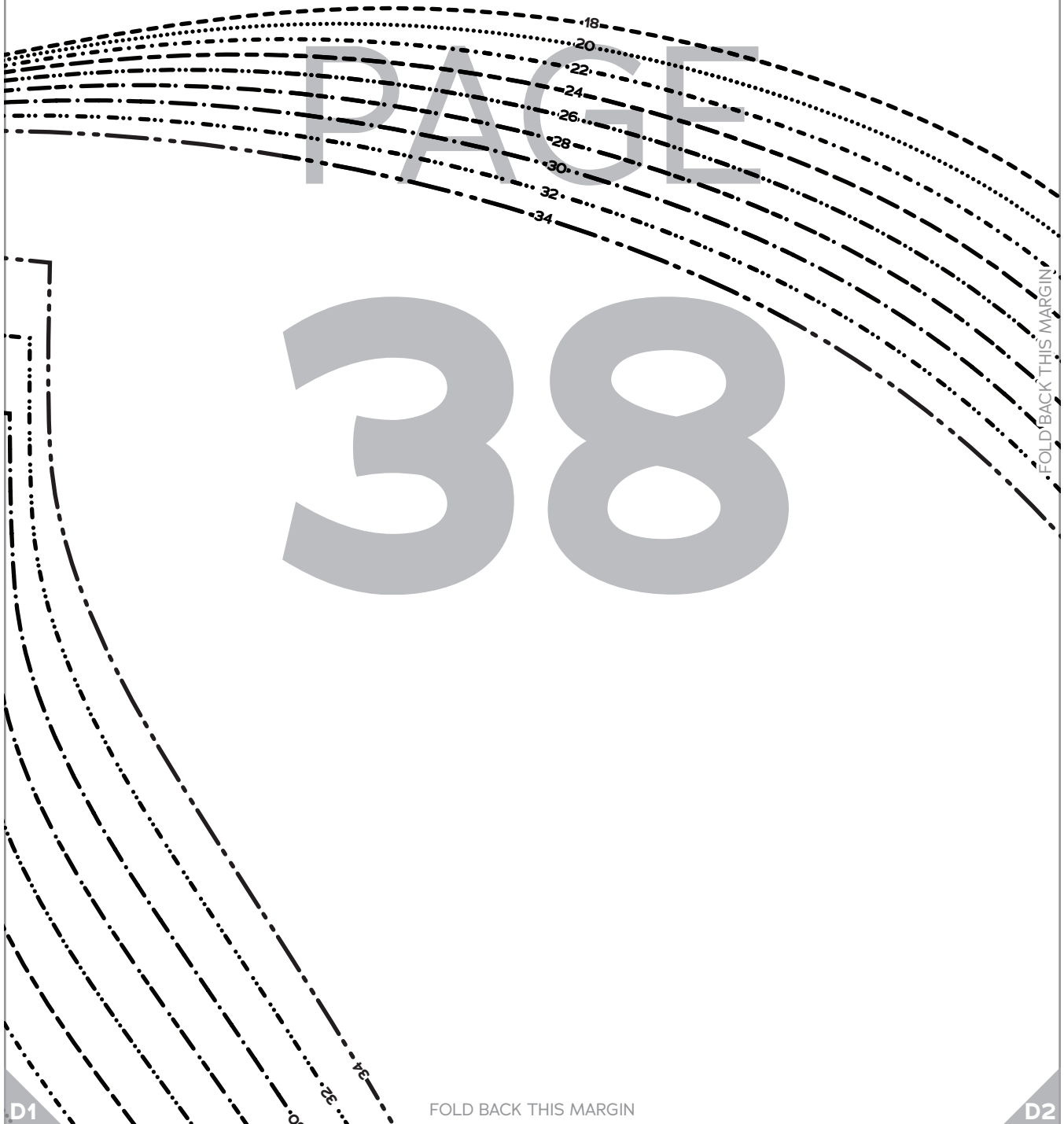
C1

C2

3

Bodysuit Front, F-H Cup

Tape to bodice front and cut 1
fabric on fold



D1

FOLD BACK THIS MARGIN

D2

C2

C3

FOLD

PAGE

39

CROTCH
OVERLAP

FOLD BACK THIS MARGIN

22
24
26
28
30
32
34

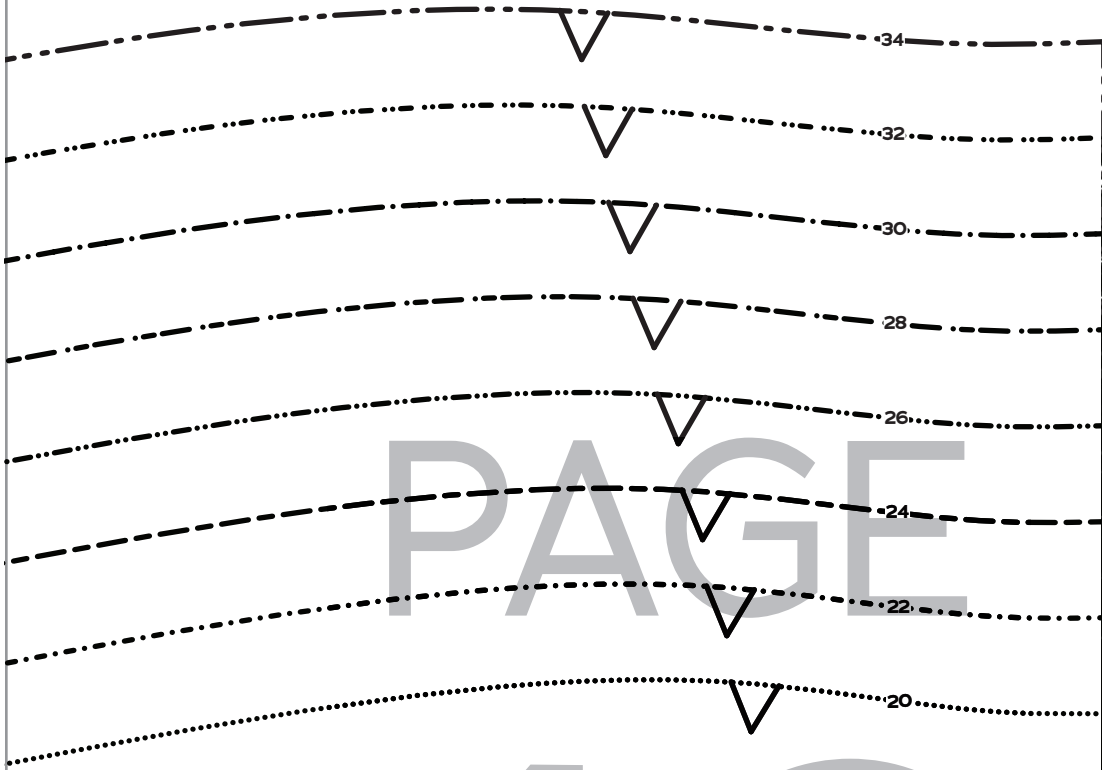
D2

FOLD BACK THIS MARGIN

D3

C3

C4



PAGE

40

FOLD BACK THIS MARGIN

D3

FOLD BACK THIS MARGIN

D4

C4

C5



PAGE

41

TAPE THIS EDGE TO THE TOP BACK PATTERN PIECE OF YOUR CHOICE
(Choose any Barbie-series bottom from the waistline down)
DO NOT CUT FABRIC ON THIS LINE

FOLD BACK THIS MARGIN

FOLD BACK THIS MARGIN

D4

D5

FOLD



Skipper Dress
and Bodysuit
SIZES 18-34

6

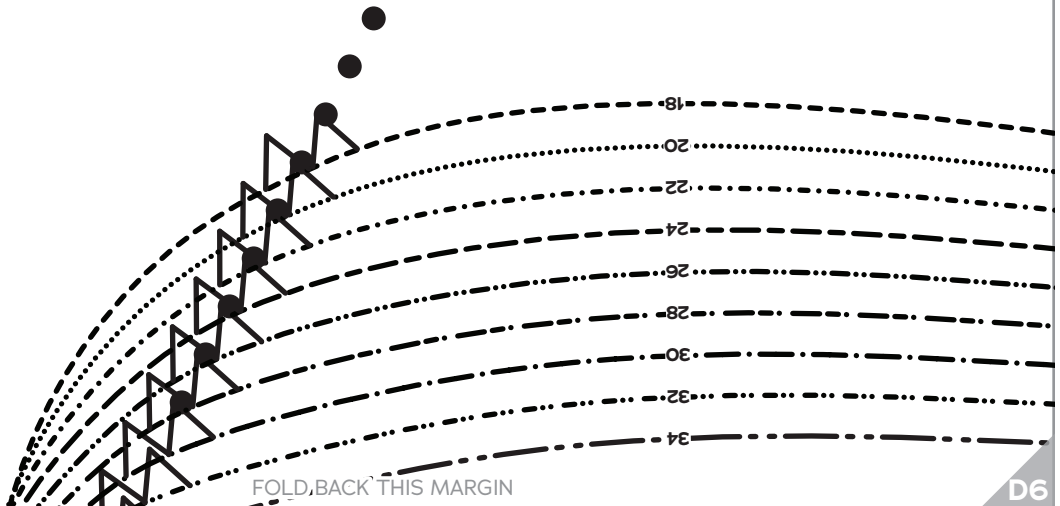
Scoop Neck
Top Back

Tape to bottom back and
cut 1 fabric on fold

PAGE

42

FOLD BACK THIS MARGIN



FOLD BACK THIS MARGIN

C6

C7

34
32
30
28
26
24
22
20
18

34
32
30
28
26
24
22
20
18

PAGE
43

FOLD BACK THIS MARGIN

34
32
30
28
26
24
22
20
18

34 32 30 28 26 24 22 20 18

D6

FOLD BACK THIS MARGIN

D7

C7

C8

PAGE

44

FOLD BACK THIS MARGIN

D7

FOLD BACK THIS MARGIN

D8

C8

C9

PAGE 45

FOLD BACK THIS MARGIN



D8

FOLD BACK THIS MARGIN

D9

PAGE 46

FOLD BACK THIS MARGIN



*Skipper Dress
and Bodysuit*
SIZES 18-34

5

Scoop Neck
Top Front,
F-H Cup

Tape to bottom front and
cut 1 fabric on fold

FOLD BACK THIS MARGIN

C10

FOLD

PAGE

47

TAPE THIS EDGE TO THE TOP BACK PATTERN PIECE OF YOUR CHOICE
(Choose any Barbie-series bottom from the waistline down)

DO NOT CUT FABRIC ON THIS LINE

D10

FOLD BACK THIS MARGIN

TAPE THIS EDGE TO THE TOP BACK PATTERN PIECE OF YOUR CHOICE
(Choose any Barbie-series top from the waistline up)
DO NOT CUT FABRIC ON THIS LINE

48



*Skipper Dress
and Bodysuit*
SIZES 18-34

4

*Bodysuit
Back*

Tape to bodice back and
cut 1 fabric on fold

FOLD BACK THIS MARGIN

D1

D2

18
20
22
24
26
28

PAGE
49

FOLD BACK THIS MARGIN

FOLD

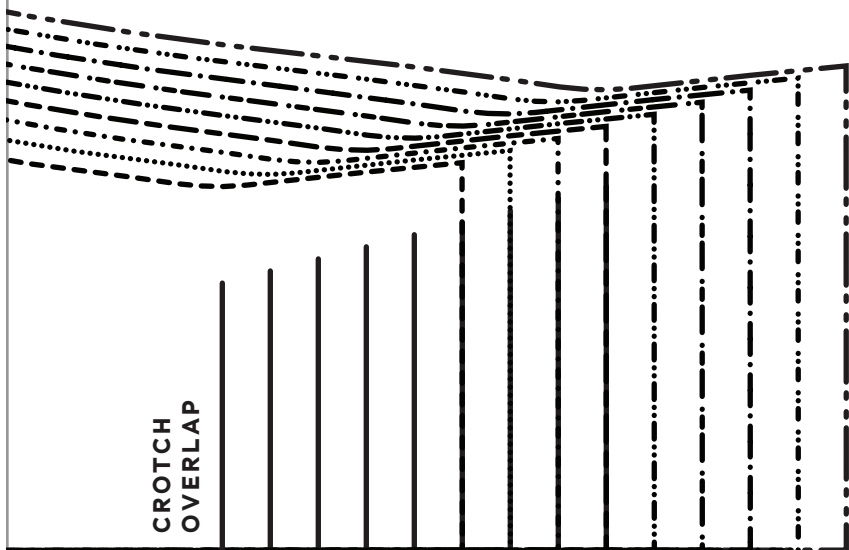
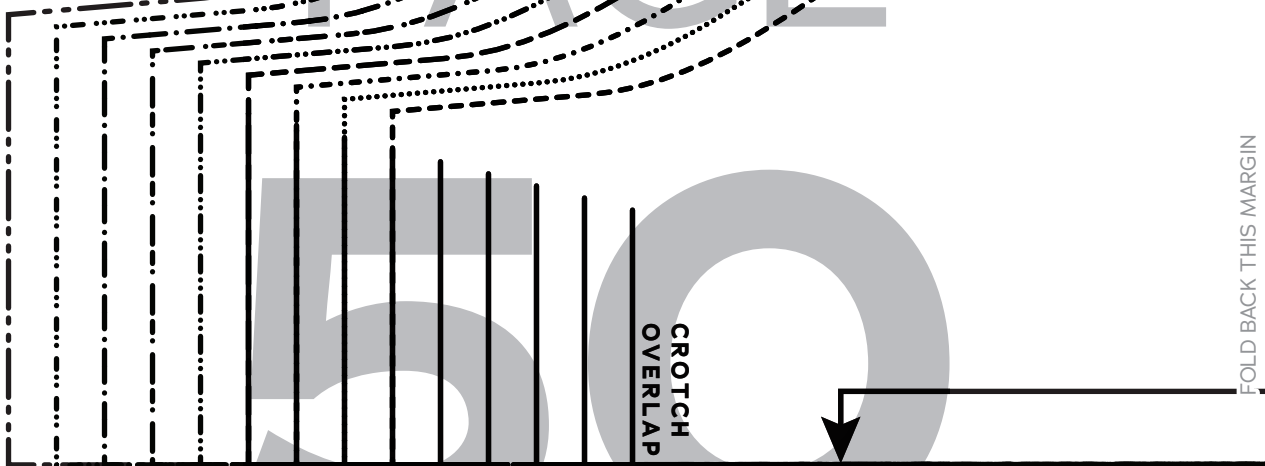


D2

D3

PAGE

50



D4

FOLD BACK THIS MARGIN

TAPE THIS EDGE TO THE TOP BACK PATTERN PIECE OF YOUR CHOICE

(Choose any Barbie-series top from the waistline up)

DO NOT CUT FABRIC ON THIS LINE



Skipper Dress

and Bodysuit

SIZES 18-34

3

Bodysuit Front,
A-D/DD Cup

Tape to bodice front and cut 1 fabric
on fold

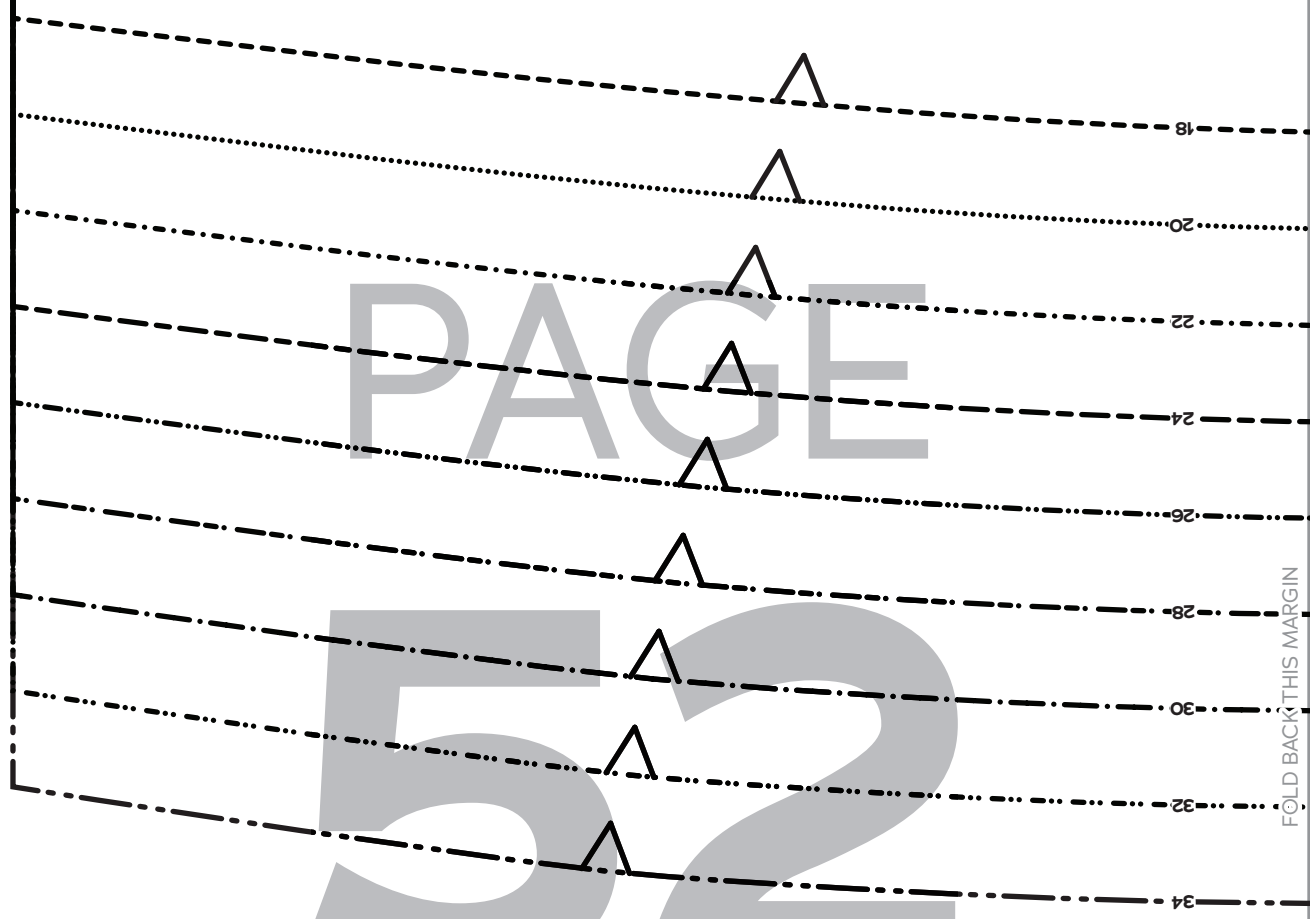
PAGE
51

FOLD

D3

D4

D5



FOLD BACK THIS MARGIN

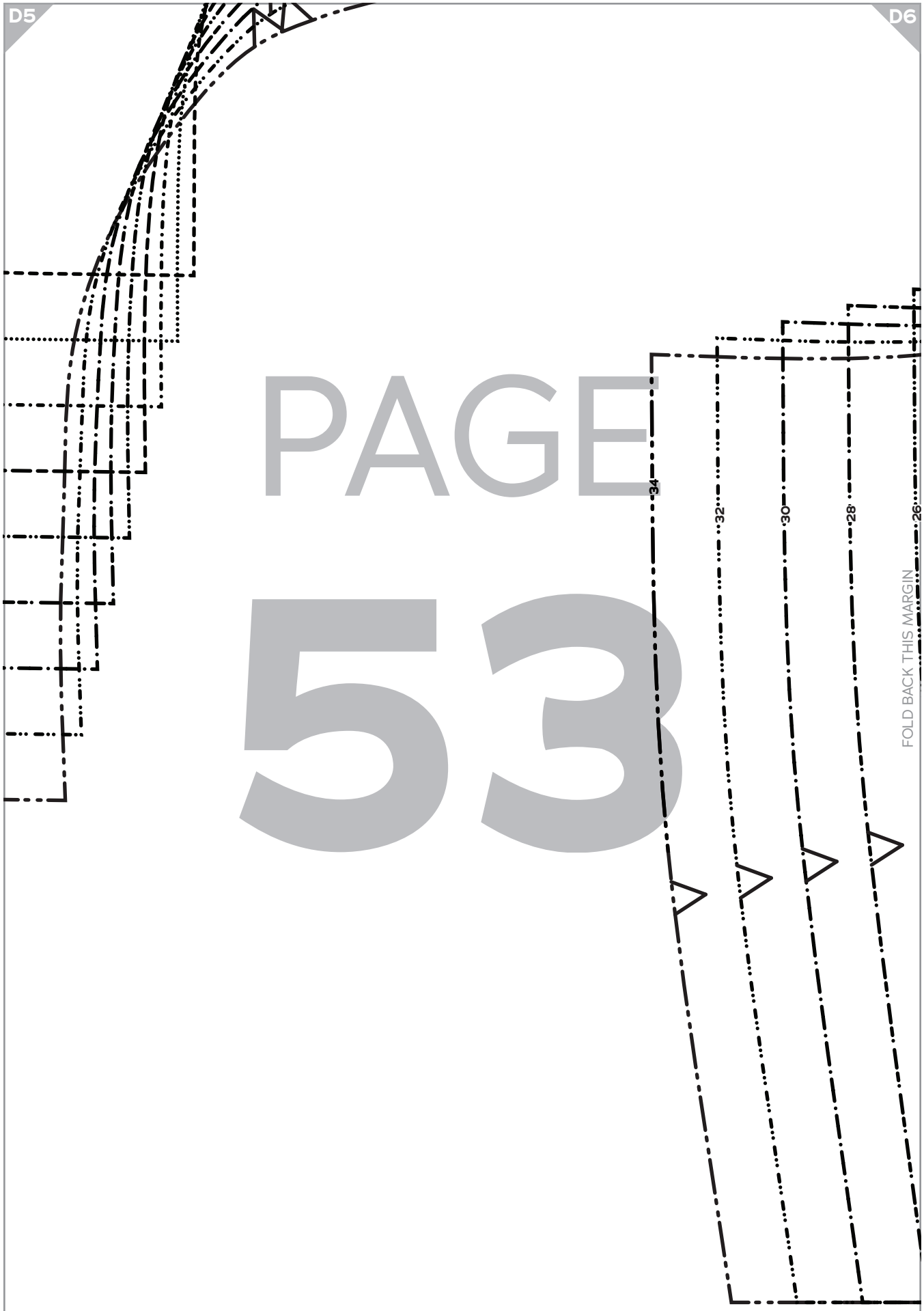
D5

D6

PAGE

53

FOLD BACK THIS MARGIN



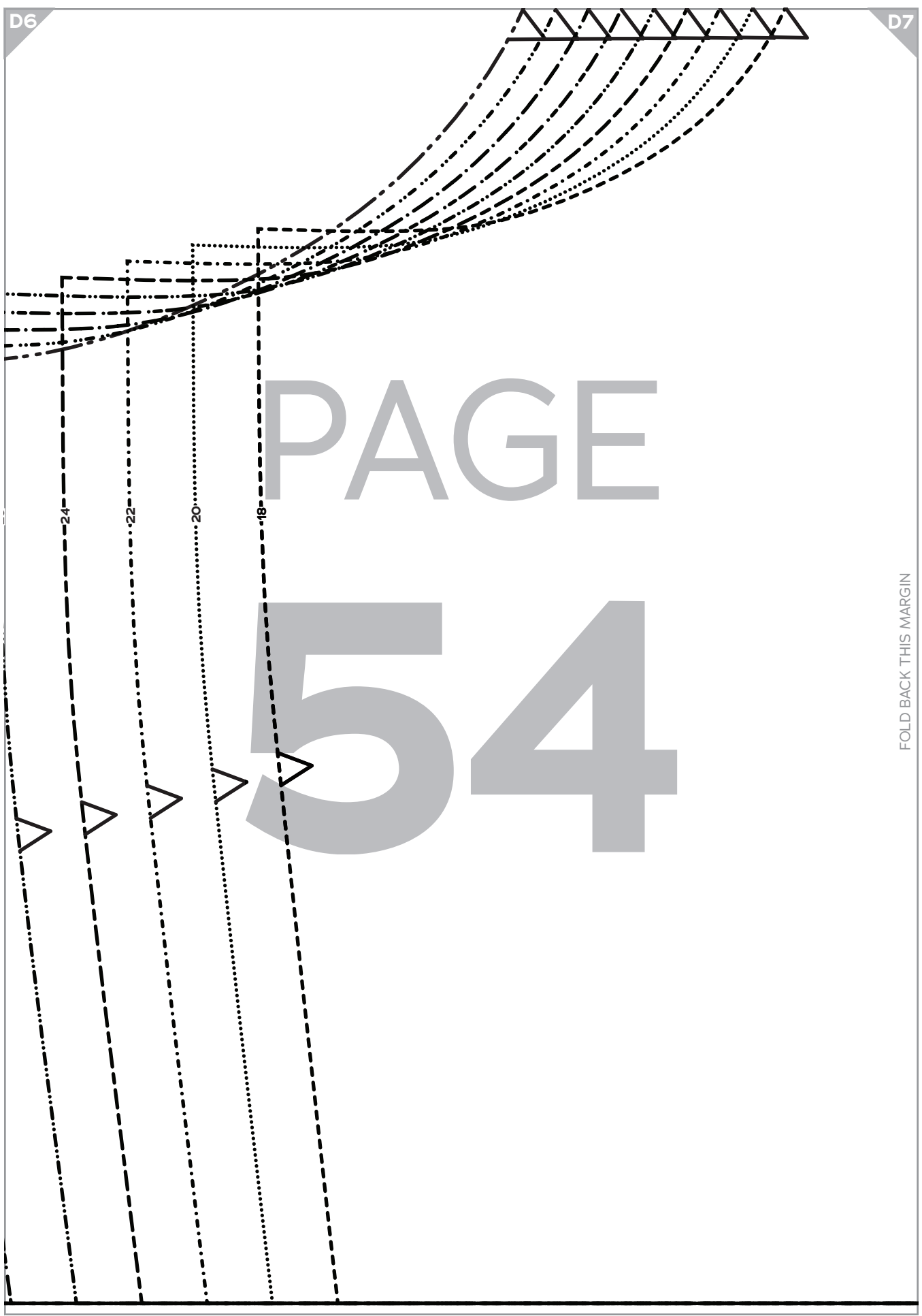
D6

D7

PAGE

54

FOLD BACK THIS MARGIN





*Skipper Dress
and Bodysuit*
SIZES 18-34

5

Scoop Neck
Top Front,
A-D/DD Cup

Tape to bottom front and
cut 1 fabric on fold

PAGE

55

FOLD

FOLD BACK THIS MARGIN

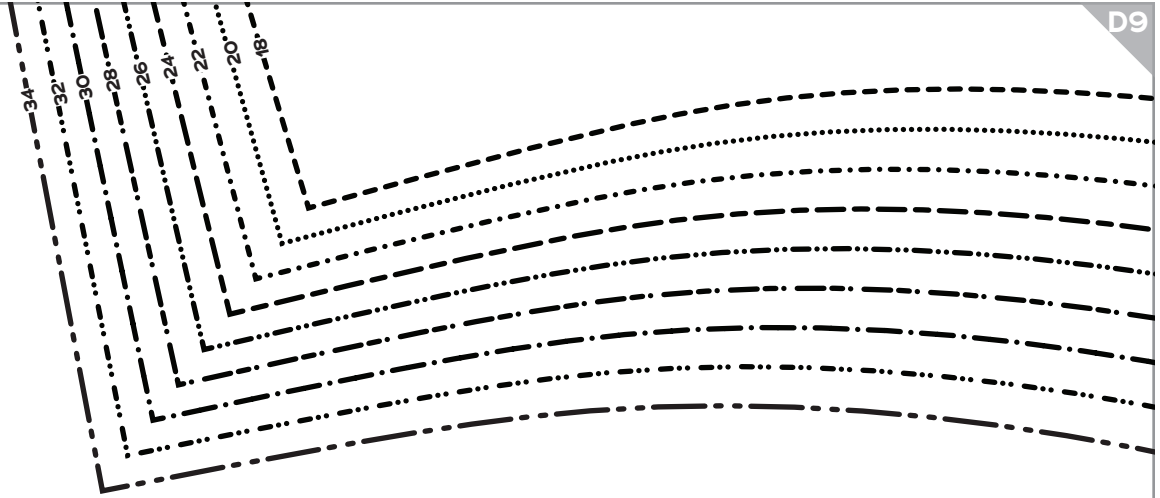
TAPE THIS EDGE TO THE TOP BACK PATTERN PIECE OF YOUR CHOICE

(Choose any Barbie-series bottom from the waistline down)

DO NOT CUT FABRIC ON THIS LINE

D8

D9



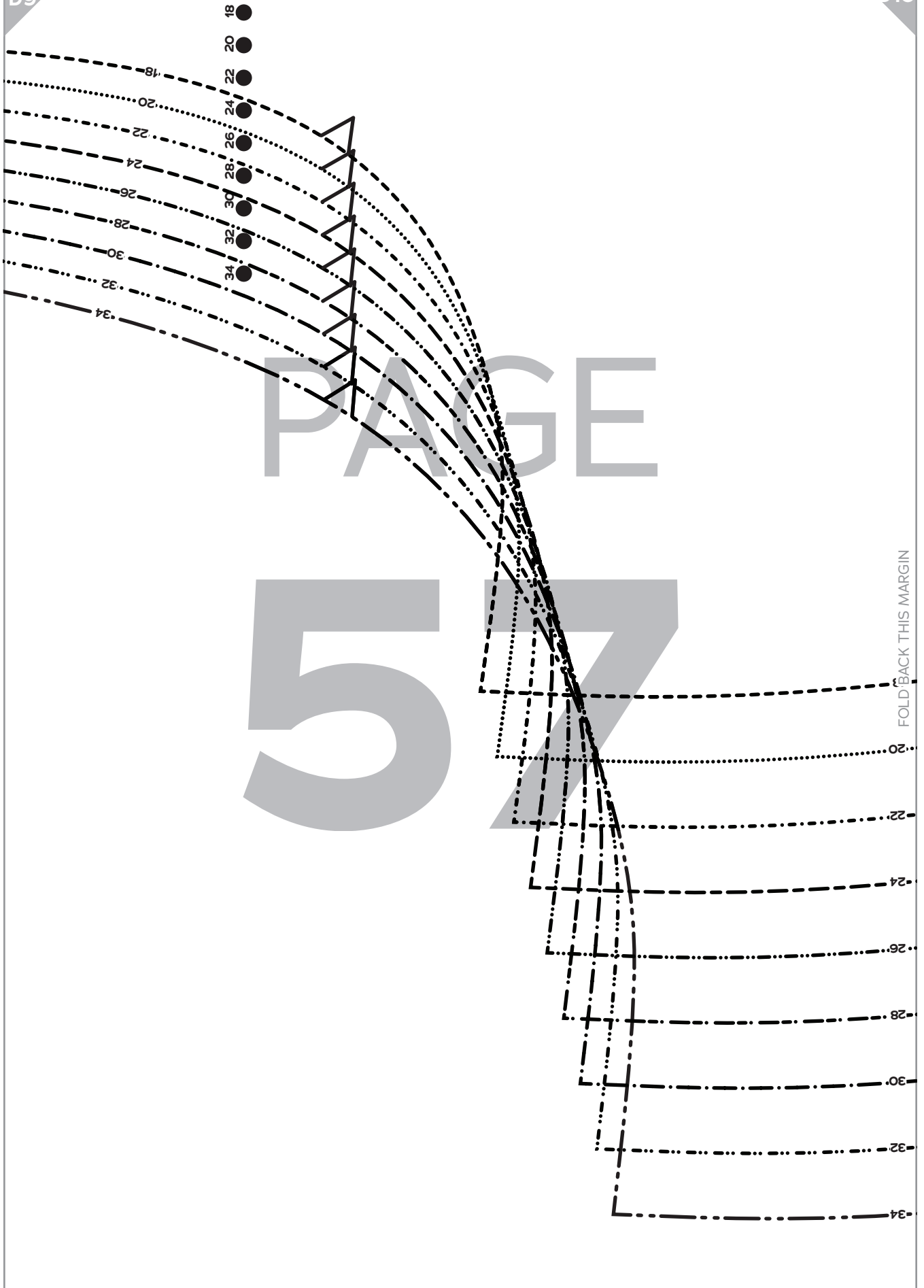
PAGE

56

FOLD BACK THIS MARGIN

D9

D10



PAGE

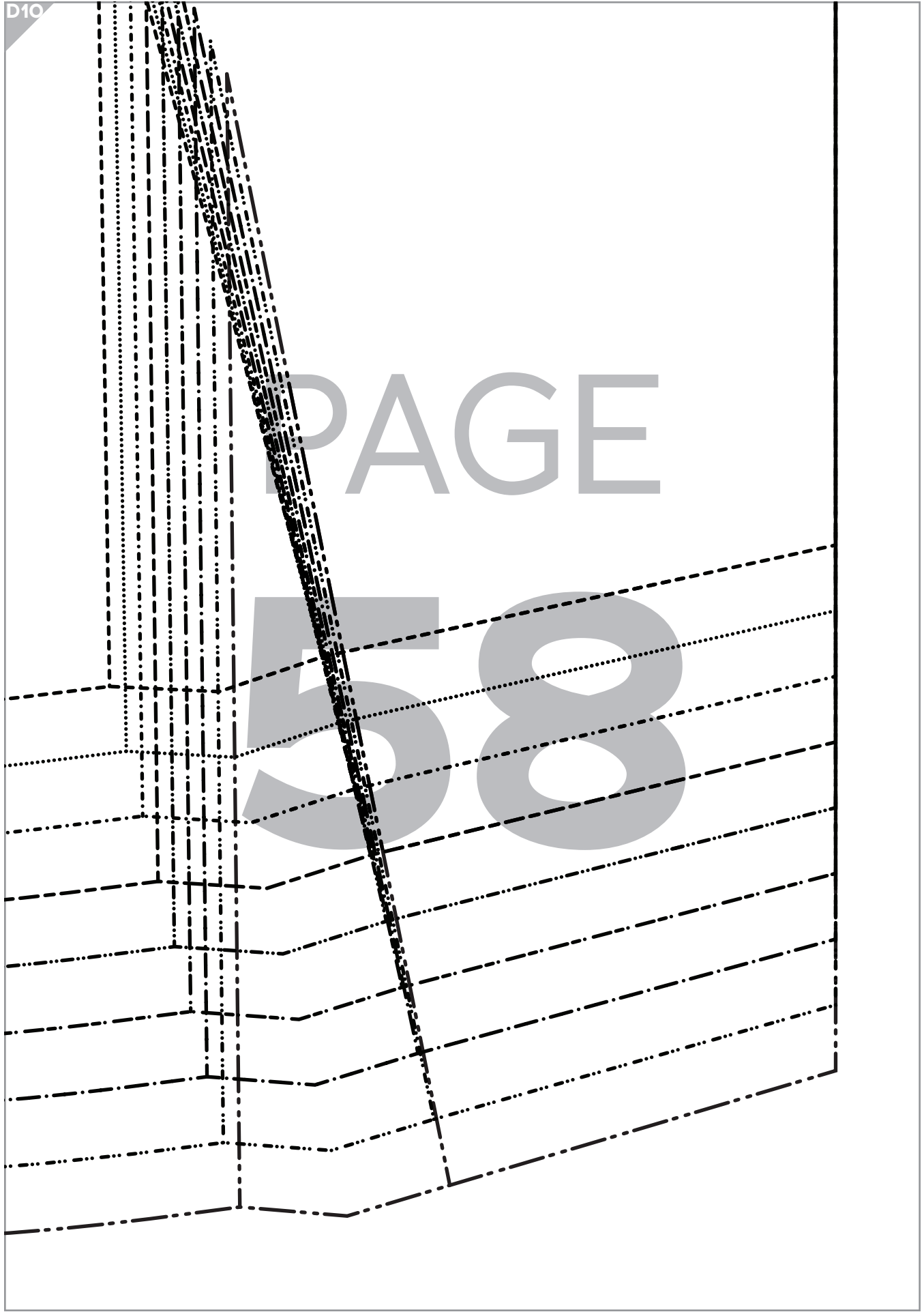
57

FOLD BACK THIS MARGIN

D10

PAGE

58



Sizes 18-24 with cup sizes A-H are included in all measurements. © 2024 Cheri Patterns by Sherie. Distribution and construction provided.

SYMBOL KEY
 dashed line = seam allowance
 solid line = finished edge
 2 in. seam allowance
 1 in. seam allowance

PAGE 1

PAGE 2

PAGE 3

PAGE 4

8 Cap Sleeve
Cut 2 pieces

PAGE 13

PAGE 14

PAGE 15

PAGE 16

7 Puff Sleeve
Cut 2 pieces

PAGE 25

PAGE 26

PAGE 27

PAGE 28

PAGE 37

PAGE 38

PAGE 39

PAGE 40

3 Bodysuit Front, F.H. Cup
Tape to bodice front and cut 1 piece on fold

PAGE 48

PAGE 49

PAGE 50

PAGE 51

3 Bodysuit Front, F.H. Cup
Tape to bodice front and cut 1 piece on fold

PAGE 5

PAGE 6

PAGE 7

PAGE 8

PAGE 9

2 Skirt Back
Tape to bodice back and cut 1 piece on fold

1 Skirt Front, A-D/DD Cup
Tape to bodice front and cut 1 piece on fold

PAGE 17

PAGE 18

PAGE 19

PAGE 20

PAGE 21

PAGE 22

PAGE 23

PAGE 24

PAGE 29

PAGE 30

PAGE 31

PAGE 32

PAGE 33

PAGE 34

PAGE 35

PAGE 36

6 Scoop Neck
Tape to bodice front and cut 1 piece on fold

5 Scoop Neck Top Front, A-D/DD Cup
Tape to bodice front and cut 1 piece on fold

PAGE 10

PAGE 11

PAGE 12

PAGE 22

PAGE 23

PAGE 24

PAGE 34

PAGE 35

PAGE 36

PAGE 45

PAGE 46

PAGE 47

PAGE 56

PAGE 57

PAGE 58

5 Scoop Neck Top Front, F.H. Cup
Tape to bodice front and cut 1 piece on fold