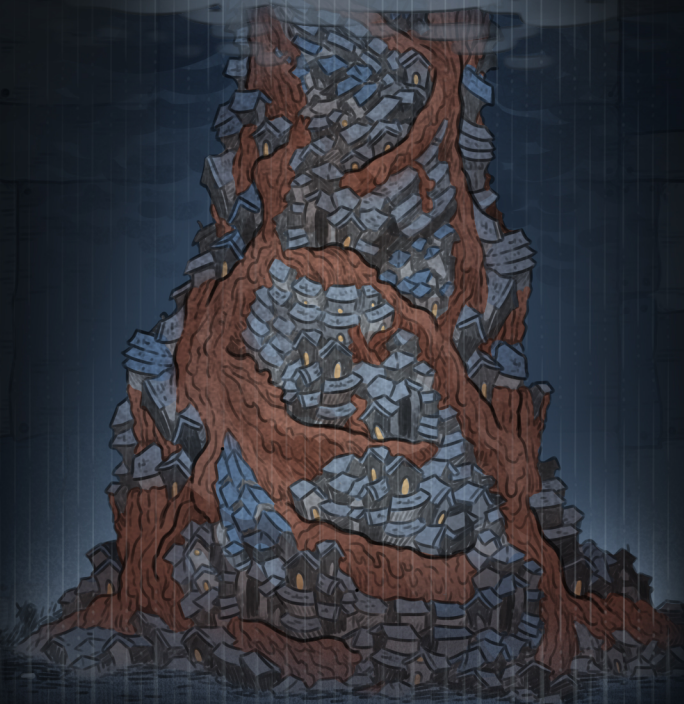


# DISASTER LOG C

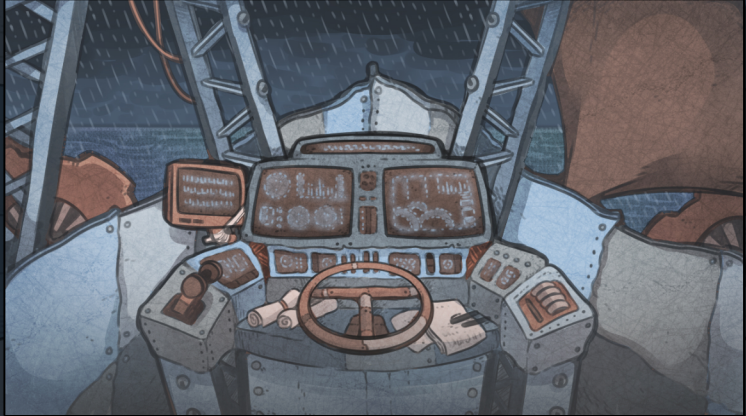
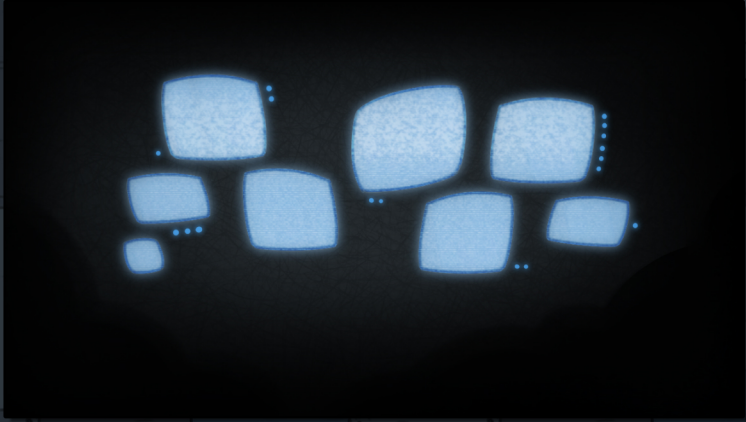
## ART COLLECTION

By SOFDELUX STUDIO

(ILLUSTRATED BY DARKCHIBISHADOW)



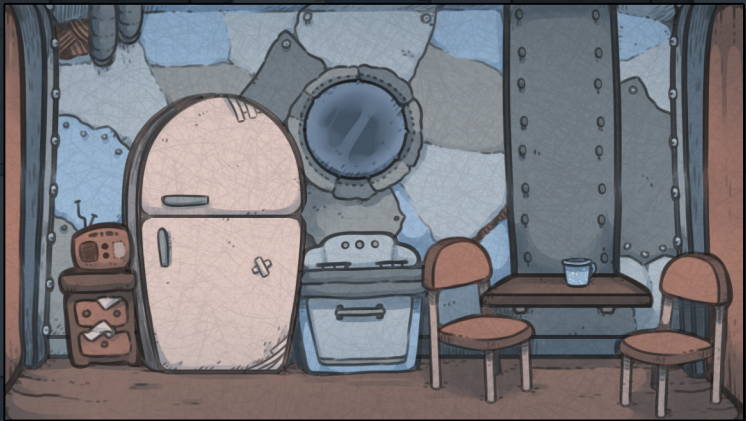
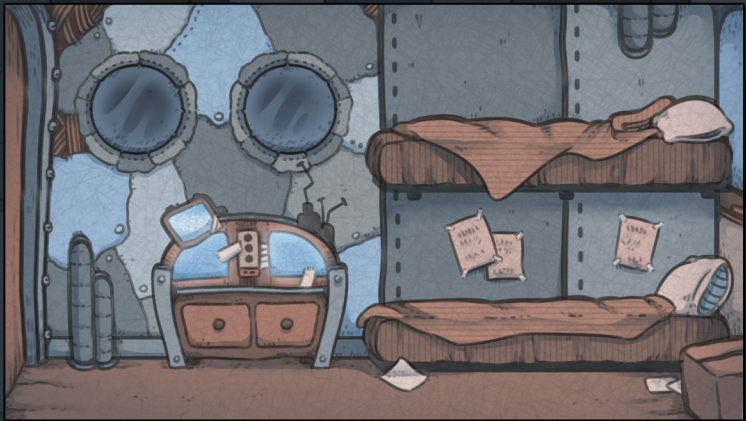
BACKGROUNDS



BACKGROUNDS

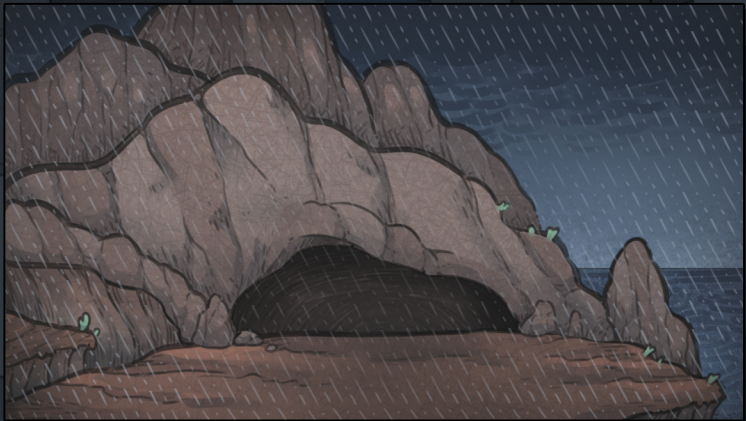
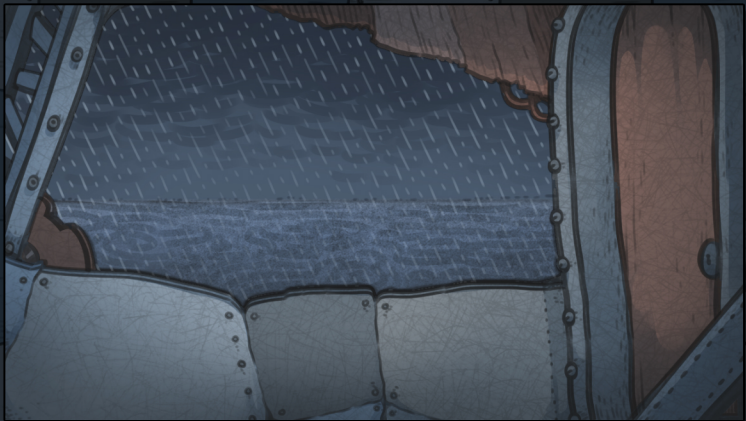
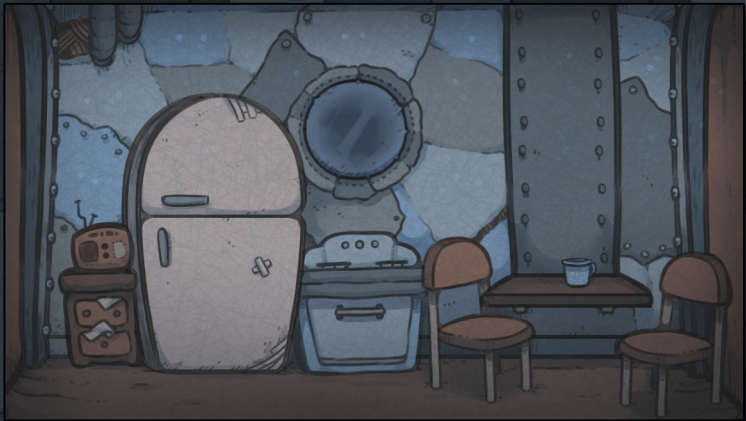


# BACKGROUNDS



# BACKGROUNDS

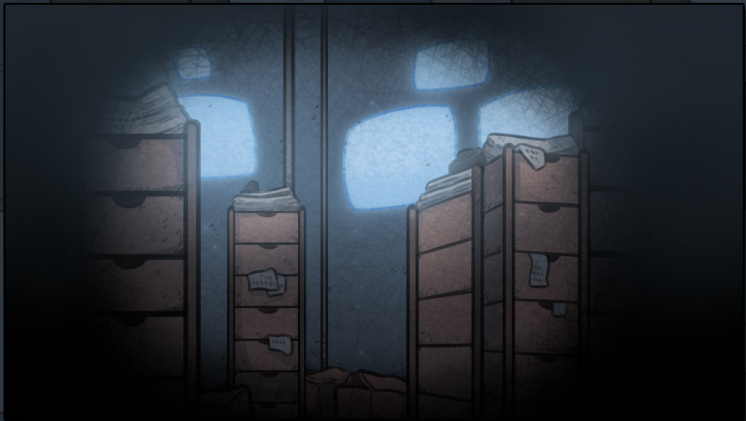
# BACKGROUNDS



# BACKGROUNDS



BACKGROUNDS



BACKGROUNDS



# MELL

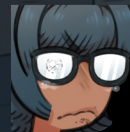
SHE/HER - 27 - ASEXUAL

A SELF-SUFFICIENT GIRL.

SHE WORKED FOR THE WEATHER CENTER,  
MEASURING RAINFALL AND RECORDING DATA  
UNTIL THE DISASTER HIT. SHE HAS NO  
CLOSE FRIENDS OR FAMILY, OTHER THAN  
HER PRECIOUS STUFFED ANIMAL, BEAREID.

\*TRIVIA CORNER!\*

BEAREID IS NAMED AFTER NEREIDS, WHICH ARE  
FRIENDLY SEA NYMPHS FROM GREEK MYTHOLOGY.



# ISSA

SHE/HER - 24 - LESBIAN

A FORMER PIRATE WHO  
DOES HER BEST TO  
SURVIVE WHILE ALSO  
HAVING FUN.

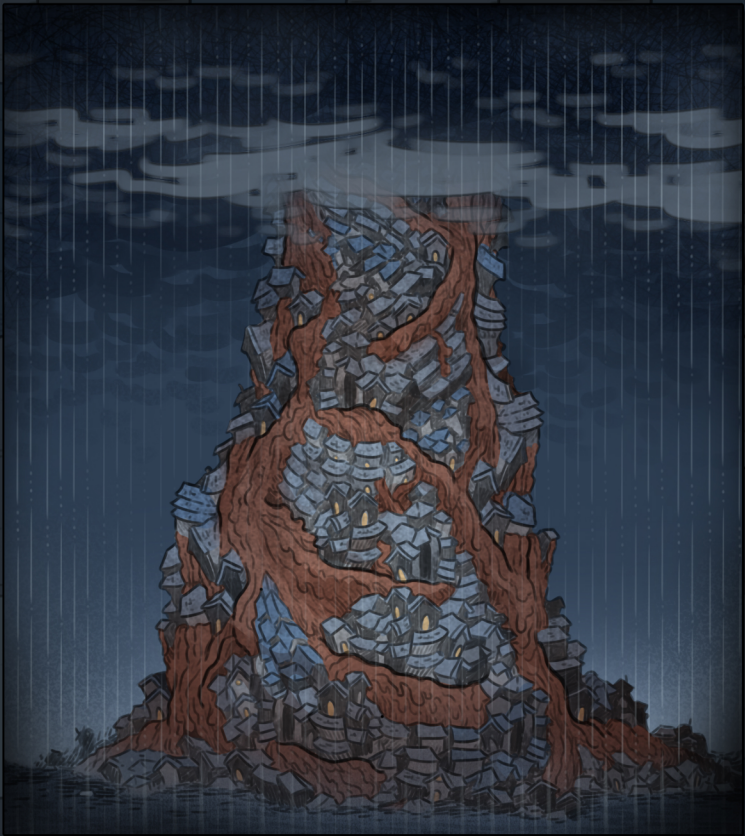
IN HER EFFORT TO  
ESCAPE THE FLOODS,  
SHE ENDS UP TAKING  
OVER MELL'S BOAT.

\*TRIMA CORNER!\*

HER KNIFE IS ACTUALLY A  
SPECIAL FISHING KNIFE.



ILLUSTRATIONS



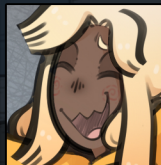
ILLUSTRATIONS



ILLUSTRATIONS



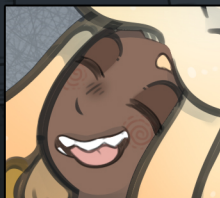
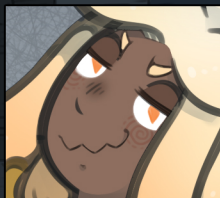
ILLUSTRATIONS



ILLUSTRATIONS

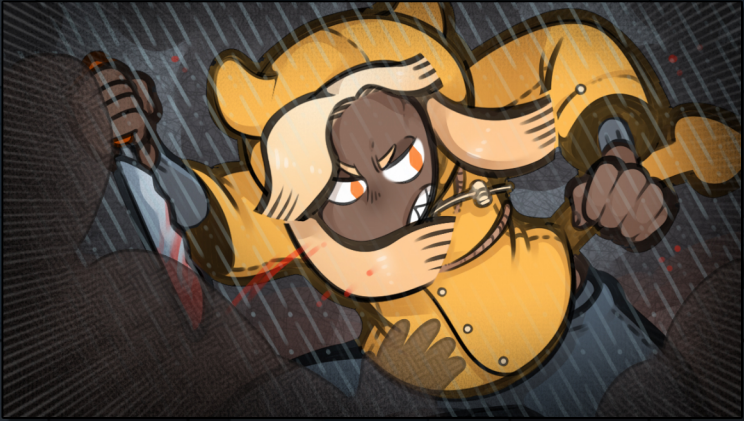


ILLUSTRATIONS



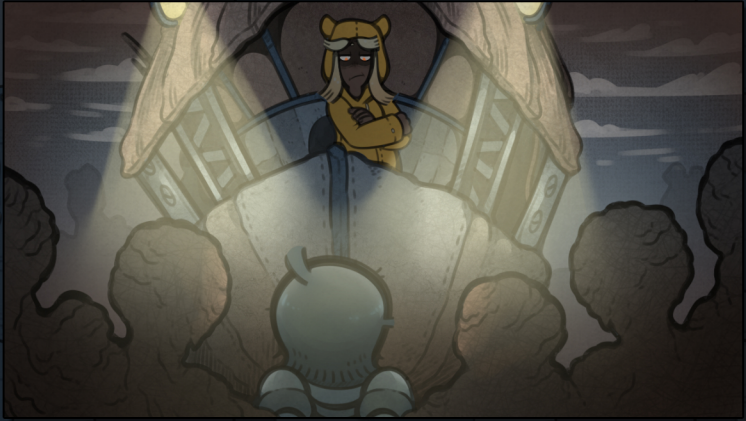
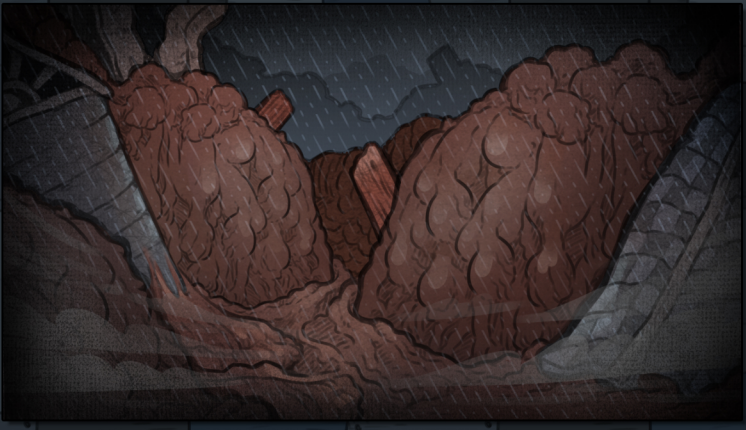


ILLUSTRATIONS



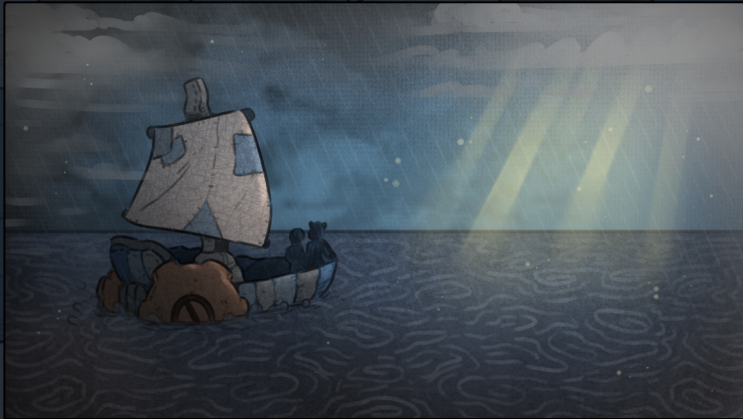
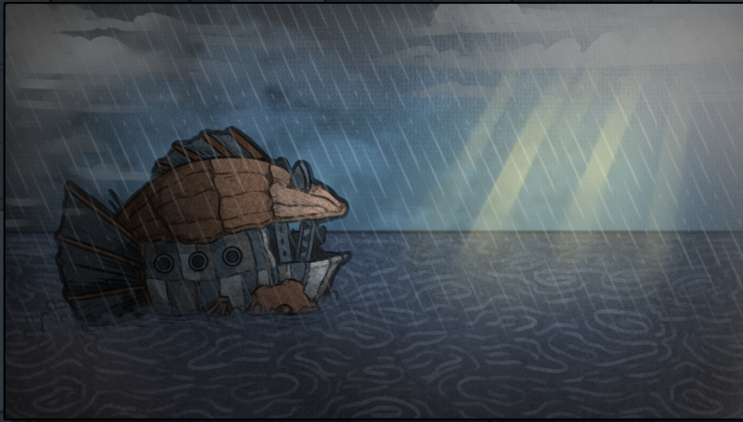
ILLUSTRATIONS

ILLUSTRATIONS



ILLUSTRATIONS

ILLUSTRATIONS



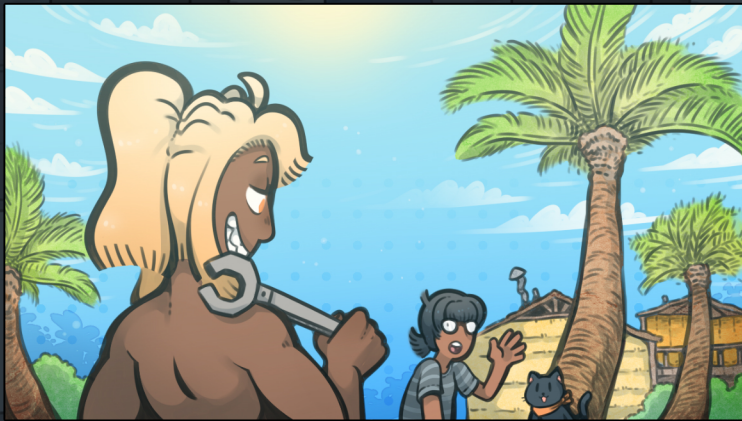
Hey, it's DCS!

IT WAS AMAZING TO GET TO DRAW THIS GAME FOR NAMI AND I'M STILL SO HONORED SHE LET ME HELP OUT! I'M VERY HAPPY WITH THE FINAL RESULT-- PLUS, IT WAS A TON OF FUN TO WORK ON. IT'S NICE TO MAKE A GAME THAT REALLY FEELS LIKE IT HAS ITS OWN VIBE AND VISUAL QUIRKS... <3

ILLUSTRATIONS



ILLUSTRATIONS



ILLUSTRATIONS



HELLO, NAMI HERE!

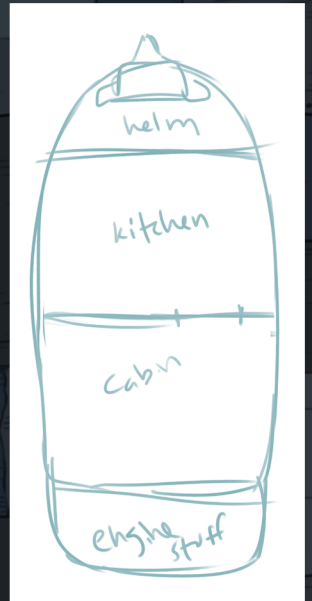
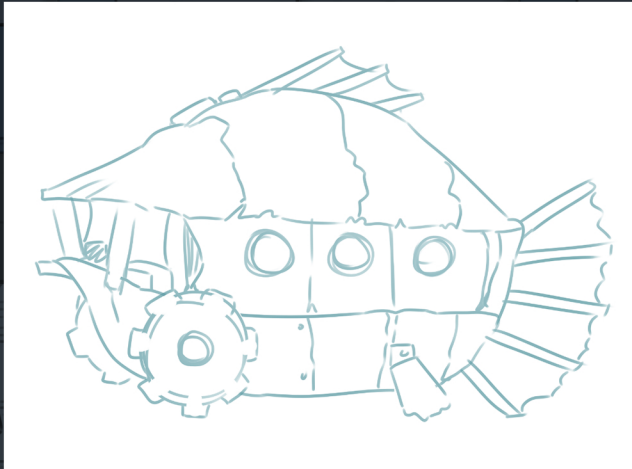
WHEN I FIRST GOT THE IDEA FOR THIS STORY I DECIDED IT WOULD BE A NICE SHORT PROJECT TO DO FOR THE NEXT YURI GAME JAM. I ASKED DCS TO DO THE ART FOR THIS ONE SINCE I FELT THEIR STYLE WOULD REALLY ADD A LOT TO THIS WORLD, AND OF COURSE BECAUSE IT'D LET ME FOCUS ON THE WRITING/CODE AND EASE MY WORKLOAD A BIT, HAHA. I'M REALLY HAPPY WITH HOW IT TURNED OUT!! I FEEL LIKE I NEVER COULD'VE GOTTEN THE SAME FEELING IF I TRIED TO DRAW EVERYTHING MYSELF. THE GAME WOULDN'T HAVE GOTTEN FINISHED IN TIME EITHER... LOL. THANKS SO MUCH, DCS!!! <3



# CONCEPT ART



Hey hey! It's DCS!  
These are my first drawings  
of everything. I was pleased  
right away with Issa's design  
and knew she would be the  
star of the game visually!  
Also, fish boat!



ALBUM ART



GAME ICON



THANK YOU FOR SUPPORTING DISASTER LOG C!

DCS AND I APPRECIATE IT SO MUCH ;0;

THIS IS OUR SECOND GAME WE'VE RELEASED AS SOFDELUX STUDIO...

WE ACTUALLY HAVE HAD OTHER IDEAS WE WERE MEANING TO DO BEFORE THIS ONE, BUT BECAUSE I WANTED TO MAKE SOMETHING FOR YURI GAME JAM, THIS THING ENDED UP HAPPENING, HAHA!

I'M REALLY PROUD OF HOW THIS PROJECT TURNED OUT.

I LOVE STORIES THAT CAN GET REALLY DIRE BUT THE CHARACTERS CAN STILL MAKE IT OUT OKAY BECAUSE THEY HAVE EACH OTHER...

AFTER I FINISHED PUTTING THE TRUE END CREDITS TOGETHER,

I JUST KEPT WATCHING IT AND GETTING TEARY-EYED...!

I KNOW I WROTE IT THIS WAY BUT... I'M JUST SO GLAD

MELL AND ISSA GET TO BE SO HAPPY TOGETHER...

THANKS AGAIN FOR PLAYING OUR GAME!

WE HOPE YOU LOOK FORWARD TO MORE OF OUR STUFF IN THE FUTURE!

-NAMI