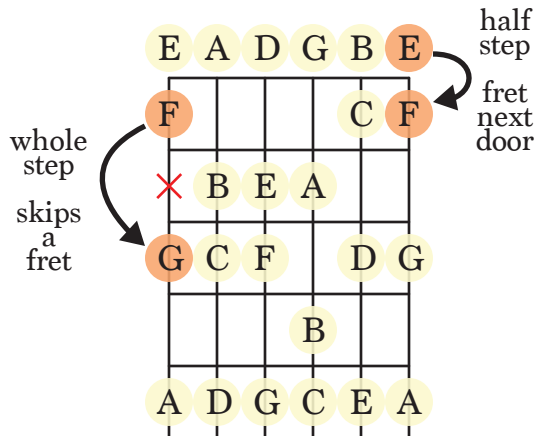
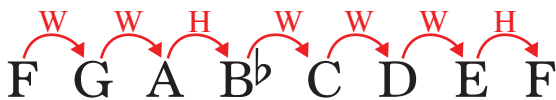


REVIEW

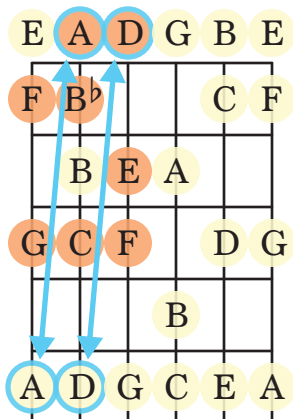
1 Whole steps and half steps are the basic building blocks of music.



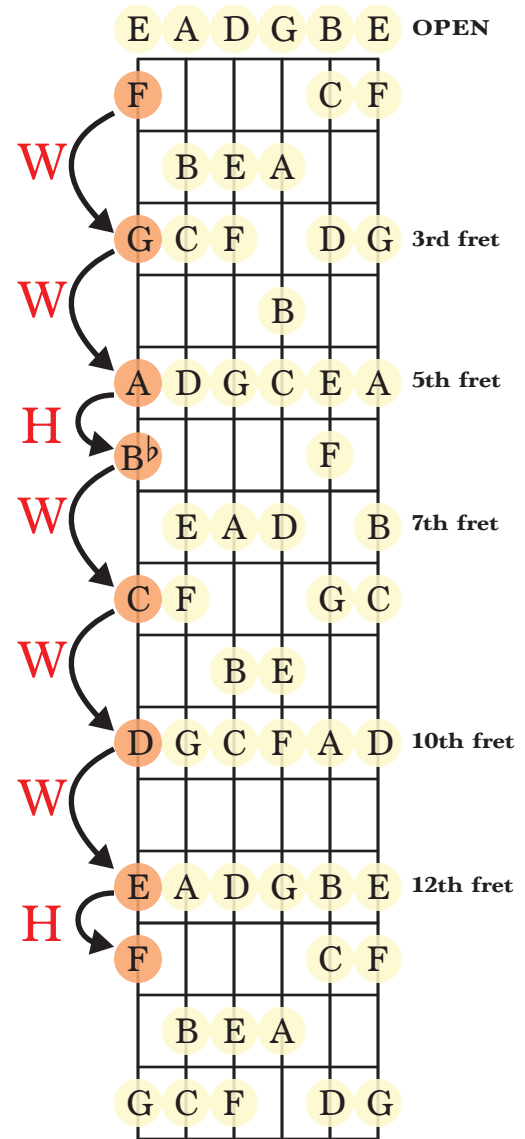
F Major Scale



3 On guitar, the major scale can be collapsed to cover more strings



2 **W****W****H****W****W****W****H** is the Major Scale Formula



On guitar, there are multiple locations for most notes. This allows the scale to be shared over multiple strings, allowing the hand to stay in the same position. The notes in blue to the left are examples of duplicate notes shared by two strings.

HOMEWORK

Finish these Major Scales:

example: D W E W F H G W A W B W C H D

1. Write out the rest of the notes in alphabetical order (written in blue)
2. Add sharps or flats to conform the scale to the formula (written in green)

F W__ W__ H__ W__ W__ W__ H__

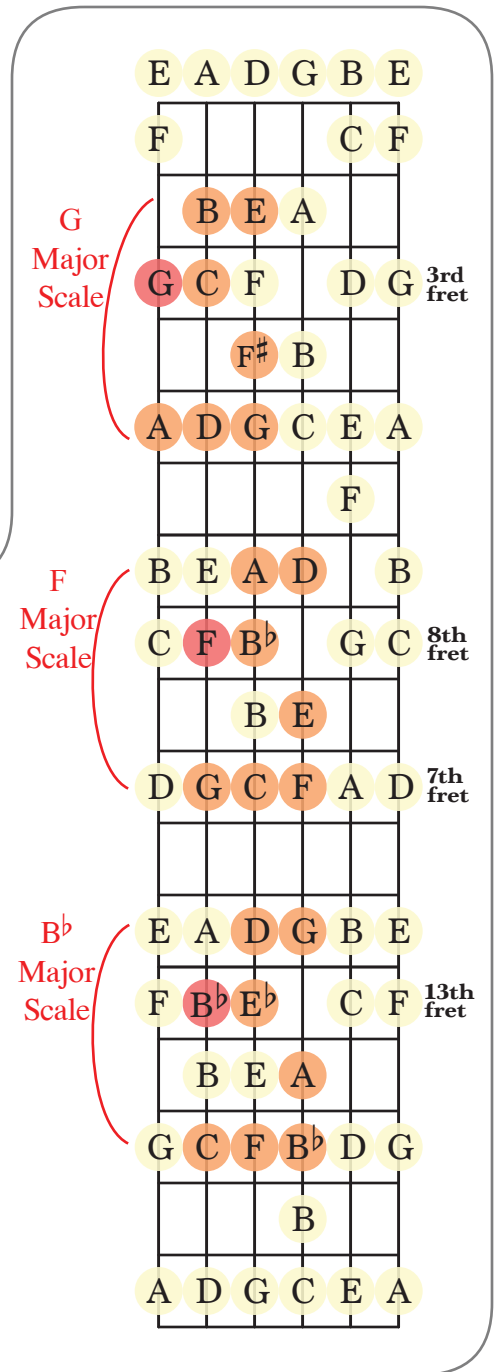
G W__ W__ H__ W__ W__ W__ H__

A W__ W__ H__ W__ W__ W__ H__

B^b W__ W__ H__ W__ W__ W__ H__

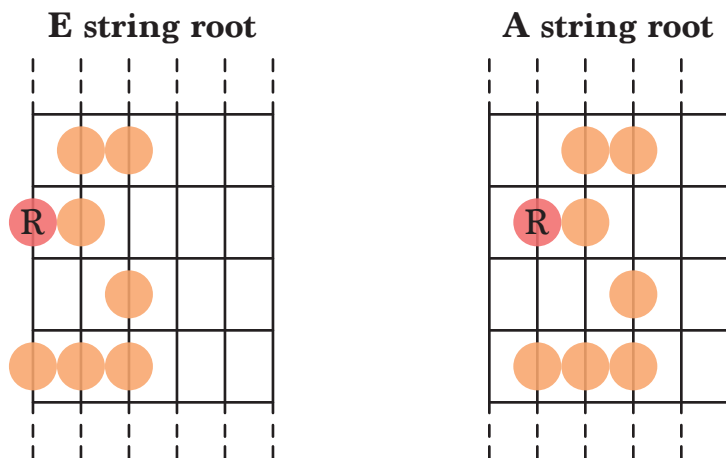
D W__ W__ H__ W__ W__ W__ H__

*For more practice, check out the attached Major Scale Scratch Paper



On guitar, the major scale makes predictable shapes, meaning that you can build major scales knowing only the root note. Here is a Major Scale shape that works with the root on the E string and the A string. There are more moveable shapes on the next page.

Try playing the scales you just made by finding the root note on the E or A string - see the examples to the right →



PRACTICE

Practice playing a C Major scale in various positions up and down the neck.

In the play along video, each scale will be played twice followed by two measures to prepare for the next scale

				prepare-for	the-next-scale
1 + 2 + 3 + 4 +	1 + 2 + 3 + 4 +	1 + 2 + 3 + 4 +	1 + 2 + 3 + 4 +	1 + 2 + 3 + 4 +	1 + 2 + 3 + 4 +

OPEN C shape C scale

1 + 2 + 3 + 4 + 1 + 2 + 3 + 4 +

A shape C scale

1 + 2 + 3 + 4 + 1 + 2 + 3 + 4 +

G shape C scale

1 + 2 + 3 + 4 + 1 + 2 + 3 + 4 +

E shape C scale

1 + 2 + 3 + 4 + 1 + 2 + 3 + 4 +

D shape C scale

1 + 2 + 3 + 4 + 1 + 2 + 3 + 4 +

MAJOR SCALE SCRATCH PAPER



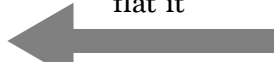
b

push a note
one half step
this way to
flat it



#

push a note
one half step
this way to
sharp it



For now, focus on making scales that start with natural notes (for example: start with C, D, E etc. and don't start with B^b, G[#], etc) - we'll cover those scales in the lesson about the circle of fifths

__ W __ W __ H __ W __ W __ W __ H __

__ W __ W __ H __ W __ W __ W __ H __

__ W __ W __ H __ W __ W __ W __ H __

__ W __ W __ H __ W __ W __ W __ H __

__ W __ W __ H __ W __ W __ W __ H __

__ W __ W __ H __ W __ W __ W __ H __

__ W __ W __ H __ W __ W __ W __ H __

__ W __ W __ H __ W __ W __ W __ H __

__ W __ W __ H __ W __ W __ W __ H __

__ W __ W __ H __ W __ W __ W __ H __

__ W __ W __ H __ W __ W __ W __ H __

__ W __ W __ H __ W __ W __ W __ H __

__ W __ W __ H __ W __ W __ W __ H __

__ W __ W __ H __ W __ W __ W __ H __

__ W __ W __ H __ W __ W __ W __ H __

__ W __ W __ H __ W __ W __ W __ H __

__ W __ W __ H __ W __ W __ W __ H __

__ W __ W __ H __ W __ W __ W __ H __

__ W __ W __ H __ W __ W __ W __ H __

__ W __ W __ H __ W __ W __ W __ H __

__ W __ W __ H __ W __ W __ W __ H __

__ W __ W __ H __ W __ W __ W __ H __