



# Mariner Top

Sizes 2-20  
with cup sizes A-H

5/8 inch (1.5 cm) seam allowances  
are included on all pattern pieces.

Page 1 of 5

### PAGE 1 PATTERN PIECES

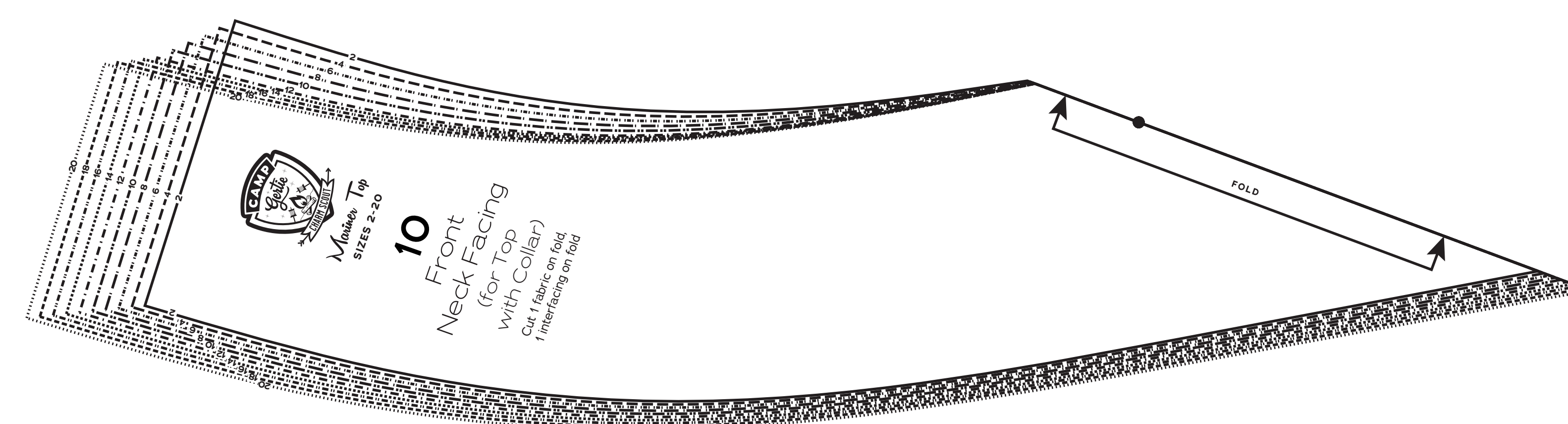
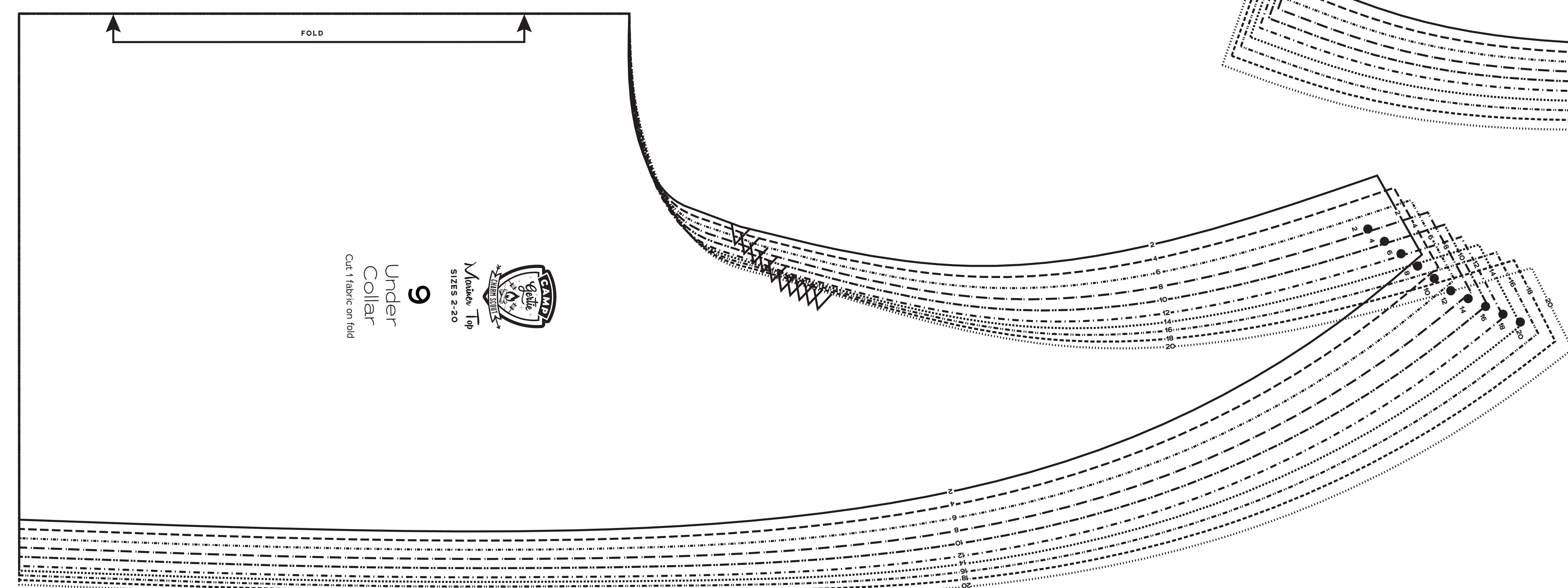
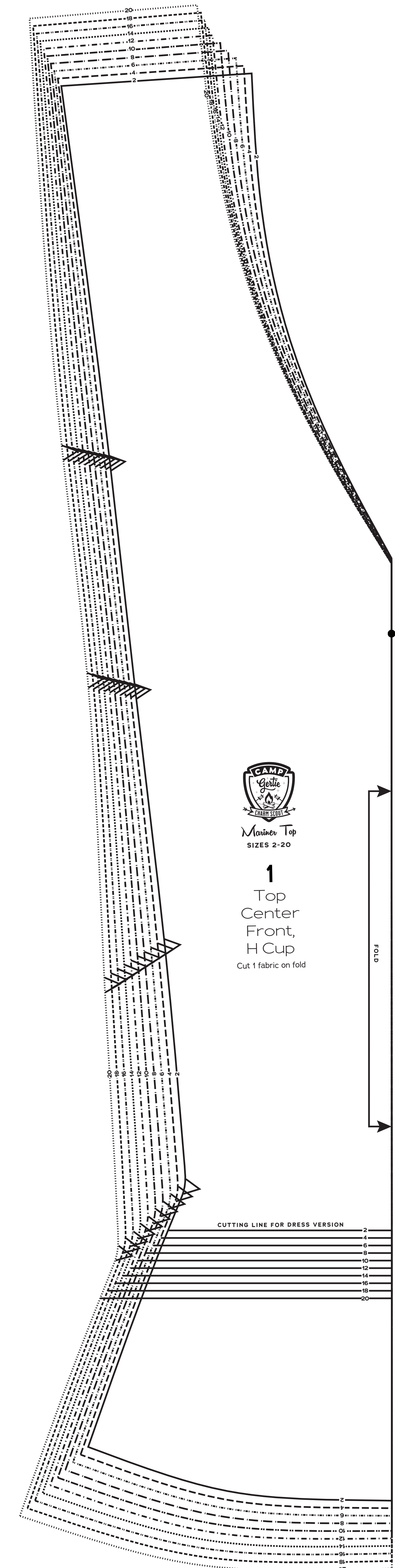
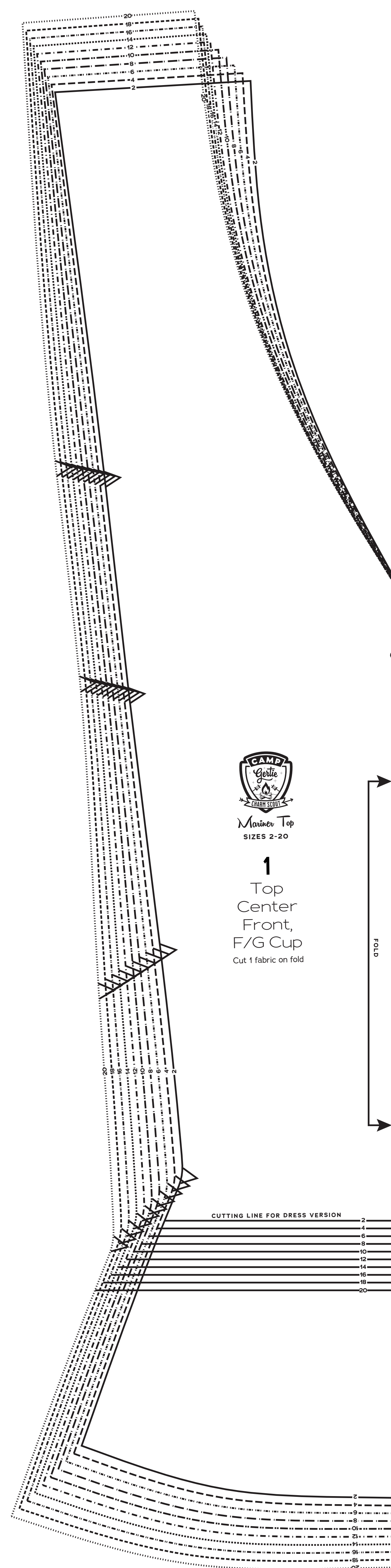
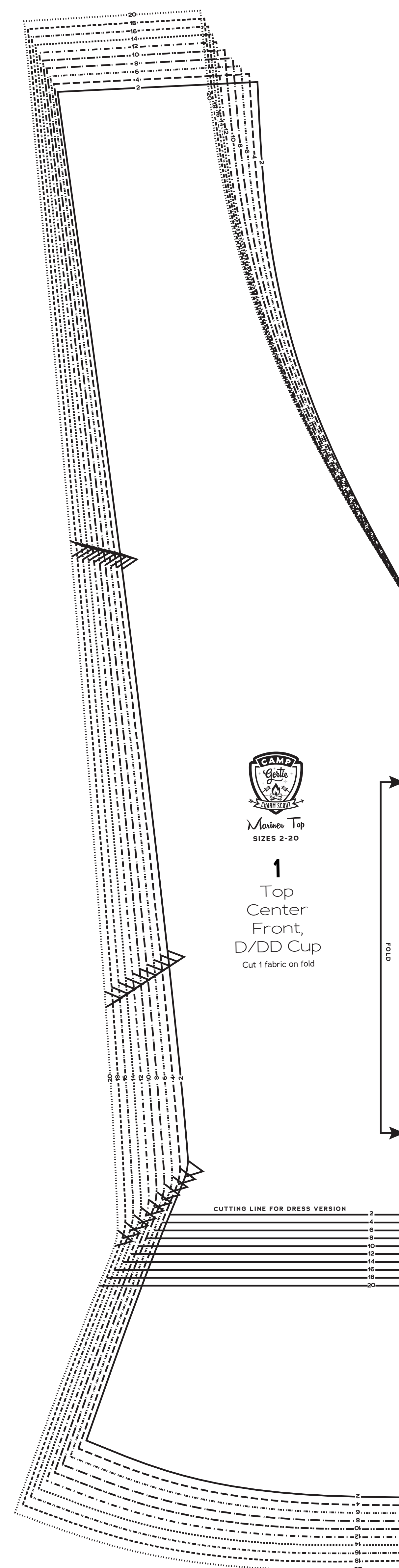
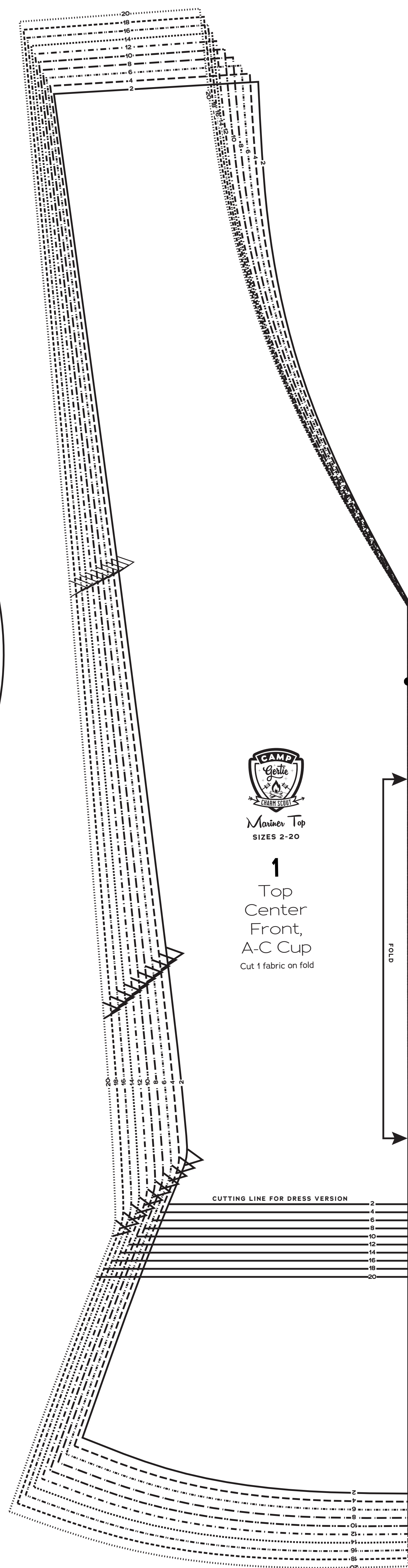
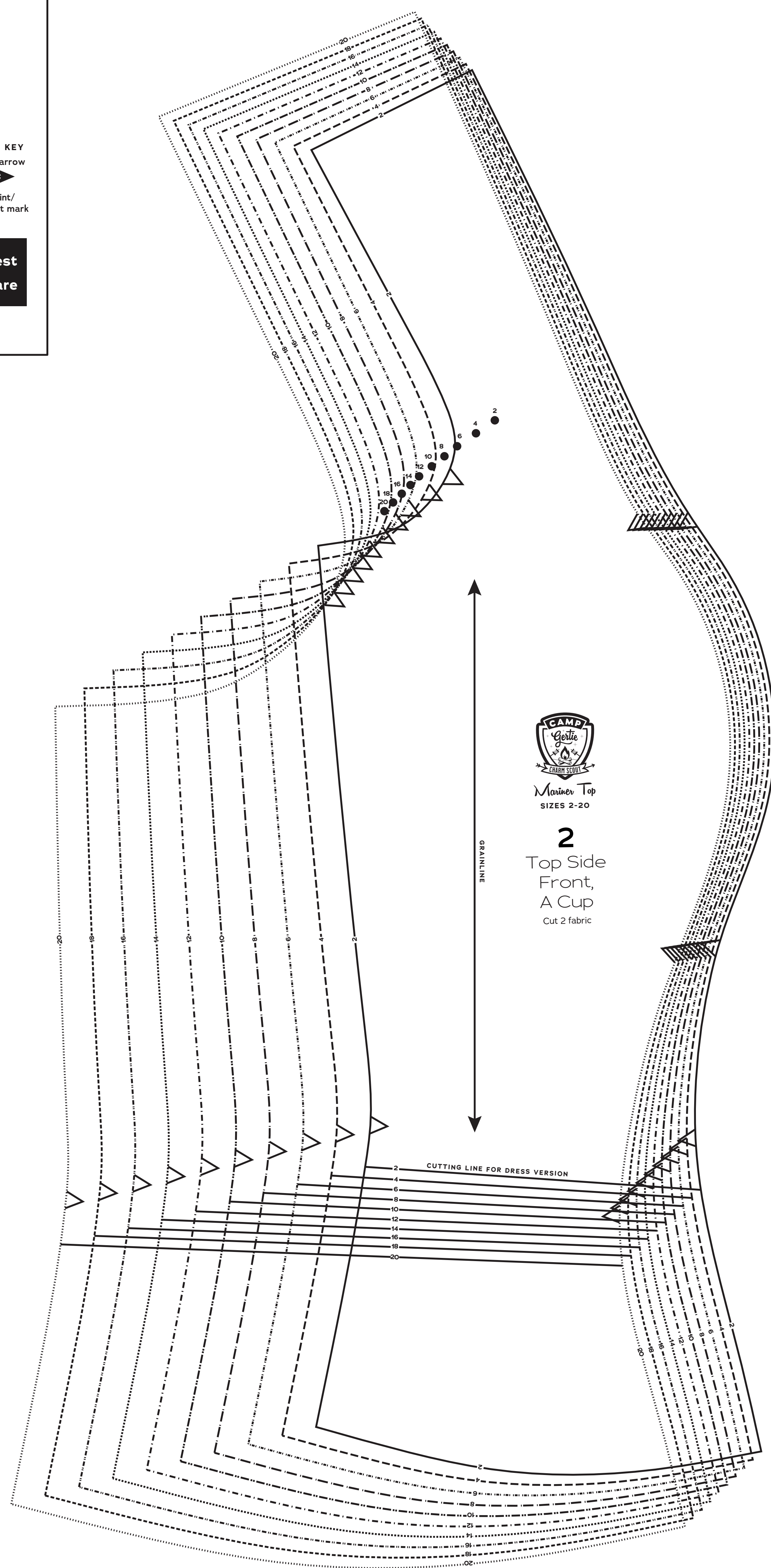
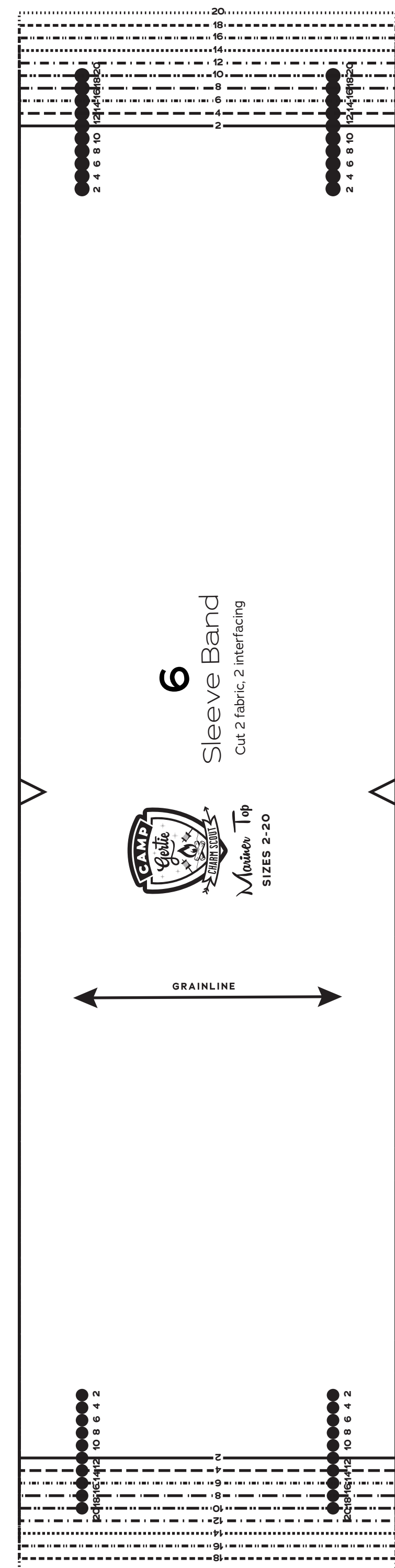
- 1 Top Center Front, A-C Cup
- 1 Top Center Front, D/DD Cup
- 1 Top Center Front, F/G Cup
- 1 Top Center Front, H Cup
- 2 Top Side Front, A Cup
- 6 Sleeve Band
- 9 Under Collar
- 10 Front Neck Facing

**PATTERN SIZE KEY**

2	-----
4	-----
6	-----
8	-----
10	-----
12	-----
14	-----
16	-----
18	-----
20	-----

**SYMBOL KEY**

	grainline arrow
	match point/ placement mark
	1" test square





# Mariner Top

Sizes 2-20  
with cup sizes A-H

5/8 inch (1.5 cm) seam allowances  
are included on all pattern pieces.

Page 2 of 5

### PAGE 2 PATTERN PIECES

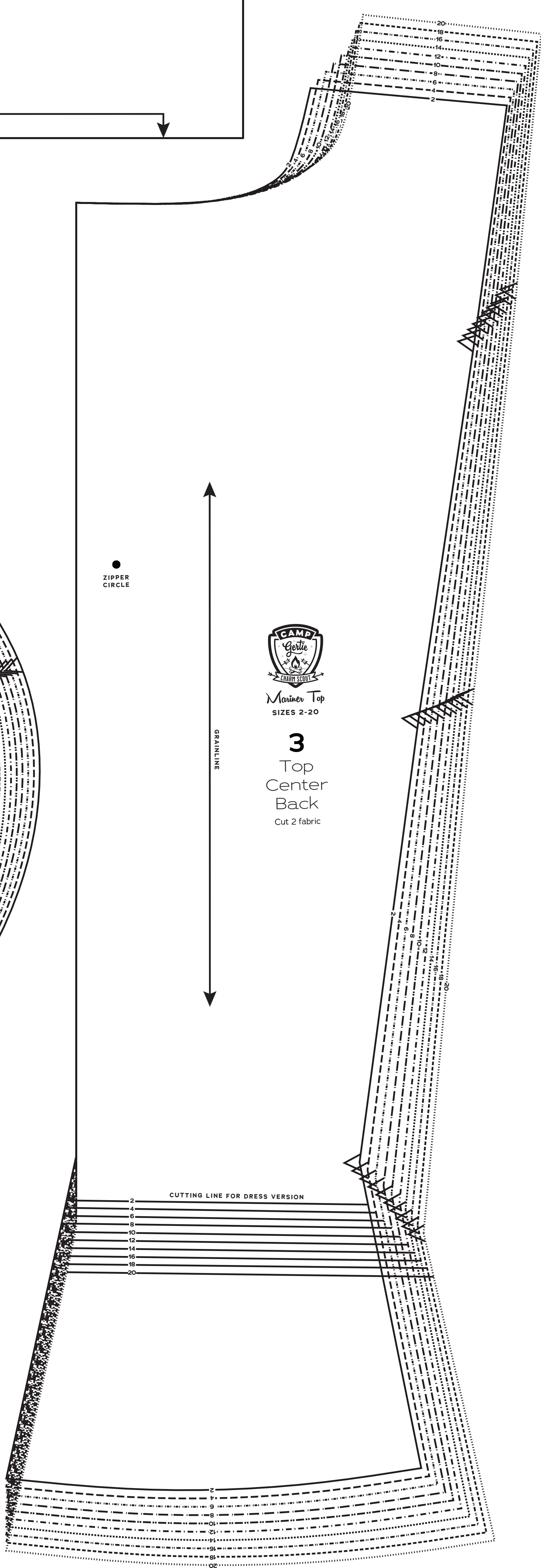
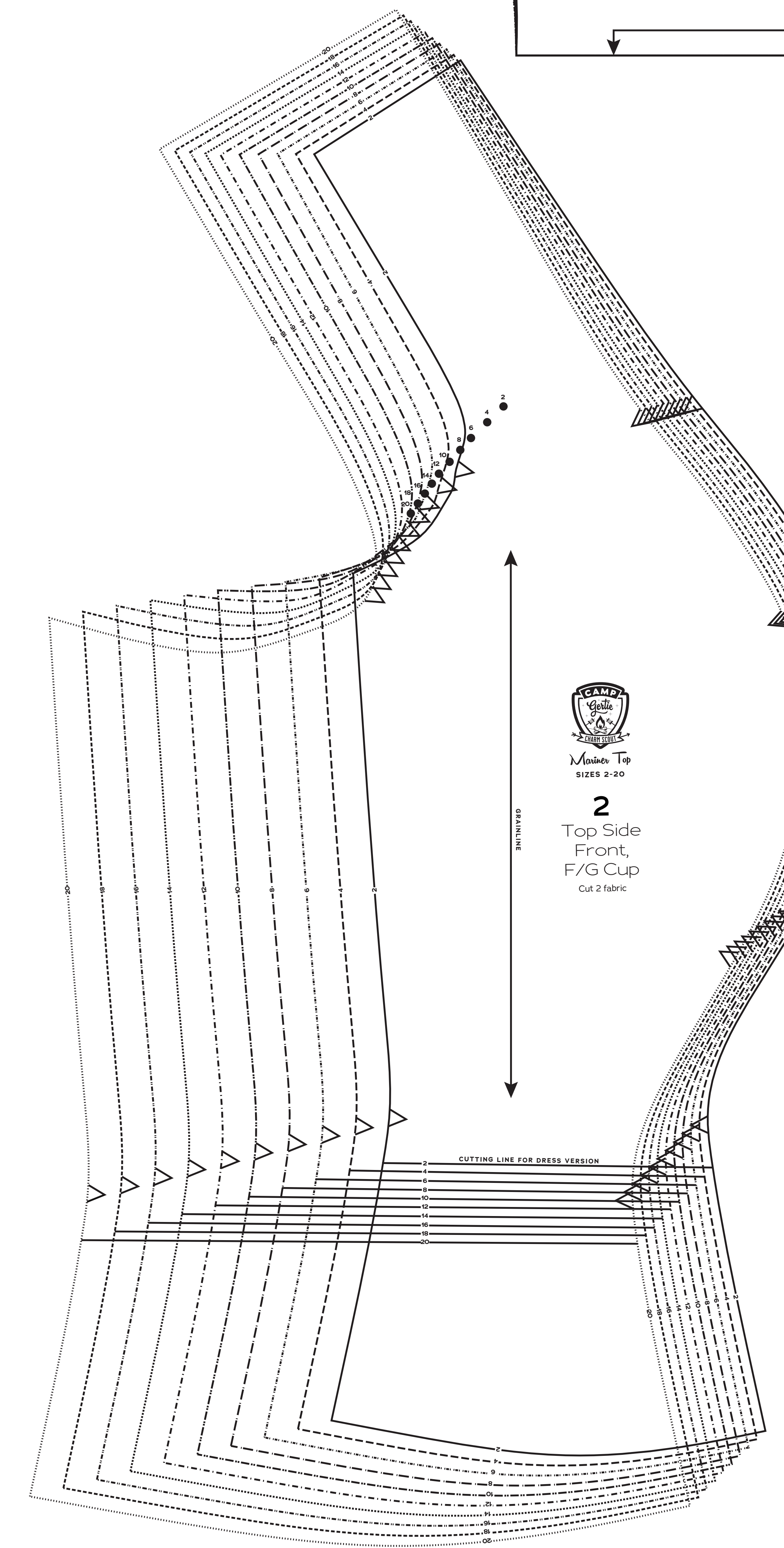
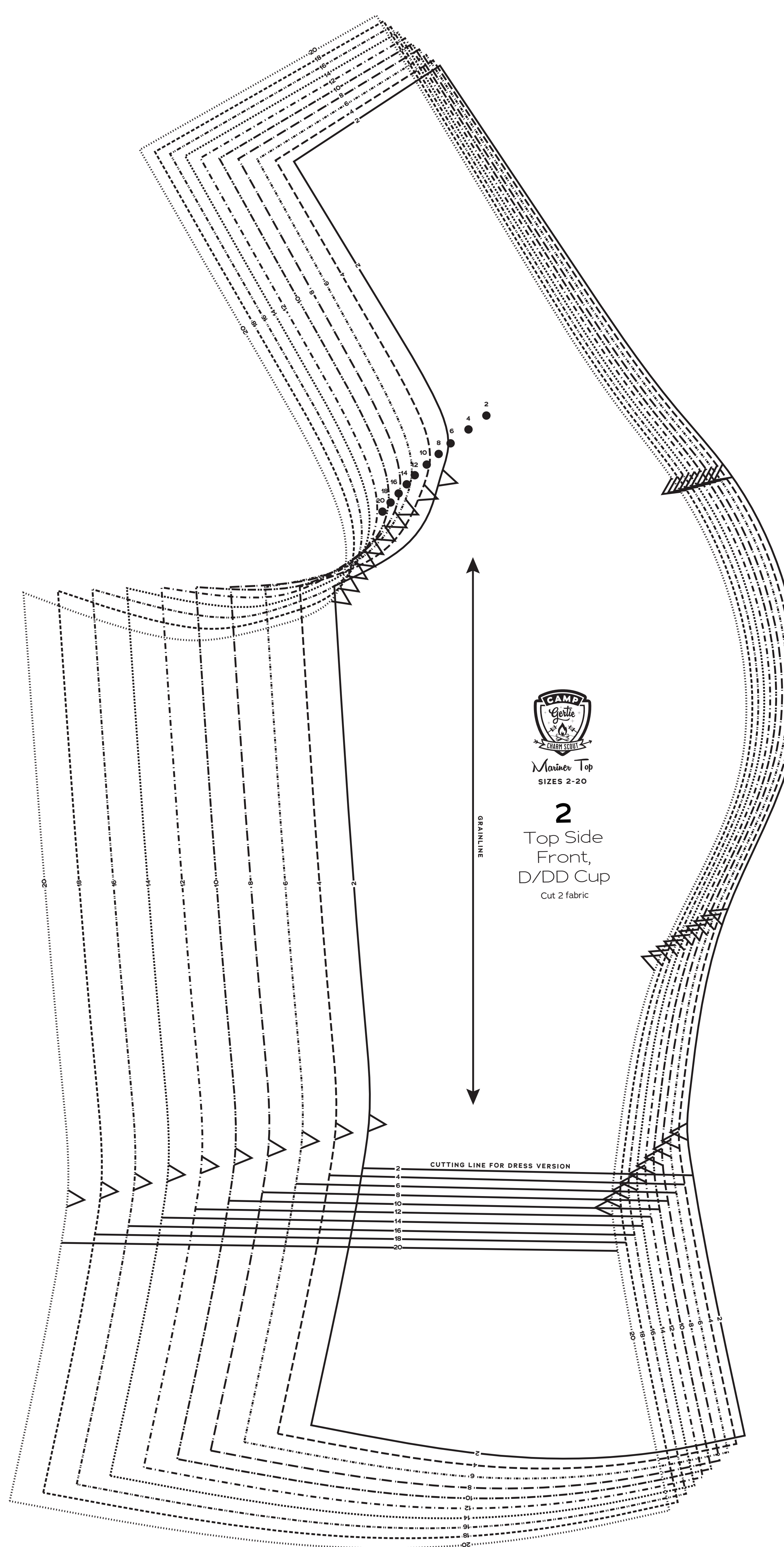
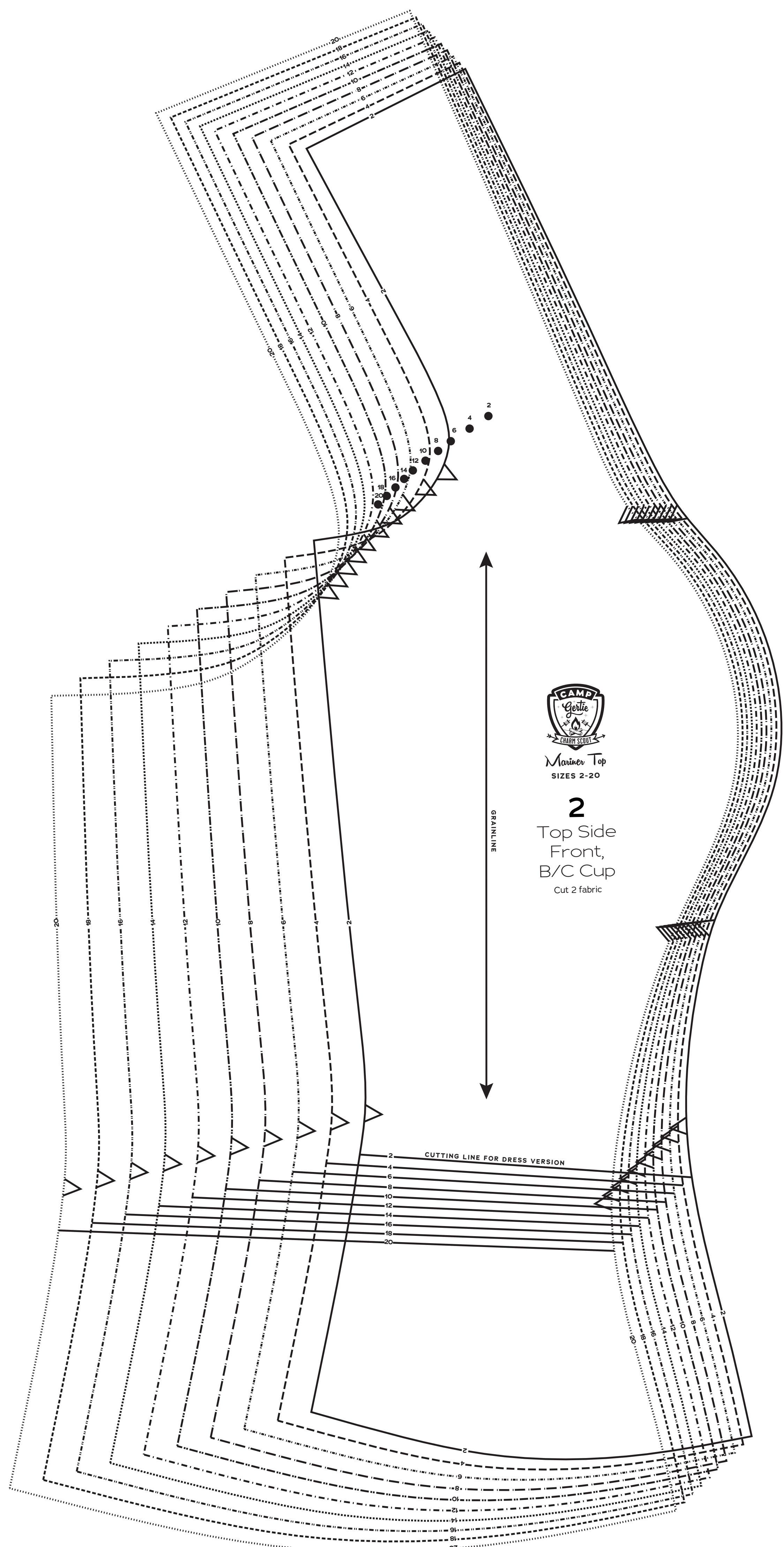
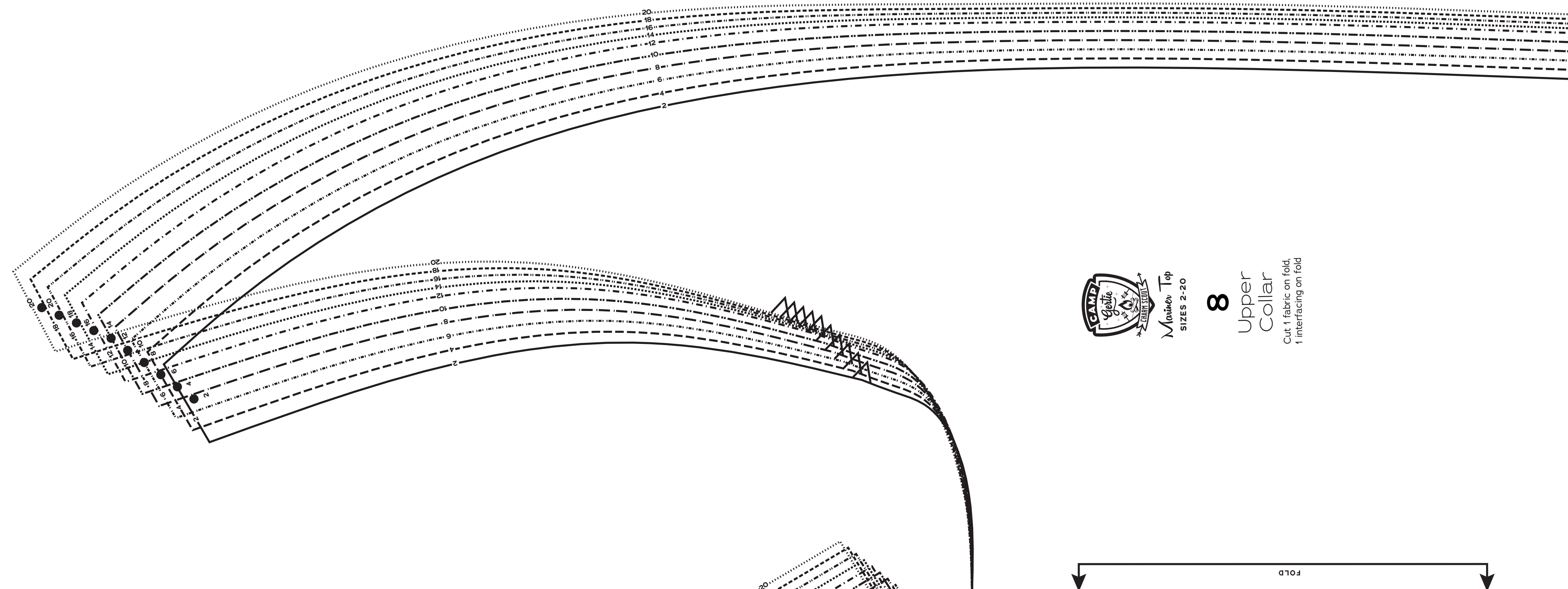
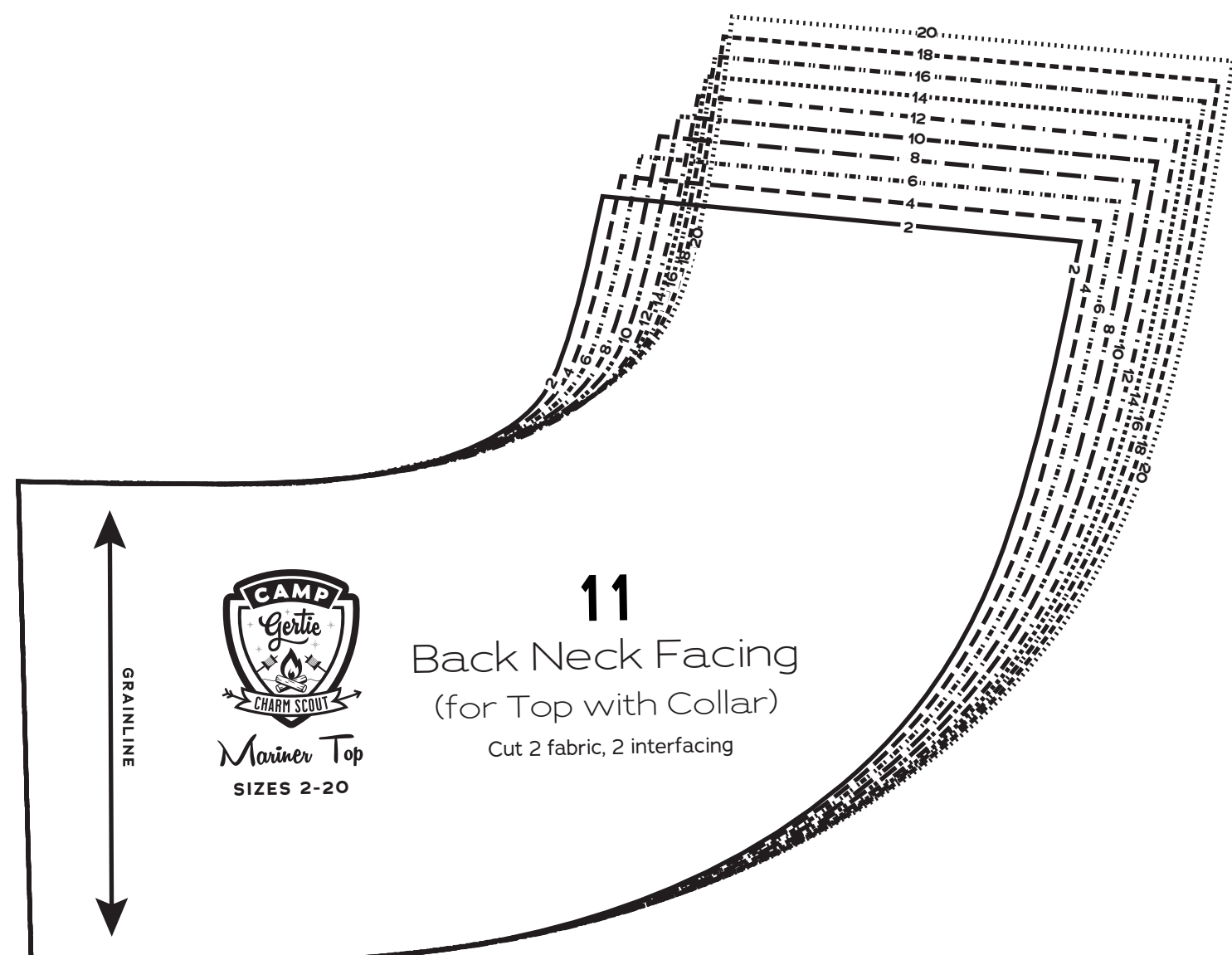
- 2 Top Side Front, B/C Cup
- 2 Top Side Front, D/DD Cup
- 2 Top Side Front, F/G Cup
- 3 Top Center Back
- 8 Upper Collar
- 11 Back Neck Facing

### PATTERN SIZE KEY

- 2 —————
- 4 - - - - -
- 6 - - - - -
- 8 - - - - -
- 10 - - - - -
- 12 - - - - -
- 14 - - - - -
- 16 - - - - -
- 18 - - - - -
- 20 - - - - -

### SYMBOL KEY

- ▶ grainline arrow
- ◀ match point/  
placement mark
- 1" test  
square





# Mariner Top

Sizes 2-20  
with cup sizes A-H

5/8 inch (1.5 cm) seam allowances  
are included on all pattern pieces.

Page 3 of 5

### PAGE 3 PATTERN PIECES

- 2 Top Side Front, H Cup
- 4 Top Side Back
- 14 Knot Tie
- 15 Gigantic Bow
- 17 Gigantic Bow Knot

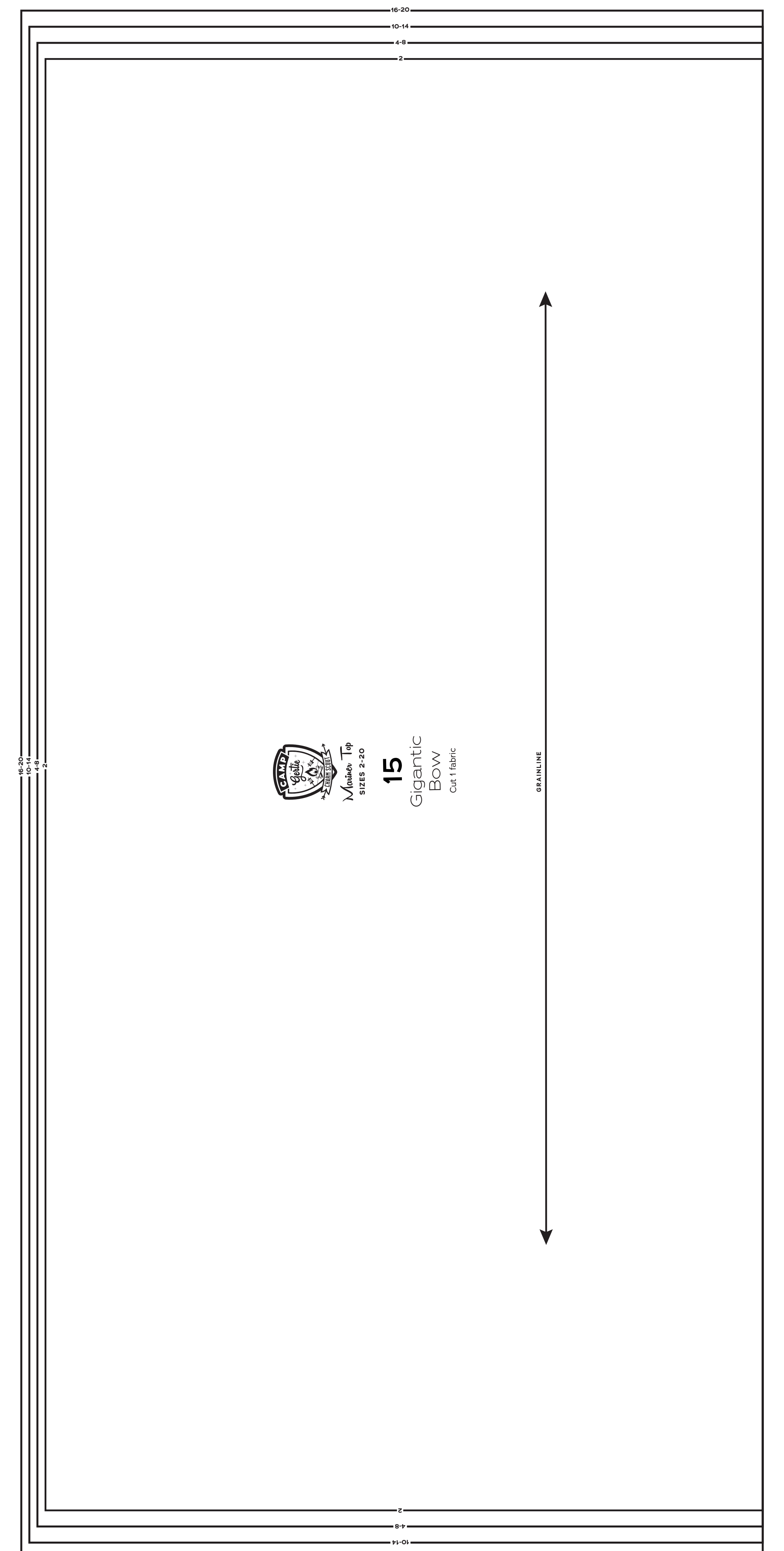
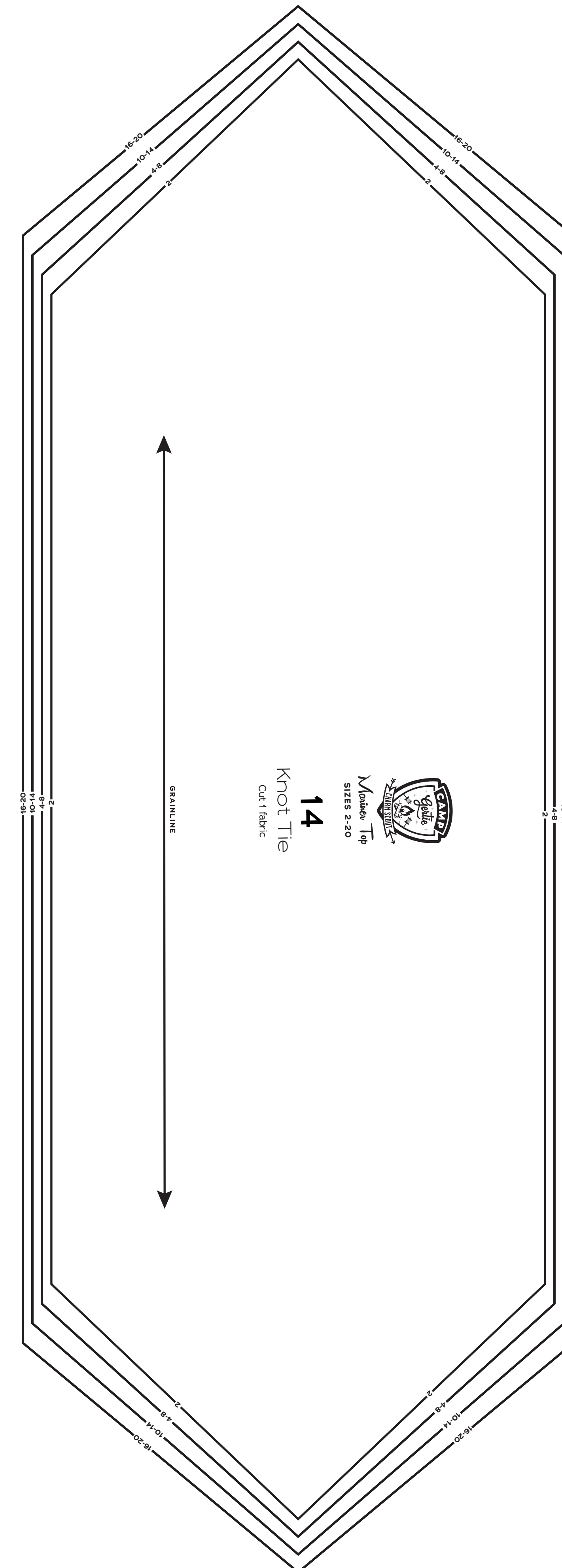
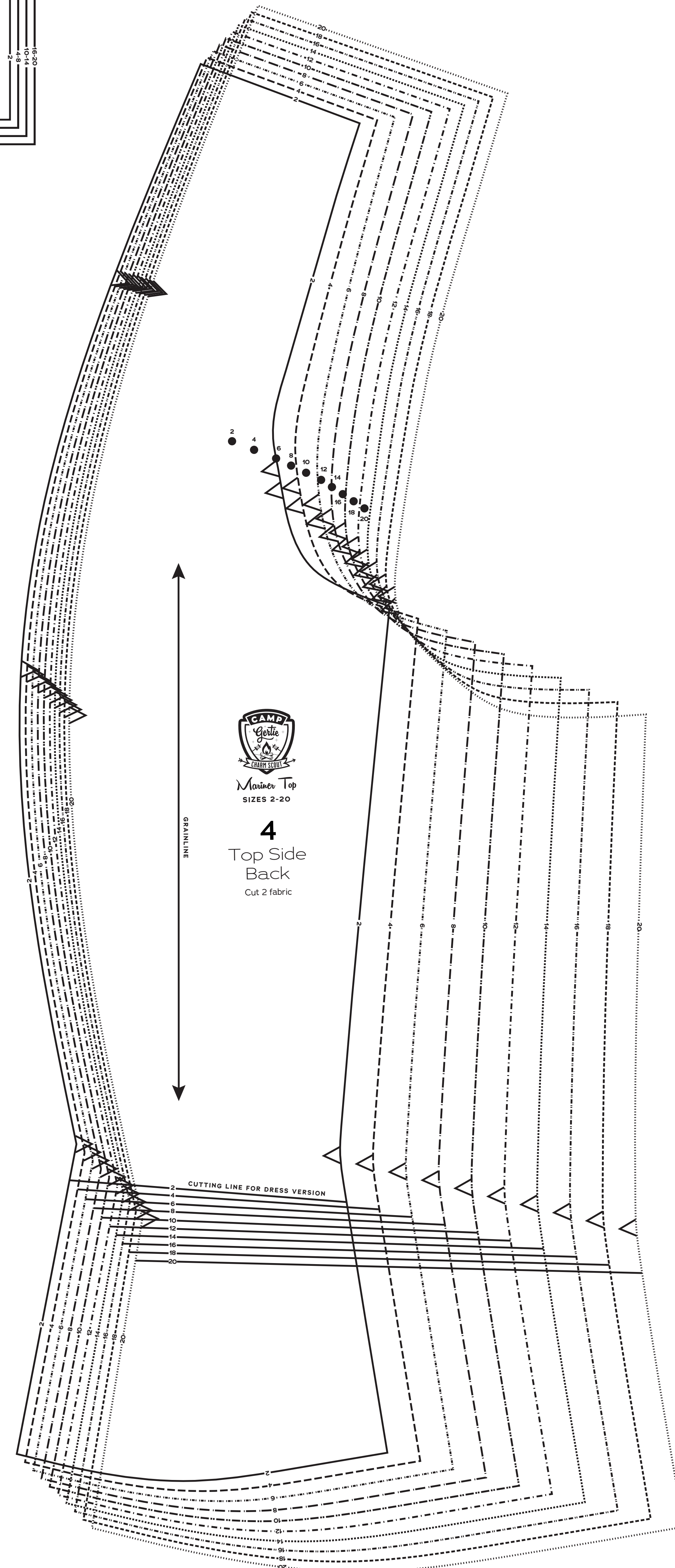
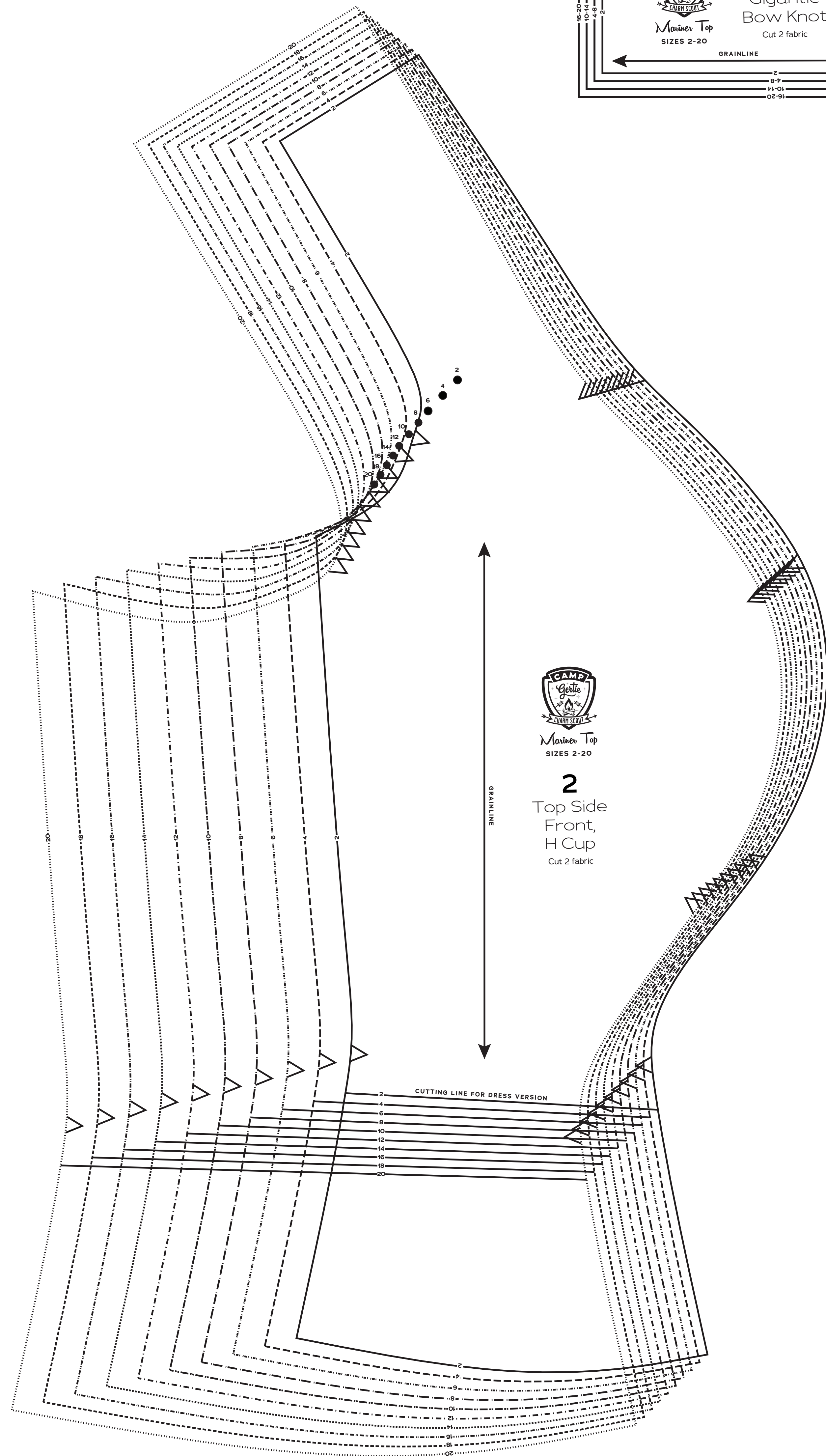
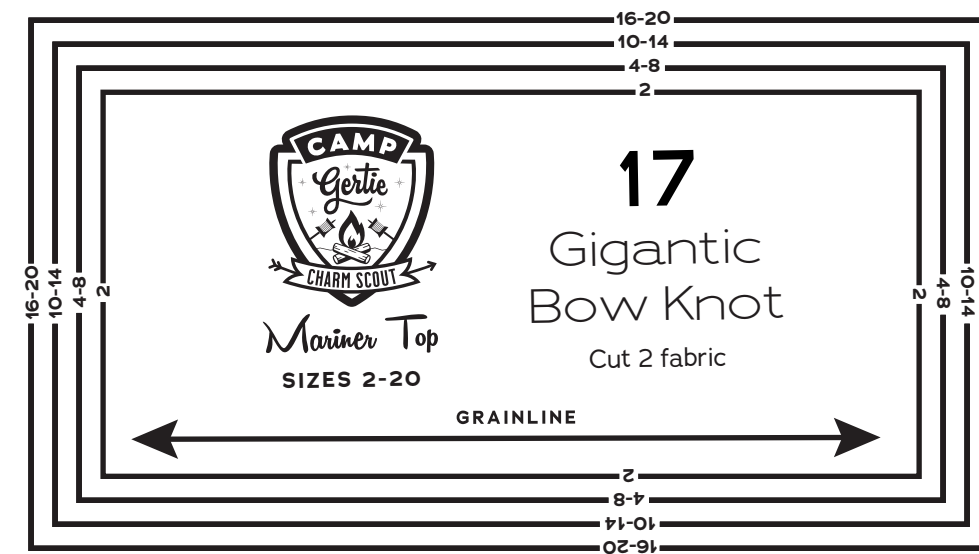
**PATTERN SIZE KEY**

2	-----
4	-----
6	-----
8	-----
10	-----
12	-----
14	-----
16	-----
18	-----
20	-----

**SYMBOL KEY**

- grainline arrow
- match point/  
placement mark

1" test  
square





# Mariner Top

Sizes 2-20  
with cup sizes A-H

5/8 inch (1.5 cm) seam allowances  
are included on all pattern pieces.

Page 4 of 5

### PAGE 4 PATTERN PIECES

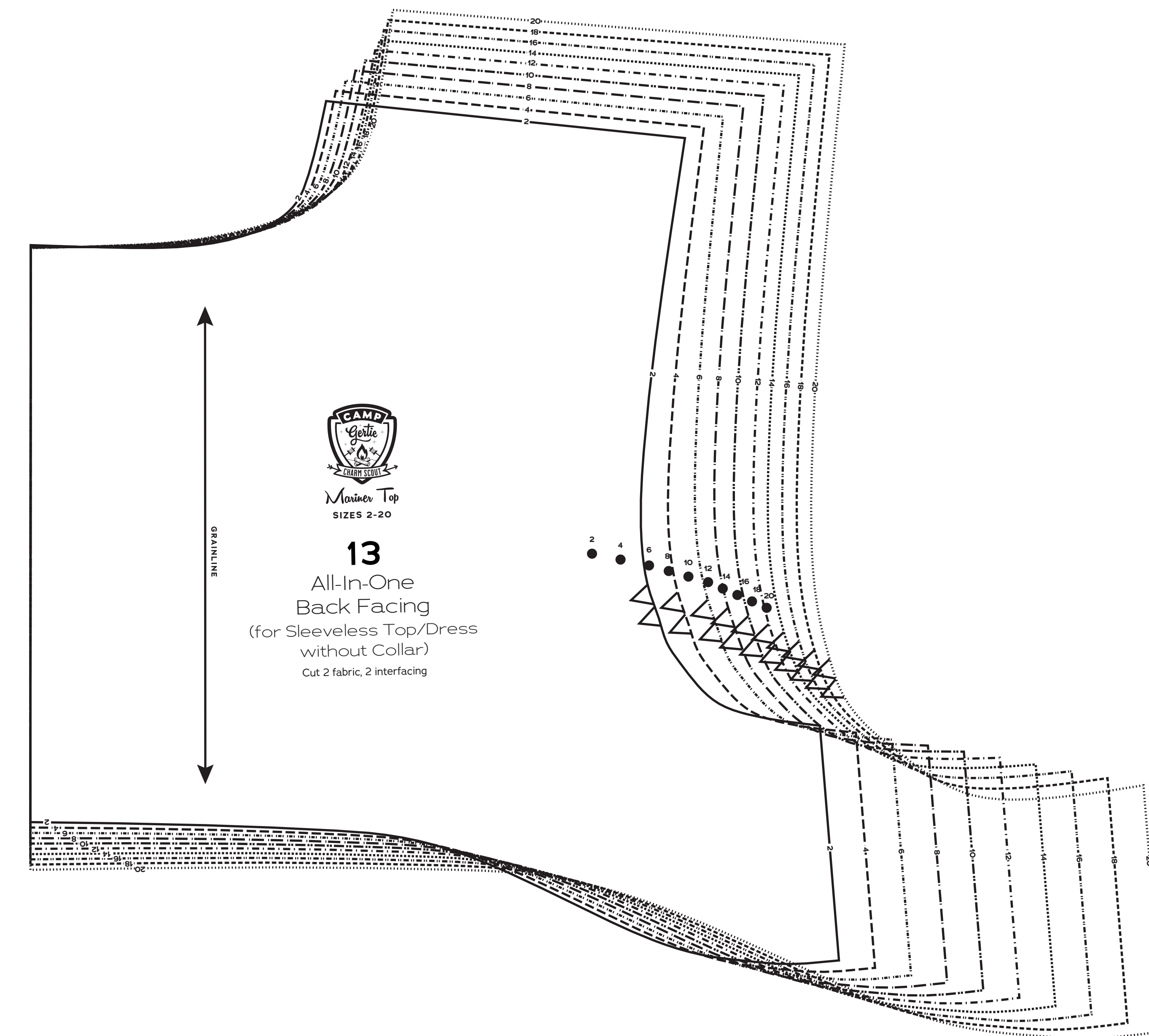
- 5 Sleeve
- 13 All-In-One Back Facing
- 16 Gigantic Bow Tie

#### PATTERN SIZE KEY

- 2
- 4
- 6
- 8
- 10
- 12
- 14
- 16
- 18
- 20

#### SYMBOL KEY

- grainline arrow
- match point/  
placement mark
- 1" test  
square





# Mariner Top

Sizes 2-20

with cup sizes A-H

5/8 inch (1.5 cm) seam allowances are included on all pattern pieces.

Page 5 of 5

### PAGE 5 PATTERN PIECES

- 7 Armhole Binding
- 12 All-In-One Front Facing, A Cup
- 12 All-In-One Front Facing, B/C Cup
- 12 All-In-One Front Facing, D/DD Cup
- 12 All-In-One Front Facing, F/G Cup
- 12 All-In-One Front Facing, H Cup

**PATTERN SIZE KEY**

2	-----
4	-----
6	-----
8	-----
10	-----
12	-----
14	-----
16	-----
18	-----
20	-----

**SYMBOL KEY**

- grainline arrow
- match point/ placement mark
- 1" test square

**7** Armhole Binding  
(for Sleeveless Top/Dress with Collar)  
Cut 2 fabric

**12**  
All-In-One Front Facing, A Cup  
(for Sleeveless Top/Dress without Collar)  
Cut 1 fabric on fold, 1 interfacing on fold

**12**  
All-In-One Front Facing, B/C Cup  
(for Sleeveless Top/Dress without Collar)  
Cut 1 fabric on fold, 1 interfacing on fold

**12**  
All-In-One Front Facing, D/DD Cup  
(for Sleeveless Top/Dress without Collar)  
Cut 1 fabric on fold, 1 interfacing on fold

**12**  
All-In-One Front Facing, F/G Cup  
(for Sleeveless Top/Dress without Collar)  
Cut 1 fabric on fold, 1 interfacing on fold

**12**  
All-In-One Front Facing, H Cup  
(for Sleeveless Top/Dress without Collar)  
Cut 1 fabric on fold, 1 interfacing on fold