

# Barbara

## BODICE

Sizes 18-34  
with cup sizes A-H

5/8 inch (1.5 cm) seam allowances  
are included on all pattern pieces.

PAGE 1 OF 3

### PATTERN PIECE INDEX

- 3 Bodice Side Front, A/B Cup
- 3 Bodice Side Front, C Cup
- 3 Bodice Side Front, D/DD Cup
- 3 Bodice Side Front, F/C Cup
- 3 Bodice Side Front, H Cup
- 6 Bodice Side Back



SIZE 18-34

PATTERN

SIZE KEY

18

20

22

24

26

28

30

32

34

### SYMBOL KEY

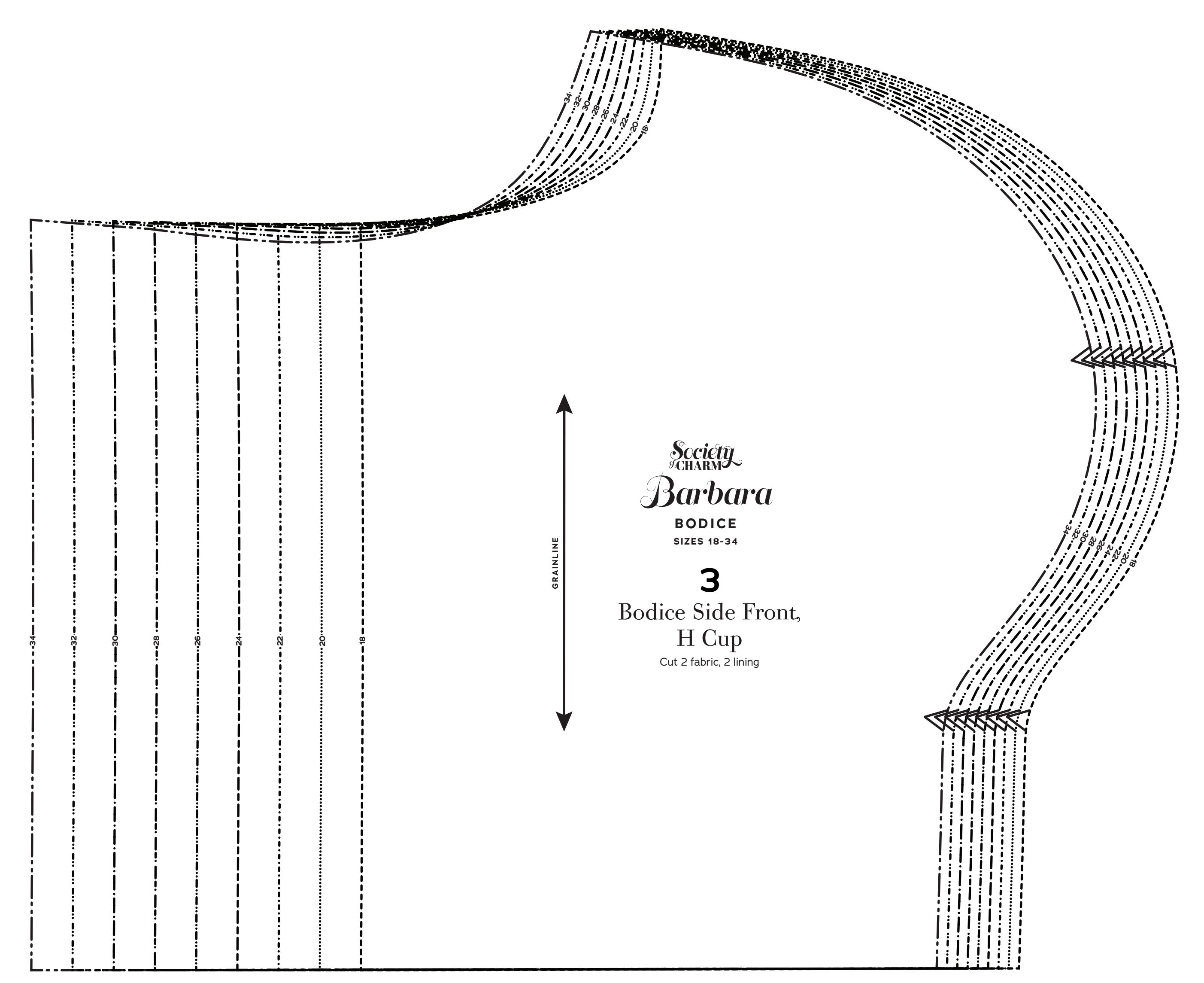
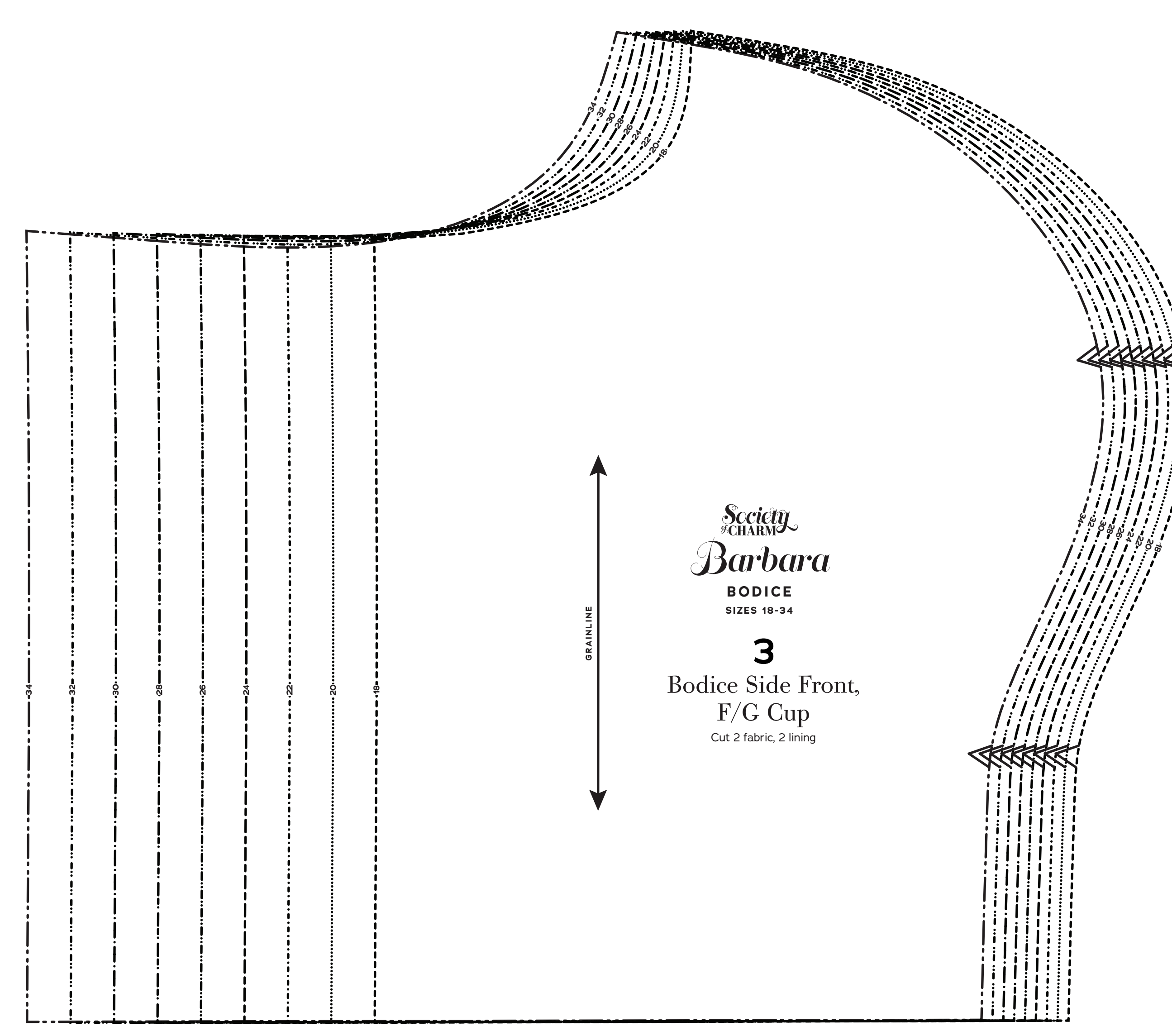
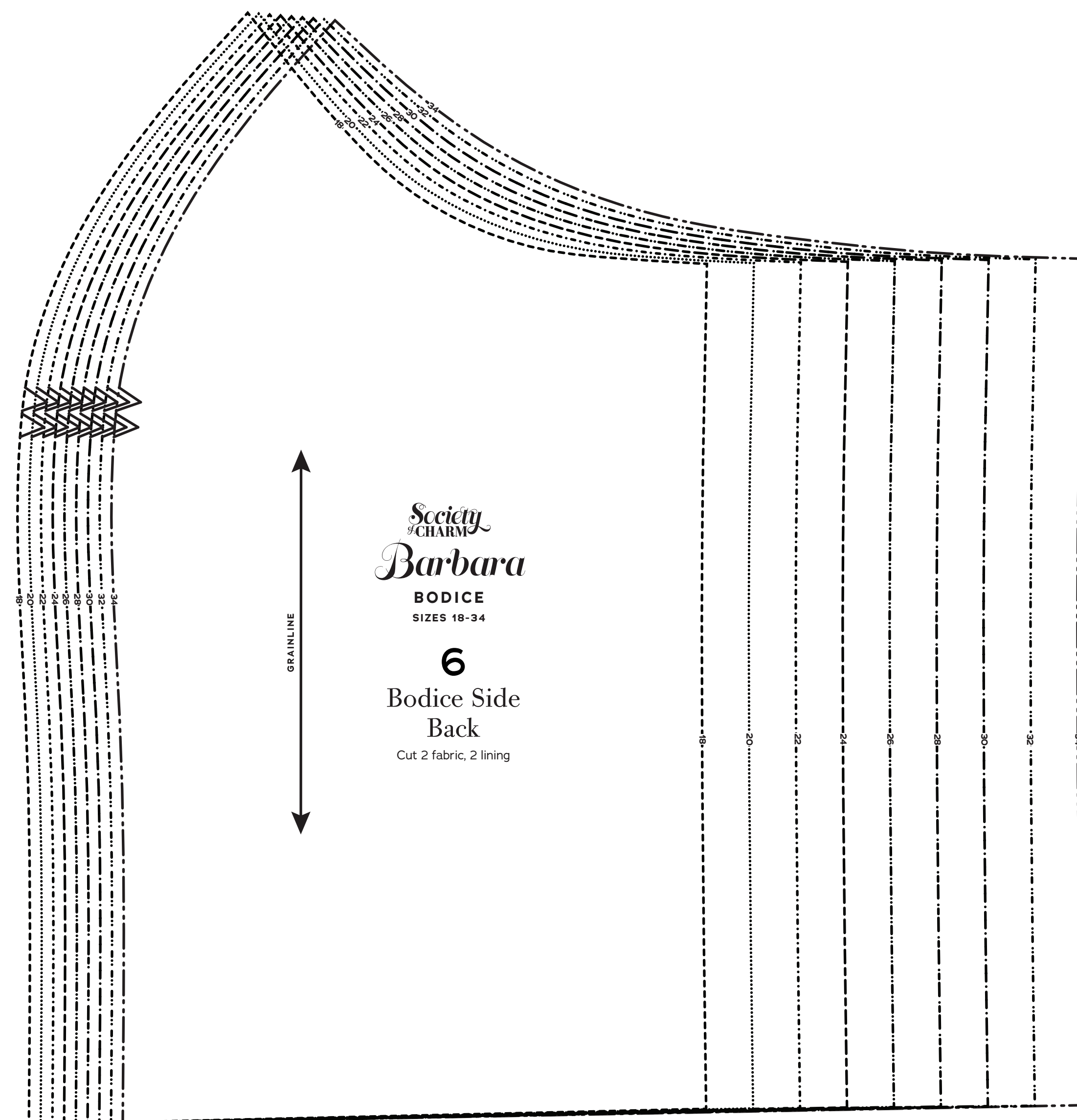
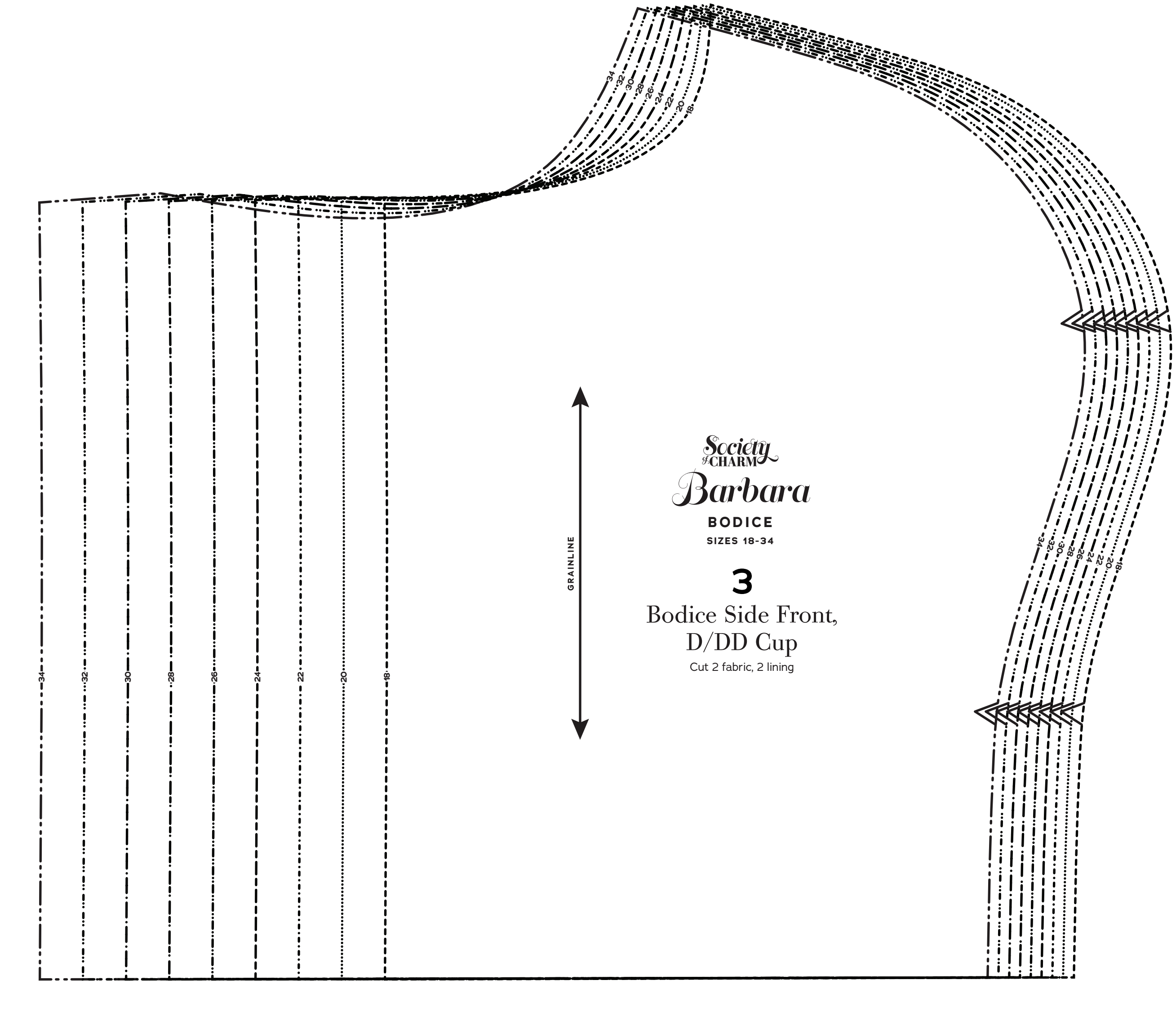
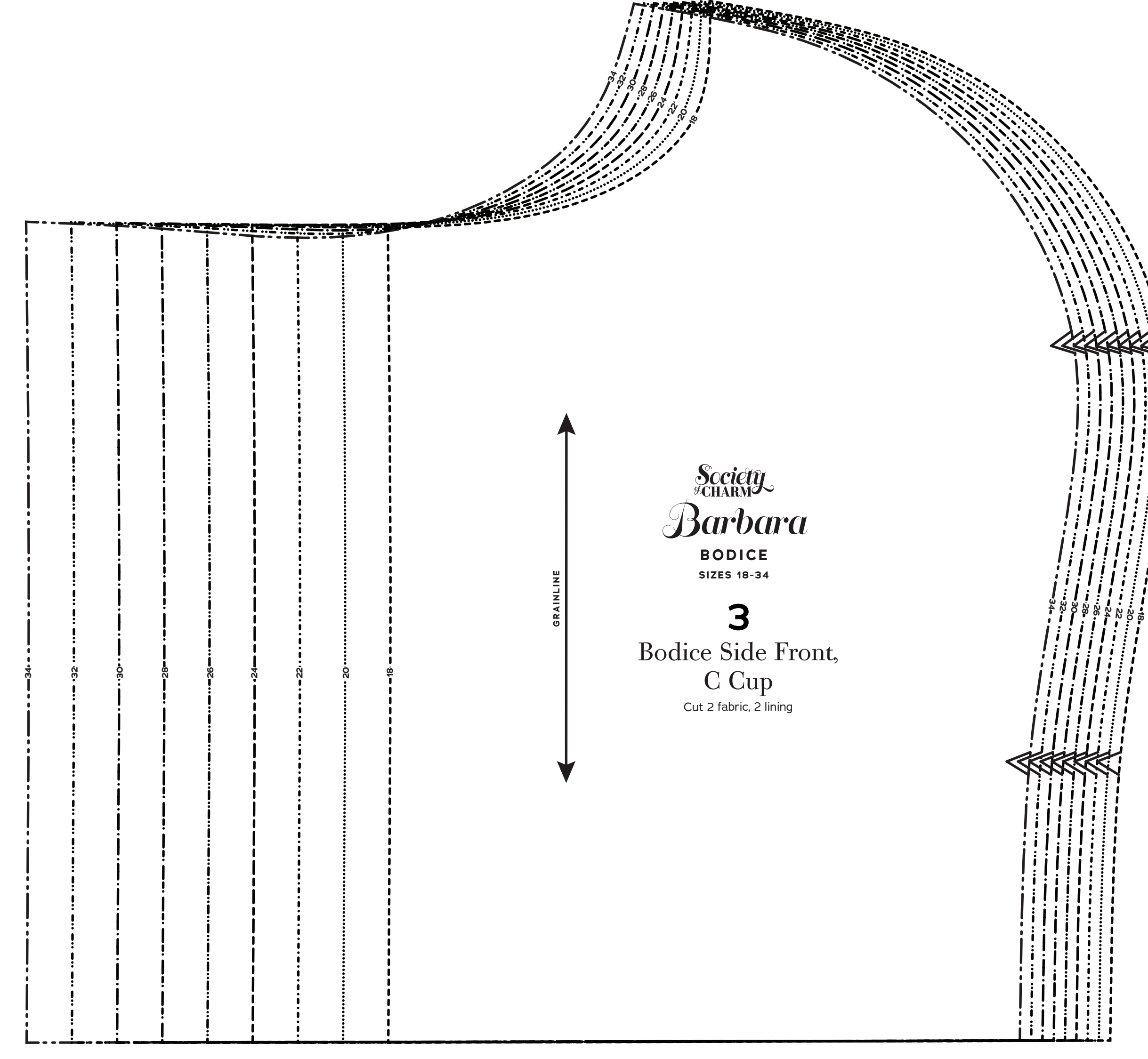
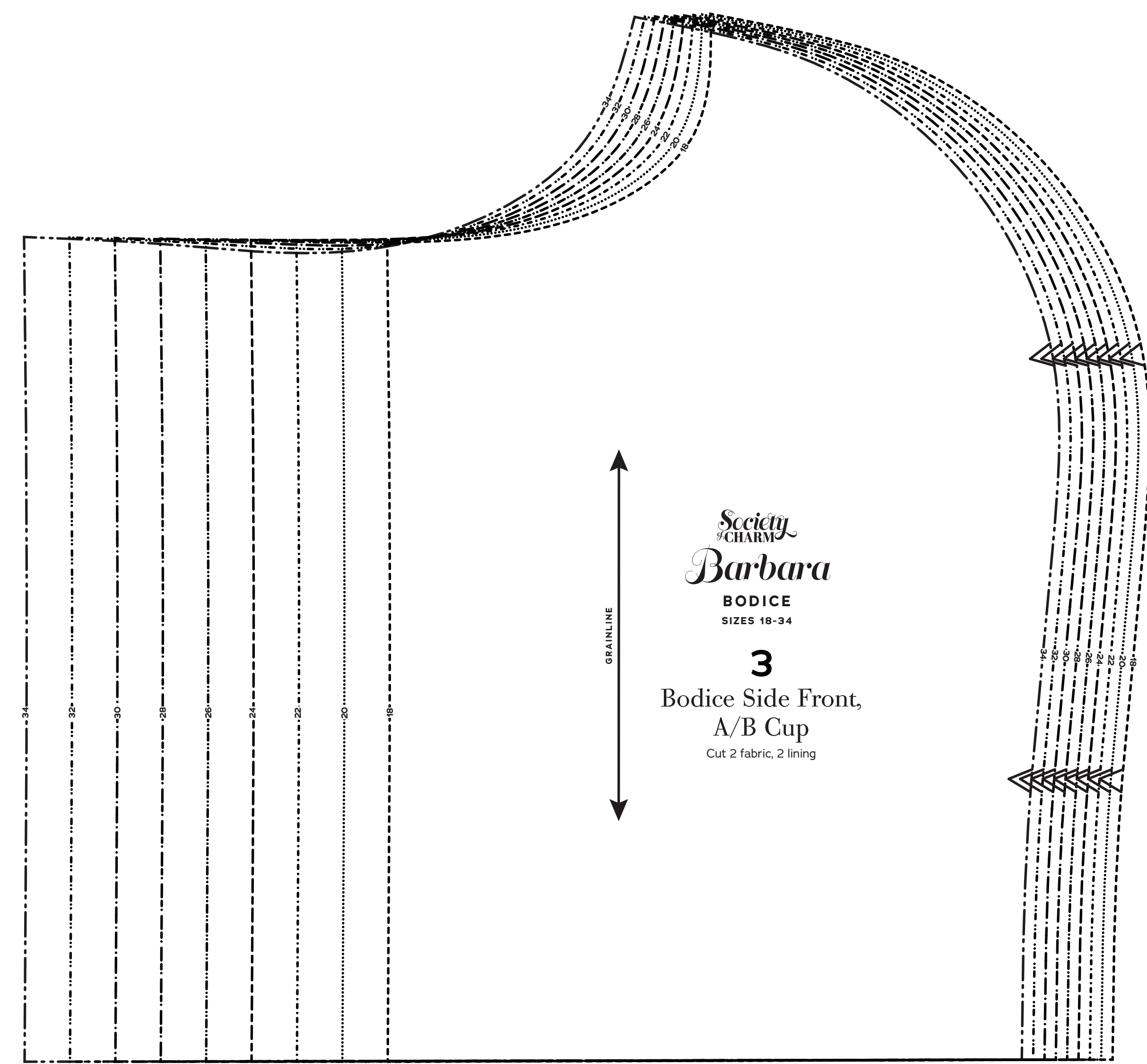
grainline arrow

match point/  
placement mark

1 in  
test  
square

2 cm  
test  
square

© 2023 Charm Patterns  
by Genie, Distribution  
and Commercial Use  
Prohibited.





# Barbara

## BODICE

Sizes 18-34  
with cup sizes A-H

5/8 inch (1.5 cm) seam allowances are included on all pattern pieces.

PAGE 2 OF 3

### PATTERN PIECE INDEX

- 1 Bodice Center Front, Thin Strap, A/B Cup
- 1 Bodice Center Front, Thin Strap, C-D/DD Cup
- 1 Bodice Center Front, Thin Strap, F/G Cup
- 2 Bodice Center Front, Wide Strap, A/B Cup
- 2 Bodice Center Front, Wide Strap, C-D/DD Cup
- 2 Bodice Center Front, Wide Strap, F/G Cup



**SIZE 18-34**  
**PATTERN**  
**SIZE KEY**

18 - - - - -  
 20 - - - - -  
 22 - - - - -  
 24 - - - - -  
 26 - - - - -  
 28 - - - - -  
 30 - - - - -  
 32 - - - - -  
 34 - - - - -

**SYMBOL KEY**  
 grainline arrow  
 match point/  
 placement mark  
 ●

© 2023 Charm Patterns  
 by Genie Distribution  
 and Commercial Use  
 Prohibited

1 in  
test  
square

2 cm  
test  
square

Society of Charm  
**Barbara**  
 BODICE  
 SIZES 18-34

**1**  
 Bodice Center Front,  
 Thin Strap,  
 A/B Cup  
 Cut 1 fabric on fold, 1 lining on fold

Society of Charm  
**Barbara**  
 BODICE  
 SIZES 18-34

**1**  
 Bodice Center Front,  
 Thin Strap,  
 C-D/DD Cup  
 Cut 1 fabric on fold, 1 lining on fold

Society of Charm  
**Barbara**  
 BODICE  
 SIZES 18-34

**1**  
 Bodice Center Front,  
 Thin Strap,  
 F/G Cup  
 Cut 1 fabric on fold, 1 lining on fold

Society of Charm  
**Barbara**  
 BODICE  
 SIZES 18-34

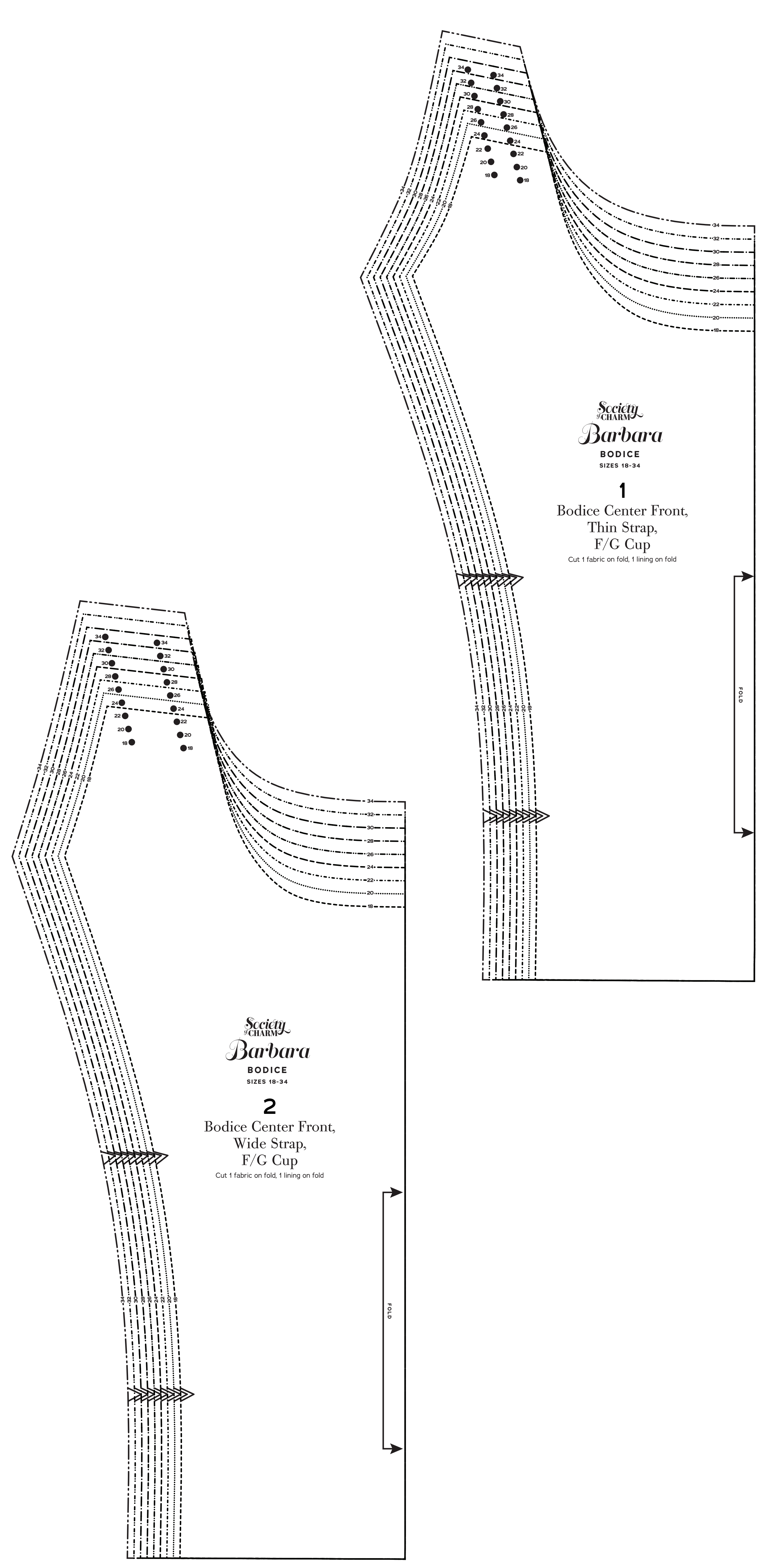
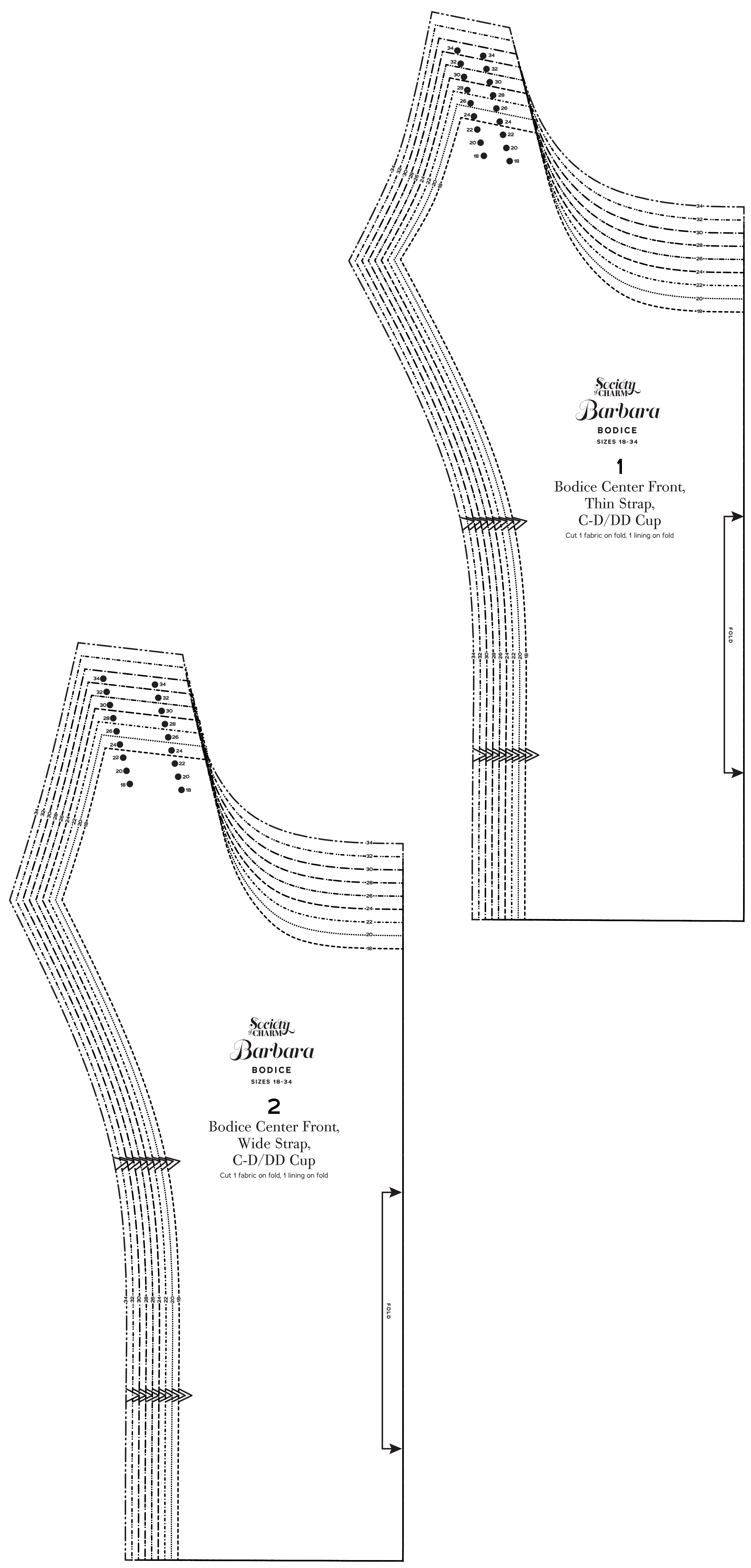
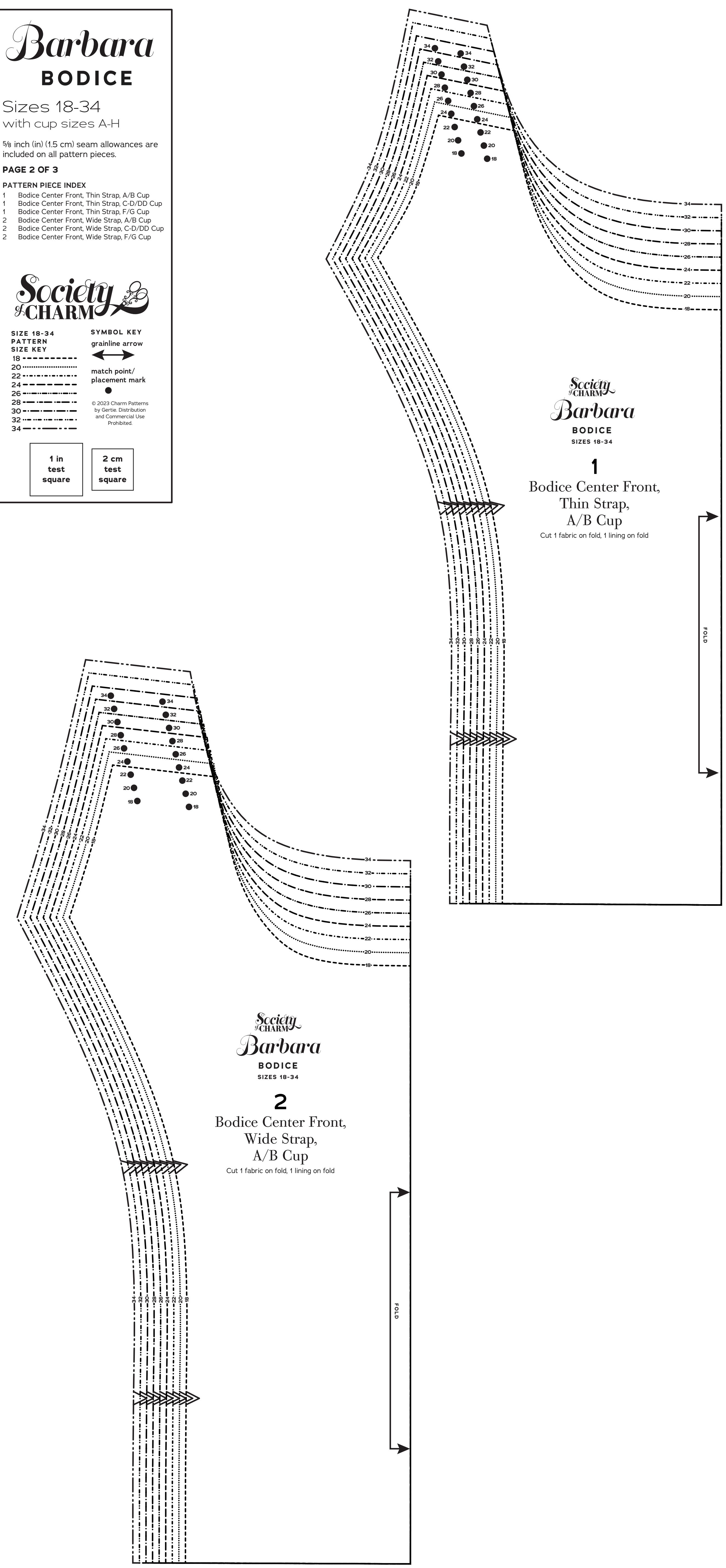
**2**  
 Bodice Center Front,  
 Wide Strap,  
 A/B Cup  
 Cut 1 fabric on fold, 1 lining on fold

Society of Charm  
**Barbara**  
 BODICE  
 SIZES 18-34

**2**  
 Bodice Center Front,  
 Wide Strap,  
 C-D/DD Cup  
 Cut 1 fabric on fold, 1 lining on fold

Society of Charm  
**Barbara**  
 BODICE  
 SIZES 18-34

**2**  
 Bodice Center Front,  
 Wide Strap,  
 F/G Cup  
 Cut 1 fabric on fold, 1 lining on fold





# Barbara

## BODICE

Sizes 18-34  
with cup sizes A-H

5/8 inch (1.5 cm) seam allowances  
are included on all pattern pieces.

PAGE 3 OF 3

### PATTERN PIECE INDEX

- 1 Bodice Center Front, Thin Strap, H Cup
- 2 Bodice Center Front, Wide Strap, H Cup
- 4 Bodice Center Back, Thin Strap
- 5 Bodice Center Back, Wide Strap
- 7 Thin Tie Strap
- 8 Wide Gathered Strap



SIZE 18-34  
PATTERN  
SIZE KEY

SYMBOL KEY  
grainline arrow  
match point/  
placement mark

18 - - - - -  
20 - - - - -  
22 - - - - -  
24 - - - - -  
26 - - - - -  
28 - - - - -  
30 - - - - -  
32 - - - - -  
34 - - - - -

© 2013 Charm Patterns  
by Sewie. Distribution  
and Commercial Use  
Prohibited.

