

Starlet

GOWN

Sizes 2-20
with cup sizes A-H

5/8 inch (1.5 cm) seam allowances
are included on all pattern pieces.

PAGE 2 OF 3

PATTERN PIECE INDEX

- 1 Bodice Front, H Cup
- 3 Bodice Back Inset
- 5 Skirt Side Front

1 in
test
square

2 cm
test
square



SIZES 2-20
PATTERN
SIZE KEY

- 2
- 4
- 6
- 8
- 10
- 12
- 14
- 16
- 18
- 20

SYMBOL KEY

- grainline arrow
- match point/
placement mark
- bust apex

© 2023 Charm Patterns
by Corie. Dist. by
Society of Charm. All
rights reserved. No
Commercial Use
Prohibited.

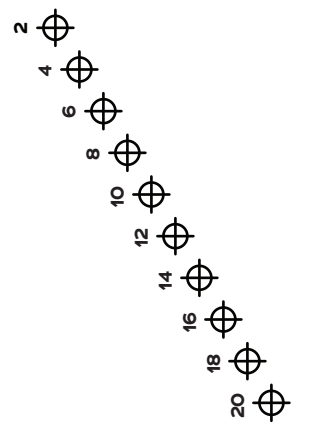
TOPSTITCH

FOLD

Society of Charm
Starlet
GOWN
SIZES 2-20

1
Bodice
Front,
H Cup

Cut 1 fabric on fold,
1 lining on fold



LENGTH ADJUSTMENT LINE

UNIT CONVERSION TABLE

GRAINLINE

5
Skirt Side
Front

Society of Charm
Starlet
GOWN
SIZES 2-20

Cut 2 fabric

UNIT CONVERSION TABLE

LENGTH ADJUSTMENT LINE

GRAINLINE

2 0 0 2

Society of Charm
Starlet
GOWN
SIZES 2-20

3
Bodice
Back Inset

Cut 1 fabric
Fabric: 1/2 lining

Starlet GOWN

Sizes 2-20
with cup sizes A-H
5/8 inch (1.5 cm) seam allowances
are included on all pattern pieces.

PAGE 3 OF 3

PATTERN PIECE INDEX
6 Skirt Back
8 Skirt Side Back

1 in
test
square

2 cm
test
square

**Society
of CHARM**

SIZES 2-20
PATTERN
SIZE KEY

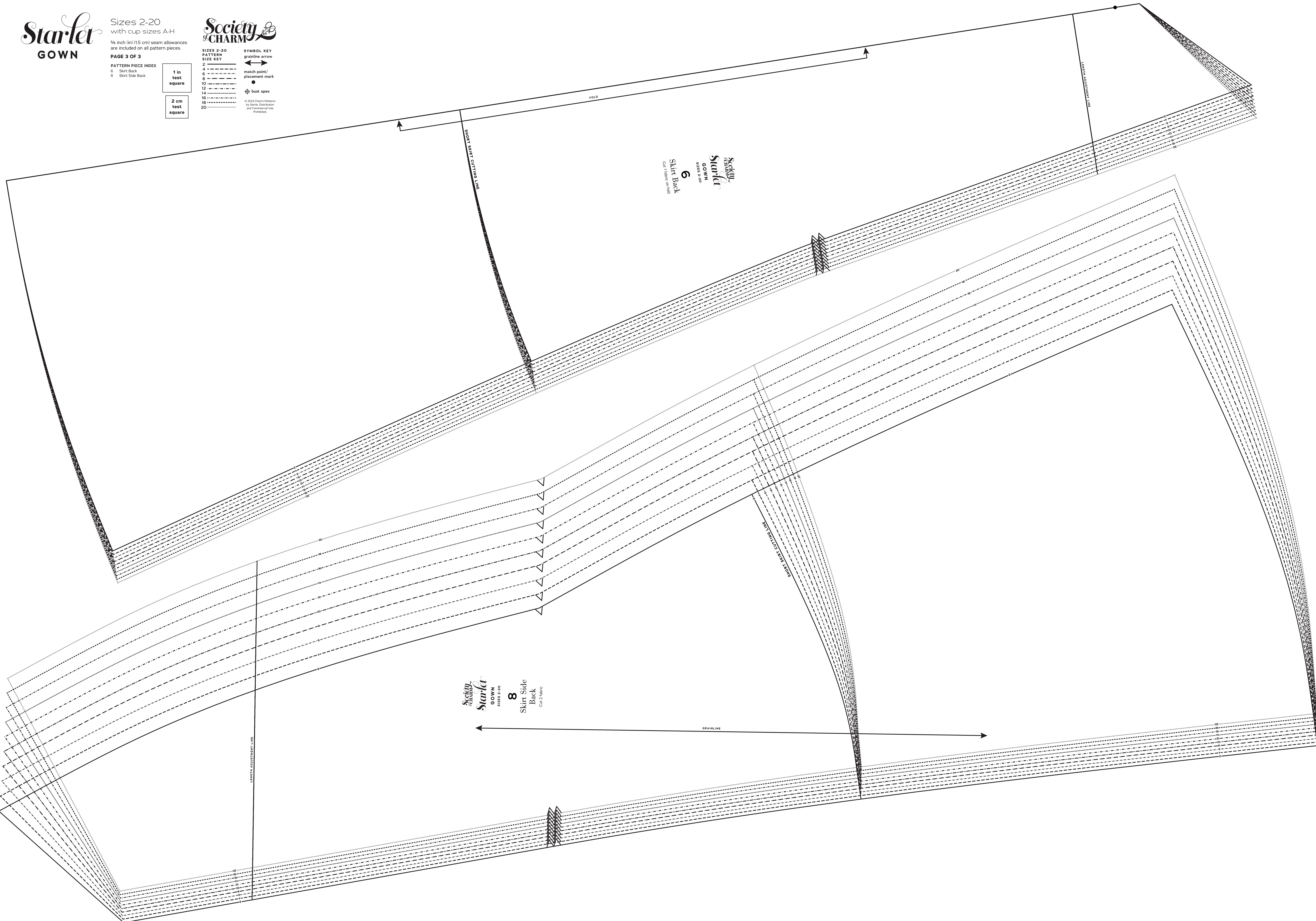
2 ———
4 - - - -
6 - - - -
8 - - - -
10 - - - -
12 - - - -
14 - - - -
16 - - - -
18 - - - -
20 - - - -

SYMBOL KEY
grainline arrow

match point/
placement mark

bust apex

© 2023 Charm Patterns
by Seris. Distribution
and Commercial Use
Prohibited



**Society
of CHARM**
Starlet
GOWN
SIZES 2-20
8
Skirt Side
Back
Cut 2 fabric

**Society
of CHARM**
Starlet
GOWN
SIZES 2-20
6
Skirt Back
Cut 1 fabric on fold