



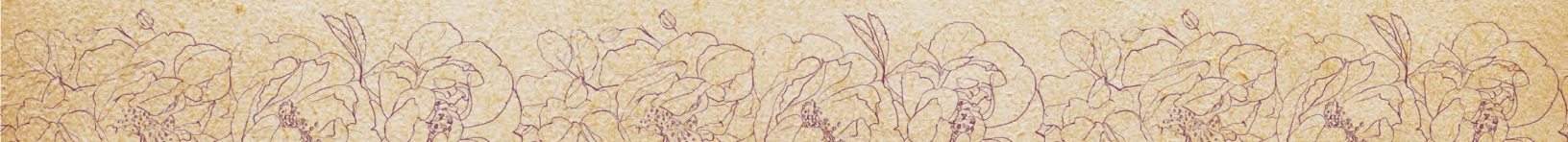
MIX & MATCH
with the
Lamour Dress,
Liz Dress,
Elsa Culottes,
& more!

Barbara

BODICE

A PATREON EXCLUSIVE PATTERN

© 2023 Charm Patterns by Gertie





Squeee! I'm so excited to share this dreamy Barbara Bodice with you!

This updated version of a familiar favorite is inspired by Barbara Millicent Roberts, known to us all as Barbie.

Fully lined with princess seams, this bodice can be combined with any of the Lamour-series bottoms or a simple gathered skirt to create the perfect summer sundress.

We've included two different shoulder strap options: a thin tie shoulder strap, inspired by the upcoming *Barbie* movie, and a wider gathered strap (to hide those bra straps!).

Don't forget to share your makes with #charmpatterns and #barbarabodice so we can see all of your fabulous creations!

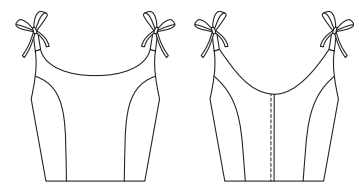


xoxo, Gertie

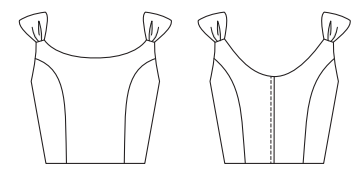


Key Details

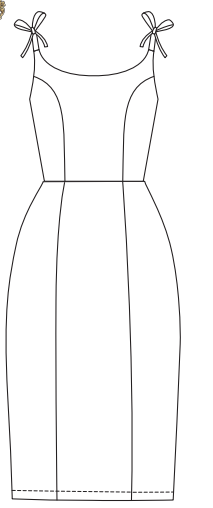
- Princess seams
- Scoop neckline
- Two shoulder strap options
- Fully lined



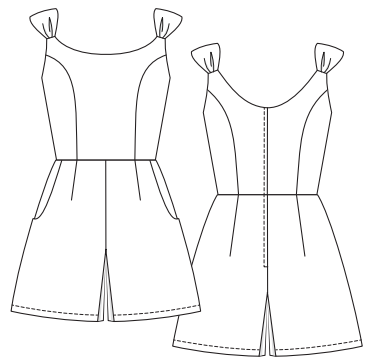
Barbara Bodice with thin tie straps



Barbara Bodice with wide gathered straps



Barbara Bodice with thin tie straps and Wanda Skirt



Barbara Bodice with wide gathered straps and Elsa Shorts



Barbara Bodice with thin tie straps and Millicent Skirt

Sneak peek alert!

Create your Barbie dream girl fantasy dress by pairing the Barbara Bodice with the Millicent Skirt! This full circle skirt with box pleats will be released on July 15 to all Glamour Circle+ patrons, and it is a perfect match for the pink gingham outfit in the *Barbie* movie!

SIZE CHART

The Barbara Bodice is sized in women's US 2–20 and 18–34, A–H cup sizes. Please use the chart below to pick your size. The High Bust measurement should be taken above your breasts (without a bra) and the Full Bust measurement should be taken at the fullest part of your bustline (with a bra). Take the Waist measurement at the smallest part of your torso. Note that it is best to choose your size by your bust measurements (and add or remove from the side seams at the waist if needed). Not sure which size range to choose? Read more about our [two size ranges here!](#)



FIT NOTES

The Barbara Bodice is a fitted bodice with shoulder straps. The pattern is designed to fit with 3/4 of an inch (in) (1.9 cm) of ease in the bust and 3/4 in (1.9 cm) of ease at the waist. See the charts below for finished garment measurements.

Sizes 2-20	2	4	6	8	10	12	14	16	18	20
High Bust	29 in 73.7 cm	31 in 78.7 cm	33 in 83.8 cm	35 in 88.9 cm	37 in 94 cm	39 in 99 cm	41 in 104.1 cm	43 in 109.2 cm	45 in 114.3 cm	47 in 119.4 cm
Bust A cup	30.5 in 77.5 cm	32.5 in 82.5 cm	34.5 in 87.6 cm	36.5 in 92.7 cm	38.5 in 97.8 cm	40.5 in 102.9 cm	42.5 in 108 cm	44.5 in 113 cm	46.5 in 118.1 cm	48.5 in 123.2 cm
Bust B/C cup	31 in 78.7 cm	33 in 83.8 cm	35 in 88.9 cm	37 in 94 cm	39 in 99 cm	41 in 104.1 cm	43 in 109.2 cm	45 in 114.3 cm	47 in 119.4 cm	49 in 124.5 cm
Bust D/DD cup	32 in 81.3 cm	34 in 86.4 cm	36 in 91.4 cm	38 in 96.5 cm	40 in 101.6 cm	42 in 106.7 cm	44 in 111.8 cm	46 in 116.8 cm	48 in 121.9 cm	50 in 127 cm
Bust F/G cup	33 in 83.8 cm	35 in 88.9 cm	37 in 94 cm	39 in 99 cm	41 in 104.1 cm	43 in 109.2 cm	45 in 114.3 cm	47 in 119.4 cm	49 in 124.5 cm	51 in 129.5 cm
Bust H cup	34 in 86.4 cm	36 in 91.4 cm	38 in 96.5 cm	40 in 101.6 cm	42 in 106.7 cm	44 in 111.8 cm	46 in 116.8 cm	48 in 121.9 cm	50 in 127 cm	52 in 132.1 cm
Waist	24 in 61 cm	26 in 66 cm	28 in 71.1 cm	30 in 76.2 cm	32 in 81.3 cm	34 in 86.4 cm	36 in 91.4 cm	38 in 96.5 cm	40 in 101.6 cm	42 in 106.7 cm

Sizes 18-34	18	20	22	24	26	28	30	32	34
High Bust	39.5 in 100.3 cm	41.5 in 105.4 cm	43.5 in 110.5 cm	45.5 in 115.6 cm	47.5 in 120.7 cm	49.5 in 125.7 cm	51.5 in 130.8 cm	53.5 in 135.9 cm	55.5 in 141 cm
Bust A/B cup	42.5 in 108 cm	44.5 in 113 cm	46.5 in 118.1 cm	48.5 in 123.2 cm	50.5 in 128.3 cm	52.5 in 133.4 cm	54.5 in 138.4 cm	56.5 in 143.5 cm	58.5 in 148.6 cm
Bust C cup	43 in 109.2 cm	45 in 114.3 cm	47 in 119.4 cm	49 in 124.5 cm	51 in 129.5 cm	53 in 134.6 cm	55 in 139.7 cm	57 in 144.8 cm	59 in 149.9 cm
Bust D/DD cup	44 in 111.8 cm	46 in 116.8 cm	48 in 121.9 cm	50 in 127 cm	52 in 132.1 cm	54 in 137.2 cm	56 in 142.2 cm	58 in 147.3 cm	60 in 152.4 cm
Bust F/G cup	45 in 114.3 cm	47 in 119.4 cm	49 in 124.5 cm	51 in 129.5 cm	53 in 134.6 cm	55 in 139.7 cm	57 in 144.8 cm	59 in 149.9 cm	61 in 154.9 cm
Bust H cup	46 in 116.8 cm	48 in 121.9 cm	50 in 127 cm	52 in 132.1 cm	54 in 137.2 cm	56 in 142.2 cm	58 in 147.3 cm	60 in 152.4 cm	62 in 157.5 cm
Waist	40 in 101.6 cm	42 in 106.7 cm	44 in 111.8 cm	46 in 116.8 cm	48 in 121.9 cm	50 in 127 cm	52 in 132.1 cm	54 in 137.2 cm	56 in 142.2 cm

Finished Measurements

Sizes 2-20	2	4	6	8	10	12	14	16	18	20
Bust A	31.25 in 79.4 cm	33.25 in 84.5 cm	35.25 in 89.5 cm	37.25 in 94.6 cm	39.25 in 99.7 cm	41.25 in 104.8 cm	43.25 in 109.9 cm	45.25 in 114.9 cm	47.25 in 120 cm	49.25 in 125.1 cm
Bust B/C	31.75 in 80.6 cm	33.75 in 85.7 cm	35.75 in 90.8 cm	37.75 in 95.9 cm	39.75 in 101 cm	41.75 in 106 cm	43.75 in 111.1 cm	45.75 in 116.2 cm	47.75 in 121.3 cm	49.75 in 126.4 cm
Bust D/DD	32.75 in 83.2 cm	34.75 in 88.3 cm	36.75 in 93.3 cm	38.75 in 98.4 cm	40.75 in 103.5 cm	42.75 in 108.6 cm	44.75 in 113.7 cm	46.75 in 118.8 cm	48.75 in 123.9 cm	50.75 in 129 cm
Bust F/G	33.75 in 85.7 cm	35.75 in 90.8 cm	37.75 in 95.9 cm	39.75 in 101 cm	41.75 in 106 cm	43.75 in 111.1 cm	45.75 in 116.2 cm	47.75 in 121.3 cm	49.75 in 126.4 cm	51.75 in 131.4 cm
Bust H	34.75 in 88.3 cm	36.75 in 93.3 cm	38.75 in 98.4 cm	40.75 in 103.5 cm	42.75 in 108.6 cm	44.75 in 113.7 cm	46.75 in 118.8 cm	48.75 in 123.9 cm	50.75 in 129 cm	52.75 in 134 cm
Waist	24.75 in 62.9 cm	26.75 in 67.9 cm	28.75 in 73 cm	30.75 in 78.1 cm	32.75 in 83.2 cm	34.75 in 88.3 cm	36.75 in 93.3 cm	38.75 in 98.4 cm	40.75 in 103.5 cm	42.75 in 108.6 cm
CF Length A Cup	8.5 in 21.6 cm	8.75 in 22.2 cm	9 in 22.9 cm	9.25 in 23.5 cm	9.5 in 24.1 cm	9.75 in 24.8 cm	10 in 25.4 cm	10.25 in 26 cm	10.5 in 26.7 cm	10.75 in 27.3 cm
CF Length B-D/DD Cups	8.75 in 22.2 cm	9 in 22.9 cm	9.25 in 23.5 cm	9.5 in 24.1 cm	9.75 in 24.8 cm	10 in 25.4 cm	10.25 in 26 cm	10.5 in 26.7 cm	10.75 in 27.3 cm	11 in 27.9 cm
CF Length F-H Cups	9.25 in 23.5 cm	9.5 in 24.1 cm	9.75 in 24.8 cm	10 in 25.4 cm	10.25 in 26 cm	10.5 in 26.7 cm	10.75 in 27.3 cm	11 in 27.9 cm	11.25 in 28.6 cm	11.5 in 29.2 cm

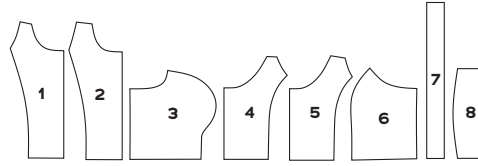
Sizes 18-34	18	20	22	24	26	28	30	32	34
Bust A/B	43.25 in 109.9 cm	45.25 in 114.9 cm	47.25 in 120 cm	49.25 in 125.1 cm	51.25 in 130.2 cm	53.25 in 135.3 cm	55.25 in 140.3 cm	57.25 in 145.4 cm	59.25 in 150.5 cm
Bust C	43.75 in 111.1 cm	45.75 in 116.2 cm	47.75 in 121.3 cm	49.75 in 126.4 cm	51.75 in 131.4 cm	53.75 in 136.5 cm	55.75 in 141.6 cm	57.75 in 146.7 cm	59.75 in 151.8 cm
Bust D/DD	44.75 in 113.7 cm	46.75 in 118.7 cm	48.75 in 123.8 cm	50.75 in 128.9 cm	52.75 in 134 cm	54.75 in 139.1 cm	56.75 in 144.1 cm	58.75 in 149.2 cm	60.75 in 154.3 cm
Bust F/G	45.75 in 116.2 cm	47.75 in 121.3 cm	49.75 in 126.4 cm	51.75 in 131.4 cm	53.75 in 136.5 cm	55.75 in 141.6 cm	57.75 in 146.7 cm	59.75 in 151.8 cm	61.75 in 156.9 cm
Bust H	46.75 in 118.7 cm	48.75 in 123.8 cm	50.75 in 128.9 cm	52.75 in 134 cm	54.75 in 139.1 cm	56.75 in 144.1 cm	58.75 in 149.2 cm	60.75 in 154.3 cm	62.75 in 159.4 cm
Waist	40.75 in 103.5 cm	42.75 in 108.6 cm	44.75 in 113.7 cm	46.75 in 118.7 cm	48.75 in 123.8 cm	50.75 in 128.9 cm	52.75 in 134 cm	54.75 in 139.1 cm	56.75 in 144.1 cm
CF Length A/B Cup	9.75 in 24.8 cm	10 in 25.4 cm	10.25 in 26 cm	10.5 in 26.7 cm	10.75 in 27.3 cm	11 in 27.9 cm	11.25 in 28.6 cm	11.5 in 29.2 cm	11.75 in 29.8 cm
CF Length C Cup	10.25 in 26 cm	10.5 in 26.7 cm	10.75 in 27.3 cm	11 in 27.9 cm	11.25 in 28.6 cm	11.5 in 29.2 cm	11.75 in 29.8 cm	12 in 30.5 cm	12.25 in 31.1 cm
CF Length D/DD Cup	10.25 in 26 cm	10.5 in 26.7 cm	10.75 in 27.3 cm	11 in 27.9 cm	11.25 in 28.6 cm	11.5 in 29.2 cm	11.75 in 29.8 cm	12 in 30.5 cm	12.25 in 31.1 cm
CF Length F/G Cup	10.75 in 27.3 cm	11 in 27.9 cm	11.25 in 28.6 cm	11.5 in 29.2 cm	11.75 in 29.8 cm	12 in 30.5 cm	12.25 in 31.1 cm	12.5 in 31.8 cm	12.75 in 32.4 cm
CF Length H Cup	11.5 in 29.2 cm	11.75 in 29.8 cm	12 in 30.5 cm	12.25 in 31.1 cm	12.5 in 31.8 cm	12.75 in 32.4 cm	13 in 33 cm	13.25 in 33.7 cm	13.5 in 34.3 cm

REQUIRED YARDAGE & CUTTING LAYOUTS

NOTE: All pattern pieces are shown in a “without nap” layout. You may need additional yardage for directional prints, stripes, plaids, and other prints that need to be matched across seamlines.

Pattern Pieces

- Bodice Center Front, Thin Strap**
Cut 1 fabric on fold, cut 1 lining on fold
- Bodice Center Front, Wide Strap**
Cut 1 fabric on fold, cut 1 lining on fold
- Bodice Side Front**
Cut 2 fabric, cut 2 lining
- Bodice Center Back, Thin Strap**
Cut 2 fabric, cut 2 lining
- Bodice Center Back, Wide Strap**
Cut 2 fabric, cut 2 lining

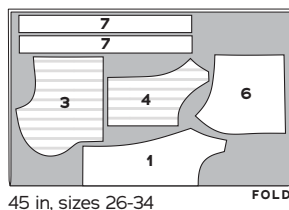
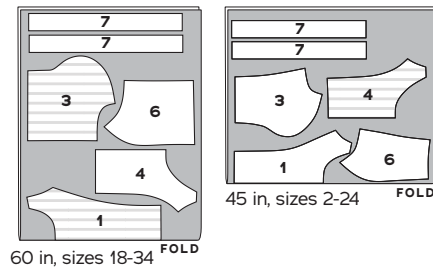
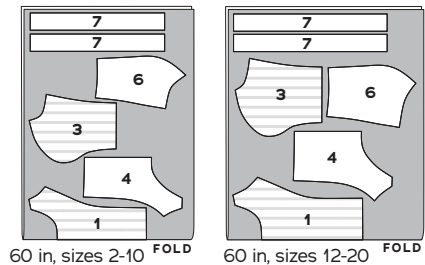


- Bodice Side Back**
Cut 2 fabric, cut 2 lining
- Thin Tie Strap**
Cut 4 fabric, cut 4 interfacing
- Wide Gathered Strap**
Cut 4 fabric, cut 2 interfacing

Fabric

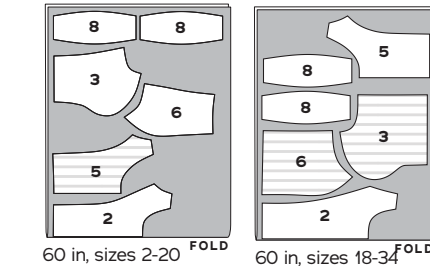
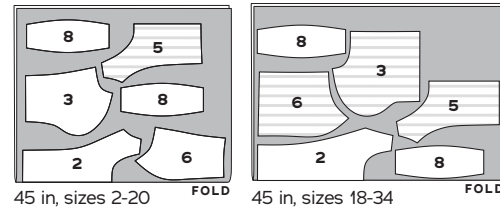
Bodice with Thin Tie Straps (1, 3, 4, 6, 7)

	Sizes 2-10		Sizes 12-20		Sizes 18-24		Sizes 26-34	
	2-10	12-20	18-24	26-34	18-24	26-34	18-24	26-34
45 in	7/8 yd 0.8 m	7/8 yd 0.8 m	7/8 yd 0.8 m	1 1/8 yd 1 m				
60 in	5/8 yd 0.6 m	3/4 yd 0.7 m	3/4 yd 0.7 m	3/4 yd 0.7 m				



Bodice with Wide Gathered Straps (2, 3, 5, 6, 8)

	Sizes 2-10		Sizes 12-20		Sizes 18-24		Sizes 26-34	
	2-10	12-20	18-24	26-34	18-24	26-34	18-24	26-34
45 in	7/8 yd 0.8 m	7/8 yd 0.8 m	1 yd 0.9 m	1 yd 0.9 m				
60 in	3/4 yd 0.7 m	3/4 yd 0.7 m	3/4 yd 0.7 m	3/4 yd 0.7 m				



KEY TO LAYOUTS

- Right side of pattern piece
- Wrong side of pattern piece

Be sure to note whether the pieces are cut on a double or single layer of fabric. For a double layer, there will be a note indicating FOLD on the layout.

Fabric Notes

We recommend light- to medium-weight wovens: cottons like shirting, poplin, broadcloth, chambray, sateen, twill, and lawn; silks with body like dupioni and shantung; lightweight wool suitings and flannel; and linen and linen blends. Stretch wovens are possible for this design, but knits are not recommended.

For the lining, we recommend: cottons like shirting, poplin, broadcloth, and lawn.

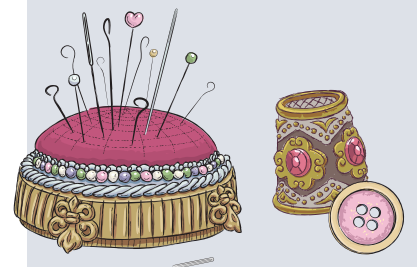
Materials & Notions

- Fabric for the bodice
- Lining fabric
- Thread to match
- Lightweight fusible interfacing (look for woven, weft, or tricot types)
- 1/4-in-wide fusible stay tape to stabilize the zipper opening (alternatively, cut a strip from a scrap of fusible interfacing yardage)
- 18-in regular zipper

Resources

Here is the fabric I used for the samples and in the video tutorial. There are lots of places to purchase fabric, so this is solely a guide you can use as a reference:

[One-inch Carolina Gingham in Petal Pink](#)

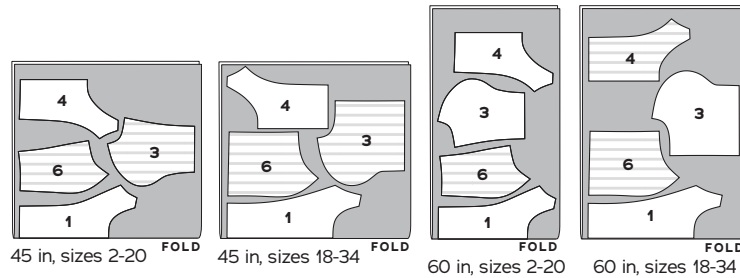


REQUIRED YARDAGE & CUTTING LAYOUTS (CONT'D)

Lining

Bodice with Thin Tie Straps (1, 3, 4, 6)

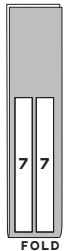
	Sizes 2-10	Sizes 12-20	Sizes 18-24	Sizes 26-34
45 in	¾ yd 0.7 m	¾ yd 0.7 m	¾ yd 0.7 m	⅞ yd 0.8 m
60 in	½ yd 0.5 m	⅝ yd 0.6 m	⅝ yd 0.6 m	⅝ yd 0.6 m



Interfacing

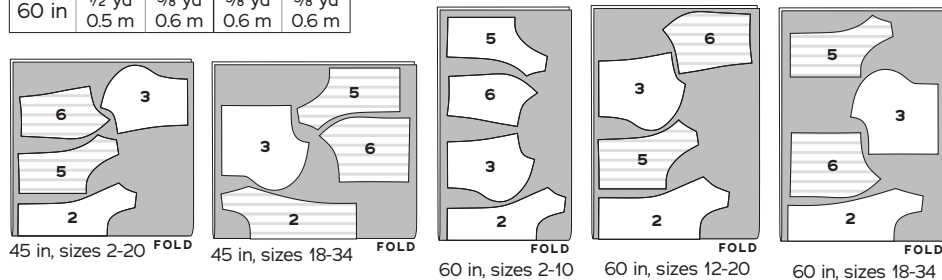
Bodice with Thin Tie Straps (7)

All sizes	
60 in	¼ yd 0.2 m



Bodice with Wide Gathered Straps (2, 3, 5, 6)

	Sizes 2-10	Sizes 12-20	Sizes 18-24	Sizes 26-34
45 in	¾ yd 0.7 m	¾ yd 0.7 m	¾ yd 0.7 m	¾ yd 0.7 m
60 in	½ yd 0.5 m	⅝ yd 0.6 m	⅝ yd 0.6 m	⅝ yd 0.6 m



Bodice with Wide Gathered Straps (8)

All sizes	
60 in	¼ yd 0.2 m



SEWING INSTRUCTIONS

BEFORE SEWING

Transferring marks: use dressmaker's tracing paper and a tracing wheel to transfer all pattern markings to the wrong side (WS) of your fabric. Mark pattern notches by snipping into the seam allowance with the tip of your scissors.

Interfacing: some of the pattern pieces need to be stabilized with fusible interfacing prior to sewing. Follow the interfacing cutting instructions on the pattern pieces. Apply fusible interfacing to the WS of the fabric, using a press cloth and steam. Do not rub your iron back and forth; lift it up and press it down for several seconds at a time until interfacing is fully adhered.

NOTES

- ⅝-in (1.5 cm) seam allowances are included on all pattern pieces, except where otherwise noted.
- Press your stitching lines after every step, even when not specified in the instructions. You do not need to press basting or gathering stitches.
- It's unnecessary to finish the seam allowances before sewing, as they will be completely enclosed by the lining.
- If you'd like to make a matching fabric belt, follow [this tutorial on the Charm blog](#).



MIX & MATCH

THIS PATTERN IS PART OF THE LAMOUR SERIES

This pattern can be used as an alternative bodice for any of the Lamour-series bottoms to create a dress, jumpsuit, or romper. See the full list of mix-and-match options for this series at CharmPatterns.com/mix-and-match.

SEW THE BODICE

Bodice

1. Stabilize zipper opening: apply 1¼-in-wide (3 cm) strips of fusible interfacing to the WS of the Bodice Center Backs (4 or 5) center back (CB) opening.

2. Staystitch neckline: using a ½-in (1.3 cm) seam allowance, staystitch the neckline on Bodice Center Front (1 or 2) from each princess seam to the center front (CF) so the stitching lines meet at CF. Repeat staystitching on bodice center backs for the back neckline, working from each princess seam to the CB.

3. Staystitch princess seams on center front and back panels: using a ½-in (1.3 cm) seam allowance, stitch bodice center front and bodice center backs from the top edge of the princess seam to the lower notch, then clip into the seam allowance every ½ in between the top edge and the notch, being careful not to clip into the stitching. Repeat for the bodice center front and bodice center back linings.

4. Sew the front princess seams: pin Bodice Side Front (3) to bodice center front, right sides (RS) together, matching notches and spreading the clipped seam allowance so the curves match. Stitch with the clipped layer on top. Press seam allowances toward CF. Repeat for the bodice front lining.

5. Sew the back princess seams: pin Bodice Side Back (6) to bodice center backs, RS together, matching notches and spreading the clipped seam allowance so the curves match. Stitch with the clipped layer on top. Press seam allowances toward CB. Repeat for the bodice back lining.

6. Sew side seams: with RS together, pin bodice front unit to bodice back units at side seams. Stitch side seam and press seam allowances open. Repeat for the bodice lining.

7. Staystitch lining at waist: using a ½-in (1.3 cm) seam allowance, staystitch lining at waist. Start stitching at CB opening and end at opposite side. Clip into curves of waist.

For a bodice with the thin tie shoulder straps, continue to the next step. For a bodice with the wide gathered straps, skip to the Wide Gathered Strap section.

Thin Tie Strap

1. Create shoulder tie straps: fold each Thin Tie Strap (7) lengthwise, RS together, and pin. Stitch around one short edge and the long edge, pivoting at the corner, and leaving one straight short end open. Trim corners and seam allowances to ¼ in (6 mm). Turn RS out, making sure corners are crisp by using a point turner, knitting needle, or pin to gently poke them out. Press flat.

2. Attach shoulder tie strap to bodice: pin raw edge of thin tie strap to shoulder attachment raw edge of bodice center front/back between placement circles, RS together. Stitch with a ½-in (1.3 cm) seam allowance.

Skip to the Bodice Lining & Zipper section.

Wide Gathered Strap

1. Create shoulder gathered straps: pin two Wide Gathered Straps (8), RS together. Stitch along both long edges. Trim seam allowances and notch along curved edge. Turn RS out and press flat. Repeat for the other set of wide gathered straps.

2. Gather shoulder strap: using a 4-mm to 5-mm-long gathering stitch, sew two lines of stitching within the seam allowance on each short end of the wide gathered straps. Sew the first line of gathering stitches ½ in (1.3 cm) from the raw edge and the second line ¼ in (6 mm) from the raw edge. Do not backstitch to lock your stitches. Pull up bobbin threads to gather.

3. Attach shoulder gathered strap to bodice: pin one raw edge of wide gathered strap to shoulder attachment raw edge of bodice center front between placement circles, RS together, evenly spreading gathers. Pin the opposite raw edge to the shoulder attachment edge of the bodice center back between placement circles, RS together, evenly spreading gathers and being careful not to twist the strap. Stitch with a ½-in (1.3 cm) seam allowance. **NOTE:** *because the wide straps are not adjustable once the lining is sewn in, it's a good idea to try on your bodice now to check the strap length and adjust if needed.*

Continue to the Bodice Lining & Zipper section.

Bodice Lining & Zipper

1. Prepare to attach lining with the clean finish

method: pin lining to outer bodice around neckline and underarm, RS together, tucking the shoulder straps inside. At zipper opening's top edge, working with bodice back lining up, fold seam allowances as follows: on right half of opening (the underlap), fold both seam allowances $\frac{1}{2}$ in (1.3 cm) to WS of lining. The lining seam allowance is nested inside the outer fabric seam allowance. On opening's left half (the overlap), fold lining seam allowance $\frac{7}{8}$ in (2.2 cm) to WS. Fold outer fabric seam allowance $\frac{5}{8}$ in (1.5 cm) to WS. The seam allowances nest inside each other with a $\frac{1}{4}$ -in (6 mm) gap between the two. Folding seam allowances this way ensures lining is finished neatly around lapped zipper at neckline. **NOTE:** *be sure to watch this month's companion tutorial video for visuals on this step.*

2. Sew lining to bodice: stitch around neckline, shoulder strap attachment points, and underarms, starting at one folded CB edge and ending at the other folded edge. Be sure to pivot at each corner of the shoulder strap attachment point and stitch straight across each shoulder strap. Grade seam allowances so those on the bodice are wider and those on the lining are narrower. Clip into curves every $\frac{1}{2}$ in (1.3 cm).

3. Understitch neckline and underarms: from RS, with lining opened out from bodice and seam allowances underneath, stitch the lining $\frac{1}{8}$ in (3 mm) from the seamline, catching seam allowances in stitching. Start understitching at CB opening and end at opposite side, breaking stitching at shoulder strap attachment points as necessary. Turn lining to bodice WS and press neckline edge, rolling seamline slightly so it is hidden inside the bodice.

4. Attach bodice to Lamour-series bottom or gathered skirt: follow the instructions to create your Lamour-series skirt, pants, or shorts, omitting the waistband or waist facing. Alternatively, create a simple gathered skirt, leaving an opening at CB for the zipper. Pin the bodice to your chosen bottom garment at the waist, matching side seams. Stitch. Grade the waistline seam allowances, clip into curves, and press toward the bodice.

5. Sew underlap half of zipper, leaving lining

free: with garment RS out and lining out of the way, on right half of opening (the underlap), press zipper opening seam allowance $\frac{1}{2}$ in (1.3 cm) to WS. With zipper closed, pin zipper under pressed seam allowance, placing zipper teeth just left of fabric fold. The top zipper stop should be positioned just below where the lining meets the dress at the neckline. Open zipper halfway. Using a zipper foot, stitch from top to bottom next to zipper teeth, just on the fold. As needle approaches zipper pull, stop stitching with needle in the fabric and close zipper; resume stitching to base. Backstitch.

6. Sew overlap half of zipper, leaving lining free:

on left half of zipper opening (the overlap), press seam allowance under $\frac{5}{8}$ in (1.5 cm). With zipper closed, position overlap over zipper teeth so fabric fold just covers stitching on underlap. Pin overlap to zipper tape. Open zipper and topstitch overlap $\frac{3}{8}$ in (1 cm) from fold, closing zipper when you reach the pull; finish stitching to base. Pivot the work and stitch across base of zipper opening.

7. Finish the lining at the zipper and waistline:

turn under the bodice lining at the waistline, turning the staystitching just to WS. Pin and slipstitch the bodice lining to the waistline seam. Turn under the bodice lining seam allowances at the zipper opening and pin in place. Hand slipstitch the lining to the zipper tape.

8. Hem and finish garment: follow the instructions on your skirt, pants, or shorts pattern to hem and finish the garment. For a gathered skirt, finish raw edge of hem by desired method. Fold and press the edge under $\frac{5}{8}$ in (1.5 cm). Topstitch $\frac{1}{2}$ in (1.3 cm) from fold. Press hem flat.

Enjoy your dreamy new Barbara Bodice!

PATTERN PIECE LOCATION GUIDE

Here is a list to help you locate the pattern pieces on the letter-size tiled pages and A0 pattern sheets.
The tiled pieces and A0 sheets are included as separate pdf files as part of this digital pattern.

SIZES 2-20

PC#	Piece Name	Tiled	A0
1	Bodice Center Front, Thin Strap, A Cup	4-6	2
1	Bodice Center Front, Thin Strap, B-DD Cup	6-8	2
1	Bodice Center Front, Thin Strap, F-H Cup	9-11	2
2	Bodice Center Front, Wide Strap, A Cup	26-28	2
2	Bodice Center Front, Wide Strap, B-DD Cup	28-30	2
2	Bodice Center Front, Wide Strap, F-H Cup	31-33	2
3	Bodice Side Front, A Cup	13-15	1
3	Bodice Side Front, B/C Cup	15-17	1
3	Bodice Side Front, D/DD Cup	17-18	1
3	Bodice Side Front, F/G Cup	19-20	1
3	Bodice Side Front, H Cup	21-22	1
4	Bodice Center Back, Thin Strap	1-2	1
5	Bodice Center Back, Wide Strap	23-24	1
6	Bodice Side Back	12-13	1
7	Thin Tie Strap	2-5	1
8	Wide Gathered Strap	24-26	1

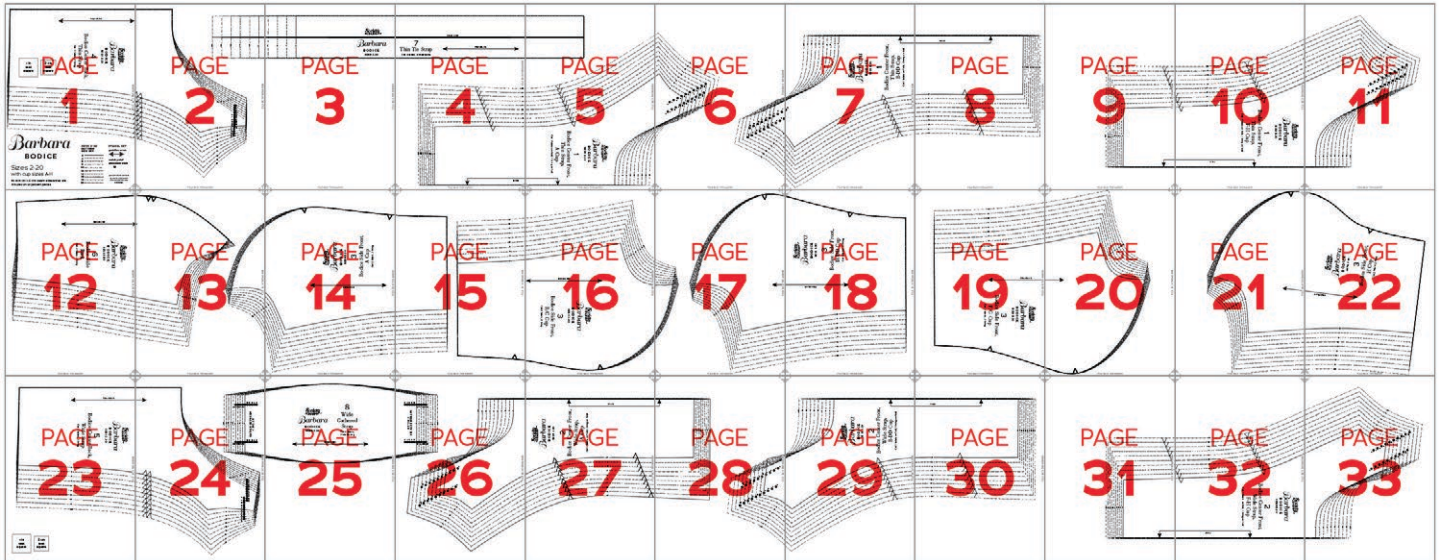
SIZES 18-34

PC#	Piece Name	Tiled	A0
1	Bodice Center Front, Thin Strap, A/B Cup	1-3	2
1	Bodice Center Front, Thin Strap, C-D/DD Cup	5-8	2
1	Bodice Center Front, Thin Strap, F/G Cup	7-10	2
1	Bodice Center Front, Thin Strap, H Cup	10-12	3
2	Bodice Center Front, Wide Strap, A/B Cup	15-17	2
2	Bodice Center Front, Wide Strap, C-D/DD Cup	17-19	2
2	Bodice Center Front, Wide Strap, F/G Cup	19-22	2
2	Bodice Center Front, Wide Strap, H Cup	11-12, 22-24	3
3	Bodice, A/B Cup	13-14, 25-26	1
3	Bodice, C Cup	15-16, 27-28	1
3	Bodice, D/DD Cup	17-18, 29-30	1
3	Bodice, F/G Cup	21-22, 32-34	1
3	Bodice, H Cup	22-23, 34-35	1
4	Bodice Center Back, Thin Strap	3-5	3
5	Bodice Center Back, Wide Strap	13-14	3
6	Bodice Side Back	18-19, 30-32	1
7	Thin Tie Strap	1-4	3
8	Wide Gathered Strap	24, 36	3

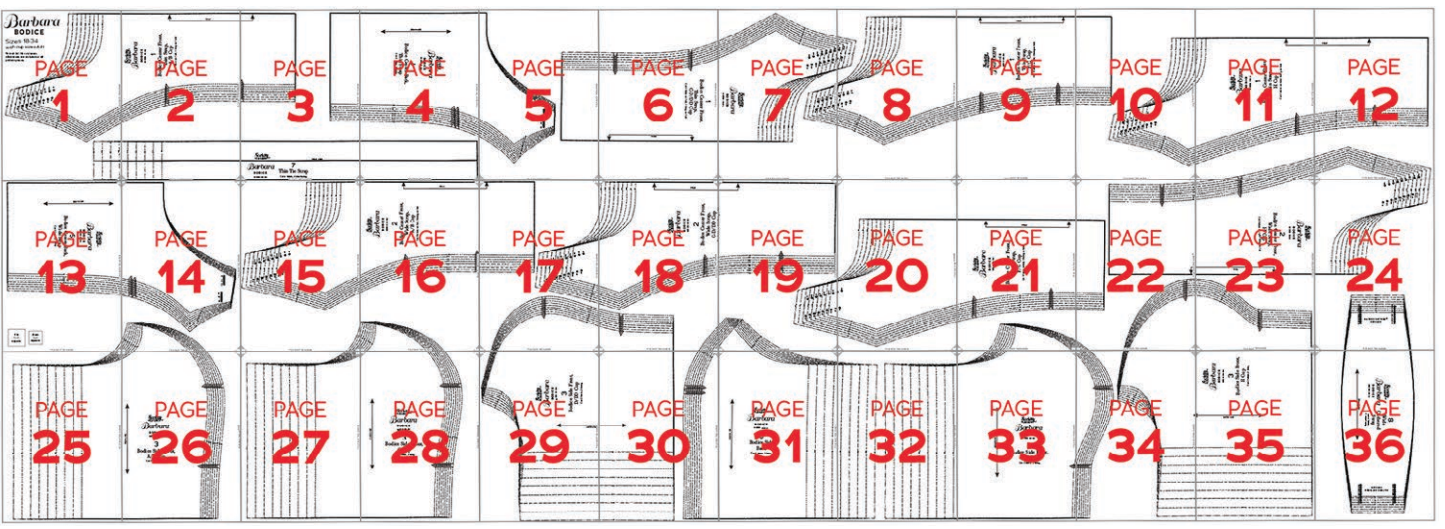


TILING MAPS

Sizes 2-20



Sizes 18-34



HOW TO USE THIS PATTERN

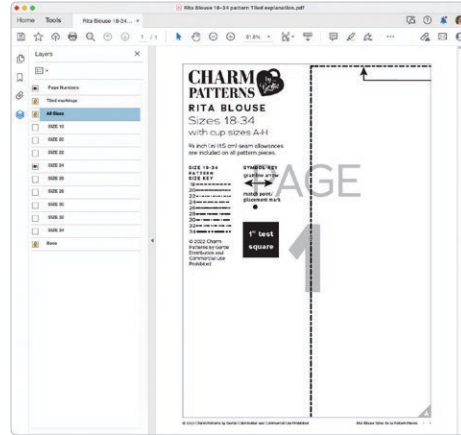
The pattern pieces are tiled so you can print them on Letter (8½" x 11") or A4 size paper. You can also send the A0 pattern sheet PDF to a local or online printer (like ThePlottedPattern.com) to print on large sheets (36" x 48" for U.S. or A0 for international).

This pattern includes size layers. To get the best results, open either the Tiled or A0 pattern pieces PDF in [Acrobat Reader](#).

Open the Layers Palette (View>Show/Hide>Navigation Panes>Layers) and hide all of the layer(s) except for the ones you want to print by clicking on the eye icon.

The All Sizes and Tiled Markings layers have general pattern information and will always print.

You may choose to turn off the Page Numbers layer. The page numbers will still appear at the bottom of each page in the footer.



WORKING WITH THE TILED PIECES

Go to File>Print and change the page range to the pages you need for the pieces you've chosen (see Pattern Pieces Printing Index). Make sure the Page Sizing settings to 100% or Actual Size. Test this after printing by measuring the 1" test box on the first page of the pattern pieces.

Cut apart any pattern pieces that share a page, then fold back or cut off the page margins on each page as marked.

Match the letters in the gray corner diamonds. Tape the pages together, butting up the folded or cut page edges with the gray margin lines.

MORE FROM GERTIE

[At CharmPatterns.com](http://CharmPatterns.com): Shop my sewing patterns and accessories.

[On YouTube](#): Learn beginner and advanced sewing skills and techniques through my tutorials and watch episodes of my Gertie's World series.

[On Instagram](#): Stay in the loop and get inspired.

[On Patreon](#): Access monthly patterns and tutorial videos.





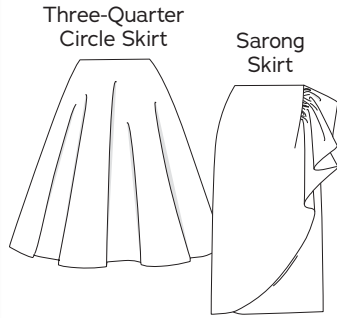
MIX & MATCH

THE LAMOUR SERIES

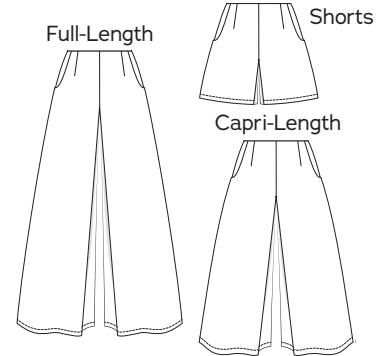
The following patterns can be interchanged with the Barbara Bodice.
Find more at CharmPatterns.com/mix-and-match.



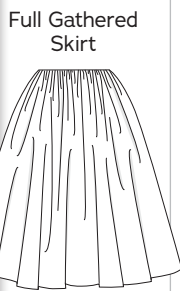
LAMOUR DRESS



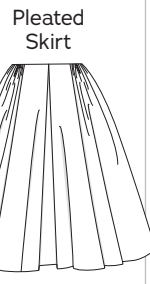
ELSA CULOTTES



LIZ DRESS



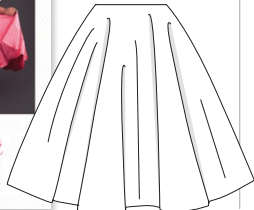
LANA DRESS



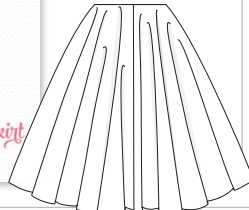
WANDA SKIRT



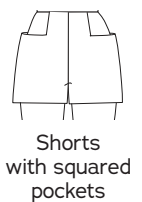
CHARM CIRCLE SKIRT



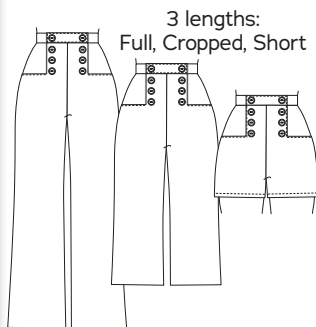
CHARM DOUBLE CIRCLE SKIRT



LORETTA SHORTS



GINGER SAILOR PANTS



DANDRIDGE SKIRT

