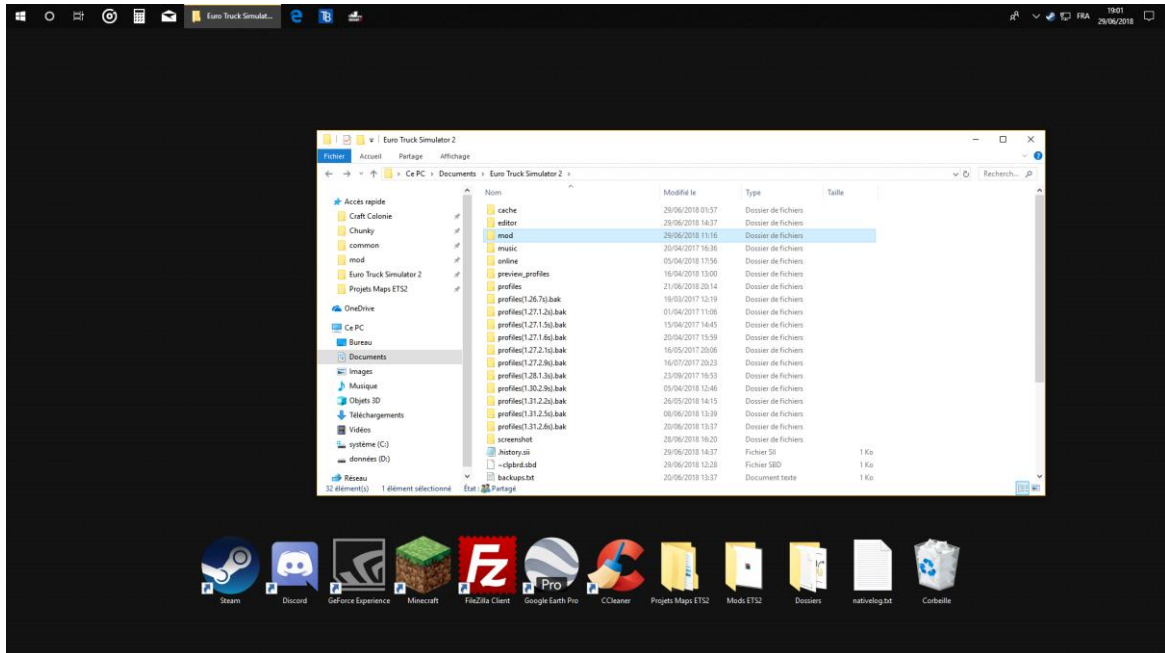


# HOW TO INSTALL GRAND UTOPIA

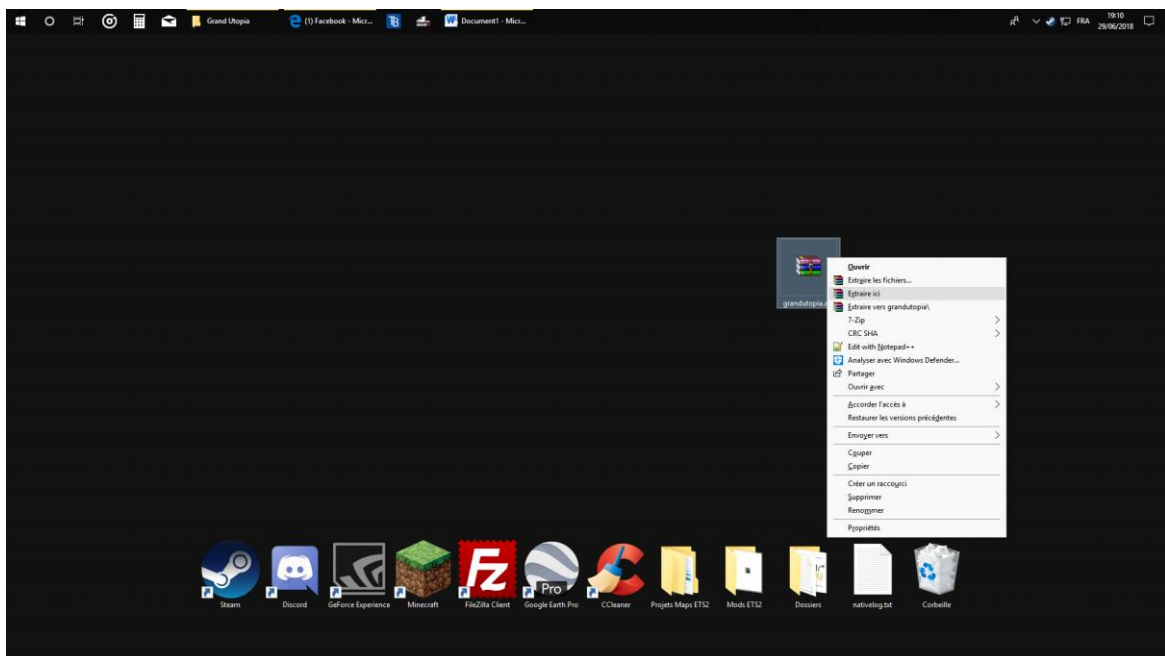
GRAND UTOPIA – Map pour ETS2

## STEP 1 : FIND AND OPEN YOU MOD FOLDER

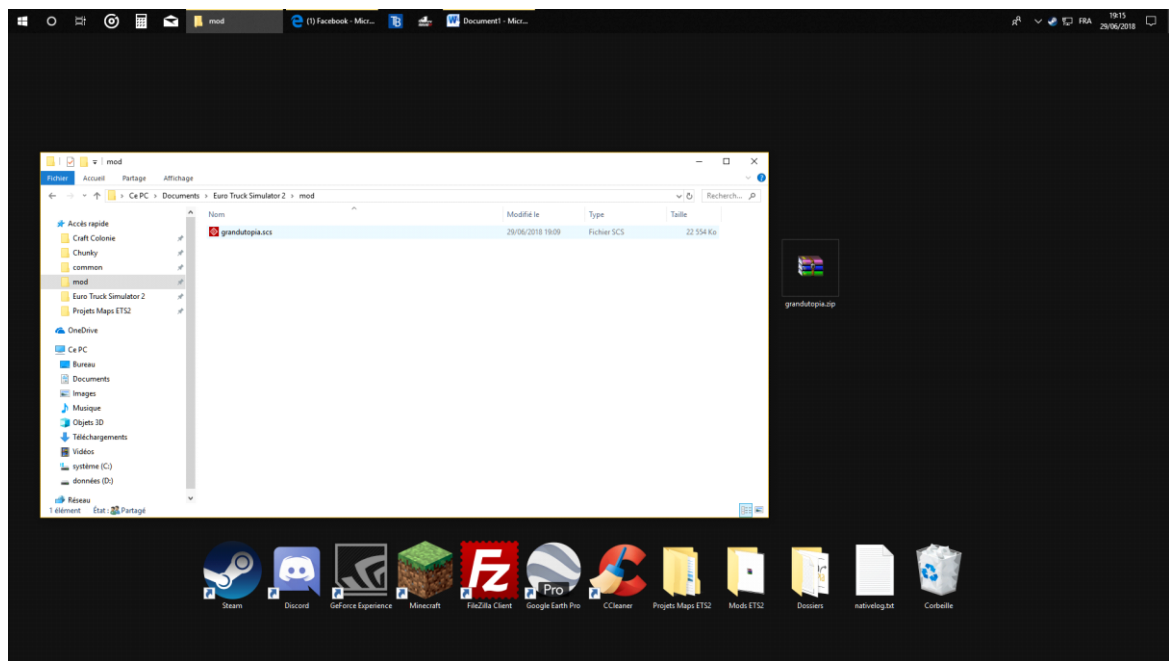
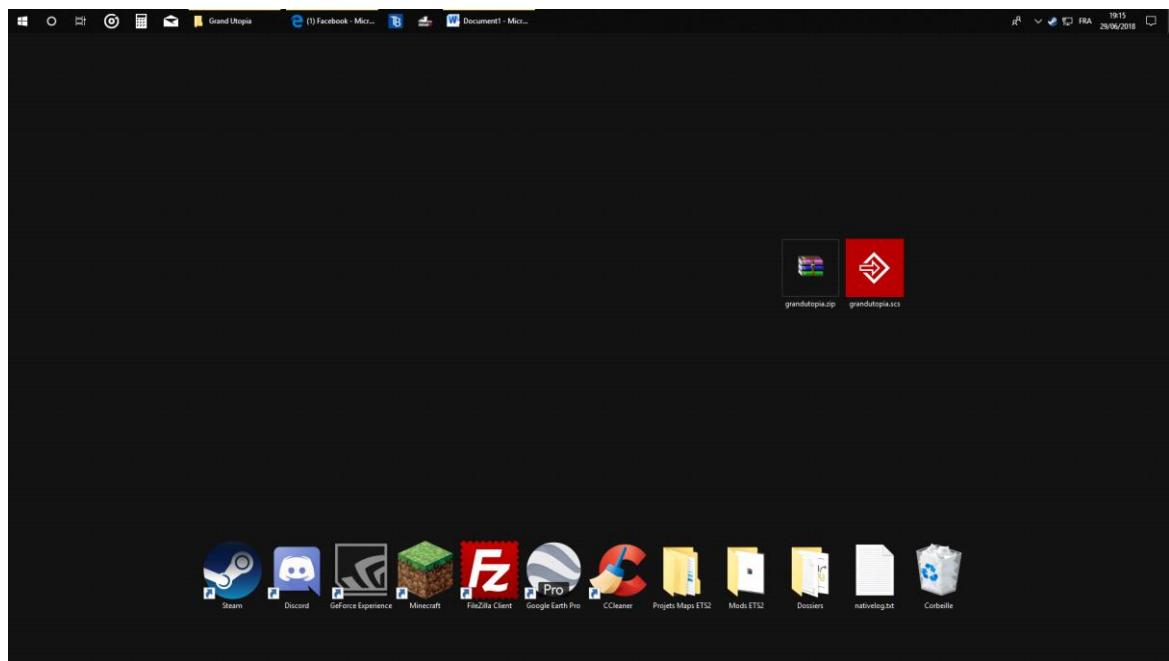
Here's the path : MyDocuments > Euro Truck Simulator 2 > mod.



## STEP 2 : EXTRACT GRANDUTOPIA.ZIP



## STEP 3 : PLACE THE FILE grandutopia.scs IN YOUR MOD FOLDER

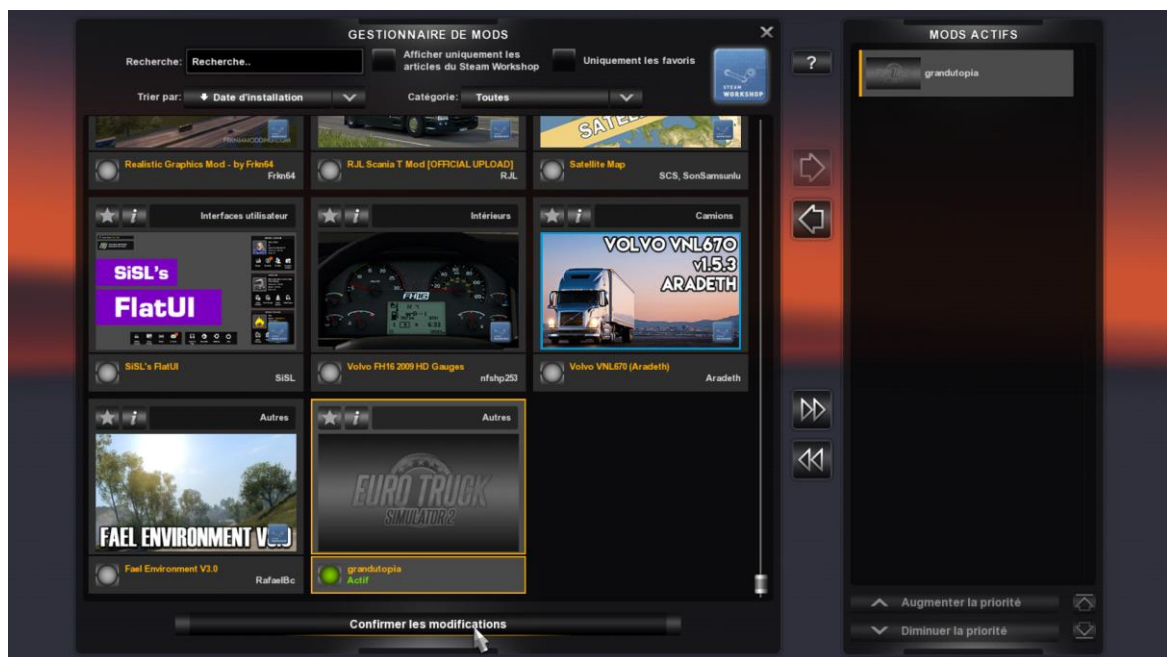


#### **STEP 4 : LAUNCH ETS2 ET CREATE A NEW PROFILE**

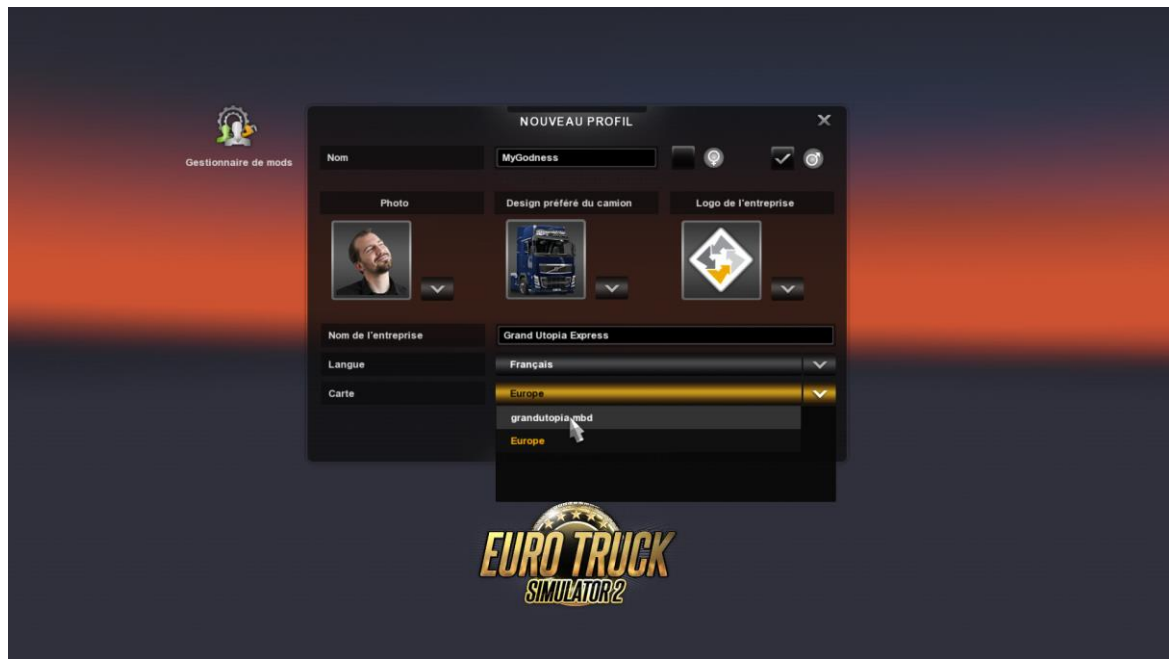
Before starting the game, you must go in the mod administrator, in the up left corner.



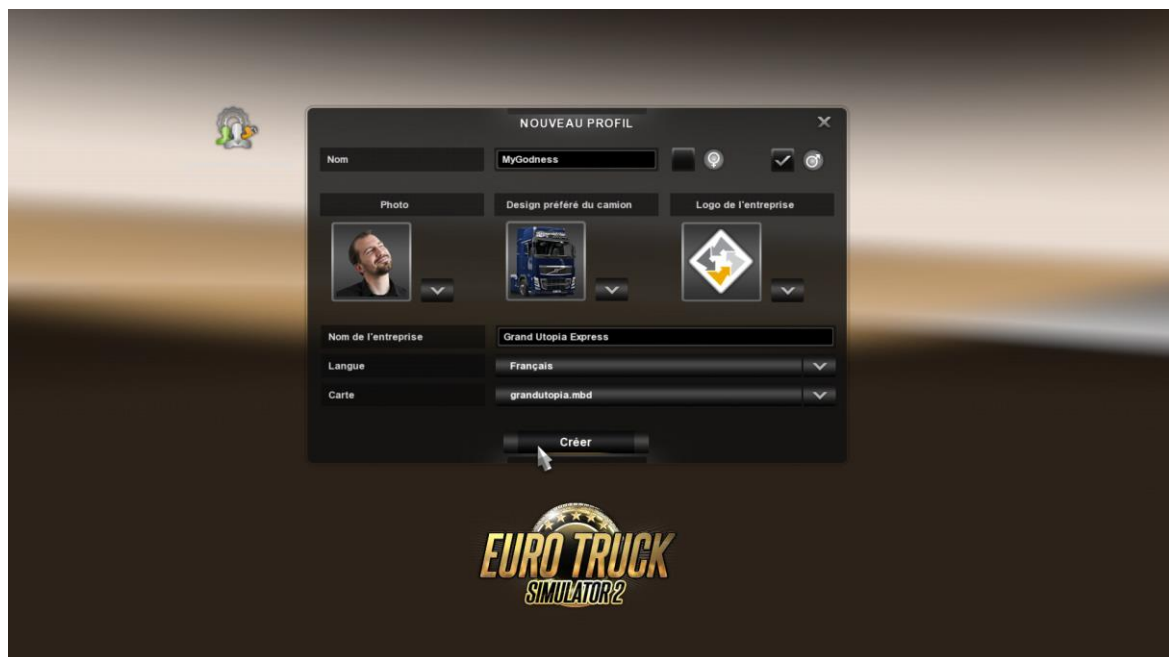
Find Grand Utopia and activate it. Then confirm.



Now you can click on « Map » et select grandutopia.mbd



Then, just click on « Start ».



And it's time to play ! ;)