



Judy Vest

Sizes 18-34
with cup sizes A-H

5/8 inch (in) (1.5 cm) seam allowances
are included on all pattern pieces.

SIZE 18-34 PATTERN SIZE KEY

- 18 - - - - -
- 20
- 22 - . - . - . - .
- 24 - - - - -
- 26 - - - - -
- 28 - . - . - . - .
- 30 - - - - -
- 32 - . - . - . - .
- 34 - - - - -

SYMBOL KEY

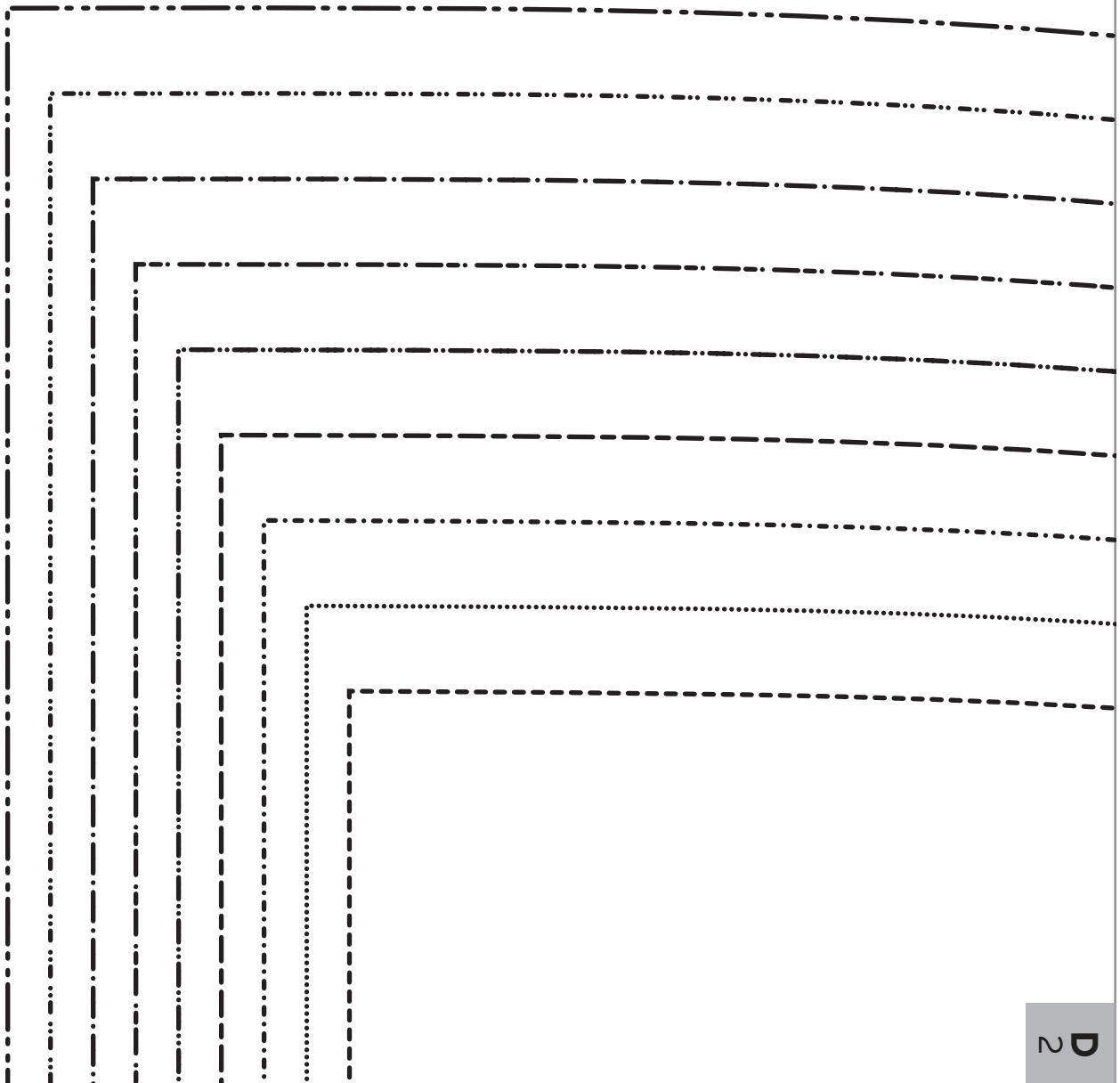
grainline arrow

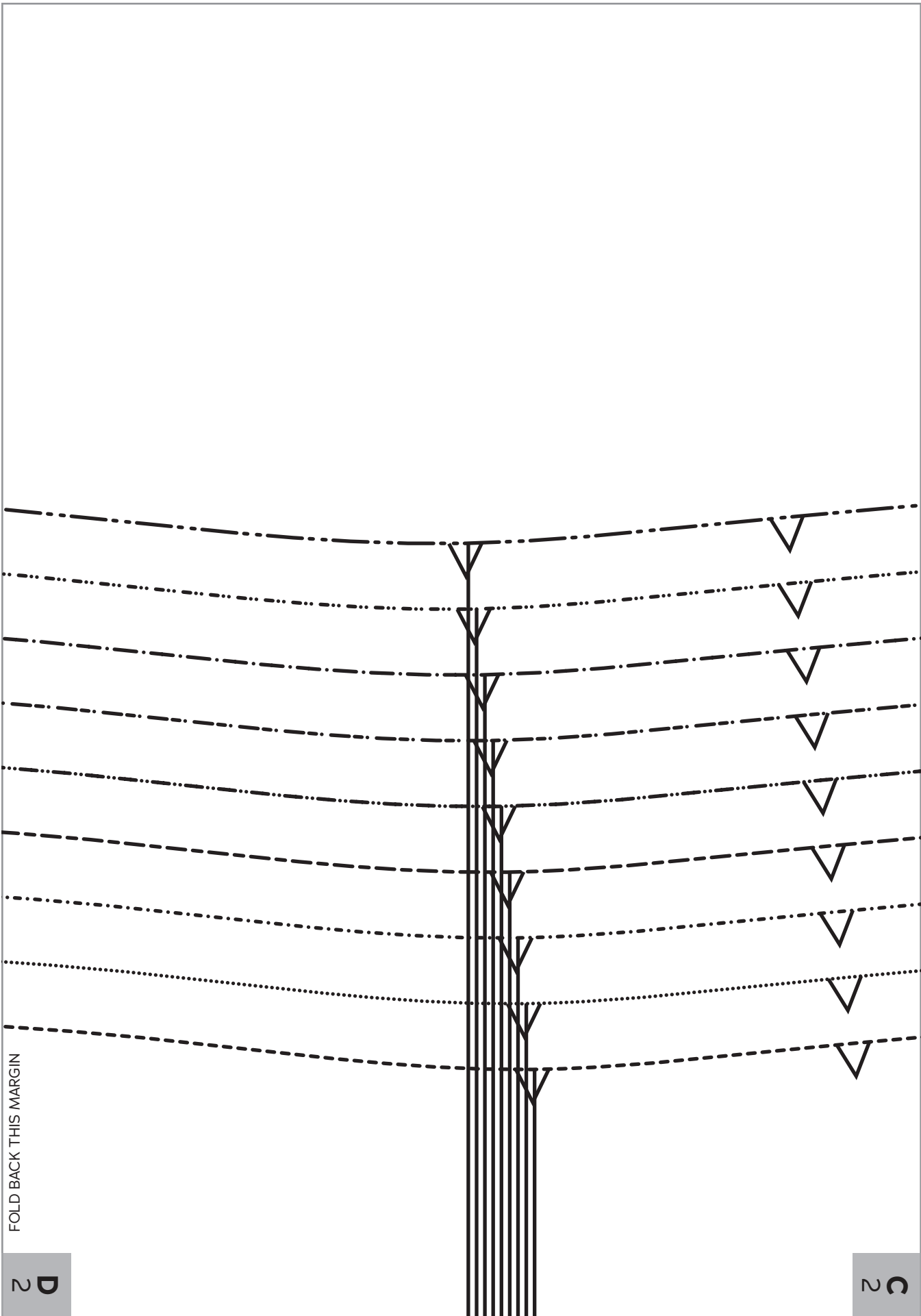


match point/
placement mark



**1" test
square**

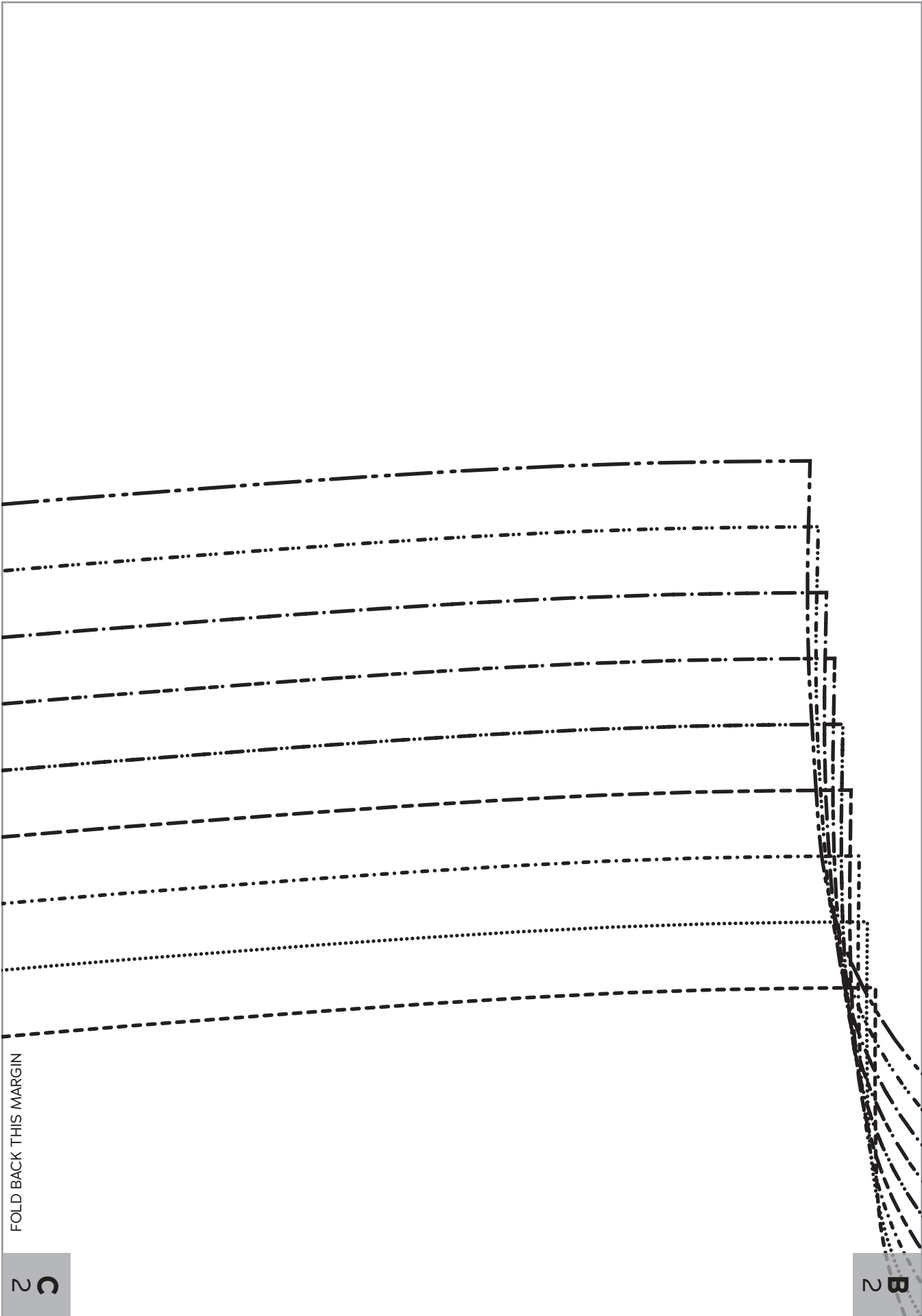




FOLD BACK THIS MARGIN

2 D

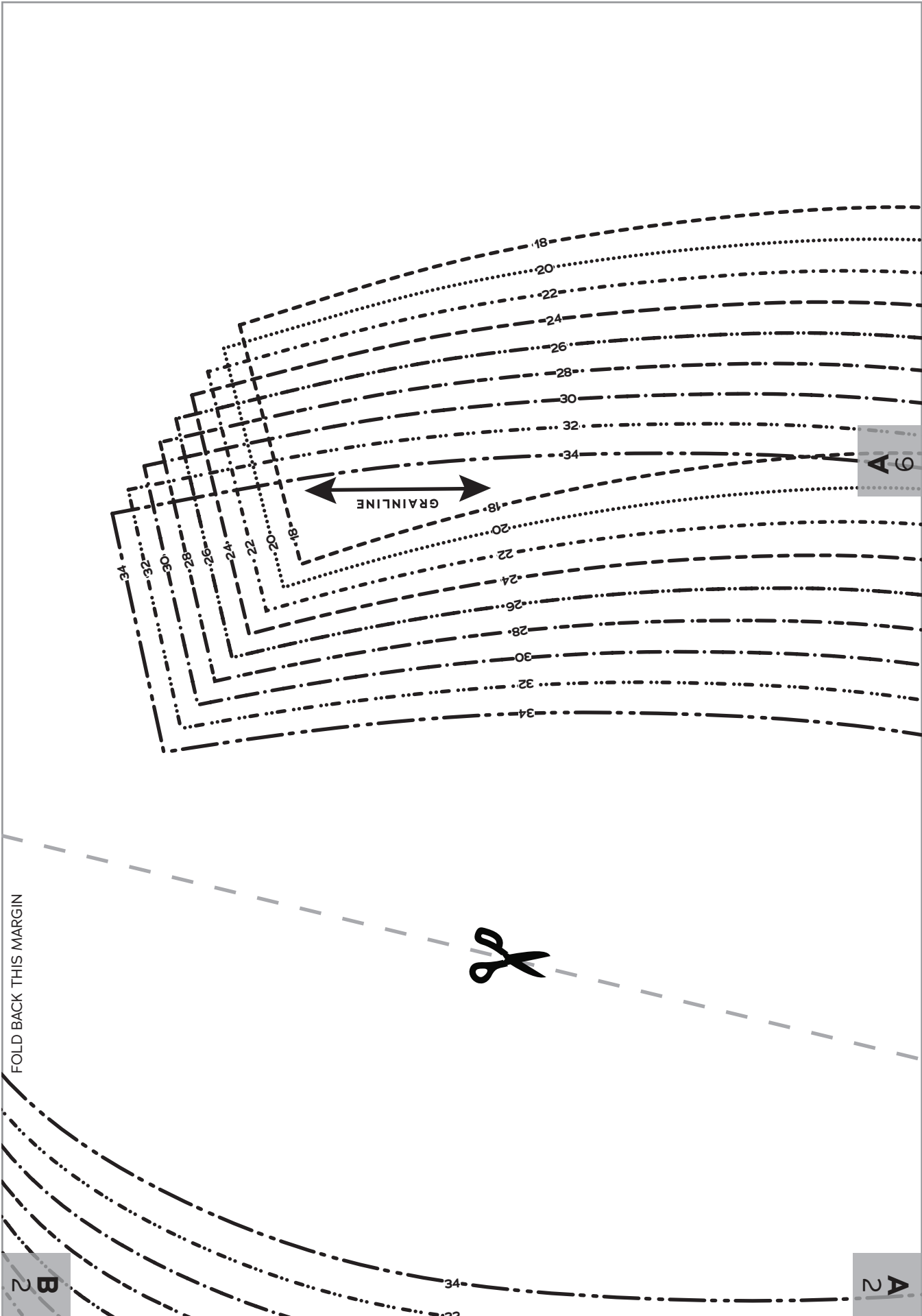
2 C



FOLD BACK THIS MARGIN

C
2

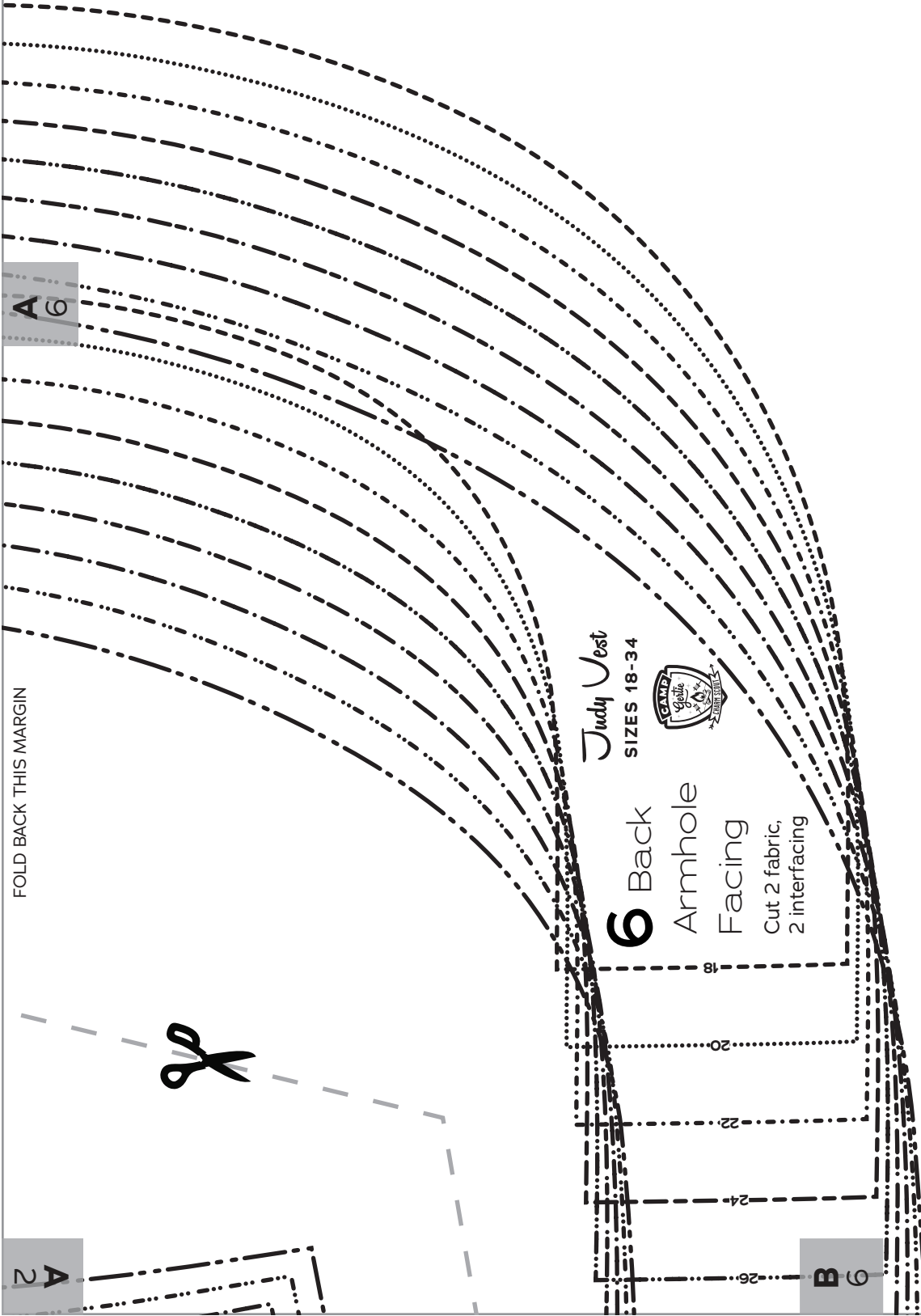
B
2



FOLD BACK THIS MARGIN

B
2

A
2



FOLD BACK THIS MARGIN

A 6

A 2

Judy Vest
SIZES 18-34



6 Back
Armhole
Facing
Cut 2 fabric,
2 interfacing

18

20

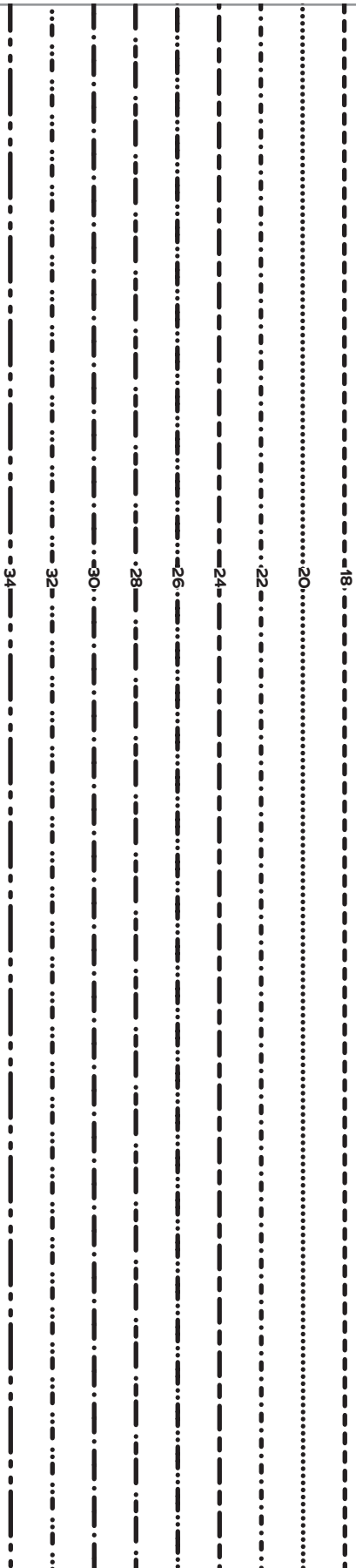
22

24

26

B 6

FOLD BACK THIS MARGIN



C
2

FOLD BACK THIS MARGIN

SHORTEN/LENGTHEN LINE

18
20
22
24
26
28
30
32
34

D
2

FOLD BACK THIS MARGIN

FOLD BACK THIS MARGIN

FOLD BACK THIS MARGIN



Judy Vest
 SIZES 18-34

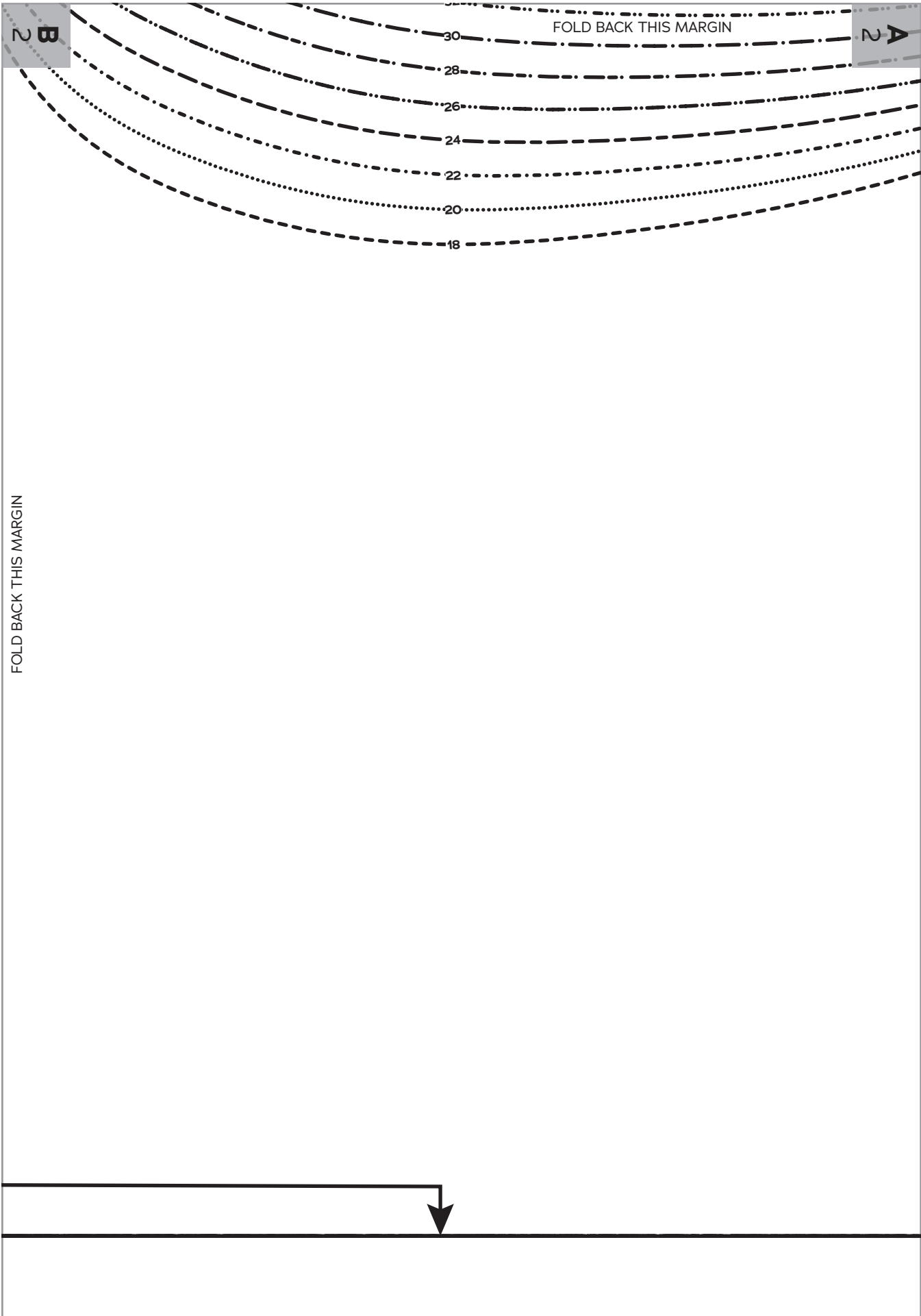
2

Vest
 Back

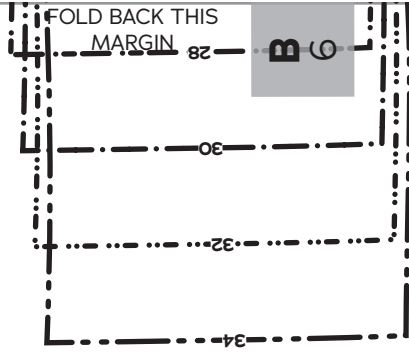
Cut 1 fabric on fold

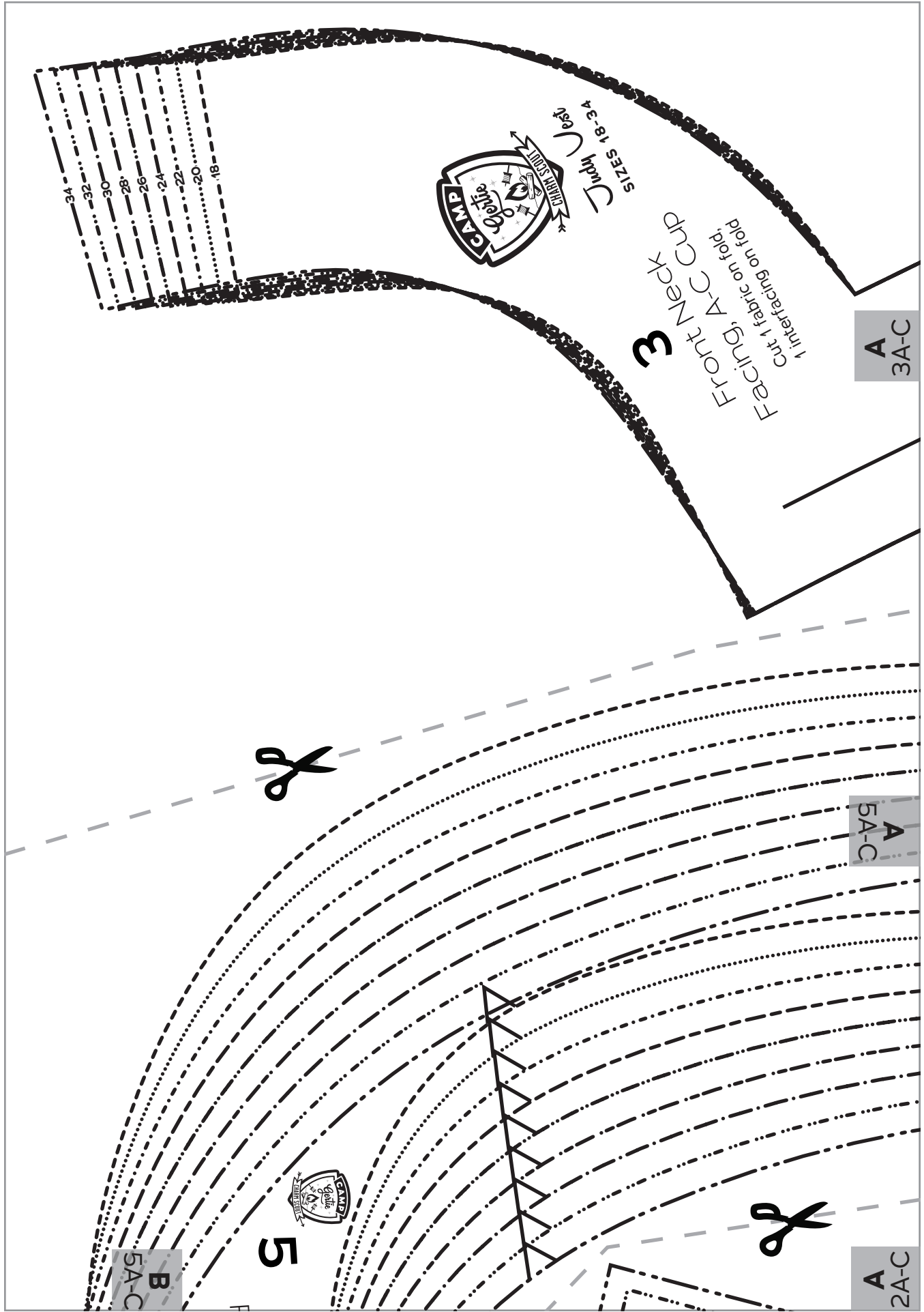
FOLD





FOLD BACK THIS MARGIN





A
3A-C

3
Front Neck
Facing, A-C Cup
cut 1 fabric on fold,
1 interfacing on fold



34
32
30
28
26
24
22
20
18

A
5A-C



5

A
2A-C

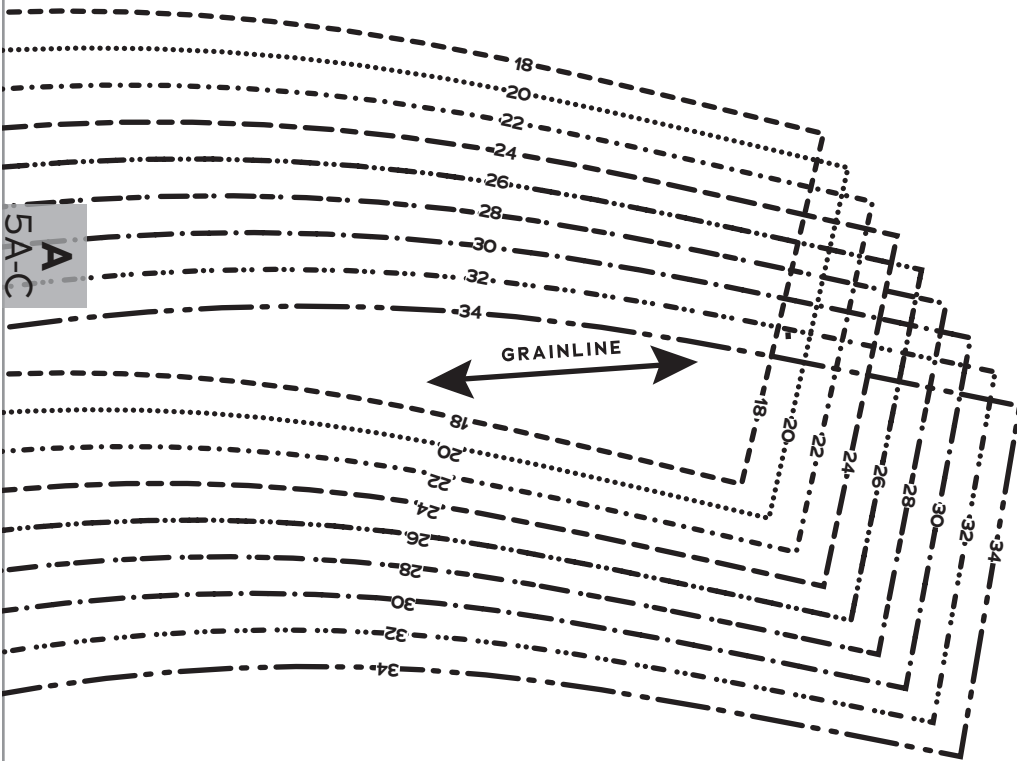


B
5A-C

FOLD BACK THIS MARGIN

A
3A-C

FOLD

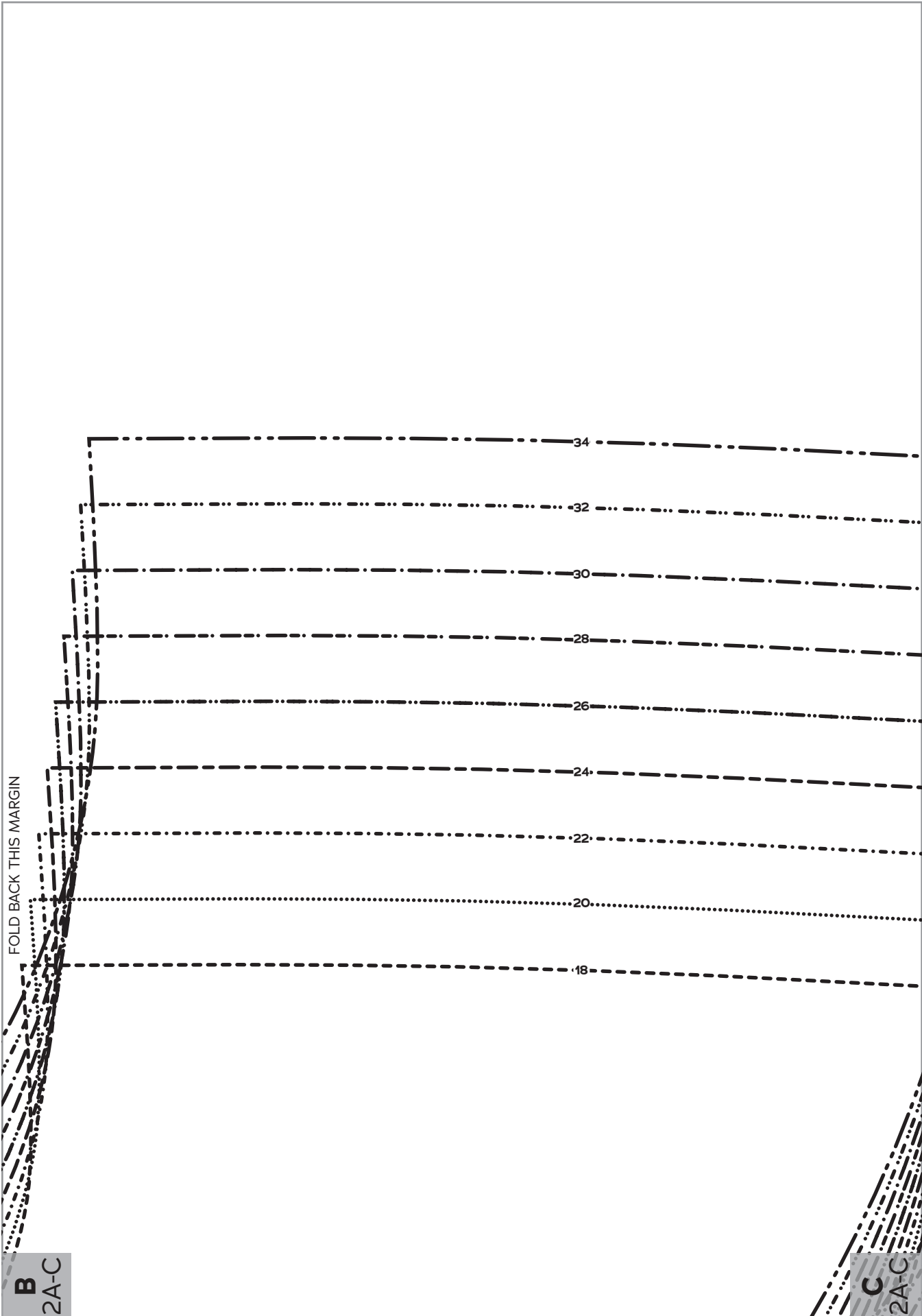


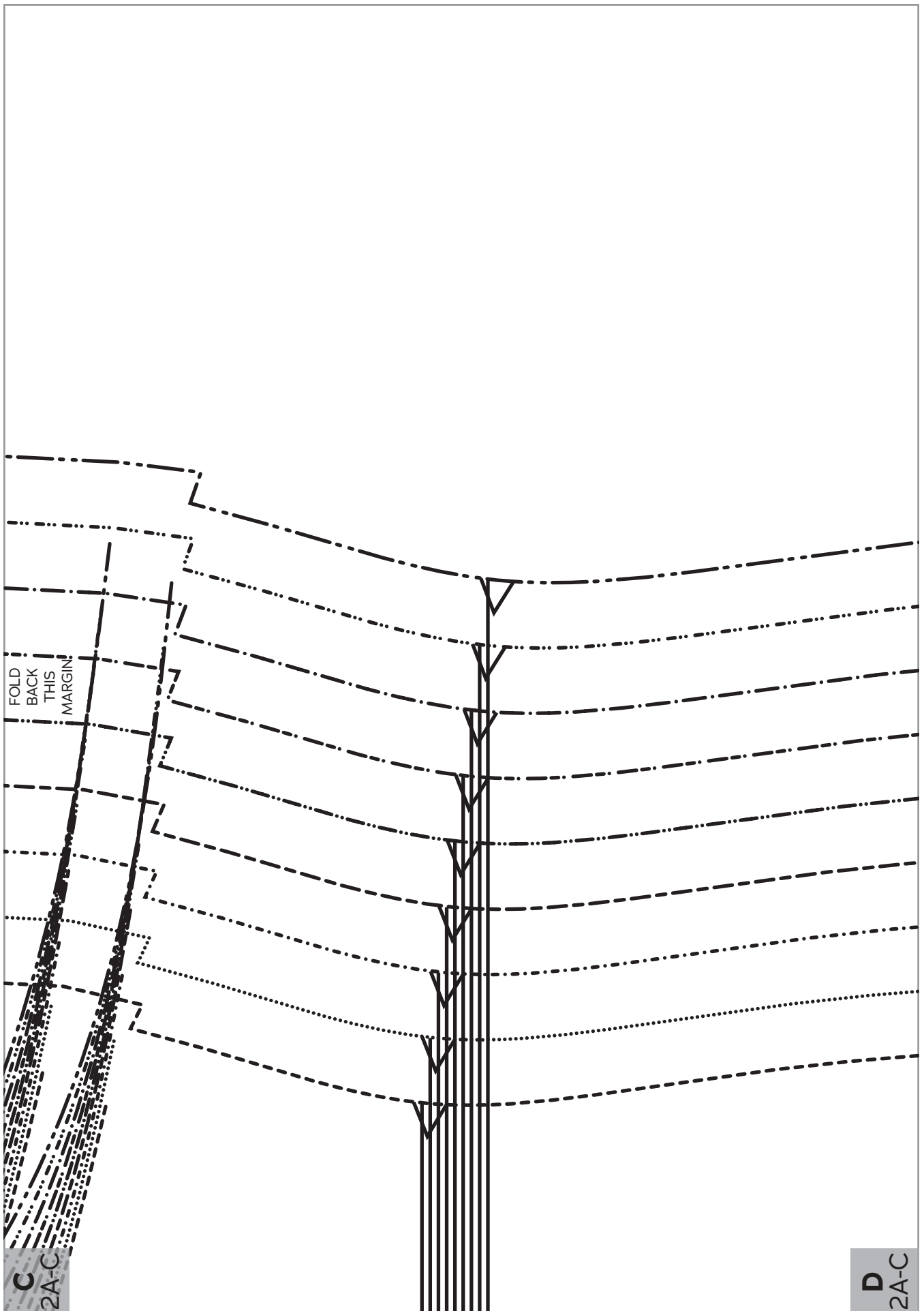
A
5A-C



A
2A-C

B
2A-C

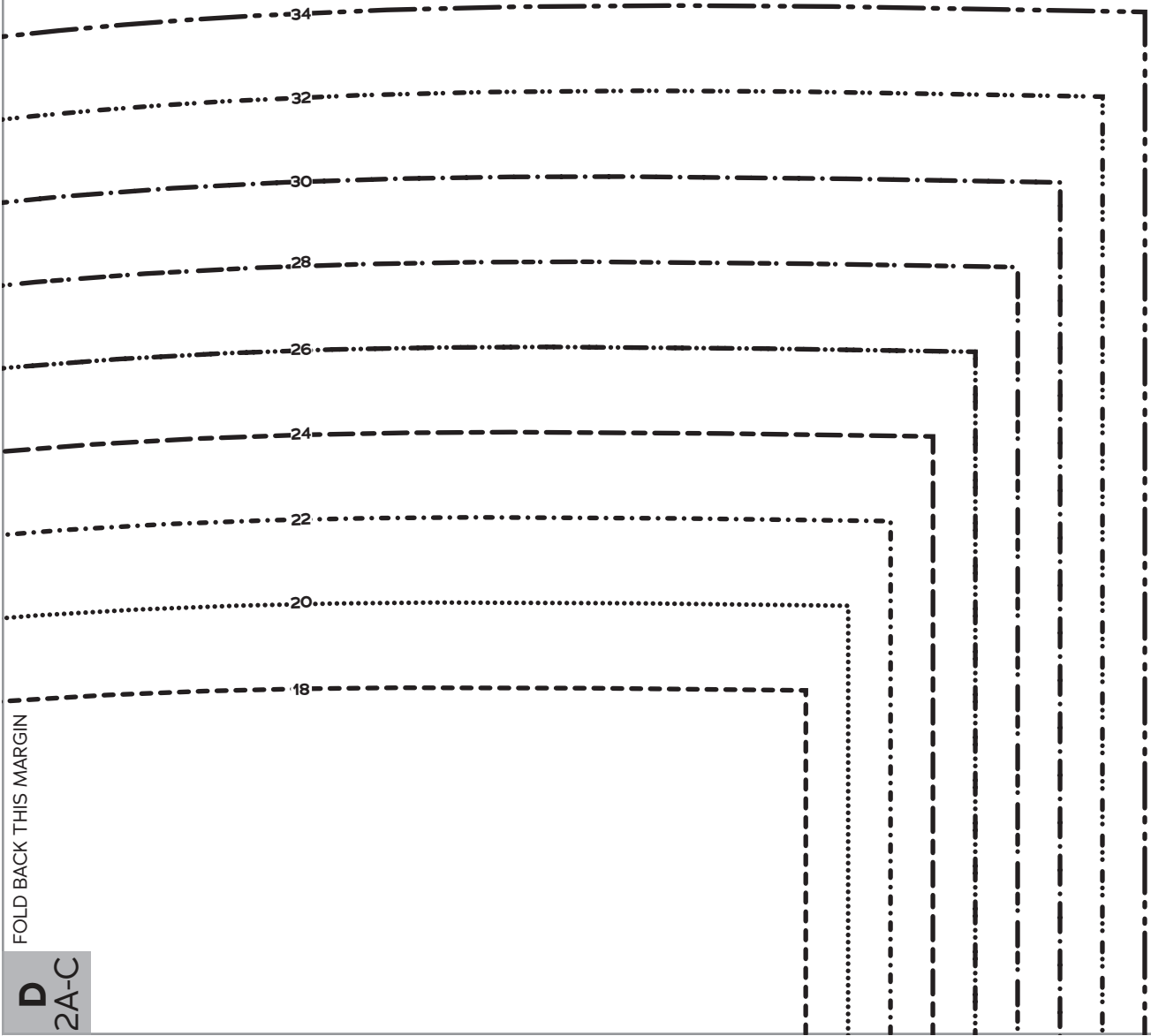




FOLD
BACK
THIS
MARGIN

C
2A-C

D
2A-C



FOLD BACK THIS MARGIN

D
2A-C

A
2A-C

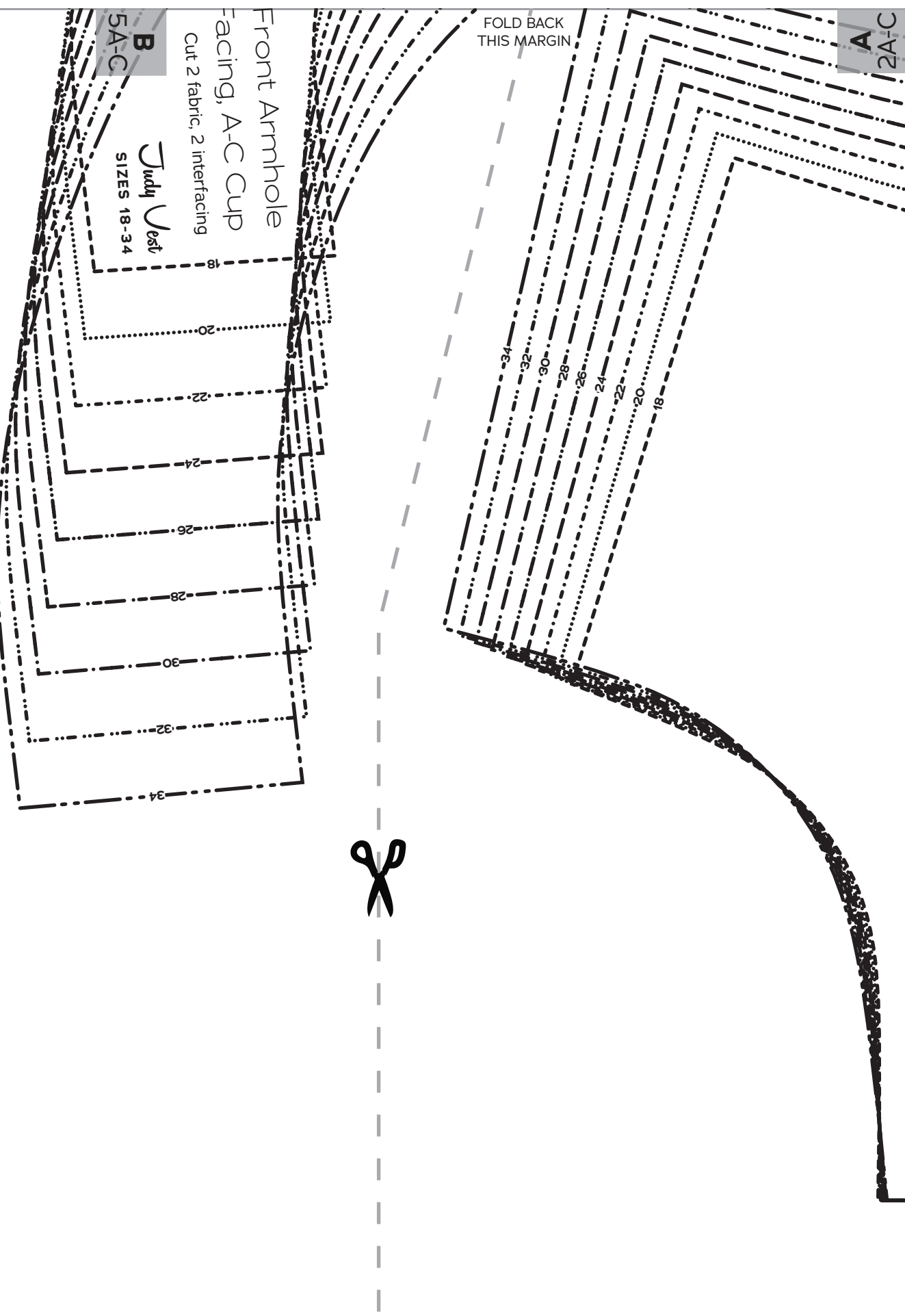
FOLD BACK
THIS MARGIN

Front Armhole
Facing, A-C Cup

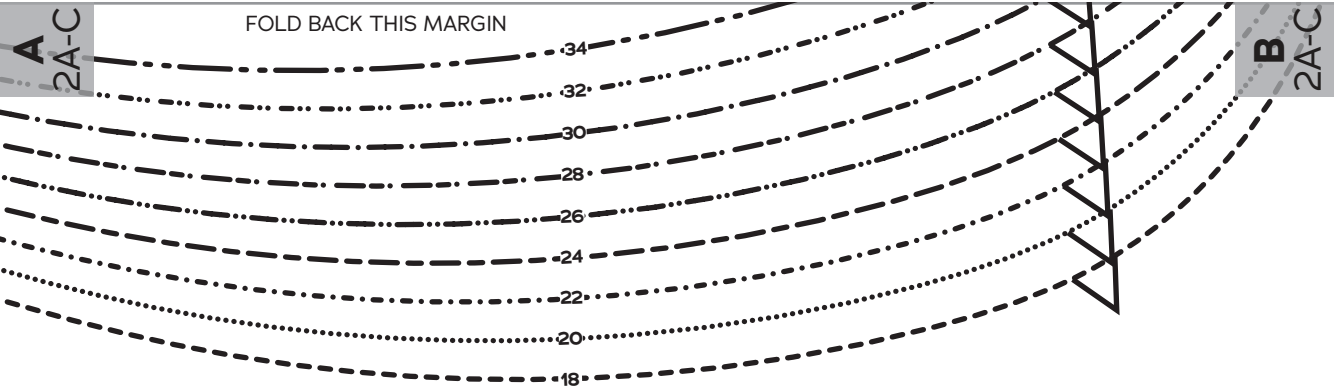
Cut 2 fabric, 2 interfacing

B
5A-C

Judy Vest
SIZES 18-34



FOLD BACK THIS MARGIN



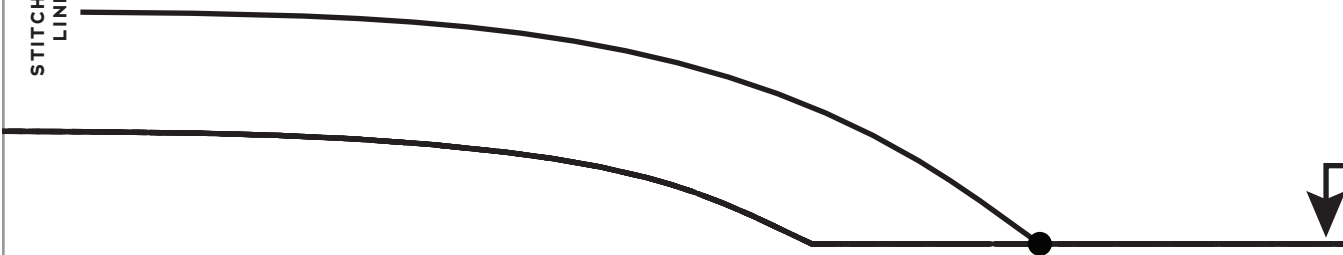
Judy Vest
SIZES 18-34

1

Vest
Front,
A-C Cup

Cut 1 fabric on fold

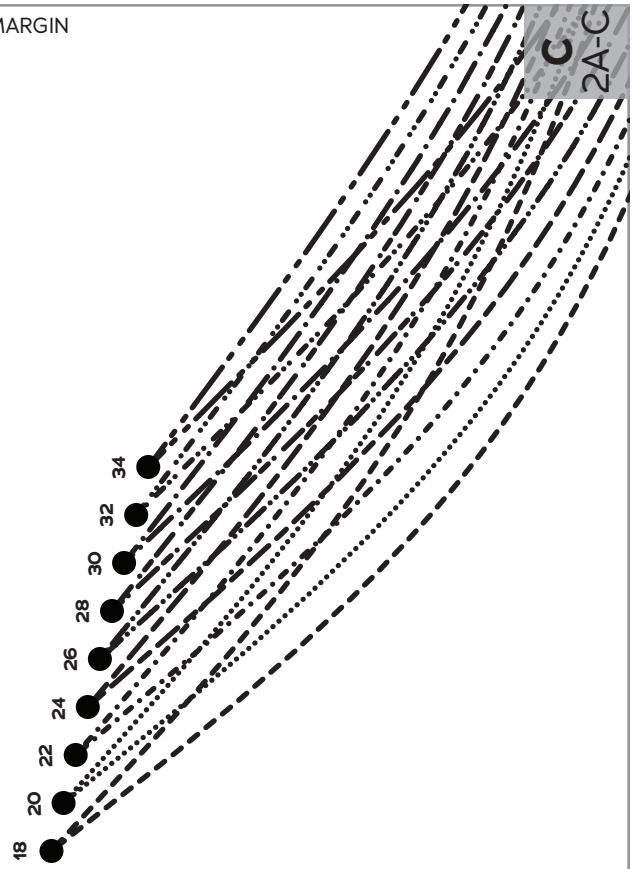
STITCHING
LINE



B
2A-C

FOLD BACK THIS MARGIN

FOLD BACK THIS MARGIN



FOLD

C
2A-C

FOLD BACK THIS MARGIN

D
2A-C

FOLD BACK THIS MARGIN

SHORTEN/LENGTHEN LINE

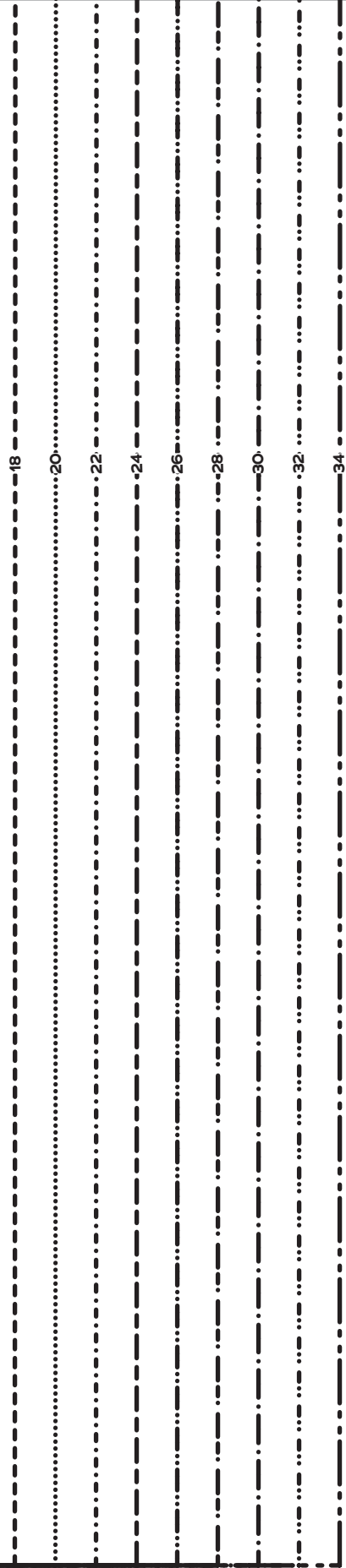
18 20 22 24 26 28 30 32 34

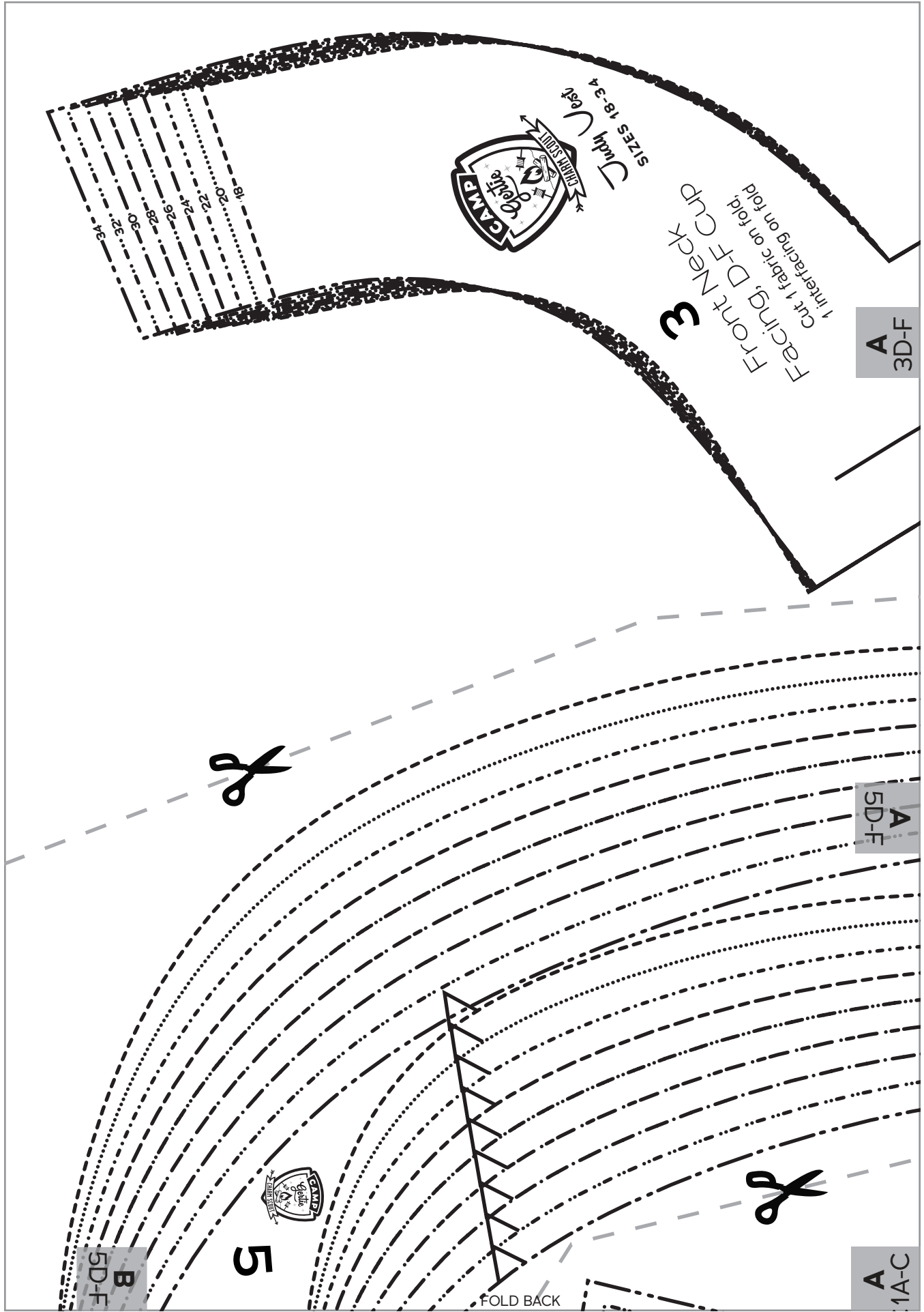


FOLD BACK THIS MARGIN

D
2A-C

FOLD BACK THIS MARGIN





Front Neck Cup
Facing, D-F Cup
Cut 1 fabric on fold,
1 Interfacing on fold

SIZES 18-34
CUT HERE



18
20
22
24
26
28
30
32
34

A
3D-F

A
5D-F

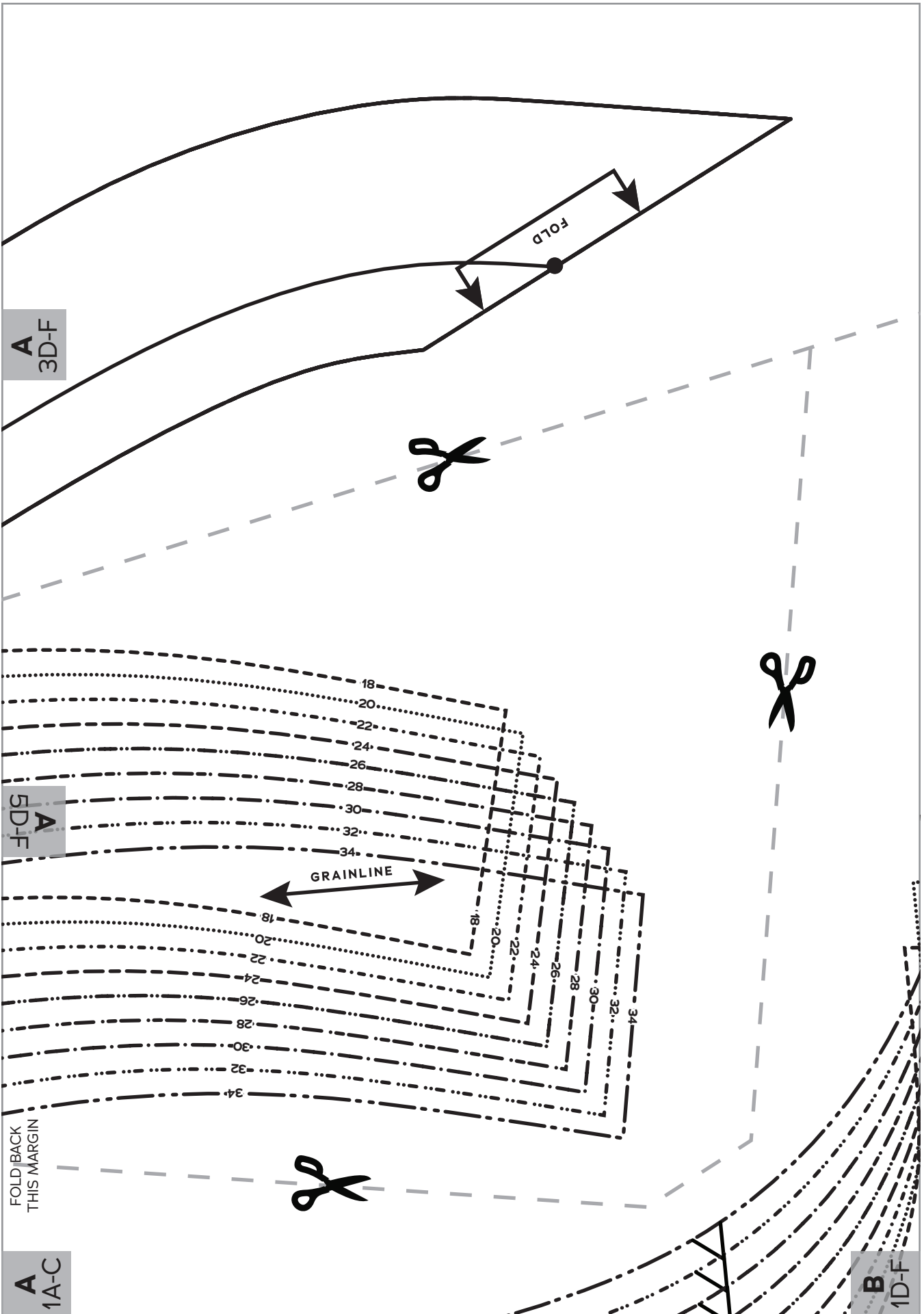
A
1A-C

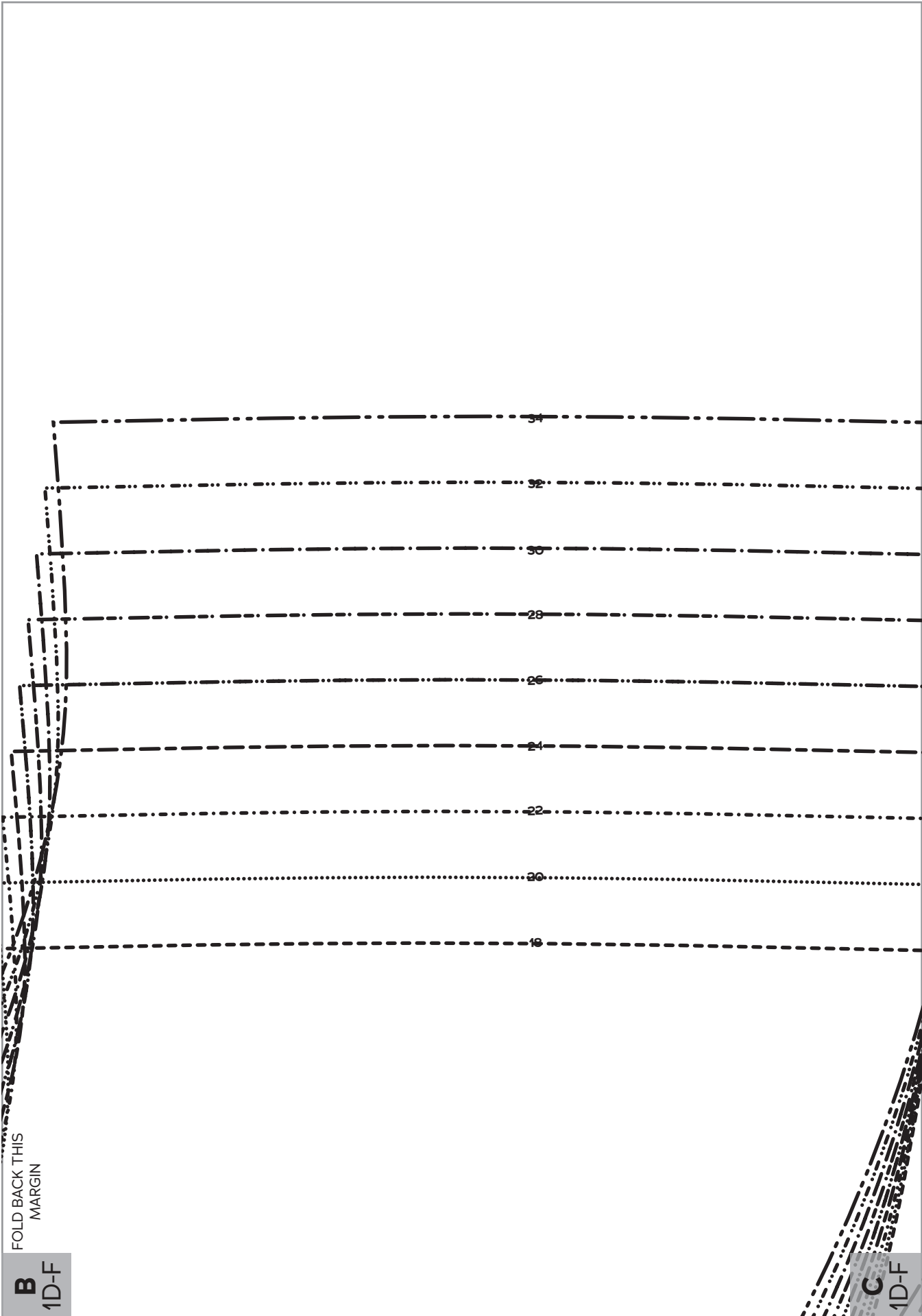


5

B
5D-F

FOLD BACK

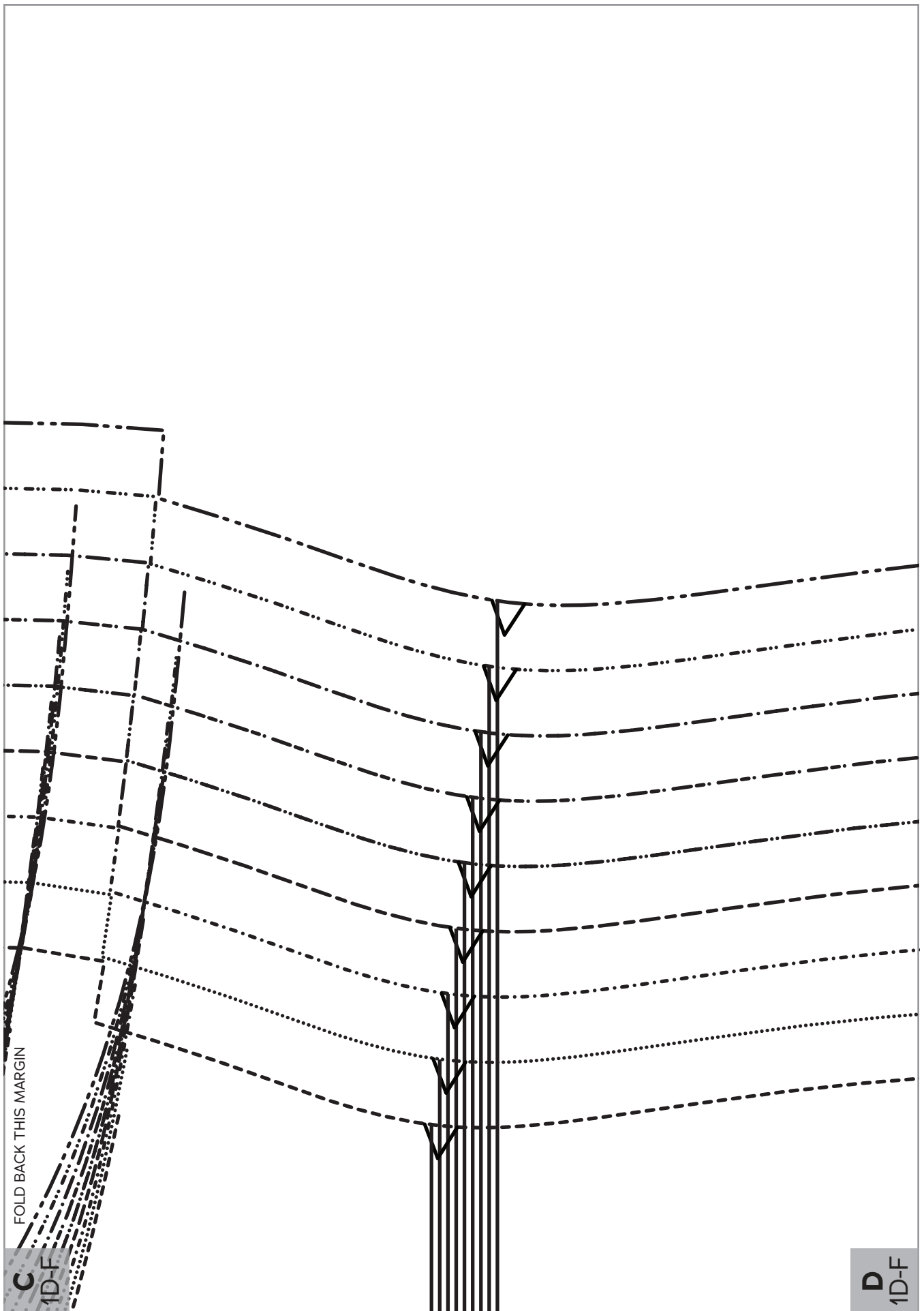




FOLD BACK THIS
MARGIN

B
1D-F

C
1D-F



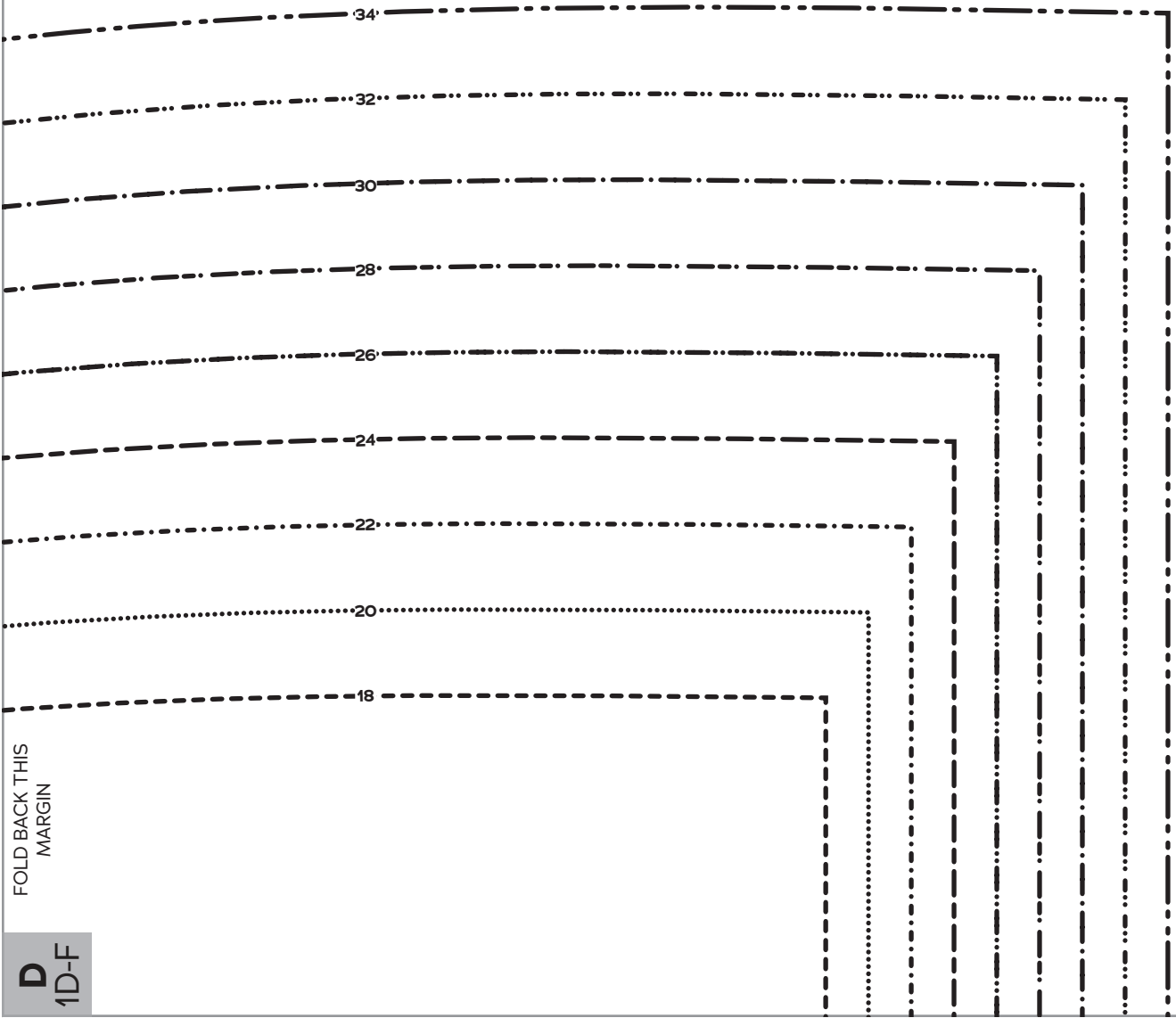
FOLD BACK THIS MARGIN

C

1D-F

D

1D-F

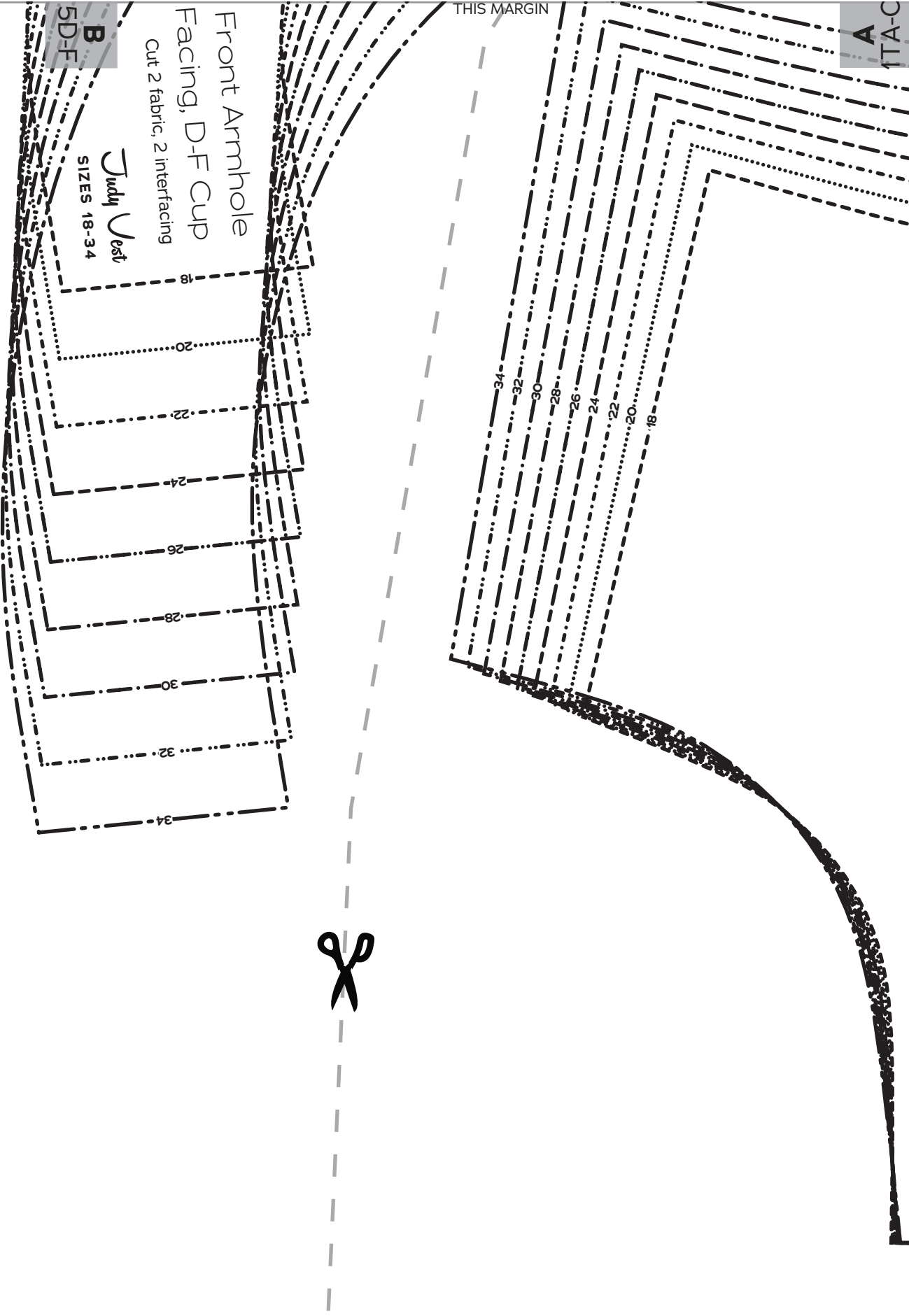


FOLD BACK THIS
MARGIN

D
1D-F

A
ATA-C

THIS MARGIN

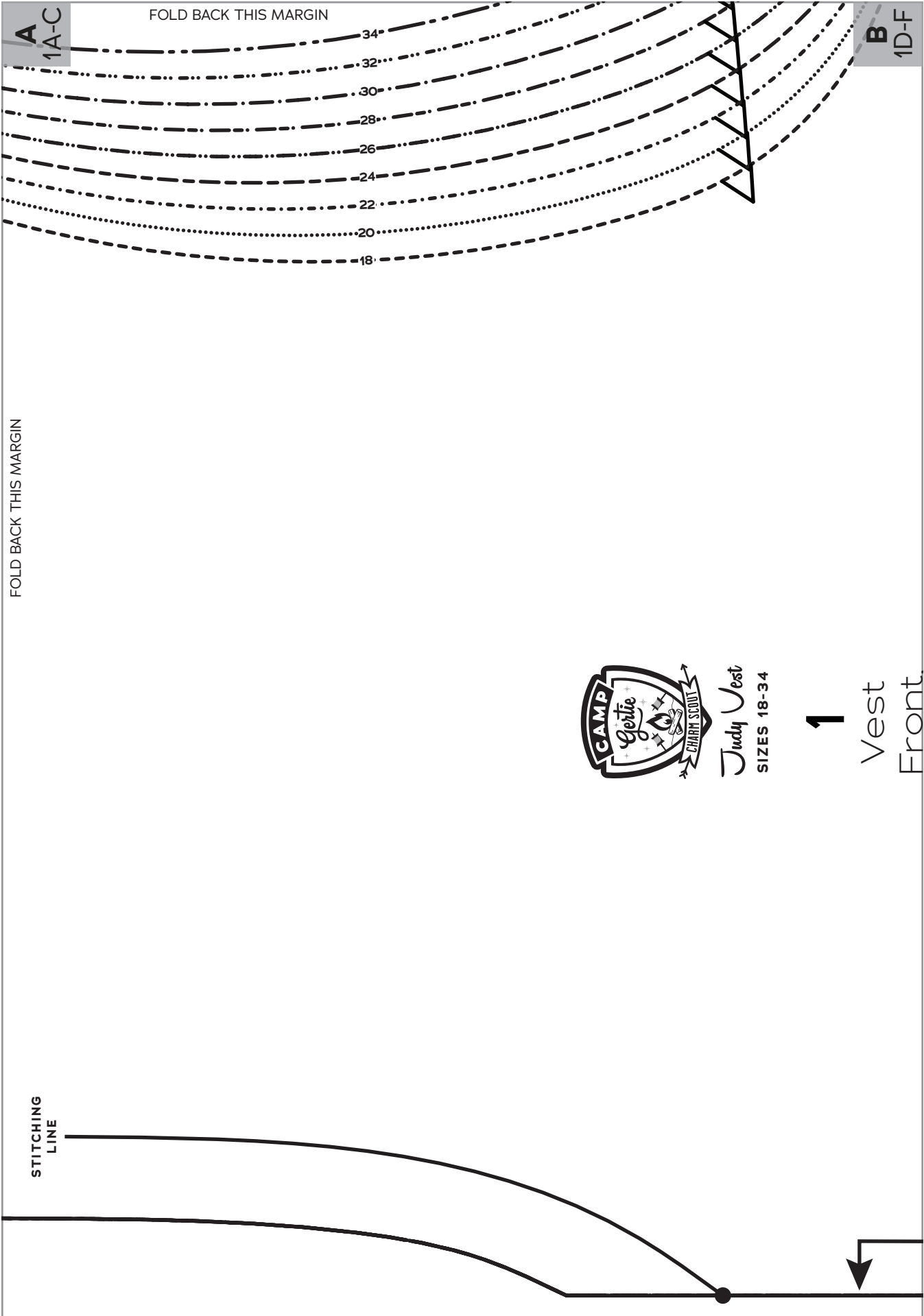


Front Armhole Facing, D-F Cup
Cut 2 fabric, 2 interfacing

B
5D-F

Judy Vest
SIZES 18-34





FOLD BACK THIS MARGIN

FOLD BACK THIS MARGIN

A
1A-C

B
1D-F



Judy Vest
SIZES 18-34

1

Vest
Front

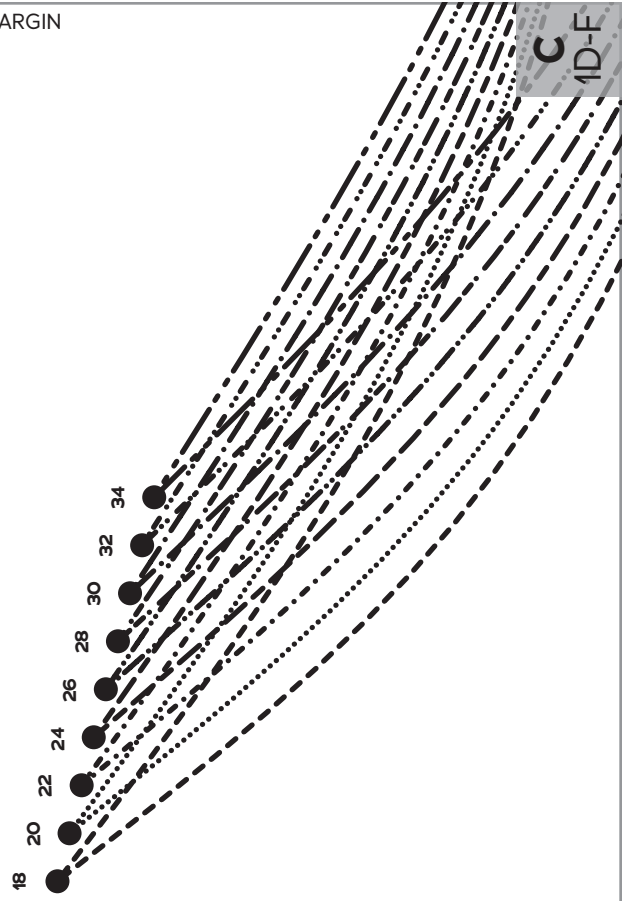
B
1D-F

FOLD BACK THIS MARGIN

FOLD BACK THIS MARGIN

D-F Cup

Cut 1 fabric on fold



C
1D-F

FOLD



FOLD BACK THIS MARGIN

D 1D-F

FOLD BACK THIS MARGIN

SHORTEN/LENGTHEN LINE

18 20 22 24 26 28 30 32 34



D
1D-F

FOLD BACK THIS MARGIN

FOLD BACK THIS MARGIN

18

20

22

24

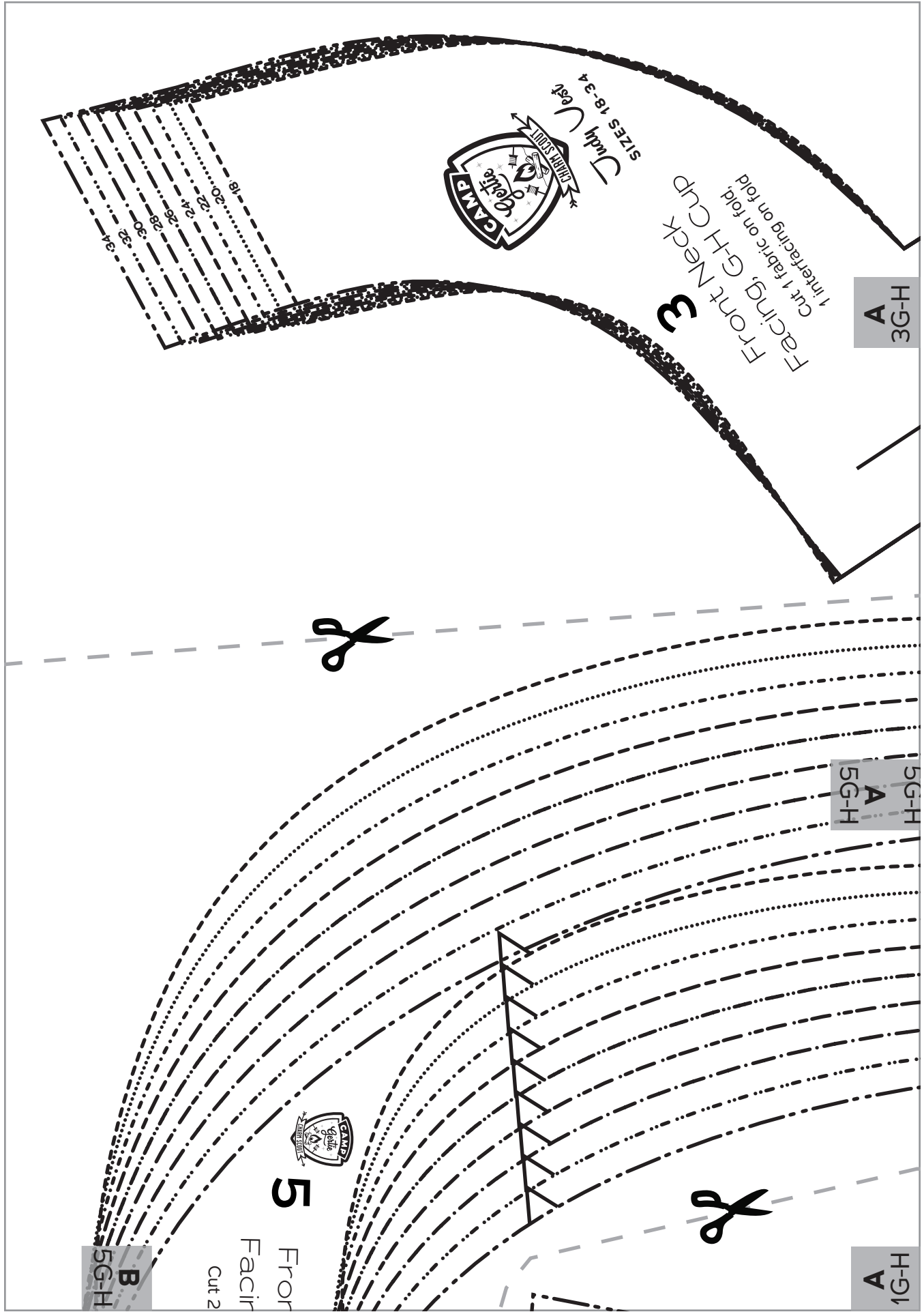
26

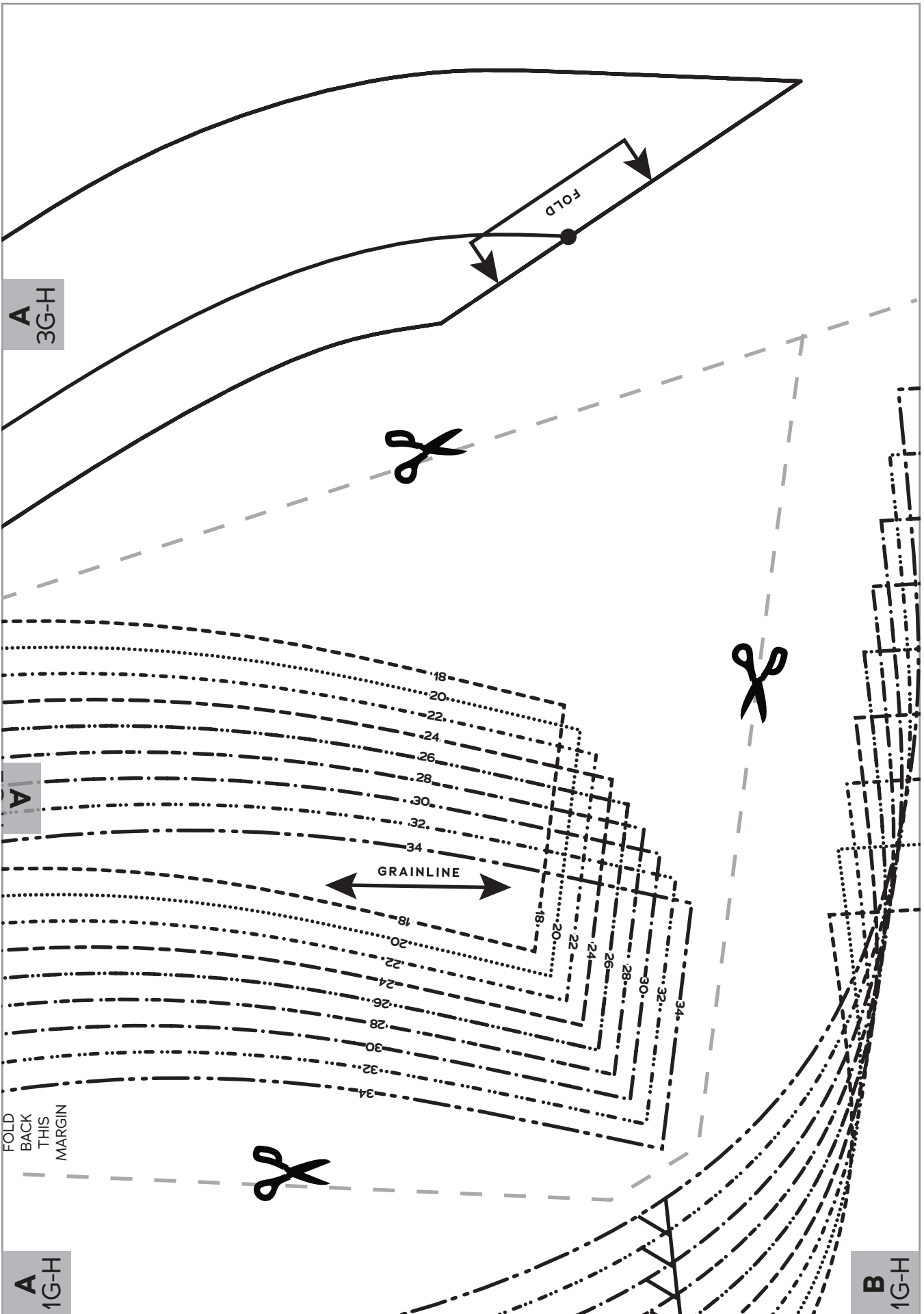
28

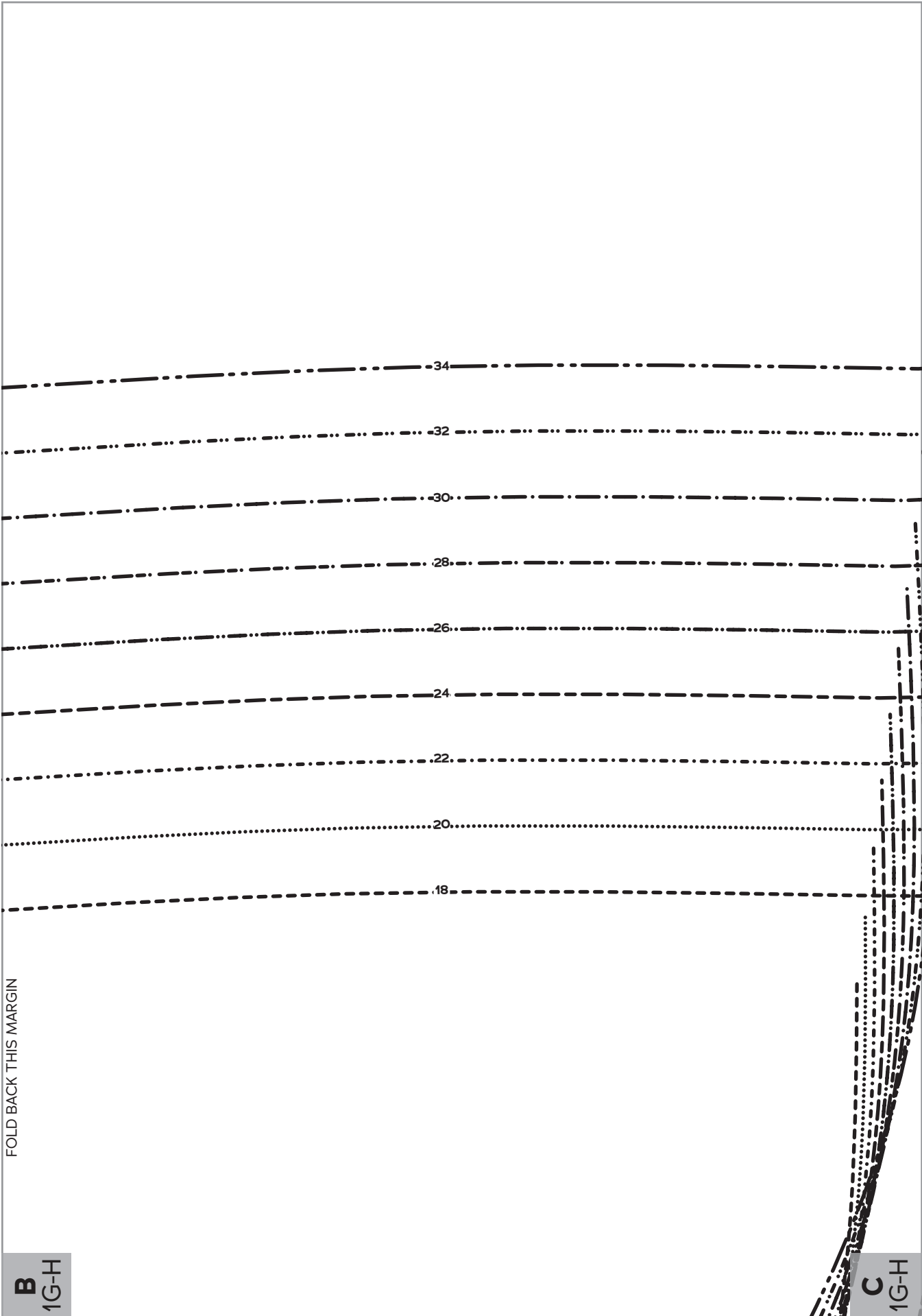
30

32

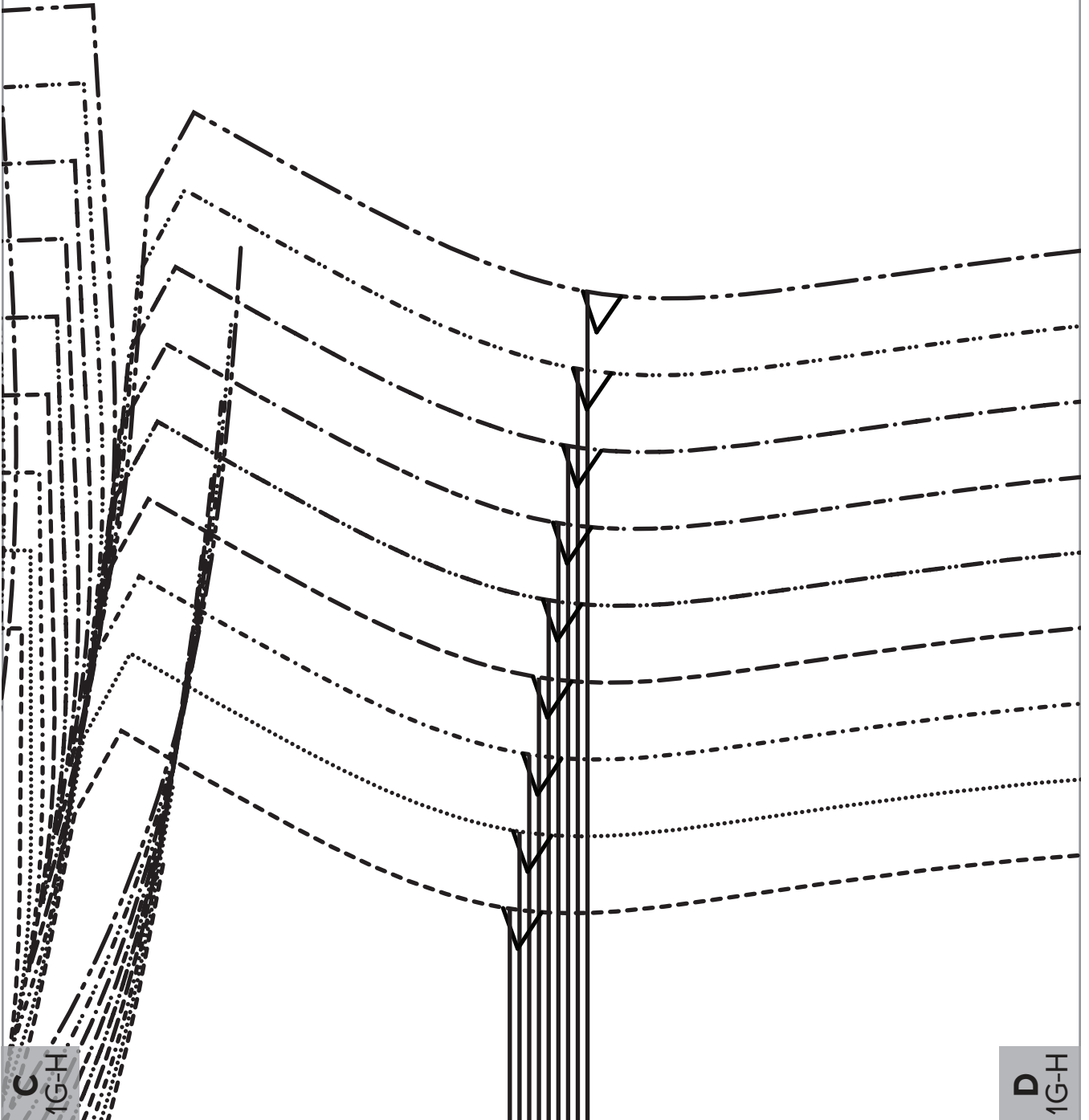
34





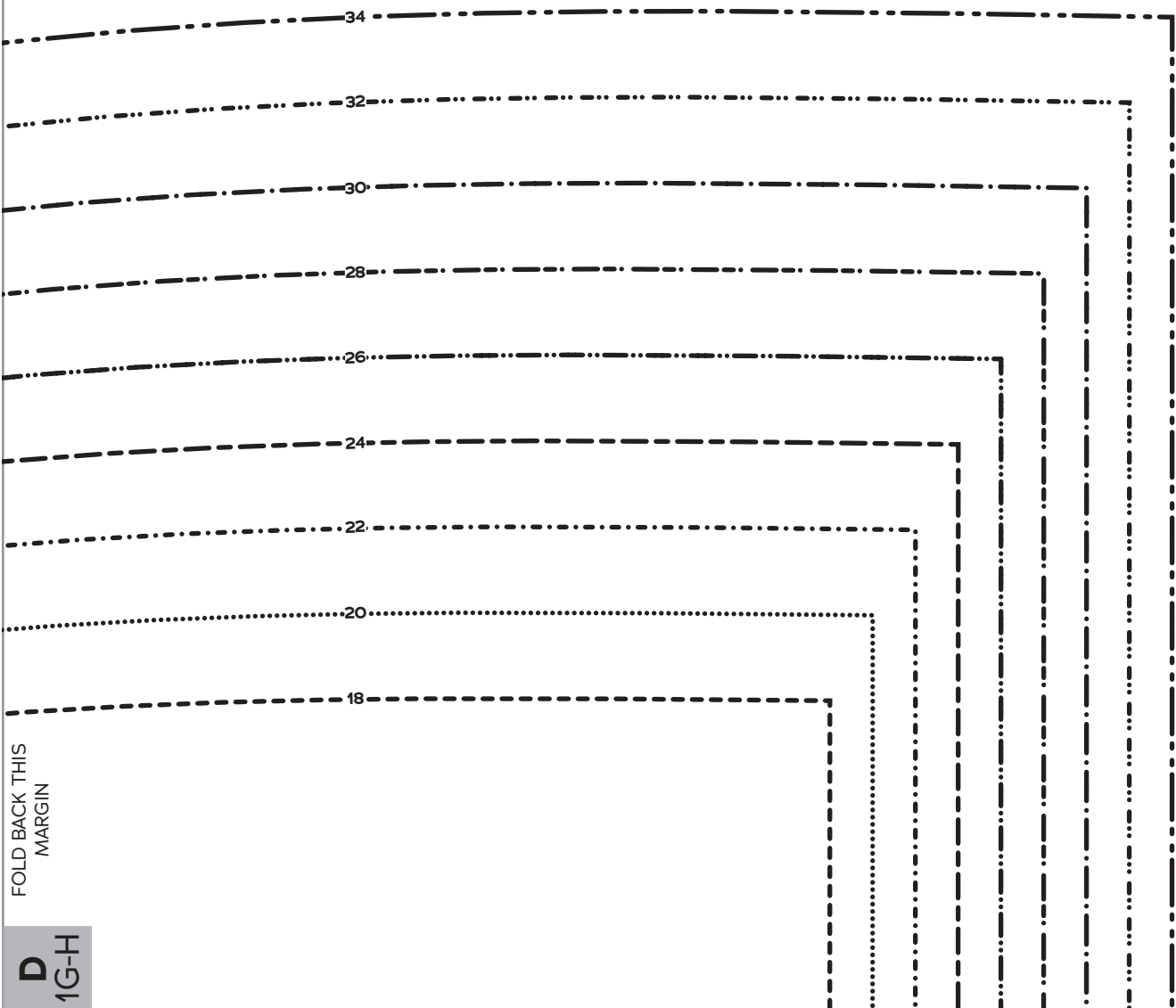


FOLD BACK THIS MARGIN



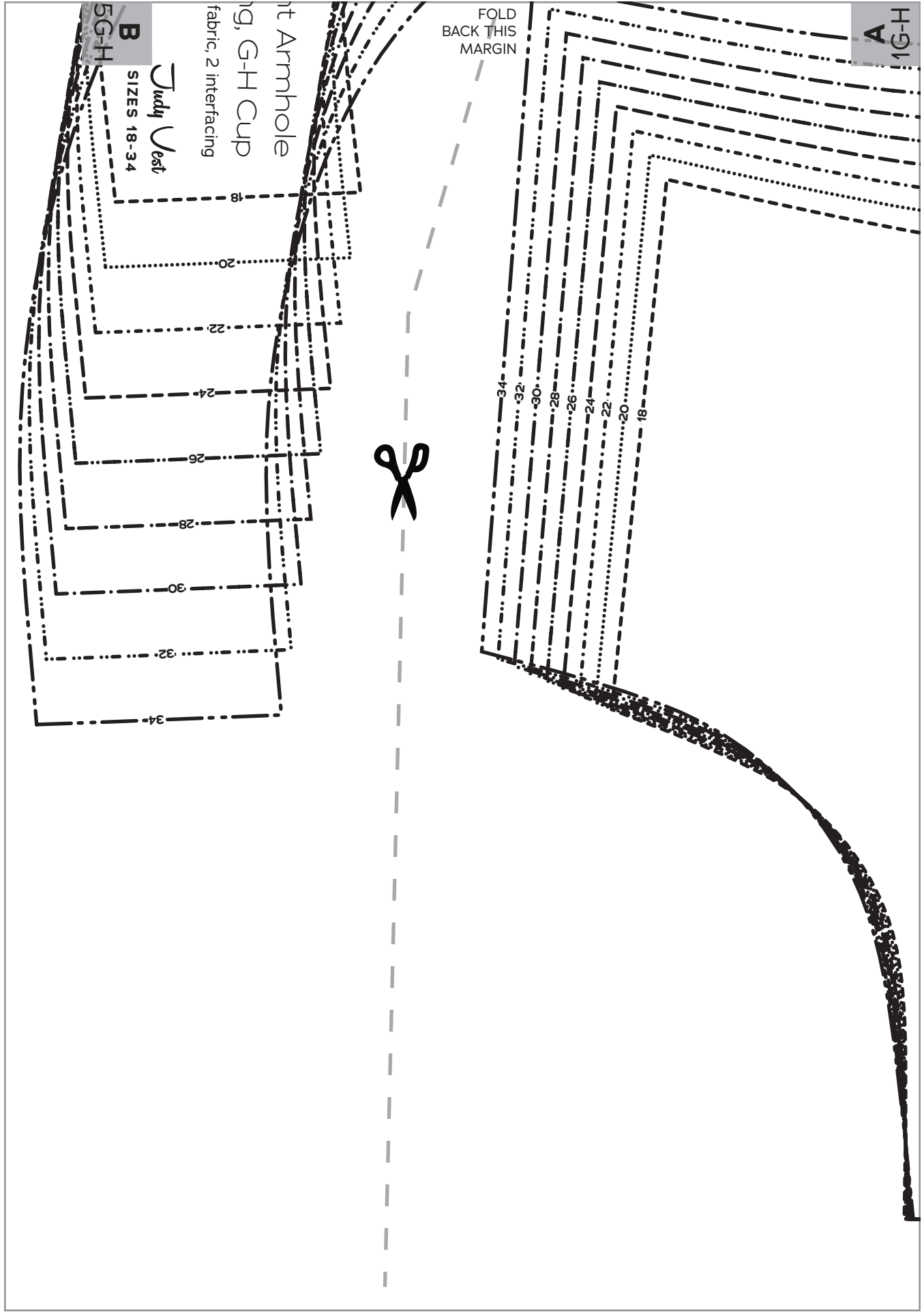
C
1G-H

D
1G-H



FOLD BACK THIS
MARGIN

D
1G-H



FOLD
BACK THIS
MARGIN

A
1G-H

B
5G-H

Judy Vest

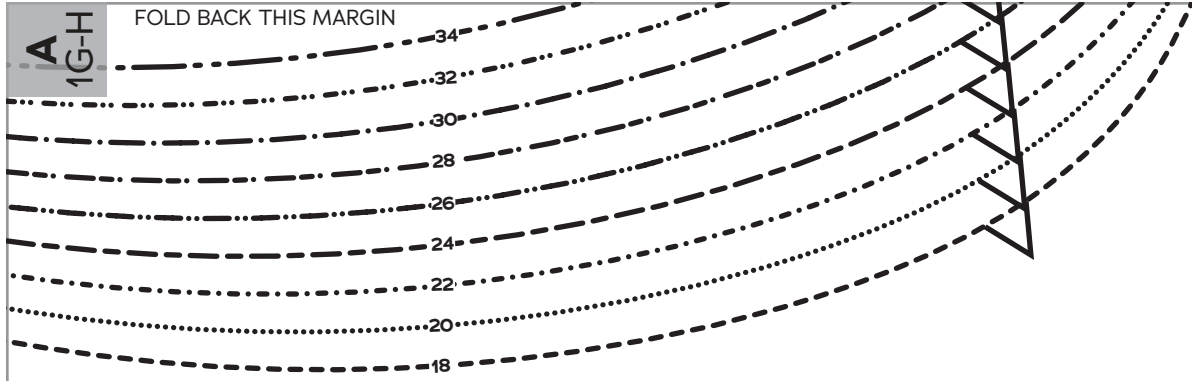
SIZES 18-34

Armhole
Cup
Fabric, 2 interfacing

FOLD BACK THIS MARGIN

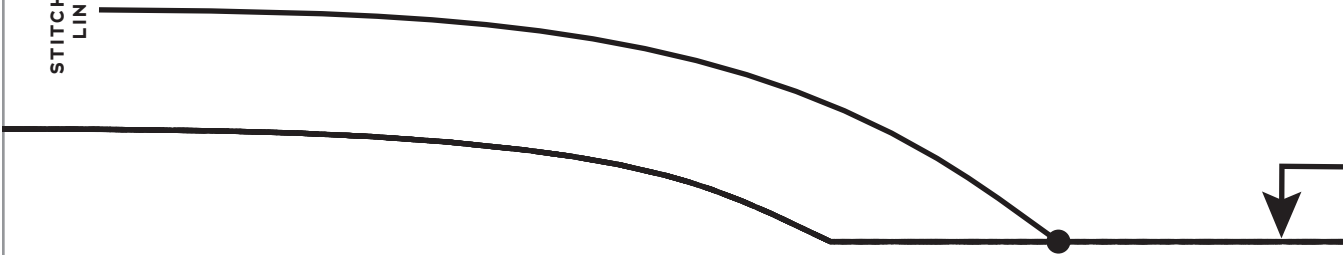
A
1G-H

FOLD BACK THIS MARGIN



B
1G-H

STITCHING
LINE



Judy Vest
SIZES 18-34

1
Vest
Front

B
1G-H

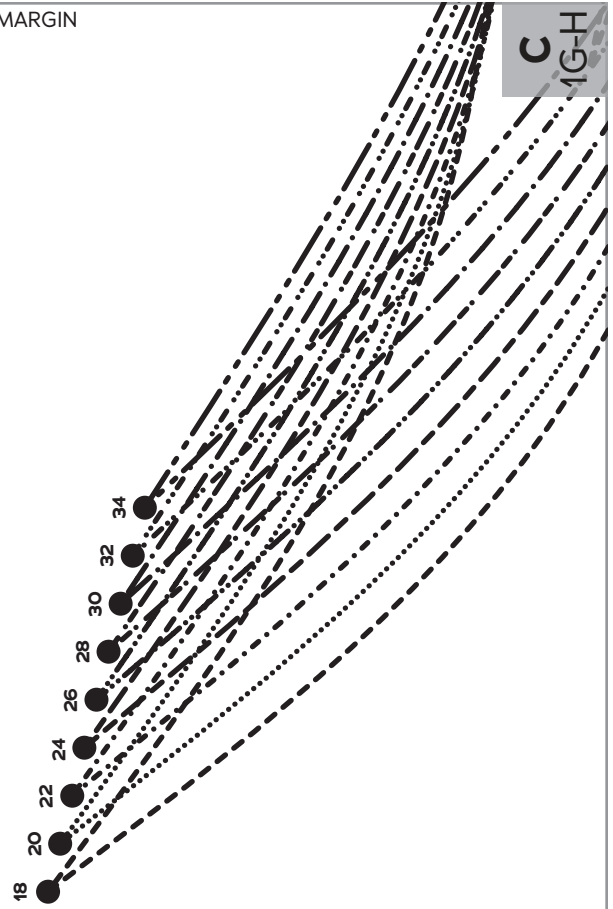
FOLD BACK THIS MARGIN

C
1G-H

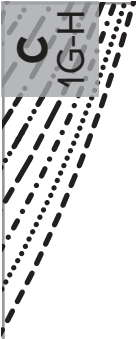
FOLD BACK THIS MARGIN

G-H Cup

Cut 1 fabric on fold



FOLD



FOLD BACK THIS MARGIN

FOLD BACK THIS MARGIN



SHORTEN/LENGTHEN LINE

18 20 22 24 26 28 30 32 34



FOLD BACK THIS MARGIN

D
1G-H

FOLD BACK THIS MARGIN

