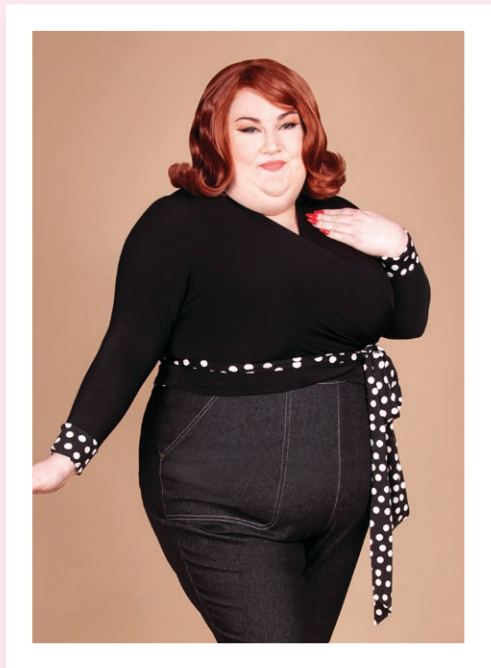
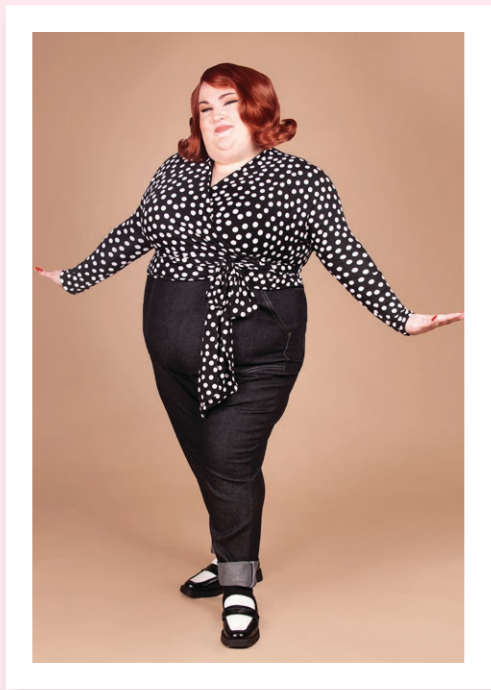




A PATREON EXCLUSIVE BY CHARM PATTERNS



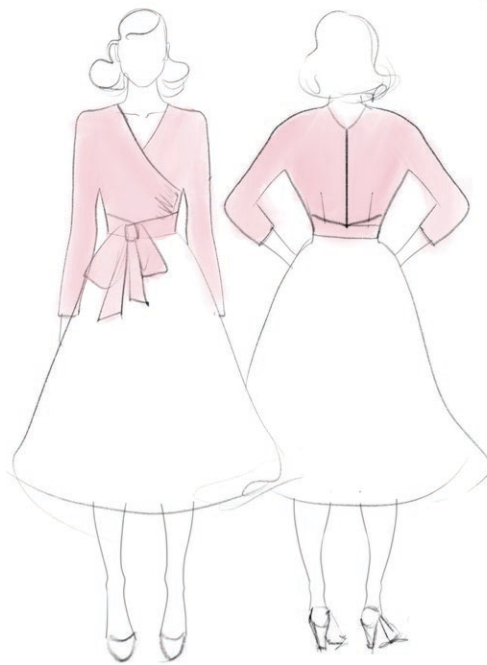
EXTRA CREDIT WRAP TOP



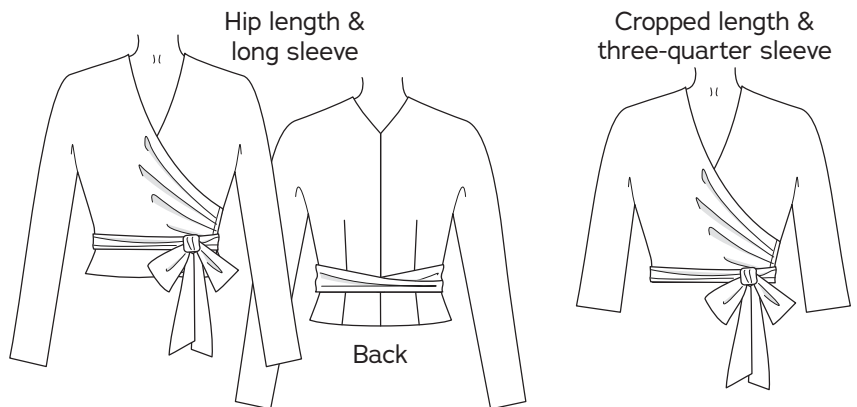
The Extra Credit Wrap Top is a new take on a longtime Charm favorite, Butterick 6285/Simplicity 9288, now available in our updated size range and with A–H cup sizes.

This V-neck knit top has a unique wrap construction and is fully lined. Plus, it comes in two length options! The hip-length top is great for tucking into skirts or wearing over another garment, while the cropped-length top ends at the natural waist—a perfect length if you would like the challenge of adding a self-drafted skirt to create a wrap dress. (If you don't want to draft your own, Glamour Circle+ students will receive the Extra Credit skirt expansion pattern on February 15.)

We've also included two sleeve length options. And with the full lining, you could also make the top reversible. So many different variations, all from one easy knit pattern!

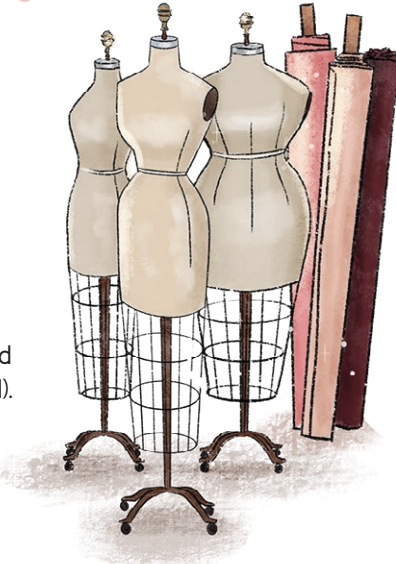


xoxo, Gertie



SIZE CHART

The Extra Credit Wrap Top is sized in women's US 2–20 and 18–34, A–H cup sizes. Please use the chart below to pick your size. The High Bust measurement should be taken above your breasts and the Full Bust measurement should be taken at the fullest part of your bustline. Take the Waist measurement at the smallest part of your torso and the Hip measurement at the widest part of your hips. Note that it is best to choose your size by your bust measurements (and add or remove from the side seams at the waist if needed).



Not sure which size range to choose? Learn more about our [two size ranges here!](#)

Sizes

2–20	2	4	6	8	10	12	14	16	18	20
High Bust	29 in 73.7 cm	31 in 78.7 cm	33 in 83.8 cm	35 in 88.9 cm	37 in 94 cm	39 in 99 cm	41 in 104.1 cm	43 in 109.2 cm	45 in 114.3 cm	47 in 119.4 cm
Bust A cup	30.5 in 77.5 cm	32.5 in 82.5 cm	34.5 in 87.6 cm	36.5 in 92.7 cm	38.5 in 97.8 cm	40.5 in 102.9 cm	42.5 in 108 cm	44.5 in 113 cm	46.5 in 118.1 cm	48.5 in 123.2 cm
Bust B/C cup	31 in 78.7 cm	33 in 83.8 cm	35 in 88.9 cm	37 in 94 cm	39 in 99 cm	41 in 104.1 cm	43 in 109.2 cm	45 in 114.3 cm	47 in 119.4 cm	49 in 124.5 cm
Bust D/DD cup	32 in 81.3 cm	34 in 86.4 cm	36 in 91.4 cm	38 in 96.5 cm	40 in 101.6 cm	42 in 106.7 cm	44 in 111.8 cm	46 in 116.8 cm	48 in 121.9 cm	50 in 127 cm
Bust F/G cup	33 in 83.8 cm	35 in 88.9 cm	37 in 94 cm	39 in 99 cm	41 in 104.1 cm	43 in 109.2 cm	45 in 114.3 cm	47 in 119.4 cm	49 in 124.5 cm	51 in 129.5 cm
Bust H cup	34 in 86.4 cm	36 in 91.4 cm	38 in 96.5 cm	40 in 101.6 cm	42 in 106.7 cm	44 in 111.8 cm	46 in 116.8 cm	48 in 121.9 cm	50 in 127 cm	52 in 132.1 cm
Waist	24 in 61 cm	26 in 66 cm	28 in 71.1 cm	30 in 76.2 cm	32 in 81.3 cm	34 in 86.4 cm	36 in 91.4 cm	38 in 96.5 cm	40 in 101.6 cm	42 in 106.7 cm
Hips	36 in 91.4 cm	38 in 96.5 cm	40 in 101.6 cm	42 in 106.7 cm	44 in 111.8 cm	46 in 116.8 cm	48 in 121.9 cm	50 in 127 cm	52 in 132.1 cm	54 in 137.2 cm

Sizes

18–34	18	20	22	24	26	28	30	32	34
High Bust	39.5 in 100.3 cm	41.5 in 105.4 cm	43.5 in 110.5 cm	45.5 in 115.6 cm	47.5 in 120.7 cm	49.5 in 125.7 cm	51.5 in 130.8 cm	53.5 in 135.9 cm	55.5 in 141 cm
Bust A/B cup	42.5 in 108 cm	44.5 in 113 cm	46.5 in 118.1 cm	48.5 in 123.2 cm	50.5 in 128.3 cm	52.5 in 133.4 cm	54.5 in 138.4 cm	56.5 in 143.5 cm	58.5 in 148.6 cm
Bust C cup	43 in 109.2 cm	45 in 114.3 cm	47 in 119.4 cm	49 in 124.5 cm	51 in 129.5 cm	53 in 134.6 cm	55 in 139.7 cm	57 in 144.8 cm	59 in 149.9 cm
Bust D/DD cup	44 in 111.8 cm	46 in 116.8 cm	48 in 121.9 cm	50 in 127 cm	52 in 132.1 cm	54 in 137.2 cm	56 in 142.2 cm	58 in 147.3 cm	60 in 152.4 cm
Bust F/G cup	45 in 114.3 cm	47 in 119.4 cm	49 in 124.5 cm	51 in 129.5 cm	53 in 134.6 cm	55 in 139.7 cm	57 in 144.8 cm	59 in 149.9 cm	61 in 154.9 cm
Bust H cup	46 in 116.8 cm	48 in 121.9 cm	50 in 127 cm	52 in 132.1 cm	54 in 137.2 cm	56 in 142.2 cm	58 in 147.3 cm	60 in 152.4 cm	62 in 157.5 cm
Waist	40 in 101.6 cm	42 in 106.7 cm	44 in 111.8 cm	46 in 116.8 cm	48 in 121.9 cm	50 in 127 cm	52 in 132.1 cm	54 in 137.2 cm	56 in 142.2 cm
Hips	48 in 121.9 cm	50 in 127 cm	52 in 132.1 cm	54 in 137.2 cm	56 in 142.2 cm	58 in 147.3 cm	60 in 152.4 cm	62 in 157.5 cm	64 in 162.6 cm



Pick the right level for you

The Extra Credit Wrap Top is a perfect introduction to sewing with knits for sewists of all levels, and the companion step-by-step video will guide you through each section of the instructions.

BEGINNER

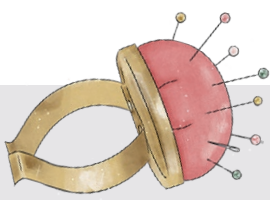
Follow the written instructions along with the companion video to create a top in a solid color knit jersey with a different color lining of the same fabric. Not only will this make the top reversible, but it will help keep the outer garment and lining pieces easy to identify as you sew.

INTERMEDIATE

Sew the top using the instructions and/or video, focusing on using the correct stitch and stitch length for each step. Use any of the recommended fabrics and consider a print or striped contrast lining for a pattern-matching challenge!

ADVANCED

Add a self-drafted skirt to the cropped-length top to create a dress. Draft an A-line skirt with two front pieces and one back. Cut from the same fabric as the top and assemble. Baste the top and top lining wrong sides together at the waistline, then attach the skirt. For an extra challenge, add a skirt lining to make the dress reversible!



FABRIC NOTES

We recommend **light-to medium-weight 4-way stretch knit fabrics** with 70–75% stretch. Spandex blends work well in wool, cotton, rayon, or polyester. If using a fabric with more or less stretch, you may need to adjust the fit of the pattern (stretchier fabrics will result in a looser fit and vice versa).

If using stretch **velvet, sequins, or similar** for the main fabric, choose a lining like jersey that is soft next to the skin. It's very important to use a lining fabric that has an identical stretch percentage as your fashion fabric.

MATERIALS & NOTIONS

- Fabric for the top
- Lining fabric
- Thread to match
- Safety pin

RESOURCES

Here are some of the fabrics we used for the samples and in the video tutorial. There are lots of places to purchase fabric, so this is solely a guide you can use as a reference:

[ITY Knit Jersey](#)

[Polka Dot Rayon Jersey](#)

FIT NOTES

The Extra Credit Wrap Top is a fitted knit garment with a high V-neckline and wrap front, with two sleeve lengths. The cropped-length top ends at the natural waist, and the hip-length top ends at the high hip.

The pattern is designed to fit with negative ease in the bust, waist, and hips. Because of the wrap nature of the garment, the amount of ease is adjustable.

See the charts below for finished garment measurements.

The finished measurements are given as if the top was laid flat, and do not reflect the garment's ease or accurate measurements of the garment when worn. **It is highly recommended that you make a muslin (toile) of the garment to determine the fit for your body.**

FINISHED MEASUREMENTS

Sizes 2-20	2	4	6	8	10	12	14	16	18	20
Bust A-C	39.25 in 99.7 cm	41.25 in 104.8 cm	43.25 in 109.9 cm	45.25 in 114.9 cm	47.25 in 120 cm	49.25 in 125.1 cm	51.25 in 130.2 cm	53.25 in 135.3 cm	55.25 in 140.3 cm	57.25 in 145.4 cm
Bust D-G	40.25 in 102.2 cm	42.25 in 107.3 cm	44.25 in 112.4 cm	46.25 in 117.5 cm	48.25 in 122.6 cm	50.25 in 127.6 cm	52.25 in 132.7 cm	54.25 in 137.8 cm	56.25 in 142.9 cm	58.25 in 148 cm
Bust H	41.25 in 104.8 cm	43.25 in 109.9 cm	45.25 in 114.9 cm	47.25 in 120 cm	49.25 in 125.1 cm	51.25 in 130.2 cm	53.25 in 135.3 cm	55.25 in 140.3 cm	57.25 in 145.4 cm	59.25 in 150.5 cm
Waist at Cropped Seam	33 in 83.8 cm	34.75 in 88.3 cm	36.5 in 92.7 cm	38.25 in 97.2 cm	40 in 101.6 cm	41.75 in 106 cm	43.5 in 110.5 cm	45.25 in 114.9 cm	47 in 119.4 cm	48.75 in 123.8 cm
High Hip/Sweep (Long Top)	32 in 81.3 cm	33.75 in 85.7 cm	35.5 in 90.2 cm	37.25 in 94.6 cm	39 in 99.1 cm	40.75 in 103.5 cm	42.5 in 108 cm	44.25 in 112.4 cm	46 in 116.8 cm	47.75 in 121.3 cm
Bicep	9.5 in 24.1 cm	9.75 in 24.8 cm	10 in 25.4 cm	10.25 in 26 cm	10.5 in 26.7 cm	10.75 in 27.3 cm	11 in 27.9 cm	11.25 in 28.6 cm	11.5 in 29.2 cm	11.75 in 29.8 cm

Sizes 18-34	18	20	22	24	26	28	30	32	34
Bust A-C	51.25 in 130.2 cm	53.25 in 135.3 cm	55.25 in 140.3 cm	57.25 in 145.4 cm	59.25 in 150.5 cm	61.25 in 155.6 cm	63.25 in 160.7 cm	65.25 in 165.7 cm	67.25 in 170.8 cm
Bust D-G	52.25 in 132.7 cm	54.25 in 137.8 cm	56.25 in 142.9 cm	58.25 in 148 cm	60.25 in 153 cm	62.25 in 158.1 cm	64.25 in 163.2 cm	66.25 in 168.3 cm	68.25 in 173.4 cm
Bust H	53.25 in 135.3 cm	55.25 in 140.3 cm	57.25 in 145.4 cm	59.25 in 150.5 cm	61.25 in 155.6 cm	63.25 in 160.7 cm	65.25 in 165.7 cm	67.25 in 170.8 cm	69.25 in 175.9 cm
Waist at Cropped Seam	38.5 in 97.8 cm	40.25 in 102.2 cm	42 in 106.7 cm	43.75 in 111.1 cm	45.5 in 115.6 cm	47.25 in 120 cm	49 in 124.5 cm	50.75 in 128.9 cm	52.5 in 133.4 cm
High Hip/Sweep (Long Top)	45.75 in 116.2 cm	47.5 in 120.7 cm	49.25 in 125.1 cm	51 in 129.5 cm	52.75 in 134 cm	54.5 in 138.4 cm	56.25 in 142.9 cm	58 in 147.3 cm	59.75 in 151.8 cm
Bicep	20 in 50.8 cm	20.25 in 51.4 cm	20.5 in 52.1 cm	20.75 in 52.7 cm	21 in 53.3 cm	21.25 in 54 cm	21.5 in 54.6 cm	21.75 in 55.2 cm	22 in 55.9 cm



REQUIRED YARDAGE & CUTTING LAYOUTS

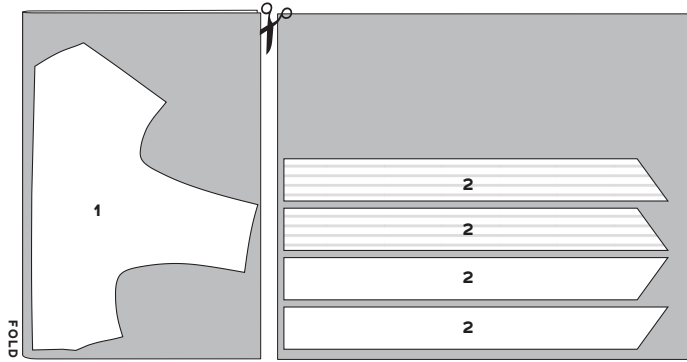
NOTE: All pattern pieces are shown in a “without nap” layout. You may need additional yardage for directional prints, stripes, plaids, and other prints that need to be matched across seamlines.

Top with Long Sleeves, Fabric (1, 2)

	Sizes 2-20	Sizes 18-24	Sizes 26-34
45 in	3¼ yd 3 m	3¾ yd 3.4 m	4¼ yd 3.9 m
60 in	3¼ yd 3 m	3¾ yd 3.4 m	4¼ yd 3.9 m

NOTE: First cut piece 1 on a crosswise layout, as shown. Open up the full width of the fabric and make a fold perpendicular to the selvages.

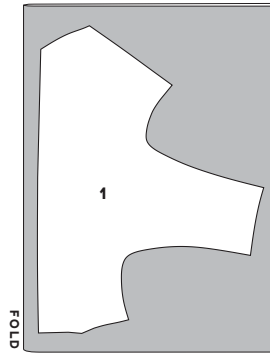
Then open flat in order to cut the tie (2) on a single layer.



Top with Long Sleeves, Lining (1)

	Sizes 2-10	Sizes 12-20	Sizes 18-34
45 in	1¾ yd 1.6 m	1⅞ yd 1.7 m	1⅞ yd 1.7 m
60 in	1¾ yd 1.6 m	1⅞ yd 1.7 m	1⅞ yd 1.7 m

NOTE: The pieces should be cut on a crosswise layout, as shown. Open up the full width of the fabric and make a fold perpendicular to the selvages.



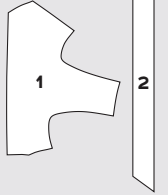
PATTERN PIECES

1. Bodice


Cut 2 fabric, 2 lining


2. Tie

Cut 4 fabric



KEY TO LAYOUTS

 Right side of pattern piece

 Wrong side of pattern piece

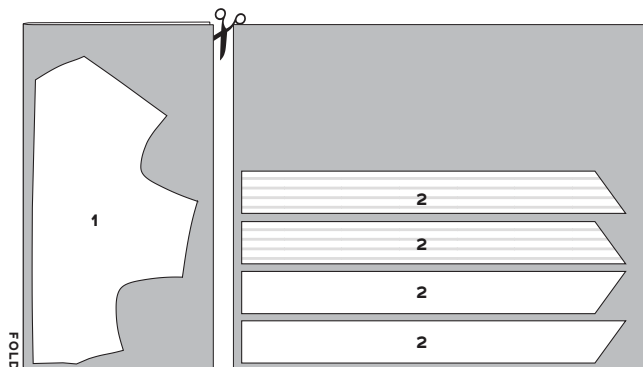
Be sure to note whether the pieces are cut on a double or single layer of fabric. For a double layer, there will be a note indicating FOLD on the layout.

Top with Three-Quarter Sleeves, Fabric (1, 2)

	Sizes 2-10	Sizes 12-20	Sizes 18-24	Sizes 26-34
45 in	2¾ yd 2.5 m	3 yd 2.7 m	3½ yd 3.2 m	3¾ yd 3.4 m
60 in	2¾ yd 2.5 m	3 yd 2.7 m	3½ yd 3.2 m	3¾ yd 3.4 m

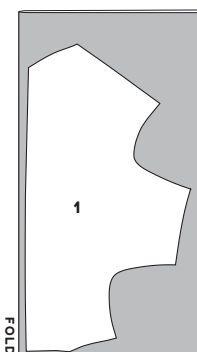
NOTE: First cut piece 1 on a crosswise layout, as shown. Open up the full width of the fabric and make a fold perpendicular to the selvages.

Then open flat in order to cut the tie (2) on a single layer.



Top with Three-Quarter Sleeves, Lining (1)

	Sizes 2-10	Sizes 12-20	Sizes 18-34
45 in	1⅞ yd 1.3 m	1½ yd 1.4 m	1½ yd 1.4 m
60 in	1⅞ yd 1.3 m	1½ yd 1.4 m	1½ yd 1.4 m



NOTE: The piece should be cut on a crosswise layout, as shown. Open up the full width of the fabric and make a fold perpendicular to the selvages.

SEWING INSTRUCTIONS

BEFORE SEWING

Transferring marks: use dressmaker's tracing paper and a tracing wheel to transfer all pattern markings to the wrong side (WS) of your fabric. Mark pattern notches by snipping into the seam allowance with the tip of your scissors.

Seam finishing: the top is fully lined, so seam finishing is not necessary.

NOTES

- 5/8-inch (in) (1.5 cm) seam allowances are included on all pattern pieces, except where otherwise noted.
- Press your stitching lines after every step, even when not specified in the instructions. You do not need to press basting or gathering stitches.
- For three-quarter length sleeves, cut sleeves at the three-quarter length sleeve cutting line.
- For a top that ends at the natural waist or for a dress, cut the bodice at the cropped-length cutting line.

SEW THE TOP

BODICE

1. Gather bodice: using a 4-mm to 5-mm-long gathering stitch, sew two lines of stitching within the seam allowance between the large and small circle marks on each Bodice (1). Sew the first line of gathering stitches 1/2 in (1.3 cm) from the raw edge and the second line 1/4 in (6 mm) from the raw edge. Do not backstitch to lock your stitches. Pull up bobbin threads to gather. Gathers will be concentrated between circle marks. Repeat for the bodice lining.

2. Sew back darts: on bodice, bring dart legs right sides (RS) together, pinning along marked lines. Stitch along marked lines from dart base to dart point with a straight (not zigzag) stitch. Backstitch at the beginning but not at the end, leaving a thread tail a few inches long. Tie thread tails by hand. Press darts toward the long straight edge, which will become the center back (CB). Repeat for the bodice lining.

3. Sew bodice left to bodice right: pin the two bodice pieces RS together along the long straight edge from the CB circle to the back waistline raw edge. Stitch. Clip into the seam allowance at the CB circle. Press seam allowances to one side. Repeat for the bodice lining, pressing seam allowances to the same side. The seam allowances will lay in opposite directions once the lining is attached.

4. Sew side seams: pin bodice unit underarm seam, RS together, matching notches and circles. Stitch, leaving

an opening between circles on the right side seam (as worn). Repeat for the bodice lining unit, leaving an opening between the circles on the right side seam (as worn). Press the seam allowances open and clip into the underarm curve every 1/2 in (1.3 cm), being careful not to clip into the stitching.

NOTE: the openings on the bodice and lining side seam will appear to be on opposite sides, but will align correctly when the lining is attached.

5. Assemble ties: pin Ties (2) RS together along both long edges and the angled edge. Stitch, pivoting at the corners and leaving the short straight edge unstitched. Clip corners and trim seam allowances. Turn RS out and press flat. Baste the short straight edge with a 1/2-in (1.3 cm) seam allowance.

6. Attach ties: pin ties to gathered sections of bodice, RS together, matching small and large circles. Adjust gathering so it is evenly spaced between circles. Baste to secure.



CHARM SCHOOL
SKILL-BUILDING
EXERCISE
Sewing with Knits

Perfecting the perfect stitch when using knit fabrics goes a long way towards having a professional-looking garment! You want to avoid tunneling or stitches that pull.

Use a stretch, ballpoint, or jersey needle to avoid skipped stitches.

Use a narrow zigzag stitch on seams to provide some stretch (about 2.5 mm wide by 2.5 mm long).

Use an even narrower zigzag stitch on hems (about 1.5 mm wide by 2.5 mm long), or use a twin needle. If you stretch the fabric as you sew the zigzagged hem, you can create a lettuce-edge effect.

Practice using scraps of your knit fabric until you feel confident with your needle choice, stitch length, and tension.

How to Bag a Lining

Bagging a lining is a great technique for adding a lining to a sleeved garment that limits the amount of hand sewing you need to do! The technique is difficult to explain on paper but easy to do in person, so please watch the tutorial video to see these steps in action.

If you want to practice this technique further, you can use it for any fully lined Charm jacket pattern, such as the Swing Coat, Brooklyn Jacket, or Rizzo Jacket. (Rizzo will be a challenge because of the sleeve placket and cuff, but I know you can do it!)

1. Usually on a coat or jacket, you'll want the lining to be ½ to 1 in (1.3 to 2.5 cm) shorter than the outer garment so it isn't visible from the RS. Shorten the lining sleeve hem and garment hem, if not already accounted for in your lining pattern pieces. For the Extra Credit Wrap Top, you'll skip this step, as the lining will be the same length as the outer garment.

2. You'll want to leave an opening to turn your garment RS out after construction. It's common to leave an opening in one side seam of the lining, but you can also leave the opening in your garment hem (as we did for the Extra Credit Wrap Top). Decide where your opening will be, and factor that in during the next step.

3. Assemble the garment and lining as two separate, complete units, including setting in the sleeves to each.

4. Press the sleeve and garment hem allowances to the WS for both the outer fabric and the lining. This will help them lay correctly after being sewn, and it also helps with pinning the garment in a later step.

5. With RS together, stitch the lining to the garment around the front opening and neckline.

6. Turn the garment RS out, and insert the lining sleeves into the garment sleeves, just as you would when wearing the garment. Make sure the lining sleeves are not twisted. Tuck the seam allowances to the WS, so the sleeve and lining look just as they would when worn. At the sleeve hem, reach up from the garment hem, in between the outer fabric and the lining fabric, all the way through the sleeve to the sleeve hem and pinch the sleeve hem lining and fabric together at the underarm seam. While pinching, pin the lining and fabric hem seam allowances RS together at the underarm seam. This part can be tricky; you're basically pinning inside the garment, and this pin becomes very important in the next step. **NOTE:** once you've mastered this technique, you can skip the

safety pin and just pinch the fabric and lining together to combine this step with the next one.

7. Take a deep breath and reach your hand up from the garment hem, in between the outer fabric and lining fabric, all the way through the sleeve to the sleeve hem. Grab and hold the pin you placed at the sleeve hem at the underarm seam, and do not let go! Holding the pin, pull the sleeve through the garment hem opening. It will look like you have two individual sleeves but trust the process. Holding the pin, bring your garment over to the sewing machine and sew the outer fabric and lining sleeve hems RS together, removing the pin when necessary. This can get fiddly if the sleeve hem has a tight circumference. Once sewn, grade or trim the sleeve hem seam allowances.

8. From the RS of the garment, reach your hand through the outer fabric sleeve and pull it RS out. Like magic, your lining will come with it and be properly sewn! Repeat steps 5 and 6 for the other sleeve.

9. For a professional touch, from the garment RS, stitch in the ditch along the underarm seam at the sleeve hem approximately 1 in (2.5 cm) to secure.

10. If you left an opening in the lining side seam, finish the hem completely. Otherwise, sew the hem, leaving an opening to turn the garment RS out. Turn the garment RS out.

11. For an advanced tailoring technique, blind stitch the sleeve and garment hem allowances to the WS of the outer fabric so the hem doesn't sag when worn. This is not necessary for a garment like the Extra Credit Wrap Top, but is a nice touch on a jacket or coat.

12. Close the opening in the lining side seam or hem to finish the garment.

Enjoy your finished bagged lining (and relish in the fact that there was almost no hand sewing involved).

7. Sew neckline and front opening: beginning at the lower tie attachment circle, pin the lining to the bodice, RS together, along the neckline and front opening edge, matching circles and sandwiching the ties inside. Stitch one half of the neckline from the CB circle to the waistline, pivoting at the small circle and backstitching at both ends. Break your stitches and repeat to stitch the opposite half of the neckline and front opening. Trim seam allowances.

8. Prepare sleeve hem allowances: press bodice and lining sleeve hem allowances to the WS. Turn garment RS out, with lining sleeves inside the bodice sleeves. Using a safety pin, pin the bodice and lining sleeve hem seam allowance RS together at the underarm seam. This is the first step in bagging the lining, so be sure to study this month's Charm School Lesson and the companion video for the correct technique.

9. Sew sleeve hems: reaching in between the bodice and lining fabric from the garment hem, grab and hold the pin at the sleeve hem. Holding the pin, pull the sleeve

through the garment hem opening. Remove the safety pin and stitch the bodice to the lining at the sleeve hem, RS together. Trim sleeve allowances and pull the sleeve RS out. Press the sleeve hem.

10. Sew garment hem: with bodice and lining RS together, pin the garment hem allowance, leaving an opening between the back darts. Stitch one half of the garment hem from the front opening to the first back dart, backstitching at both ends. Repeat for the other half of the garment hem, leaving the area between the back darts unsewn. Trim seam allowances and turn the garment RS out.

11. Close hem opening: press the seam allowances to the WS at the hem opening and pin. Slipstitch the hem opening closed by hand.

12. Finish side seam tie opening: slipstitch the bodice to the lining at the side seam opening for a clean finish.

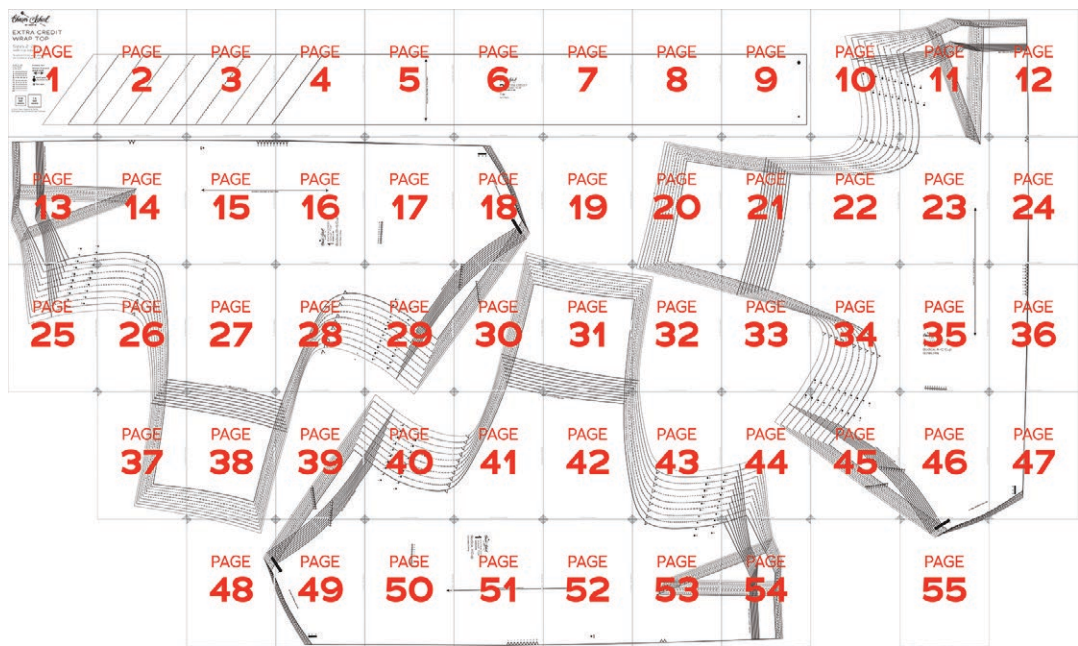
Enjoy your fetching new Extra Credit Wrap Top!

PATTERN PIECE LOCATION GUIDE

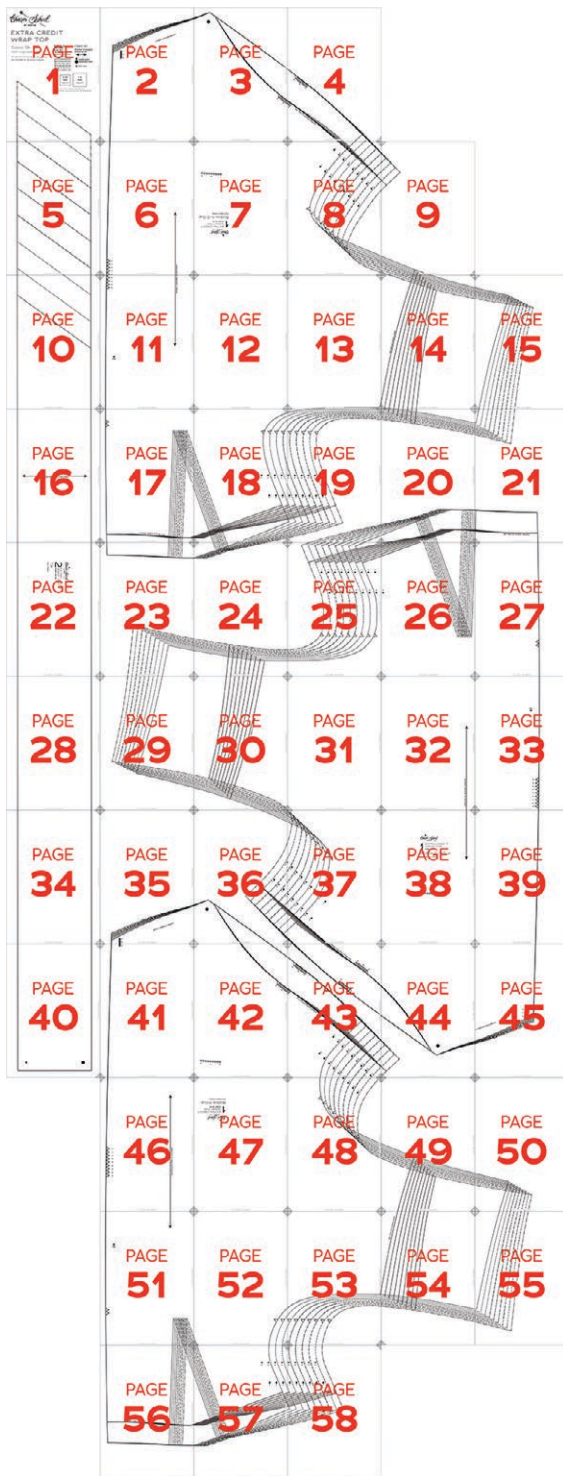
Here is a list to help you locate the pattern pieces on the letter-size tiled pages and A0 pattern sheets. The tiled pieces and A0 sheets are included as separate PDF files as part of this digital pattern.

PC#	Piece Name	SIZES 2-20		SIZES 18-34	
		Tiled	A0	Tiled	A0
1	Bodice, A-C Cup	10-12, 20-24, 32-36, 44-47, 55	1	2-4, 6-9, 11-15, 17-21, 23-24	1
1	Bodice, D-G Cup	13-18, 25-30, 37-40, 48	2	19-21, 23-27, 29-33, 36-39, 43-45	2
1	Bodice, H Cup	18-19, 30-32, 39-44, 48-54	3	35-36, 41-44, 46-58	3
2	Tie	1-9	4	1, 5, 10, 16, 22, 28, 34, 40	4

TILING MAPS SIZES 2-20



SIZES 18-34



HOW TO USE THIS PATTERN

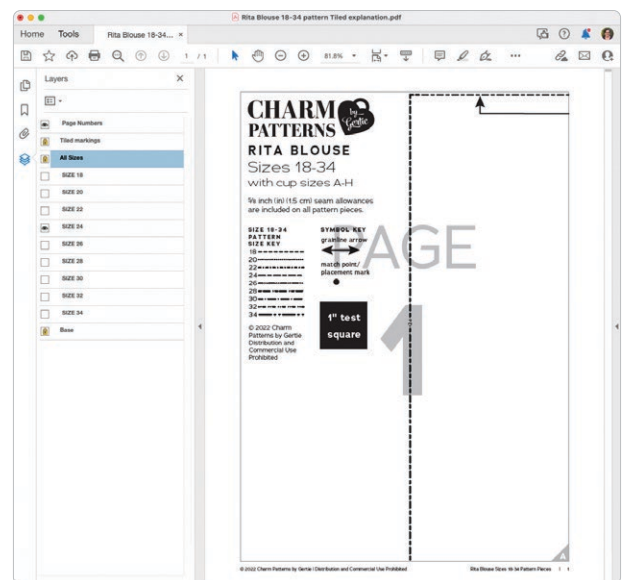
The pattern pieces are tiled so you can print them on Letter (8 1/2 in x 11 in) or A4 size paper. You can also send the A0 pattern sheet PDF to a local or online printer (like [ThePlottedPattern.com](https://www.ThePlottedPattern.com)) to print on large sheets (36 in x 48 in for U.S. or A0 for international).

This pattern includes size layers. To get the best results, open either the Tiled or A0 pattern pieces PDF in [Acrobat Reader](https://www.Adobe.com/products/acrobat-reader).

Open the Layers Palette (View>Show/Hide>Navigation Panes>Layers) and hide all of the layer(s) except for the ones you want to print by clicking on the eye icon.

The All Sizes and Tiled Markings layers have general pattern information and will always print.

You may choose to turn off the Page Numbers layer. The page numbers will still appear at the bottom of each page in the footer.



WORKING WITH THE TILED PIECES

Go to File>Print and change the page range to the pages you need for the pieces you've chosen (see Pattern Pieces Printing Index). Make sure the Page Sizing settings to 100% or Actual Size. Test after printing by measuring the 1 inch or 2 cm test box on the first page of the pattern pieces.

Cut apart any pattern pieces that share a page, then fold back or cut off the page margins on each page as marked.

Match the letters in the gray corner diamonds. Tape the pages together, butting up the folded or cut page edges with the gray margin lines.

WELCOME TO



Class is in session!

Charm School is a private and exclusive dressmaking academy where your fantasies are stitched into reality.

Enjoy these benefits as part of your Charm School enrollment. For more access, upgrade now to a higher tier [on Patreon](#).

As you explore the hallowed halls, remember our four tenets: **Education, Community, Glamour, and Mastery**. And never forget the motto that generations before us have pledged: *Setire Phantasia*. **Feel the fantasy!**

STUDENT RESOURCES

- Easily find your homework and patterns using the Patreon archive visual index on our [Patreon page](#).
 - Learn which patterns can combine together from our [mix-and-match spreadsheet](#).
 - Shop all Charm sewing patterns and accessories in the [Charm shop](#).
- On Instagram:** Stay in the loop and get inspired by Gertie and other students.
- On YouTube:** Learn beginner and advanced sewing skills and techniques with comprehensive tutorials.



2024 PATREON TIER COMPARISONS



	Sewing Circle	Glamour Circle	Princess Circle	Inner Circle
2024 Price	\$9	\$12	\$20	\$25
Monthly sewing pattern	✓	✓	✓	✓
Monthly pattern video	✓	✓	✓	✓
Monthly live event	✓	✓	✓	✓
Monthly sneak peek	✓	✓	✓	✓
Discord channel	✓	✓	✓	✓
One Charm PDF gift per year (Gertie's choice)	✓	✓	✓	✓
First access to Charm merchandise	✓	✓	✓	✓
<i>Vintage by Gertie</i> quarterly magazine	x	✓	✓	✓
Monthly bonus content: pattern or digital download	x	✓	✓	✓
40% off one print or PDF Charm Pattern (3x per year)	x	x	✓	✓
Annual physical gift	x	x	✓	✓
Charm Pattern sneak peaks	x	x	✓	✓
100% off all new Charm Patterns when they are released (in PDF)	x	x	x	✓
PDF Charm sloper of the Charm Bodice Block (not released to the public)	x	x	x	✓
5% off and first dibs on signing up for Gertie's 2024 in-person Charm Sewing Retreats	x	x	x	✓
Regular exclusive live event as our Inner Circle board of advisors	x	x	x	✓
Names listed as Inner Circle patrons in <i>Vintage by Gertie</i> magazine	x	x	x	✓
20% off Charm merchandise, 2x per year, plus access to past annual gifts (according to availability)	x	x	x	✓



You will also find these free PDF patterns in our shop:



Read all of Gretchen Hirsch's books to advance your sewing skills!
Available to purchase or order from your favorite bookseller.

