



Lady

DANDY WAISTCOAT

A PATREON EXCLUSIVE PATTERN



© 2022 Charm Patterns by Gertie



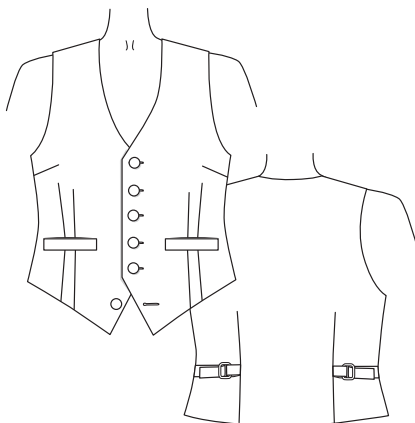
ABOUT THE GUEST ARTIST

Dandy

Wellington is a bandleader, entertainer, style activist, and creative consultant born and raised in Harlem, New York. Influenced by the style and skill of classic entertainers of the past but with his feet planted firmly in the present, he's made a name for himself by creating unique experiences for his clients. To learn more about Dandy, visit www.DandyWellington.com.

KEY SKILLS

- sewing a welt pocket
- working with slippery fabrics
- fully lining a waistcoat



I'm excited to expand this month's guest artist design, the Dandy Waistcoat, into our regular and curvy Charm size ranges to create the Lady Dandy! Working with Dandy has been a dream, and I know you're going to love this striking vintage-inspired waistcoat. Sew up this fitted vest in our regular Charm size range (2-20 and 18-34 with bust cups A-H) for yourself, and then create a matching set using the unisex companion waistcoat (in sizes XS-5XL) for your nearest and dearest!

xoxo, *Gertie*

When approaching this collaboration with Charm Patterns, I wanted to focus on a classically tailored item that could work for anyone. After a great conversation with Gertie, we arrived at this 1930s-inspired waistcoat. You can construct it out of many types of fabrics and dress it up or down depending on styling. There are many brands that sell waistcoats for all body types and identities but this pattern is a cut above them all! It's a true work of art and I hope you enjoy it!

xoxo, *Dandy*



SIZE CHART

The Lady Dandy Waistcoat is sized in women's US 2–20 and 18–34, A–H cup sizes. Please use the chart below to pick your size.

The High Bust measurement should be taken above your breasts and the

Full Bust measurement should be taken at the fullest part of your bustline. Take the waist measurement at the smallest part of your torso. Note that it is best to choose your size by your bust measurements (and add or remove from the side seams at the waist if needed). We've given a range for each size, as there is some flexibility in the fit depending on how much ease you desire. If you like a slim fit, size down. If you prefer more ease, size up.

If you're in our Artist, Beat Princess, or Bohemian Princess tiers, make sure to check out our Fit Clinic video series to learn more about measuring yourself, choosing a size, and making fit adjustments.

Not sure which size range to choose? Read more about our two size ranges [here!](#)

| SIZES 2-20 | 2 | 4 | 6 | 8 | 10 | 12 | 14 | 16 | 18 | 20 |
|---------------|--------------------|--------------------|--------------------|--------------------|--------------------|---------------------|-------------------|-------------------|---------------------|---------------------|
| High Bust | 29 in 73.7 cm | 31 in 78.7 cm | 33 in 83.8 cm | 35 in 88.9 cm | 37 in 94 cm | 39 in 99 cm | 41 in 104.1 cm | 43 in 109.2 cm | 45 in 114.3 cm | 47 in 119.4 cm |
| Bust A cup | 30.5 in 77.5 cm | 32.5 in 82.5 cm | 34.5 in 87.6 cm | 36.5 in 92.7 cm | 38.5 in 97.8 cm | 40.5 in 102.9 cm | 42.5 in 108 cm | 44.5 in 113 cm | 46.5 in 118.1 cm | 48.5 in 123.2 cm |
| Bust B/C cup | 31 in 78.7 cm | 33 in 83.8 cm | 35 in 88.9 cm | 37 in 94 cm | 39 in 99 cm | 41 in 104.1 cm | 43 in 109.2 cm | 45 in 114.3 cm | 47 in 119.4 cm | 49 in 124.5 cm |
| Bust D/DD cup | 32 in 81.3 cm | 34 in 86.4 cm | 36 in 91.4 cm | 38 in 96.5 cm | 40 in 101.6 cm | 42 in 106.7 cm | 44 in 111.8 cm | 46 in 116.8 cm | 48 in 121.9 cm | 50 in 127 cm |
| Bust F/G cup | 33 in 83.8 cm | 35 in 88.9 cm | 37 in 94 cm | 39 in 99 cm | 41 in 104.1 cm | 43 in 109.2 cm | 45 in 114.3 cm | 47 in 119.4 cm | 49 in 124.5 cm | 51 in 129.5 cm |
| Bust H cup | 34 in 86.4 cm | 36 in 91.4 cm | 38 in 96.5 cm | 40 in 101.6 cm | 42 in 106.7 cm | 44 in 111.8 cm | 46 in 116.8 cm | 48 in 121.9 cm | 50 in 127 cm | 52 in 132.1 cm |
| Waist | 24 in 61 cm | 26 in 66 cm | 28 in 71.1 cm | 30 in 76.2 cm | 32 in 81.3 cm | 34 in 86.4 cm | 36 in 91.4 cm | 38 in 96.5 cm | 40 in 101.6 cm | 42 in 106.7 cm |

| SIZES 18-34 | 18 | 20 | 22 | 24 | 26 | 28 | 30 | 32 | 34 |
|----------------|---------------------|---------------------|---------------------|---------------------|---------------------|---------------------|---------------------|---------------------|---------------------|
| High Bust | 39.5 in 100.3 cm | 41.5 in 105.4 cm | 43.5 in 110.5 cm | 45.5 in 115.6 cm | 47.5 in 120.7 cm | 49.5 in 125.7 cm | 51.5 in 130.8 cm | 53.5 in 135.9 cm | 55.5 in 141 cm |
| Bust A/B cup | 42.5 in 108 cm | 44.5 in 113 cm | 46.5 in 118.1 cm | 48.5 in 123.2 cm | 50.5 in 128.3 cm | 52.5 in 133.4 cm | 54.5 in 138.4 cm | 56.5 in 143.5 cm | 58.5 in 148.6 cm |
| Bust C cup | 43 in 109.2 cm | 45 in 114.3 cm | 47 in 119.4 cm | 49 in 124.5 cm | 51 in 129.5 cm | 53 in 134.6 cm | 55 in 139.7 cm | 57 in 144.8 cm | 59 in 149.9 cm |
| Bust D/DD cup | 44 in 111.8 cm | 46 in 116.8 cm | 48 in 121.9 cm | 50 in 127 cm | 52 in 132.1 cm | 54 in 137.2 cm | 56 in 142.2 cm | 58 in 147.3 cm | 60 in 152.4 cm |
| Bust F/G cup | 45 in 114.3 cm | 47 in 119.4 cm | 49 in 124.5 cm | 51 in 129.5 cm | 53 in 134.6 cm | 55 in 139.7 cm | 57 in 144.8 cm | 59 in 149.9 cm | 61 in 154.9 cm |
| Bust H cup | 46 in 116.8 cm | 48 in 121.9 cm | 50 in 127 cm | 52 in 132.1 cm | 54 in 137.2 cm | 56 in 142.2 cm | 58 in 147.3 cm | 60 in 152.4 cm | 62 in 157.5 cm |
| Waist | 40 in 101.6 cm | 42 in 106.7 cm | 44 in 111.8 cm | 46 in 116.8 cm | 48 in 121.9 cm | 50 in 127 cm | 52 in 132.1 cm | 54 in 137.2 cm | 56 in 142.2 cm |



FABRIC NOTES

Main fabric: we recommend medium-weight wovens, such as cottons like flannel, twill, corduroy, and sateen; linen and linen blends; wool suitings, flannel, and tweed; brocade; and silk/wool blends.

Lining fabric: the lining fabric will be visible on the back of the waistcoat. We recommend lightweight silks like charmeuse, crepe de chine, or habotai; lining fabrics like rayon bemberg, acetate, or silky polyester; and silk/cotton blends.

MATERIALS & NOTIONS

- Fabric for the waistcoat
- Lining fabric
- Thread to match
- Fusible interfacing (look for lightweight woven or tricot types)
- Six ¾-in (1.9-cm) buttons
- Two 1-in (2.5-cm) adjustable slide buckles

RESOURCES

Here are some of the fabrics and supplies I used for the samples. There are lots of places to purchase fabric, so this is solely a guide you can use as a reference:

Pink Wool Flannel
[similar to this](#)
(Gertie's Waistcoat)

[Yellow Tattersall](#)
(Dandy's Waistcoat)

FIT NOTES

The Lady Dandy Waistcoat is a semi-fitted vest pattern designed to be worn as a layering piece. The pattern is designed to fit with between 3 and 5½ inches (in) (7.6 to 14 cm) of ease in the bust and 3¾ to 6 in (9.5 to 15.2 cm) of ease at the waist. See the charts below for finished garment measurements.

FINISHED MEASUREMENTS

| Sizes 2-20 | 2 | 4 | 6 | 8 | 10 | 12 | 14 | 16 | 18 | 20 |
|---------------|----------|---------|----------|----------|----------|----------|----------|----------|----------|----------|
| Bust | 33.5 in | 35.5 in | 37.5 in | 39.5 in | 41.5 in | 43.5 in | 45.5 in | 47.5 in | 49.5 in | 51.5 in |
| A cup | 85.1 cm | 90.2 cm | 95.3 cm | 100.3 cm | 105.4 cm | 110.5 cm | 115.6 cm | 120.7 cm | 125.7 cm | 130.8 cm |
| Bust | 34 in | 36 in | 38 in | 40 in | 42 in | 44 in | 46 in | 48 in | 50 in | 52 in |
| B/C cup | 86.4 cm | 91.4 cm | 96.5 cm | 101.6 cm | 106.7 cm | 111.8 cm | 116.8 cm | 121.9 cm | 127 cm | 132.1 cm |
| Bust | 35 in | 37 in | 39 in | 41 in | 43 in | 45 in | 47 in | 49 in | 51 in | 53 in |
| D/DD cup | 88.9 cm | 94 cm | 99.1 cm | 104.1 cm | 109.2 cm | 114.3 cm | 119.4 cm | 124.5 cm | 129.5 cm | 134.6 cm |
| Bust | 36 in | 38 in | 40 in | 42 in | 44 in | 46 in | 48 in | 50 in | 52 in | 54 in |
| F/G cup | 91.4 cm | 96.5 cm | 101.6 cm | 106.7 cm | 111.8 cm | 116.8 cm | 121.9 cm | 127 cm | 132.1 cm | 137.2 cm |
| Bust | 37 in | 39 in | 41 in | 43 in | 45 in | 47 in | 49 in | 51 in | 53 in | 55 in |
| H cup | 94 cm | 99.1 cm | 104.1 cm | 109.2 cm | 114.3 cm | 119.4 cm | 124.5 cm | 129.5 cm | 134.6 cm | 139.7 cm |
| Waist | 30 in | 32 in | 34 in | 36 in | 38 in | 40 in | 42 in | 44 in | 46 in | 48 in |
| | 76.2 cm | 81.3 cm | 86.4 cm | 91.4 cm | 96.5 cm | 101.6 cm | 106.7 cm | 111.8 cm | 116.8 cm | 121.9 cm |
| Hips* | 31.5 in | 33.5 in | 35.5 in | 37.5 in | 39.5 in | 41.5 in | 43.5 in | 45.5 in | 47.5 in | 49.5 in |
| | 80 cm | 85.1 cm | 90.2 cm | 95.3 cm | 100.3 cm | 105.4 cm | 110.5 cm | 115.6 cm | 120.7 cm | 125.7 cm |
| Vest Length** | 21.75 in | 22 in | 22.25 in | 22.5 in | 22.75 in | 23 in | 23.25 in | 23.5 in | 23.75 in | 24 in |
| | 55.2 cm | 55.9 cm | 56.5 cm | 57.2 cm | 57.8 cm | 58.4 cm | 59.1 cm | 59.7 cm | 60.3 cm | 61 cm |

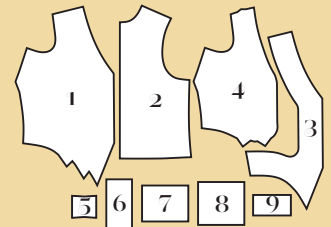
| Sizes 18-34 | 18 | 20 | 22 | 24 | 26 | 28 | 30 | 32 | 34 |
|----------------|----------|----------|----------|----------|----------|----------|----------|----------|----------|
| Bust | 48 in | 50 in | 52 in | 54 in | 56 in | 58 in | 60 in | 62 in | 64 in |
| A/B cup | 121.9 cm | 127 cm | 132.1 cm | 137.2 cm | 142.2 cm | 147.3 cm | 152.4 cm | 157.5 cm | 162.6 cm |
| Bust | 48.5 in | 50.5 in | 52.5 in | 54.5 in | 56.5 in | 58.5 in | 60.5 in | 62.5 in | 64.5 in |
| C cup | 123.2 cm | 128.3 cm | 133.4 cm | 138.4 cm | 143.5 cm | 148.6 cm | 153.7 cm | 158.8 cm | 163.8 cm |
| Bust | 49.5 in | 51.5 in | 53.5 in | 55.5 in | 57.5 in | 59.5 in | 61.5 in | 63.5 in | 65.5 in |
| D/DD cup | 125.7 cm | 130.8 cm | 135.9 cm | 141 cm | 146.1 cm | 151.1 cm | 156.2 cm | 161.3 cm | 166.4 cm |
| Bust | 50.5 in | 52.5 in | 54.5 in | 56.5 in | 58.5 in | 60.5 in | 62.5 in | 64.5 in | 66.5 in |
| F/G cup | 128.3 cm | 133.4 cm | 138.4 cm | 143.5 cm | 148.6 cm | 153.7 cm | 158.8 cm | 163.8 cm | 168.9 cm |
| Bust | 51.5 in | 53.5 in | 55.5 in | 57.5 in | 59.5 in | 61.5 in | 63.5 in | 65.5 in | 67.5 in |
| H cup | 130.8 cm | 135.9 cm | 141 cm | 146.1 cm | 151.1 cm | 156.2 cm | 161.3 cm | 166.4 cm | 171.5 cm |
| Waist | 43.75 in | 45.75 in | 47.75 in | 49.75 in | 51.75 in | 53.75 in | 55.75 in | 57.75 in | 59.75 in |
| | 111.1 cm | 116.2 cm | 121.3 cm | 126.4 cm | 131.4 cm | 136.5 cm | 141.6 cm | 146.7 cm | 151.8 cm |
| Hips* | 45 in | 47 in | 49 in | 51 in | 53 in | 55 in | 57 in | 59 in | 61 in |
| | 114.3 cm | 119.4 cm | 124.5 cm | 129.5 cm | 134.6 cm | 139.7 cm | 144.8 cm | 149.9 cm | 154.9 cm |
| Vest Length** | 23 in | 23.25 in | 23.5 in | 23.75 in | 24 in | 24.25 in | 24.5 in | 24.75 in | 25 in |
| | 58.4 cm | 59.1 cm | 59.7 cm | 60.3 cm | 61 cm | 61.6 cm | 62.2 cm | 62.9 cm | 63.5 cm |

* at bottom opening sideseam


** from front shoulder to lower point of vest

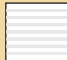
PATTERN PIECES

- Waistcoat Front**
Cut 2 fabric
- Waistcoat Back**
Cut 2 lining on fold
- Front Facing**
Cut 2 fabric, 2 interfacing
- Front Lining**
Cut 2 lining
- Back Waist Tab**
Cut 2 lining
- Back Waist Cinch**
Cut 2 lining
- Welt Pocket**
Cut 2 fabric, 2 interfacing
- Welt Pocket Bag**
Cut 2 lining
- Welt Pocket Interfacing**
Cut 2 interfacing



KEY TO LAYOUTS

 Right side of pattern piece

 Wrong side of pattern piece

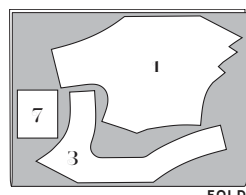
Be sure to note whether the pieces are cut on a double or single layer of fabric. For a double layer, there will be a note indicating FOLD on the layout.

REQUIRED YARDAGE & CUTTING LAYOUTS

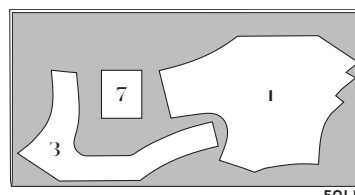
Note: All pattern pieces are shown in a “without nap” layout. You may need additional yardage for directional prints, stripes, plaids, and other prints that need to be matched across seamlines.

Main (1, 3, 7)

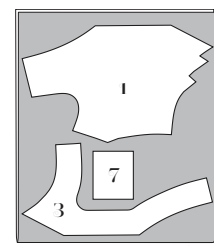
| | Sizes 2-10 | Sizes 12-20 | Sizes 18-24 | Sizes 26-34 |
|-------|---------------|-----------------|-----------------|-----------------|
| 45 in | ¾ yd .8 m | 1⅜ yds 1.3 m | 1⅜ yds 1.3 m | 1½ yds 1.4 m |
| 60 in | ¾ yd .7 m | ⅞ yd .8 m | ⅞ yd .8 m | 1 yd .9 m |



45 in, sizes 2-10
60 in, sizes 26-34



45 in, sizes 12-34

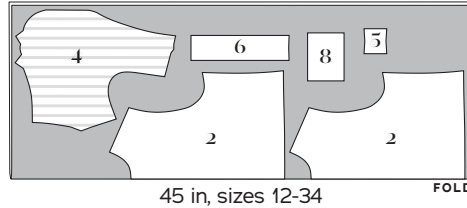
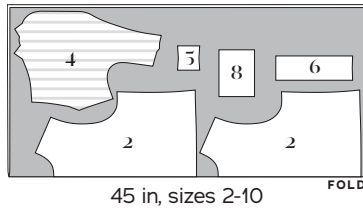
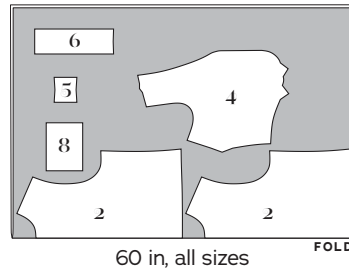


60 in, sizes 2-24

REQUIRED YARDAGE & CUTTING LAYOUTS (CONT'D)

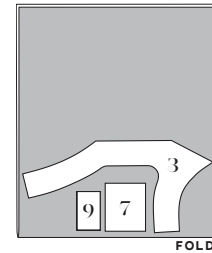
Lining (2, 4, 5, 6, 8)

| | Sizes 2-10 | Sizes 12-20 | Sizes 18-24 | Sizes 26-34 |
|-------|--|--|--|--|
| 45 in | 1 ³ / ₈ yds 1.3 m | 1 ³ / ₄ yds 1.6 m | 1 ⁷ / ₈ yds 1.7 m | 2 yds 1.8 m |
| 60 in | 1 ³ / ₈ yds 1.3 m | 1 ³ / ₈ yds 1.3 m | 1 ¹ / ₂ yds 1.4 m | 1 ⁵ / ₈ yds 1.5 m |



Interfacing (3, 7, 9)

| | Sizes 2-10 | Sizes 12-20 | Sizes 18-24 | Sizes 26-34 |
|-------|--|--|--|--|
| 60 in | ³ / ₄ yd .7 m | ⁷ / ₈ yd .8 m | ⁷ / ₈ yd .8 m | ⁷ / ₈ yd .8 m |



SEWING INSTRUCTIONS

BEFORE SEWING

Transferring marks: Use dressmaker's tracing paper and a tracing wheel to transfer all pattern markings to the wrong side (WS) of your fabric. Mark pattern notches by snipping into the seam allowance with the tip of your scissors.

Interfacing: The front facing and welt pocket need to be stabilized with fusible interfacing prior to sewing. Follow the interfacing cutting instructions on the pattern pieces. Apply fusible interfacing to the WS of the fabric, using a press cloth and steam. Do not rub your iron back and forth; lift it up and press it down for several seconds at a time until interfacing is fully adhered.

NOTES

- ⁵/₈-in (1.5 cm) seam allowances are included on all pattern pieces, except where otherwise noted.
- It is unnecessary to finish any seam allowances, as they will be completely enclosed by the lining.

TIPS

- If you are sewing with a slippery lining fabric, use a layer of tissue to help with cutting and sewing. Lay the tissue on your cutting surface, then lay the fabric on top. Pin your patterns to both the tissue and the fabric, and then cut both together. Treat the tissue and fabric as one when sewing, then tear away the tissue paper when done. The tissue stabilizes the fabric and makes it much easier to cut and sew.

- Welt pockets are complex to explain, but easy to sew! Watch the companion tutorial video for step-by-step instructions so you can see these steps in action.

SEW THE WAISTCOAT

Waistcoat Front

1. Sew front darts: on Waistcoat Front (1), bring dart legs RS together, pinning along marked lines. Stitch along marked lines from dart base to dart point. Backstitch at the beginning but not at the end, leaving a thread tail a few inches long. Tie thread tails by hand. Press dart toward center front (CF). Trim the excess dart fabric that extends past the raw edge to true the darts. Repeat for darts on Front Lining (4).

Welt Pockets

1. Apply interfacing: fuse Welt Pocket Interfacing (9) to WS of waistcoat front, covering welt pocket placement rectangle. If the welt placement rectangle is not visible through the interfacing, re-mark it on the WS using chalk or a water-soluble fabric-marking pen.

2. Attach welt pocket: pin interfaced Welt Pocket (7) to waistcoat front, RS together, matching placement marks. Stitch only the top and bottom long edges of the marked rectangle, starting/stopping and backstitching precisely at each corner. Cut a slit through all layers of fabric along center cutting line between the two stitching lines, stopping at the

diagonal cutting lines on each short end of rectangle. From the opening, clip to each corner along diagonal lines as close as possible to the stitching lines without actually cutting the stitching. From the WS, press just the welt pocket's cut seam allowances open at the top and bottom of the rectangle to create a crease.

3. Create the welt: reach through the cut opening to pull the welt pocket through to the WS of the waistcoat front. Roll the seamline just to the WS of the waistcoat and press the welt pocket flat to the waistcoat front, WS together, making sure it creates a nice rectangular opening. From the waistcoat front WS, press the bottom of the welt pocket up over the opening to create a sharp crease. Using chalk or a water-soluble fabric-marking pen on the pocket WS, draw a line to mark the top of the welt opening. Fold the welt pocket down at the marked line to create the welt and pin into place. From the waistcoat front RS, adjust the welt until it is straight and even. Press from the WS to crease.

4. Secure the welt pocket opening: with the waistcoat front RS up, fold the waistcoat away from the welt pocket to expose the tiny triangle at each end of the welt pocket opening. Stitch the tiny triangle to the welt pocket as close to the waistcoat front/base of the triangle as possible, backstitching at both ends. From the waistcoat RS, stitch in the ditch around the welt opening to secure.

5. Attach the top of the welt pocket lining: pin the top of the Welt Pocket Bag (8) to the top of the welt pocket fabric, RS together, matching notches, keeping waistcoat front free. Stitch. Press seam allowances toward the lining. From the waistcoat front WS, press the welt pocket's top down, forming a crease at the top of the welt opening.

6. Attach the bottom of the welt pocket lining: pin the bottom of the welt pocket lining to the bottom of the welt pocket fabric, RS together, keeping waistcoat front free. Stitch. Press seam allowances toward the lining. Pull the pocket lining down as far as it will go, and press flat, pressing all seam allowances toward the waistcoat hem.

7. Finish and secure the welt pocket: pin the welt pocket side seams RS together to create the pocket bag. Stitch the pocket bag closed, being careful not to catch the waistcoat front in the stitches.

Waistcoat Back

1. Prepare waist tabs and cinches: fold Back Waist Tab (5) lengthwise at foldline, RS together, and pin. Stitch along one short end and long edge, pivoting at the corner and leaving open between attachment circles. Clip across corners and grade seam allowances. Turn tab RS out and press. Repeat for the Back Waist Cinch (6).

2. Sew back waist darts, enclosing back waist tab inside: on outer Waistcoat Back (2), pin dart legs RS together, with the raw edge of the back waist tab sandwiched inside the dart at circle markings. Stitch as for front waist darts. Press the darts toward center back (CB).

3. Sew back waist lining darts: on the waistcoat back lining, pin dart legs RS together and stitch as for front waist darts. Press the darts toward CB.

Lining

1. Sew facing to front lining: clip into seam allowance along curve on lower Front Facing (3). Pin front facing to lining front with RS together, matching notches and spreading the facing to conform to the curve of the lining. Stitch lining to facing, starting at the shoulder seam and ending at the side seam. Grade seam allowances. Clip corners and notch into curves every 1/2 in (1.3 cm). Press seam allowances toward lining.

2. Sew shoulder seams: pin waistcoat front to outer waistcoat back (with the back waist tabs) at shoulder seams, RS together, matching notches. Stitch and press seam allowances open. Repeat for the waistcoat front lining unit and waistcoat back lining.

3. Attach lining at neckline and waistcoat front: pin outer waistcoat unit to waistcoat lining unit along neckline, front opening, and waistcoat front hem, RS together. Stitch in one continuous pass from side seam to side seam, pivoting at corners. Clip across corners and grade seam allowances so those on the outer waistcoat are widest and those on the facing are narrower. Clip curves every 1/2 in (1.3 cm).

4. Understitch facing: with facing opened out and seam allowances underneath, stitch along entire facing 1/8 in (3 mm) from the seamline on facing's RS, catching

seam allowances in stitching and starting/stopping at corners as needed. Press facing and lining to inside of waistcoat, rolling facing seamline slightly to WS so it is hidden inside.

5. Sew back hem: pin outer waistcoat back to waistcoat back lining at hem, RS together. Stitch and grade seam allowances.

6. Sew armscyes: trim $\frac{1}{8}$ in (3 mm) from the front lining and waistcoat back lining's armscye, so that it won't show from the RS of the garment at the armhole. Pin the waistcoat outer unit to the waistcoat lining unit along the armscye seam allowance, RS together. Stitch. Grade seam allowances and clip into curves every $\frac{1}{2}$ in (1.3 cm). Flip waistcoat RS out by pulling the waistcoat fronts through one waistcoat back side seam.

7. Understitch armscyes: with facing opened out and seam allowances underneath, stitch along entire armhole lining $\frac{1}{8}$ in (3 mm) from the seamline on lining's RS, catching seam allowances in stitching and starting/stopping stitching when shoulder gets too narrow to continue. Press lining to inside of waistcoat, rolling seamline slightly to WS so it is hidden inside.

8. Sew first side seam: pin waistcoat front to waistcoat back at right side seam, RS together. Reach through opposite side seam and pull pinned side seam through. Pin right side seam linings RS together with one back waist cinch sandwiched in between at markings. Stitch circle of right side seam

in one continuous pass. Grade seam allowances. Flip waistcoat to RS.

9. Sew second side seam: pin waistcoat front to waistcoat back at left side seam, RS together. Pin back waist cinch to back lining at markings, RS together. Stitch as much of the side seam as possible, beginning and ending stitches in the lining. Grade seam allowances.

Finishing

1. Slipstitch lining at side seam: turn the front and back lining $\frac{5}{8}$ in (1.5 cm) to WS at open side seam. Pin and slipstitch the lining edges closed by hand, being sure to catch the back waist cinch in the seam.

2. Sew buttons and buttonholes: using pattern markings as a placement guide, sew buttonholes by machine on right half of waistcoat front (as worn). Following pattern markings for buttonholes, sew buttons by hand or machine to left half of waistcoat front (as worn).

3. Attach buckle to side back tab: with the waistcoat back facing up, wrap the right back waist tab over the center bar of the adjustable slide buckle and pin into place. Slipstitch tab by hand to secure the buckle. Thread the right back waist cinch through the buckle. Repeat for the other side. Try on the waistcoat and tighten or loosen the waist cinches to adjust the fit.

Enjoy your darling new Lady Dandy Waistcoat!

PATTERN PIECE LOCATION GUIDE

Here is a list to help you locate the pattern pieces on the letter-size tiled pages and A0 pattern sheets.
The tiled pieces and A0 sheets are included as separate pdf files as part of this digital pattern.

SIZES 2-20

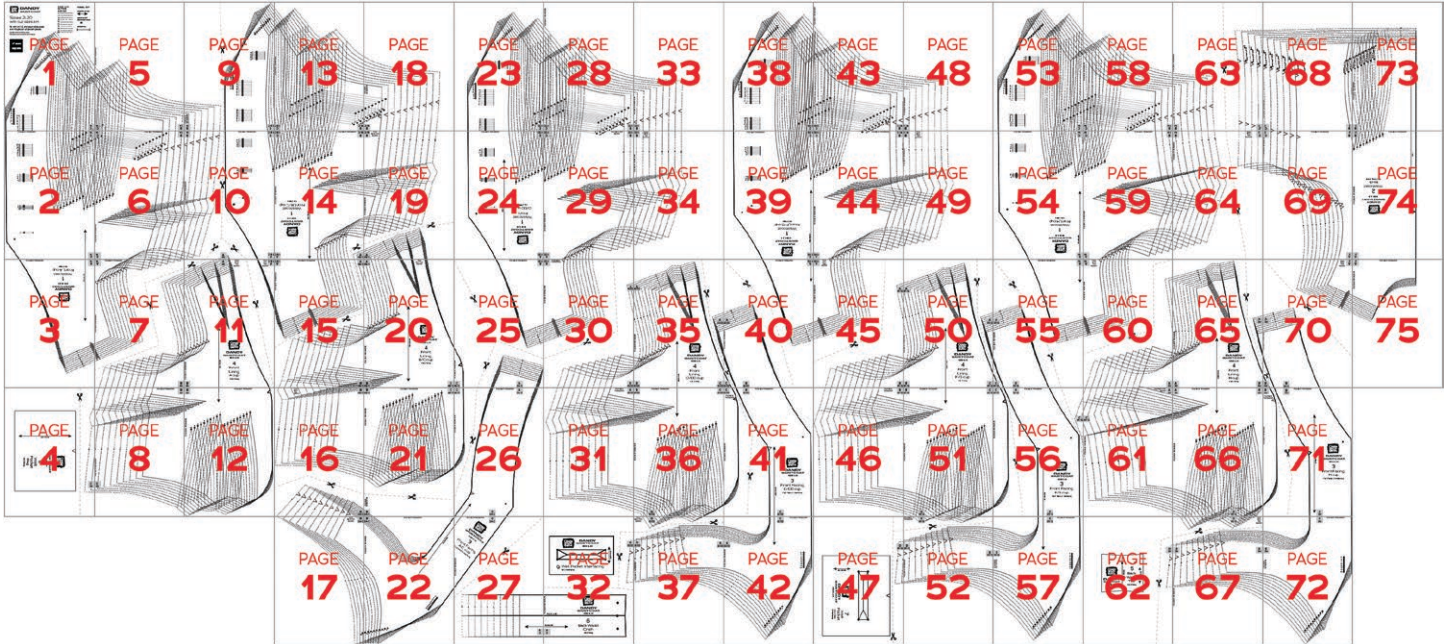
| PC# | Piece Name | Tiled | A0 |
|--|-------------------------|-------------------------|----|
| A Cup 1-12, 16-17, 21-22, 25-27 | | | |
| 1 | Waistcoat Front | 1-3, 5-7, 9-10 | 1 |
| 3 | Front Facing | 16-17, 21-22, 25-27 | 1 |
| 4 | Front Lining | 4, 7-8, 10-12 | 1 |
| B/C Cup 9-11, 13-22, 25-27 | | | |
| 1 | Waistcoat Front | 9-11, 13-15, 18-19 | 2 |
| 3 | Front Facing | 16-17, 21-22, 25-27 | 1 |
| 4 | Front Lining | 14-16, 19-21, 25-26 | 2 |
| D/DD Cup 23-25, 28-37, 40-42 | | | |
| 1 | Waistcoat Front | 23-25, 28-30, 33-34 | 3 |
| 3 | Front Facing | 32, 35, 37, 40-42 | 3 |
| 4 | Front Lining | 30-31, 35-37, 40-41 | 3 |
| F/G Cup 38-40, 43-52, 55-57 | | | |
| 1 | Waistcoat Front | 38-40, 43-45, 48-49 | 4 |
| 3 | Front Facing | 47, 50, 52, 55-57 | 4 |
| 4 | Front Lining | 45-46, 50-52, 55-56 | 4 |
| H Cup 53-56, 58-61, 63-67, 70-71 | | | |
| 1 | Waistcoat Front | 53-55, 58-60, 63-64 | 5 |
| 3 | Front Facing | 62, 65, 67, 70-72 | 5 |
| 4 | Front Lining | 56, 60-61, 65-67, 70-71 | 5 |
| All Cups 4, 27, 32, 47, 62-64, 68-70, 73-75 | | | |
| 2 | Waistcoat Back | 63-64, 68-70, 73-75 | 2 |
| 5 | Back Waist Tab | 62 | 2 |
| 6 | Back Waist Cinch | 27, 32 | 2 |
| 7 | Welt Pocket | 47 | 2 |
| 8 | Welt Pocket Bag | 4 | 2 |
| 9 | Welt Pocket Interfacing | 32 | 2 |

SIZES 18-34

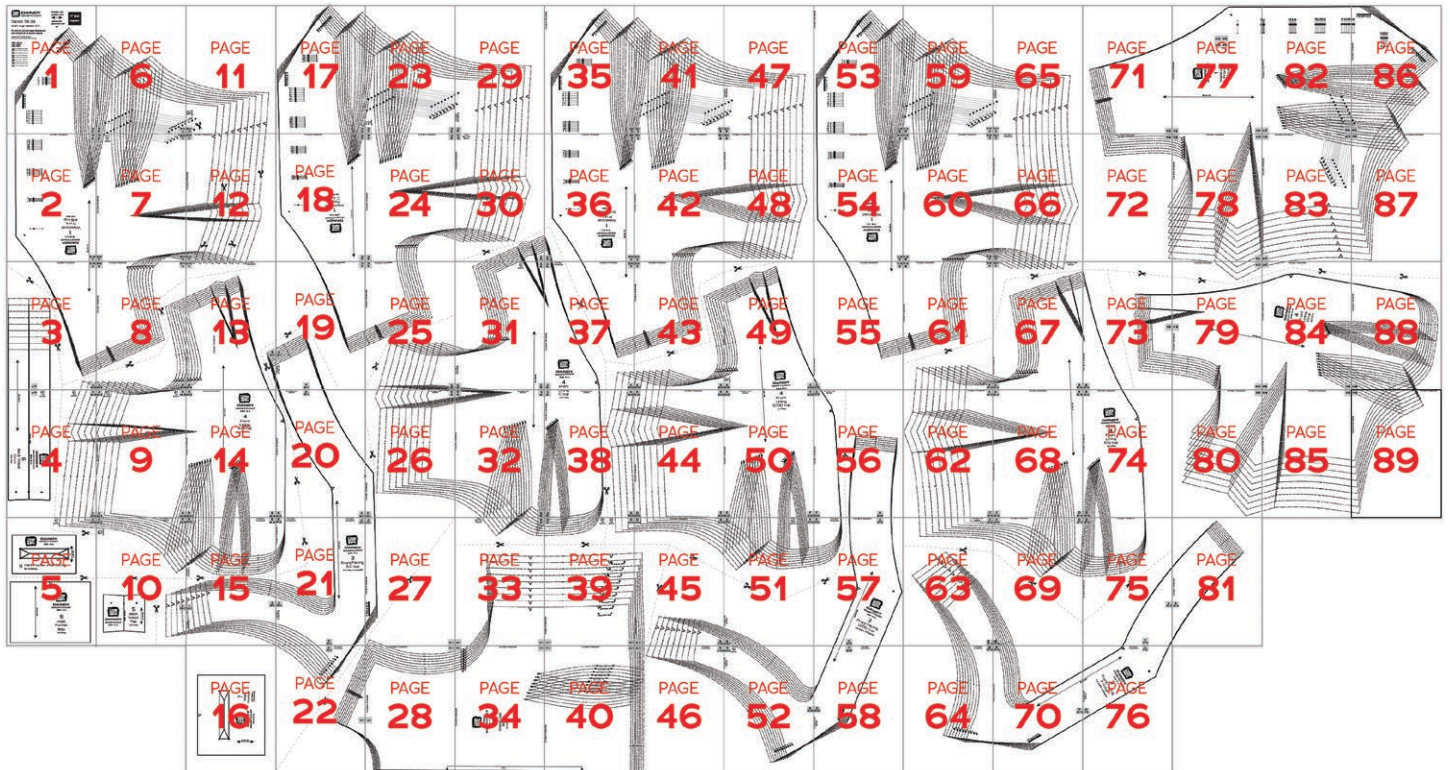
| PC# | Piece Name | Tiled | A0 |
|---|-------------------------|--------------------------------|----|
| A/B Cup 1-15, 19-22, 26-27 | | | |
| 1 | Waistcoat Front | 1-3, 6-8, 11-13 | 1 |
| 3 | Front Facing | 10, 13, 15, 19-22, 26-27 | 1 |
| 4 | Front Lining | 3-5, 8-10, 13-15, 20-21 | 1 |
| C Cup 10, 13, 15, 17-27, 29-33, 36-39 | | | |
| 1 | Waistcoat Front | 17-19, 23-25, 29-30 | 2 |
| 3 | Front Facing | 10, 13, 15, 19-22, 26-27 | 1 |
| 4 | Front Lining | 25-26, 30-33, 36-39 | 2 |
| D/DD Cup 35-39, 41-52, 55-58 | | | |
| 1 | Waistcoat Front | 35-37, 41-43, 47-48 | 3 |
| 3 | Front Facing | 45-46, 51-52, 56-58 | 3 |
| 4 | Front Lining | 37-39, 43-45, 49-51, 55-57 | 3 |
| F/G Cup 53-55, 59-70, 73-76, 81 | | | |
| 1 | Waistcoat Front | 53-55, 59-61, 65-67 | 4 |
| 3 | Front Facing | 63-64, 69-70, 75-76, 81 | 4 |
| 4 | Front Lining | 61-63, 67-69, 73-75 | 4 |
| H Cup 63-64, 69-73, 75-89 | | | |
| 1 | Waistcoat Front | 71-72, 77-79, 82-84, 86-87 | 5 |
| 3 | Front Facing | 63-64, 69-70, 75-76, 81 | 4 |
| 4 | Front Lining | 73, 79-80, 84-85, 88-89 | 5 |
| All Cups 3-6, 10, 16, 22, 27-28, 33-34, 39-40, 45-46 | | | |
| 2 | Waistcoat Back | 22, 27-28, 33-34, 39-40, 45-46 | 2 |
| 5 | Back Waist Tab | 10 | 2 |
| 6 | Back Waist Cinch | 3-4 | 2 |
| 7 | Welt Pocket | 16 | 2 |
| 8 | Welt Pocket Bag | 5 | 2 |
| 9 | Welt Pocket Interfacing | 5 | 2 |

TILING MAPS

SIZES 2-20



SIZES 18-34



HOW TO USE THIS PATTERN

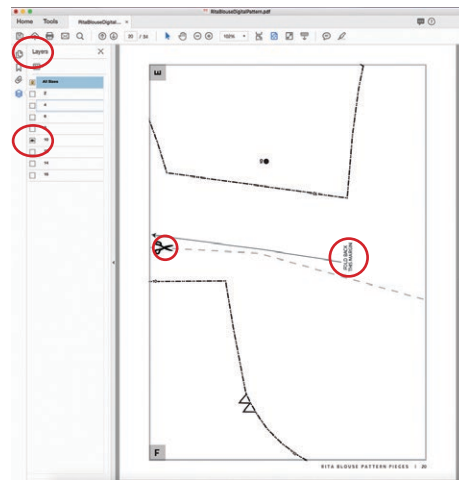
The pattern pieces are tiled so you can print them on Letter (8½" x 11") or A4 size paper. You can also send the A0 pattern sheet PDF to a local or online printer (like www.pdfplotting.com) to print on large sheets (36" x 48" for U.S. or A0 for international).

This pattern includes size layers. To get the best results, open either the Tiled or A0 pattern pieces PDF in Acrobat Reader.

Open the Layers Palette (View> Show/Hide>Navigation Panes>Layers) and hide all of the layer(s) except for the ones you want to print by clicking

on the eye icon.

The All Sizes layer has general pattern information and will always print.



WORKING WITH THE TILED PIECES

Go to File>Print and change the page range to the pages you need for the pieces you've chosen (see Pattern Pieces Printing Index). Make sure the Page Sizing settings to 100% or Actual Size. Test this after printing by measuring the 1" test box on the first page of the bodice pattern pieces.

Cut apart any pattern pieces that share a page by cutting on the gray long dashed lines. Then fold back the page margins on each page as directed.

Tape the pages together, butting up the folded page edges with the gray margin lines, matching up the letters in gray boxes.

MORE FROM GERTIE

On Instagram: Stay in the loop and get inspired.

On YouTube: Learn beginner and advanced sewing skills and techniques through my tutorials, watch episodes of my Gertie's World series, and join regular live streams.

On Patreon: Access monthly patterns and tutorial videos.

At CharmPatterns.com: Shop my sewing patterns and accessories.

