

CHARM  
ARTIST  
COLLECTIVE



# ARTIST APRON DRESS

A PATREON EXCLUSIVE PATTERN



Meet the Artist Apron Dress! For this design, I was envisioning something a fabulous lady artist in the '50s might wear—but of course, I wanted it to be super versatile, too. Not only can you make a lovely apron-style dress for layering, you can also sew the sweetest wrap sundress ever.

We've given you lots of options to make this your own. Make a short version to wear over the Audrey Cigarette Pants and a Barbie Top, or make the full-length version to wear as a pinafore dress over a blouse. We loved creating a carpenter version in waxed cotton, complete with a bib pocket and divided pockets on the skirt that will fit all your tools and paint brushes. Feeling a little flirtier? Make the sundress version and show some skin! Add the optional ruffle to the skirt for a summery pastoral look.

I hope you love sewing the Artist Apron Dress!

xxxxx, *Gertie*

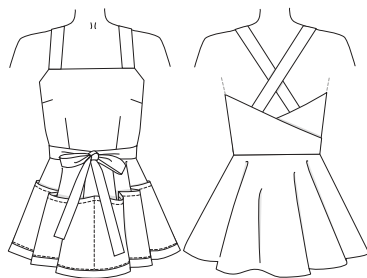
**KEY SKILLS**

- Perfecting patch pockets
- Fully lining a wrap bodice
- Sewing with waxed cotton

**DESIGN OPTIONS**

- Short or long skirt length
- Halter Strap or Shoulder Straps that cross in the back
- Carpenter Pocket or Side Seam Pockets
- Bib Pocket

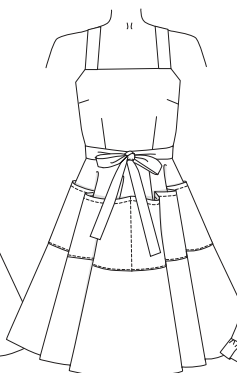
**COMBINATION IDEAS**



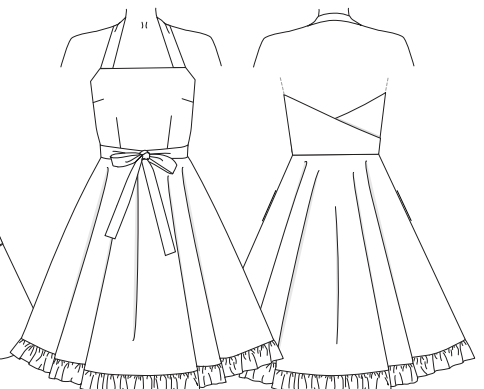
Short Apron with Carpenter Pocket and Shoulder Straps



Long Apron with Carpenter Pocket, Bib Pocket, Halter Strap and Rivets



Long Apron with Carpenter Pocket and Shoulder Straps



Sundress with Side Seam Pockets, Halter Strap and Ruffle

## SIZE CHART

The Artist Apron Dress is sized in women's US 2–20 and 18–34, A–H cup sizes. Please use the chart below to pick your size. The High Bust measurement should be taken above your breasts and the Full Bust measurement should be taken at the fullest part of your bustline. Take the waist measurement at the smallest part of your torso. Note that it is best to choose your size by your bust measurements and add or remove from the side seams at the waist if needed. If you're in our Artist, Beat Princess, or Bohemian Princess tiers, make sure to check out our first fit clinic from February to learn more about measuring yourself, choosing a size, and making fit adjustments. Not sure which size range to choose? Read more about our [new 18-34 size range here!](#)



### SIZES

2-20	2	4	6	8	10	12	14	16	18	20
High Bust	29 in 73.7 cm	31 in 78.7 cm	33 in 83.8 cm	35 in 88.9 cm	37 in 94 cm	39 in 99 cm	41 in 104.1 cm	43 in 109.2 cm	45 in 114.3 cm	47 in 119.4 cm
Bust A cup	30.5 in 77.5 cm	32.5 in 82.5 cm	34.5 in 87.6 cm	36.5 in 92.7 cm	38.5 in 97.8 cm	40.5 in 102.9 cm	42.5 in 108 cm	44.5 in 113 cm	46.5 in 118.1 cm	48.5 in 123.2 cm
Bust B/C cup	31 in 78.7 cm	33 in 83.8 cm	35 in 88.9 cm	37 in 94 cm	39 in 99 cm	41 in 104.1 cm	43 in 109.2 cm	45 in 114.3 cm	47 in 119.4 cm	49 in 124.5 cm
Bust D/DD cup	32 in 81.3 cm	34 in 86.4 cm	36 in 91.4 cm	38 in 96.5 cm	40 in 101.6 cm	42 in 106.7 cm	44 in 111.8 cm	46 in 116.8 cm	48 in 121.9 cm	50 in 127 cm
Bust F/G cup	33 in 83.8 cm	35 in 88.9 cm	37 in 94 cm	39 in 99 cm	41 in 104.1 cm	43 in 109.2 cm	45 in 114.3 cm	47 in 119.4 cm	49 in 124.5 cm	51 in 129.5 cm
Bust H cup	34 in 86.4 cm	36 in 91.4 cm	38 in 96.5 cm	40 in 101.6 cm	42 in 106.7 cm	44 in 111.8 cm	46 in 116.8 cm	48 in 121.9 cm	50 in 127 cm	52 in 132.1 cm
Waist	24 in 61 cm	26 in 66 cm	28 in 71.1 cm	30 in 76.2 cm	32 in 81.3 cm	34 in 86.4 cm	36 in 91.4 cm	38 in 96.5 cm	40 in 101.6 cm	42 in 106.7 cm
Hips	36 in 91.4 cm	38 in 96.5 cm	40 in 101.6 cm	42 in 106.7 cm	44 in 111.8 cm	46 in 116.8 cm	48 in 121.9 cm	50 in 127 cm	52 in 132.1 cm	54 in 137.2 cm

### SIZES

18-34	18	20	22	24	26	28	30	32	34
High Bust	39.5 in 100.3 cm	41.5 in 105.4 cm	43.5 in 110.5 cm	45.5 in 115.6 cm	47.5 in 120.7 cm	49.5 in 125.7 cm	51.5 in 130.8 cm	53.5 in 135.9 cm	55.5 in 141 cm
Bust A/B cup	42.5 in 108 cm	44.5 in 113 cm	46.5 in 118.1 cm	48.5 in 123.2 cm	50.5 in 128.3 cm	52.5 in 133.4 cm	54.5 in 138.4 cm	56.5 in 143.5 cm	58.5 in 148.6 cm
Bust C cup	43 in 109.2 cm	45 in 114.3 cm	47 in 119.4 cm	49 in 124.5 cm	51 in 129.5 cm	53 in 134.6 cm	55 in 139.7 cm	57 in 144.8 cm	59 in 149.9 cm
Bust D/DD cup	44 in 111.8 cm	46 in 116.8 cm	48 in 121.9 cm	50 in 127 cm	52 in 132.1 cm	54 in 137.2 cm	56 in 142.2 cm	58 in 147.3 cm	60 in 152.4 cm
Bust F/G cup	45 in 114.3 cm	47 in 119.4 cm	49 in 124.5 cm	51 in 129.5 cm	53 in 134.6 cm	55 in 139.7 cm	57 in 144.8 cm	59 in 149.9 cm	61 in 154.9 cm
Bust H cup	46 in 116.8 cm	48 in 121.9 cm	50 in 127 cm	52 in 132.1 cm	54 in 137.2 cm	56 in 142.2 cm	58 in 147.3 cm	60 in 152.4 cm	62 in 157.5 cm
Waist	40 in 101.6 cm	42 in 106.7 cm	44 in 111.8 cm	46 in 116.8 cm	48 in 121.9 cm	50 in 127 cm	52 in 132.1 cm	54 in 137.2 cm	56 in 142.2 cm
Hips	48 in 121.9 cm	50 in 127 cm	52 in 132.1 cm	54 in 137.2 cm	56 in 142.2 cm	58 in 147.3 cm	60 in 152.4 cm	62 in 157.5 cm	64 in 162.6 cm

## FABRIC NOTES

For the short apron or Carpenter Dress versions, we recommend medium- to heavy-weight wovens: canvas, denim, corduroy, or waxed cotton. For the Sundress, we recommend light- to medium-weight wovens: cottons like broadcloth, chambray, poplin, sateen, shirting, and lightweight twill; and linen and linen blends. It is not recommended to use a knit fabric for this pattern.

## MATERIALS & NOTIONS

- Fabric for dress or apron
- Thread to match
- 1¼-in-wide (3 cm) fusible stay tape to stabilize pocket upper edge (alternatively, cut a strip from a scrap of fusible interfacing yardage)
- Six size 8 mm x 6 mm rivets and rivet setter (Carpenter Dress version only)
- Two ¾-in buttons (Shoulder Strap version only)



## RESOURCES

Here are some of the fabrics and supplies I used for the samples and in the video tutorial. There are lots of places to purchase fabric, so this is solely a guide you can use as a reference:

[Essex Linen Blend in Nautical](#) (Susie's blue dress)

[Stretch Cotton Sateen](#) (Susie's Lizabeth Raglan Top)

[Japanese Cotton Linen Broadcloth Floral Print in White Blue](#) (Susie's sundress)

[Japanese Cotton Linen Broadcloth Floral Print](#) (Gertie's sundress)

[10.5 oz Cotton Canvas in Aquamarine](#) (Gertie's short apron)

[Cotton Wax Cloth in Olive](#) (Gertie's carpenter dress)

[8 mm Rivets](#)

[Kam Snap Setter](#)



## FIT NOTES

The Artist Apron Dress is an adjustable wrap garment that is cinched at the waist with ties. The bust is designed to fit with between 1 and 7 inches (in) (2.5 to 17.8 cm) of ease, depending on how tightly the dress is wrapped. The waist has 1/2 in (1.3 cm) of ease when wrapped tightly but is adjustable up to 4 in (10.2 cm). Hip measurements are not important, as the skirt is very full. See the charts below for finished garment measurements.



**NOTE:** These measurements are for the apron dress wrapped as tightly as possible. Please note that the garment is adjustable up to 4 in more in the waist and 7 in more in the bust. This gives some flexibility to wear the dress tightly as a sundress, or more loosely as an apron, layered over other garments.

## FINISHED MEASUREMENTS

Sizes 2-20	2	4	6	8	10	12	14	16	18	20
Bust A	31.5 in 80 cm	33.5 in 85.1 cm	35.5 in 90.2 cm	37.5 in 95.3 cm	39.5 in 100.3 cm	41.5 in 105.4 cm	43.5 in 110.5 cm	45.5 in 115.6 cm	47.5 in 120.7 cm	49.5 in 125.7 cm
Bust B/C	32 in 81.3 cm	34 in 86.4 cm	36 in 91.4 cm	38 in 96.5 cm	40 in 101.6 cm	42 in 106.7 cm	44 in 111.8 cm	46 in 116.8 cm	48 in 121.9 cm	50 in 127 cm
Bust D/DD	33 in 83.8 cm	35 in 88.9 cm	37 in 94 cm	39 in 99.1 cm	41 in 104.1 cm	43 in 109.2 cm	45 in 114.3 cm	47 in 119.4 cm	49 in 124.5 cm	51 in 129.5 cm
Bust F/G	34 in 86.4 cm	36 in 91.4 cm	38 in 96.5 cm	40 in 101.6 cm	42 in 106.7 cm	44 in 111.8 cm	46 in 116.8 cm	48 in 121.9 cm	50 in 127 cm	52 in 132.1 cm
Bust H	35 in 88.9 cm	37 in 94 cm	39 in 99.1 cm	41 in 104.1 cm	43 in 109.2 cm	45 in 114.3 cm	47 in 119.4 cm	49 in 124.5 cm	51 in 129.5 cm	53 in 134.6 cm
Waist	24.5 in 62.2 cm	26.5 in 67.3 cm	28.5 in 72.4 cm	30.5 in 77.5 cm	32.5 in 82.6 cm	34.5 in 87.6 cm	36.5 in 92.7 cm	38.5 in 97.8 cm	40.5 in 102.9 cm	42.5 in 108 cm
Skirt Length (Long)	26 in 66 cm	26.5 in 67.3 cm	27 in 68.6 cm	27.5 in 69.9 cm	28 in 71.1 cm	28.5 in 72.4 cm	29 in 73.7 cm	29.5 in 74.9 cm	30 in 76.2 cm	30.5 in 77.5 cm
Skirt Length (Short)	15.88 in 40.3 cm	15.94 in 40.5 cm	16 in 40.6 cm	16.06 in 40.8 cm	16.13 in 41 cm	16.19 in 41.1 cm	16.25 in 41.3 cm	16.31 in 41.4 cm	16.38 in 41.6 cm	16.44 in 41.8 cm
Sweep (Full Skirt)	192 in 487.7 cm	197 in 500.4 cm	202 in 513.1 cm	207 in 525.8 cm	212 in 538.5 cm	217 in 551.2 cm	222 in 563.9 cm	227 in 576.6 cm	232 in 589.3 cm	237 in 602 cm

Sizes 18-34	18	20	22	24	26	28	30	32	34
Bust A/B	44.5 in 113 cm	46.5 in 118.1 cm	48.5 in 123.2 cm	50.5 in 128.3 cm	52.5 in 133.4 cm	54.5 in 138.4 cm	56.5 in 143.5 cm	58.5 in 148.6 cm	60.5 in 153.7 cm
Bust C	45 in 114.3 cm	47 in 119.4 cm	49 in 124.5 cm	51 in 129.5 cm	53 in 134.6 cm	55 in 139.7 cm	57 in 144.8 cm	59 in 149.9 cm	61 in 154.9 cm
Bust D/DD	46 in 116.8 cm	48 in 121.9 cm	50 in 127 cm	52 in 132.1 cm	54 in 137.2 cm	56 in 142.2 cm	58 in 147.3 cm	60 in 152.4 cm	62 in 157.5 cm
Bust F/G	47 in 119.4 cm	49 in 124.5 cm	51 in 129.5 cm	53 in 134.6 cm	55 in 139.7 cm	57 in 144.8 cm	59 in 149.9 cm	61 in 154.9 cm	63 in 160 cm
Bust H	48 in 121.9 cm	50 in 127 cm	52 in 132.1 cm	54 in 137.2 cm	56 in 142.2 cm	58 in 147.3 cm	60 in 152.4 cm	62 in 157.5 cm	64 in 162.6 cm
Waist	40.5 in 102.9 cm	42.5 in 108 cm	44.5 in 113 cm	46.5 in 118.1 cm	48.5 in 123.2 cm	50.5 in 128.3 cm	52.5 in 133.4 cm	54.5 in 138.4 cm	56.5 in 143.5 cm
Skirt Length (Long)	29.5 in 74.9 cm	30 in 76.2 cm	30.5 in 77.5 cm	31 in 78.7 cm	31.5 in 80 cm	32 in 81.3 cm	32.5 in 82.6 cm	33 in 83.8 cm	33.5 in 85.1 cm
Skirt Length (Short)	16.31 in 41.4 cm	16.38 in 41.6 cm	16.44 in 41.8 cm	16.5 in 41.9 cm	16.56 in 42.1 cm	16.63 in 42.2 cm	16.69 in 42.4 cm	16.75 in 42.5 cm	16.81 in 42.7 cm
Sweep (Full Skirt)	226 in 574 cm	231 in 586.7 cm	236 in 599.4 cm	241 in 612.1 cm	246 in 624.8 cm	251 in 637.5 cm	256 in 650.2 cm	261 in 662.9 cm	266 in 675.6 cm

# REQUIRED YARDAGE & CUTTING LAYOUTS

## IMPORTANT NOTES

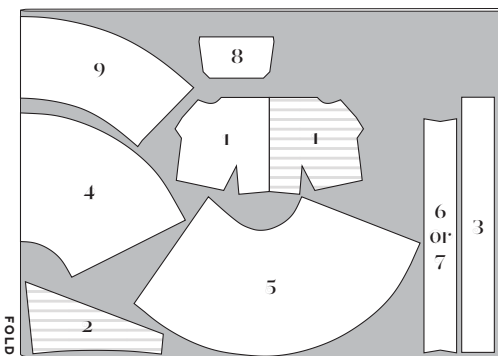
- All pattern pieces are shown in a “without nap” layout. You may need additional yardage for directional prints, stripes, plaids, and other prints that need to be matched across seamlines.
- Most of the layouts are shown on a crosswise layout. The full width of the fabric is opened out and a fold is made perpendicular to the selvages. Pieces are then arranged parallel to the crossgrain.
- Note when cut-on-fold pieces are opened out to cut the full piece.

## SIZES 2-20

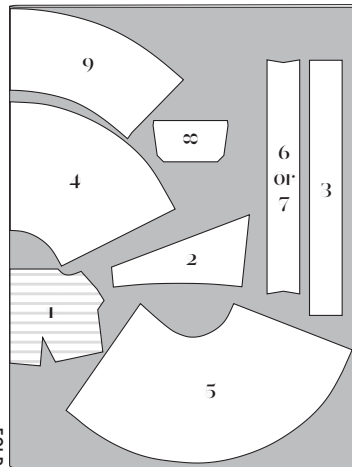
### Short Apron

(1, 2, 3, 4, 5, 6 or 7, 8, 9)

	Sizes 2-10	Sizes 12-20
45 in	3 <sup>5</sup> / <sub>8</sub> yds 3.3 m	4 yds 3.6 m
60 in	2 <sup>5</sup> / <sub>8</sub> yds 2.4 m	3 yds 2.7 m



45 in, all sizes

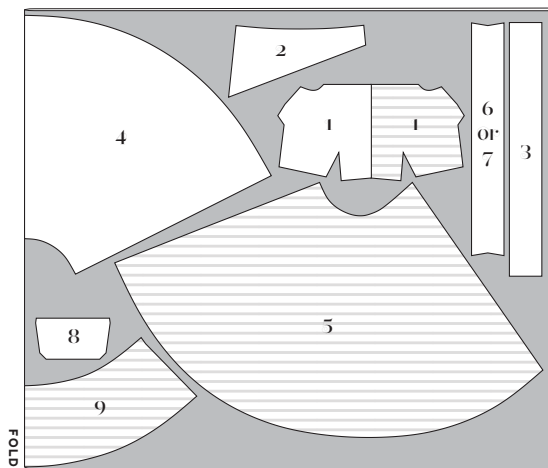


60 in, all sizes

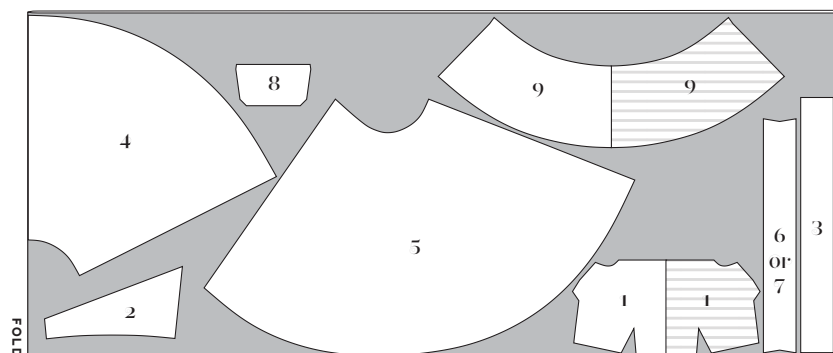
### Long Apron

(1, 2, 3, 4, 5, 6 or 7, 8, 9)

	Sizes 2-10	Sizes 12-20
45 in	6 <sup>1</sup> / <sub>8</sub> yds 5.6 m	7 <sup>1</sup> / <sub>2</sub> yds 6.9 m
60 in	3 <sup>7</sup> / <sub>8</sub> yds 3.5 m	4 <sup>5</sup> / <sub>8</sub> yds 4.2 m



60 in, all sizes

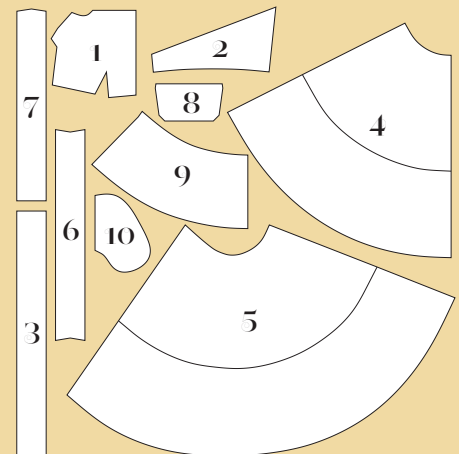


45 in, all sizes

## PATTERN PIECES

- Bodice Front**  
Cut 1 fabric on fold, 1 lining on fold
- Bodice Back**  
Cut 2 fabric, 2 lining
- Waist Ties**  
Cut 2 fabric
- Skirt Front**  
Cut 1 fabric on fold
- Skirt Back**  
Cut 2 fabric
- Halter Strap**  
Cut 1 fabric
- Shoulder Straps**  
Cut 2 fabric
- Bib Pocket**  
Cut 1 fabric
- Carpenter Pocket**  
Cut 1 fabric on fold, 1 lining on fold  
**NOTE:** \*If using a heavy-weight fabric like waxed cotton, do not line the pocket.
- Side Seam Pocket**  
Cut 4 fabric

\*See page 8 for information on cutting the optional ruffle.



### KEY TO LAYOUTS

- Right side of pattern piece
- Wrong side of pattern piece

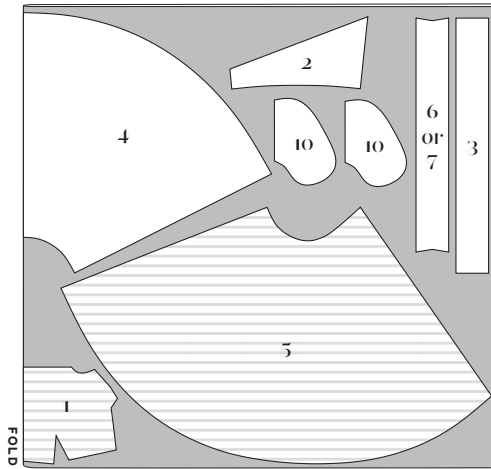
Be sure to note whether the pieces are cut on a double or single layer of fabric. For a double layer, there will be a note indicating FOLD on the layout.

# REQUIRED YARDAGE & CUTTING LAYOUTS (CONT'D)

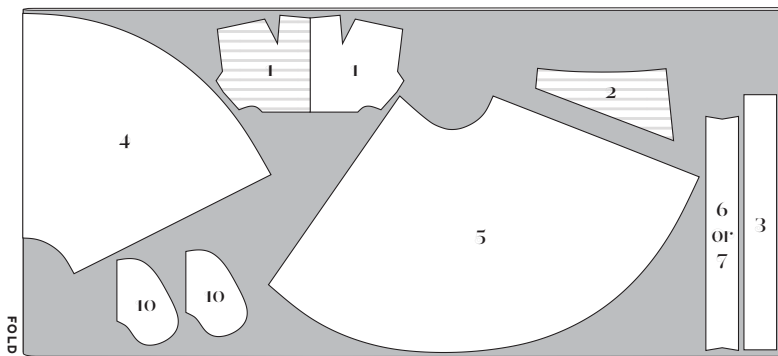
## Sundress

(1, 2, 3, 4, 5, 6 or 7, 10)

	Sizes 2-10	Sizes 12-20
45 in	5 <sup>5</sup> / <sub>8</sub> yds 5.1 m	6 <sup>3</sup> / <sub>8</sub> yds 5.8 m
60 in	3 <sup>1</sup> / <sub>2</sub> yds 3.2 m	4 <sup>5</sup> / <sub>8</sub> yds 4.2 m



60 in, all sizes



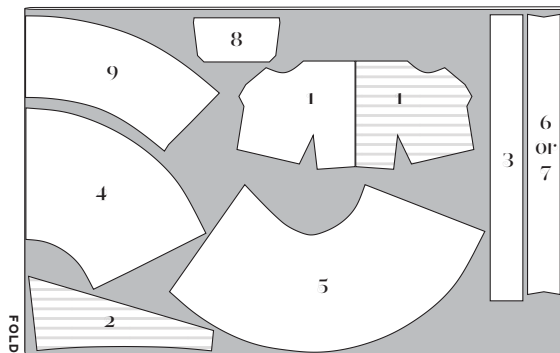
45 in, all sizes

## SIZES 18-34

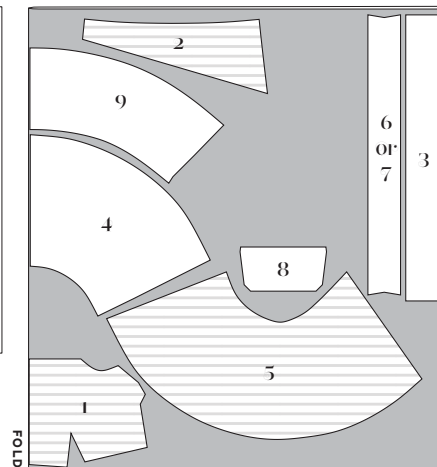
### Short Apron

(1, 2, 3, 4, 5, 6 or 7, 8, 9)

	Sizes 18-24	Sizes 26-34
45 in	4 yds 3.7 m	4 <sup>3</sup> / <sub>8</sub> yds 4 m
60 in	3 yds 2.7 m	3 <sup>5</sup> / <sub>8</sub> yds 3.3 m



45 in, all sizes



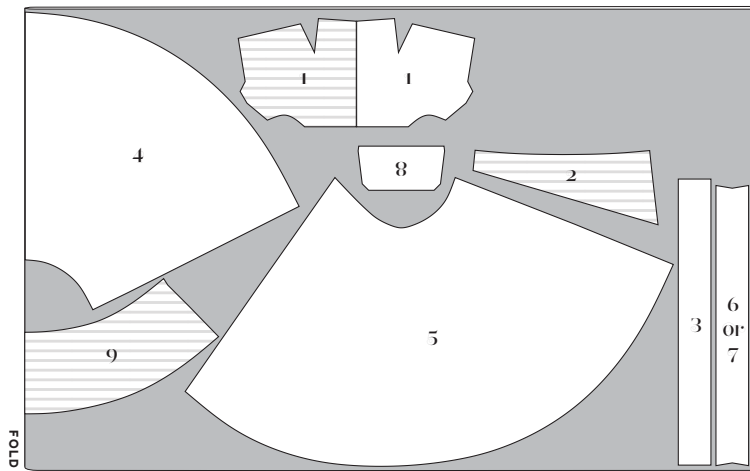
60 in, all sizes

# REQUIRED YARDAGE & CUTTING LAYOUTS (CONT'D)

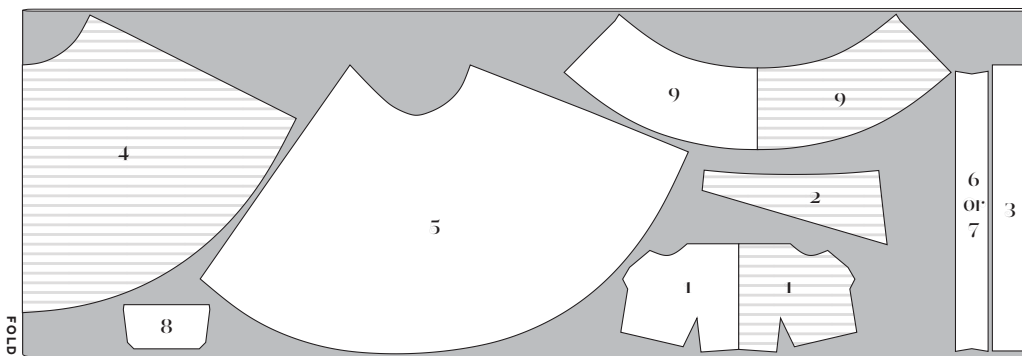
## Long Apron

(1, 2, 3, 4, 5, 6 or 7, 8, 9)

	Sizes 18-24	Sizes 26-34
45 in	7½ yds 6.9 m	8⅝ yds 7.9 m
60 in	5⅝ yds 5.1 m	6 yds 5.5 m



60 in, all sizes

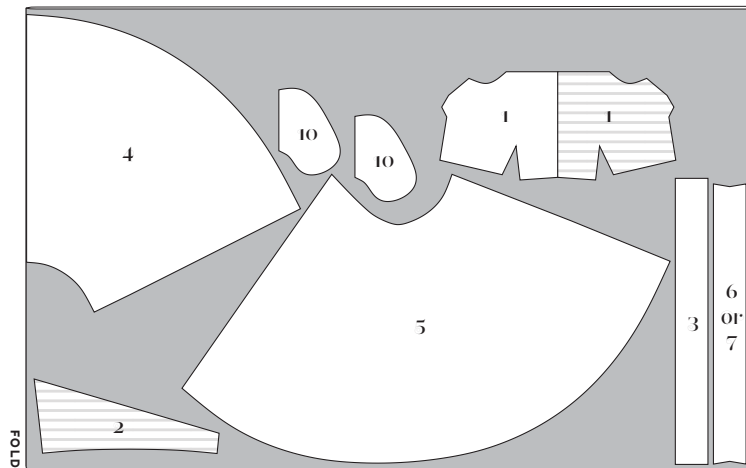


45 in, all sizes

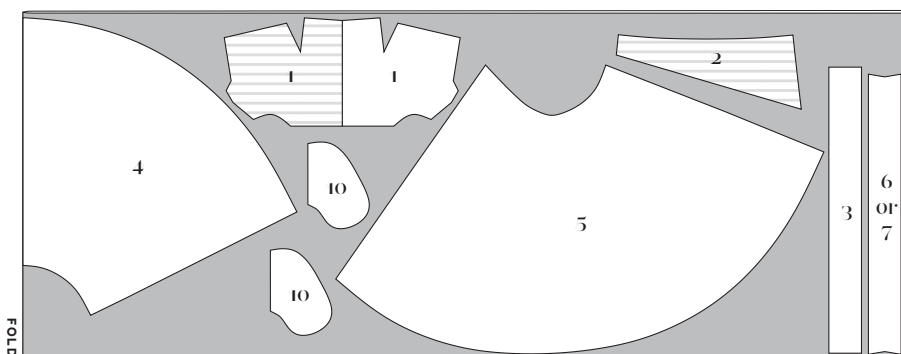
## Sundress

(1, 2, 3, 4, 5, 6 or 7, 10)

	Sizes 18-24	Sizes 26-34
45 in	6½ yds 5.9 m	7⅞ yds 6.5 m
60 in	5⅜ yds 4.9 m	6 yds 5.5 m



60 in, all sizes



45 in, all sizes

# REQUIRED YARDAGE & CUTTING LAYOUTS (CONT'D)

## BOTH SIZE RANGES

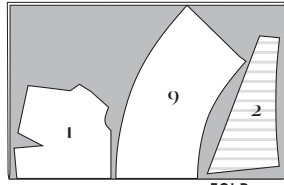
### Apron Lining

(1, 2, 9)

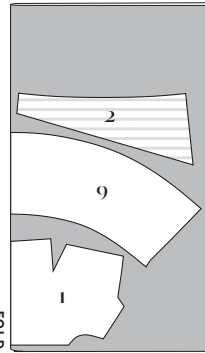
	Sizes 2-10	Sizes 12-20
45 in	1 yd .9 m	1½ yds 1.4 m
60 in	1⅛ yd 1 m	1⅛ yd 1 m

	Sizes 18-24	Sizes 26-34
45 in	1½ yds 1.4 m	1¾ yds 1.6 m
60 in	1⅛ yd 1 m	1¼ yds 1.1 m

Note: if making apron out of waxed canvas, do not cut lining for piece 9.



45 in, sizes 2-10  
60 in, all sizes



45 in, sizes 12-34  
crosswise layout

### Sundress Lining

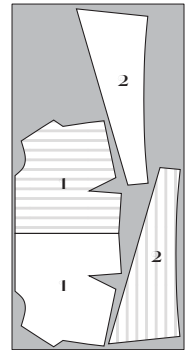
(1, 2)

	Sizes 2-10	Sizes 12-20
45 in	⅝ yd .6 m	¾ yds .7 m
60 in	½ yd .5 m	⅝ yd .6 m

	Sizes 18-24	Sizes 26-34
45 in	¾ yd .7 m	⅞ yd .8 m
60 in	⅝ yd .6 m	¾ yd .7 m



45 in, sizes 2-10  
60 in, all sizes



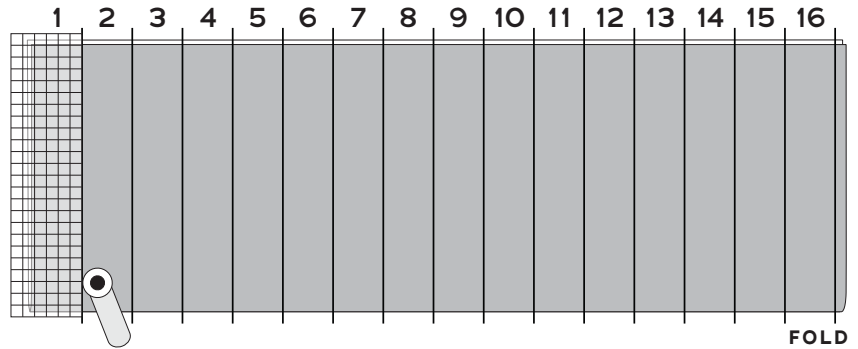
45 in, sizes 12-34  
fabric not folded

## OPTIONAL RUFFLE

To calculate the fabric you will need for the 3-in-deep ruffle, multiply the full skirt's sweep (see Finished Measurements on page 4) by 2.5.

**Never made a ruffle before?** We've got you covered! Refer to the table below for the yardage you'll need, as well as the number of 4¼-in (10.8 cm) strips of fabric you'll need to cut from your chosen width of fabric.

Once you have sewn the strips together, trim the ruffle to the length listed.



*A long quilting ruler, cutting mat, and rotary cutter makes cutting ruffle strips a breeze!*

Sizes 2-20	2	4	6	8	10	12	14	16	18	20
<b>45 in</b> (fabric required)	1⅜ yds 1.2 m	1½ yds 1.4 m	1½ yds 1.4 m	1½ yds 1.4 m	1⅝ yds 1.5 m	1⅝ yds 1.5 m	1⅝ yds 1.5 m	1⅝ yds 1.5 m	1¾ yds 1.6 m	1¾ yds 1.6 m
Strips to cut	11	12	12	12	13	13	13	13	14	14
<b>60 in</b> (fabric required)	1⅛ yds 1 m	1⅛ yds 1 m	1⅛ yds 1 m	1⅛ yds 1 m	1¼ yds 1.1 m	1¼ yds 1.1 m	1¼ yds 1.1 m	1¼ yds 1.1 m	1¼ yds 1.1 m	1⅜ yds 1.2 m
Strips to cut	9	9	9	9	10	10	10	10	10	11
<b>Total length needed</b>	480 in 1219.2 cm	492.5 in 1251 cm	505 in 1282.7 cm	517.5 in 1314.5 cm	530 in 1346.2 cm	542.5 in 1378 cm	555 in 1409.7 cm	567.5 in 1441.5 cm	580 in 1473.2 cm	592.5 in 1505 cm

Sizes 18-34	18	20	22	24	26	28	30	32	34
<b>45 in</b> (fabric required)	1⅝ yds 1.5 m	1¾ yds 1.6 m	1¾ yds 1.6 m	1¾ yds 1.6 m	1⅞ yds 1.7 m	1⅞ yds 1.7 m	1⅞ yds 1.7 m	1⅞ yds 1.7 m	2 yds 1.8 m
Strips to cut	13	14	14	14	15	15	15	15	16
<b>60 in</b> (fabric required)	1¼ yds 1.1 m	1¼ yds 1.1 m	1⅜ yds 1.2 m	1⅜ yds 1.2 m	1⅜ yds 1.2 m	1⅜ yds 1.2 m	1⅜ yds 1.2 m	1½ yds 1.4 m	1½ yds 1.4 m
Strips to cut	10	10	11	11	11	11	11	12	12
<b>Total length needed</b>	565 in 1435.1 cm	577.5 in 1466.9 cm	590 in 1498.6 cm	602.5 in 1530.4 cm	615 in 1562.1 cm	627.5 in 1593.9 cm	640 in 1625.6 cm	652.5 in 1657.4 cm	665 in 1689.1 cm



# SEWING INSTRUCTIONS

## BEFORE SEWING

**Transferring marks:** Use dressmaker's tracing paper and a tracing wheel to transfer all pattern markings to the wrong side (WS) of your fabric. Mark pattern notches by snipping into the seam allowance with the tip of your scissors.

**Interfacing:** Some of the pattern pieces need to be stabilized with fusible interfacing prior to sewing. Follow the interfacing cutting instructions on the pattern pieces. Apply fusible interfacing to the WS of the fabric, using a press cloth and steam. Do not rub your iron back and forth; lift it up and press it down for several seconds at a time until interfacing is fully adhered.

**Seam finishing:** If finishing seams with a serger, serge the following seam allowances (without trimming the edges) before construction.

- Vertical sides of Skirt Front and Skirt Backs
- All sides of Side Seam Pockets
- All sides of Bib Pocket
- Upper and lower edge of Ruffle

## NOTES

- 5/8-in (1.5 cm) seam allowances are included on all pattern pieces, except where otherwise noted.
- If you don't have a serger, consider using a zigzag or overlock stitch on your sewing machine.
- If you find it difficult to see notches after serging, you may wish to mark them with chalk, thread tacks, or another marking tool.
- For the short Apron Dress, cut skirt pieces at apron cutting line.
- For the optional ruffle on the Sundress, cut a strip of fabric 4¼ in wide and make the length 2½ times the circumference of your skirt, after the hem has hung for 24 hours and been leveled. You will need to piece together multiple strips of fabric to reach the correct length. See the chart on p. 8.

## TIPS FOR SEWING WITH WAXED COTTON

- Start with a new universal needle and change your needle after you finish sewing.
- Match your needle size to the weight of your fabric. We used a lightweight (6.25 oz) waxed cotton with a 70/10 size needle. Heavier cottons and canvases will require a large needle. Consider using a jeans needle for very heavyweight waxed canvas.
- Do not use your iron. Finger press all seams—the heat from your fingers will help press the seam open.
- Instead of using a fabric marker or pencil, mark your fabric with a Hera marker or sharp point.
- Topstitch the waist ties and shoulder straps/halter strap along both long edges.
- Omit the lining on the bodice and pockets (turn in seam allowances and topstitch edges instead), and consider leaving the hem raw.
- Waxed fabrics do not fray, so seam finishing is not necessary.
- Creasing the fabric will cause permanent markings—embrace these imperfections and don't overthink it. The more distressed, the better. Your waxed cotton apron will improve with age as it gets lots of use!

## SEW THE APRON DRESS

*The following steps apply to all versions.*

### Bodice

**1. Sew bust darts:** on Bodice Front (1), match the dart legs, right sides (RS) together, then stitch from the dart base to the dart point. Backstitch at the beginning but not at the point, leaving a few inches of thread at the points. Tie off the threads and trim. Press the bust darts down.

**2. Sew waist darts:** the front waist darts have a cut-out section. To sew them, match the dart's cut edges and stitch 5/8 in (1.5 cm) from the raw edge, starting from the base and following the marked stitching lines to the dart point. Cut the dart legs open to just below the point. Press dart legs open and tip of dart flat.

**3. Sew side seams:** with RS together, pin bodice front to Bodice Backs (2), matching back notch to front bust dart. Stitch side seams, leaving open between circles on the left side seam. Press seam allowances open.

**4. Sew Waist Ties (3):** fold waist ties lengthwise, RS together. Stitch around long edges and one short edge; pivot at the corners. Trim corners and seam allowances to 1/4 in (6 mm). Turn waist ties RS out, making sure corners are crisp by using a point turner, knitting needle, or pin to gently poke or pull them out. Press flat.

**5. Baste waist ties to bodice:** with RS together, pin waist tie raw edge to bodice back along short edge, making sure to position between seam allowances. Baste, using a long machine stitch.

*Proceed to the next step for the optional Bib Pocket, otherwise skip to Skirt section below.*

## Bib Pocket

**1. Prepare Bib Pocket (8):** apply fusible interfacing strip to upper edge of bib pocket WS. Finish upper edge and press top edge seam allowance 5/8 in (1.5 cm) to WS. Topstitch 1/2 in (1.3 cm) from RS. Press pocket's side and bottom seam allowances 5/8 in to WS, making sure that the top seam allowance corners are folded down behind the pocket so they won't be exposed.

**2. Sew bib pocket to bodice front:** place bib pocket RS up on bodice front's RS, matching circle marks. Pin bib pocket along side and bottom edges. Topstitch side and bottom of bib pocket 1/8 in (3 mm) from edge, being sure to stitch back and forth several times at the top of pocket opening to reinforce.

**3. Sew (optional) pencil pocket:** transfer the stitching line to the bib pocket using a fabric marker, chalk, or hera marker. Topstitch the line from RS, being sure to secure at the top of the pocket opening.

**4. Add rivets (Carpenter Dress, optional):** attach rivets at upper corners of bib pocket.

*Choose one skirt and pockets variation.*

## Skirt (with Carpenter Pocket)

**1. Attach Carpenter Pocket (9) lining:** pin carpenter pocket to pocket lining, RS together, along top and bottom edges. Stitch, leaving sides open. Trim seam allowances to 1/4 in (6 mm) and press. Turn pocket RS out, press flat. Baste sides closed using 1/2-in (1.3 cm) seam allowance. Topstitch carpenter pocket top edge using a 1-in (2.5 cm) seam allowance.

**2. Sew pocket to skirt front:** pin carpenter pocket to Skirt Front (4), matching lower edge to marked line and matching circle marks. Topstitch lower edge of pocket. Baste pocket sides to skirt front sides using 1/2-in (1.3 cm) seam allowance.

**3. Topstitch individual pockets:** transfer the vertical stitching lines at center front and as marked to the carpenter pocket using a fabric marker, chalk, or hera marker. Pin pocket to skirt front along stitching lines, matching circles on pocket to circles on skirt front. Topstitch the lines from RS, being sure to stitch back and forth several times at the top of pocket opening to reinforce.

**4. Sew side seams:** pin the skirt front to Skirt Backs (5) at the side seams, RS together, matching notches. Stitch and press seam allowances open.

## Skirt (with Side Seam Pockets)

**1. Attach the pockets:** pin the Side Seam Pockets (10) to the Skirt Front (4) and Skirt Backs (5), matching the notches and using a 3/8-in (1 cm) seam allowance. Stitch. Press the pockets away from the skirt.

**2. Sew side seams:** pin the skirt front to skirt back at the side seams, RS together, making sure the pockets align, and stitch, pivoting at the top and bottom of the pockets and stitching around the pocket edges. Clip into the pocket pivot points on the skirt back seam allowances, and press the pockets toward the skirt front. Press the skirt seam allowances open above and below the pockets.

*Choose one strap variation.*

## Shoulder Straps

**1. Sew Shoulder Straps (7):** pin shoulder straps RS together. Stitch around strap long edges, leaving one short end open, pivoting at corners. Trim seam allowances and turn shoulder strap RS out. Press flat.

**2. Attach shoulder strap to bodice front:** pin open end of each shoulder strap to RS of bodice front at circles, with the outer edge of the strap lined up with the 5/8-in seamline on bodice front, and straps angled inward. (Tip: Mark with chalk where the seam allowances meet to get a precise pivot point for your strap). Baste short open ends of straps to bodice front.

## Halter Strap

**1. Sew Halter Strap (6):** pin halter strap RS together. Stitch long edges of strap, leaving short ends open. Trim seam allowances and turn halter strap RS out. Press flat.

**2. Attach halter strap to bodice:** pin ends of halter strap to RS of bodice front at circles, with the outer edges of the strap lined up with the  $\frac{5}{8}$ -in seamlines on bodice front. (Tip: Mark with chalk where the seam allowances meet to get a precise pivot point for your strap). Baste short open ends of straps to bodice front.

*The remaining steps apply to all versions.*

## Dress

**1. Sew bodice to skirt:** pin bodice to skirt at waist, RS together, matching notches. Stitch and press seam allowances toward bodice.

**2. Sew bodice lining:** repeat steps 1–3 in the Bodice section to sew lining, leaving the right side seam open between circles. Press seam allowances open.

**3. Sew lining to bodice:** turn waist seam allowance of lining  $\frac{5}{8}$  in (1.5 cm) to WS and press. With RS together and straps sandwiched between bodice front and lining, pin lining to bodice along all edges except waist seam. Stitch along all edges except waist seam, pivoting as necessary. Trim seam allowances so that those on the bodice are the widest and those on the lining are narrower. Clip into curves every  $\frac{1}{2}$  in (1.3 cm).

**4. Understitch bodice lining:** with lining opened out from the bodice and seam allowances underneath, stitch upper edges of lining on RS  $\frac{1}{8}$  in (3 mm) from seamline, catching seam allowances in stitching. Press bodice upper edge, rolling seamline toward WS.

**5. Topstitch waist tie opening:** pin waist tie opening of bodice to lining at left side, WS together. Stitch around waist tie opening  $\frac{1}{8}$  in (3 mm) from edge and pivoting at corners. Trim seam allowances of bodice and lining around waist tie opening.

**6. Hem open back edge:** finish raw side edge of skirt backs and press  $\frac{5}{8}$  in (1.5 cm) to WS. Topstitch side back hem in place from RS of skirt.

**7. Hand-stitch lining to waist seam:** pin lining seam allowance to WS of bodice at waist seam so the lining just covers the bodice waistline seam allowance. Stitch by hand using a slipstitch.

**8. Attach straps to dress back (shoulder strap version only):** pin shoulder straps to WS of bodice back at circles, crossing in back. Try on dress and adjust length as necessary. Add buttonholes on strap where pinned. Attach corresponding buttons on inside of bodice back at circle marks.

**9. Add rivets (Carpenter Dress with halter strap only):** attach rivets on bodice upper edge at the sides of each strap.

## Hem

**1. Allow dress to hang for 24 hours before hemming:** try on the skirt, wearing the shoes you plan to wear with it. Even the hem by measuring up from the floor and marking the desired hemline plus  $\frac{1}{2}$  in (1.3 cm) hem allowance all the way around the skirt. Trim along the marked line.

**2. Sew the hem (or choose Ruffle option below):** finish raw edge of hem and press  $\frac{1}{2}$  in (1.3 cm) to WS. Topstitch hem in place from RS of skirt. Press hem flat.

## Ruffle (Optional)

**1. Sew the ruffle hem:** finish one long edge of ruffle and press  $\frac{1}{2}$  in (1.3 cm) to WS. Topstitch in place.

**2. Gather ruffle:** sew two lines of gathering stitches within seam allowance of ruffle's upper edge. Sew first line of gathering stitches  $\frac{1}{2}$  in (1.3 cm) from raw edge and second line of gathering stitches  $\frac{1}{4}$  in (6 mm) from raw edge. Pull up bobbin threads to gather ruffle.

**3. Attach ruffle to dress:** pin ruffle to hem edge RS together, adjusting and distributing gathers evenly. Stitch the ruffle in place and press seam allowance toward skirt.

*Enjoy your fetching new Artist Apron Dress!*

# PATTERN PIECE LOCATION GUIDE

Here is a list to help you locate the pattern pieces on the letter-size tiled pages and A0 pattern sheets.  
The tiled pieces and A0 sheets are included as separate pdf files as part of this digital pattern.

## SIZES 2-20

PC#	Piece Name	Tiled	A0
1	Bodice Front, A Cup	65-68	4
1	Bodice Front, B/C Cup	67-70	1
1	Bodice Front, D/DD Cup	71-74	3
1	Bodice Front, F/G Cup	73-76	3
1	Bodice Front, H Cup	77-80	3
2	Bodice Back	40, 45, 49, 50, 54, 55	2
3	Waist Ties	10, 15, 20, 25, 30, 35	1
4	Skirt Front	1-3, 6-9, 11-14, 16-19, 21-23, 26-27	1, 2
5	Skirt Back	19, 22-30, 32-49, 51-54, 57-58	3, 4
6	Halter Strap	36, 41, 46, 51, 56, 59	1
7	Shoulder Straps	2-5	2
8	Bib Pocket	9-10, 14-15	1
9	Carpenter Pocket	59-64	1
10	Side Seam Pocket	26, 31	3

## SIZES 18-34

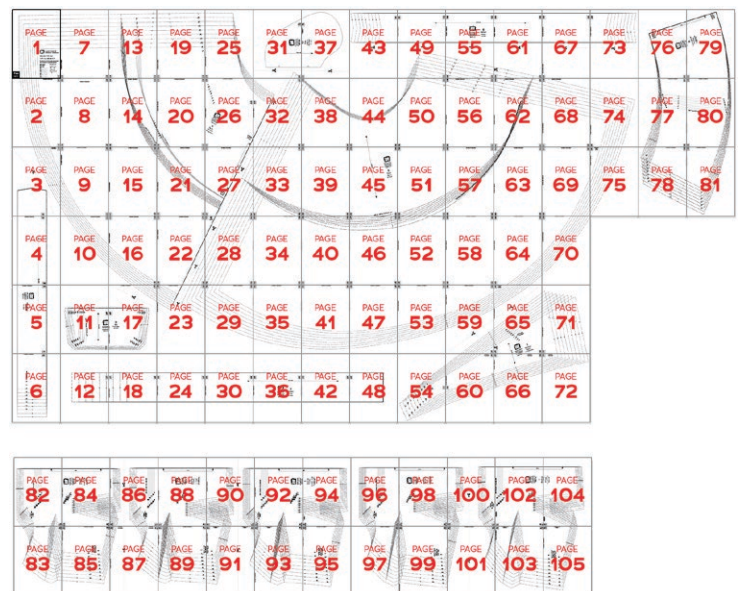
PC#	Piece Name	Tiled	A0
1	Bodice Front, A/B Cup	82-87	1
1	Bodice Front, C Cup	86-91	1
1	Bodice Front, D/DD Cup	90-95	1
1	Bodice Front, F/G Cup	96-101	1
1	Bodice Front, H Cup	100-105	2
2	Bodice Back	54, 59-60, 65-66, 71-72	4
3	Waist Ties	12, 18, 24, 30, 36, 42, 48	2
4	Skirt Front	1-3, 7-10, 13-17, 19-23, 25-28, 32	2, 3
5	Skirt Back	22-23, 27-29, 31-35, 37-41, 44-47, 49-53, 55-59, 61-65, 67-70, 74-75	4, 5
6	Halter Strap	43, 49, 51, 61, 67, 73	2
7	Shoulder Straps	3-6	2
8	Bib Pocket	11, 17	1
9	Carpenter Pocket	76-81	2
10	Side Seam Pocket	31, 37	1

## TILING MAPS

### SIZES 2-20



### SIZES 18-34



## HOW TO USE THIS PATTERN

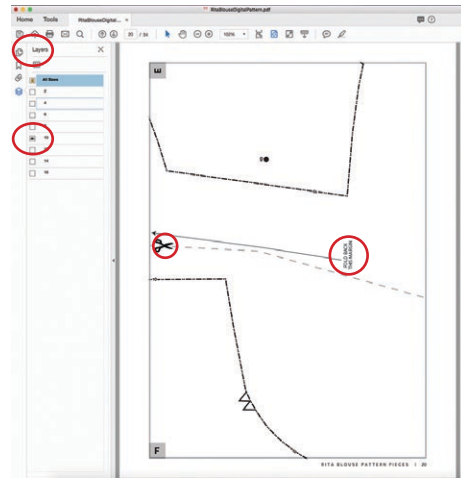
The pattern pieces are tiled so you can print them on Letter (8½" x 11") or A4 size paper. You can also send the A0 pattern sheet PDF to a local or online printer (like [www.pdfplotting.com](http://www.pdfplotting.com)) to print on large sheets (36" x 48" for U.S. or A0 for international).

This pattern includes size layers. To get the best results, open either the Tiled or A0 pattern pieces PDF in Acrobat Reader.

Open the Layers Palette (View> Show/Hide>Navigation Panes>Layers) and hide all of the layer(s) except for the ones you want to print by clicking

on the eye icon.

The All Sizes layer has general pattern information and will always print.



## WORKING WITH THE TILED PIECES

Go to File>Print and change the page range to the pages you need for the pieces you've chosen (see Pattern Pieces Printing Index). Make sure the Page Sizing settings to 100% or Actual Size. Test this after printing by measuring the 1" test box on the first page of the bodice pattern pieces.

Cut apart any pattern pieces that share a page by cutting on the gray long dashed lines. Then fold back the page margins on each page as directed.

Tape the pages together, butting up the folded page edges with the gray margin lines, matching up the letters in gray boxes.

## MORE FROM GERTIE

**On Instagram:** Stay in the loop and get inspired.

**On YouTube:** Learn beginner and advanced sewing skills and techniques through my tutorials, watch episodes of my Gertie's World series, and join regular live streams.

**On Patreon:** Access monthly patterns and tutorial videos.

**At CharmPatterns.com:** Shop my sewing patterns and accessories.

