

**CHARM ARTIST COLLECTIVE SEWRENA COLLECTION**

Sizes 18-34  
with cup sizes A-H

¾ inch (1.5 cm) seam allowances are included on all pattern pieces.

**PAGE 1 OF 3**

**PATTERN PIECE INDEX**

- 1 Front Neck Facing
- 2 Back Neck Facing
- 3 Short Sleeve
- 4 Sleeve Hem Facing
- 5 Petal Collar Front
- 6 Petal Collar Side
- 8 Petal Collar Facing
- 9 Petal Cuff
- 10 Petal Cuff Facing
- 11 French Cuff
- 14 Dickey Collar

**SIZE 18-34 PATTERN SIZE KEY**

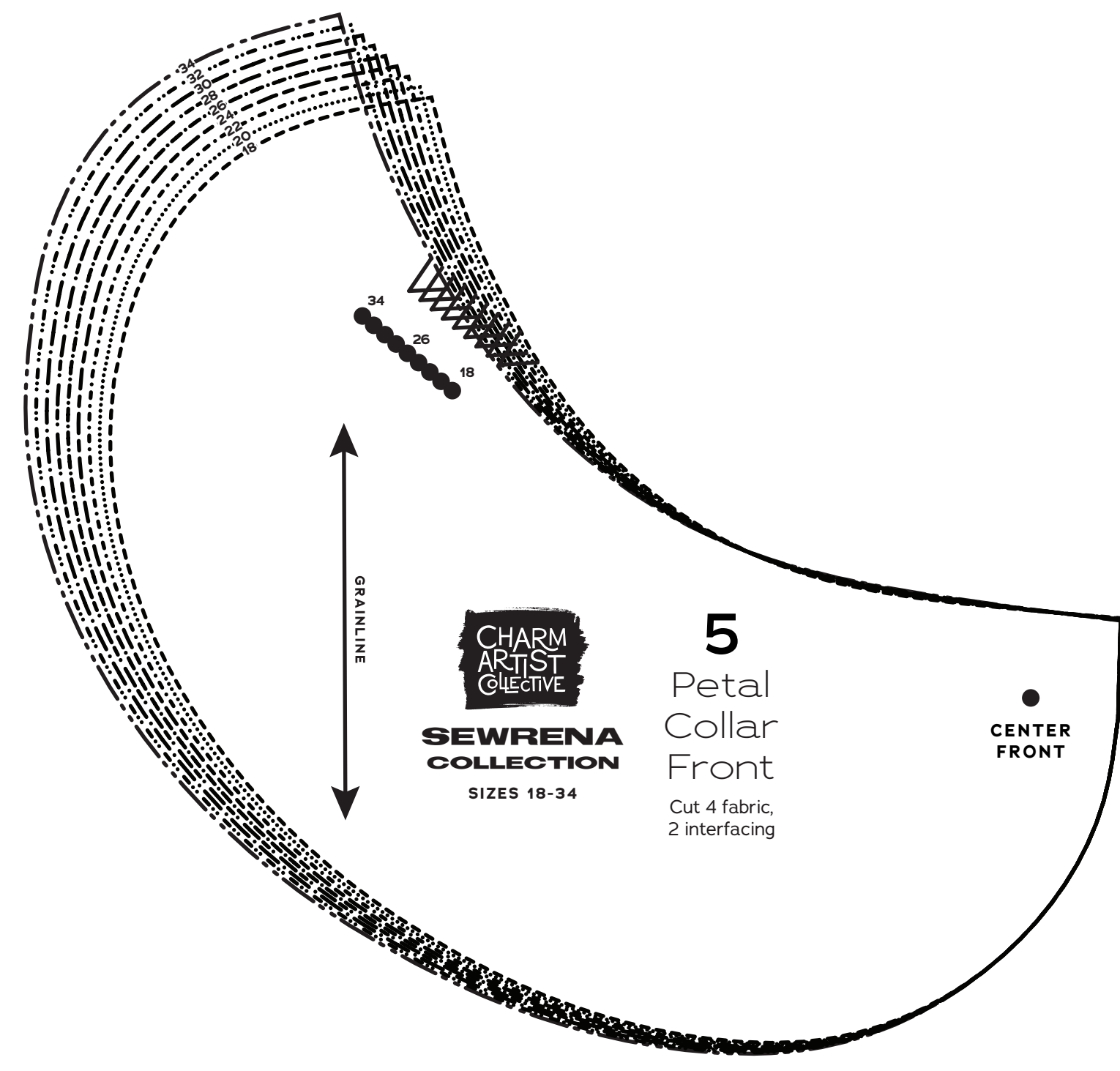
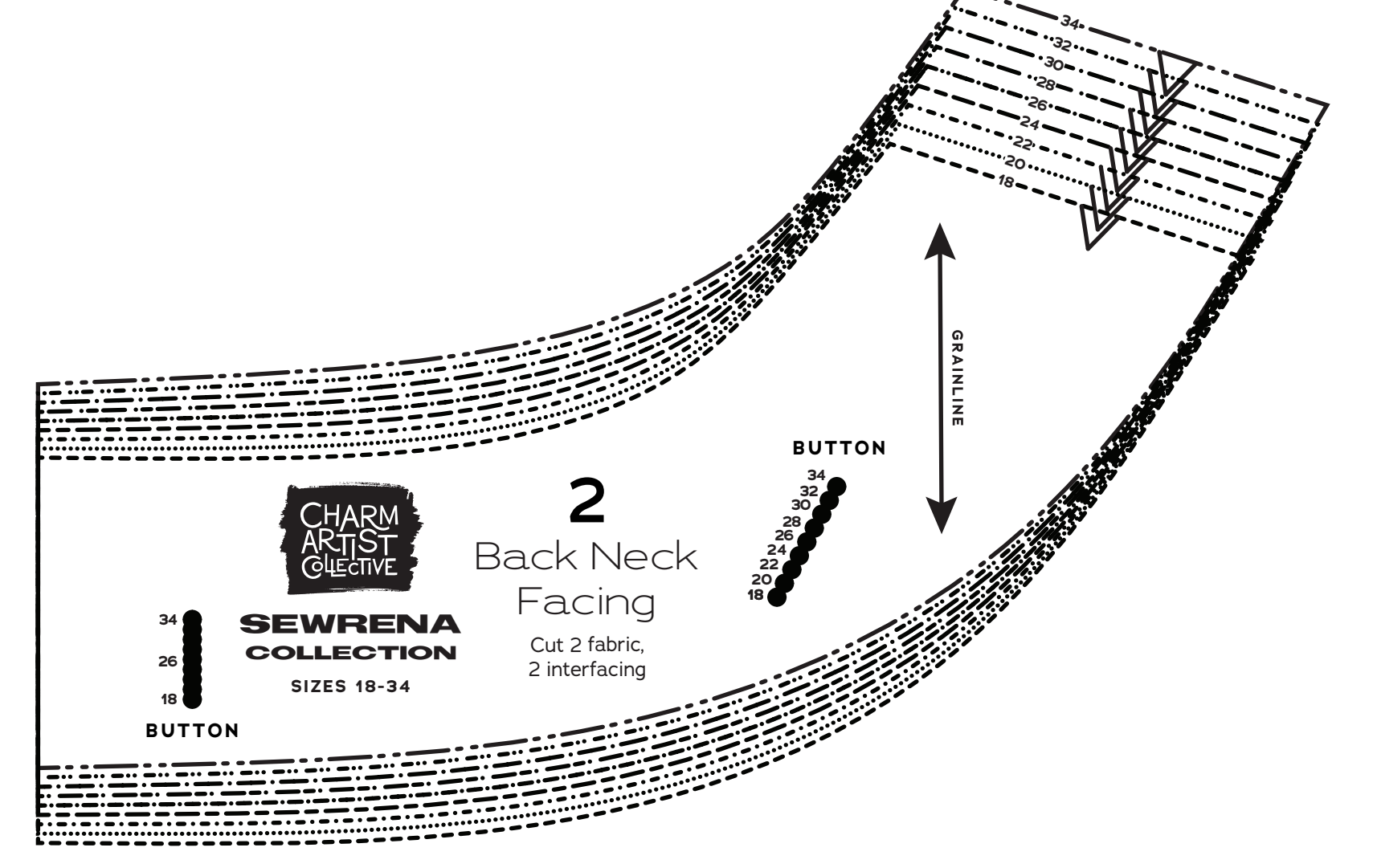
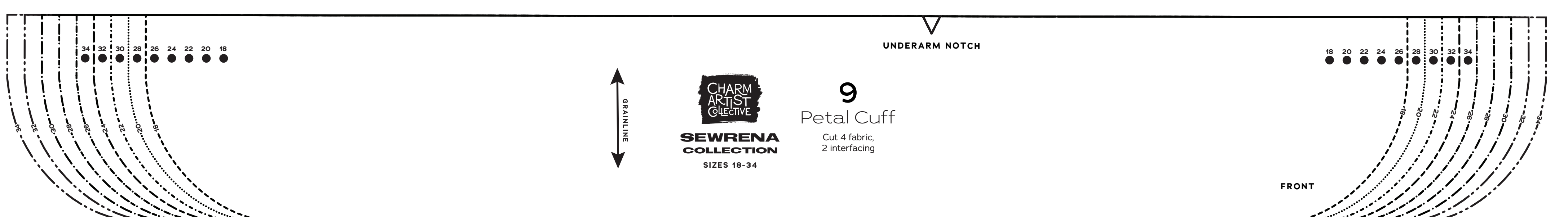
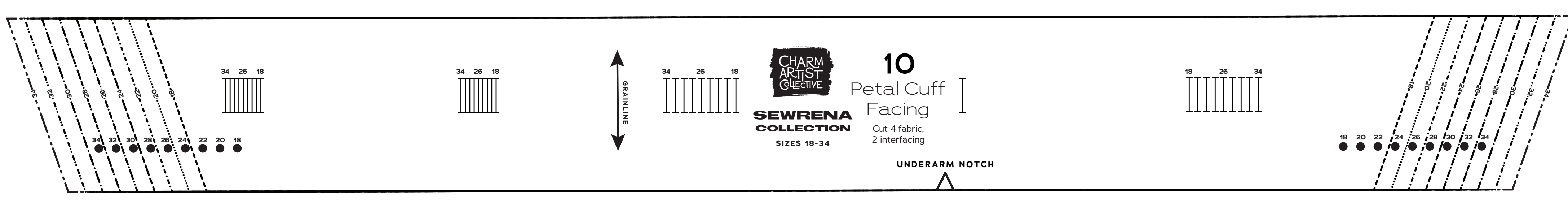
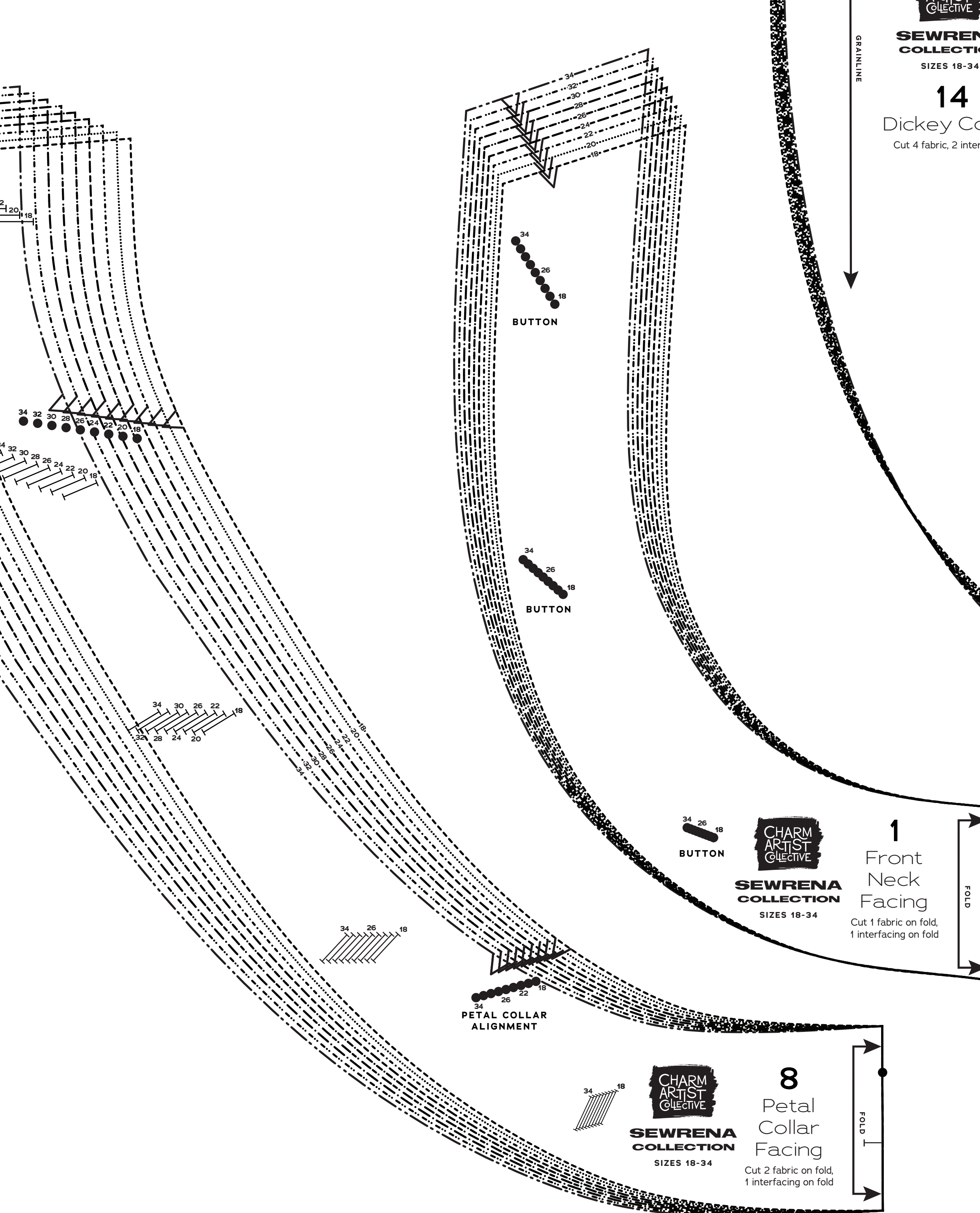
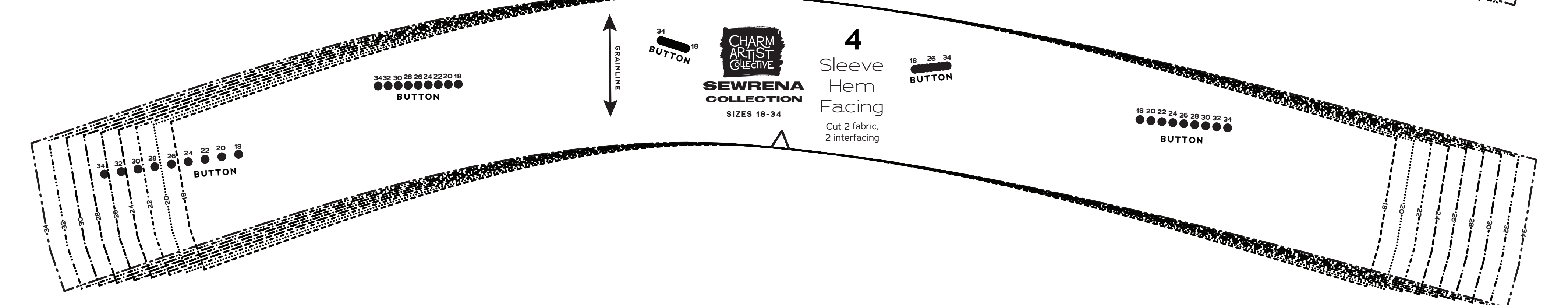
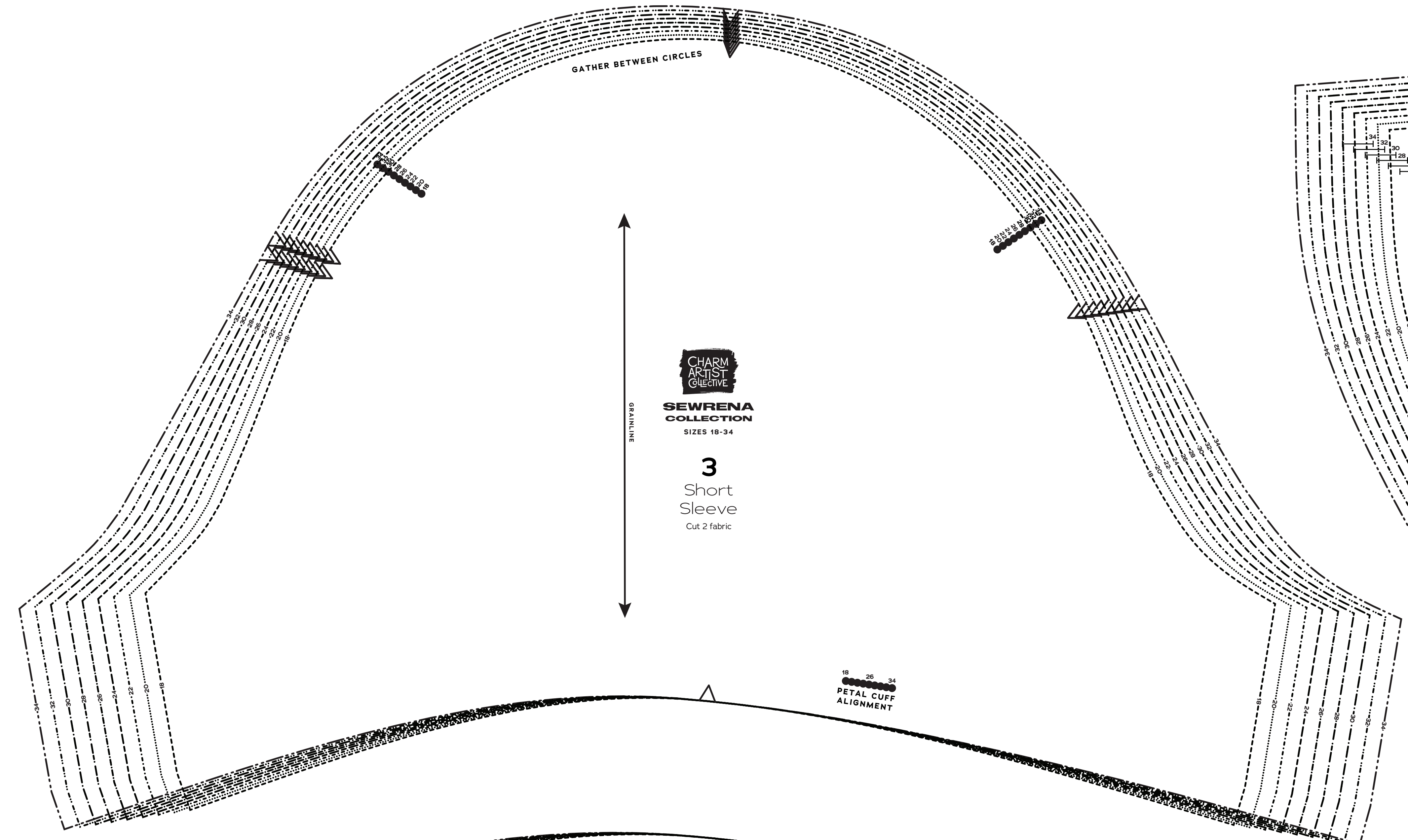
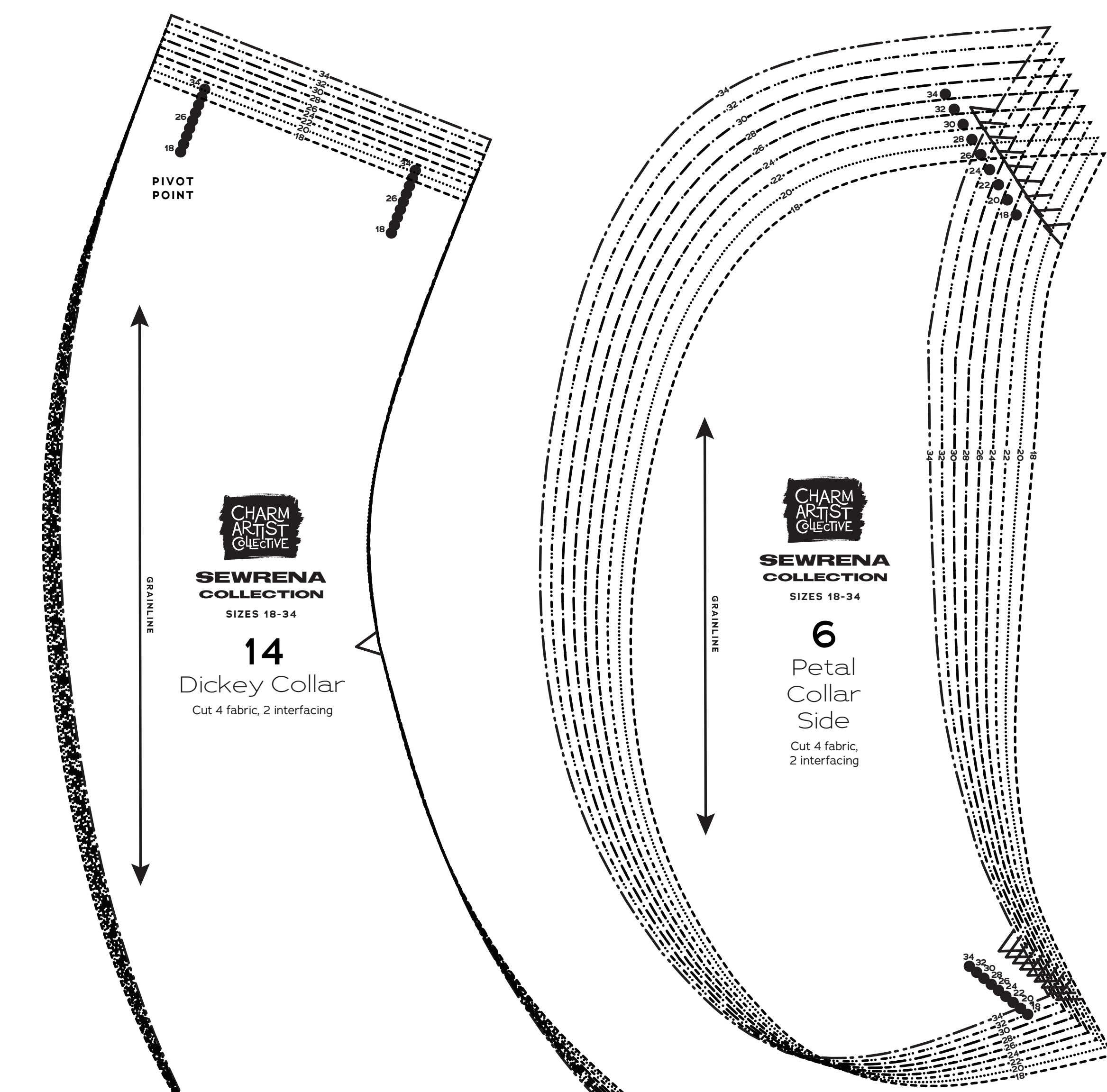
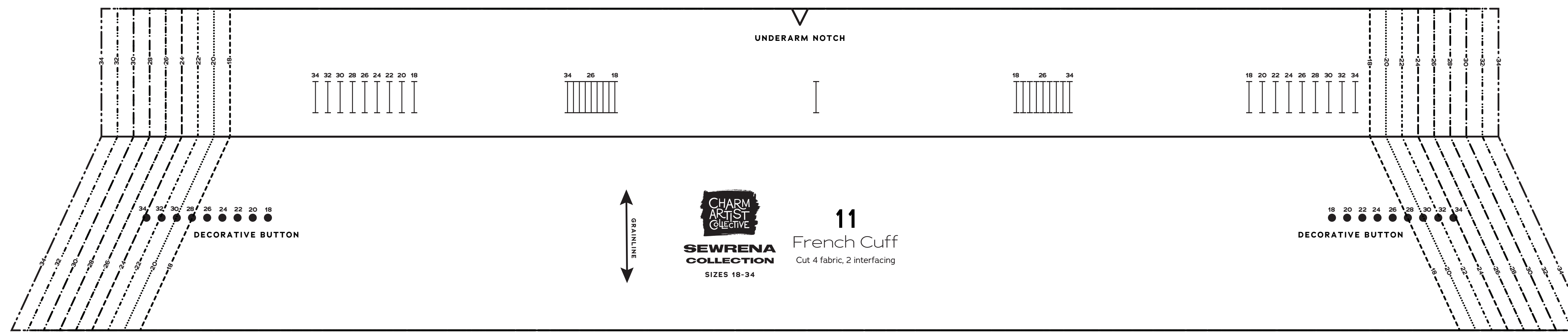
18  
20  
22  
24  
26  
28  
30  
32  
34

**SYMBOL KEY**

- grainline arrow
- match point/ placement mark
- buttonhole

1" test square

© 2022 Charm Patterns, Inc. Service, Distribution and Commercial Use Prohibited.





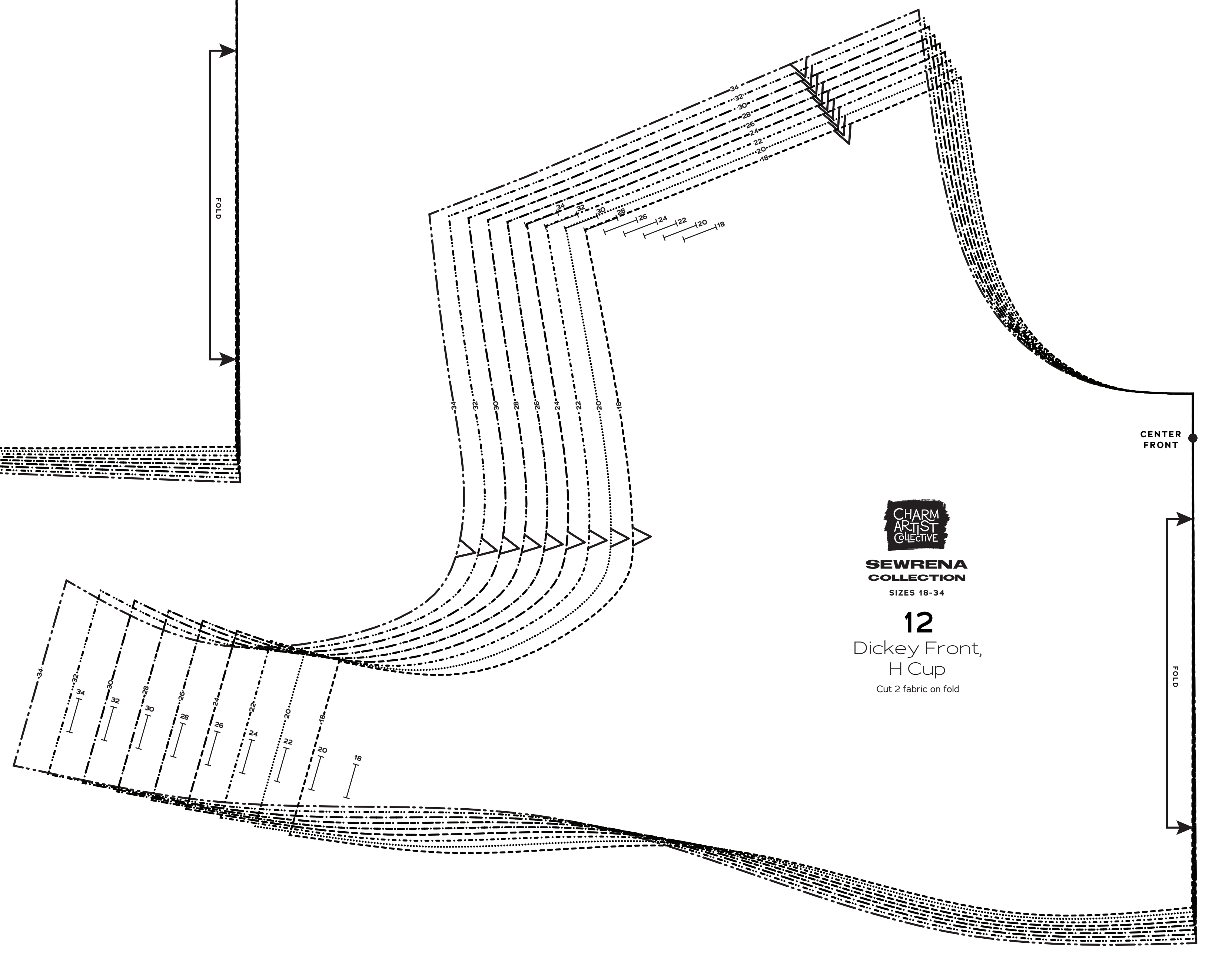
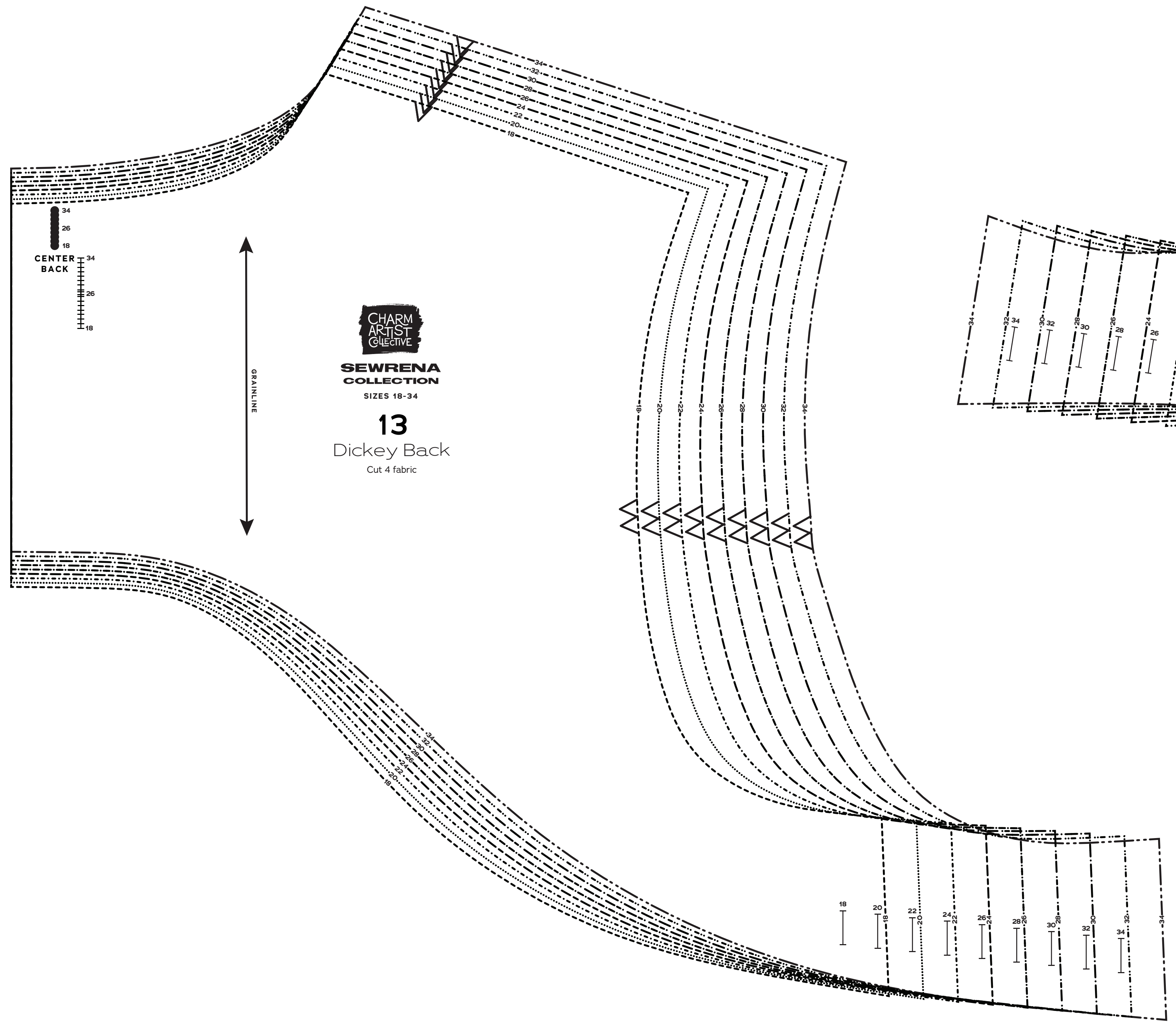
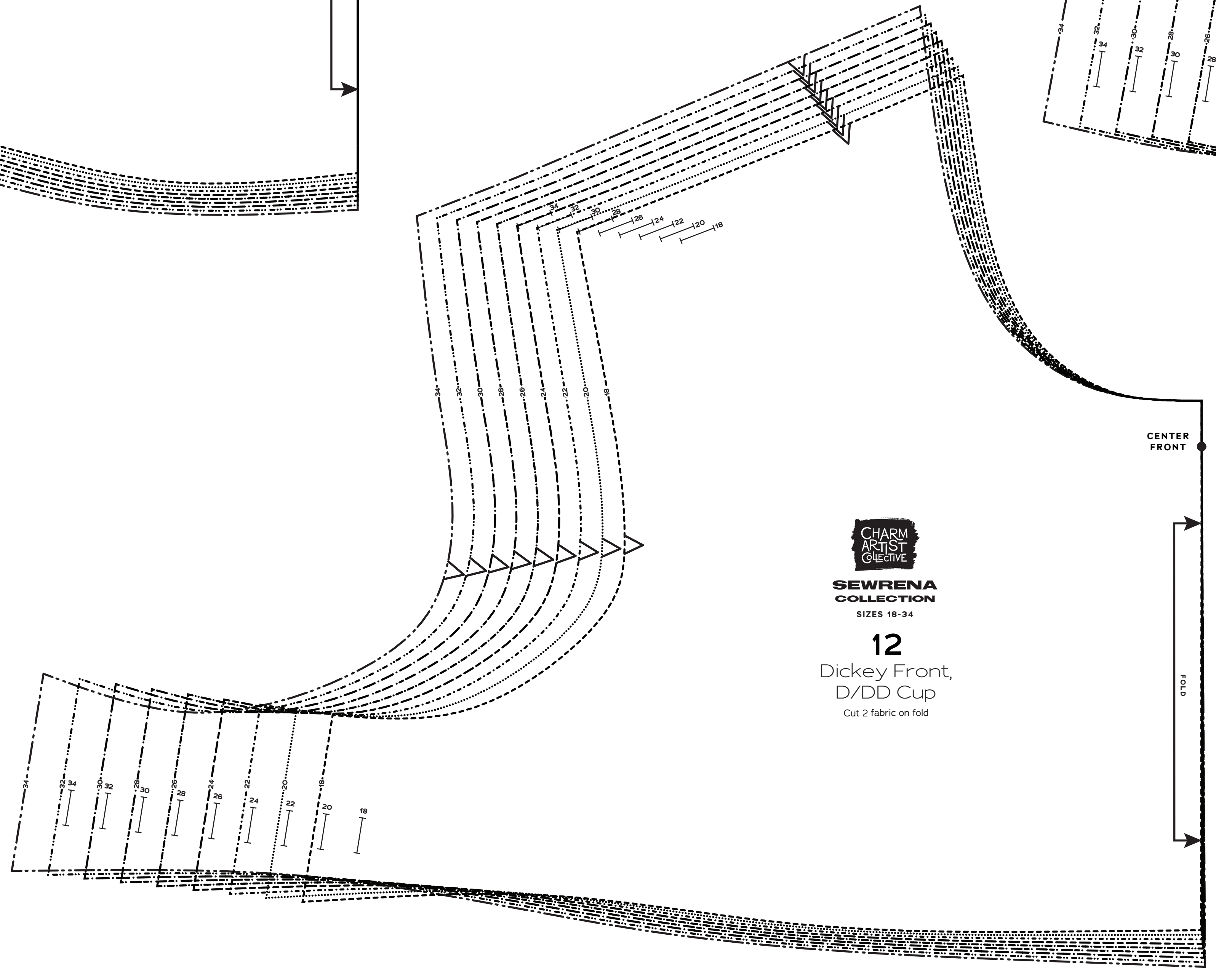
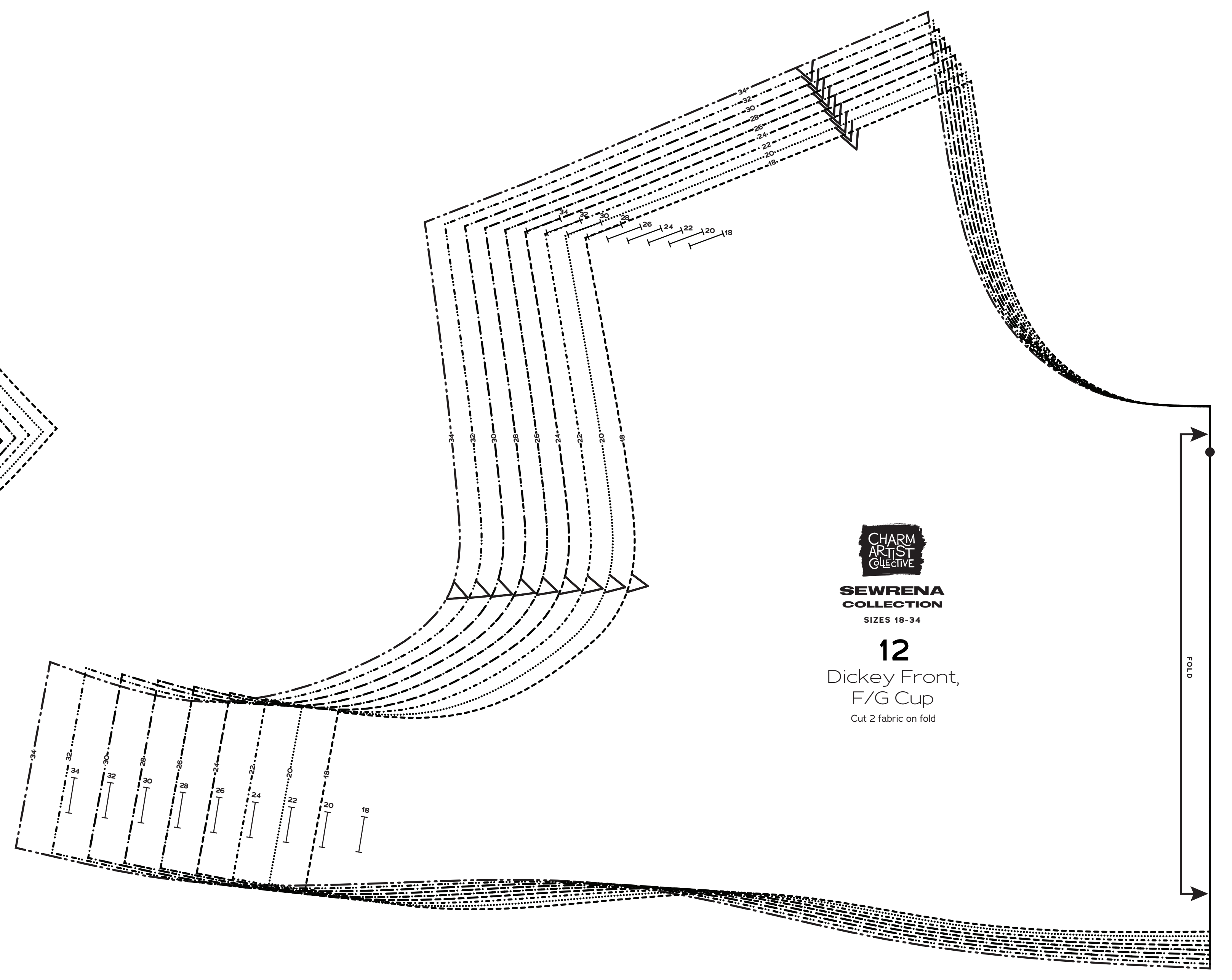
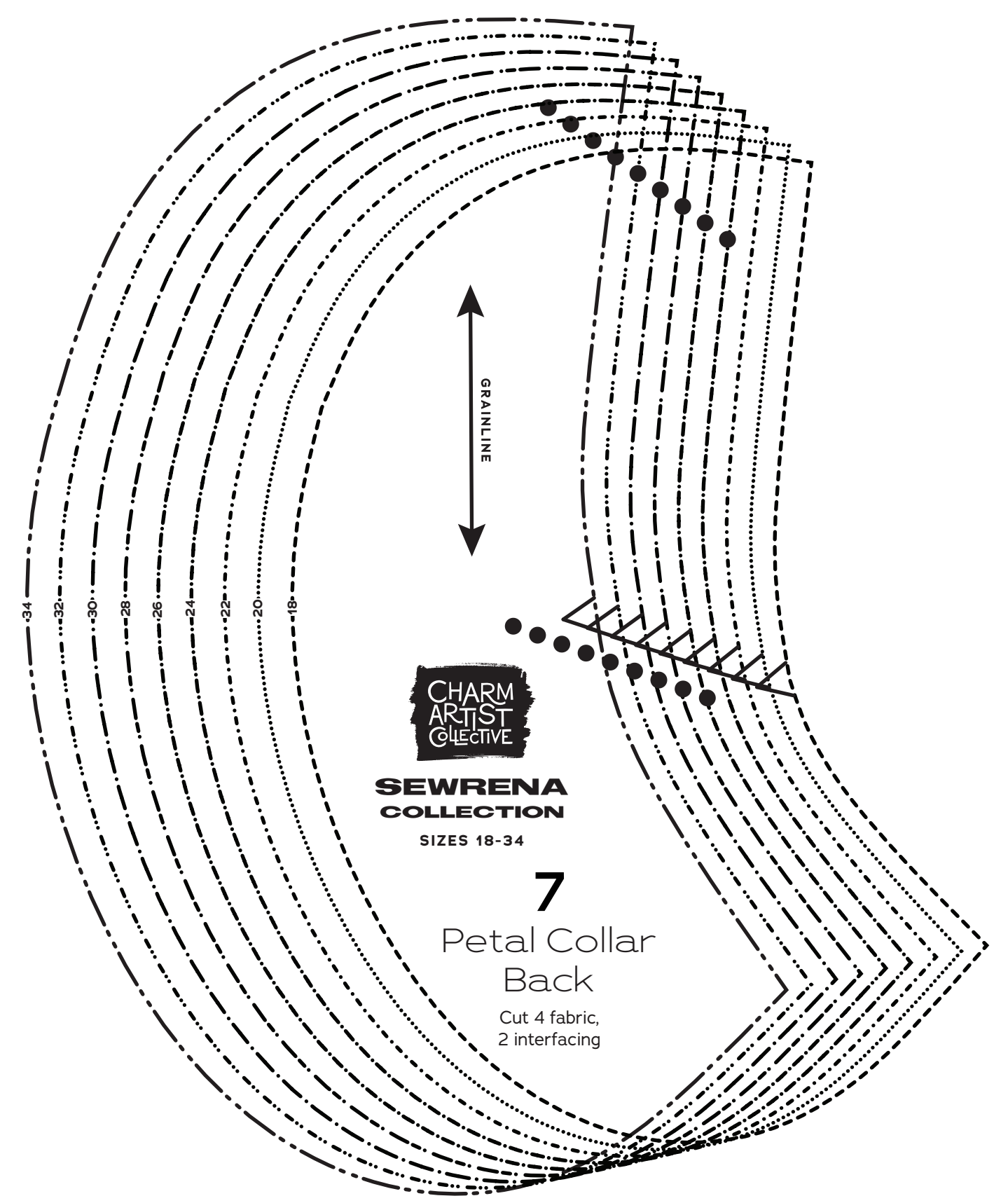
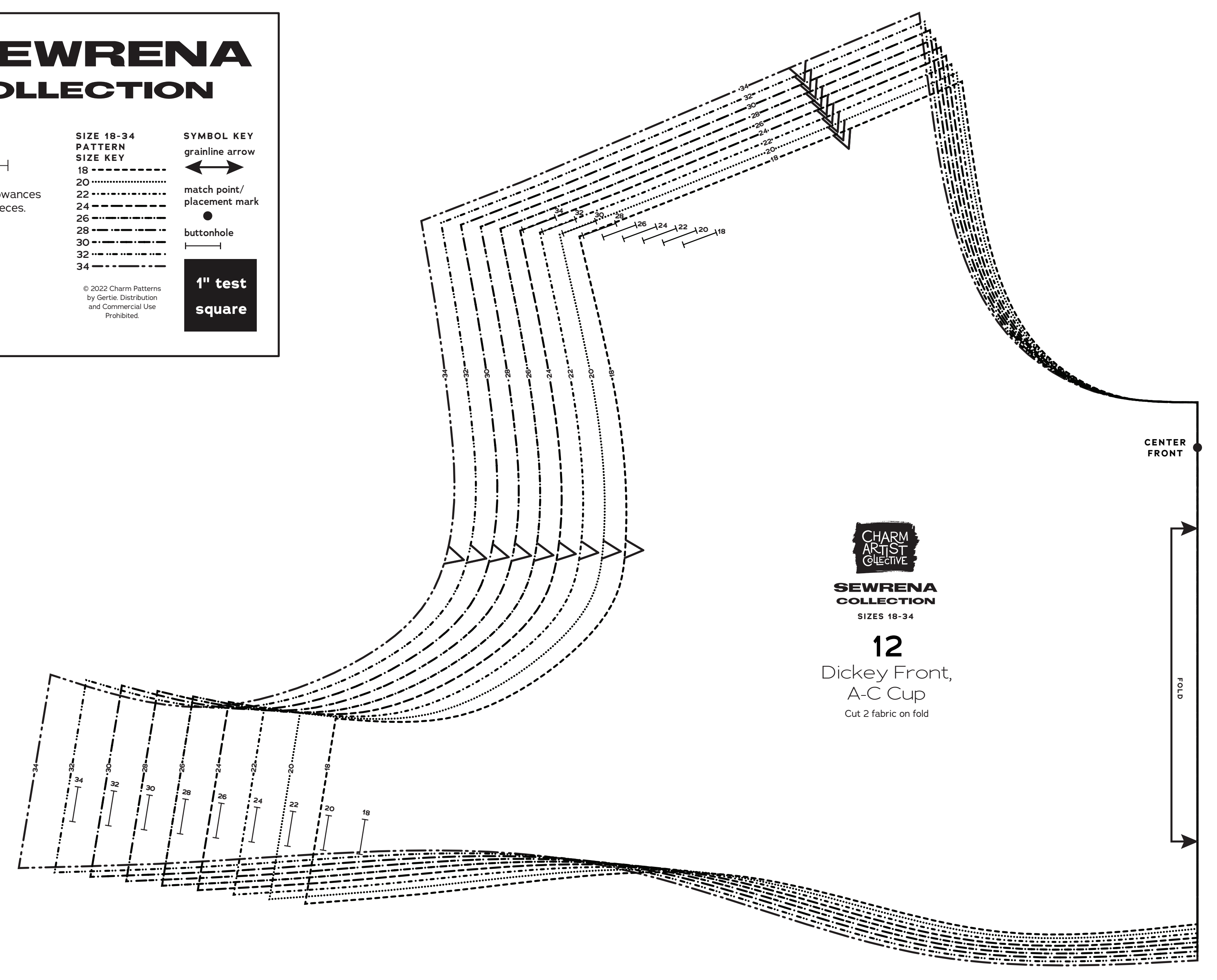
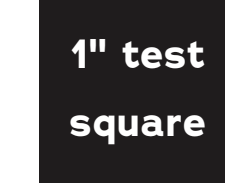
**CHARM ARTIST COLLECTIVE**  
**SEWRENA COLLECTION**

Sizes 18-34  
 with cup sizes A-H  
 5/8 inch (1.5 cm) seam allowances are included on all pattern pieces.

**PAGE 2 OF 3**  
**PATTERN PIECE INDEX**  
 7 Petal Collar Back  
 12 Dickey Front, A-C Cup  
 12 Dickey Front, D/DD Cup  
 12 Dickey Front, F/G Cup  
 12 Dickey Front, H Cup  
 13 Dickey Back

**SIZE 18-34**  
**PATTERN**  
**SIZE KEY**  
 18  
 20  
 22  
 24  
 26  
 28  
 30  
 32  
 34

**SYMBOL KEY**  
 grainline arrow  
 match point/  
 placement mark  
 buttonhole





Sizes 18-234 with cup sizes A-H

5/8 inch (1.5 cm) seam allowances are included on all pattern pieces.

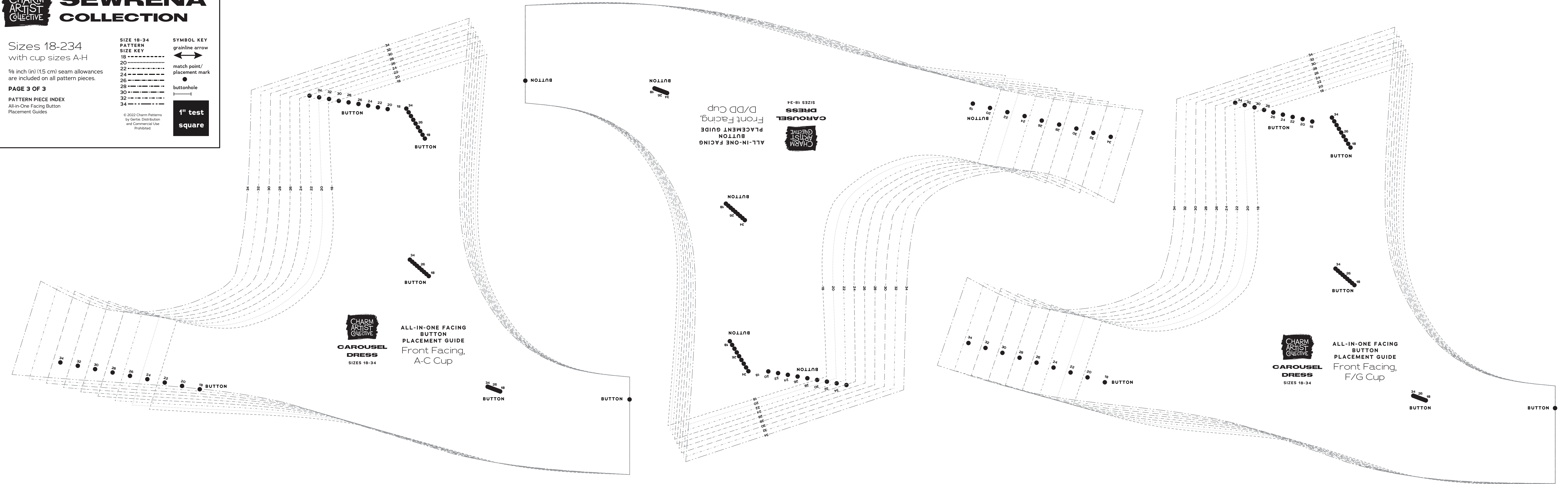
PAGE 3 OF 3

PATTERN PIECE INDEX All-in-One Facing Button Placement Guides

SIZE 18-34 PATTERN SIZE KEY 18 20 22 24 26 28 30 32 34

SYMBOL KEY grainline arrow match point/ placement mark buttonhole

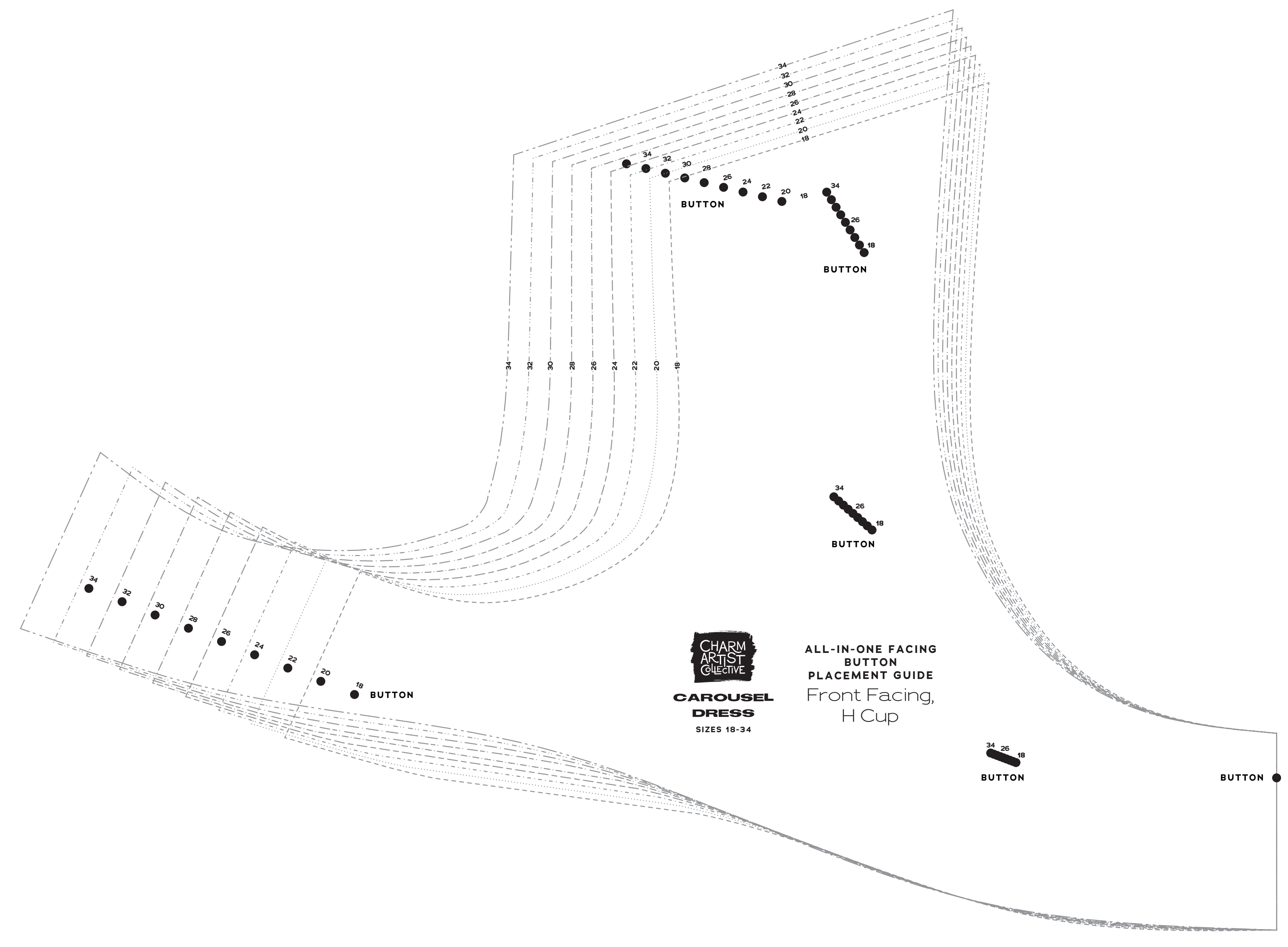
1" test square



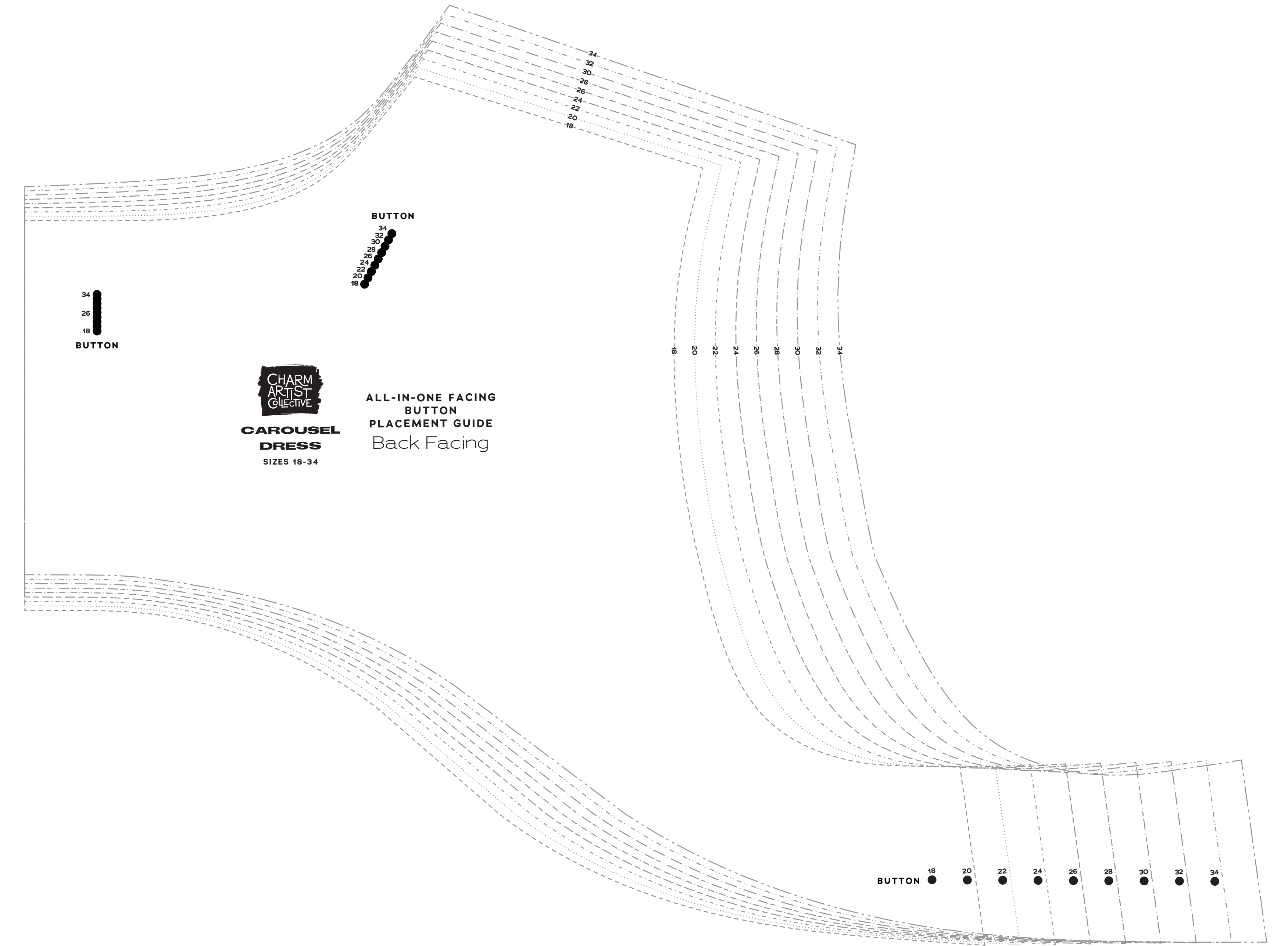
CHARM ARTIST COLLECTIVE CAROUSEL DRESS SIZES 18-34 ALL-IN-ONE FACING BUTTON PLACEMENT GUIDE Front Facing, A-C Cup

CHARM ARTIST COLLECTIVE CAROUSEL DRESS SIZES 18-34 ALL-IN-ONE FACING BUTTON PLACEMENT GUIDE Front Facing, D/DD Cup

CHARM ARTIST COLLECTIVE CAROUSEL DRESS SIZES 18-34 ALL-IN-ONE FACING BUTTON PLACEMENT GUIDE Front Facing, F/G Cup



CHARM ARTIST COLLECTIVE CAROUSEL DRESS SIZES 18-34 ALL-IN-ONE FACING BUTTON PLACEMENT GUIDE Front Facing, H Cup



CHARM ARTIST COLLECTIVE CAROUSEL DRESS SIZES 18-34 ALL-IN-ONE FACING BUTTON PLACEMENT GUIDE Back Facing