



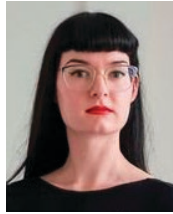
JEANNE GLOVES

A PATREON EXCLUSIVE PATTERN

© 2022 Charm Patterns by Gertie



Designing these gloves for the Charm Artist Collective has been such a delight! While sewing gloves can be challenging, I've created this pattern to be approachable for first-time glove makers. The included design options will take your skills to the next level. Make them in a knit jersey or velvet for warm winter wear, or try a sheer mesh for the most delicate of feminine accessories.



Love, Jeanne

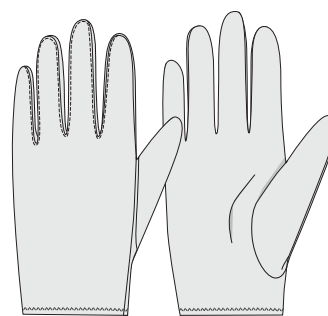
ABOUT THE GUEST ARTIST

Jeanne Hermans creates glamour and luxury through C'est Jeanne, a custom glove atelier based in The Netherlands. Learn more about Jeanne at www.cestjeanne.com.

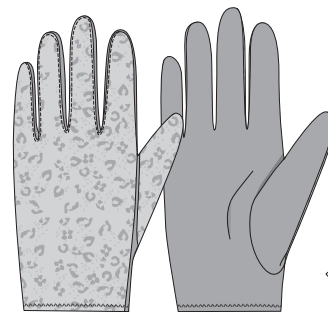


I'm excited to share the Jeanne Gloves with you! They are a fun and challenging project that will test your sewing skills. Be sure to watch the tutorial video before you begin and don't forget to share your finished gloves using #jeannegloves. I can't wait to see what you create!

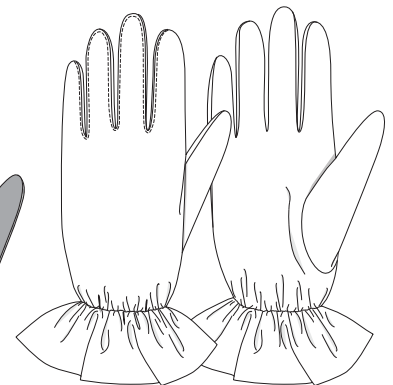
xoxo, *Gertie*



plain



two-toned



ruffled

KEY SKILLS

- Precision cutting and sewing
- Using tissue paper to stabilize fabric
- Sewing with a tiny seam allowance

SIZING AND FIT NOTES

The Jeanne Gloves are available in five sizes (XS, S, M, L, and XL), based on your palm measurement, and include four length options for your fingers. The pattern is designed with 3/16 inch (in) (0.5 cm) negative ease to fit snugly around your fingers. Gloves require precise measurements and cutting, so consult the Finished Measurements Chart and measure your dominant hand and fingers carefully when choosing a size. For fabrics with less than 50–75% stretch such as tulle, consider going up one pattern size.

CHOOSING YOUR SIZE

Palm circumference

Measure around your palm just below your fingers, excluding your thumb. Be sure to measure your dominant hand, as this might be slightly larger. For example, if your palm circumference is 6.7 in (17 cm), choose a size Small. If you are in between sizes, go up a size.

XS	6.3 in 16 cm
S	6.7 in 17 cm
M	7 in 18 cm
L	7.4 in 19 cm
XL	7.9 in 20 cm

Finger length

Measure your middle finger between your pointer finger and middle finger. Clamp the measuring tape between your fingers and squeeze gently to hold the tape in place, making sure to measure all the way from the base of your fingers to the tip of your middle fingernail. For example, if your finger length (including fingernail) measures 3.3 in (8.4 cm), choose finger length Size 3.

Size 1	2.9 in 7.4 cm
Size 2	3.1 in 7.9 cm
Size 3	3.3 in 8.4 cm
Size 4	3.5 in 8.9 cm

CUTTING LAYOUTS

PATTERN PIECES

1. Finger Gussets AB, CD, and EF

Cut 2 fabric (for all but two-toned gloves)
Cut 2 bottom fabric (for two-toned gloves)

2. Thumb (for all but two-toned gloves)

Cut 2 fabric on fold

3. Thumb (for two-toned gloves only)

Cut 2 top fabric, cut 2 bottom fabric

4. Glove (for all but two-toned gloves)

Cut 2 fabric

5. Two-Toned Glove Top

Cut 2 top fabric

6. Two-Toned Glove Bottom

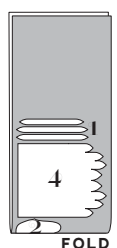
Cut 2 bottom fabric

7. Ruffle (for ruffled gloves only)

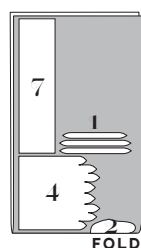
Cut 2 fabric

NOTE: If your fabric has a nap, align it so that it goes down the thumb and the hand.

Plain (1, 2, 4)

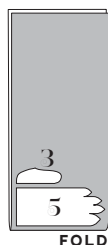


Ruffled (1, 2, 4, 7)

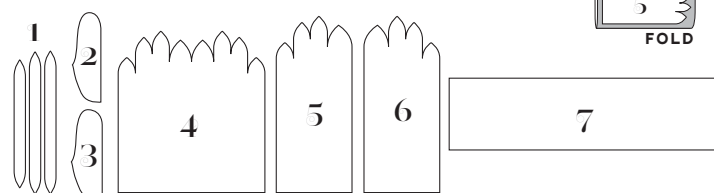


Two-Toned (1, 3, 5, 6)*

Top fabric



Bottom fabric



*For the two-toned gloves, pieces 3, 5, and 6 must be cut with fabric folded so the gloves mirror each other.

MATERIALS & NOTIONS

- Roughly 1/2 yard of fabric
- Thread to match your fabric
- Rotary cutter and cutting mat
- Small pair of scissors
- Ruler
- Pointed tweezers
- Tissue paper
- Silk pins
- Jersey/stretch sewing needle
- 1/2 yard 1/8-in elastic (for Ruffle Gloves)

FABRIC NOTES

This pattern was designed for stretch knits only, such as spandex/Lycra, stretch lace, jersey, stretch mesh, stretch velvet, or stretch tulle. Look for knits with 50% to 75% stretch. It is not recommended to use a woven fabric with this pattern.

For your first time making gloves, we strongly suggest you use a thicker spandex or jersey. The pattern pieces will be easier to handle in sturdy fabrics.

RESOURCES

Here are some of the fabrics used for the samples. There are lots of places to purchase fabric, so this is solely a guide you can use as a reference:

[Stretch tulle](#)

[Leopard stretch velvet](#)

[Black cotton spandex jersey](#)

SEWING INSTRUCTIONS

CUTTING INSTRUCTIONS

- Because gloves are so small and fit so closely to the hand, it is important to cut your fabric carefully.
- Before cutting fabric, measure your printed test square. It should measure exactly 1 in by 1 in. Anything larger or smaller will dramatically change the size of the gloves.
- Use a rotary cutter to cut the fabric, and small sharp scissors to cut the fine details.
- The stretch of the fabric goes around the hand, not from finger to wrist, on all pieces.
- For the finger gussets, use a ruler to cut out 6 strips, each $\frac{5}{8}$ in (1.5 cm) wide. Pin and cut each finger gusset pattern piece individually. Do not remove pins until you are ready to sew.
- If your wrist is significantly smaller than your palm, you may want to take the glove in slightly at the wrist when cutting your fabric.

NOTES

- All pattern pieces include $\frac{1}{8}$ in (3 mm) seam allowances. Be very careful to maintain this seam allowance, as anything larger will result in a glove that is too small for your hand. Tweezers are useful to help hold your seam allowances in place as you sew.
- Use a straight stitch, with a stitch length of just under 2 mm, and a new stretch or jersey needle.
- Pin and sew your fabric to tissue paper, in order to prevent the seam allowance being eaten by your machine.
- Begin sewing with a long thread tail and hold the thread tails when you start sewing so the seam allowance doesn't get pulled into the machine.
- You'll want to make a muslin (or even 2!) in similar fabric to your final gloves in order to practice the techniques used. You may even consider making 2 or more gloves out of the same fabric for each hand, so you can choose the most polished ones as your final pair.
- Before sewing the two-toned gloves, lay out the pieces for each glove separately, so you don't accidentally sew the left thumb onto the right-hand glove!
- You will be rewarded by slow and patient sewing, going only a handful of stitches at a time. Carefully

measure, cut, and pin before sewing, and watch the accompanying tutorial video for a more detailed view of the process.

- Play around with trims! We used a narrow picot-edge elastic on our sheer black pair for a different look.

BEFORE SEWING

Transferring marks: using a small and sharp pair of scissors, make a tiny snip into the seam allowance of each finger gusset where the line marks the point between two fingers. You may also mark this with thread or chalk.

GLOVE PIECES

Start here for all gloves. Instructions are written for the plain gloves, with specific instructions for the two-toned gloves noted where they differ.

Sew the Thumb

1. Sew the thumb: pin the Thumb (2) folded in half, right sides (RS) together. Stitch from the thumb base around the tip, extending and curving your stitches past the seam ending to avoid creating a point. Cut threads, leaving a tail. Turn thumb RS out.

2. Sew the thumb (two-toned gloves only): pin Thumb (3) top to Thumb bottom, RS together. Stitch around the outer edge of the thumb. Cut threads, leaving a tail. Turn thumb RS out.

Insert the Thumb

1. Prepare thumb and thumb hole: fold thumb in half along the seamline, and place a pin at the bottom to mark the base of the thumb. Place two pins at the center of the thumbhole's short ends on Glove (4) or Two-Toned Glove Bottom (6). Place thumb into glove thumbhole, RS together with the thumb tip pointing toward the fingers, and pin on the thumb side. Match the thumb top seam to the thumbhole pin nearest the fingers, and the pin at the base of the thumb to the thumbhole pin nearest the wrist. Baste the thumb to the glove by hand, within the seam allowances. **NOTE:** for the two-toned gloves, the thumb top fabric should be closest to the edge of the glove, and the thumb bottom fabric should be pinned to the palm of the glove.

2. Sew thumb into glove: beginning just before the thumb top seam, stitch the thumb into the thumbhole, using a $\frac{1}{8}$ in (3 mm) seam allowance. (Tip: use tweezers to hold seam allowances in place as it's

easier than fingers for this job). Topstitch, pushing seam allowance toward glove.

Fingers

Begin with the left-hand glove.

1. Prepare Finger Gusset AB (1): pin finger gusset AB to glove top pinkie finger and ring finger, matching A to A and B to B. Pin at the tips of each finger and at the join of the fingers. See the tutorial video for correct pinning technique. **NOTE:** for two-toned gloves, you will pin the finger gussets to Two-Toned Glove Top (5).

2. Sew finger gusset AB: stitch the finger gusset to the glove, starting at the pinkie fingertip and ending $\frac{1}{8}$ in (3 mm) before the end of the ring fingertip. Do not cut the threads—these will be used as a tail to help you hold the seam allowance when you assemble the glove.

3. Sew finger gusset CD: repeat Steps 1 and 2, matching the C and D marks for the middle and ring fingers on the glove top. Begin and end stitching $\frac{1}{8}$ in (3 mm) from the seam allowance at each fingertip, to match previous gusset.

4. Sew finger gusset EF: repeat Steps 1 and 2, matching the E and F marks for the middle and index fingers on the glove top. At the index finger, extend and curve your stitches past the ending seam to avoid creating a point (or end stitching $\frac{1}{8}$ in [3 mm] before the tip of the index finger for two-toned gloves).

Repeat the fingers for the right-hand glove, working the steps backward so you sew finger gusset EF first, followed by CD, and ending with AB.

GLOVE ASSEMBLY

1. Sew index finger (two-toned gloves only): pin the glove top to the glove bottom, RS together, along the index finger. Begin stitching $\frac{1}{8}$ in (3 mm) from the index finger tip at EF finger gusset, and sew to the wrist.

2. Topstitch glove (optional): edgestitch the glove top along the finger gussets, pushing finger gusset seam allowances toward the glove.

3. Prepare the glove: pin the finger gussets of the glove top to the glove bottom, RS together, matching each finger gusset with its marking on the glove

bottom and tucking the thumb inside. Pin the glove top to the glove bottom along the outer pinkie finger seam. Place pins at the fingertips, at the join where each finger meets, and along the side seam.

4. Sew the glove: stitch each finger gusset to the glove bottom, traveling from the wrist to the index finger on the right-hand glove, and from the index finger to the wrist on the left-hand glove. Use the thread tails to steer as you sew each fingertip, flattening the gussets and rounding the tip to become curved, as shown in the tutorial video. Cut threads and trim all seam allowances, then turn gloves RS out.

Choose one finishing method for both gloves.

GLOVE FINISHING

Plain and two-toned gloves

1. Prepare the hem: overlock or zigzag around the wrist. Press the hem $\frac{1}{4}$ in (6 mm) to wrong side (WS).

2. Hem the gloves: sew the hem with a small zigzag stitch or by hand. Press the hem and put on the glove. Use the heat of your hand to straighten and mold the fingers and thumb.

Ruffled gloves

1. Prepare the Ruffle (7): pin the short ends of the ruffle RS together to create a ring. Stitch and press seam allowances open.

2. Gather the ruffle: fold the ruffle in half lengthwise, WS together, and press. Sew one line of gathering stitches $\frac{1}{8}$ in (3 mm) from raw edge and a second line of gathering stitches $\frac{1}{4}$ in (6 mm) from raw edge. Pull up bobbin threads to gather ruffle.

3. Attach ruffle to glove: pin ruffle to glove, RS together, distributing the ruffle evenly around the wrist. Stitch with a small zigzag stitch.

4. Attach elastic at wrist: measure around your wrist and cut elastic to 80% of the circumference. Stitch elastic onto the wrist seam allowance with a small zigzag stitch. Steam the elastic. Put on the glove. Use the heat of your hand to straighten and mold the fingers and thumb.

Enjoy your smart new Jeanne Gloves!

PATTERN PIECE LOCATION GUIDE

Here is a list to help you locate the pattern pieces on the letter-size pattern pdf file included as part of this digital pattern.

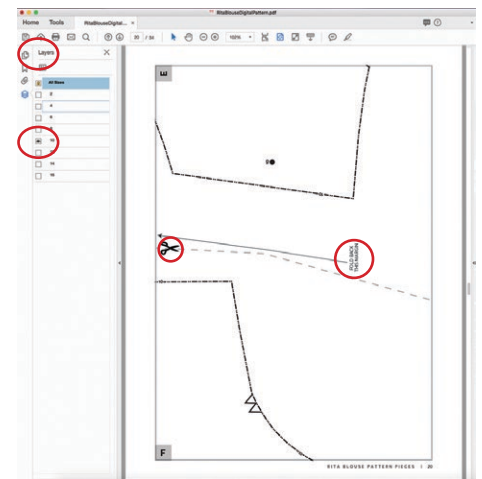
PC#	Piece Name	All sizes	XS	S	M	L	XL
1	Finger Gussets AB, CD, and EF	1					
2	Thumb (for all but two-toned gloves)	1					
3	Thumb (for two-toned gloves only)	1					
4	Glove (for all but two-toned gloves)		2	3	4	5	6
5	Two-Toned Glove Top		7	8	9	10	11
6	Two-Toned Glove Bottom		7	8	9	10	12
7	Ruffle	13					

HOW TO USE THIS PATTERN

The pattern pieces are tiled so you can print them on Letter (8½" x 11") or A4 size paper. This pattern includes size layers for finger length. To get the best results, open the pattern pieces PDF in Acrobat Reader.

Open the Layers Palette (View>Show/Hide>Navigation Panes>Layers) and hide all of the layer(s) except for the ones you want to print by clicking on the eye icon.

The All Sizes layer has general pattern information and will always print.



WORKING WITH THE TILED PIECES

Go to File>Print and change the page range to the pages you need for the pieces you've chosen (see Pattern Pieces Printing Index). Make sure the Page Sizing settings to 100% or Actual Size. Test this after printing by measuring the 1" test box.

Join the Ruffle pattern piece by folding back one of the page margins along the thick black line. Tape the two pages together, butting up the folded page edge with the other thick black line where it says "Join to A."

MORE FROM GERTIE

On Instagram: Stay in the loop and get inspired.

On YouTube: Learn beginner and advanced sewing skills and techniques through my tutorials, watch episodes of my Gertie's World series, and join regular live streams.

On Patreon: Access monthly patterns and tutorial videos.

At CharmPatterns.com: Shop my sewing patterns and accessories.

