

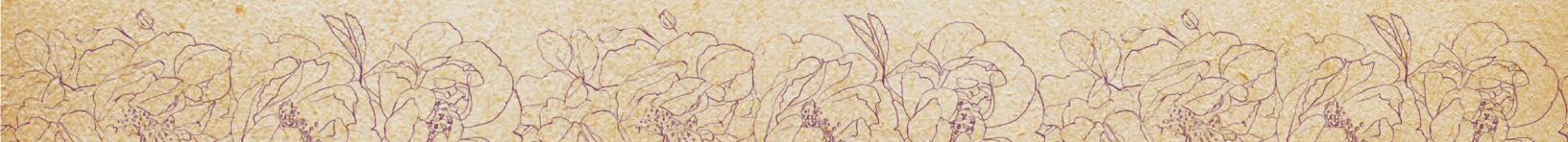


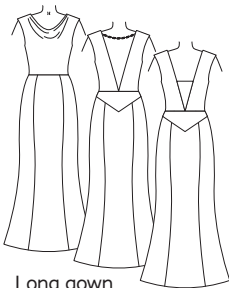
Starlet

GOWN

A PATREON
EXCLUSIVE
PATTERN

© 2023 Charm
Patterns by Gertie

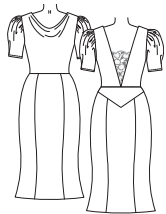




Long gown



Short dress with Society Dress skirt and bishop sleeves



Short dress with Society Dress short sleeves

Series

- Interchangeable with the Society Dress

Key Details

- Optional open deep-V back
- Long skirt with back yoke
- Cowl neckline

The final pattern for the secret and glamorous Society of Charm is here! We're delighted to wrap up this year with a companion gown for our popular Society Dress.

The Starlet Gown is a 1930s-inspired fitted knit dress in two lengths. It features an elegant cowl neckline and deep-V open back (with optional modesty panel), and it is fully interchangeable with the Society Dress—so you can mix-and-match the bodice, skirts, and sleeves between the two dresses to create your own perfect sophisticated (and comfy!) gown.

xoxo, Gertie

SIZE CHART

The Starlet Gown is sized in women's US 2–20 and 18–34, A–H cup sizes. Please use the chart below to pick your size. The High Bust measurement should be taken above your breasts and the Full Bust measurement should be taken at the fullest part of your bustline. Take the Waist measurement at the smallest part of your torso and the Hip measurement at the widest part of your hips. Note that it is best to choose your size by your bust measurements (and add or remove from the side seams at the waist if needed).

Not sure which size range to choose? Read more about our [two size ranges here!](#)

SIZES 2-20	2	4	6	8	10	12	14	16	18	20
High Bust	29 in 73.7 cm	31 in 78.7 cm	33 in 83.8 cm	35 in 88.9 cm	37 in 94 cm	39 in 99 cm	41 in 104.1 cm	43 in 109.2 cm	45 in 114.3 cm	47 in 119.4 cm
Bust A cup	30.5 in 77.5 cm	32.5 in 82.5 cm	34.5 in 87.6 cm	36.5 in 92.7 cm	38.5 in 97.8 cm	40.5 in 102.9 cm	42.5 in 108 cm	44.5 in 113 cm	46.5 in 118.1 cm	48.5 in 123.2 cm
Bust B/C cup	31 in 78.7 cm	33 in 83.8 cm	35 in 88.9 cm	37 in 94 cm	39 in 99 cm	41 in 104.1 cm	43 in 109.2 cm	45 in 114.3 cm	47 in 119.4 cm	49 in 124.5 cm
Bust D/DD cup	32 in 81.3 cm	34 in 86.4 cm	36 in 91.4 cm	38 in 96.5 cm	40 in 101.6 cm	42 in 106.7 cm	44 in 111.8 cm	46 in 116.8 cm	48 in 121.9 cm	50 in 127 cm
Bust F/G cup	33 in 83.8 cm	35 in 88.9 cm	37 in 94 cm	39 in 99 cm	41 in 104.1 cm	43 in 109.2 cm	45 in 114.3 cm	47 in 119.4 cm	49 in 124.5 cm	51 in 129.5 cm
Bust H cup	34 in 86.4 cm	36 in 91.4 cm	38 in 96.5 cm	40 in 101.6 cm	42 in 106.7 cm	44 in 111.8 cm	46 in 116.8 cm	48 in 121.9 cm	50 in 127 cm	52 in 132.1 cm
Waist	24 in 61 cm	26 in 66 cm	28 in 71.1 cm	30 in 76.2 cm	32 in 81.3 cm	34 in 86.4 cm	36 in 91.4 cm	38 in 96.5 cm	40 in 101.6 cm	42 in 106.7 cm
Hips	36 in 91.4 cm	38 in 96.5 cm	40 in 101.6 cm	42 in 106.7 cm	44 in 111.8 cm	46 in 116.8 cm	48 in 121.9 cm	50 in 127 cm	52 in 132.1 cm	54 in 137.2 cm

SIZES 18-34	18	20	22	24	26	28	30	32	34
High Bust	39.5 in 100.3 cm	41.5 in 105.4 cm	43.5 in 110.5 cm	45.5 in 115.6 cm	47.5 in 120.7 cm	49.5 in 125.7 cm	51.5 in 130.8 cm	53.5 in 135.9 cm	55.5 in 141 cm
Bust A/B cup	42.5 in 108 cm	44.5 in 113 cm	46.5 in 118.1 cm	48.5 in 123.2 cm	50.5 in 128.3 cm	52.5 in 133.4 cm	54.5 in 138.4 cm	56.5 in 143.5 cm	58.5 in 148.6 cm
Bust C cup	43 in 109.2 cm	45 in 114.3 cm	47 in 119.4 cm	49 in 124.5 cm	51 in 129.5 cm	53 in 134.6 cm	55 in 139.7 cm	57 in 144.8 cm	59 in 149.9 cm
Bust D/DD cup	44 in 111.8 cm	46 in 116.8 cm	48 in 121.9 cm	50 in 127 cm	52 in 132.1 cm	54 in 137.2 cm	56 in 142.2 cm	58 in 147.3 cm	60 in 152.4 cm
Bust F/G cup	45 in 114.3 cm	47 in 119.4 cm	49 in 124.5 cm	51 in 129.5 cm	53 in 134.6 cm	55 in 139.7 cm	57 in 144.8 cm	59 in 149.9 cm	61 in 154.9 cm
Bust H cup	46 in 116.8 cm	48 in 121.9 cm	50 in 127 cm	52 in 132.1 cm	54 in 137.2 cm	56 in 142.2 cm	58 in 147.3 cm	60 in 152.4 cm	62 in 157.5 cm
Waist	40 in 101.6 cm	42 in 106.7 cm	44 in 111.8 cm	46 in 116.8 cm	48 in 121.9 cm	50 in 127 cm	52 in 132.1 cm	54 in 137.2 cm	56 in 142.2 cm
Hips	48 in 121.9 cm	50 in 127 cm	52 in 132.1 cm	54 in 137.2 cm	56 in 142.2 cm	58 in 147.3 cm	60 in 152.4 cm	62 in 157.5 cm	64 in 162.6 cm

Resources

Here are some of the fabrics I used for the samples and in the video tutorial.

There are lots of places to purchase fabric, so this is solely a guide you can use as a reference:

[Stretch Velvet](#)

[Rayon Matte Jersey](#)

Fabric Notes

We recommend light- to medium-weight stretch knits with 50–70% stretch in the widthwise direction and zero to very little stretch in the lengthwise grain. Spandex blends like stretch velvet, stretch sequins, lurex, and jersey work well. Woven fabrics are not recommended for this design.

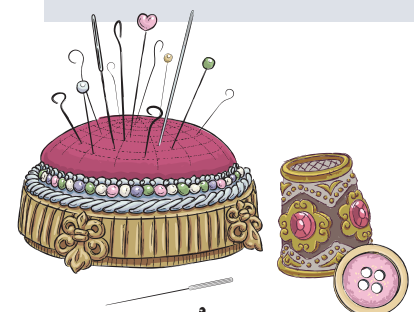
If you find a fabric that stretches only in the lengthwise direction, you will need to modify the cutting layouts and orient the pattern pieces so that the stretch goes horizontally around the body.

You may use a fabric with more or less stretch, but you may need to adjust the fit of the pattern (stretchier fabrics will result in a looser fit and vice versa).

Your lining fabric should have the same stretch percentage as your dress fabric.

Materials & Notions

- Fabric for the dress
- Contrast fabric for the back inset (optional)
- Lining fabric
- Thread to match
- A small coin or stainless steel washer to weigh down the cowl
- Ribbon, rhinestone trim, or decorative chain (for a dress with an open back)



FIT NOTES

The Starlet Gown is a figure-skimming knit gown with a cowl neckline. It is designed to be made in stretch knit fabric with negative ease throughout the waist (meaning the garment measurements are smaller than the intended body measurements because the dress will stretch to fit your body) and positive ease at the bust and hip.

The pattern is designed to fit with between 0 to 2½ inches (in) (0 to 6.4 cm) of positive ease in the bust, 2 to 2¼ in (5 to 5.7 cm) of negative ease at the waist, and 1 in (2.5 cm) of positive ease in the hips. See the charts for finished garment measurements.

Finished Measurements

Sizes 2-20	2	4	6	8	10	12	14	16	18	20
Bust A-C	33 in 83.8 cm	35 in 88.9 cm	37 in 94 cm	39 in 99.1 cm	41 in 104.1 cm	43 in 109.2 cm	45 in 114.3 cm	47 in 119.4 cm	49 in 124.5 cm	51 in 129.5 cm
Bust D-G	34 in 86.4 cm	36 in 91.4 cm	38 in 96.5 cm	40 in 101.6 cm	42 in 106.7 cm	44 in 111.8 cm	46 in 116.8 cm	48 in 121.9 cm	50 in 127 cm	52 in 132.1 cm
Bust H	35 in 88.9 cm	37 in 94 cm	39 in 99.1 cm	41 in 104.1 cm	43 in 109.2 cm	45 in 114.3 cm	47 in 119.4 cm	49 in 124.5 cm	51 in 129.5 cm	53 in 134.6 cm
Waist	21.75 in 55.2 cm	23.75 in 60.3 cm	25.75 in 65.4 cm	27.75 in 70.5 cm	29.75 in 75.6 cm	31.75 in 80.6 cm	33.75 in 85.7 cm	35.75 in 90.8 cm	37.75 in 95.9 cm	39.75 in 101 cm
Hips	37 in 94 cm	39 in 99.1 cm	41 in 104.1 cm	43 in 109.2 cm	45 in 114.3 cm	47 in 119.4 cm	49 in 124.5 cm	51 in 129.5 cm	53 in 134.6 cm	55 in 139.7 cm
CB Skirt Length, Gown	44 in 111.8 cm	44 in 111.8 cm	44 in 111.8 cm	44 in 111.8 cm	44 in 111.8 cm	44 in 111.8 cm	44 in 111.8 cm	44 in 111.8 cm	44 in 111.8 cm	44 in 111.8 cm
CB Skirt Length, Dress	28 in 71.1 cm	28 in 71.1 cm	28 in 71.1 cm	28 in 71.1 cm	28 in 71.1 cm	28 in 71.1 cm	28 in 71.1 cm	28 in 71.1 cm	28 in 71.1 cm	28 in 71.1 cm

Sizes 18-34	18	20	22	24	26	28	30	32	34
Bust A-C	44 in 111.8 cm	46 in 116.8 cm	48 in 121.9 cm	50 in 127 cm	52 in 132.1 cm	54 in 137.2 cm	56 in 142.2 cm	58 in 147.3 cm	60 in 152.4 cm
Bust D-G	45 in 114.3 cm	47 in 119.4 cm	49 in 124.5 cm	51 in 129.5 cm	53 in 134.6 cm	55 in 139.7 cm	57 in 144.8 cm	59 in 149.9 cm	61 in 154.9 cm
Bust H	46 in 116.8 cm	48 in 121.9 cm	50 in 127 cm	52 in 132.1 cm	54 in 137.2 cm	56 in 142.2 cm	58 in 147.3 cm	60 in 152.4 cm	62 in 157.5 cm
Waist	38 in 96.5 cm	40 in 101.6 cm	42 in 106.7 cm	44 in 111.8 cm	46 in 116.8 cm	48 in 121.9 cm	50 in 127 cm	52 in 132.1 cm	54 in 137.2 cm
Hips	49 in 124.5 cm	51 in 129.5 cm	53 in 134.6 cm	55 in 139.7 cm	57 in 144.8 cm	59 in 149.9 cm	61 in 154.9 cm	63 in 160 cm	65 in 165.1 cm
CB Skirt Length, Gown	44 in 111.8 cm	44 in 111.8 cm	44 in 111.8 cm	44 in 111.8 cm	44 in 111.8 cm	44 in 111.8 cm	44 in 111.8 cm	44 in 111.8 cm	44 in 111.8 cm
CB Skirt Length, Dress	28 in 71.1 cm	28 in 71.1 cm	28 in 71.1 cm	28 in 71.1 cm	28 in 71.1 cm	28 in 71.1 cm	28 in 71.1 cm	28 in 71.1 cm	28 in 71.1 cm

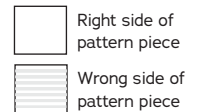
Pattern Pieces

- Bodice Front**
Cut 1 fabric on fold, 1 lining on fold
- Bodice Back**
Cut 2 fabric, 2 lining
- Bodice Back Inset**
Cut 1 contrast fabric, 1 lining
- Skirt Front**
Cut 1 fabric on fold
- Skirt Side Front**
Cut 2 fabric
- Skirt Back**
Cut 1 fabric on fold
- Skirt Back Yoke**
Cut 1 fabric on fold
- Skirt Side Back**
Cut 2 fabric

REQUIRED YARDAGE & CUTTING LAYOUTS

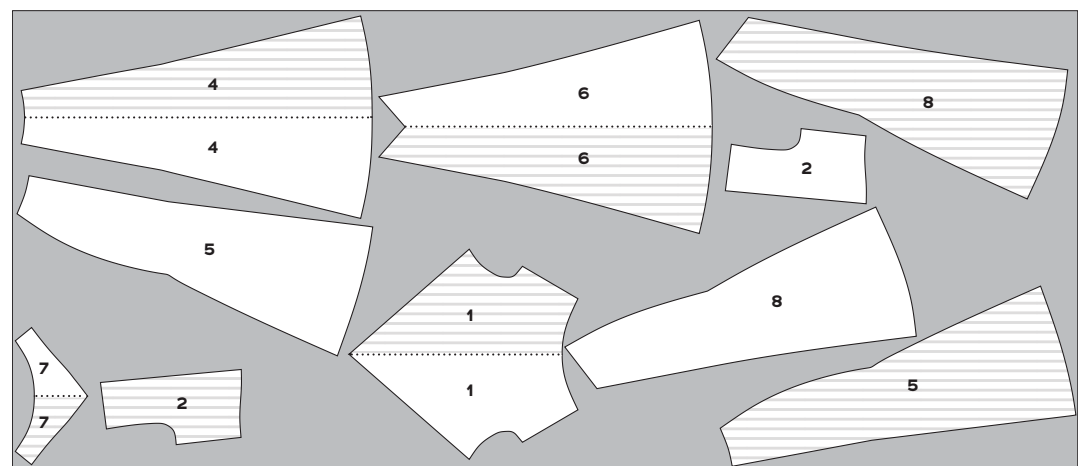
NOTE: The pattern pieces in the Fabric layouts are shown in a “with nap” layout to account for the pile of velvet. You may need additional yardage for directional prints, stripes, plaids, and other prints that need to be matched across seamlines.

KEY TO LAYOUTS



Be sure to note whether the pieces are cut on a double or single layer of fabric. For a double layer, there will be a note indicating FOLD on the layout.

Long Gown, Fabric	60 in	Sizes 2-10	Sizes 12-20	Sizes 18-24	Sizes 26-34
		(1, 2, 4, 5, 6, 7, 8)	4 yds 3.7 m	4½ yds 3.8 m	4⅞ yds 3.8 m



60 in, all sizes

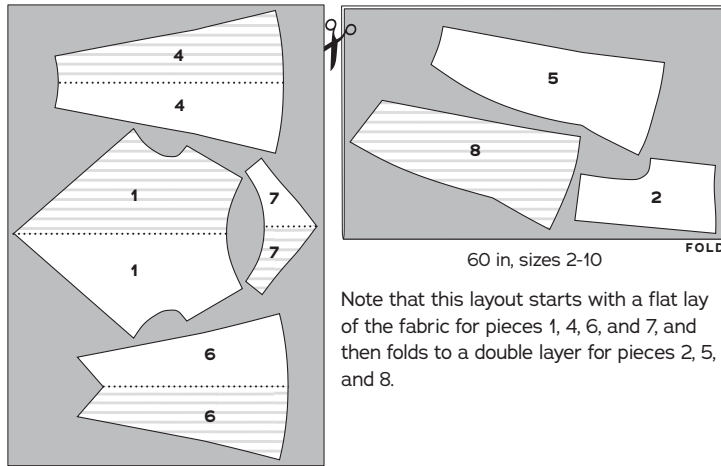
REQUIRED YARDAGE & CUTTING LAYOUTS (CONT'D)

Short Dress, Fabric

(1, 2, 4, 5, 6, 7, 8)

60 in	Sizes	Sizes
	2-10	12-20
25/8 yds 2.4 m	23/4 yds 2.5 m	
60 in	Sizes	Sizes
	18-24	26-34
23/4 yds 2.5 m	3 yds 2.7 m	

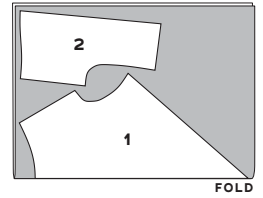
Cut pieces 4, 5, 6, 8 on short skirt cutting line.



Note that this layout starts with a flat lay of the fabric for pieces 1, 4, 6, and 7, and then folds to a double layer for pieces 2, 5, and 8.

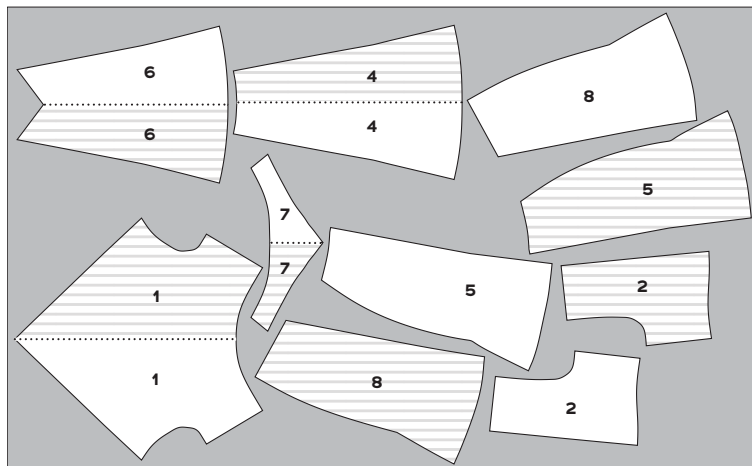
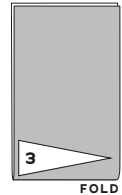
Lining (1, 2)

All sizes	
60 in	1 yd .9 m



Back Inset, Contrast Fabric and Optional Lining (3)

All sizes	
60 in	3/8 yd 0.4 m



60 in, sizes 12-34



SEWING INSTRUCTIONS

BEFORE SEWING

Transferring marks: use dressmaker's tracing paper and a tracing wheel to transfer all pattern markings to the wrong side (WS) of your fabric. Mark pattern notches by snipping into the seam allowance with the tip of your scissors.

Seam Finishing: the bodice is fully lined, so finishing is not necessary. Knits typically do not fray, so seam finishing on the skirt is optional.

NOTES

- 5/8-in (1.5 cm) seam allowances are included on all pattern pieces, except where otherwise noted.
- For a short skirt, cut the Skirt Front (4), Skirt Side Front (5), Skirt Back (6), and Skirt Side Back (8) at the short skirt cutting line.

TIPS

- Use a stretch, ballpoint, or jersey needle to avoid skipped stitches.
- Use a twin needle or narrow zigzag stitch on hems to provide some stretch (about 1.5 mm wide by 2.5 mm long). Use a slightly wider zigzag stitch (2.5 mm by 2.5 mm) and hold the fabric taut as you are sewing it (this will help retain stretch in the fabric).
- Press your stitching lines after every step, even when not specified in the instructions. You do not need to press basting or gathering stitches. Be cautious when pressing spandex or other synthetic fabrics as they can burn easily. Use a synthetic setting on your iron. Never press velvet; use steam only.

SEW THE DRESS

Bodice

1. Sew shoulder seams: clip into seam allowance at front shoulder circle on Bodice Front (1). Pin bodice front to Bodice Backs (2) at shoulder seam, right sides (RS) together, aligning circles. Stitch from circle to armhole raw edge. Press seam allowances open. Repeat for bodice linings.

For a sleeveless dress, skip to the Bodice Neckline section. If adding sleeves (from the Society Dress), continue to the next step.

2. Sew side seams: with RS together, pin bodice front to bodice backs at side seams. Stitch side seams and press seam allowances open. Repeat for bodice linings.

Proceed to the Bodice Neckline section.

Bodice Neckline

The bodice back inset modesty panel is optional. For a gown with a bodice back inset, proceed to the next step. For a gown without a bodice back inset, skip to Step 4 (Pin lining to bodice neckline).

1. Line back inset: with RS together, pin Bodice Back Inset (3) fabric to bodice back inset lining along short upper edge. Stitch. Grade seam allowances so the fabric is wider and the lining is narrower.

2. Understitch back inset: with bodice back inset opened out and seam allowances underneath, stitch along the back inset lining $\frac{1}{8}$ in (3 mm) from the seamline on the lining's RS, catching seam allowances in stitching. Turn WS together and press, rolling seamline just to the WS. Baste both long edges with a $\frac{1}{2}$ -in (1.3 cm) seam allowance.

3. Attach back inset: with RS together, pin left side (as worn) of Bodice Back Inset (3) to the bodice opening of the left bodice back (as worn), aligning circles. Baste with a $\frac{1}{2}$ -in (1.3 cm) seam allowance.

4. Pin lining to bodice neckline: with RS together, pin bodice unit to lining unit along cowl neckline and open back edges. The back inset will be sandwiched between the lining and the bodice, if applicable.

5. Attach lining to bodice neckline (without back inset): stitch the entire neckline and back opening starting at one waistline edge, pivoting at the cowl neckline point, and ending at the opposite waistline edge. Grade seam allowances so the bodice is wider than the lining.

6. Attach lining to bodice neckline (with back inset): stitch the neckline and back opening starting at the left (as worn) waistline edge, pivoting at the cowl neckline point, and ending at the back inset circle on the opposite side. You will be stitching the side that already has the back inset attached and leaving an opening to attach the other side of the inset in a later step. Clip into the back inset circle where you ended your stitching. Grade seam allowances so the bodice is widest, the lining is narrowest, and the back panel is in between.

7. Understitch bodice neckline: with bodice lining opened out and seam allowances underneath the lining, stitch $\frac{1}{8}$ in (3 mm) from the seamline on the lining's RS, catching seam allowances in the stitching. Start understitching at bodice left (as worn) waistline edge and end $\frac{1}{4}$ in (6 mm) before the back inset circle on the opposite side (for bodice with back inset) or the bodice right waistline edge (for bodice without a back inset), breaking stitching at cowl point as necessary. Press lining to inside of bodice, rolling seamline slightly to WS so it is hidden inside the bodice.

8. Stitch cowl pocket: turn bodice RS out and slide a coin or washer into the point of the cowl neckline. Pin to hold it into place. From the RS, topstitch across the cowl point above the coin to secure. The weight of the coin will help the cowl neckline lay properly.

Proceed to the next step for a sleeveless dress. For a dress with Society sleeves, skip to the Sleeves section.

9. Finish armholes: with garment WS out, pin lining armholes to bodice armholes, RS together, matching notches and shoulder seams. Stitch around each armhole. Grade seam allowances so those on the bodice are wider. Clip into armhole curve every $\frac{1}{2}$ in (1.3 cm).

10. Turn lining to WS: turn the bodice RS out by reaching through each front shoulder and pulling bodice backs through.

11. Understitch armholes: understitch each armhole as for neckline, sewing the front and back of the armhole separately. Break stitching by backstitching and trimming the threads and restarting on the other side of the armhole when the shoulder gets too narrow to continue. Press armhole edges, rolling seamline to WS.

12. Finish back opening (with back inset): reaching through the layers, pin the right side (as worn) of the bodice back opening so that the inset is sandwiched in between the lining and bodice back, matching circles. The RS of the bodice back inset will face the RS of the bodice; the WS of the bodice back inset will face the RS of the lining. Stitch from back inset circle to waistline edge. Grade seam allowances so the bodice is widest, the lining is narrowest, and the inset panel is in between.

13. Finish understitching bodice neckline (with back inset): reaching through the layers, with bodice lining opened out and seam allowances underneath the lining, stitch $\frac{1}{8}$ in (3 mm) from the seamline on the lining's RS, catching all seam allowances in stitching. Understitch only the section of back inset sewn in the previous step. Press lining to inside of bodice, rolling seamline slightly to WS so it is hidden inside the bodice.

For a dress with sleeves, skip to the Sleeves section. For a sleeveless dress, continue to the next step.

14. Sew side seams: open out the lining away from the bodice. Pin bodice front to bodice back, RS together, from bodice waist raw edge to lining waist raw edge. Stitch side seam, including lining, in one pass and press seam allowances open. Turn lining back to WS of bodice.

Skip to the Skirt section.

Sleeves

Follow the directions in either the Bishop Sleeves section or Short Pleated Sleeves section of the Society Dress instructions to assemble and attach the sleeves, aligning notches.

Proceed to the Skirt section.

Skirt

1. Baste bodice waistline: pin bodice to bodice lining, WS together, along waist raw edge. Baste with a $\frac{1}{2}$ -in (1.3 cm) seam allowance.

2. Sew skirt princess seams: pin Skirt Front (4) to Skirt Side Fronts (5), RS together, matching notches. Stitch. Press seam allowances open. Repeat to attach Skirt Back (6) to Skirt Side Backs (8).

3. Attach skirt yoke: staystitch the upper edge of the skirt center back with a $\frac{1}{2}$ -in (1.5 cm) seam allowance. Clip to the staystitching at the CB circle on the skirt back unit. Pin Skirt Back Yoke (7) to skirt back unit, RS together. Stitch from side seam to side seam, pivoting at the CB. Press seam allowances down.

4. Sew skirt side seams: pin skirt front unit to skirt back unit at side seams, RS together and matching notches. Stitch. Press seam allowances open.

5. Attach skirt to bodice: pin skirt to bodice, RS together, matching seams, notches, and circles. Stitch. Grade seam allowances so bodice is widest and press waist seam allowances towards bodice.

FINISHING

1. Allow the dress to hang for at least 24 hours before hemming: try on the dress, wearing the shoes and foundation garments you plan to wear with it. Even the hem by measuring up from the floor and marking the desired hemline plus $\frac{5}{8}$ in (1.5 cm) hem allowance, all the way around the skirt. Trim along the marked line. **NOTE:** for the floor-length gown, you may wish to let it hang for 48 hours or more!

2. Sew the dress hem: press the hem allowance under $\frac{5}{8}$ in (1.5 cm). Topstitch using a twin needle or narrow zigzag stitch $\frac{1}{2}$ in (1.3 cm) from the fold. Press.

3. Tack ribbon or trim to back neckline: try on the dress to determine the length of ribbon, jeweled chain, or rhinestone trim needed for the back opening. For gowns without a bodice back inset panel, one strand is necessary to help the shoulders stay in place. Multiple strands of trim may be used, and the additional strands can hang as low as you desire. Hand stitch one end of each length of trim to each upper circle on the back opening.

Enjoy your glamorous new Starlet Gown!



PATTERN PIECE LOCATION GUIDE

Here is a list to help you locate the pattern pieces on the letter-size tiled pages and A0 pattern sheets.
The tiled pieces and A0 sheets are included as separate pdf files as part of this digital pattern.

SIZES 2-20

PC#	Piece Name	Tiled	A0
1	Bodice Front, A-C Cup	3-7, 11-14	1
1	Bodice Front, D-G Cup	1-4, 8-12	1
1	Bodice Front, H Cup	15-18, 22-26	2
2	Bodice Back	36-38, 43-45	1
3	Bodice Back Inset	39-40	2
4	Skirt Front	8-21	1
5	Skirt Side Front	29-42, 49	2
6	Skirt Back	43-55	3
7	Skirt Back Yoke	27-28	1
8	Skirt Side Back	49-63	3

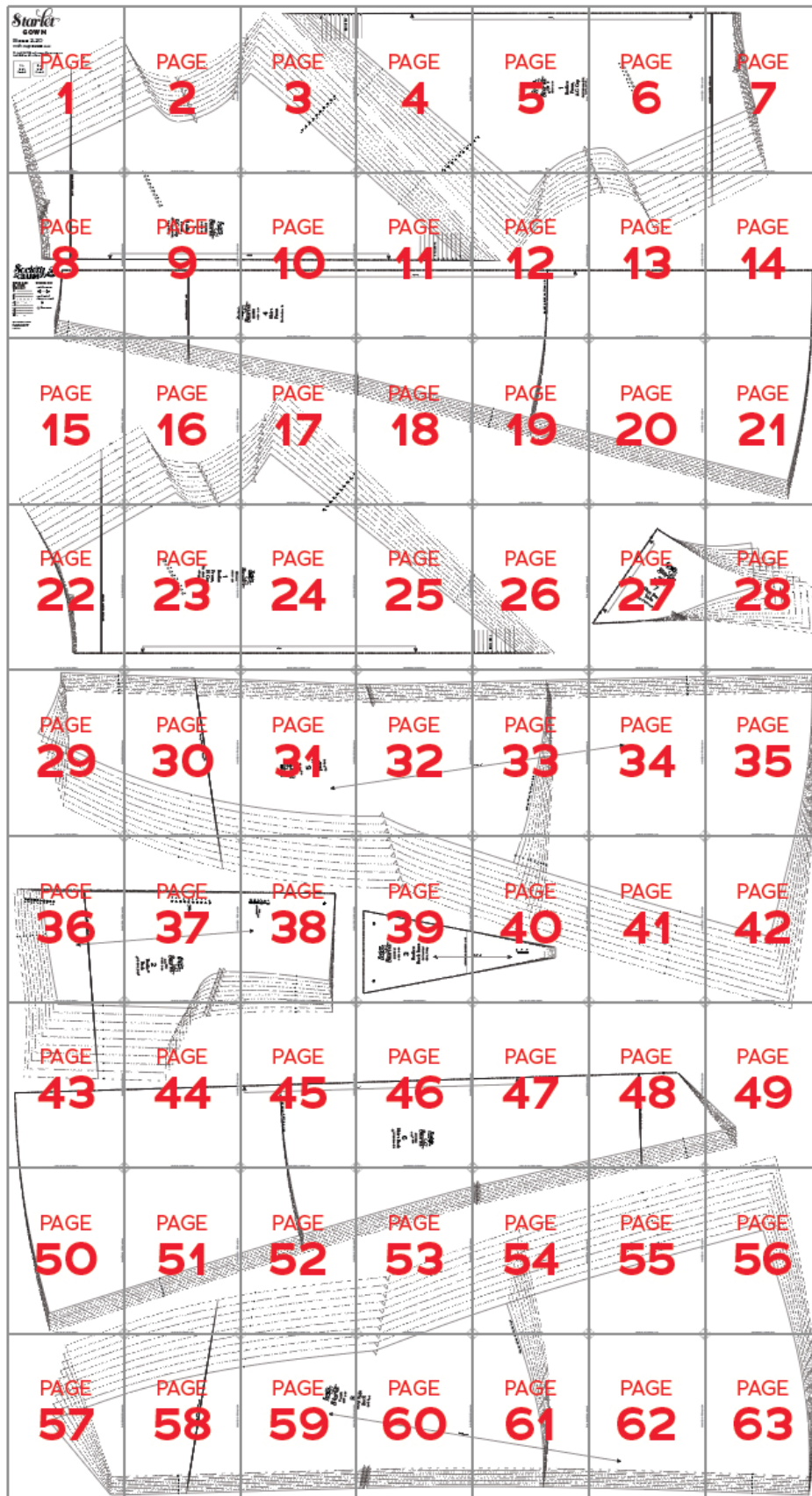
SIZES 18-34

PC#	Piece Name	Tiled	A0
1	Bodice Front, A-C Cup	22, 32-34, 44-46, 56-58	2
1	Bodice Front, D-G Cup	24, 34-36, 46-48, 58-60	2
1	Bodice Front, H Cup	31-32, 42-44, 54-56, 66-67	4
2	Bodice Back	10-12, 22-23	2
3	Bodice Back Inset	1, 13	2
4	Skirt Front	6-9, 15-21	1
5	Skirt Side Front	28-29, 39-41, 51-53, 63-65, 69-72	3-4
6	Skirt Back	2-8, 14-17	1
7	Skirt Back Yoke	30-31, 42	4
8	Skirt Side Back	25-28, 37-39, 49-51, 61-63, 68-69	3-4

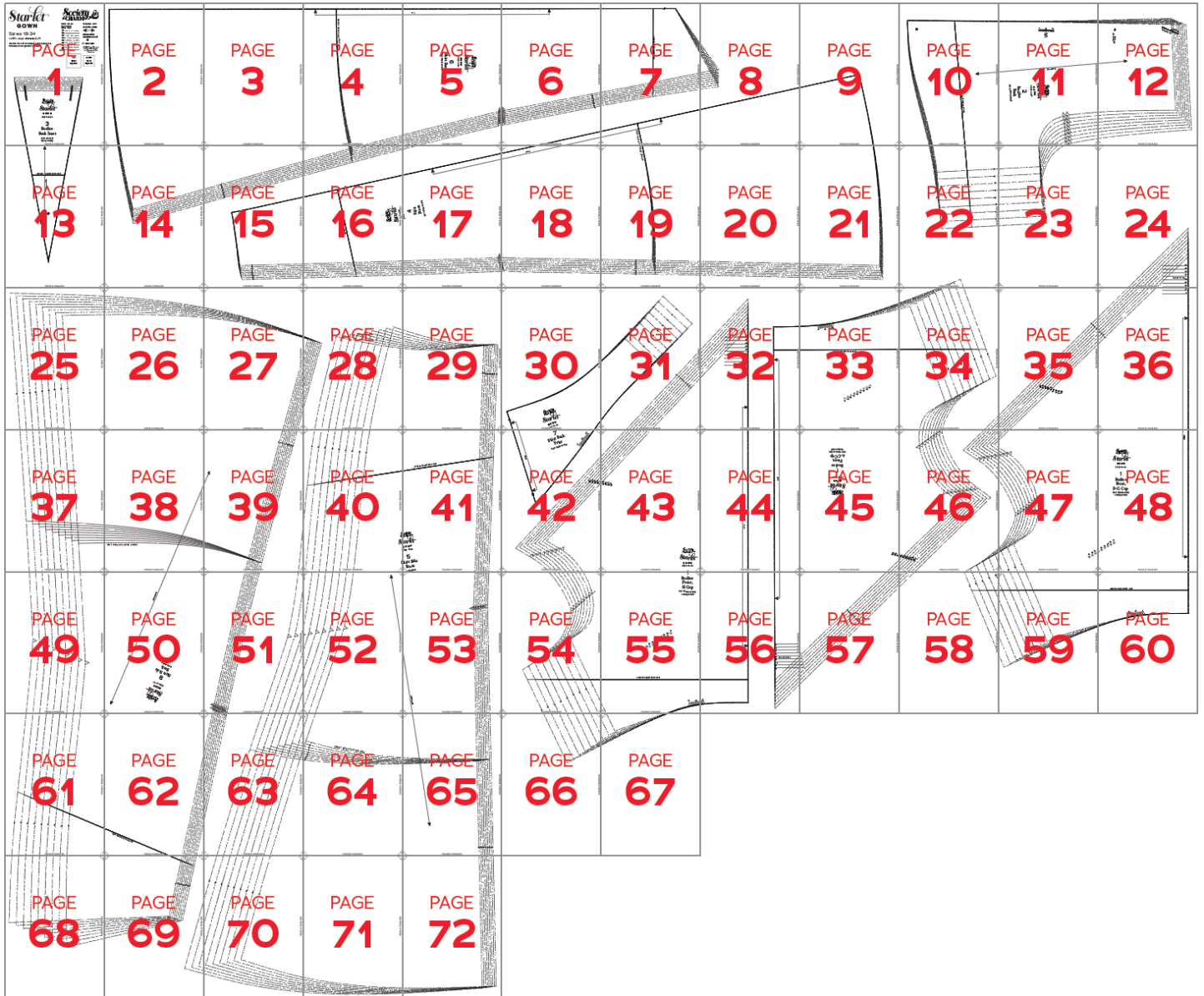


TILING MAPS

Sizes 2-20



Sizes 18-34



HOW TO USE THIS PATTERN

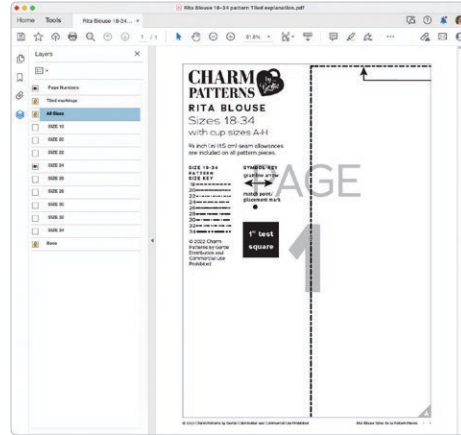
The pattern pieces are tiled so you can print them on Letter (8½" x 11") or A4 size paper. You can also send the A0 pattern sheet PDF to a local or online printer (like ThePlottedPattern.com) to print on large sheets (36" x 48" for U.S. or A0 for international).

This pattern includes size layers. To get the best results, open either the Tiled or A0 pattern pieces PDF in [Acrobat Reader](#).

Open the Layers Palette (View>Show/Hide>Navigation Panes>Layers) and hide all of the layer(s) except for the ones you want to print by clicking on the eye icon.

The All Sizes and Tiled Markings layers have general pattern information and will always print.

You may choose to turn off the Page Numbers layer. The page numbers will still appear at the bottom of each page in the footer.



WORKING WITH THE TILED PIECES

Go to File>Print and change the page range to the pages you need for the pieces you've chosen (see Pattern Pieces Printing Index). Make sure the Page Sizing settings to 100% or Actual Size. Test this after printing by measuring the 1" test box on the first page of the pattern pieces.

Cut apart any pattern pieces that share a page, then fold back or cut off the page margins on each page as marked.

Match the letters in the gray corner diamonds. Tape the pages together, butting up the folded or cut page edges with the gray margin lines.

MORE FROM GERTIE

[At CharmPatterns.com](http://CharmPatterns.com): Shop my sewing patterns and accessories.

[On YouTube](#): Learn beginner and advanced sewing skills and techniques through my tutorials and watch episodes of my Gertie's World series.

[On Instagram](#): Stay in the loop and get inspired.

[On Patreon](#): Access monthly patterns and tutorial videos.

