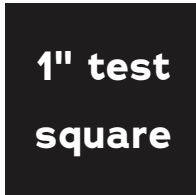




Lucille Trousers

Sizes 2-20

5/8 inch (in) (1.5 cm) seam allowances are included on all pattern pieces.



PATTERN SIZE KEY

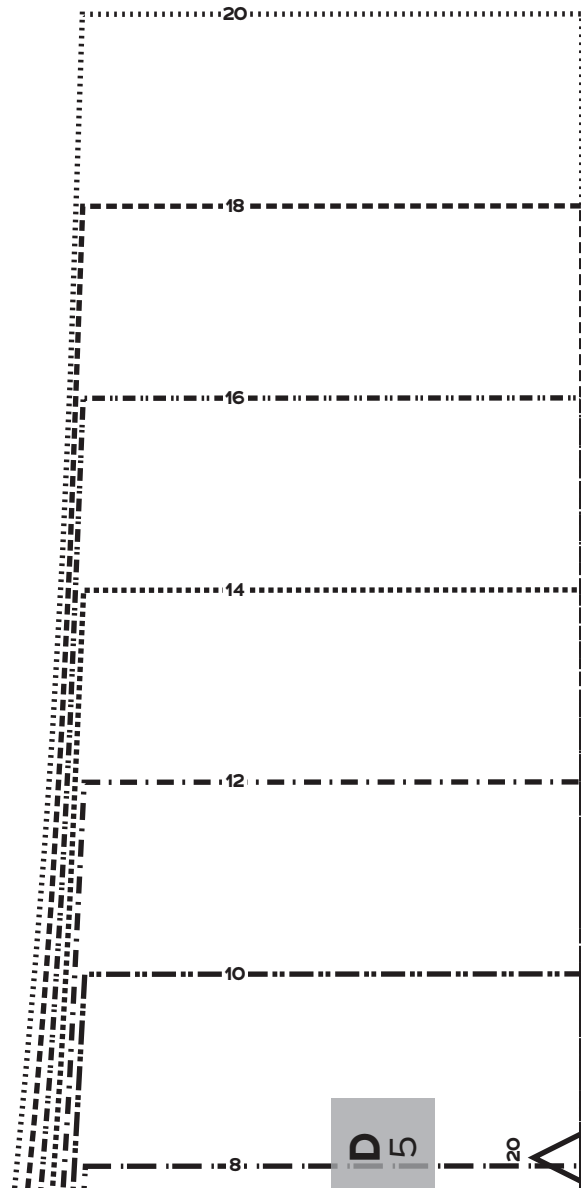
2	—————
4	- - - - -
6
8	- . - . - .
10	- . - . - .
12	- . - . - .
14
16	- . - . - .
18	- - - - -
20

SYMBOL KEY

grainline arrow

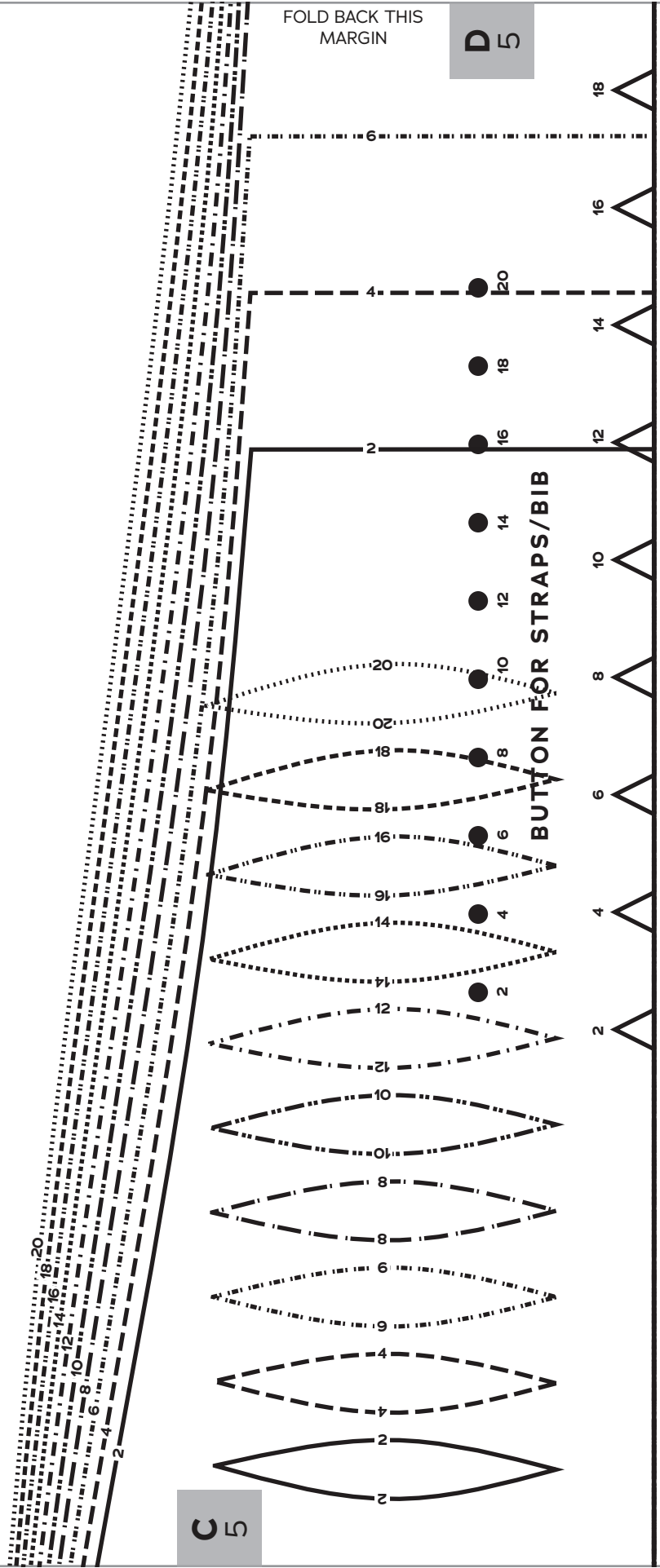


match point/
placement mark



FOLD BACK THIS MARGIN

D 5



C 5

5

5

Curved/Shaped Waistband

Cut 2 fabric, 1 interfacing



Lucille
Trousers

GRAINLINE



B

5

-
-
-
-
-

TRAPS/BIB

5 14 12 10 8 6 4 2



-
-
-
-
-
-
-
-
-
-
-
-
-
-
-
-
-
-
-

BUTTON FOR STRAPS/BIB

2 4 6 8 10 12 14 16 18 20



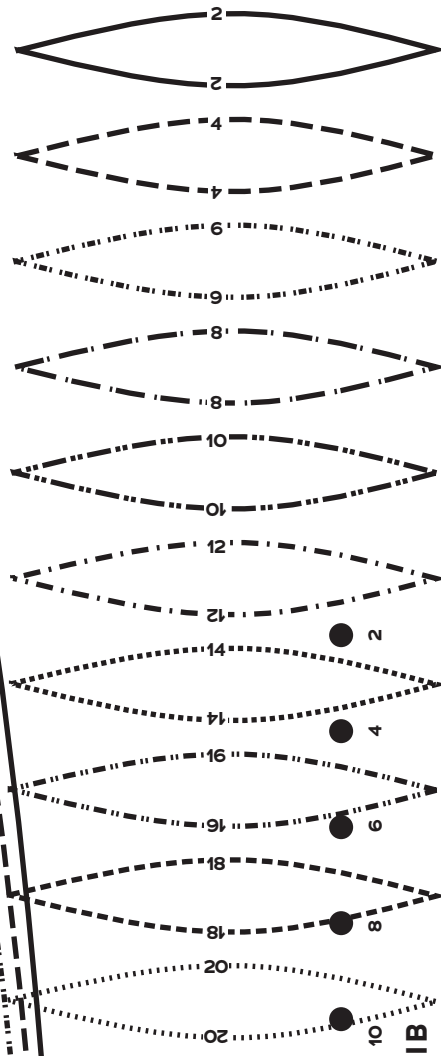
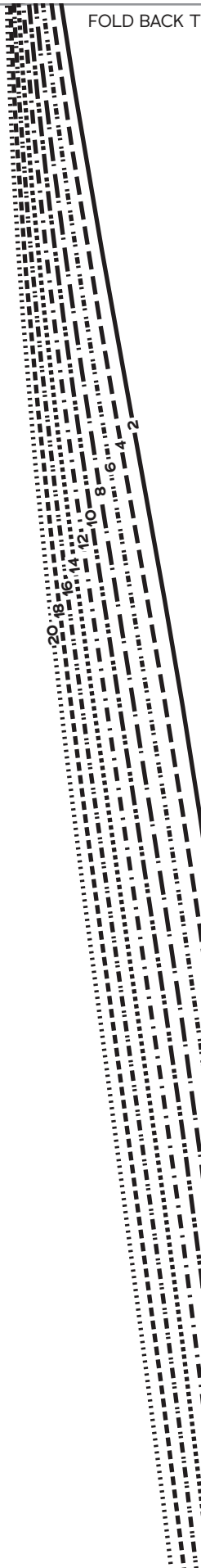
FOLD BACK THIS MARGIN

B 5

- 20
- 18
- 16
- 14
- 12
- 10

BUTTON FOR STRAPS

- 20
- 18
- 16
- 14
- 12
- 10



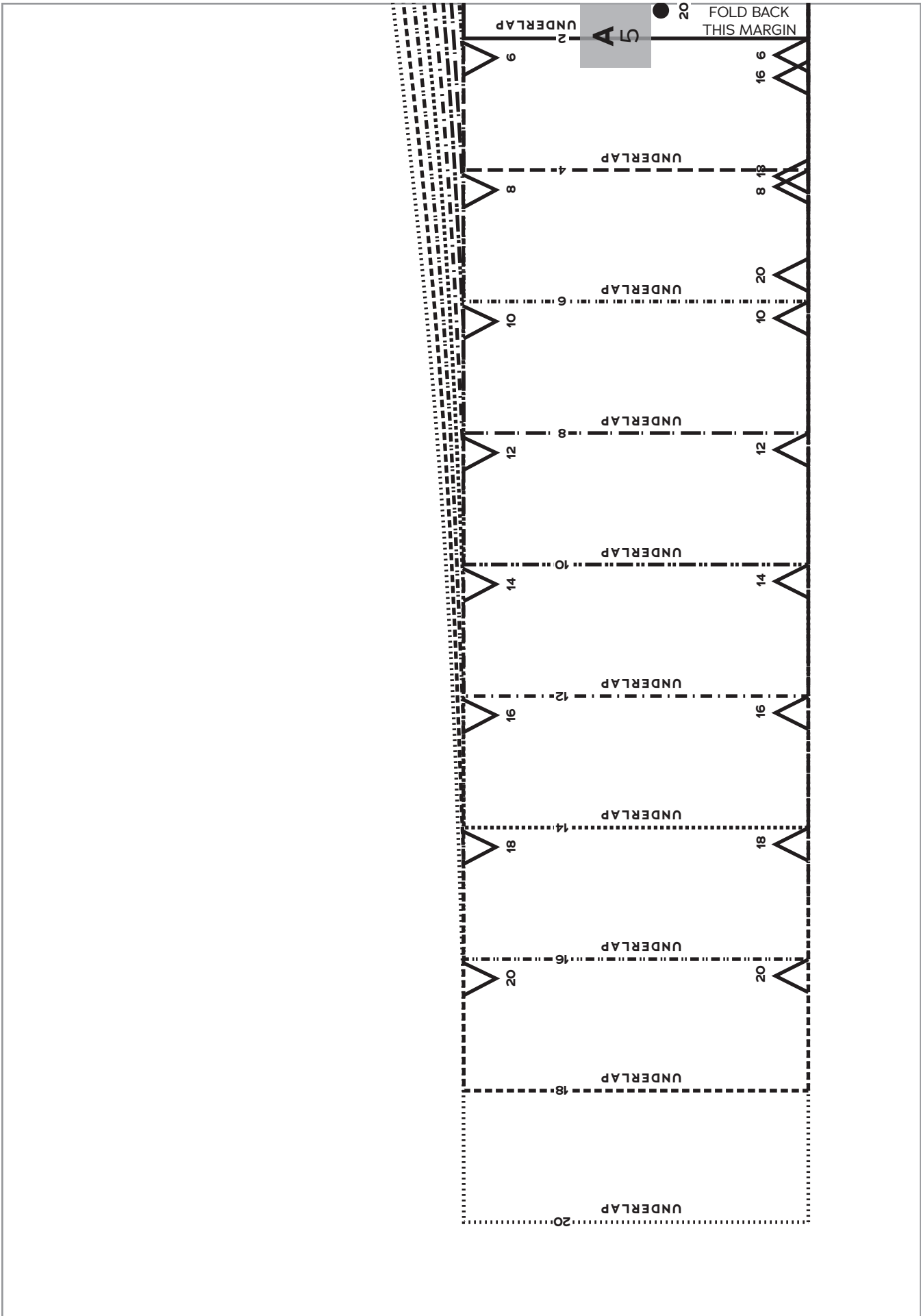
A 5

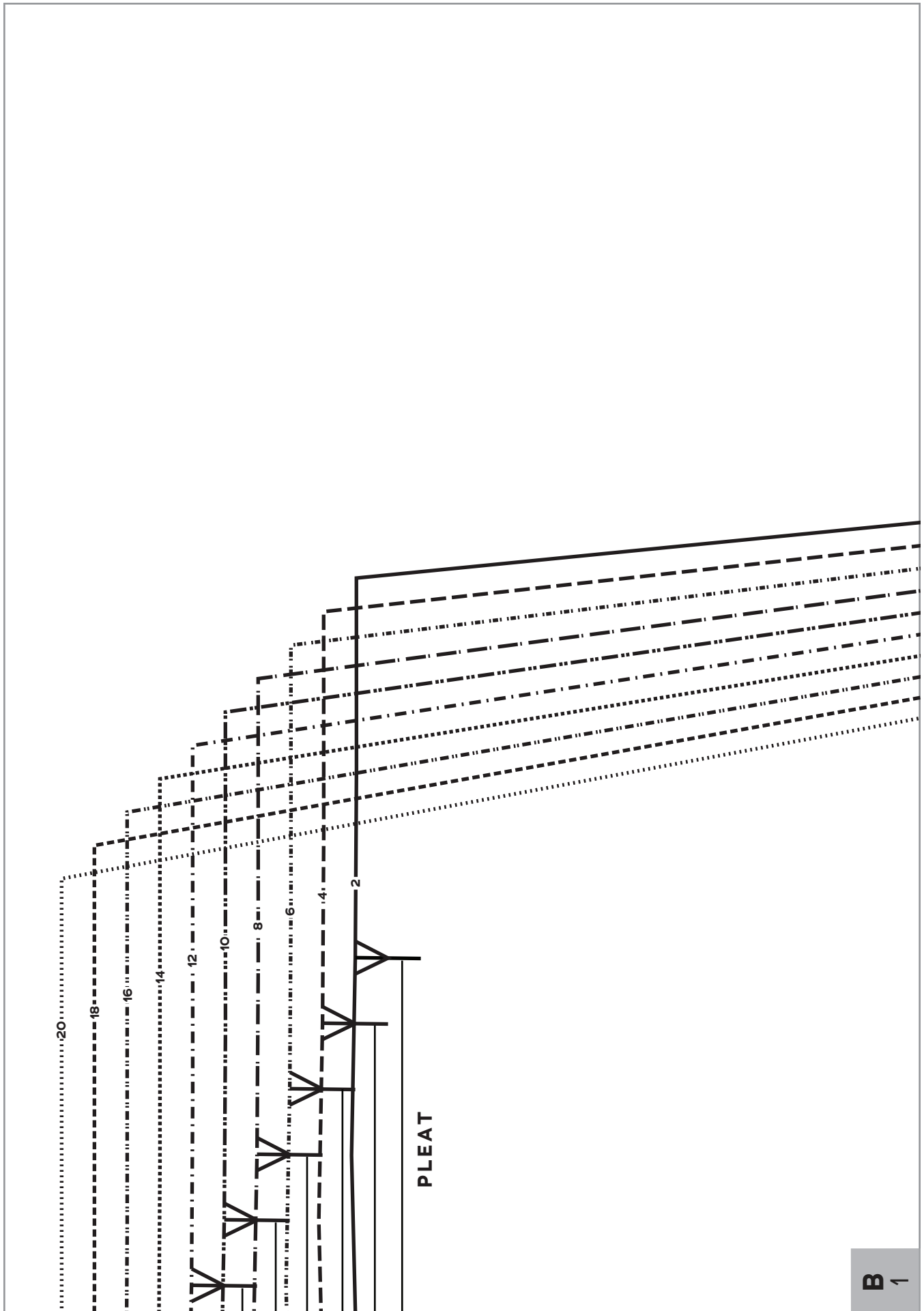
- 18
- 16
- 14
- 12
- 10

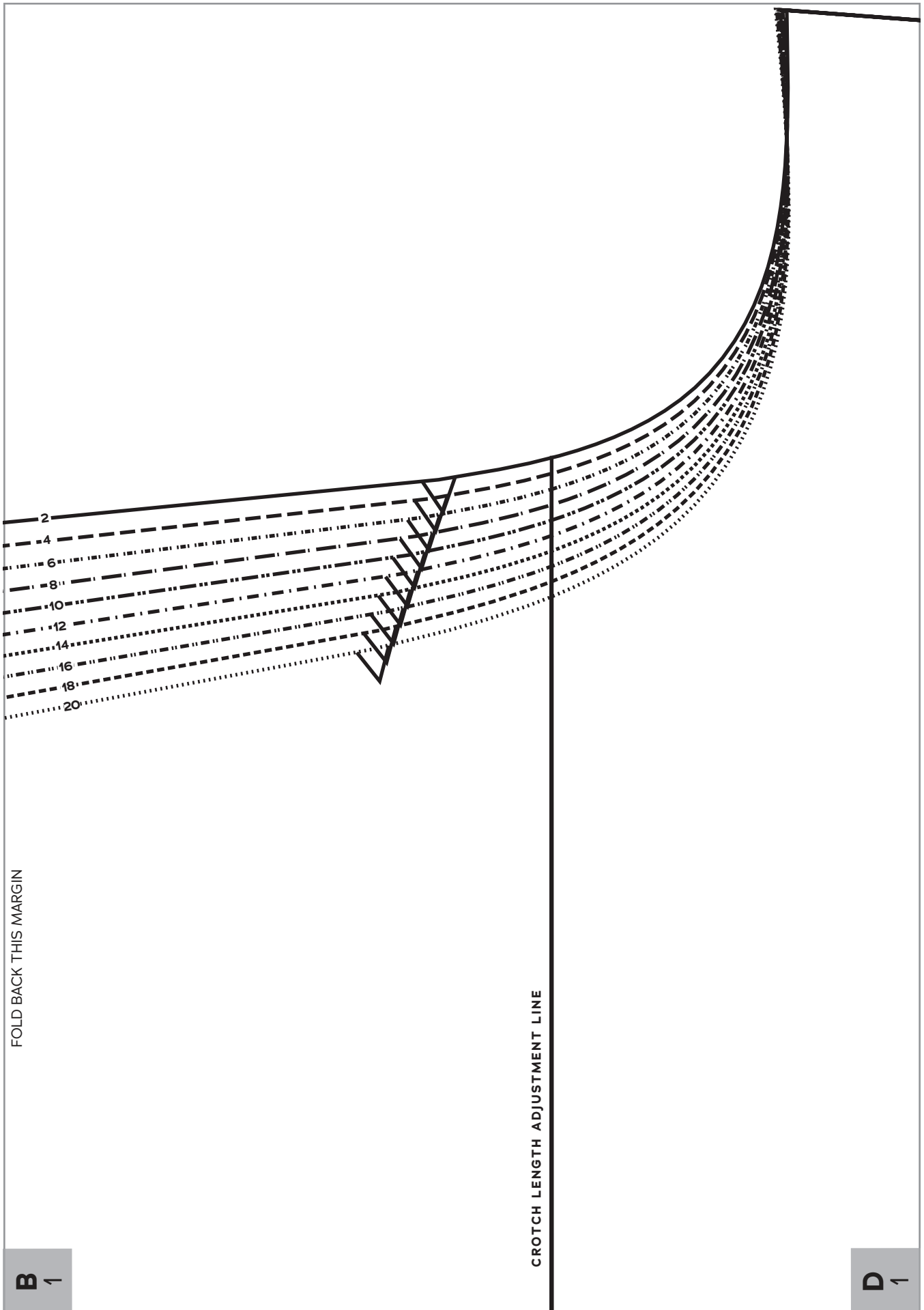
BUTTON FOR STRAPS/BIB

- 14
- 4
- 12
- 2
- 10
- 8
- 6
- 4
- 2









FOLD BACK THIS MARGIN

CROTCH LENGTH ADJUSTMENT LINE

B 1

D 1

FOLD BACK THIS MARGIN

D
1



Lucille
Trousers

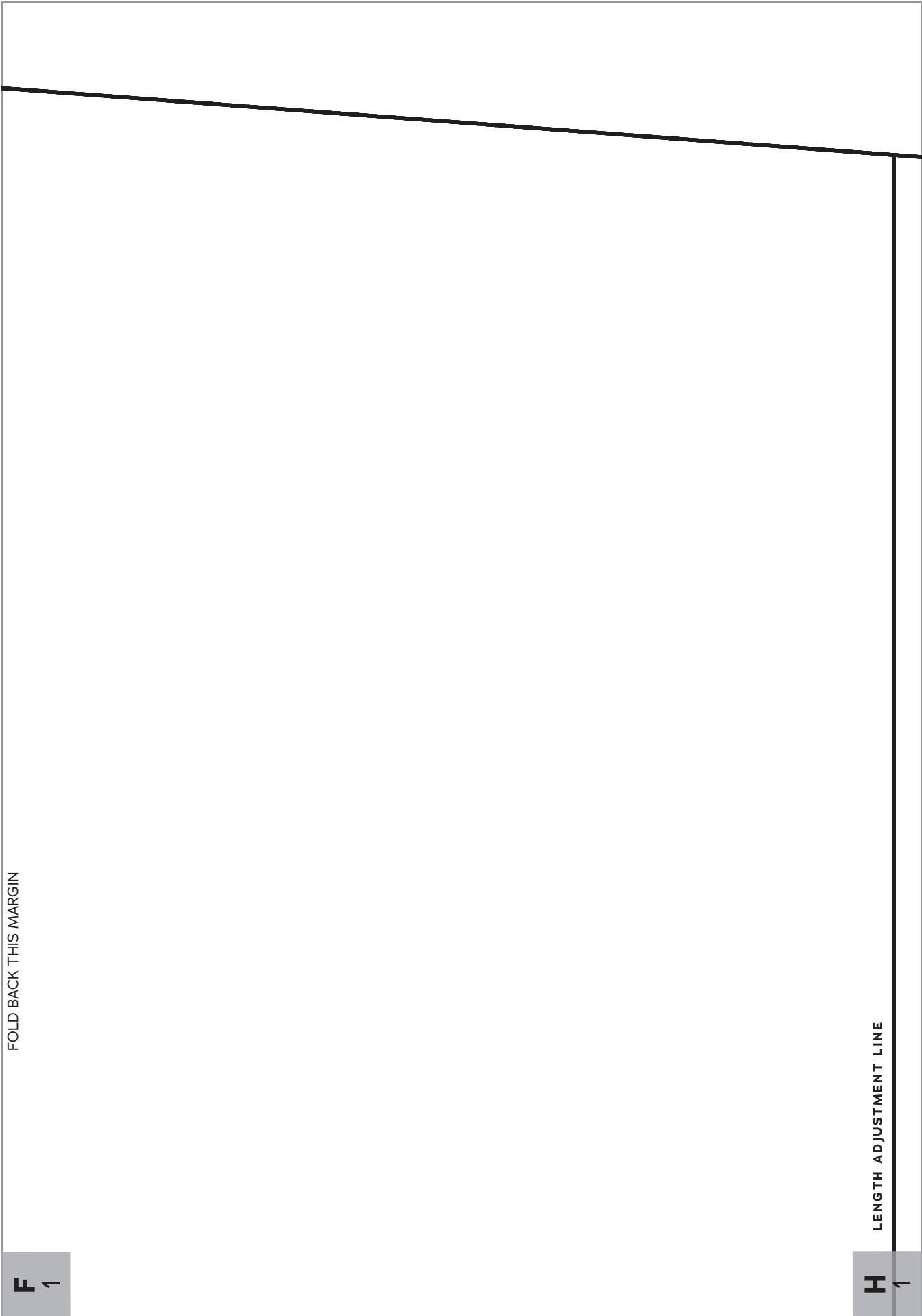
1

Trouser
Front

Cut 2 fabric

SHORTS CUTTING LINE

F
1



FOLD BACK THIS MARGIN

H 1

J 1

FOLD BACK THIS MARGIN



FOLD BACK THIS MARGIN

CUFF FOLD LINE

L 1

Z ←

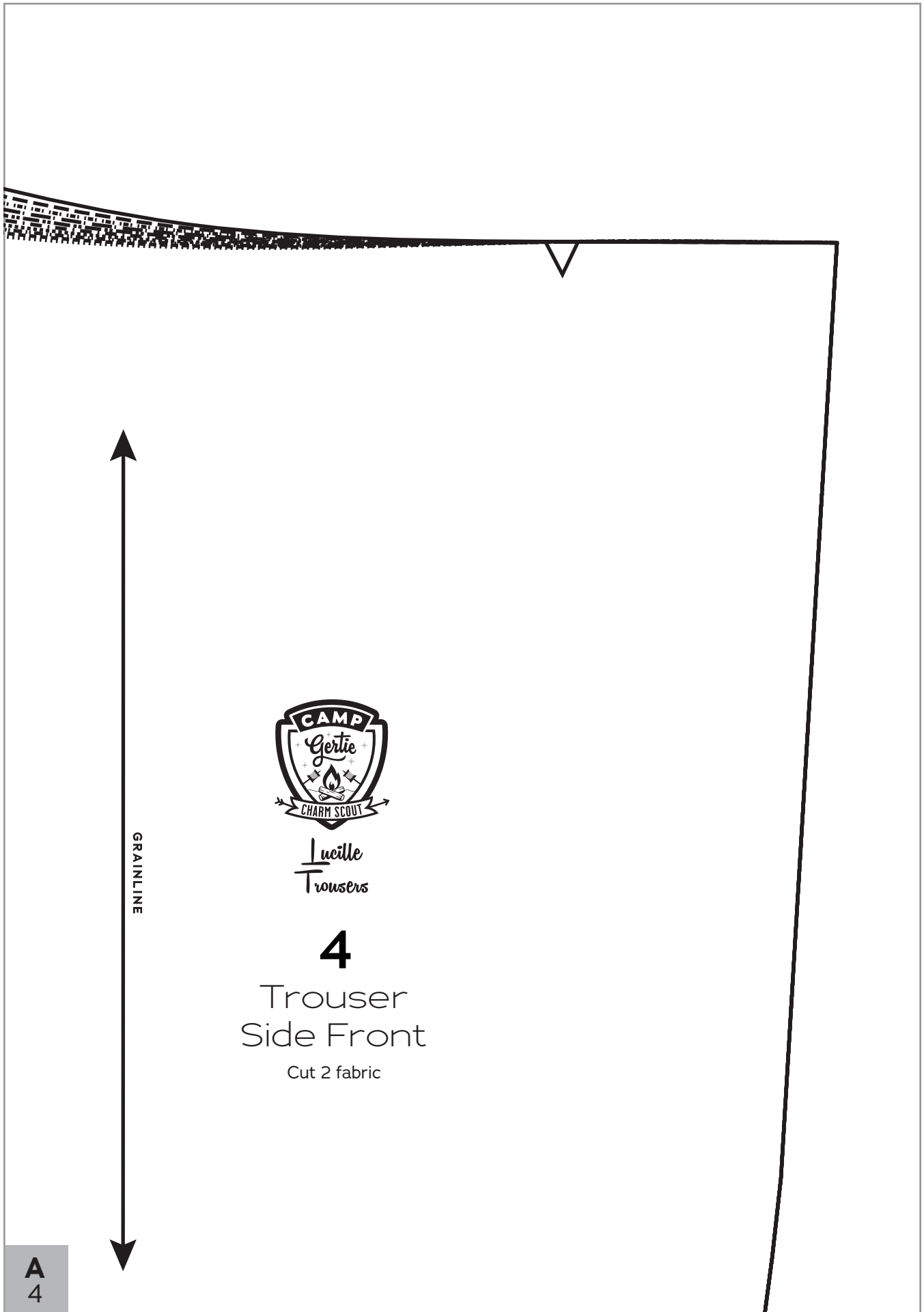
FOLD BACK THIS MARGIN

N
1



20
18
16
14
12
10
8
6
4
2

A
4



Lucille
Trousers

4

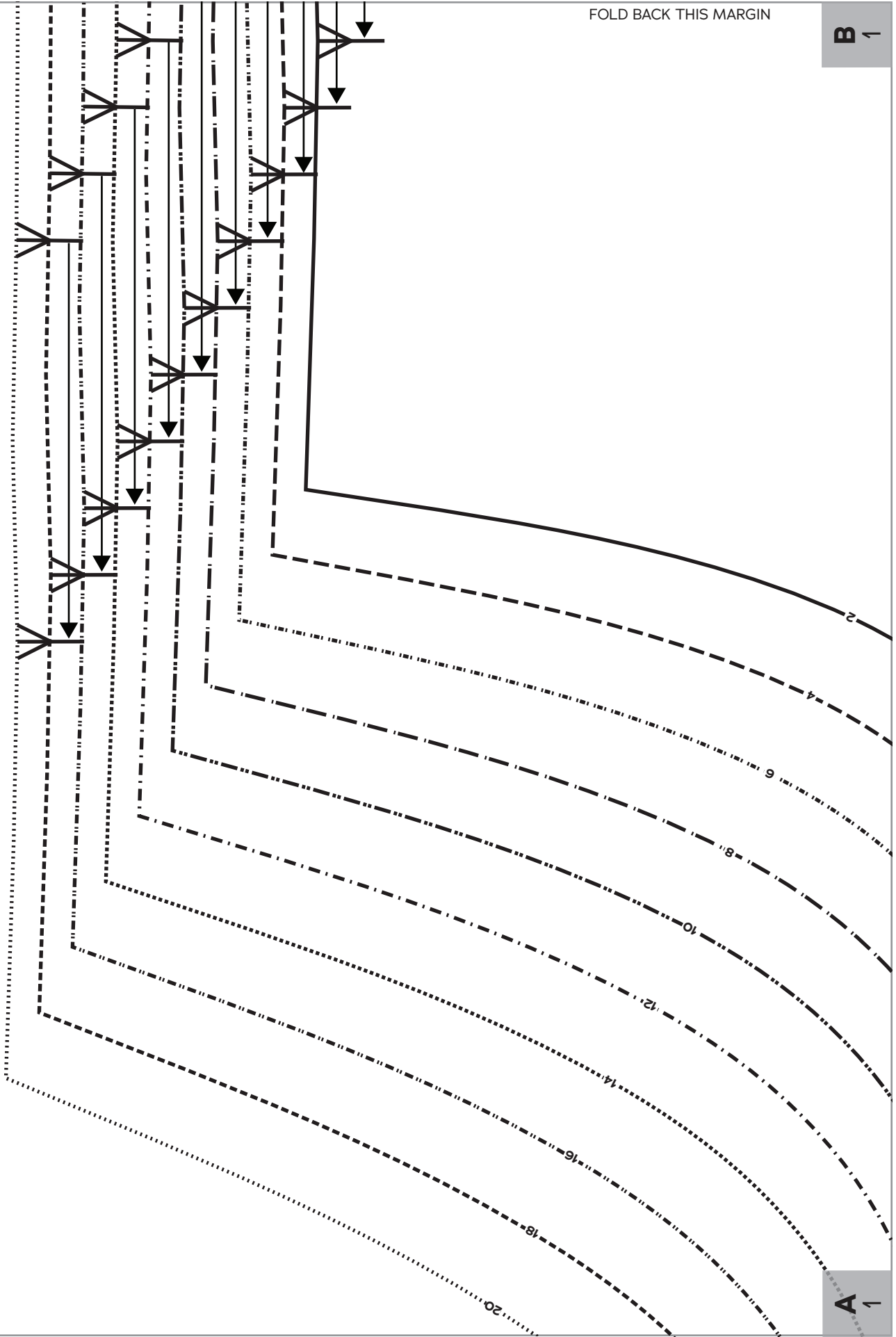
Trouser
Side Front

Cut 2 fabric

A
4

FOLD BACK THIS MARGIN

B ↑



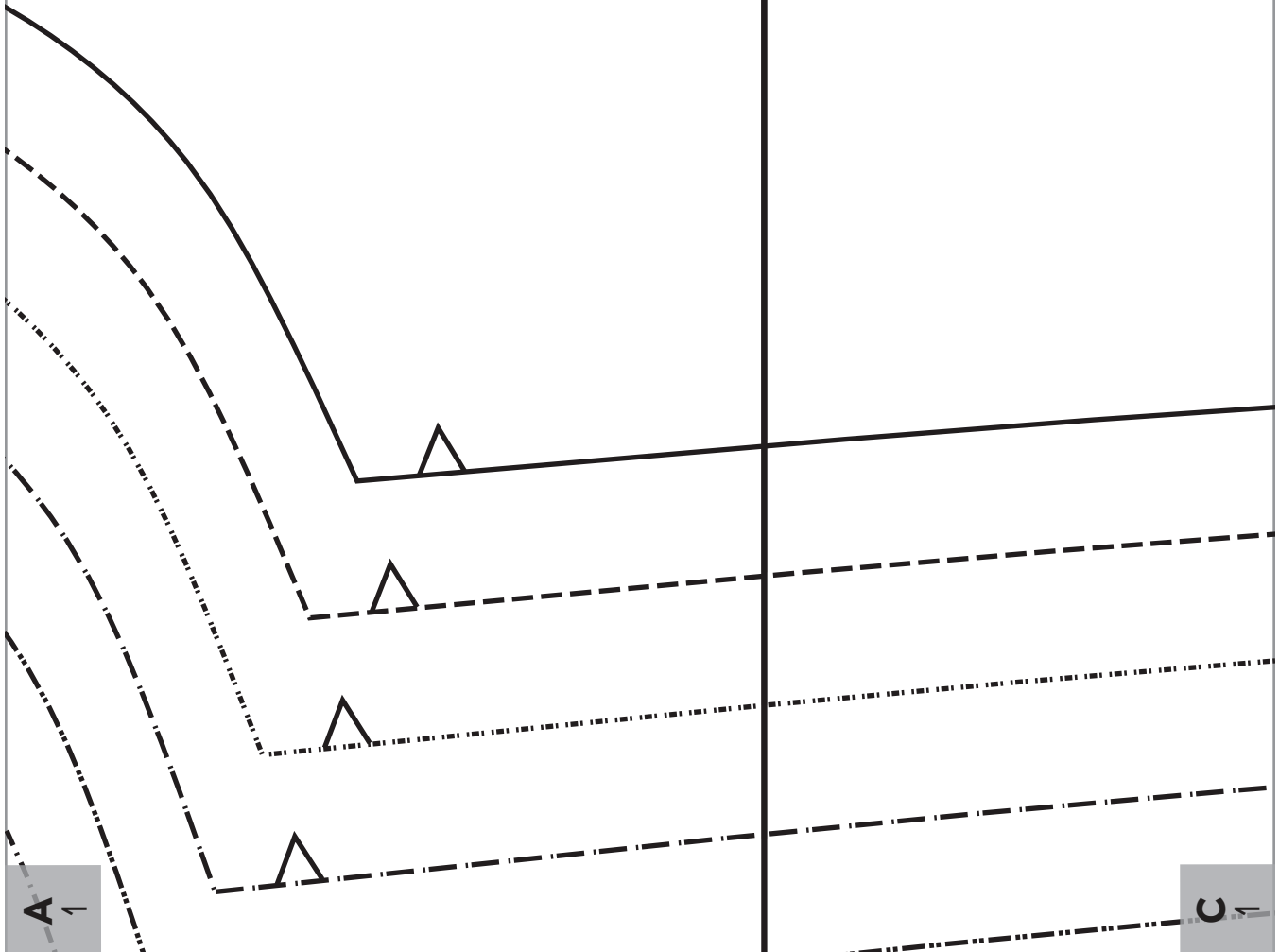
A ↑

B 1

FOLD BACK THIS MARGIN

D 1

FOLD BACK THIS MARGIN



D ↖

FOLD BACK THIS MARGIN

F ↖

FOLD BACK THIS MARGIN

C ↖

E ↖

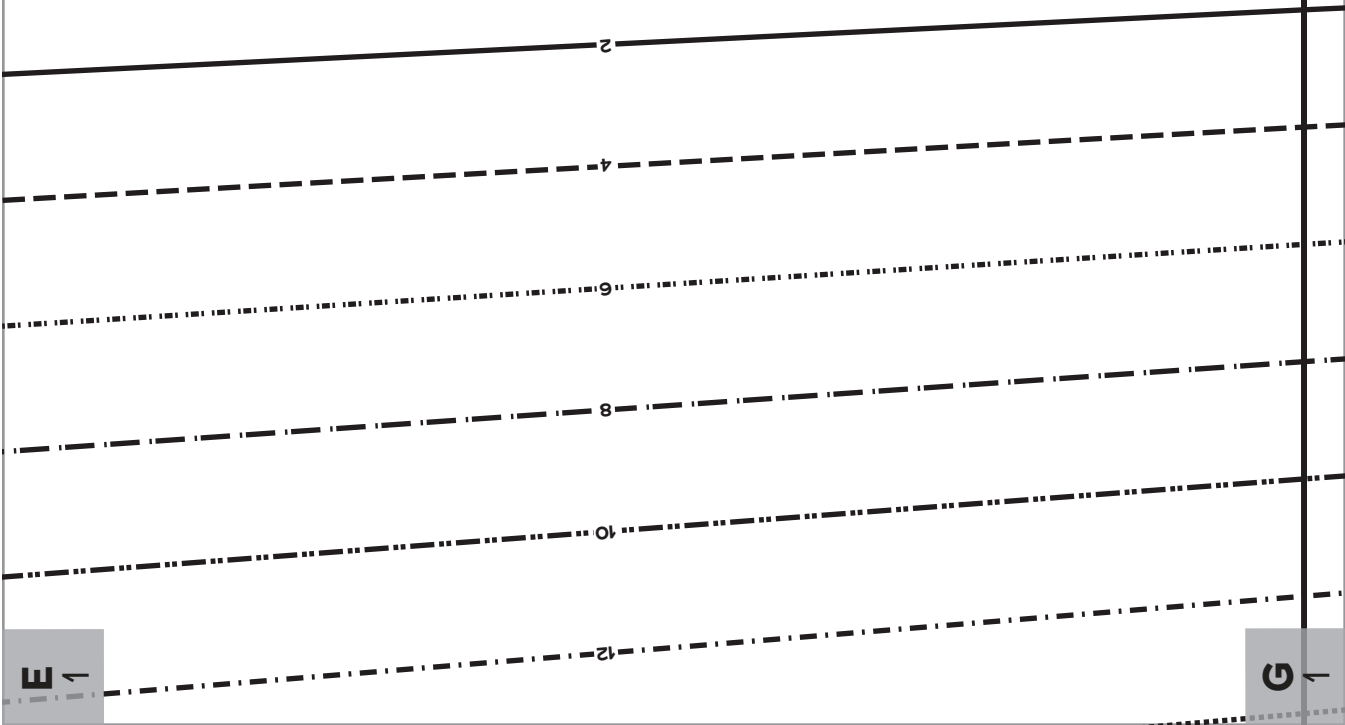
FOLD BACK THIS MARGIN

F ←

H ←

GRAINLINE

FOLD BACK THIS MARGIN



H 1

FOLD BACK THIS MARGIN

J 1

FOLD BACK THIS MARGIN



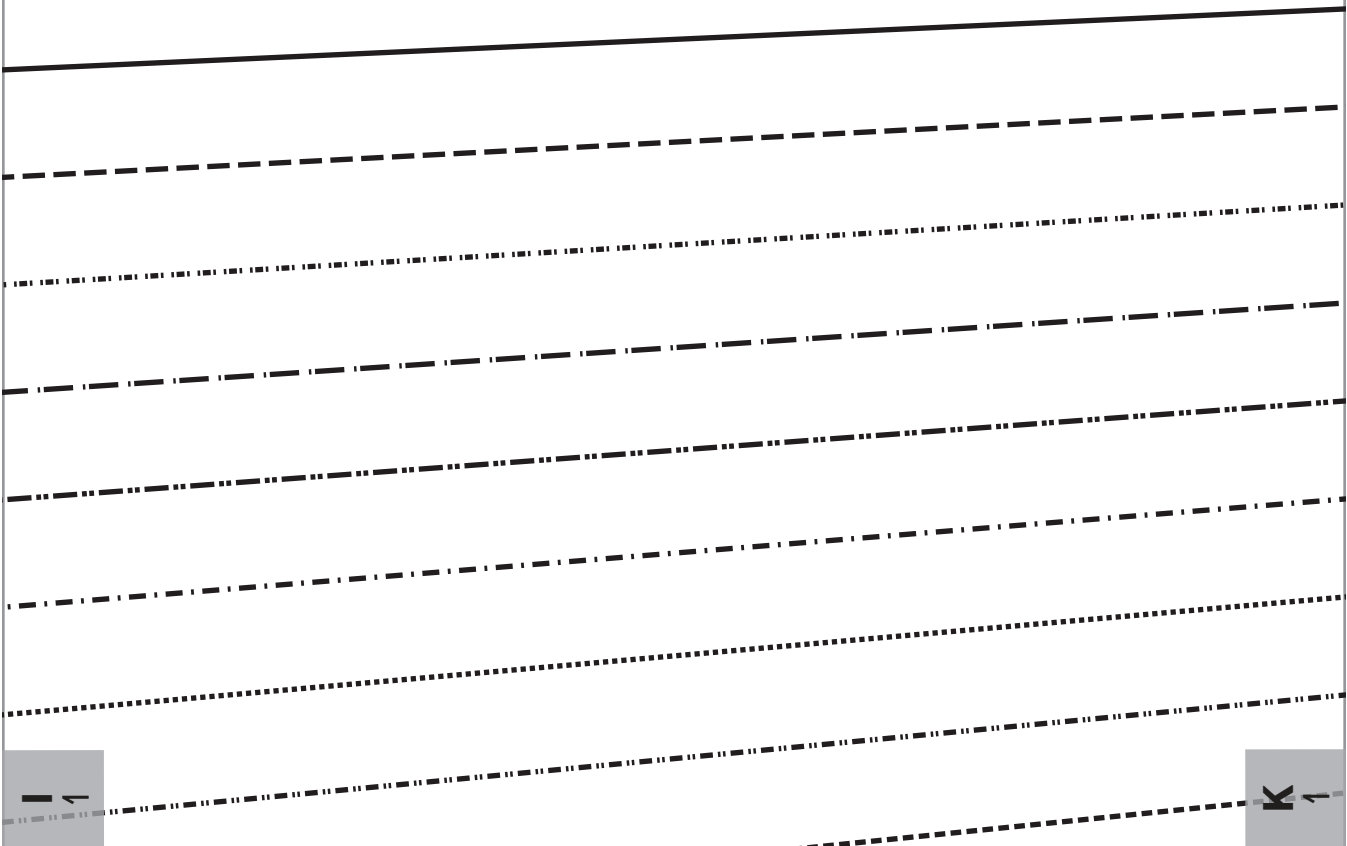
G 1

I 1

FOLD BACK THIS MARGIN



FOLD BACK THIS MARGIN

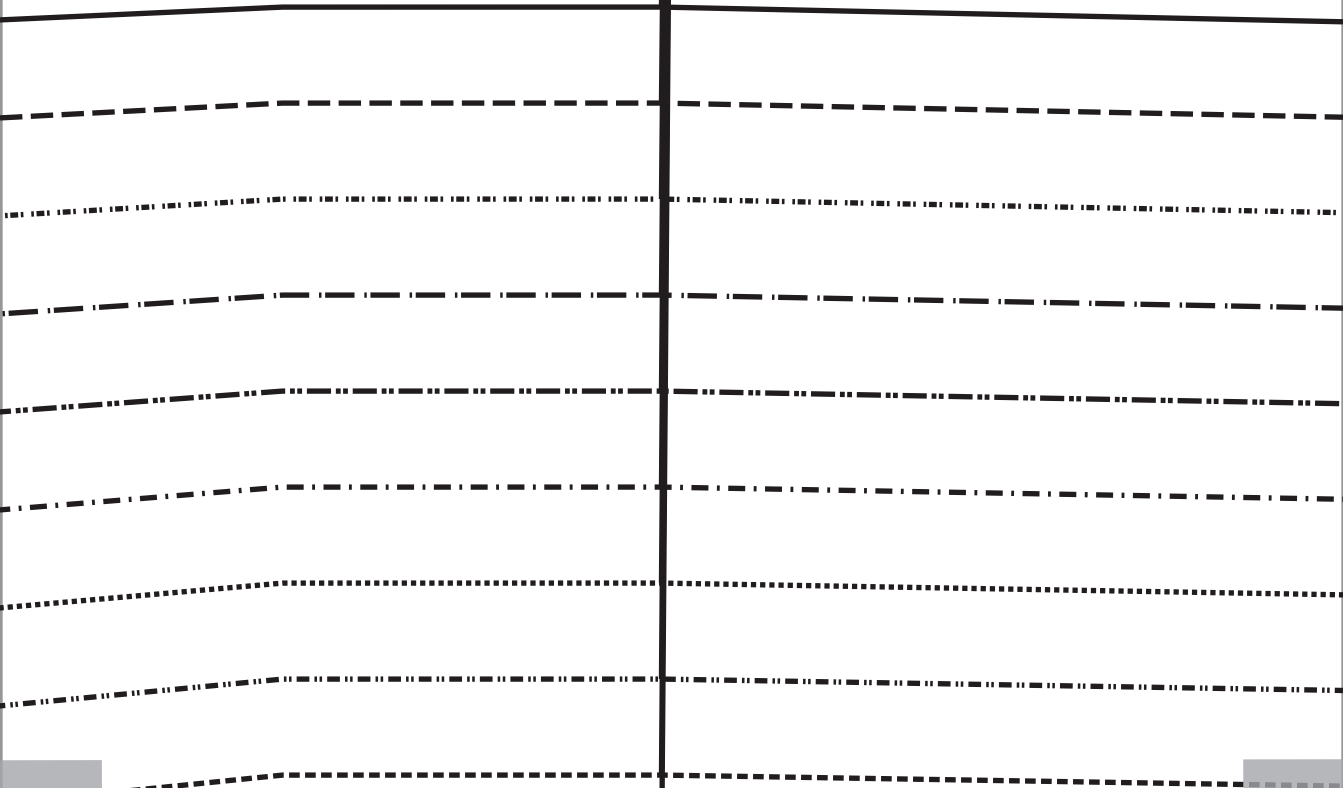


L 1

FOLD BACK THIS MARGIN

Z 1

FOLD BACK THIS MARGIN



K 1

M 1

Z 1

FOLD BACK
THIS MARGIN

A
4

FOLD BACK THIS MARGIN

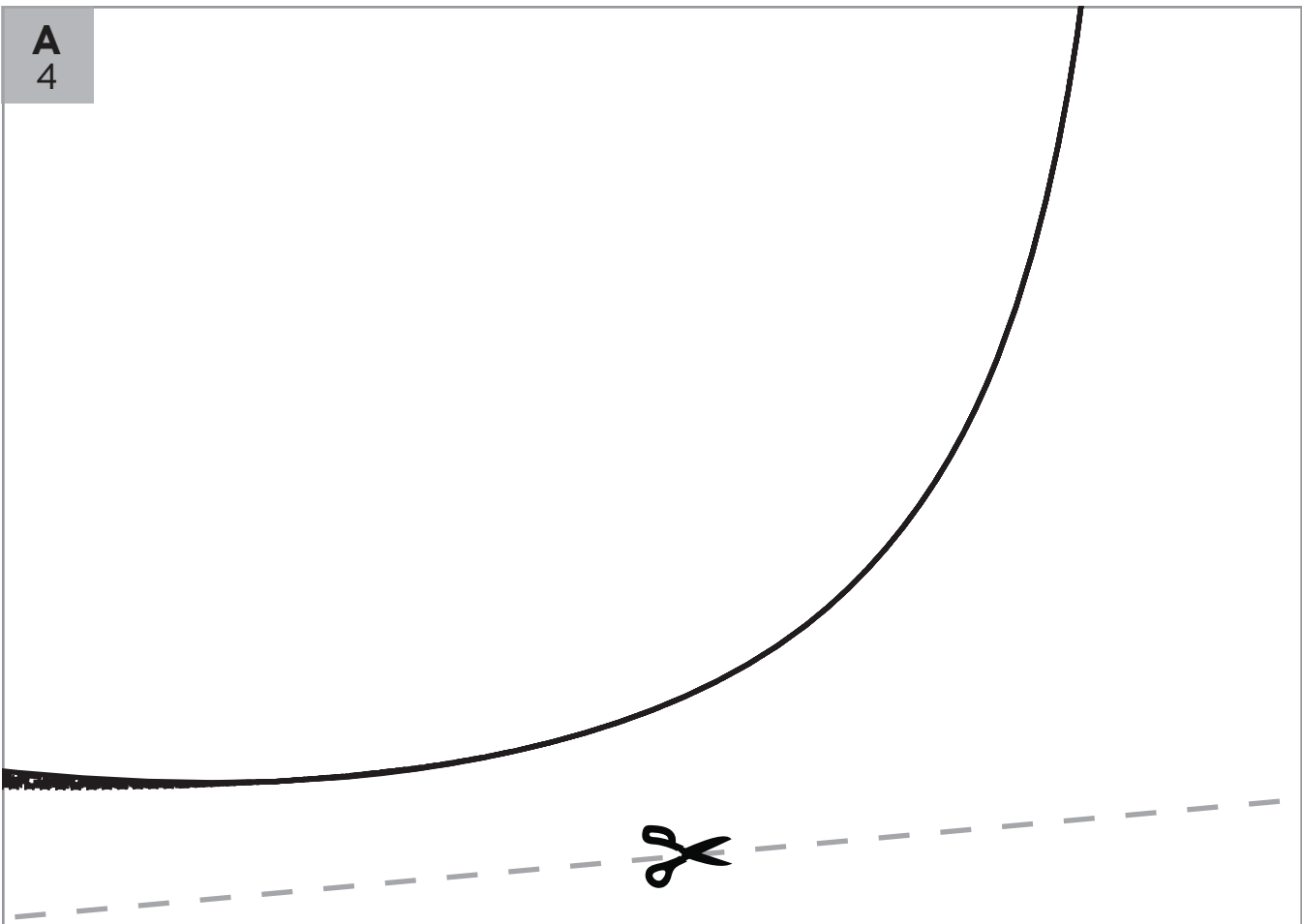


M 1

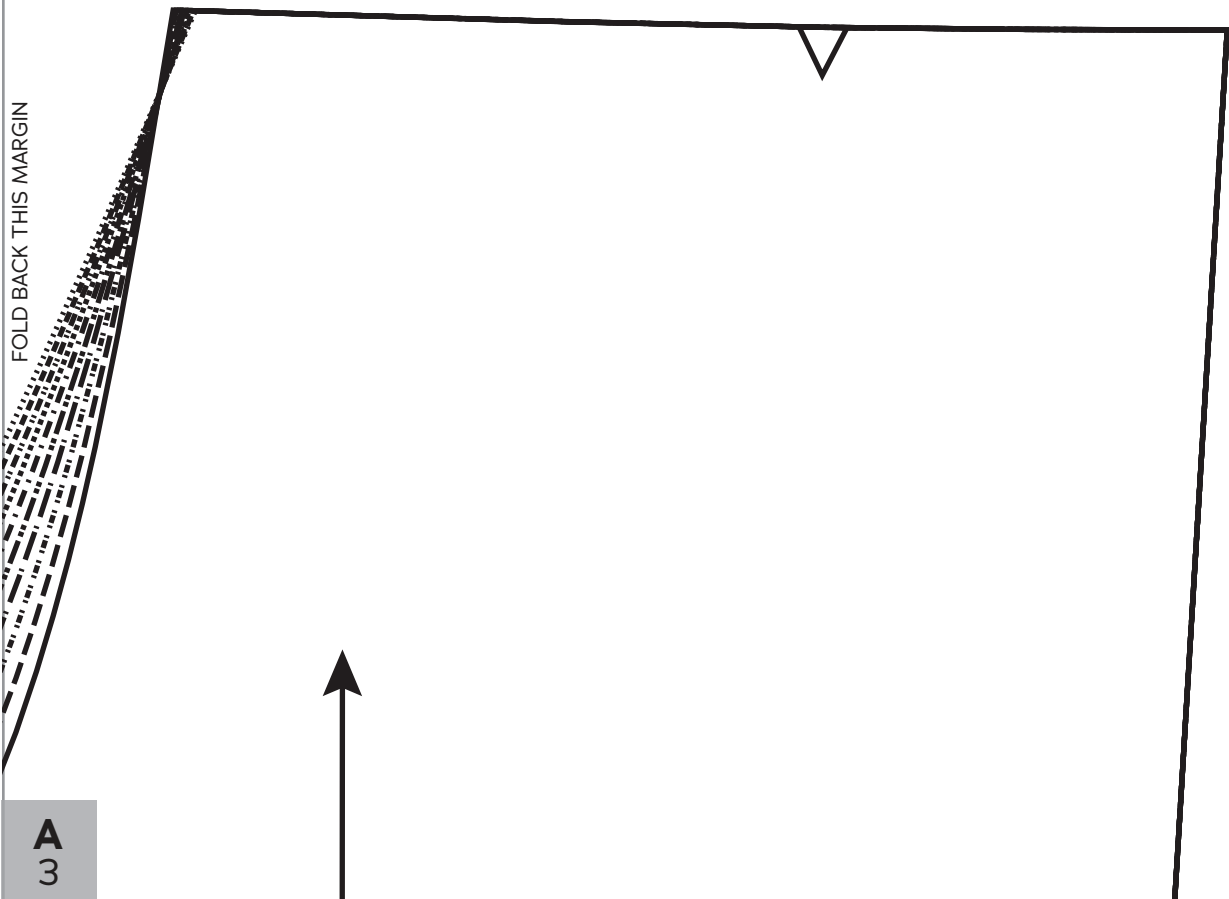
A
3

18
20

A
4



FOLD BACK THIS MARGIN



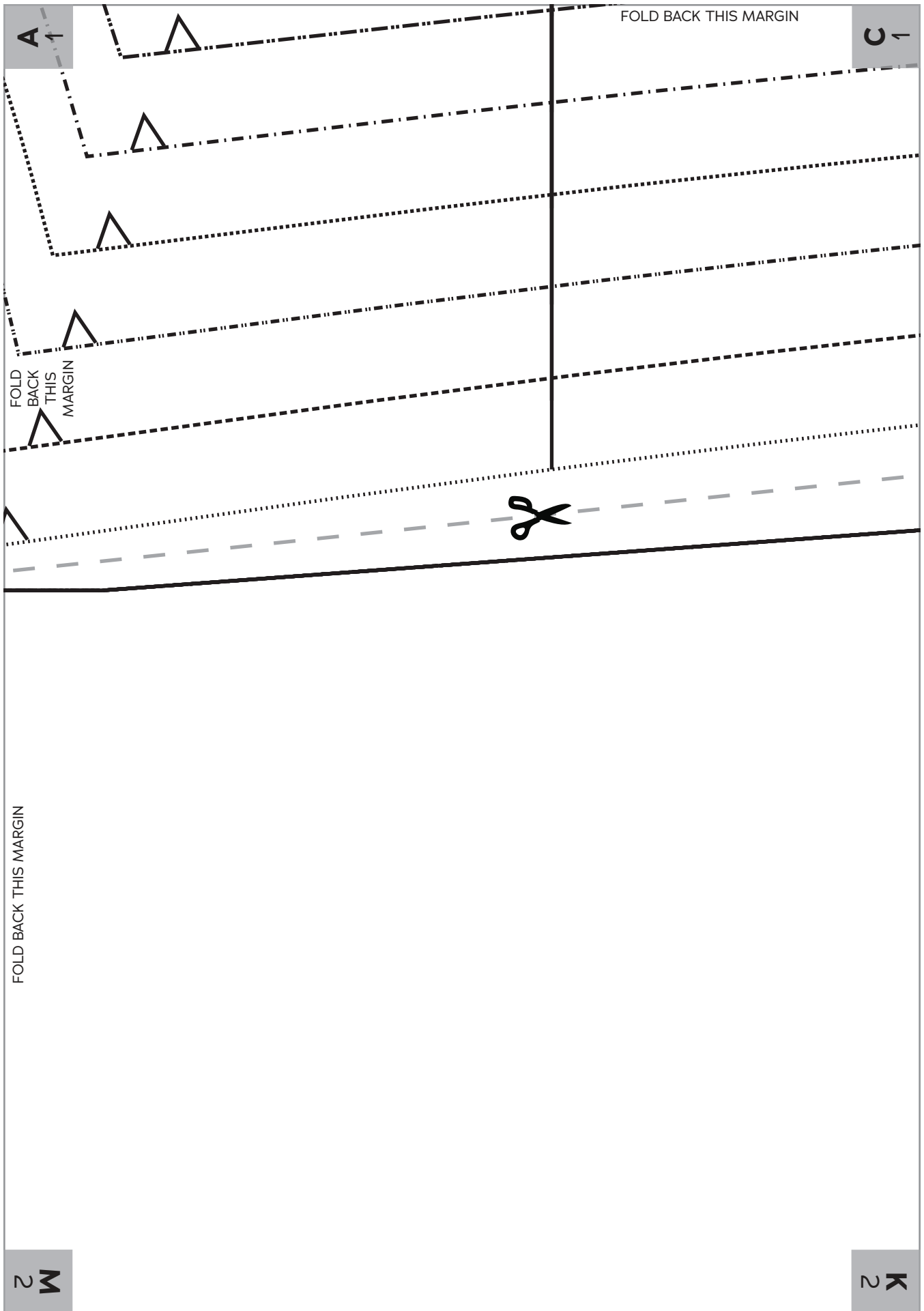
A
3

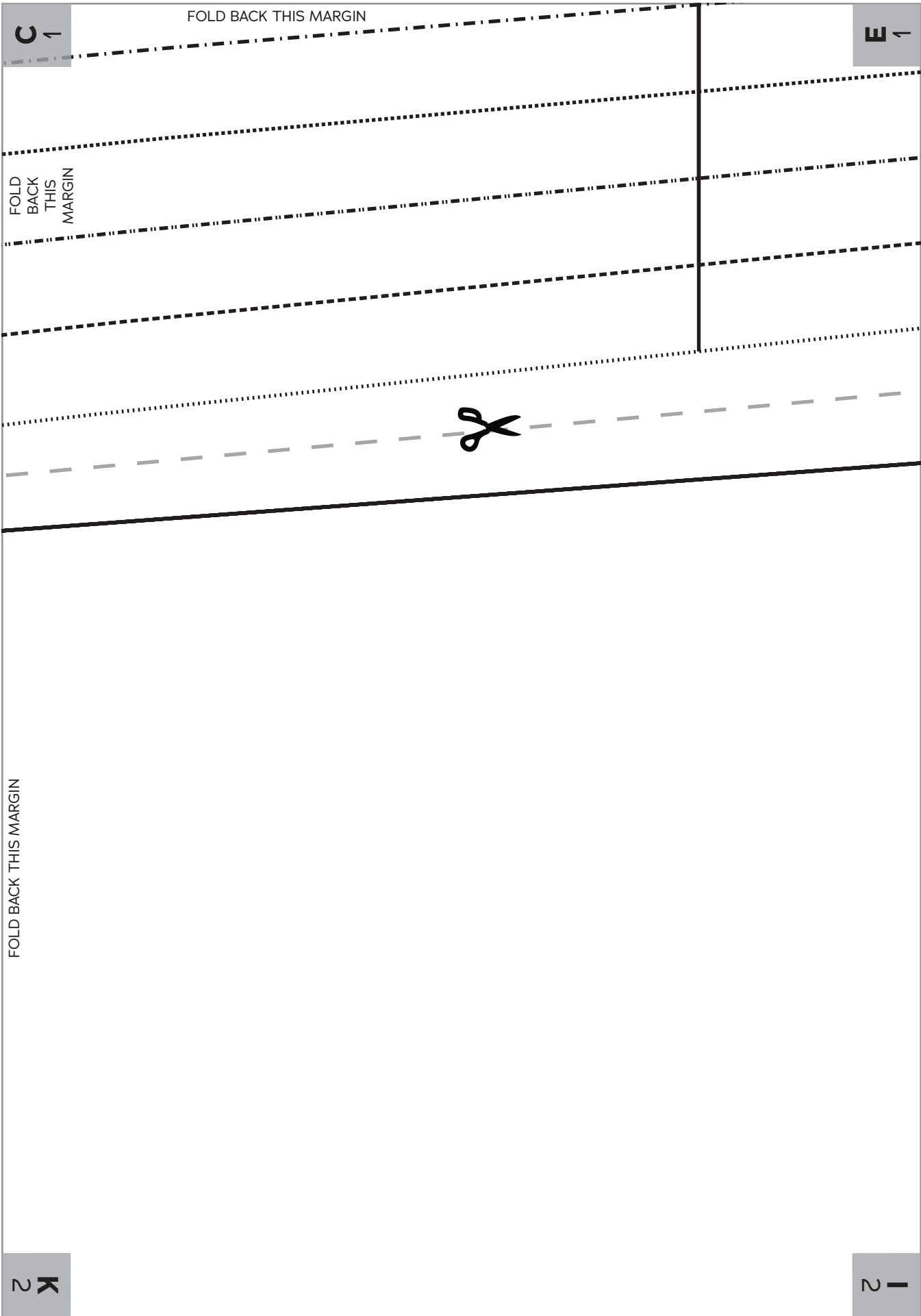
FOLD BACK THIS MARGIN

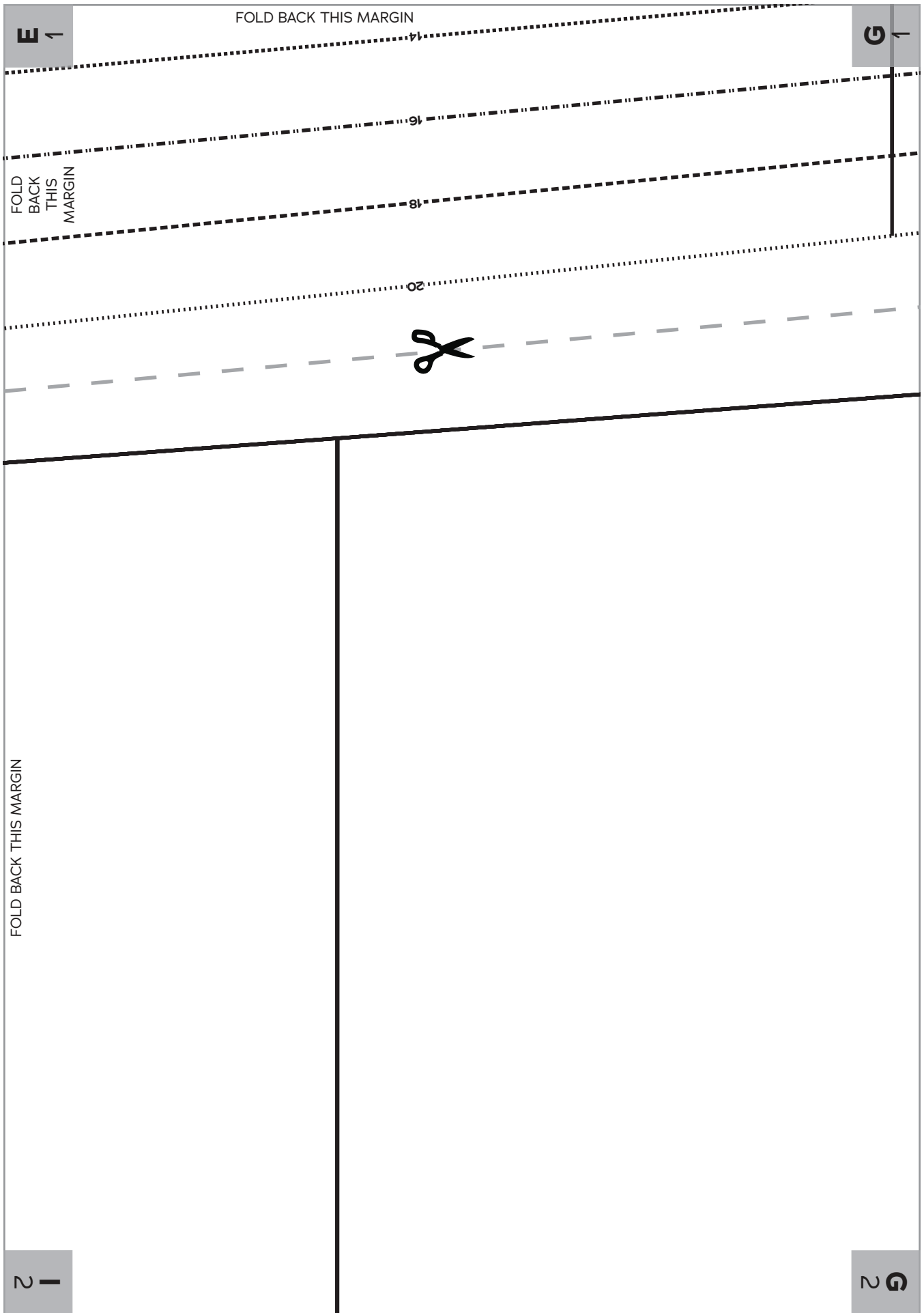
A

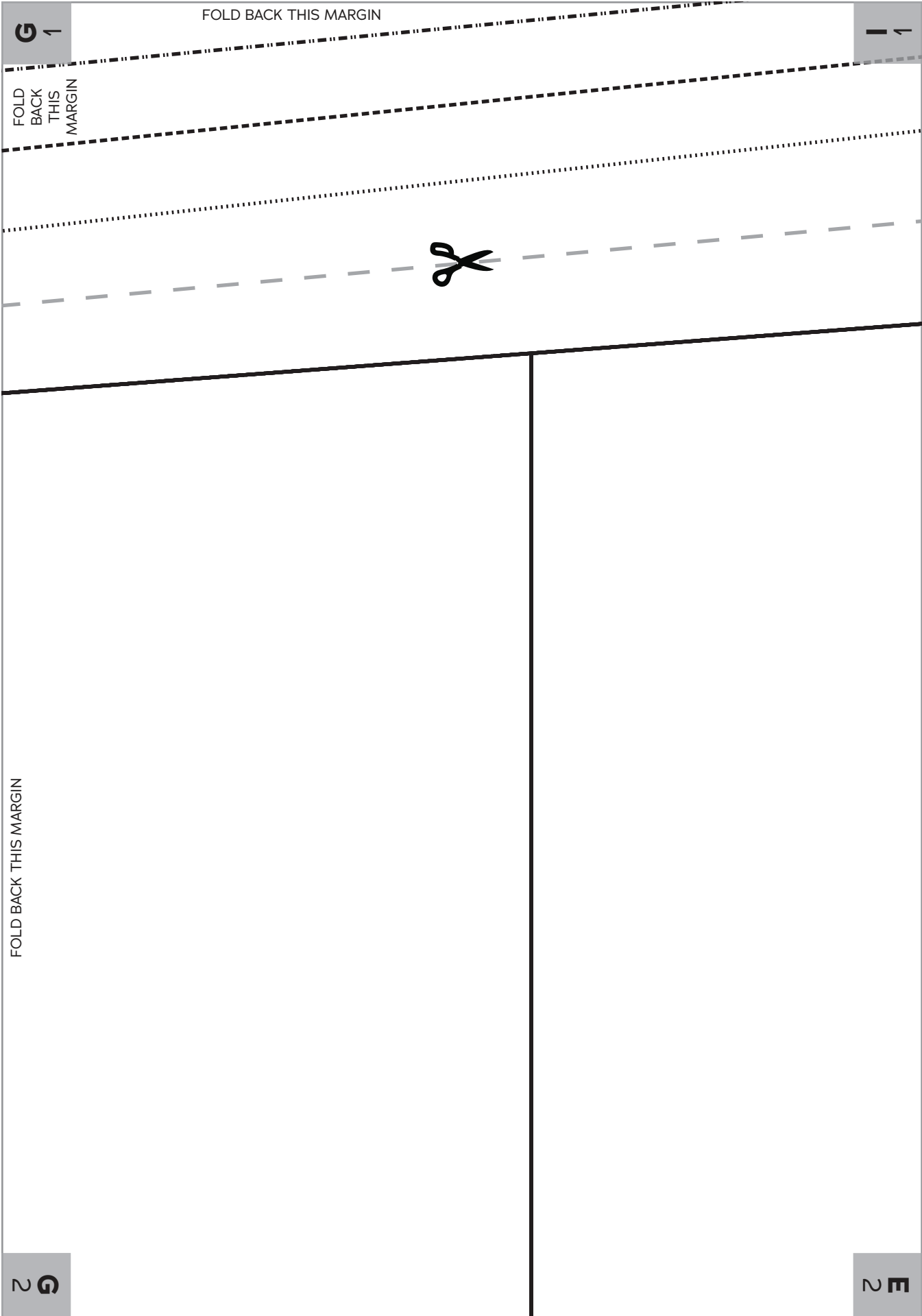


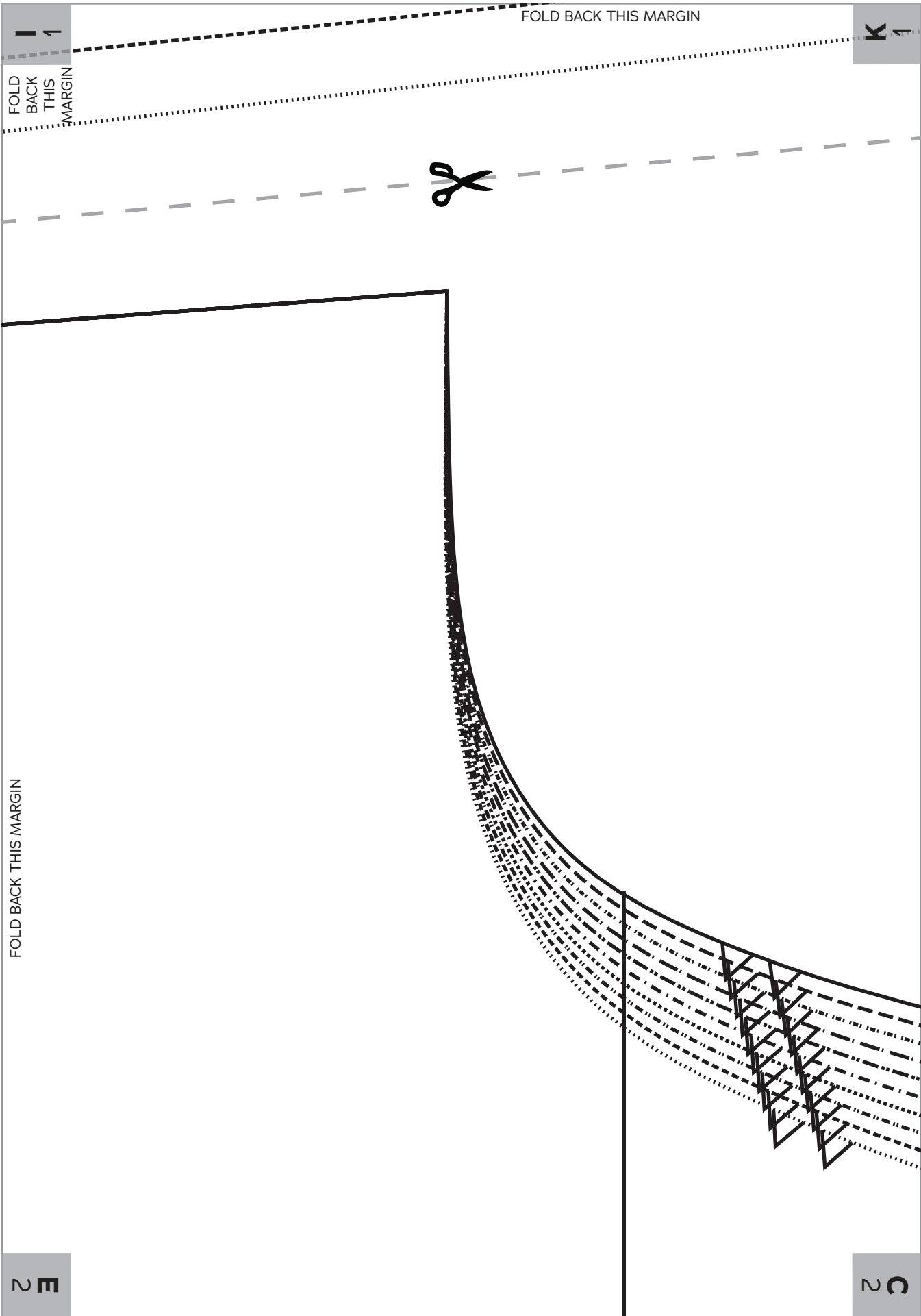
M
2







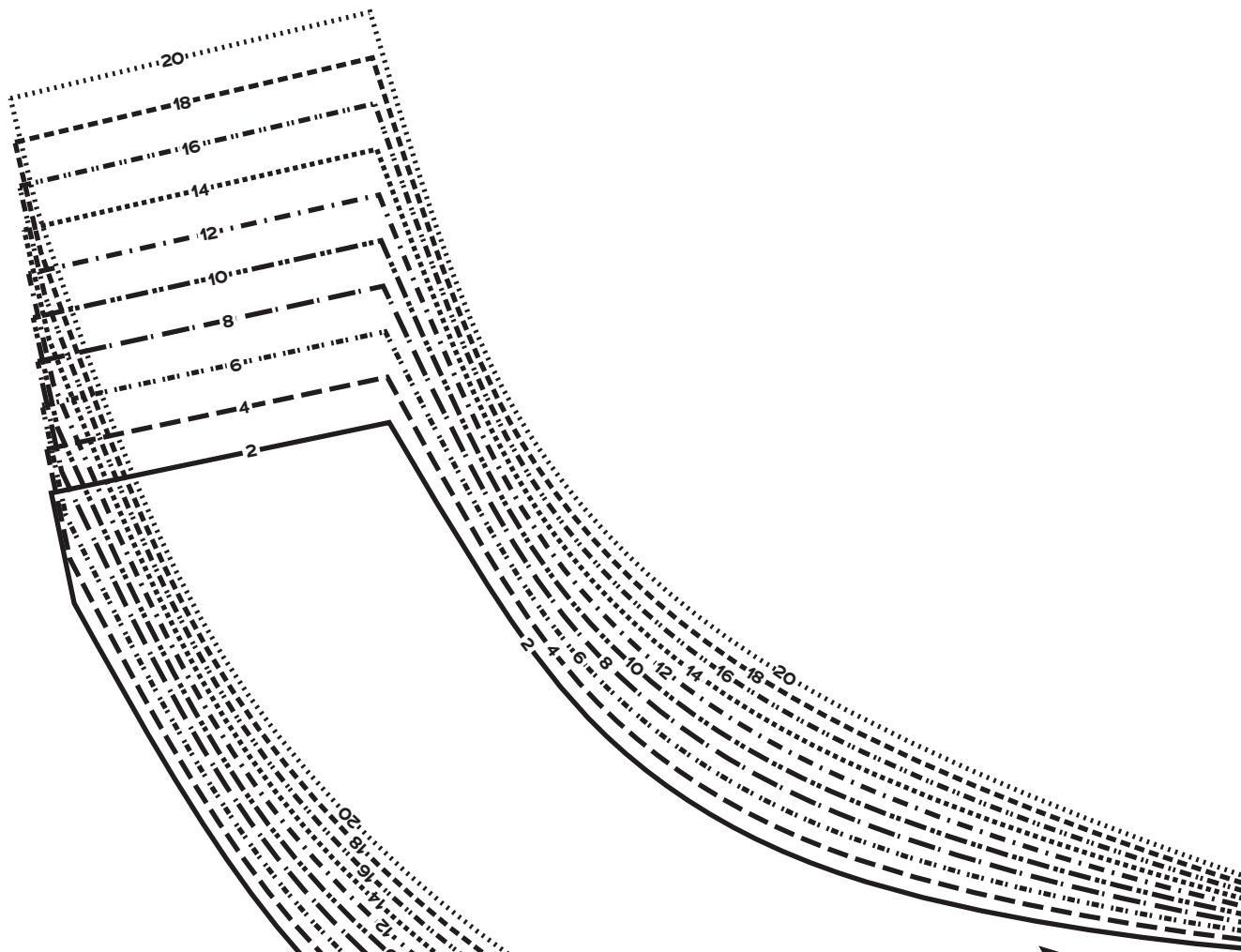




FOLD BACK THIS MARGIN

K
1
FOLD
BACK
THIS
MARGIN

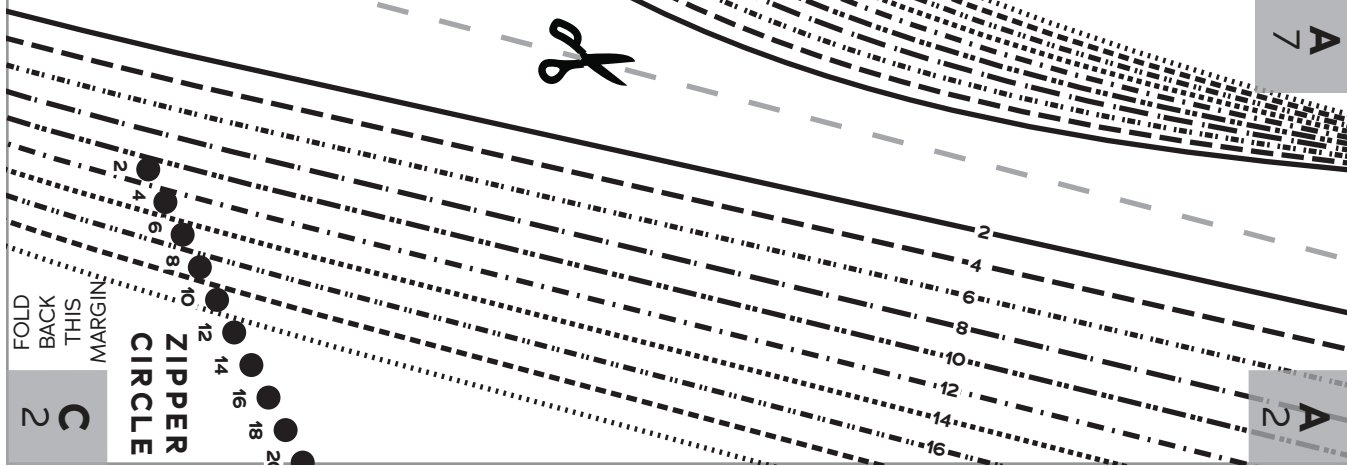
M
1



GRAINLINE



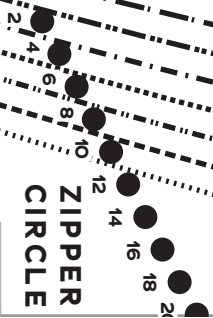
A
7

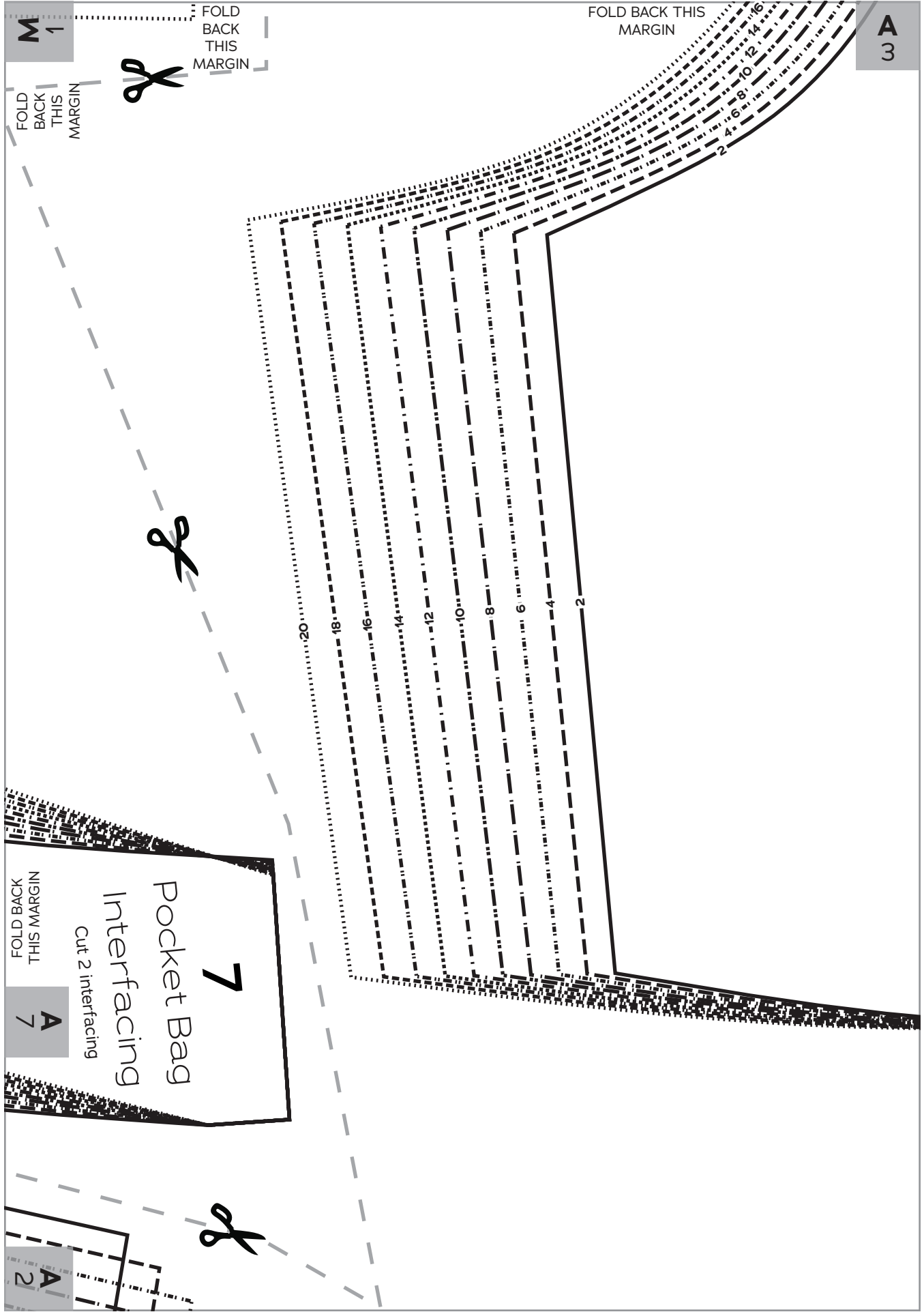


A
2

C
2
FOLD
BACK
THIS
MARGIN

**ZIPPER
CIRCLE**





A
3

FOLD BACK THIS
MARGIN



Lucille
Trousers

3

Pocket
Bag

Cut 2 lining

FOLD BACK THIS MARGIN

GRAINLINE
↓

FOLD BACK THIS MARGIN

M
2

CUFF FOLD LINE

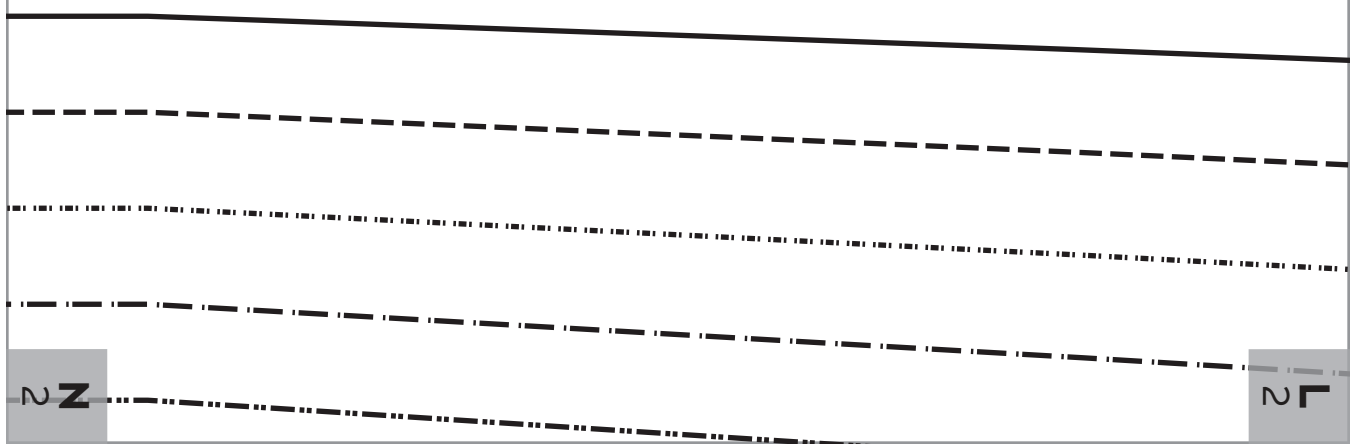
2
Z

FOLD BACK THIS MARGIN

M 2

K 2

FOLD BACK THIS MARGIN



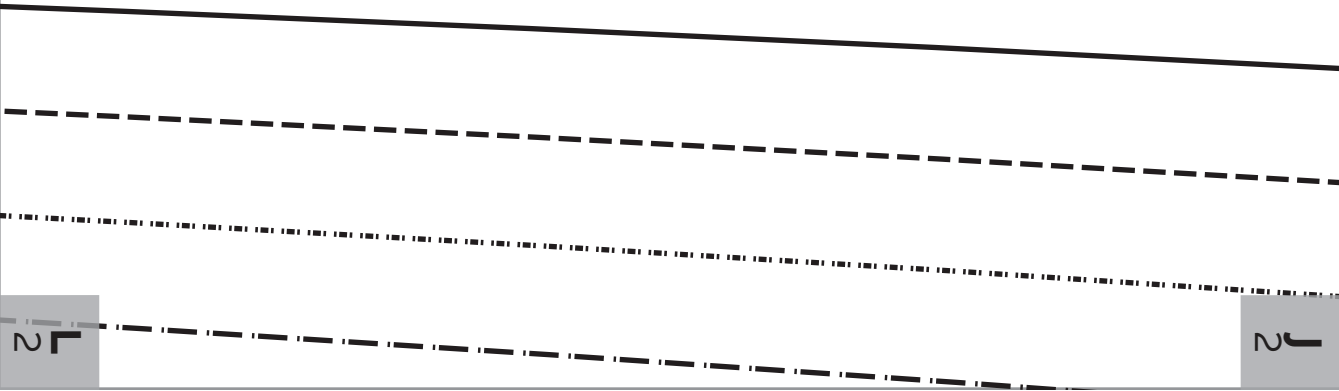
2 K

FOLD BACK THIS MARGIN

2 -



FOLD BACK THIS MARGIN



2 L

2 J

2 |

FOLD BACK THIS MARGIN

2 G

FOLD BACK THIS MARGIN

LENGTH ADJUSTMENT LINE

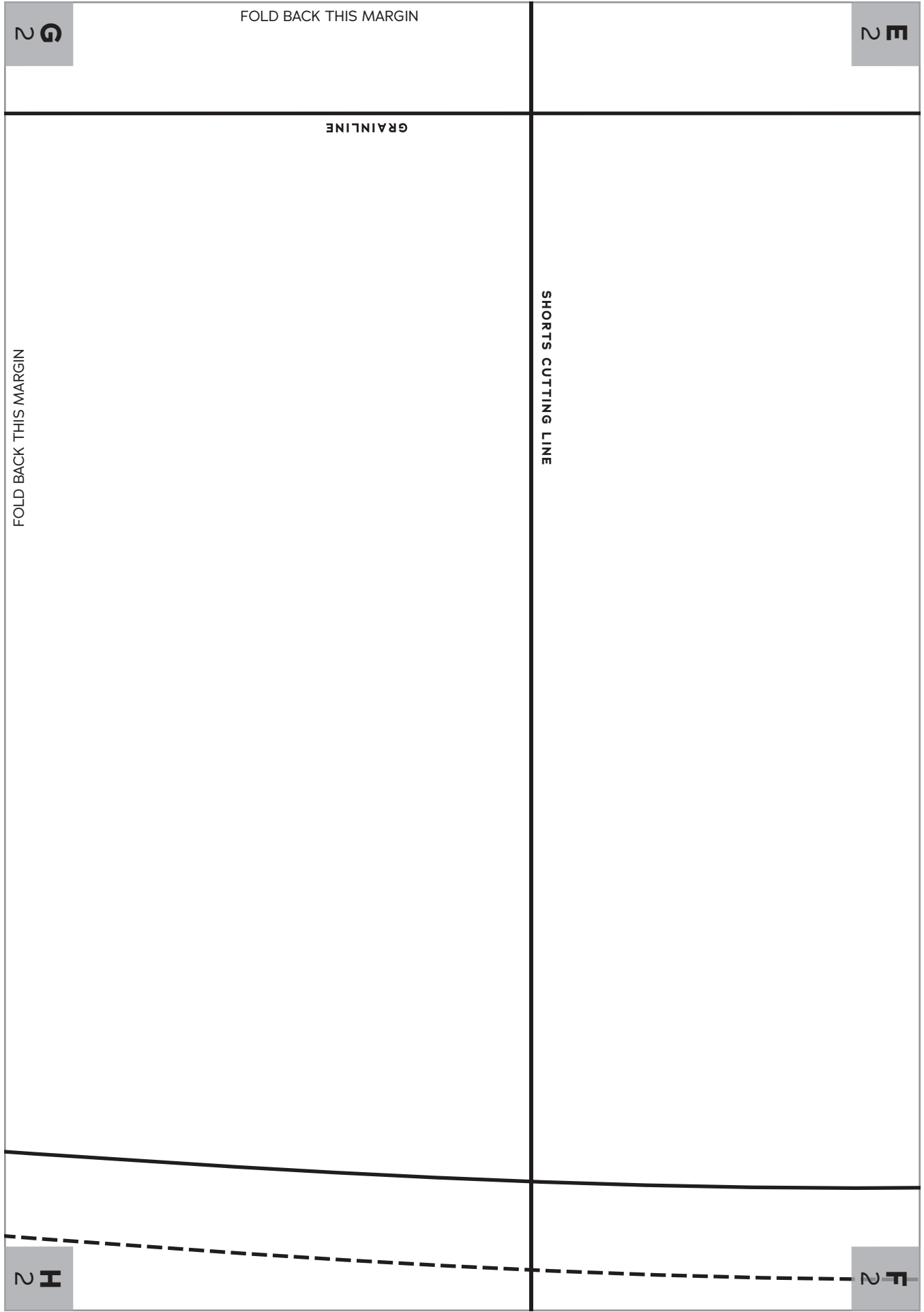
2

4

6

2 |

2 H



FOLD BACK THIS MARGIN

2 G

2 E

GRAINLINE

FOLD BACK THIS MARGIN

SHORTS CUTTING LINE

2 H

2 L

C 2

CROTCH LENGTH ADJUSTMENT LINE



Lucille
Trousers

2

Trouser
Back
Cut 2 fabric

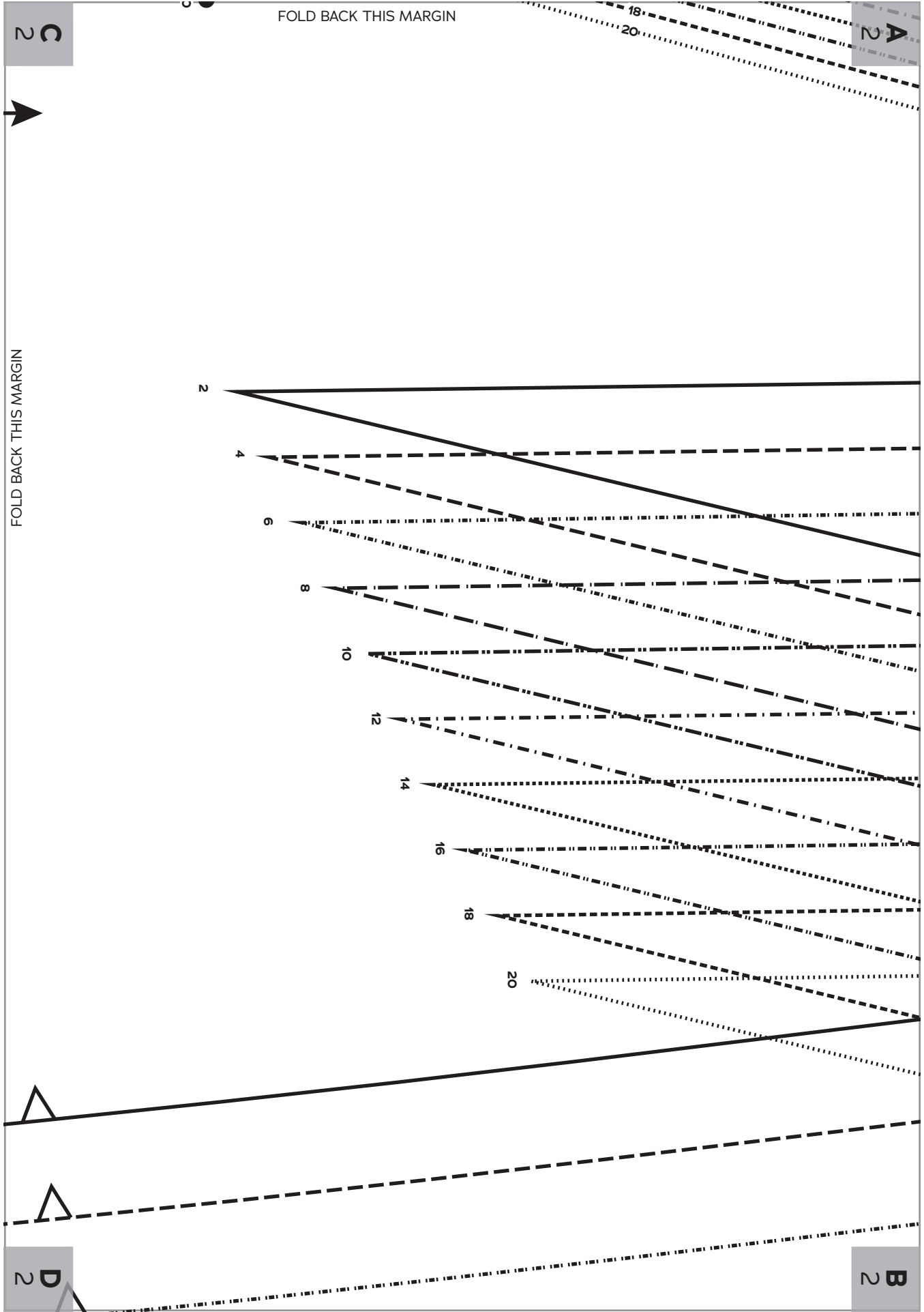
FOLD BACK THIS MARGIN

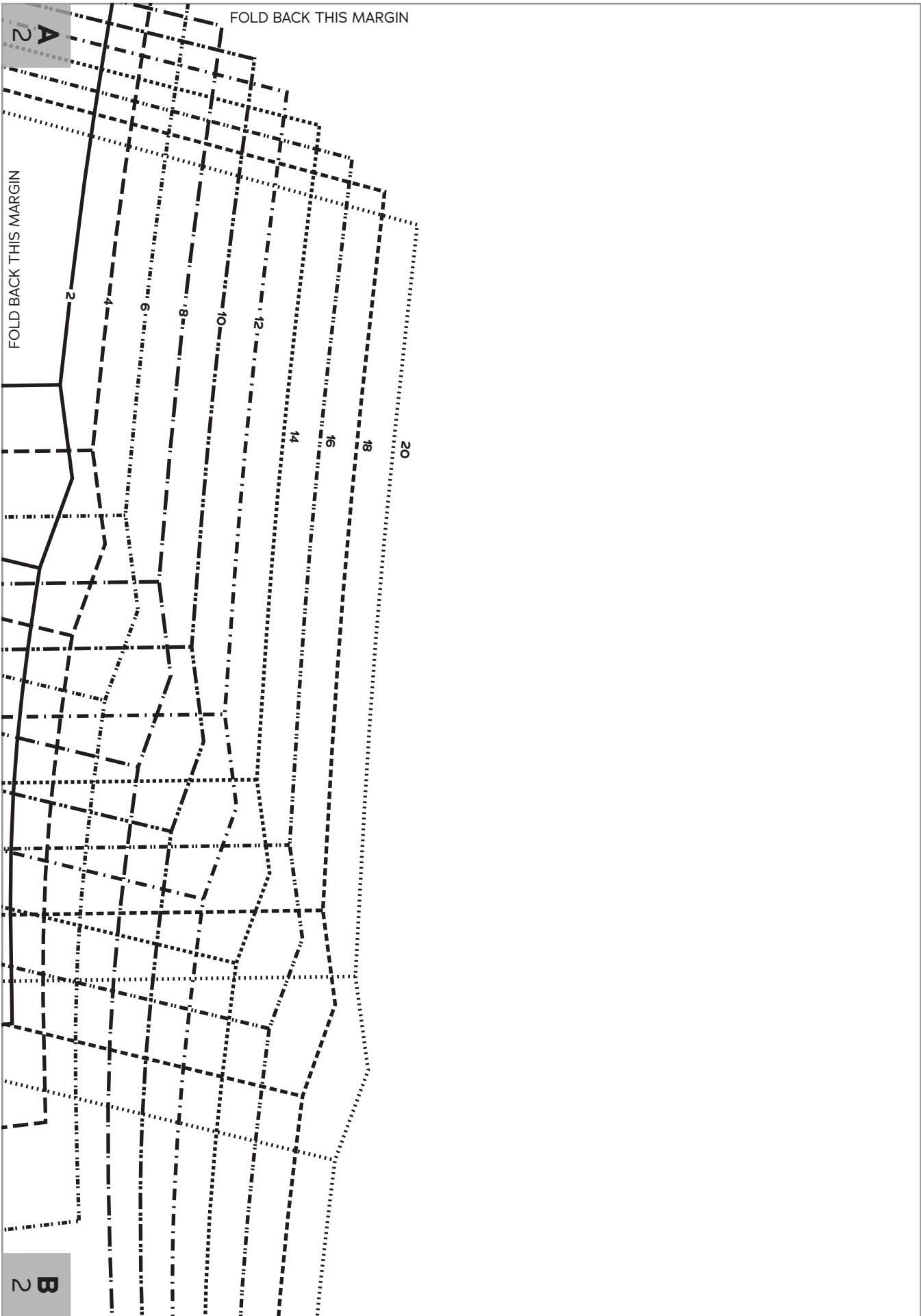
E 2

FOLD BACK THIS MARGIN

D 2

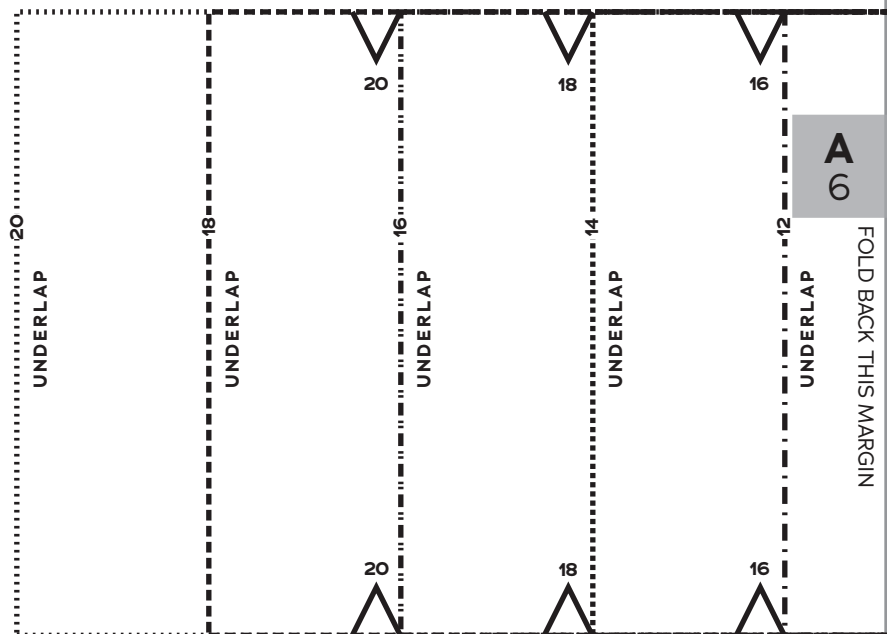
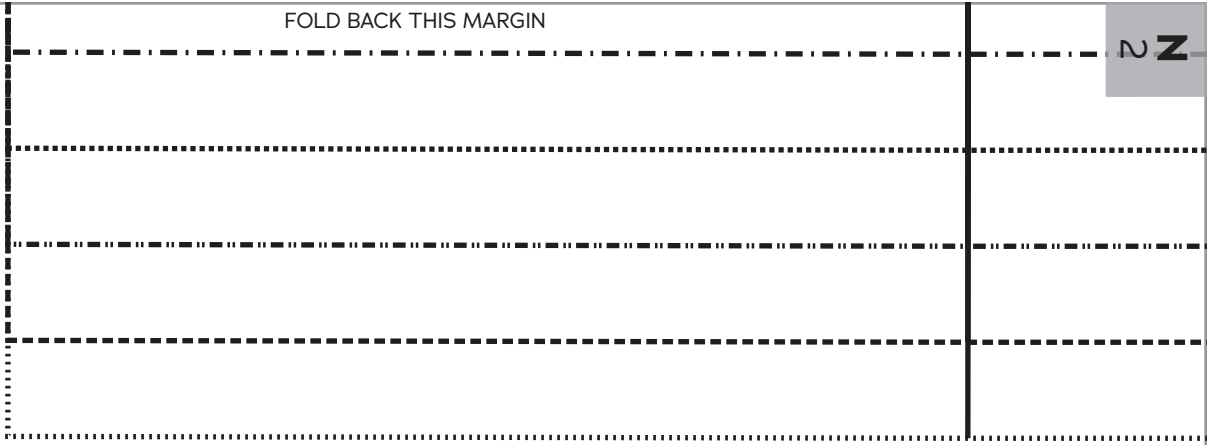
F 2





FOLD BACK THIS MARGIN

2 Z



A 6

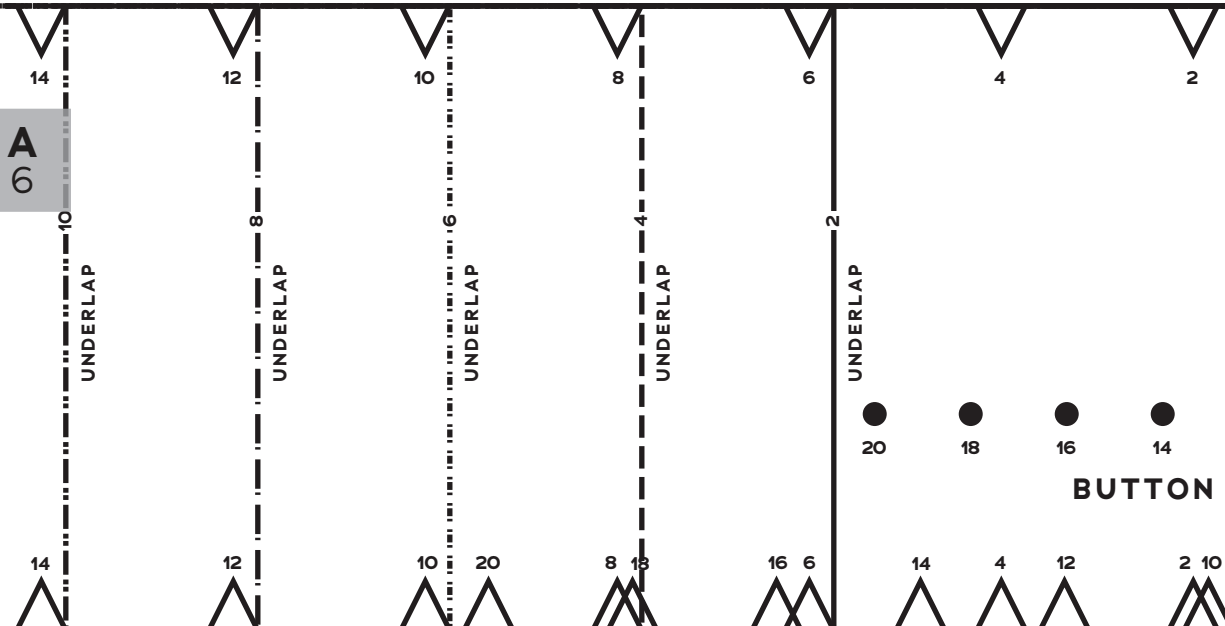
FOLD BACK THIS MARGIN

FOLD BACK THIS MARGIN

2 Z

2 Z

FOLD
BACK
THIS
MARGIN



FOLD BACK THIS MARGIN

2

2

FOLD
BACK
THIS
MARGIN



B
6

C
6

FOLD BACK
THIS MARGIN

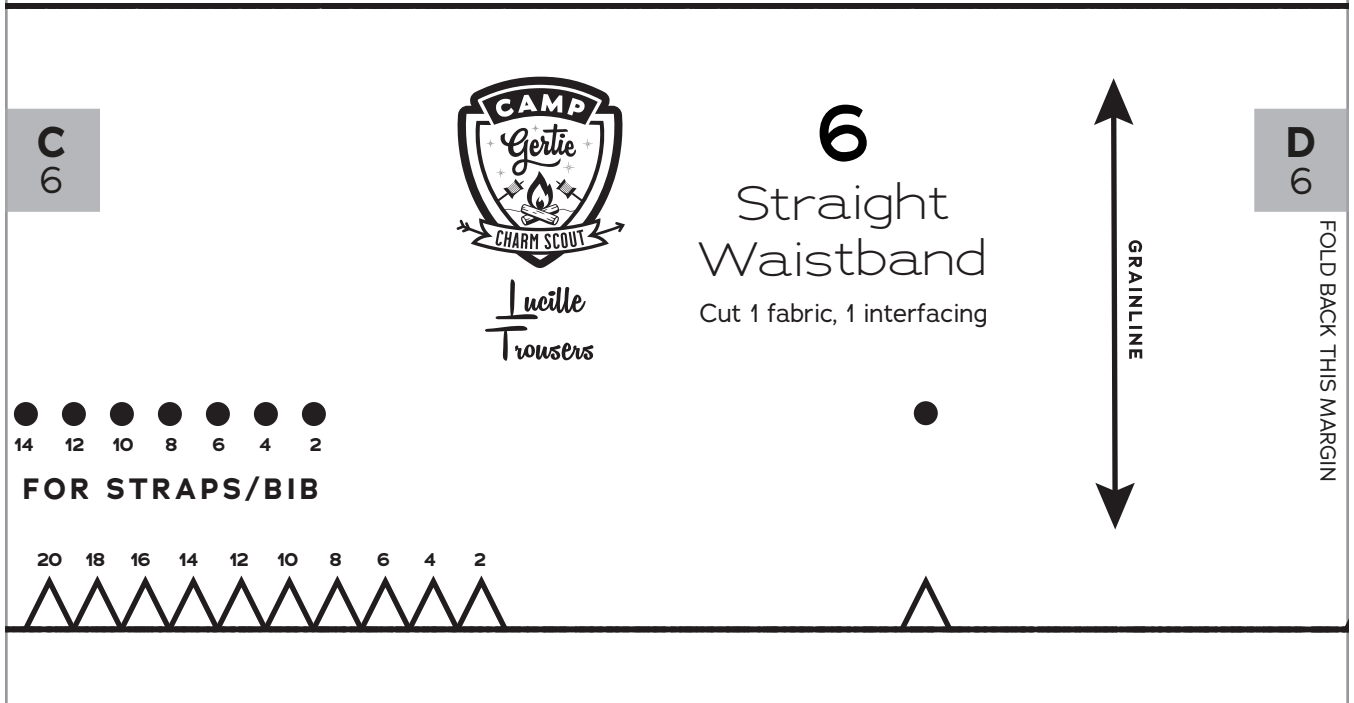
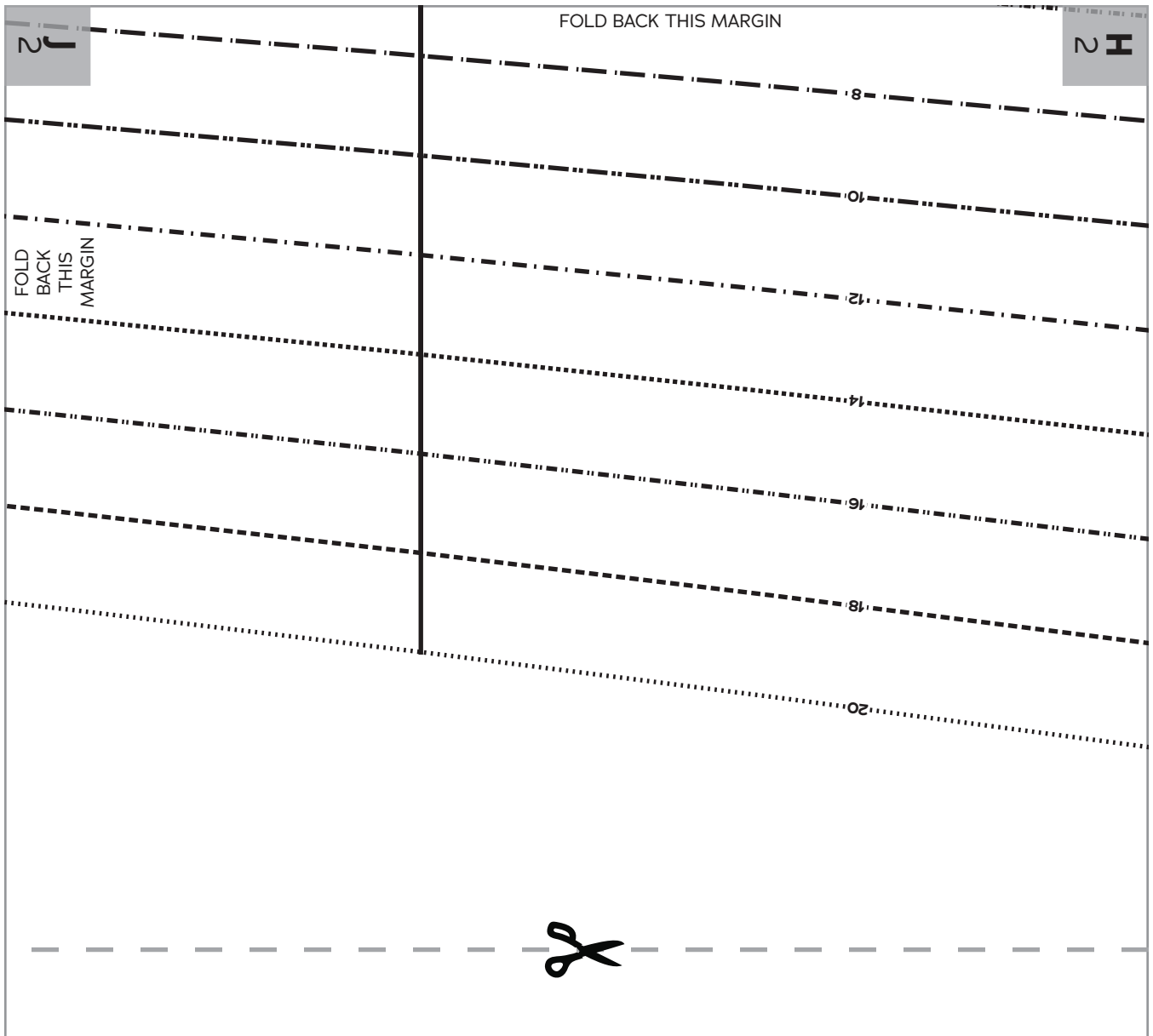
- 10
- 8
- 6
- 4
- 2

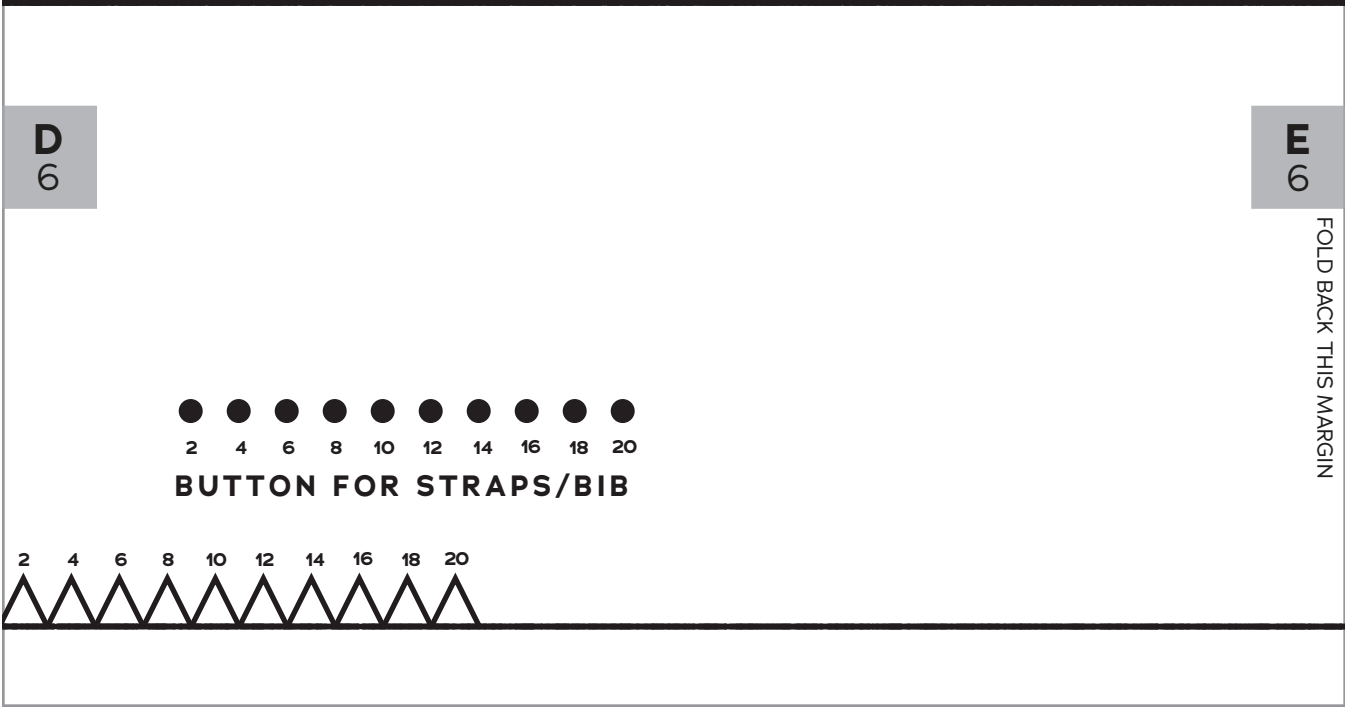
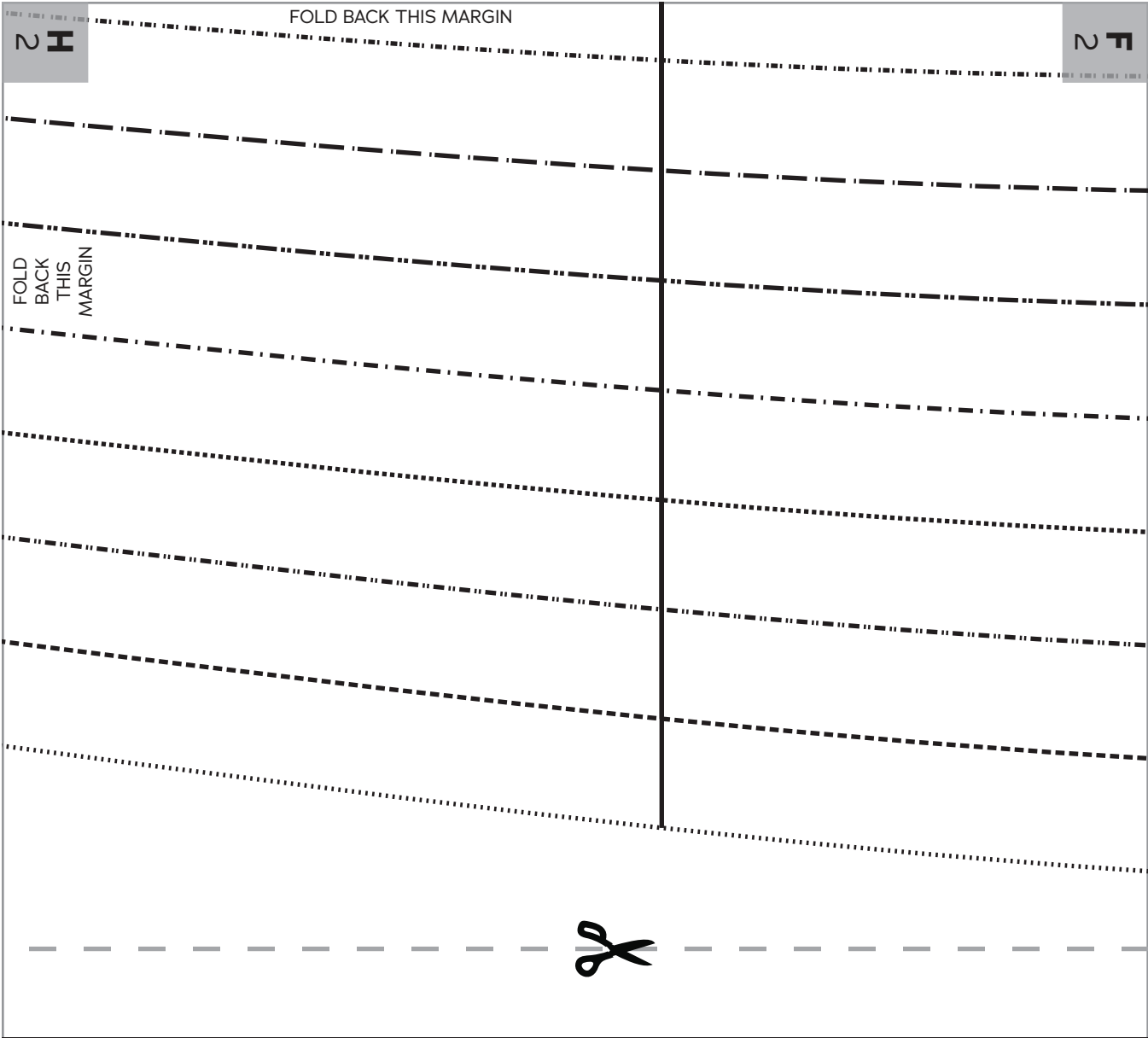
- 20
- 18
- 16

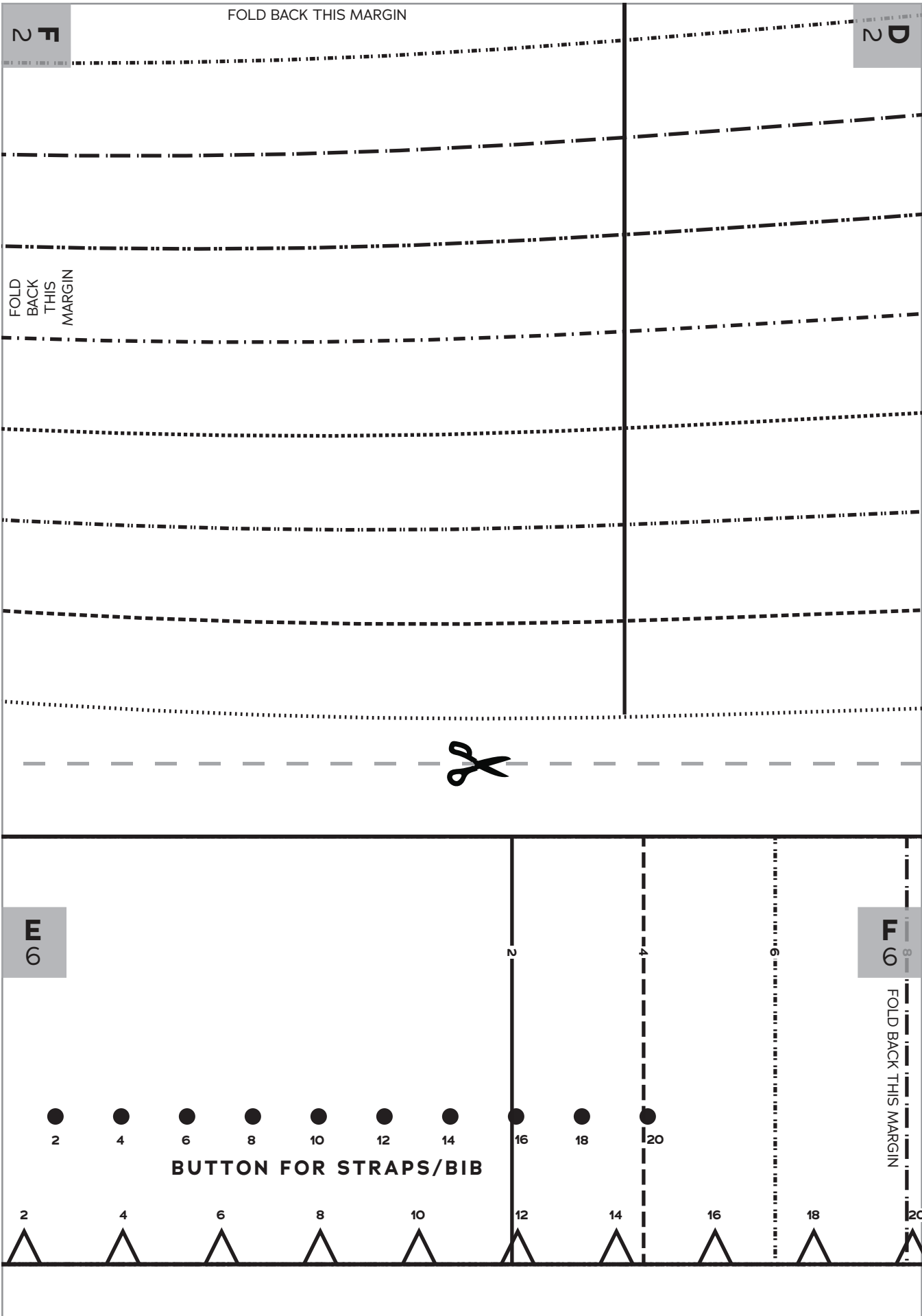
STRAPS/BIB

BUTTON









FOLD BACK THIS MARGIN

D
2

B
2

FOLD
BACK
THIS
MARGIN



F
6

10

12

14

16

18

20

B
2

FOLD BACK THIS MARGIN

FOLD
BACK
THIS
MARGIN

