

Society

DRESS

Sizes 18-34
with cup sizes A-H

5/8 inch (1.5 cm) seam allowances
are included on all pattern pieces.

PAGE 1 OF 6

PATTERN PIECE INDEX
3 Midriff Front
7 Short Pleated Sleeve
10 Knee-Length Skirt Front



**SIZE 18-34
PATTERN
SIZE KEY**
18 - - - - -
20 - - - - -
22 - - - - -
24 - - - - -
26 - - - - -
28 - - - - -
30 - - - - -
32 - - - - -
34 - - - - -

SYMBOL KEY
grainline arrow
match point/
placement mark

© 2023 Charm Patterns
by Serice, Contributor
and Commercial Use
Prohibited

1 in
test
square

2 cm
test
square

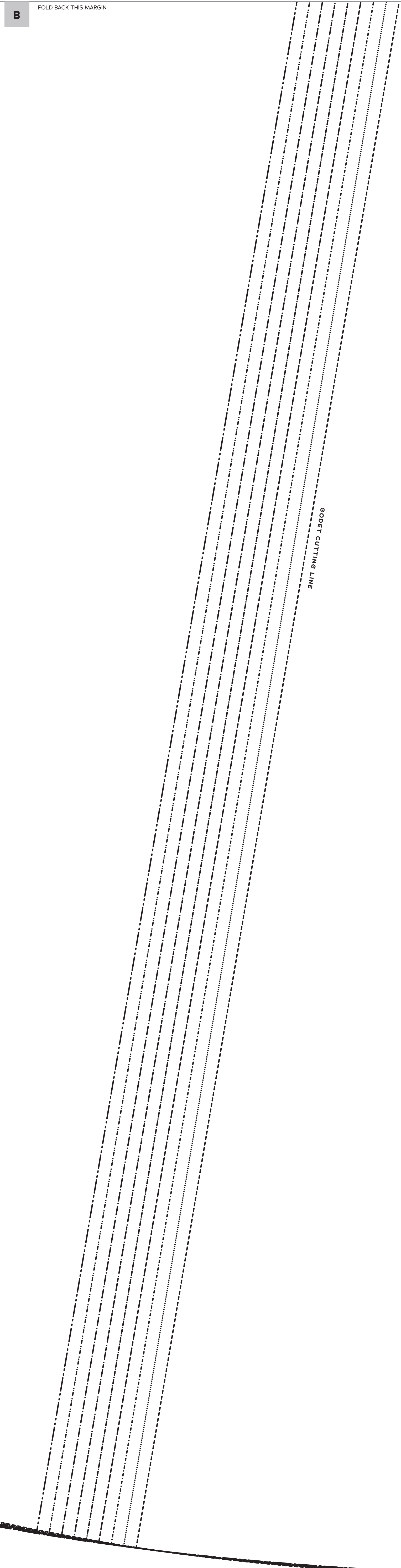
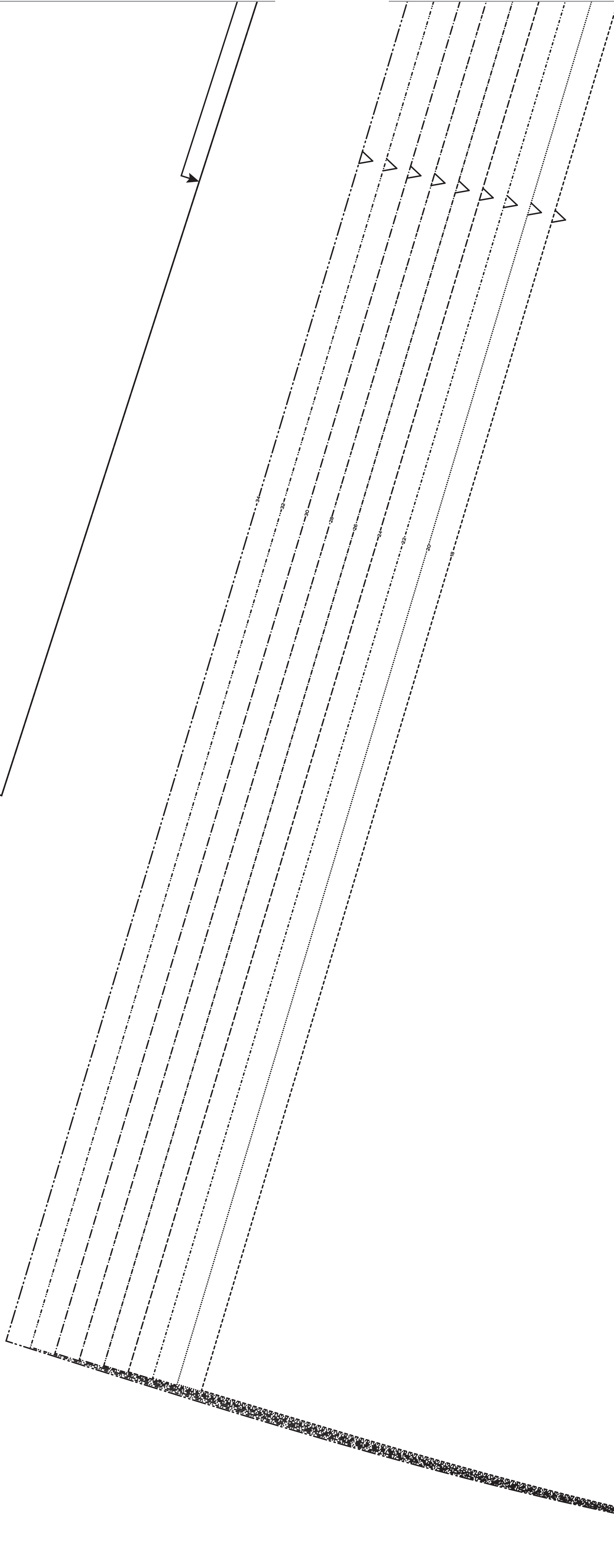
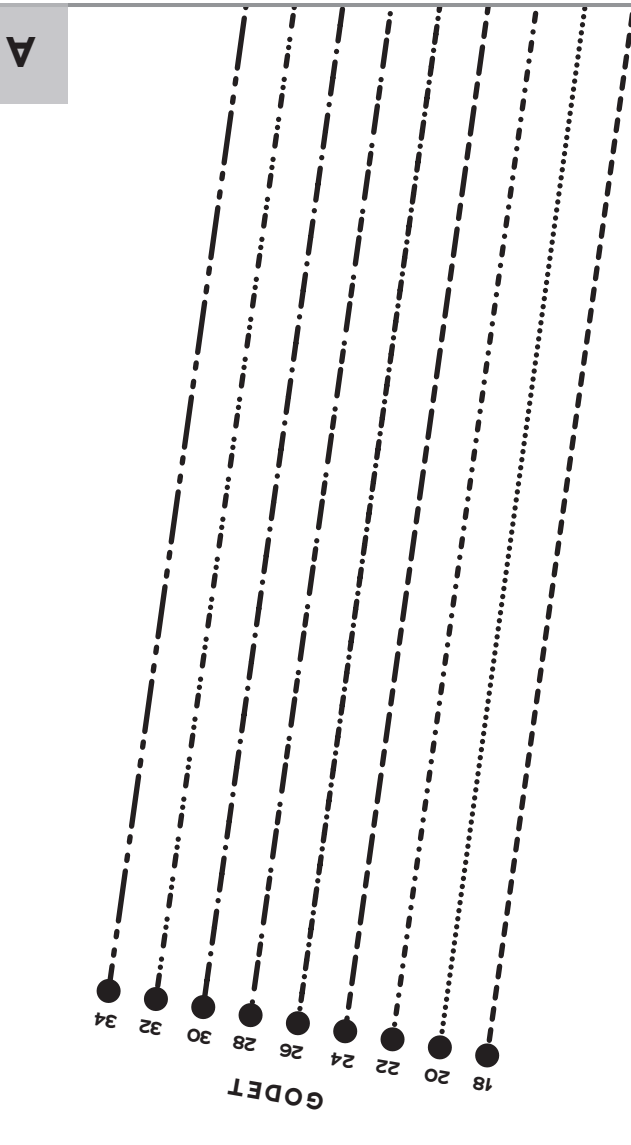
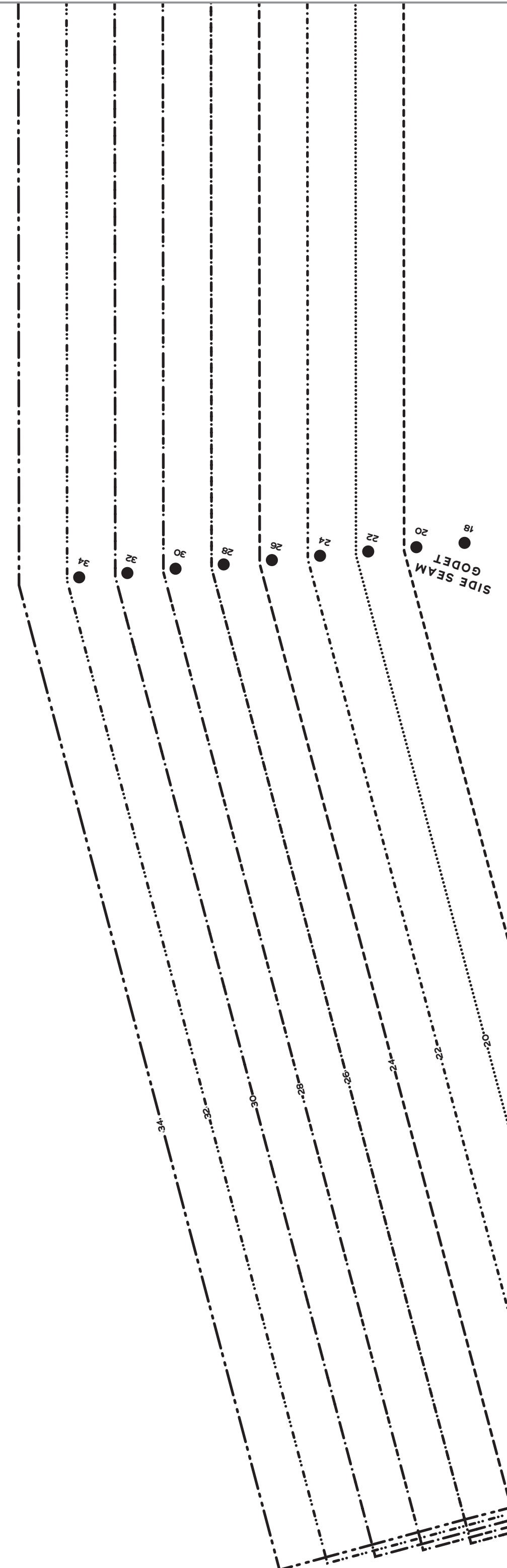
Society of Charm
Society
DRESS
SIZES 18-34
10
Knee-Length
Skirt Front
Cut 1 fabric on fold

Society of Charm
Society
DRESS
SIZES 18-34
7
Short Pleated
Sleeve
Cut 2 fabric

PLEAT

Society of Charm
Society
DRESS
SIZES 18-34
3
Midriff
Front
Cut 1 fabric on fold,
1 power mesh on fold

9 3/4"



Society
of Charm
Society
DRESS
SIZES 18-34
12
Floor-Length
Skirt Front
Cut 1 fabric on fold

Society
DRESS
Sizes 18-34
with cup sizes A-H

5/8 inch (1.5 cm) seam allowances
are included on all pattern pieces.

PAGE 4 OF 6

PATTERN PIECE INDEX
6 Bishop Sleeve Cuff
12 Floor-Length Skirt Front
13 Floor-Length Skirt Back (cont'd)

Society
of Charm

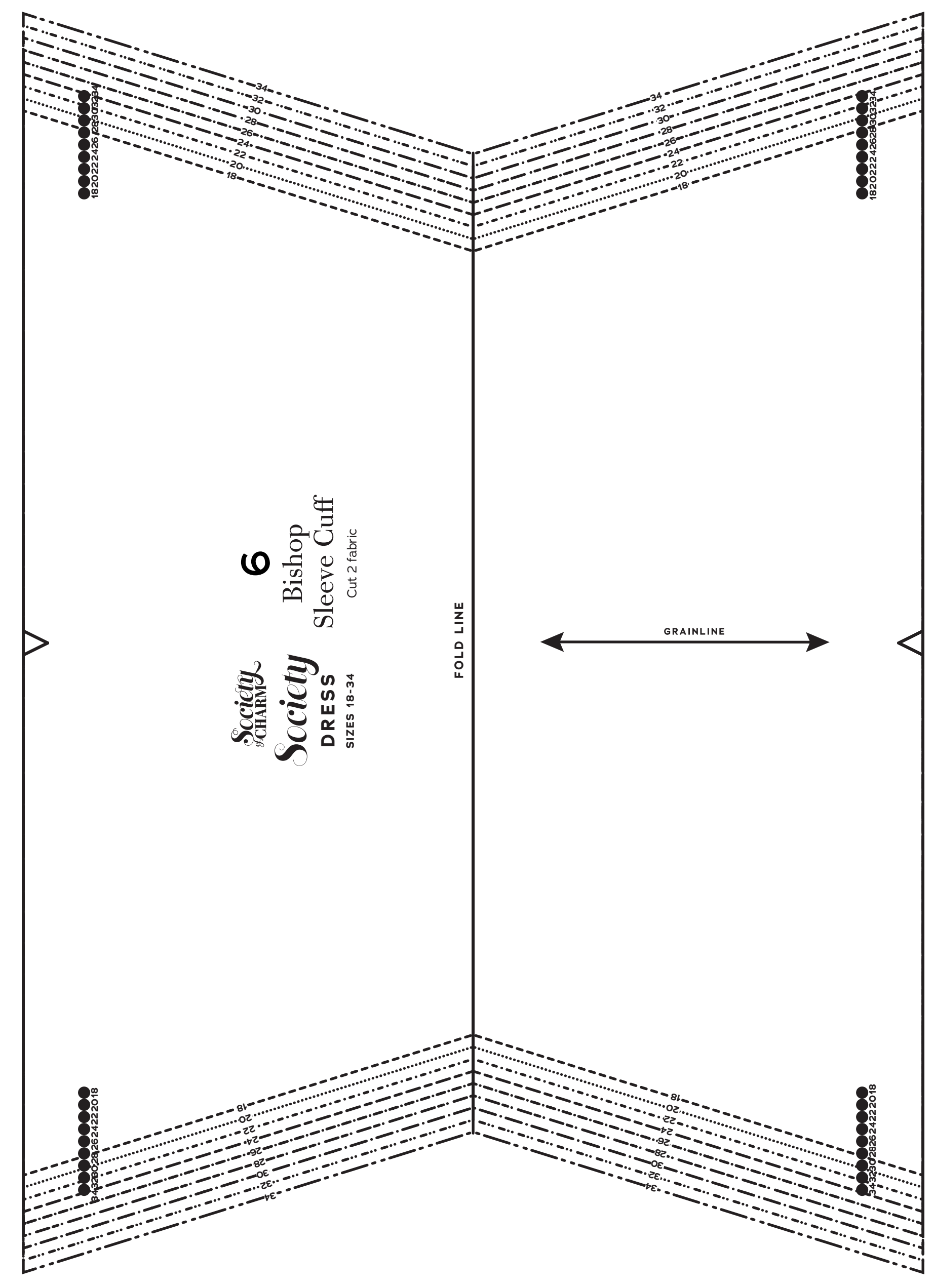
SIZE 18-34
PATTERN
SIZE KEY

SYMBOL KEY
grainline arrow
match point/
placement mark

1 in
test
square

2 cm
test
square

© 2023 Charm Patterns
by Genie. Distribution
and Commercial Use
Prohibited.



Society of Charm
 DRESS
 SIZES 18-34
 14
 Floor-Length
 Skirt Godet
 Cut 6 fabric

Society DRESS
 Sizes 18-34
 with cup sizes A-H

5/8 inch (1.5 cm) seam allowances are included on all pattern pieces.

PAGE 5 OF 6

PATTERN PIECE INDEX
 2 Bodice Back
 5 Bishop Sleeve
 14 Floor-Length Skirt Godet

Society of Charm

SIZE 18-34
 PATTERN
 SIZE KEY

SYMBOL KEY
 grainline arrow
 match point/
 placement mark

1 in test square 2 cm test square

© 2023 Charm Patterns by Gerie. Distribution and Commercial Use Prohibited.

Society of Charm
Society DRESS
 SIZES 18-34
 2
 Bodice Back
 Cut 1 fabric on fold

Society of Charm
Society DRESS
 SIZES 18-34
 5
 Bishop Sleeve
 Cut 2 fabric

ALIGN NOTCH TO SHOULDER SEAM

GRAINLINE

GATHER BETWEEN CIRCLES

GATHER BETWEEN CIRCLES

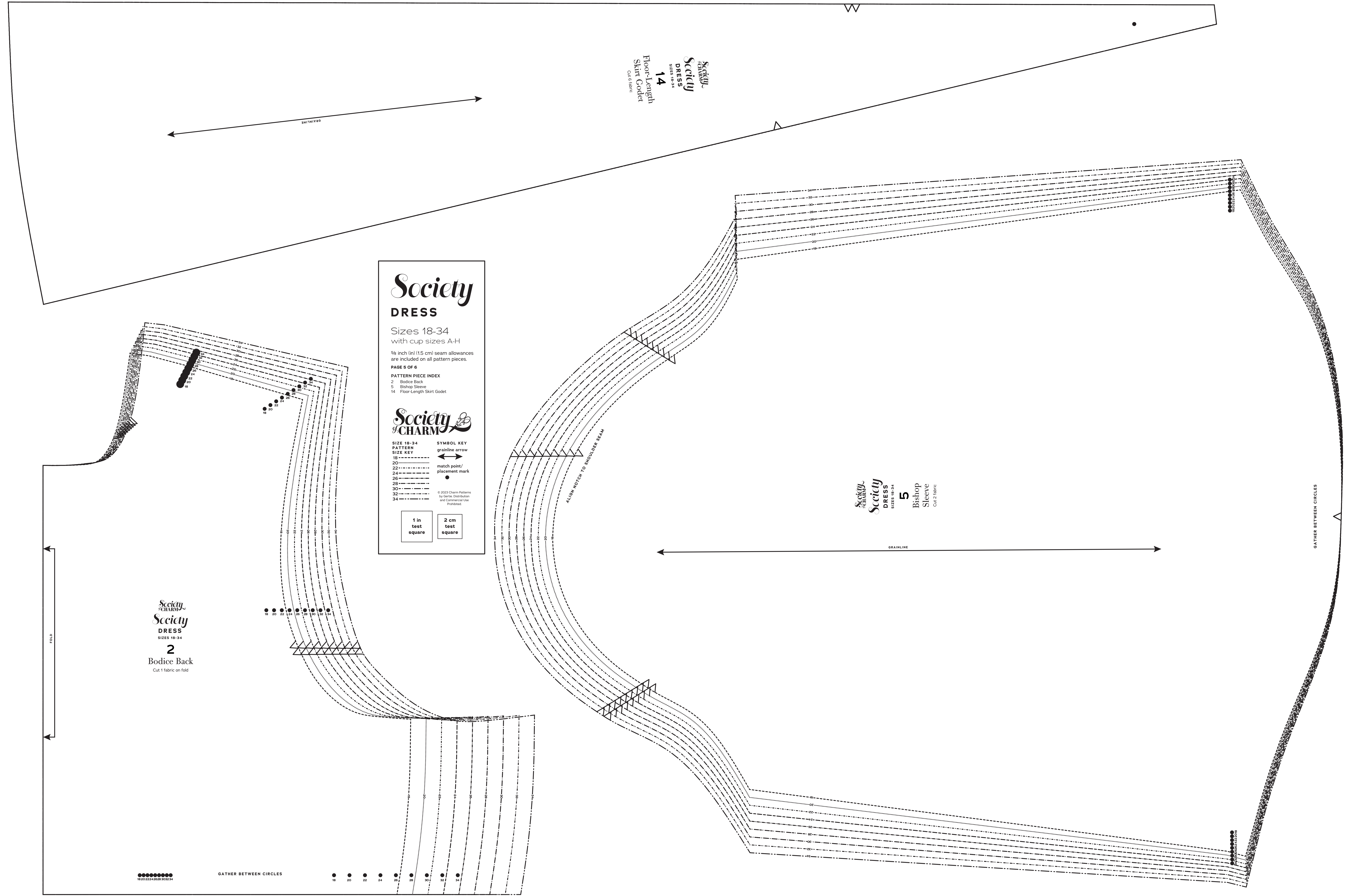
18 20 22 24 26 28 30 32 34

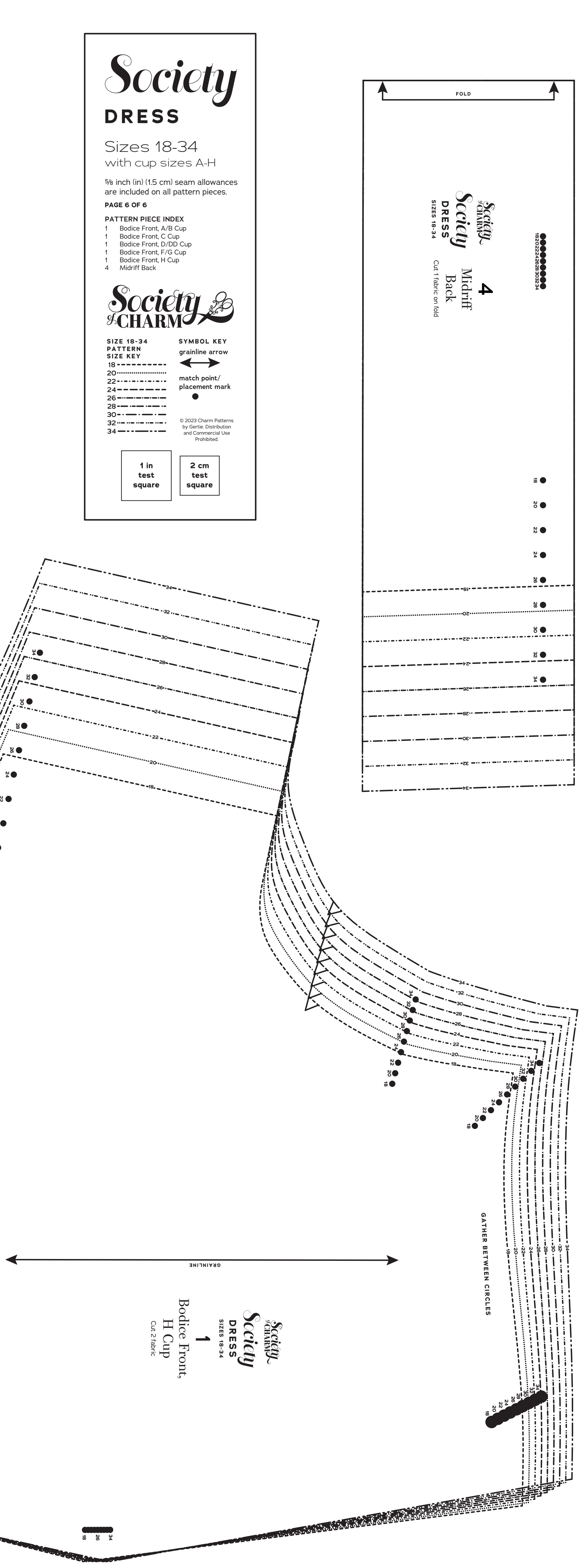
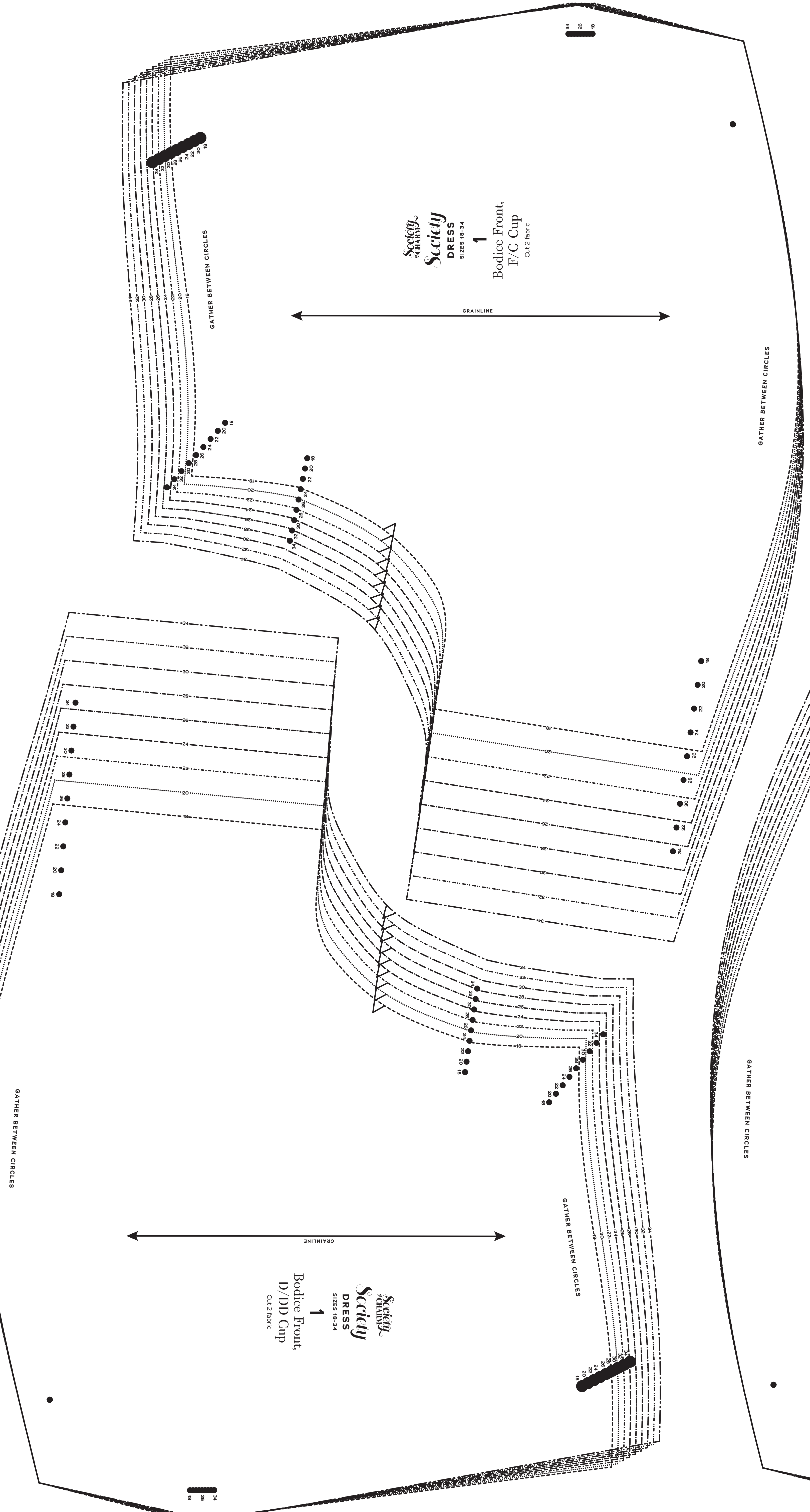
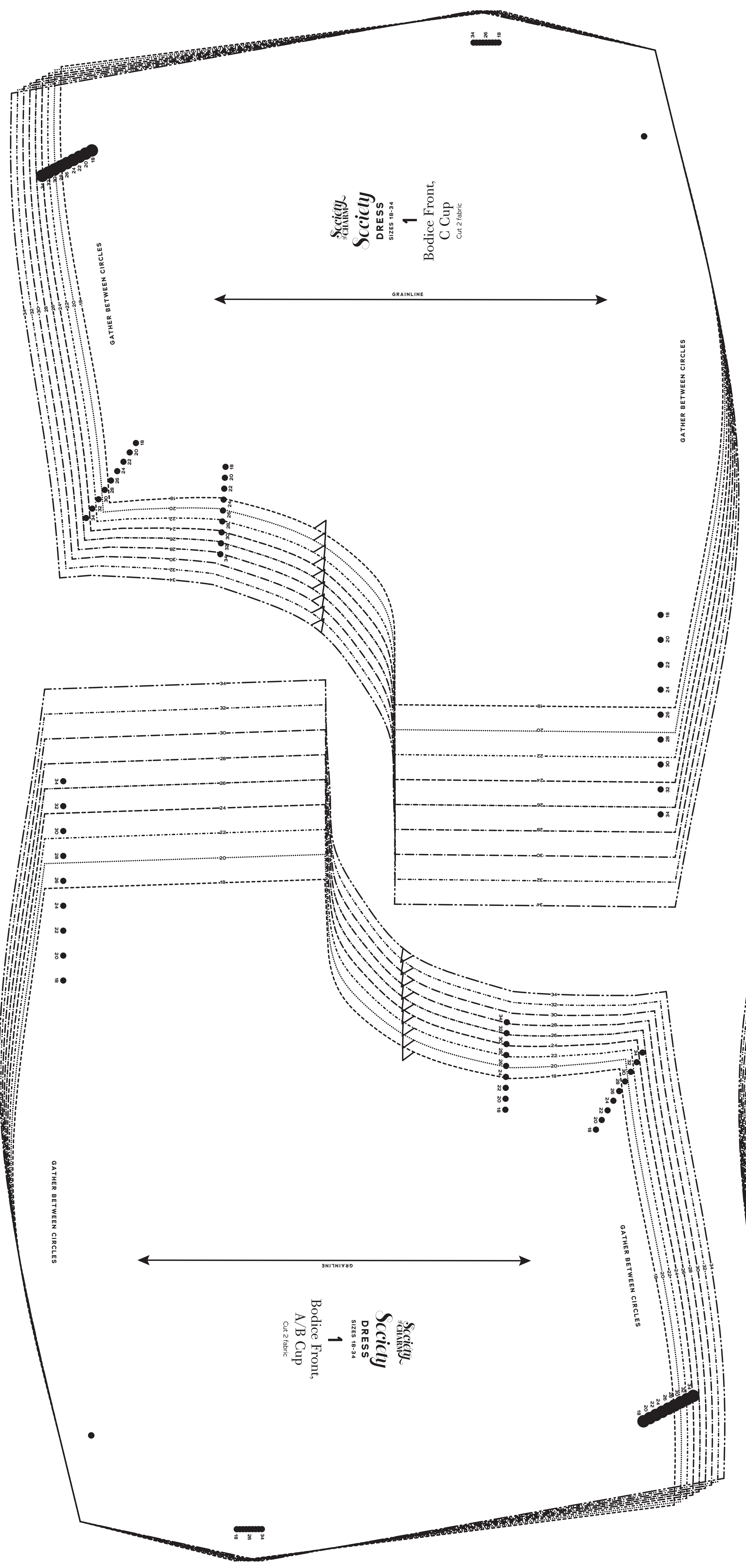
18 20 22 24 26 28 30 32 34

18 20 22 24 26 28 30 32 34

PLD

SHIRRED





Society DRESS

Sizes 18-34
with cup sizes A-H

5/8 inch (1.5 cm) seam allowances are included on all pattern pieces.

PAGE 6 OF 6

PATTERN PIECE INDEX

- 1 Bodice Front, A/B Cup
- 1 Bodice Front, C Cup
- 1 Bodice Front, D/DD Cup
- 1 Bodice Front, F/G Cup
- 1 Bodice Front, H Cup
- 4 Midriff Back

Society of Charm

SIZE 18-34 PATTERN SIZE KEY

- 18 - - - - -
- 20 - - - - -
- 22 - - - - -
- 24 - - - - -
- 26 - - - - -
- 28 - - - - -
- 30 - - - - -
- 32 - - - - -
- 34 - - - - -

SYMBOL KEY

- grainline arrow
- match point/ placement mark

© 2023 Charm Patterns by Geris Distribution and Commercial Use Prohibited.

1 in test square 2 cm test square

