



**Scion of darkness beige  
skin  
PDF tutorial**



Before we start painting the miniature, we locate the light reflections on the skin, By taking a picture of it under our desk lamp. I primed it in Chaos black as it has a great shine to it. I have added a guide for how to locate light reflections in the patreon post.

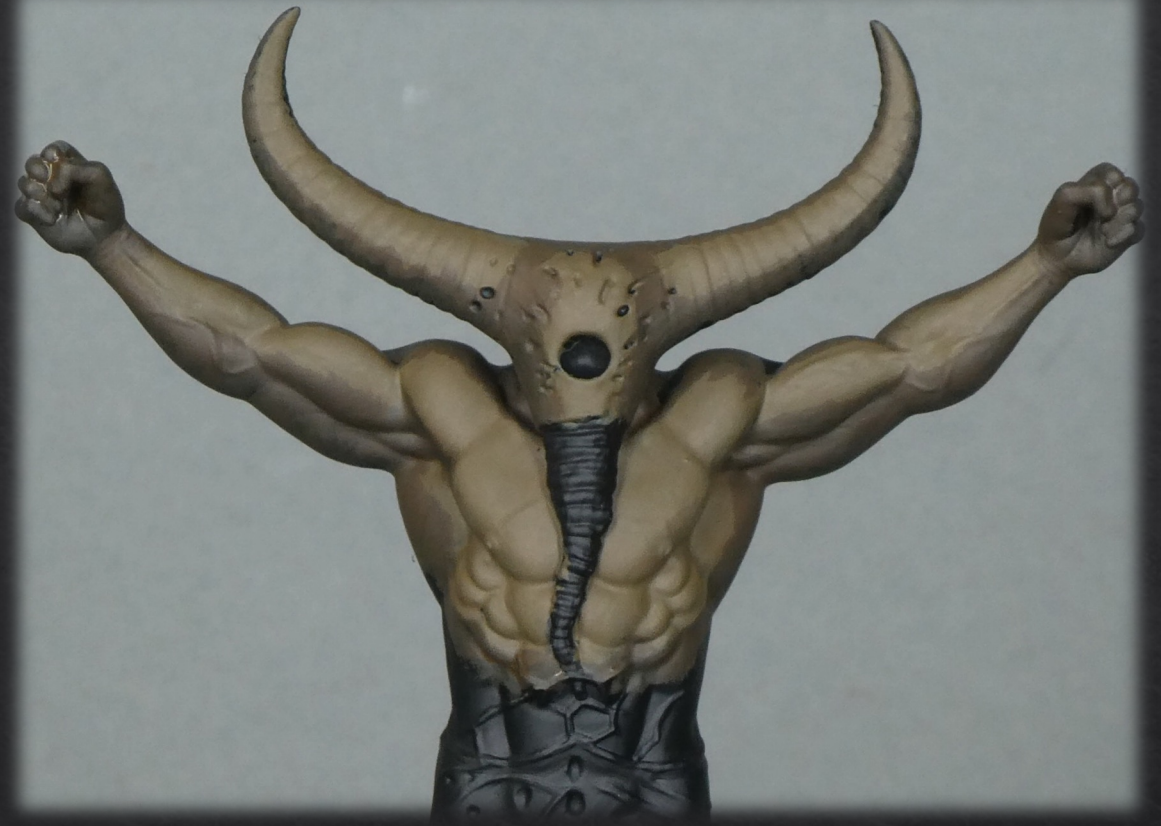
# Paints used :

- British Khaki (AK interactive)
- Ice yellow (Vallejo mc)
- Rhinox hide
- Doombull brown





We start by basecoating all the areas, that catches most light (see reference photo), with a 3:1 mix of british khaki & rhinox hide.



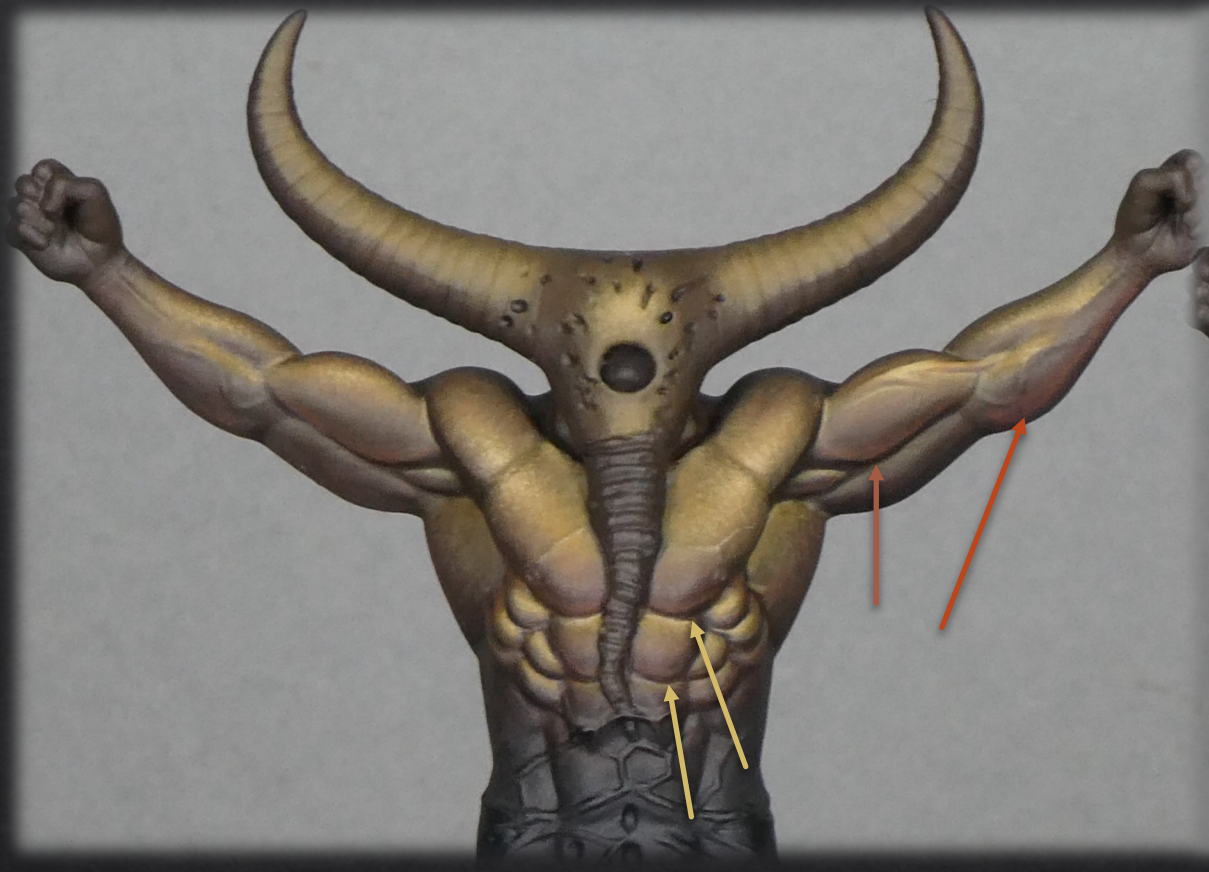
We now basecoat the remaining areas, by adding 1,5 part more of rhinox hide to the previous mix.



We now add 1 part of british khaki to the previous mix, & glaze in the center of where the two basecoat meets, in order to make these two different mix, blend into each other. Add 2 parts of water.

We furthermore take pure rhinox hide & shade in the deepest recesses

We now work on the light reflections. We start by glazing the frame of the light reflections, with pure british khaki to the basecoat mix. Add 2 parts of water. We furthermore add  $\frac{1}{4}$  part of ice yellow to the british khaki, & glaze towards the center of the light reflections.

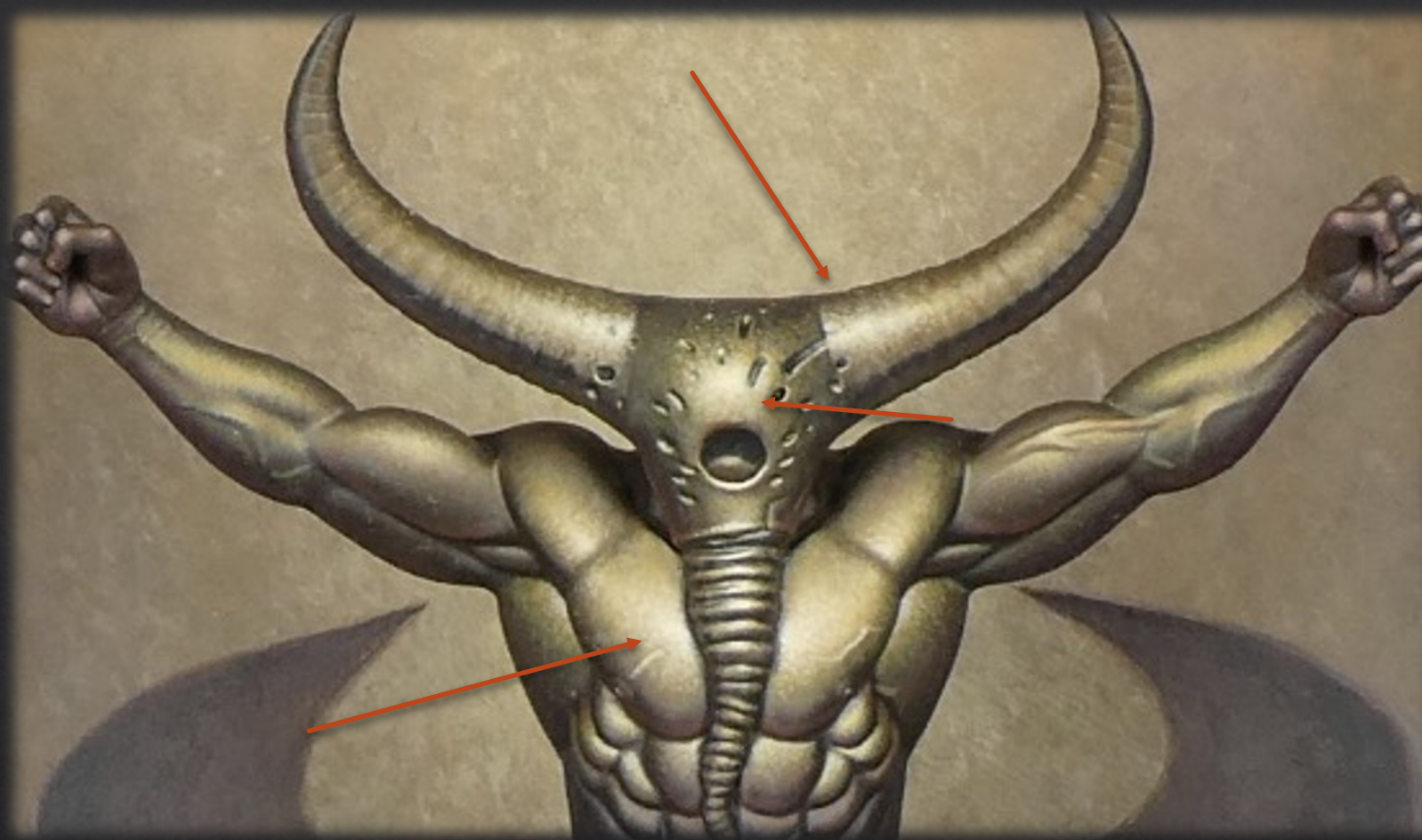


We now add the final  $\frac{1}{2}$  part of sunny skin tone to the previous mix & glaze the very center of the light reflections.

We now add a  $\frac{1}{2}$  part of ice yellow to the previous mix & glaze further towards the center of the light reflections. We furthermore add a secondary light reflection, on the areas of the muscles facing downwards. We do this by adding 1 part of doombull brown to the basecoat mix for the shaded areas, & glaze the frame of the light reflections. We furthermore make a 2:1 mix of doombull brown & british khaki & glaze in the center of the secondary light reflections. Add 2 parts of water.



We now add another  $\frac{1}{2}$  part of ice yellow to the previous mix used for the main light reflections, & glaze the very center of them.



As i felt the reflections needed more power & be more wide, i went back to the beginning of the process & did the exact same steps, but just made them wider – especially on the pointed out areas. On these areas, i gave it even more ice yellow in the very center of the light reflections, to make them pop even more in the last step.

Happy painting !